



**NORTEL**

Nortel Secure Network Access Switch

# Documentation Roadmap

Release: 2.0

Document Revision: 01.01

[www.nortel.com](http://www.nortel.com)

---

NN47230-103

324390-A

Nortel Secure Network Access Switch  
Release: 2.0  
Publication: NN47230-103  
Document status: Standard  
Document release date: 28 July 2008

Copyright © 2008 Nortel Networks  
All Rights Reserved.

Sourced in Canada, the United States of America, and India

#### LEGAL NOTICE

While the information in this document is believed to be accurate and reliable, except as otherwise expressly agreed to in writing NORTEL PROVIDES THIS DOCUMENT "AS IS "WITHOUT WARRANTY OR CONDITION OF ANY KIND, EITHER EXPRESS OR IMPLIED. The information and/or products described in this document are subject to change without notice.

\*Nortel, Nortel Networks, the Nortel logo, and the Globemark are trademarks of Nortel Networks.

All other trademarks are the property of their respective owners.

---

# Contents

---

<b>Software license</b>	<b>5</b>
<b>New in this release</b>	<b>9</b>
Features	9
Other changes	9
<b>Introduction</b>	<b>11</b>
Navigation	11
<b>Roadmap</b>	<b>13</b>
Navigation	13
Nortel Secure Network Access documentation packaging	13
Product fundamentals	14
Installation and commissioning	14
Upgrades and patches	15
Administration and security	15
Operations	15
Fault and performance management	16
<b>Information quality</b>	<b>17</b>
<b>Text conventions</b>	<b>19</b>
<b>Trademarks</b>	<b>21</b>
<b>Modular task-based information</b>	<b>23</b>
Task-based documentation	23
How is task-based documentation used?	24
Task flow overview	24
Work flows, task flows, and procedures	25
Purpose statements	25
Prerequisites	25
Work flows or task flows	25
Procedure steps	25
Example procedures	26
Variable definitions	26
Job aid	26

---

Task-based documentation terms 26

---

**Customer service**

**27**

Navigation 27

Updated versions of documentation 27

Getting help 27

Express Routing Codes 27

Additional information 28

---

## Software license

---

This section contains the Nortel Networks software license.

### **Nortel Networks software license agreement**

This Software License Agreement ("License Agreement") is between you, the end-user ("Customer") and Nortel Networks Corporation and its subsidiaries and affiliates ("Nortel Networks"). PLEASE READ THE FOLLOWING CAREFULLY. YOU MUST ACCEPT THESE LICENSE TERMS IN ORDER TO DOWNLOAD AND/OR USE THE SOFTWARE. USE OF THE SOFTWARE CONSTITUTES YOUR ACCEPTANCE OF THIS LICENSE AGREEMENT. If you do not accept these terms and conditions, return the Software, unused and in the original shipping container, within 30 days of purchase to obtain a credit for the full purchase price.

"Software" is owned or licensed by Nortel Networks, its parent or one of its subsidiaries or affiliates, and is copyrighted and licensed, not sold. Software consists of machine-readable instructions, its components, data, audio-visual content (such as images, text, recordings or pictures) and related licensed materials including all whole or partial copies. Nortel Networks grants you a license to use the Software only in the country where you acquired the Software. You obtain no rights other than those granted to you under this License Agreement. You are responsible for the selection of the Software and for the installation of, use of, and results obtained from the Software.

1. **Licensed Use of Software.** Nortel Networks grants Customer a nonexclusive license to use a copy of the Software on only one machine at any one time or to the extent of the activation or authorized usage level, whichever is applicable. To the extent Software is furnished for use with designated hardware or Customer furnished equipment ("CFE"), Customer is granted a nonexclusive license to use Software only on such hardware or CFE, as applicable. Software contains trade secrets and Customer agrees to treat Software as confidential information using the same care and discretion Customer uses with its own similar information that it does not wish to disclose, publish or disseminate. Customer will ensure that anyone who

uses the Software does so only in compliance with the terms of this Agreement. Customer shall not a) use, copy, modify, transfer or distribute the Software except as expressly authorized; b) reverse assemble, reverse compile, reverse engineer or otherwise translate the Software; c) create derivative works or modifications unless expressly authorized; or d) sublicense, rent or lease the Software. Licensors of intellectual property to Nortel Networks are beneficiaries of this provision. Upon termination or breach of the license by Customer or in the event designated hardware or CFE is no longer in use, Customer will promptly return the Software to Nortel Networks or certify its destruction. Nortel Networks may audit by remote polling or other reasonable means to determine Customer's Software activation or usage levels. If suppliers of third party software included in Software require Nortel Networks to include additional or different terms, Customer agrees to abide by such terms provided by Nortel Networks with respect to such third party software.

2. **Warranty.** Except as may be otherwise expressly agreed to in writing between Nortel Networks and Customer, Software is provided "AS IS" without any warranties (conditions) of any kind. NORTEL NETWORKS DISCLAIMS ALL WARRANTIES (CONDITIONS) FOR THE SOFTWARE, EITHER EXPRESS OR IMPLIED, INCLUDING, BUT NOT LIMITED TO THE IMPLIED WARRANTIES OF MERCHANTABILITY AND FITNESS FOR A PARTICULAR PURPOSE AND ANY WARRANTY OF NON-INFRINGEMENT. Nortel Networks is not obligated to provide support of any kind for the Software. Some jurisdictions do not allow exclusion of implied warranties, and, in such event, the above exclusions may not apply.
3. **Limitation of Remedies.** IN NO EVENT SHALL NORTEL NETWORKS OR ITS AGENTS OR SUPPLIERS BE LIABLE FOR ANY OF THE FOLLOWING: a) DAMAGES BASED ON ANY THIRD PARTY CLAIM; b) LOSS OF, OR DAMAGE TO, CUSTOMER'S RECORDS, FILES OR DATA; OR c) DIRECT, INDIRECT, SPECIAL, INCIDENTAL, PUNITIVE, OR CONSEQUENTIAL DAMAGES (INCLUDING LOST PROFITS OR SAVINGS), WHETHER IN CONTRACT, TORT OR OTHERWISE (INCLUDING NEGLIGENCE) ARISING OUT OF YOUR USE OF THE SOFTWARE, EVEN IF NORTEL NETWORKS, ITS AGENTS OR SUPPLIERS HAVE BEEN ADVISED OF THEIR POSSIBILITY. The foregoing limitations of remedies also apply to any developer and/or supplier of the Software. Such developer and/or supplier is an intended beneficiary of this Section. Some jurisdictions do not allow these limitations or exclusions and, in such event, they may not apply.
4. **General**

- a. If Customer is the United States Government, the following paragraph shall apply: All Nortel Networks Software available under this License Agreement is commercial computer software and commercial computer software documentation and, in the event Software is licensed for or on behalf of the United States Government, the respective rights to the software and software documentation are governed by Nortel Networks standard commercial license in accordance with U.S. Federal Regulations at 48 C.F.R. Sections 12.212 (for non-DoD entities) and 48 C.F.R. 227.7202 (for DoD entities).
- b. Customer may terminate the license at any time. Nortel Networks may terminate the license if Customer fails to comply with the terms and conditions of this license. In either event, upon termination, Customer must either return the Software to Nortel Networks or certify its destruction.
- c. Customer is responsible for payment of any taxes, including personal property taxes, resulting from Customer's use of the Software. Customer agrees to comply with all applicable laws including all applicable export and import laws and regulations.
- d. Neither party may bring an action, regardless of form, more than two years after the cause of the action arose.
- e. The terms and conditions of this License Agreement form the complete and exclusive agreement between Customer and Nortel Networks.
- f. This License Agreement is governed by the laws of the country in which Customer acquires the Software. If the Software is acquired in the United States, then this License Agreement is governed by the laws of the state of New York.





---

## New in this release

---

The following sections detail what is new in *Nortel Secure Network Access Switch Documentation Roadmap*, (NN47230-103) for Release 2.0.

- [“Features”](#) (page 9)
- [“Other changes”](#) (page 9)

### Features

This is the first standard release of the document.

### Other changes

None.



---

# Introduction

---

This documentation suite is applicable to software release 2.0 of the Nortel Secure Network Access Switch. Use this document to understand where you can find specific types of information in the customer documentation suite.

## Navigation

- [“Roadmap” \(page 13\)](#)
- [“Information quality” \(page 17\)](#)
- [“Text conventions” \(page 19\)](#)
- [“Trademarks” \(page 21\)](#)
- [“Modular task-based information” \(page 23\)](#)
- [“Customer service” \(page 27\)](#)



---

# Roadmap

---

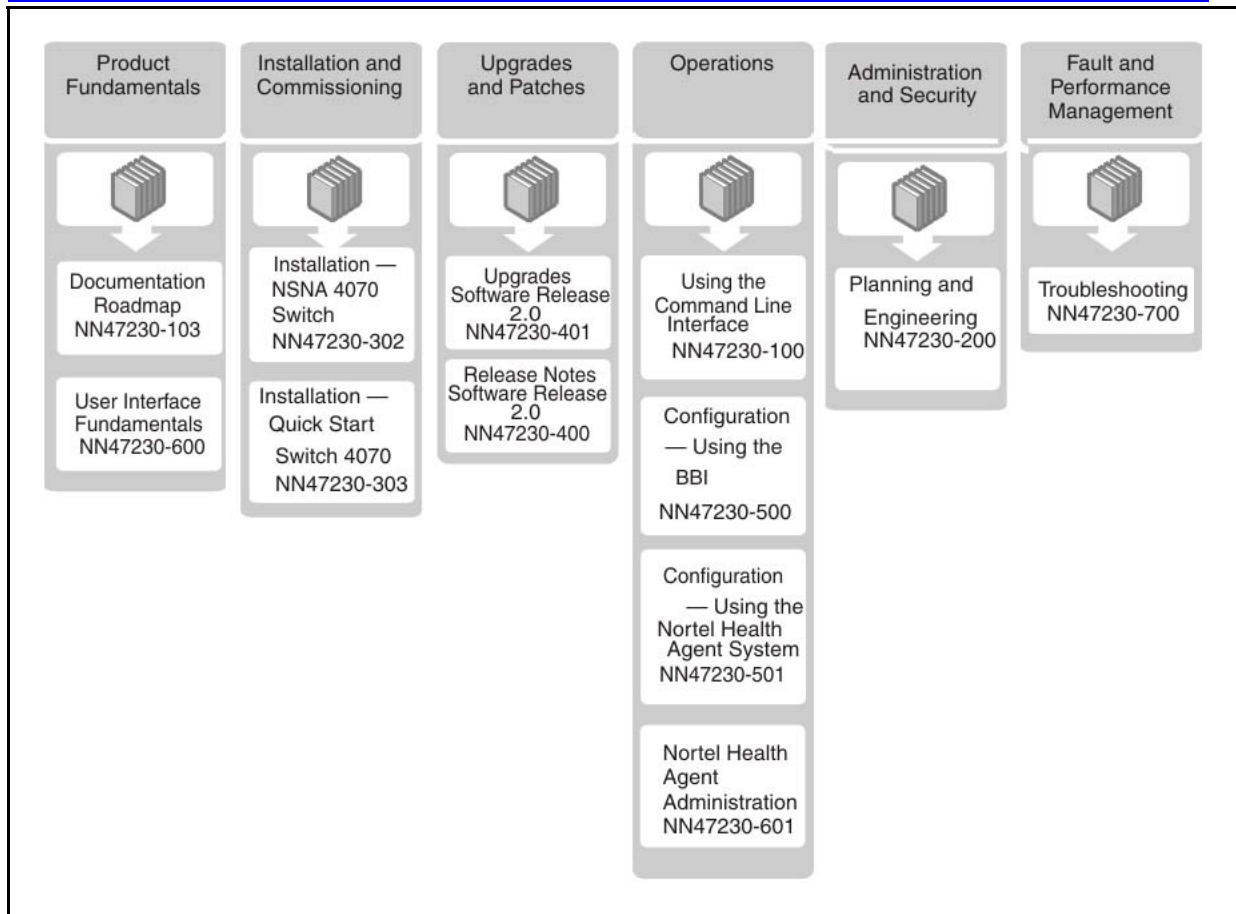
Use this chapter to find documentation for the Nortel Secure Network Access Switch.

## Navigation

- [“Nortel Secure Network Access documentation packaging” \(page 13\)](#)
- [“Product fundamentals” \(page 14\)](#)
- [“Installation and commissioning” \(page 14\)](#)
- [“Upgrades and patches” \(page 15\)](#)
- [“Administration and security” \(page 15\)](#)
- [“Operations” \(page 15\)](#)
- [“Fault and performance management” \(page 16\)](#)

## Nortel Secure Network Access documentation packaging

Nortel Technical Publications (NTP) are organized according to a set of job functions. For information about how the Nortel Secure Network Access Switch NTP suite is organized, see the following figure.



### Product fundamentals

Product fundamentals documentation includes this documentation roadmap and reference information about the product.

Document title	Description
<i>Nortel Secure Network Access Documentation Roadmap, (NN47230-103)</i>	This document contains an overview of the documentation suite and explains how to use task based documentation.
<i>Nortel Secure Network Access Switch User Interface Fundamentals, (NN47230-600)</i>	This document describes administration tasks performed after an installation or upgrade and on an ongoing basis to manage and maintain system configuration, data, and users.

### Installation and commissioning

Use the installation and commissioning documentation to install the Nortel Secure Network Access Switch hardware and software and perform configuration tasks.

Document title	Description
<i>Nortel Secure Network Access Installation — Quick Start Switch 4070</i> , (NN47230-303)	This document describes how to perform a typical installation of the Nortel Secure Network Access Switch 4070.
<i>Nortel Secure Network Access Installation — NSNA Switch 4070</i> , (NN47230-302)	This document describes how to perform a custom installation of the Nortel Secure Network Access Switch 4070.

## Upgrades and patches

Use the upgrades and patches documentation enables to install and manage patches for the current software release, and to upgrade hardware and software from one release to another.

Document title	Description
<i>Nortel Secure Network Access Switch Upgrades — Software Release 2.0</i> , (NN47230-401)	This document contains information to upgrade the Nortel Secure Network Access Switch from one software release to another release.
<i>Nortel Secure Network Access Switch Release Notes — Software Release 2.0</i> , (NN47230-400)	This document provides the most recent information, errata, and known limitations for the unit and its software.

## Administration and security

Use the administration and security documentation to securely manage and maintain the system configuration.

Document title	Description
<i>Nortel Secure Network Access Switch Planning and Engineering</i> , (NN472230-200)	This document describes the activities you must perform before you install the Nortel Secure Network Access Switch. Activities include site planning, network management, performance, and capacity requirements.

## Operations

Use the operations documentation to configure services and perform required maintenance tasks.

Document title	Description
<i>Nortel Secure Network Access Switch Configuration — Using the Browser Based Interface</i> , (NN47230-500)	This document contains information about using the browser-based interface to perform tasks related to post commissioning configuration and routine software maintenance.

Document title	Description
<i>Nortel Secure Network Access Switch Using the Command Line Interface, (NN47230-100)</i>	This document contains information about using the CLI to perform tasks related to post commissioning configuration and routine software maintenance.
<i>Nortel Secure Network Access Switch Configuration — Using the Nortel Health Agent System (NN47230-501)</i>	This document contains information about configuring the Nortel Health Agent.
<i>Nortel Secure Network Access Switch — Nortel Health Agent Administration (NN47230-601)</i>	This document contains information about configuring the Nortel Health Policy Administrator.

## Fault and performance management

Use the fault and performance management documentation to manage faults and optimize the performance of your Nortel Secure Network Access Switch.

Document title	Description
<i>Nortel Secure Network Access Switch Troubleshooting, (NN47230-700)</i>	This document describes common faults and error messages with the techniques to resolve them.



---

## Information quality

---

Documents are delivered with either a Draft, Preliminary, or Standard designation for the entire book, but the content for a specific feature can be at a different stage of development.

The status definitions are as follows:

- **Draft:** Information is written and reviewed for technical content, but the feature is still under development and change is expected.
- **Preliminary:** Development of the feature content is complete and is considered stable. The content is reviewed and tested internally.
- **Standard:** The feature content is included in external trials and is suitable for delivery to customers.



---

## Text conventions

---

This chapter describes the text conventions used throughout the Nortel Secure Network Access Switch documentation suite.

### angle brackets (less than, greater than)

Indicate that you choose the text to enter based on the description inside the brackets. Do not type the brackets when entering the command. For example, if the command syntax is `ping <ip_address>` you enter `ping 192.32.10.12`.

### asterisk

In command syntax, the asterisk indicates that you can enter multiple instances of the preceding parameter.

### bold Courier text

Indicates command names and options and text that you need to enter.

Example: Use the `debug portal` command.

Example: Enter `show interface`.

### braces ({} )

Indicate required elements in syntax descriptions where there is more than one option. You must choose only one of these options. Do not type the braces when entering the command. For example, if the command syntax is

```
add loghost [server=] [[facility=] {local10, local11,
local12, local13, local14, local15, local16, local17}]
```

you can enter either

```
add loghost server=10.11.12.10 facility=local12
```

OR

```
add loghost server=10.11.12.10 facility=local13
```

## brackets ( [ ] )

Indicate optional elements in syntax descriptions. Do not type the brackets when entering the command. For example, if the command syntax is `add user [epwd=] [priv={U, SU, SSU}]` you can enter `add user name=james epwd=pword priv=u,` or you can enter `add user james,` and leave out the terms shown in brackets.

## ellipsis points ( ... )

Indicate that you repeat the last element of the command as needed. For example, if the command syntax is `ethernet/2/1 [ ] ...` you enter `ethernet/2/1` and as many parameter-value pairs as needed.

## italic text

Indicates book titles.

## plain Courier text

Indicates system output such as prompts and system messages, for example:  
`Set Trap Monitor Filters.`

## separator (greater than symbol)

Shows menu paths. For example, File > SCS configuration identifies the SCS configuration option in the File menu.

## vertical line ( | )

Indicates the choices. Do not type the vertical line when entering the command. For example, if the command syntax is `check sub [sub]=<subid> | sub=<subname> [isp]=<ispname>` you can enter `check sub sub=345 isp=blue`  
OR  
`check sub sub=james isp=blue`

---

## Trademarks

---

\*Nortel, Nortel Networks, the Nortel logo, and the Globemark are trademarks of Nortel Networks.

Adobe and Adobe Reader are trademarks of Adobe Systems Incorporated.

Microsoft, Windows, Windows NT, and Windows Vista are trademarks of the Microsoft Corporation.

The asterisk after a name denotes a trademarked item.



---

# Modular task-based information

---

Modular task-based information (MTBI) is a quick reference for using the Nortel Secure Network Access Switch task-based documentation. MTBI describes the structure of task-based information and how it can be used most effectively.

## Navigation

- [“Task-based documentation” \(page 23\)](#)
- [“How is task-based documentation used?” \(page 24\)](#)
- [“Task flow overview” \(page 24\)](#)
- [“Work flows, task flows, and procedures” \(page 25\)](#)
- [“Task-based documentation terms” \(page 26\)](#)

## Task-based documentation

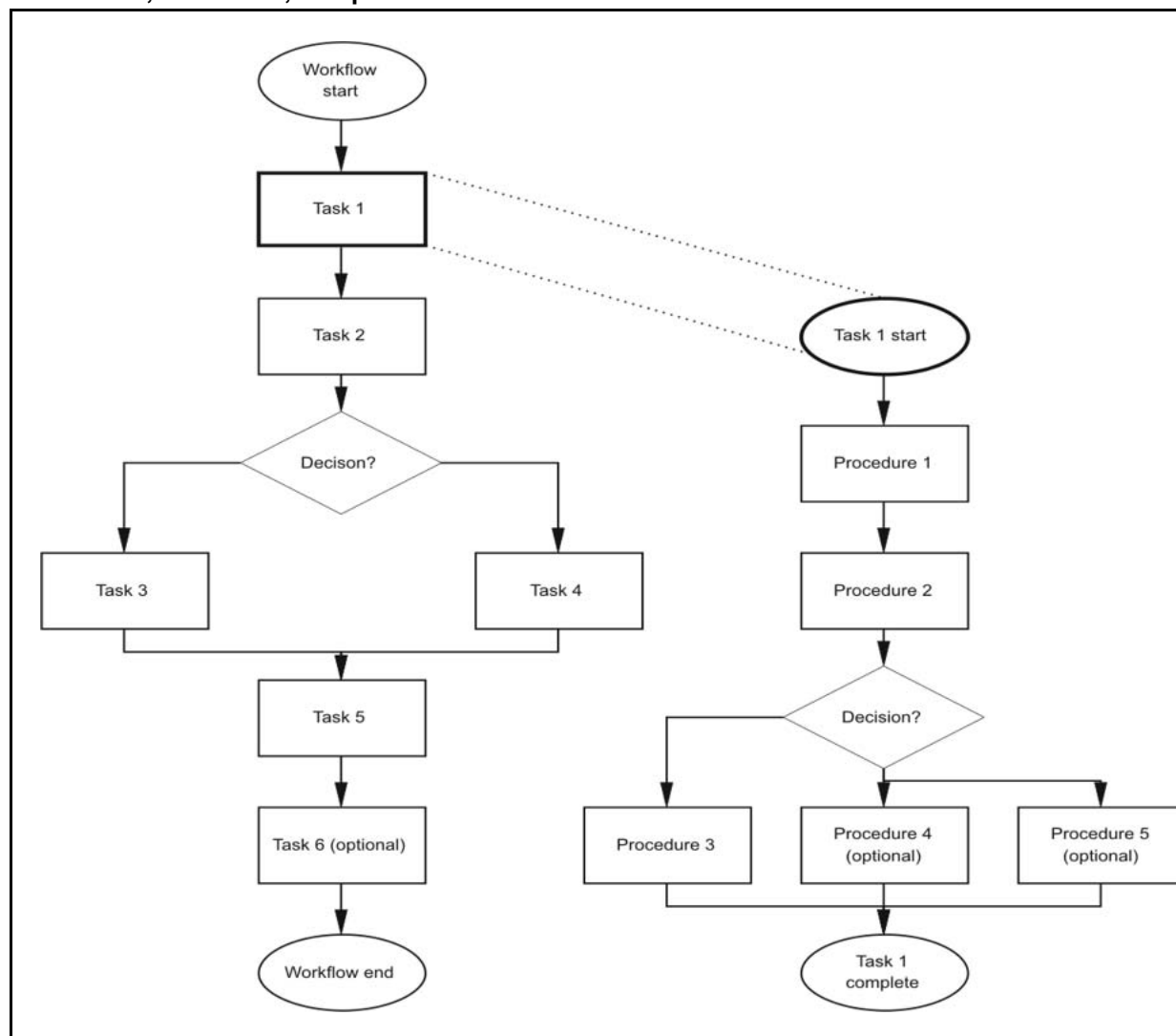
Task-based documentation is a new way of packaging customer information in a structured, modular, task-centric format.

Task-based documentation focuses on what the user must do and the sequence in which to perform tasks.

The goal is to make Nortel documentation easy to find, easy to use, timely, and accurate.

To understand the relationship between work flows, task flows, and procedures, see [Figure 1 "Work flows, task flows, and procedures in task-based documentation" \(page 24\)](#).

**Figure 1**  
**Work flows, task flows, and procedures in task-based documentation**



## How is task-based documentation used?

In task-based documentation, procedural information is included in the document. Supporting conceptual and reference information is provided, and the user is guided on how to use conceptual and reference material by identified prerequisites or direct links and references.

The user navigates the information by following the flows that are provided for tasks and procedures.

## Task flow overview

Task flows are flowcharts that illustrate which procedures and decisions are involved to complete an activity.



The task flows guide you through activities to use the Nortel Ethernet Routing Switch 8600, whether it is configuration, upgrading, installation, maintenance, or troubleshooting.

Each flow provides the prerequisites and links to the tasks or procedures.

To perform or refer to a procedure, always follow the task flow. Following the task flows ensures that you meet all the requirements for successful completion of the task.

## Work flows, task flows, and procedures

Work flows, task flows, and procedures have similar elements to maintain consistency and usability. Each section has a specific function.

- [“Purpose statements” \(page 25\)](#)
- [“Prerequisites” \(page 25\)](#)
- [“Work flows or task flows” \(page 25\)](#)
- [“Procedure steps” \(page 25\)](#)
- [“Example procedures” \(page 26\)](#)
- [“Variable definitions” \(page 26\)](#)
- [“Job aid” \(page 26\)](#)

To understand the relationship between work flows, task flows, and procedures, see [Figure 1 "Work flows, task flows, and procedures in task-based documentation" \(page 24\)](#).

### Purpose statements

Purpose statements explain why or when you would perform a work flow, task, or procedure and its impact.

### Prerequisites

Prerequisites lists everything you must do or understand before you start the workflow, task, or procedure, such as tasks that should already be completed, risks, confirmation of system status, required knowledge, time estimates or limitations, and links to supporting information.

The prerequisite section is omitted if no required prerequisites exist.

### Work flows or task flows

This section is the flow chart diagram that represents the task flow with navigational links to the tasks or procedures in the flow.

### Procedure steps

Procedures provide numerical steps that help you perform the procedure. Each step is a single action.

### Example procedures

Some procedures use examples to show how to correctly perform the procedure with realistic settings.

### Variable definitions

Variable definitions provide the possible values, ranges, or definitions of variables used in the procedure steps.

If variables are not used in the procedure, then the variables definition section is omitted.

### Job aid

Job aids provide information help to successfully perform the procedure.

The job aid is only used when required.

## Task-based documentation terms

Task-based documentation uses the following terms.

Term	Description
Work flow	A high-level or top-level group of tasks.
Task or task flow	A logical group of procedures that is represented as a single action in a flowchart diagram. Complex tasks can be divided into simpler tasks or subtasks.
Procedure	A logical group of steps that can be described as a single action in a task.
Step	A single action that is performed in a procedure.
Variable	A placeholder in procedure steps that can represent a value or definition.

Restructuring Nortel technical documents into a task-based format is an ongoing initiative. The documentation for some Nortel products is already converted to the new format.

---

## Customer service

---

Visit [www.nortel.com](http://www.nortel.com) to access the complete range of services and support that Nortel provides, or go to one of the pages listed in the following sections.

### Navigation

- “Updated versions of documentation” (page 27)
- “Getting help” (page 27)
- “Express Routing Codes” (page 27)
- “Additional information” (page 28)

### Updated versions of documentation

You can download and print the latest versions of Nortel Secure Network Access Switch NTPs and Release Notes directly from the Internet at [www.nortel.com/documentation](http://www.nortel.com/documentation).

### Getting help

If you purchased a service contract for your Nortel product from a distributor or authorized reseller, contact the technical support staff for that distributor or reseller for assistance.

If you purchased a Nortel service program, you can get help by contacting one of the Nortel Technical Solutions Centers found at [www.nortel.com/callus](http://www.nortel.com/callus); or visit the Technical Support site at [www.nortel.com/support](http://www.nortel.com/support).

### Express Routing Codes

An Express Routing Code (ERC) is available for many Nortel products and services, for example, the ERC for Nortel Secure Network Access Switch is 1766.

When you use an ERC, your call is routed to a technical support person who specializes in supporting that particular product or service. To locate an ERC for any product or service, go to [www.nortel.com/erc](http://www.nortel.com/erc).

### Additional information

Use the information in the following table to access other areas of the Nortel Web site.

For information about	Contact
Contact Us	<a href="http://www.nortel.com/contactus">www.nortel.com/contactus</a>
Documentation feedback	<a href="http://www.nortel.com/documentfeedback">www.nortel.com/documentfeedback</a>
Products (marketing)	<a href="http://www.nortel.com/products">www.nortel.com/products</a>
Partner Information Center (PIC)	<a href="http://www.nortel.com/pic">www.nortel.com/pic</a>
Register	<a href="http://www.nortel.com/register">www.nortel.com/register</a>
Search	<a href="http://www.nortel.com/search">www.nortel.com/search</a>
Services	<a href="http://www.nortel.com/services">www.nortel.com/services</a>
Training	<a href="http://www.nortel.com/training">www.nortel.com/training</a>



Nortel Secure Network Access Switch

## Documentation Roadmap

Copyright © 2008 Nortel Networks  
All Rights Reserved.

Release: 2.0  
Publication: NN47230-103  
Document status: Standard  
Document revision: 01.01  
Document release date: 28 July 2008

To provide feedback or to report a problem in this document, go to [www.nortel.com/documentfeedback](http://www.nortel.com/documentfeedback).

[www.nortel.com](http://www.nortel.com)  
Sourced in Canada, the United States of America, and India

### LEGAL NOTICE

While the information in this document is believed to be accurate and reliable, except as otherwise expressly agreed to in writing NORTEL PROVIDES THIS DOCUMENT "AS IS" WITHOUT WARRANTY OR CONDITION OF ANY KIND, EITHER EXPRESS OR IMPLIED. The information and/or products described in this document are subject to change without notice.

\*Nortel, Nortel Networks, the Nortel logo, and the Globemark are trademarks of Nortel Networks.

All other trademarks are the property of their respective owners.



## Free Manuals Download Website

<http://myh66.com>

<http://usermanuals.us>

<http://www.somanuals.com>

<http://www.4manuals.cc>

<http://www.manual-lib.com>

<http://www.404manual.com>

<http://www.luxmanual.com>

<http://aubethermostatmanual.com>

Golf course search by state

<http://golfingnear.com>

Email search by domain

<http://emailbydomain.com>

Auto manuals search

<http://auto.somanuals.com>

TV manuals search

<http://tv.somanuals.com>