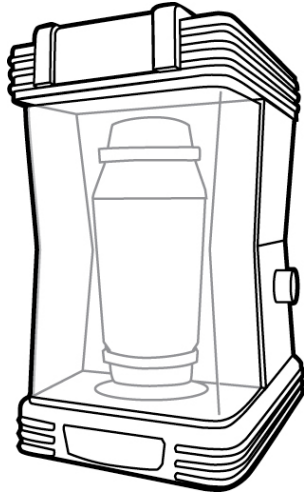


RETRO MARTINI SHAKER™

MSH-105



FOR HOUSEHOLD USE ONLY

**READ THESE INSTRUCTIONS BEFORE USING THIS
UNIT!**

SAVE THESE INSTRUCTIONS!

IMPORTANT PRECAUTIONS

Appliance Specifications:

120 Volts
90 Watts
60 Hz

Important Precautions to Remember:

- A. NEVER immerse the main base unit in water.
- B. NEVER operate near water or hot temperatures.
- C. NEVER leave unattended while in use.
- D. NEVER try to force the locking mechanisms.
- E. Unplug unit from power outlet source when not in use and when cleaning.
- F. DO NOT put in dishwasher, microwave or oven.
- G. Keep out of the reach of children.
- H. This appliance is NOT A TOY.
- I. This appliance is not intended for use by young children or cognitively challenged individuals without supervision.
- J. Young children should be supervised to ensure that they do not play with this appliance.

IMPORTANT SAFEGUARDS

When using electrical appliances, basic safety precautions should always be followed, including the following:

Read all instructions before operating this appliance.

- 1. Do not place hands or fingers inside door or attempt to touch the mixing shaker while unit is running.
- 2. To protect against electrical shock, do not immerse cord, plug, or any part of the main base unit in water or other liquids.
- 3. Close supervision is necessary when this or any appliance is used by or near children.
- 4. Unplug from outlet when not in use, before removing parts and before cleaning.
- 5. DO NOT operate any appliance with a damaged cord or plug, or if the appliance has been damaged in any manner. Return the appliance to the nearest repair shop for examination or repair, or send back to company as stated in this booklet in the warranty.
- 6. The appliance manufacturer does not recommend the use of any accessory attachments. These may cause injuries.
- 7. FOR HOUSEHOLD USE ONLY. Do not use outdoors.
- 8. Do not let the cord hang over the edge of the table or countertop, or touch hot surfaces.
- 9. DO NOT place on or near a hot gas or electric burner or in a heated oven.
- 10. Extreme caution must be used when moving this appliance.
- 11. DO NOT use this appliance for other than its intended use.

IMPORTANT SAFEGUARDS (Continued)

12. A unit that is plugged into an outlet should not be left unattended.
13. A short power supply cord is provided to reduce the risk resulting from becoming entangled or tripping over a long cord.
14. This appliance has a polarized plug (one blade is wider than the other). To reduce the risk of electrical shock, this plug is indented to fit into a polarized outlet only one way.

SAVE THESE INSTRUCTIONS!

ABOUT YOUR RETRO MARTINI SHAKER™

Thank you for purchasing the RETRO MARTINI SHAKER™. This 50s-styled automatic martini shaker will quickly mix martinis and other shaker type cocktail drinks. The RETRO MARTINI SHAKER™ is perfect for entertaining! The ability to quickly mix refreshing cocktail drinks will provide a fun addition to your family party or group gathering.

The RETRO MARTINI SHAKER™ includes a 16 ounce shaker with a sieve lid and closed cap. The thin upright design requires little counter space and the handsome black and silver finish will compliment your room or bar decor. The four rubber suction feet on the bottom of the unit keep the RETRO MARTINI SHAKER™ stationary while shaking and mixing drinks.

With your RETRO MARTINI SHAKER™ you can mix any alcohol (Gin, Whiskey, Vodka, etc.) with tonic, soda, water or juices to create your favorite cocktail drink. This machine is designed for kitchen or home bar use but can be used anywhere .

The RETRO MARTINI SHAKER™ is easy to use, and requires no assembly. Just follow the step by step instructions in the following pages.

BEFORE FIRST USE

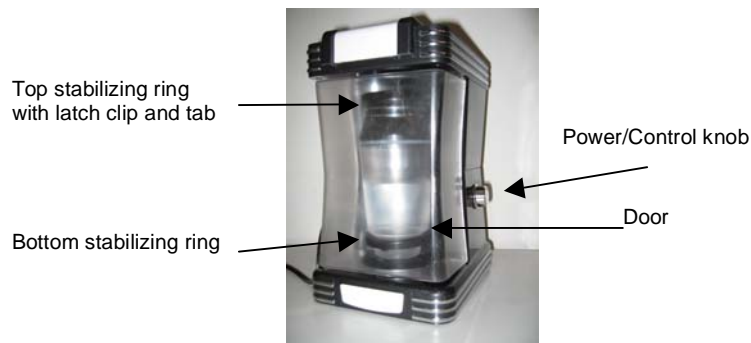
It is recommended that after unpacking your RETRO MARTINI SHAKER™, you wipe down the unit with a clean damp non abrasive sponge or cloth, to remove any post production soil or packing debris. Wash the 16 ounce Shaker cup in warm soapy water and towel dry.

USING YOUR RETRO MARTINI SHAKER™

1. Place your RETRO MARTINI SHAKER™ on a flat, level surface near an electrical outlet.
2. Moisten the four suction cups and set the unit into place.
NOTE: TO RELEASE THE SUCTION CUPS, LIFT UP ON THE FRONT OF THE UNIT AND TILT THE UNIT BACKWARD. THE AIR IN THE SUCTION CUPS WILL RELEASE.
3. Plug the electrical cord into the wall outlet making sure the chosen location is away from any water source.
4. Fill the Shaker cup with your choice of measured liquids, adding ice cubes as your recipe states.
NOTE: You may want to place the cup in the freezer or fill with ice for about 5 or 10 minutes (and then empty) before adding your liquid.

USING YOUR RETRO MARTINI SHAKER™ (Continued)

5. Place the cocktail shaker into the bottom holding ring (at the **base** of the Retro Martini unit) and close and latch the top ring (at the **top** of the Retro Martini unit). Latch the cup into position by placing your hand around the ring and using your thumb, pull back on the latch clip while pressing forward – then, as the clip closes over the extruding tab - release the clip. This motion locks the martini shaker in place. Close the door. (See illustration below)
 6. Close the clear protective safety door securely. Turn the safety door handle down counter clockwise. The safety door lock is secure, when the blue light goes on at the base of the Retro Martini Shaker™.
- NOTE:** *The unit will not function unless the safety door lock has been secured.*
To open and unlock, turn the safety door handle clockwise to the left and up, releasing the safety door lock.
7. Turn the power control knob (the ON/OFF and speed adjustment switch) clockwise to power on the RETRO MARTINI SHAKER™ and increase the shaking speed. Turn counter clockwise to lower and shut off the unit. Allow unit to shake on high for no more then 45 seconds. To remove the shaker cup, unlatch the top ring clip, open the ring and remove the cup. Within seconds, you should have the desired results - just pour and enjoy!



RETRO MARTINI SHAKER™

CLEANING

1. Unplug the unit before cleaning.
2. Remove the martini shaker and wash the shaker, sieve and cap in hot soapy water. Rinse thoroughly and dry with a soft cloth or towel.
3. The motor unit outer box shell can be easily wiped clean with a non-abrasive damp cloth or sponge and dried with soft non abrasive towel.

NOTE: To prolong the life and visual appearance of your RETRO MARTINI SHAKER™, be sure to follow the cleaning instructions after every use. Return your shaker to the stabilizing rings and close the cover door. You will be ready for your next cocktail event!

RETURNS & WARRANTY

SHOULD YOUR UNIT NOT WORK OR IS DAMAGED WHEN YOU FIRST TAKE IT OUT OF THE BOX, PLEASE RETURN IT TO THE PLACE OF PURCHASE IMMEDIATELY.

Should you have any questions, please contact us via email or at the customer service number listed below between the hours of 8:00 AM and 5:00 PM, Monday through Friday, Central Standard Time.

Distributed by:

Nostalgia Products Group LLC
1471 Partnership Dr.
Green Bay, WI 54304-5685

Customer Service

Phone: (920) 347-9122
Web: www.nostalgielectrics.com

Customer Service Inquiry

To submit a Customer Service inquiry, go to www.nostalgielectrics.com and fill out the **Customer Service Inquiry** form and click the Submit button. A representative will contact you as soon as possible.

RETRO MARTINI SHAKER™

MSH-105
Limited Warranty

This appliance is designed and built to provide many years of satisfactory performance under normal household use. The distributor pledges to the original owner that should there be any defects in material or workmanship during the first 90 days of purchase, we will repair or replace the unit at our option. Our pledge does not apply to damages caused by shipping, mishandling or unit being dropped. A product deemed defective either from manufacturing or being mishandled is up to the distributor's discretion. In order to obtain service under this warranty, please contact Nostalgia Products Group, LLC at the telephone number listed above or by filling out the Customer Service Inquiry Form located at www.nostalgielectrics.com.

This warranty does not apply to re-manufactured merchandise.

Please read these instructions carefully. Failure to comply with these instructions, damages caused by improper replacement parts, abuse or misuse will void this pledge to you and is being made in place of all other expressed warranties.



Nostalgia Products Group LLC
1471 Partnership Dr.
Green Bay, WI 54304-5685

Visit Us Online at
www.nostalgielectrics.com

©2009 Nostalgia Products Group LLC

Rev. 8/21/09

Free Manuals Download Website

<http://myh66.com>

<http://usermanuals.us>

<http://www.somanuals.com>

<http://www.4manuals.cc>

<http://www.manual-lib.com>

<http://www.404manual.com>

<http://www.luxmanual.com>

<http://aubethermostatmanual.com>

Golf course search by state

<http://golfingnear.com>

Email search by domain

<http://emailbydomain.com>

Auto manuals search

<http://auto.somanuals.com>

TV manuals search

<http://tv.somanuals.com>