

**Essentia
Wiring Diagram**

Zones 1-6 Power Amplifier Outputs

Continuous Average Output Power	40W (20W x 2)
Two channels driven 30-20kHz @1% THD	
Rated Distortion (1/2 power)	0.40%
Rated Impedance	6 Ohms
Damping Factor	50+
Frequency Response (20-20kHz)	±2dB

Zones 1-6 Preamplifier Outputs

Variable output	0-2.4V
Fixed output	2.4V
Impedance	1k Ohms

Source Inputs 1-6

Input Impedance	20K
Input Sensitivity for rated power	300mV RMS
Input Overload	2.4V RMS

Emitter Outputs

Source Outputs	6
Sum Outputs	1
Output Drive Current	20mA
Output Drive Voltage	5V
Compatible with single and dual emitters	

Essentia system package ships complete with the following:

- The Essentia six-source, six-zone amplifier
- Six sleek single gang Control Pads (each with white, ivory, almond, and black trim plates)
- Six IR emitters
- Allport connection hub, Allport cable, and Network cable
- One remote with batteries
- Rack ear mounts
- Power cable

System

System On Output	5V @ 20mA
External Mute Output	3.3-10V DC

Zone Trigger Outputs

Output Power	5V @ 20mA
Outputs	2 (zones 1, 2)

Power Requirements

Power Supply	85-265VAC 50/60Hz
Power Consumption all channels at maximum available output	150VA (150W)
Power Consumption average operating conditions	70VA (70W)
Power Consumption no signal	18VA (12W)
Standby Power Consumption	0.8W
USA Safety Listing (UL 6500)	
Canada Safety Listing (CAN/CSA E60065.00)	
CE Listing/SEMKO (EN60065, EN55013, EN55020, EN6100-3-2, EN6100-3-3/A1)	
Australia C-Tick	

Physical Specifications

Unit Size Millimeters	44H x 430W x 250D
Unit Size Inches	1 3/4H x 17W x 9 7/8D
Shipping Size Millimeters	265H x 558W x 375D
Shipping Size Inches	10 1/2H x 22W x 14 3/4D
Unit Weight Pounds	6.65 (3.0kg)
Shipping Weight Pounds	16.5 (7.5kg)
Keypad Size Millimeters	66H x 33W x 30D
Keypad Size Inches	2 5/8H x 1 1/4W x 1 1/8D

NuVo reserves the right to change specifications without notice.

www.nuvotechnologies.com

3015 Kustom Drive, Hebron, KY 41048
Phone: 859-817-7200 Toll Free: 866-796-4904



ESS-196-0748A



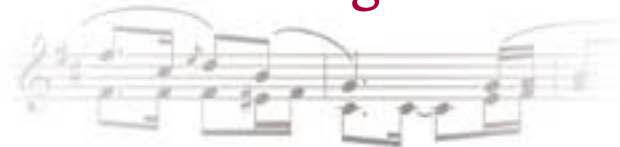
The Sound of LiVing.



Essentia®

Six-Source, Six-Zone Audio Distribution System

Six Sound Sources, Six Listening Zones, now in the Next Wave in Digital Technology



A New Level of Sophistication

The all new Essentia from NuVo takes whole home audio to another level. Leading a home electronics revolution, the new Essentia reflects NuVo's commitment to simple solutions. With *intelligent* operation, easy installation, and a price that makes luxury affordable, this is the most unique, efficient product in its class.

From the great room, to the back patio and throughout the home, Generation D design protocol masterfully delivers true high fidelity audio— sound that is distinctly NuVo.

A Higher Standard

With the Essentia system, the electronic home evolves into one of efficiency and environmental savings. As the first of its kind to earn the ENERGY STAR, the slender, single rack design exceeds energy consumption standards while effectively supplying 40 watts of power to each zone, making sure you don't miss one beat or tone.

Control On Demand

The new OLED display puts complete control at your fingertips. Selecting your favorite artist is as easy as 1-2-3. Album information displays your listening options from any Control Pad. Make your selection by audio source. Or, browse by station, play list, track, artist, album, or genre. With the Essentia Control Pad, you know what's playing when it's playing. And, with intuitive feedback, it's never been so easy to change selections and manage your system.

Intelligent and feature rich. With complete program functionality, you can customize your playback settings and options to fit the natural acoustics of each room. Keep a strong bass in the theater, limit the volume in the kids' rooms, and make dad happy with a dedicated tuner – so he's never interrupted. With the new Essentia it's all possible!



Seamless Integration

An open design frame equips Essentia for home automation control, allowing you to easily connect your audio distribution system to your digital home.

What's more, non-NuVo sources can be easily integrated with full IR control and macro support. Now listening to your CD changer is as easy as picking up the remote. And NuVoNet communication makes control of third party partner systems possible over serial data command.* Such simple control will make you seek a more integrated approach for all your home electronic systems.

*A variety of partner automation systems manufacturers - home security, lighting, HVAC, video, even some home networks - now have plug-in options that allow the Essentia Control Pad to operate these systems over a serial port connection with the use of NuVo's adapter.



The Complete Solution

A complete whole home audio system has never been easier or more affordable! Essentia (E6G) is now plug-and-play with all NuVo source components. Integrate the system with any six sources (M3, T2, NuVoDock) for a complete audio system with little or no programming. Access and control your iPod, satellite radio, and music server from one central interface. **That's the intuitive power of the Essentia Suite.**

One elegant system. Multiple listening choices. One happy family.

Home never sounded so good.

Essentia Features:

- Six audio source inputs for multi-source capability and up to six zones of music (expandable to twelve zones)
- 40 watts of power per zone for high-quality sound
- The first whole home audio system to be ENERGY STAR® qualified for superior power efficiency that uses less than 1 watt of power on standby mode
- Generation D digital amplifier for energy conservation, cooler operation, and higher-power output
- Sleek, smooth control pads with tactile button feedback
- Vivid 1-inch OLED display with scrolling text and up to 4 lines of data
- Streamlined navigation featuring source-browsing by play-list, track, artist, album, genre, or station
- RS-232 serial port for home automation integration
- Flexible set-up options – Source Grouping, Security, Volume Reset, Master Mode, Sleep Timer, and more
- Built-in infrared receiver for wireless control – designed to block adverse interference of plasma displays, sunlight, or fluorescent lighting
- Single-rack design with high-efficiency digital power supply
- Fixed and variable line outputs on zones 1 and 2 for use with high-power external amplifiers
- NuVoNet Platform featuring plug-and-play compatibility with NuVo source components for the complete Whole Home Audio Solution



six audio sources **6** to six zones throughout the home



Essentia comes complete with all necessary components for installation with the exception of speakers, wire, and audio source equipment.

NUVO®

The Sound of LiVing.

Free Manuals Download Website

<http://myh66.com>

<http://usermanuals.us>

<http://www.somanuals.com>

<http://www.4manuals.cc>

<http://www.manual-lib.com>

<http://www.404manual.com>

<http://www.luxmanual.com>

<http://aubethermostatmanual.com>

Golf course search by state

<http://golfingnear.com>

Email search by domain

<http://emailbydomain.com>

Auto manuals search

<http://auto.somanuals.com>

TV manuals search

<http://tv.somanuals.com>