
OkiLAN 6120e[®] User's Guide

***High Performance 10/100 Base-T Ethernet
Network Print Server***

Every effort has been made to ensure that the information in this document is complete, accurate, and up-to-date. Oki Data assumes no responsibility for the results of errors beyond its control. Oki Data also cannot guarantee that changes in products made by other manufacturers and referred to in this handbook will not affect the applicability of the information in it. This handbook is subject to change without notification.

© 2001 by Oki Data. All rights reserved.

Oki Data, OKIPAGE, OkiVIEW, OkiLAN Reg. T.M., M.D.,, and OKICOLOR T.M., OKI Electric Industry Co., Ltd.; Windows, MS-DOS Reg. T.M., Microsoft Corp.; HP LaserJet, PCL, Reg. T.M. Hewlett Packard Company; Centronics Reg. T.M., Centronics Data Computer Corp.; Energy Star, Reg. T.M., U.S. EPA; Ethernet Reg. T.M. Digital Equipment Corp.; Adobe Reg. T.M., PostScript T.M., Adobe Systems Inc.; Macintosh EtherTalk, LocalTalk, TrueType Reg. T.M. , Apple Computer Inc.; Novell, NetWare, Unix, YES NetWare Tested and Approved logo, Reg. T.M. Novell Corp.; ProPrinter, OS/2 Reg. T.M. TokenRing, T.M., International Business Machines Corp.

Organization

This manual has been divided into eight sections. Section I contains and installation instructions for the OkiLAN 6120e print server.

Section II contains information about management features, an extremely valuable set of OkiLAN 6120e management tools for network administrators.

The Network Operating System (NOS) and protocol sections are found in Sections III through VI.

Section VI contains information and instruction on Windows printing options. With the exception of the Advanced Management Features section, each section in this manual has been designed to be independent of one another.

Contents

Section I: Hardware Installation	I-1
Section II: Advanced Management Features	II-1
Chapter 1: SNMP	II-3
Chapter 2: HP JetAdmin Support	II-6
Chapter 3: HP Web JetAdmin Support	II-8
Chapter 4: OkiLAN 6120e Web Configuration	II-10
Chapter 5: Additional Management Features	II-18
Section III: NetWare	III-1
Chapter 1: Introduction	III-4
Chapter 2: OkiNet for NetWare	III-6
Chapter 3: OkiNet for NDS	III-24
Chapter 4: Using the OkiLAN 6120e in NDPS (NetWare 4.x, 5.1 or Higher)	III-33

Section IV: TCP/IP IV-1

Chapter 1: Introduction IV-5
Chapter 2: Configuring the OkiLAN 6120e IV-7
Chapter 3: TCP/IP Configuration and Printing IV-14
Chapter 4: OkiNet for TCP/IP IV-23
Chapter 5: Web Configuration IV-42
Chapter 6: Telnet Configuration IV-43
Appendix A: Troubleshooting IV-49
Appendix B: Application Considerations IV-56
Appendix C: Internet Printing Protocol (IPP) IV-81

Section V: LAN Manager/LAN Server V-1

Chapter 1: Introduction V-3
Chapter 2: Installation V-5
Chapter 3: Printing in the OS/2 Environment V-11
Chapter 4: Additional Utility Features V-13
Chapter 5: Using Help V-16
Appendix A: Troubleshooting V-17

Section VI: Windows Printing VI-1

Chapter 1: OkiLAN 6120e Set Up
for Windows NT 4.0/2000 VI-3
Chapter 2: OkiLAN 6120e Set Up
for Windows 95/98 VI-10

Section VII: OkiView 32 VII-1

Chapter 1: Introduction VII-3
Chapter 2: OkiView 32 Printer Panel VII-4

Section VIII: Regulatory Information VIII-1

Index

Network Operating Systems

Overview

OkiLAN 6120e simultaneously supports several network protocols in various combinations. Below is a list of supported network protocols accompanied with NOS/OS requirements.

TCP/IP and Windows NT

TCP/IP, FTP and Remote LPD protocols. Simple Network Management Protocol (SNMP) and Windows NT are supported in this environment. HTTP and a built-in Web server are standard for the 6120e.

Novell NetWare

Novell NetWare versions 3.x, 4.1, 5.x and higher.

LAN Manager/LAN Server

OS/2 version 1.3 with LAN Manager version 2.x and OS/2 version 1.3 or higher with LAN Server version 2.x and higher.

Service Information

Note: This information is valid for the United States and Canada only.

Oki Data On Line

Visit the OKI DATA Web Site at <http://www.okidata.com> for the latest information on:

- Software drivers
- Product guides
- Customer support
- Corporate information
- Dealers
- Documentation

Your Dealer

Consult the store where you purchased your OkiLAN 6120e, or call 1-800-OKI-DATA (1-800-654-3282) for the location of the nearest authorized Oki Data service dealer. Have your ZIP code ready.

- Proof of purchase is required for warranty work. Be sure to retain your purchase documents.
- Prices and minimum charges may vary.

The Oki Data Customer Support Center

For customer support, call 1-800-OKI-DATA (800-654-3282). The Oki Data Information System Automated Attendant is available 24 hours a day, 7 days a week. The system can provide immediate assistance with:

- Basic operating procedures
- Sales and service referrals
- Parts and consumable referrals
- Product information

Oki Data Customer Support Representatives

Agents are available 24 hours a day, 7 days a week at 1-800-OKI-DATA (1-800-654-3282). Please be sure that you are calling from a telephone close to your printer, so you can describe your problem accurately. Our customer service representatives are trained on all current Oki Data products They can answer your questions regarding:

- Installation
- Determination of printer issues that require service
- Consumer relations
- Interface information
- Availability and installation of printer drivers and support for the latest network operating systems.
(Customer service representatives are not trained to provide assistance with the use of commercial software packages. Please consult your software user's manual for times and availability of their support).

Oki Data Service Centers

Oki Data has over 2,000 local Authorized Service Providers in North and South America.

For the most comprehensive, up-to-date listing of Oki Data authorized Service Centers:

- Consult our web site at **www.okidata.com**
- In the U.S. and Canada, call 1-800-654-3282 (1-800-OKI-DATA) English and French only.
- In Latin America, contact the Latin America Service Coordinator at Oki Data's Corporate Headquarters at 856-222-7496 (Spanish only).

UNITED STATES

Oki Data Americas, Inc.
2020 Bishops Gate Blvd.
Mt. Laurel, NJ 08054
Tel: 1-800-654-3282
Fax: 1-856-222-5247

CANADA

Oki Data Americas, Inc.
2735 Matheson Blvd. East, Unit 1
Mississauga, Ontario, Canada
L4W 4M8
Tel: 1-800-654-3282
Fax: 1-905-238-4427

MEXICO

Oki Data de Mexico, S.A. de C.V.
Mariano Escobedo No. 748 - 8 Piso
Col Anzures, e. p. 11590
Mexico, DF
Tel: (525) 263-8780
Fax: (525) 263-8785

BRAZIL

Oki Data do Brasil, Ltda.
Rua Alexandre Dumas, 2220
- 8 andar
Chácara Sto Antonio
São Paulo 04717-004, Brasil
Tel: 5511-3444-3500
Fax: 5511-3444-3501

When you call Technical Support, the following information will help us answer your questions more quickly and accurately. Please be able to identify the following:

- OkiLAN model number
- Serial number
- Configuration sheet settings
- Type of network cable connected to the OkiLAN 6120e
- Printer(s) make and model numbers
- Computer and network adapter card make and model numbers
- Network Operating System and version number

Please write these numbers down in the space provided below for future reference.

Model #: _____
S/N: _____
Ethernet ADDR: 00:40:68: ____ : ____ : ____

Section I:

Hardware Installation

Contents

Powering On the OkiLAN 6120eI-7
Printing a Configuration SheetI-8

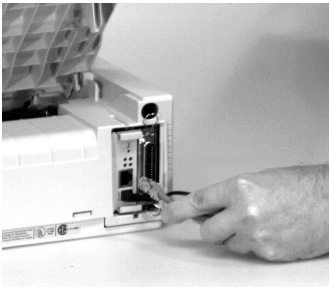
The OkiLAN 6120e Print Server enables Ethernet network users to connect to a printer with an OKI SIDM port.

The OkiLAN 6120e supports 10/100-megabit networks and most popular network operating systems and SIDM printers.

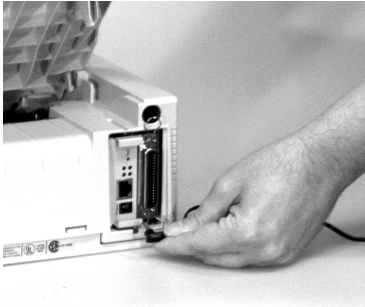
Removing the OkiLAN 6120e

Before using the parallel port, you *must* remove the OkiLAN 6120e from the printer.

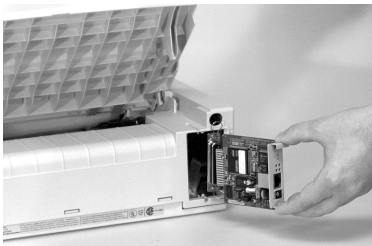
1. Turn off printer power.
2. Unplug the power cord.
3. Unplug the 10/100Base-T UTP cable from the receptor on the back of the OkiLAN 6120e.



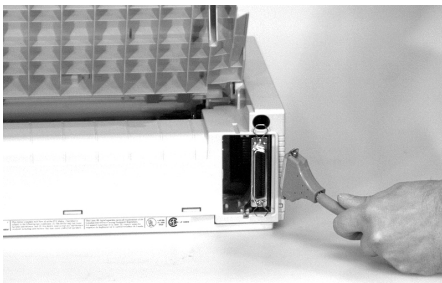
4. Unplug the power adapter from the wall outlet. Then unplug the power adapter wire from the power jack on the OkiLAN 6120e.



5. Slide the OkiLAN 6120e out of the printer and store it in a safe place for future network requirements.



6. Attach the interface cable to the parallel interface connector. Attach the other end of the cable to your computer.

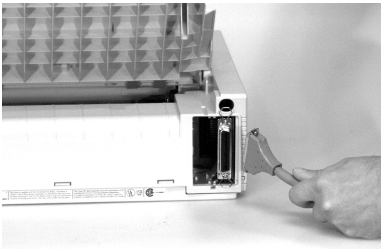


7. Plug the power cord into the power outlet.

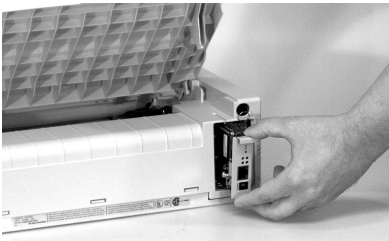
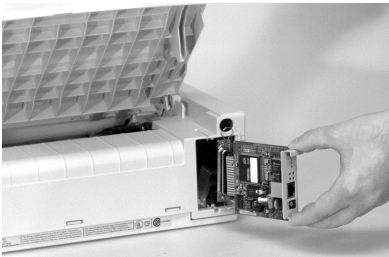
Re-installing the OkiLAN 6120e

To use your printer on a network, you must re-install the OkiLAN 6120e.

1. Turn off printer power.
2. Unplug the power cord.
3. Detach the interface cable from the rear of the printer.

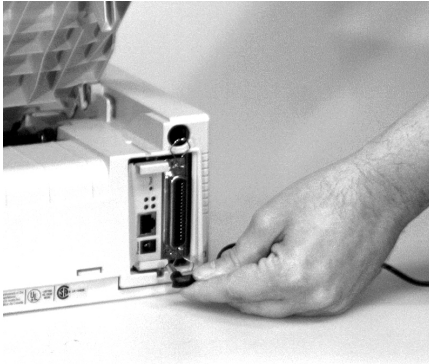


4. Insert the OkiLAN 6120e by sliding it along the rails in the recess of the printer, until it is plugged into the socket in the rear of the recess.

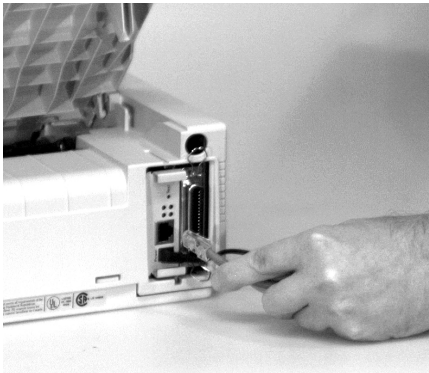


5. Plug the power adapter wire into the power jack on the OkiLAN 6120e. Then plug the power adapter into a 120 VAC wall outlet.

Please note that some countries may require a different adapter for local voltages, such as 240 VAC.



6. Attach the 10/100Base-T UTP cable to the receptacle on the back of the OkiLAN 6120e. Attach the other end of the cable to the Network.



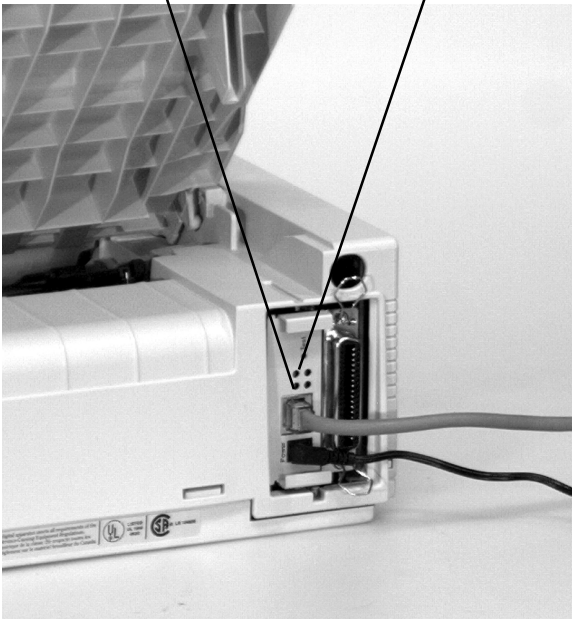
7. Plug the power cord into the power outlet.

Powering On the OkiLAN 6120e

Turn printer power on. The red and green indicators on the OkiLAN 6120e will blink during self-test. When self-test completes successfully, the red indicator will go off and the green indicator will stay on.

Green indicator

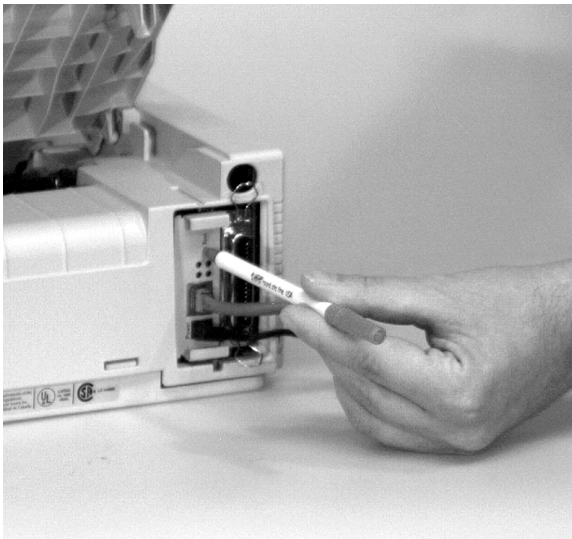
Red indicator



Note: If the red and green indicators do not display as indicated above, see **Hardware Troubleshooting** at the end of this section.

Printing a Configuration Sheet

To print configuration information, press the **Test** button on the front of the OkiLAN 6120e. *You can also print configuration information using the utility program provided on the CD.*



Note: By default, the configuration sheet prints in ASCII text.

The content of the configuration sheet will vary depending on your printer and system setup.

Installing the OkiLAN 6120e Software Utilities

Introduction

Your OkiLAN 6120e Print Server comes with two types of software utilities: OkiView 32 and OkiNet Utilities.

OkiView 32

OkiView 32 is a general purpose utility for configuring and monitoring printers on NetWare and Windows NT/2000 servers. It includes a GUI for the Win32 (Windows) environment. For more information on using OkiView 32, see section VIII.

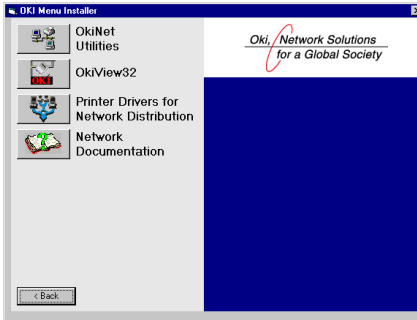
OkiNet Utilities

The OkiNet utilities are specialty utilities used in different operating systems such as Unix, Mac and Win32.

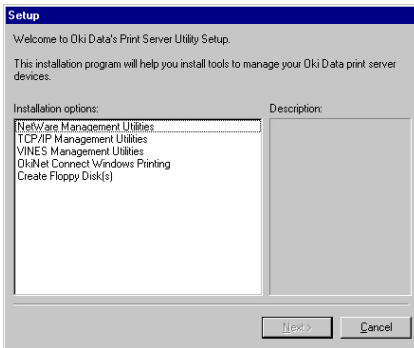
A custom port monitor utility is also provided for the Win32 environment which supports peer-to-peer printing, also known as serverless printing. TCP/IP, DLC and IPX-direct protocols are supported in this serverless network environment. See Section VII, Windows Printing, for details.

Installing the OkiNet Utilities Software in Windows

1. Click the **OkiNet Utilities** button on the *OKI Menu Installer* screen.



2. When the *Setup* screen appears, select the utility group for the network environment you have, then click **Next**.



3. Follow the online instructions to complete installation.

Windows Utility Groups:

NetWare Management Utilities

- OkiNet Utility for NetWare
- OkiNet Utility for NDS (Workstation and Server)
- OkiNet Utility for NDS (Workstation)

OkiNet Connect Windows Printing

- OkiNet Connect for TCP/IP (Windows 95/98)
- OkiNet Connect for TCP/IP (Windows NT)
- OkiNet Connect for IPX/SPX (Windows 95/98)
- OkiNet Connect for IPX/SPX Windows NT)
- OkiNet Connect DLC (Windows 95/98)
- OkiNet Connect DLC (Windows NT)

TCP/IP Management Utilities

- OkiNet Utilities for TCP/IP
- OkiNet Alert for TCP/IP
- Okidata MIB
- BootP Server

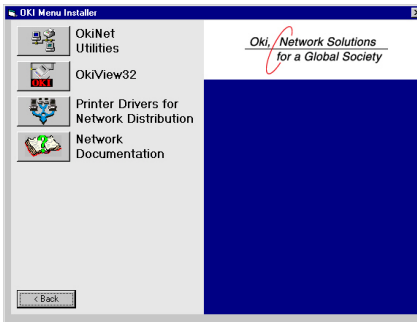
Apple® Macintosh® Utility Groups: OkiNet for the Apple® Macintosh® Utility

Note: The OkiLAN Utilities CD is designed for more than one type of OkiLAN print server and includes features that do not apply to the OkiLAN 6120e. Specifically, Apple EtherTalk is supported by other OKI print servers but not by the OkiLAN 6120e.

Installing OkiView 32

Note: Novell's Client for Windows 95/98/Me, NT or 2000 is required for OkiView 32. Microsoft Client is required only for configuring Novell using a Microsoft network.

1. Click the **OkiView 32** button on the *OKI Menu Installer* screen.



2. Follow the online instructions to complete installation.

Hardware Troubleshooting

Status Indicator

The LED status indicators display the general operating state of the OkiLAN 6120e. During normal operation, the red LED is off and the green LED is on, indicating that the OkiLAN 6120e is functioning properly and the presence of the network is detected.

The following list describes LED displays that indicate problems, as well as possible solutions:

LED Display

Green indicator flashing very rapidly

Problem

The OkiLAN 6120e has not detected the presence of a network cable.

Solution

- a) Unplug the OkiLAN 6120e power adapter from the wall outlet. Remove the network cable. Plug the network cable back in until you hear a positive click. Check the other end of the cable in the same manner. Plug the OkiLAN 6120e back in. If it does not detect a cable, continue below.
- b) Verify the cable is a 10/100 Base-T cable and it has an RJ-45 end. The network cable must have a cat-3 or higher rating. *Silver Satin or flat ribbon cable is not adequate.*
- c) Connect to a network that a currently working PC or print server is using. If the OkiLAN 6120e is still unable to detect the network cable, contact Technical Support for assistance.

LED Display

Green indicator is flashing slowly (1 timer/sec); the OkiLAN 6120e is trying to print a job.

Problem

The printer is malfunctioning or does not have sufficient paper or toner.

Solution

Verify that the printer is not showing any errors and has sufficient paper and toner.

LED Display

Red indicator stays red for more than 30 seconds

Problem

The printer server has failed the Power On Self Test.

Solution

The OkiLAN 6120e will try to print a configuration sheet on the printer with more information.

Failing the self test can be caused by any of the following:

- a) The printer is malfunctioning. Unplug the OkiLAN 6120e from the printer and unplug the power adapter. Reconnect the OkiLAN 6120e and the power adapter. If the OkiLAN 6120e still fails the self test, continue below.
- b) The OkiLAN 6120e power supply has failed or there is a hardware problem. Contact Oki Data Customer Support for replacement information.

LED Display

The red and green indicators are alternately flashing for longer than two minutes.

Problem

The OkiLAN 6120e is in firmware download mode. This means it is waiting for new firmware to be sent before it will continue functioning normally.

Solution

If the OkiLAN 6120e was purposely put into firmware download mode, finish the download with the proper update utility. Contact our web site at <http://www.okidata.com> to download the utility.

Section II:

Advanced Management Features

In This Section

Chapter 1 SNMP	II-3
Overview	II-3
Private MIB	II-3
Traps	II-4
Security	II-5
Chapter 2 HP JetAdmin Support	II-6
Overview	II-6
Configuring the OkiLAN 6120e Using JetAdmin	II-6
Chapter 3 HP Web JetAdmin Support	II-8
Overview	II-8
Configuring the OkiLAN 6120e Using Web JetAdmin	II-8
Installing a Windows NT Printer for the OkiLAN 6120e	II-8
Obtaining Diagnostic Information from the OkiLAN 6120e	II-9
Chapter 4 OkiLAN 6120e Web Configuration	II-10
Overview	II-10
Connecting to the OkiLAN 6120e	II-10
Configuration	II-12
Status	II-15
Print Job Log	II-15
Support	II-15
Reset	II-16
OkiLAN 6120e Server Discovery	II-16
Troubleshooting	II-17
Chapter 5 Additional Management Features	II-18
OkiNet Alert	II-18
Enhanced Printer Status	II-18
OkiNet for NDS	II-19
OkiNet for TCP/IP (Creating Custom Views)	II-19
NetWare Load Balancing	II-19
Windows Printing	II-19
Printer Security for TCP/IP Printing	II-19

Chapter 1

Simple Network Management Protocol (SNMP)

Overview

Simple Network Management Protocol (SNMP) provides network administrators with the ability to communicate management functions between an SNMP manager and an SNMP agent. An SNMP manager is a user program the network administrator can use to manage SNMP agents. The manager can retrieve *Get* information from the agent or alter *Set* information on the agent. An agent can also send an unsolicited message *Trap* to a manager when it encounters an unusual condition.

The OkiLAN 6120e is a fully functional SNMP agent and supports, to the extent of open industry standards such as RFC 1759, any standard SNMP management platform, including:

- HP OpenView
- Novell NMS
- Sun SunNet Manager
- IBM NetView

Private MIB

OkiLAN 6120e SNMP support has been enhanced with a private MIB. It is accessible via SNMP over TCP/IP and IPX. This private MIB contains over 150 configuration and status variables for the network protocols, printer ports, network interface, printer settings, and the overall OkiLAN 6120e status. Printer status traps such as on-line, off-line, detached printer and printer error are also provided.

The setting of certain variables causes an immediate firmware reset. These variables are listed in the private MIB under *cmdReset*.

Note: If you attempt a reset while a job is printing, the job may not print successfully.

Certain variables are critical, that is, they change a fundamental operating parameter of the OkiLAN 6120e. These variables are saved by the OkiLAN 6120e but are not actually used until it is power cycled or is reset. When any one of these variables is changed the variable *genConfigDirty* is automatically set to *yes* by the print server. This signifies a reset is required for all configuration changes to be made active. We recommend checking the *genConfigDirty* variable after using a MIB browser to make any configuration changes to the OkiLAN 6120e. If *genConfigDirty* is set to *yes*, then the *cmdReset* variable should also be set to *yes*. This will cause the OkiLAN 6120e to reset, make all configuration changes active on the OkiLAN 6120e and set both the *cmdReset* and *genConfigDirty* variables to *no*. These critical variables are listed in the private MIB under *genConfigDirty*.

Traps

Traps are unsolicited information from the SNMP agent. The OkiLAN 6120e uses a ColdStart trap to inform the manager it has been powered on or reset. An authentication failure trap is sent when the OkiLAN 6120e receives an SNMP trap *GET* or *SET* request with an incorrect community name.

The OkiLAN 6120e sends printer traps when there is a change in the status of the printer. If the Printer goes off-line, runs out of paper or is detached, the administrator will be notified via the OkiLAN 6120e traps over both UDP and IPX. Additionally, the OkiLAN 6120e can send traps on *toner low*, *paper jam*, and *printer cover open*, depending on the printer's capabilities. The traps may be configured for specific destination addresses and can be configured for a particular printer port and/or printer trap.

In order to receive OkiNet Alert traps, the OkiLAN 6120e must have bi-directional status enabled (it is disabled by default). Extended Status can be enabled through the OkiLAN 6120e Configuration utility (telnet) from the *Configure Port* option. You can also enable OkiNet Alert through OkiNet for TCP/IP or IPX from the *Output Port* file tab.

Security

SNMP implements a simple security system known as *community names*. Each SNMP message has a community name associated with the command in the message. SNMP allows for a *Set* community name, *Get* community name and a *Trap* community name. When the SNMP Agent receives a command, it checks the community name of the message with the community name of the device. If the community names do not match, the Agent discards the message and sends an authentication failure trap.

Both the OkiNet for TCP/IP and the IPX, and the OkiLAN 6120e Configuration utility (telnet) allow you to specify the community names and a trap destination IP address.

Chapter 2

HP JetAdmin Support

Overview

This section contains instructions and information on how to configure and obtain diagnostic information from your OkiLAN 6120e using the Hewlett-Packard JetAdmin software.

Software Requirements

- JetAdmin 2.4, 2.5, or 3.02
- Windows 95/98 or Windows NT/2000

Note: For more information on installing and using HP JetAdmin, refer to the HP JetAdmin documentation.

Configuring the OkiLAN 6120e Using JetAdmin

NetWare Configuration

1. From the main JetAdmin screen, select the OkiLAN 6120e port you wish to configure.
2. Select **Modify** from the *Device* menu.
3. On the *Configuration* screen, select the **General** tab and enter the print server name and description.
4. Select the **NetWare** tab and click on the **Operating Mode** icon from the left column. Set the print server operating mode from the given options on the right.
5. If you are running a NetWare 4.x network, click the **NetWare Directory Services** icon from the left column. Select **NDS Tree Name** from the pull-down menu and enter the **Print Server Context**.
6. Click the **Queues** icon from the left column to bring up the *Queues* screen and then click the **Change** button.

7. Select the desired queues from the list of Available Queues to be added into service. Click the **Service** button to move the selection to the *Serviced Queues* column. When all queues have been added, click **OK**.
8. Click **OK** again to return to the main screen.

WARNING: Do not use both OkiNet and JetAdmin to change NetWare configuration settings as unexpected results may occur.

TCP/IP Configuration

1. From the main JetAdmin screen, select the OkiLAN 6120e port you wish to configure.
2. Select **Modify** from the *Device* menu.
3. On the *Configuration* screen, select the **General** tab and enter the print server name and description.
4. Select the **TCP/IP** tab and set the print server IP configuration.

AppleTalk Configuration

1. From the main JetAdmin screen, select the OkiLAN 6120e port you wish to configure.
2. Select **Modify** from the *Device* menu.
3. Under the **Optional** tab, select **Mac**.
4. Enter the Apple Talk name and click **OK**.

Obtaining Diagnostic Information Using JetAdmin

1. From the main JetAdmin screen, select the OkiLAN 6120e port on which you wish to view diagnostic information.
2. Select **Properties** from the *Device* menu.
3. From the *Properties* screen, select the appropriate tab to view the desired diagnostic information.

Note: For JetAdmin to function correctly with the OkiLAN 6120e, the SNMP *Get community name* in JetAdmin must be set to *public*.

Chapter 3

HP Web JetAdmin Support

Overview

This section contains instructions and information on how to configure, install, and obtain diagnostic information from your OkiLAN 6120e using the Hewlett-Packard Web JetAdmin software.

Software Requirements

- Web JetAdmin 1.x, 2.x, 3.x, or 4.x

Note: For more information on installing and using HP Web JetAdmin, refer to the HP Web JetAdmin documentation.

Configuring the OkiLAN 6120e Using Web JetAdmin

1. From the main Web JetAdmin page, select the OkiLAN 6120e port you wish to configure.
2. On the *Properties* page, click the **Config** button.
3. Make any necessary changes to the options listed and click the corresponding **Apply** button.

Installing a Windows NT Printer for the OkiLAN 6120e

1. From the main Web JetAdmin page, select the OkiLAN 6120e port you wish to install.
2. On the *Properties* page, click the **Install Printer** button.
3. In the *Specify the device address...* field, enter the print server IP address, followed by a comma and then the output port number. For example, to install a printer for output port 2 of an OkiLAN 6120e with an IP address of 10.10.10.2, enter “10.10.10.2,2”.

4. On the *Install Printer Page 1* page, select an NT domain from the pull-down menu. Enter the user name and password of a domain user with sufficient rights to create a printer and click the **Continue** button.
5. On the *Install Printer Page 2* page, select the Windows NT machine from the pull-down menu on which you want to create the shared printer and click the **Continue** button.
6. On the *Install Printer Page 3* page, select a printer driver from the pull-down menu and click the **Continue** button.
7. On the *Install Printer Page 4* page, enter a name for the printer in the Select Printer Name field and click the **Install Printer** button.
8. Users in the domain can now print to the new printer.

Obtaining Diagnostic Information from the OkiLAN 6120e

1. From the main Web JetAdmin page, select the OkiLAN 6120e port on which you wish to view diagnostic information.
2. Click the **Diagnose** button.
3. From the *Properties* page, select the appropriate diagnostic category name to view information.

Chapter 4

OkiLAN 6120e Web Configuration

Overview

This section contains instructions and information on how to configure and manage your OkiLAN 6120e using a standard Web browser.

Software Requirements

TCP/IP Protocol

Netscape Navigator 2.0 or greater and Microsoft Explorer 3.0 or greater (Other browsers may work).

Note: If you experience difficulties connecting to the server, refer to *Appendix A, Troubleshooting*.

Connecting to the OkiLAN 6120e

1. Enter **http://<HTTP Address>** in the browser address prompt.
The HTTP address can be the IP address, the System Name if the print server has been configured to use WINS, or the DNS name if registered with a DNS server.

Note: It is not currently possible to discover all OkiLAN 6120e products from a Web browser. If you need to create a list of all available OkiLAN 6120e products and their addresses, refer to the *OkiLAN 6120e Product Discovery* section for instruction.

Note: As a layer of security, the TCP port number that the device uses to communicate with browsers, called the *HTTP port*, can be modified from a default of 80. If the port is modified, the HTTP address put in the browser must include the port number, for example, *http://vpn.company.com:99/* would be entered for port 99. Refer to the *Web Admin Configuration* section for details.

2. A successful connection will display the print server home page.



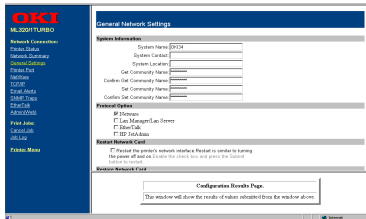
Note: By default, only *Status* and *Support* information can be viewed. To configure the print server, see the *Configuration* section.

The print server pages are normally displayed in a frame with two panes. The left pane shows all the top level menus along with links to the pages under each menu. The right pane displays the currently selected page. If your browser does not support frames, or you select the *No Frames* link at the bottom of the left pane, a single page will be displayed. In this case, the menu items normally shown in the left pane can be accessed by using the menu links that appear at the bottom of the page.

Configuration

1. Select the **Login as Admin** link under the *Configuration* menu.
2. On the *Enter Network Password* screen, enter the *User name* and *Password*.

The default administrator User name is *admin*. The default administrator Password is *OkiLAN*—note that the password is *case sensitive*. We suggest that the print server administrator change the default administrator User name and Password. New User name and Password entries can contain up to 24 characters.
3. Select the appropriate link under the *Configuration* menu and modify the desired values on the page that appears.



Note: All values (except as noted on the following pages*) are configured exactly the same as in the OkiNet utility. Please refer to the OkiLAN 6120e User's Guide *Section IV - TCP/IP, Chapter 4 - OkiNet for TCP/IP* for instructions on configuration.

4. Select the **Submit Changes** button at the bottom of the page to send the new values to the print server.

WARNING: Changes will not be saved if the *Submit Changes* button is not selected before continuing to another page.

5. A *Request Results* page will appear indicating one of the following:
- **Configuration Successfully Set:** The values have been successfully saved to the print server. Go to another page to continue configuration or exit the browser.
 - **Invalid Input:** Some or all input fields contain invalid information. None of the values have been saved to the print server. The *Request Results* page will list all fields that contain errors along with a description of the problem. Selecting the **Back** button on your browser will generally redisplay the page you just submitted and allow the values to be edited. Selecting the **Reload** link on the *Request Results* page will produce a new entry page from the server so you can start over.
 - **Configuration Successfully Set. Reset Required:** The values have been successfully saved, but the print server must be reset for the desired values to take effect. Reset the server immediately or wait until all configuration is complete before resetting. If you do not reset immediately, a link will appear at the top of all subsequent configuration pages reminding you to reset the server.

*** The following values are currently only configurable through the Web browser interface:**

Web Admin Configuration

Under the *Configuration* menu, select the **Admin(Web)** link.

- **Admin Name** - The name used to access full configuration privileges. The default Admin Name is *admin*.
- **Admin Password** - This field is used to specify the Admin Password used to access full configuration privileges. This field will accommodate up to 24 characters. The default Admin Password is *OkiLAN*-note that the password is *case sensitive*.

Note: The *Admin Password* is also used as the Telnet password.

- **Confirm Admin Password** - This field is used to confirm the Admin Password entry by entering a second time.
- **HTTP Port** - This field is used to specify the TCP port that the HTTP protocol will listen on. The default HTTP port is 80, but can be changed to provide added security.
- **FAQ URL** - By default points to the FAQ page on the OKI Web Server. Maximum URL length is 63 characters.
- **Updates URL** - By default points to the firmware update site on the OKI FTP Server. Maximum URL length is 63 characters.
- **Custom Link Title** - This field is useful for setting up a link to an internal help desk. If configured, it will appear under the Support menu. Will accommodate up to 24 characters.
- **Custom Link URL** - This field is useful for setting up a link to an internal help desk. Can contain any URL up to 63 characters.

Status

The home page for the print server shows general status information including the status of all printers currently attached. For more detailed status information, select the **View Cnfg Sheet** link under the *Status* menu. This will show information similar to what is printed on the print servers configuration sheet.

Print Job Log

The Print Job Log page provides information on print jobs, system up time and total jobs printed.

Support

There are up to four links listed under the *Support* menu.

Contact

This page provides the necessary addresses and phone numbers for contacting Oki Data Customer Support.

FAQ

By default this link will connect you to the FAQ page on the OKI Web Server. This link can be configured to point to other locations by selecting the **Admin(Web)** link under the *Configuration* menu.

Updates

By default this link will connect you to the firmware update location on the OKI FTP Server. This link can be configured to point to other locations by selecting the **Admin(Web)** link under the *Configuration* menu.

Custom Link

This link will only appear if it has been configured by selecting the **Admin(Web)** link under the *Configuration* menu. This link can be used to access internal help desk sites.

Reset

Reset

Reset the print server by selecting the **Reset** link under the *Reset* menu. A message will appear asking you to confirm the reset.

Restore

Select **Restore Defaults** under the *Reset* menu to restore selected protocols to factory defaults. Select the individual protocols to be restored and then select the **Restore Selected Protocols** button. All protocols can be restored simultaneously by selecting the **Restore All Protocols** button.

OkiLAN 6120e Server Discovery

An HTML file containing links to all OkiLAN 6120e print servers on the network can be created using the OkiNet utility for TCP/IP. Complete the following steps to create the HTML file:

1. Install and run the OkiNet for TCP/IP utility. The utility will discover and display all OkiLAN 6120e print servers on the local network.
2. Create a custom view, if desired, to control which devices are displayed. See *Creating Customized Views* in the OkiLAN 6120e Users Guide, Section IV.
3. Select **Save View to HTML** under the *File* menu.
4. Enter a name and save the file.
5. From the Web browser, select **Open** under the *File* menu and enter the path and name of the file saved in step 4.
6. You can now create a bookmark or add the file to your list of favorites.

Note: This file does not update automatically. The OkiNet utility must be run again to obtain current information.

Troubleshooting

Server Connection

- The print server only supports two simultaneous HTTP connections. If your browser fails to connect to the print server, the browser may be trying to open more than two connections. Please refer to your browser's Help files for information on changing the connection settings. Both Netscape Navigator and Microsoft Explorer for the Macintosh and Power PC will sometimes display a failure to connect message after being configured for only two connections. Should this occur, select **OK** to bypass the error message. The menu page will still be displayed and configuration can be completed.
- Quickly refreshing a page within some browsers can cause the browser to leave active connections open with the server called a *hung connection*. This will use up one of the HTTP connections, can cause problems connecting to the server and will slow down Web response time. If TCP timeout checking is enabled under TCP/IP configuration, the *hung connection* will timeout after the timeout period has expired.

Login

- If you forget the administrator password, restoring the TCP/IP protocol to factory defaults from any other configuration utility restores the Web admin name and password to default values.

Configuration

- Web browsers will generally cache previously viewed Web pages on the local machine. To view the most current print server information, it is a good idea to select the **Reload** or **Refresh** button on your browser instead of using the **Back** button.

Chapter 5

Additional Management Features

OkiNet Alert

OKI OkiNet Alert enterprise management utility allows administrators to proactively manage printers by being immediately alerted to printing problems before they are encountered by users. This remote management utility can be configured to monitor all SNMP traps from a list of printers chosen by the administrator, without requiring HP OpenView. It runs in the background on any Windows-based PC and alerts the user with a sound or a screen flash when an error has occurred, and OkiNet Alert can be configured to respond only to the specific error conditions that are of concern to you. You can also launch batch files on given error conditions. OKI OkiNet Alert can be used in IPX and IP environments. Additionally, multiple traps can be sent to multiple destinations on the network.

Enhanced Printer Status

The OkiLAN 6120e communicates with the printer to monitor the current condition on the printer. This information can be observed in real time via the utilities or can be interpreted by the OkiLAN 6120e to generate traps to your SNMP management utility of choice: HP OpenView or the OKI OkiNet Alert utility.

For bi-directional capable printer the OkiLAN 6120e can retrieve the printer information, such as front panel message, and display it through the OkiNet utilities.

OkiNet for NDS

OkiNet for NDS allows administrators to create and manage OKI print server objects in the NDS tree. OkiNet for NDS integrates into Novell's NetWare Administrator, NetWareAdmin. For more information, see *OkiNet for NDS* under *NetWare* in this manual.

OkiNet for TCP/IP (Creating Custom Views)

OkiNet for TCP/IP allows discovery on a pure TCP/IP Windows environment. To assign a TCP/IP address assignment, simply select *Discover Unconfigured Device* and double-click. To create multiple views and customize the viewing environment, specify devices and define *Filters, Sorts, Columns, Search Information* and *Refresh* rates. For more information about OkiNet for TCP/IP, see *Creating Custom Views* under the TCP/IP section of this manual.

NetWare Load Balancing

Using this feature, administrators can distribute the print load among several print servers. Simply assign the queue to the desired print ports on the selected print servers.

Windows Printing

From a Windows operating system, using TCP/IP or DLC protocols, the OkiNet Connect utility routes the print job to the appropriate printer without passing through a file server or print queue. This cuts down on network printing traffic. For more information, see the *Windows Printing* section of this manual.

Printer Security for TCP/IP Printing

The OkiLAN 6120e print server has a *Printer Security for TCP/IP Printing* feature which allows the printers to only be accessed from a specified list of IP addresses. This feature is accessed via TELNET option #9, *TCP Connection Configuration*.

Section III:

NetWare

In This Section

Chapter 1 Introduction	III-4
Overview	III-4
Before You Start	III-4
Selecting PServer or RPrinter/NPrinter Mode	III-5
Chapter 2 OkiNet for NetWare	III-6
Overview	III-6
Running OkiNet for NetWare	III-7
Configuring the OkiLAN 6120e Using OkiNet for NetWare	III-7
NetWare Configuration Options	III-8
NetWare Queues Configuration Options	III-9
NetWare Port Configuration Options	III-10
TCP/IP Configuration Options	III-10
EtherTalk Configuration Options	III-11
Output Port Configuration Options	III-11
SNMP Configuration Options	III-13
SNMP Traps Configuration	III-15
Saving the Configuration	III-16
Enabling/Disabling Protocols	III-17
Displaying OkiLAN 6120e Diagnostic Information	III-17
Printing a Configuration Sheet	III-17
Resetting the OkiLAN 6120e	III-17
Restoring Factory Default Settings	III-18
Creating Customized Views	III-19
Modifying View Settings	III-20
Permanently Defining SNMP Access Information	III-22

Chapter 3 OkiNet for NDS	III-24
Overview	III-24
Installing OkiNet for NDS for Novell NetWare 4.1	III-25
Installing OkiNet for NDS for Novell NetWare 4.x, NetWare 5.x, and Windows 3.x	III-26
Installing OkiNet for NDS for Novell NetWare 4.x, NetWare 5.x, Windows 95/98 and Windows NT/2000	III-27
Creating a New OkiLAN 6120e Object	III-28
Printing with an OkiLAN 6120e Print Server	III-29
Configuring the OkiLAN 6120e Using OkiNet for NDS	III-31
Adding or Removing the OKI Print Server Class	III-31
 Chapter 4 Using the OkiLAN 6120e in NDPS (NetWare 4.x, 5.1 or Higher)	 III-33
Introduction	III-33
Adding the Oki Printer Driver Using NDPS Broker	III-33
Setting Up the OkiLAN 6120e Through NWAdmin32	III-35
Setting Up the OkiLAN 6120e for Public Access Printers At the File Server Console	III-37
Setting Up the OkiLAN 6120e in NetWare 5.1x or Higher in TCP/IP	III-38

Chapter 1: Introduction

Overview

This section contains instructions and information on how to configure your OkiLAN 6120e in the NetWare environment.

There are three environments in which to configure the OkiLAN 6120e:

- Bindery (NetWare 3.x)
- NetWare Directory Services (NDS)—for NetWare versions 4.1 and later
- NDPS for NetWare 4.x and 5.x.

Before You Start

- You should be familiar with network administration as well as the physical setup and operation of your network.
- Write down the serial number and the Ethernet or Token-Ring address of your OkiLAN 6120e. You will find these numbers on the OkiLAN 6120e enclosure.
- Install the OkiLAN 6120e hardware and connect the cabling—see Section I. Instructions for hardware installation are found in Section I of this manual.
- Install the OkiNet Utility for NetWare—see Section I.

Selecting PServer or RPrinter/NPrinter Mode

Your OkiLAN 6120e supports both PServer and NPrinter mode. There are several factors to consider when choosing which mode to use.

In PServer mode, the OkiLAN 6120e operates as the print server. It services specified queues on the network. In RPrinter mode, the NetWare Print Server NLM or EXE is in control.

Feature	PServer Mode	RPrinter/NPrinter Mode
User Connection	Requires one NetWare user connection per OkiLAN 6120e.	Requires no user connection.
Performance	High performance.	Good performance.
Installation	Easier to set up. Requires fewer steps.	More steps to set up, but works well with existing utilities.
Print Server	Separate print server node, print server functions, and NetWare print server software not required.	Requires NetWare print server software. Integrates with NetWare print utilities.
Status Reporting	Printer status is reported via messages sent to client nodes. Job status is available via job notification. Printer status available via OkiNet utilities.	Printer status is reported via PCONSOLE, PSC, and print server screen. Job status is reported via the print server screen, PSC, job notification.
Security	Without supervisor intervention, other printers cannot access data sent to the queues. Data can be password protected from the file server to the printer.	Data can be password protected from the file server to the printer.

Chapter 2

OkiNet for NetWare

Overview

This chapter contains information about how to configure the OkiLAN 6120e in Bindery and NDS environments using the OkiNet for NetWare utility.

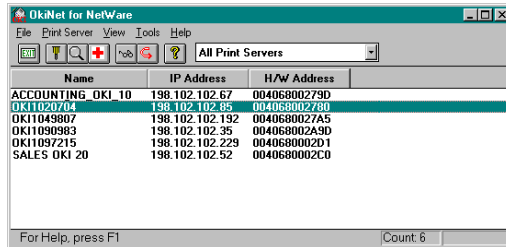
Note: OkiNet for NetWare contains minimal NDS configuration support. For more extensive configuration options, use the OkiNet for NDS utility described in Chapter 3.

OkiNet for NetWare allows you to:

- Configure the OkiLAN 6120e for all Supported Protocols
- Display OkiLAN 6120e Diagnostic Information
- Print a Configuration Sheet
- Reset the OkiLAN 6120e
- Restore Factory Default Settings
- Create Customized Views
- Modify View Settings
- Permanently Define SNMP Access Information

Running OkiNet for NetWare

To run the utility, double-click on the **OkiNet** icon. The main *OkiNet for NetWare* screen will display.



By default, the *All Print Servers* view is selected and all print servers attached to the network from which the OkiNet utility is running are listed.

Configuring the OkiLAN 6120e Using OkiNet for NetWare

The following steps outline how to configure an OkiLAN 6120e.

1. Select the OkiLAN 6120e you wish to configure.
2. Select **Configuration** from the *Print Server* menu or select the **Configuration** icon on the toolbar.
3. Set the appropriate configuration by choosing the applicable file folder tabs.

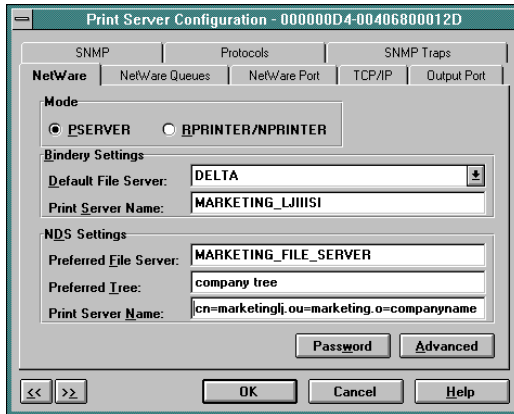
The following settings are configurable based on the capabilities of the OkiLAN 6120e:

- NetWare
- NetWare Queues
- NetWare Port
- TCP/IP
- Protocols
- Output Port
- SNMP
- VINES *
- EtherTalk
- SNMP Traps

* *May apply to other OkiLAN print server models.*

NetWare Configuration Options

To configure options specific to the NetWare protocol, select the **NetWare** file tab. The following screen will display:



***P*Server or *R*Printer Mode**

Several factors should be considered when choosing between PServer or RPrinter mode. For more detailed information regarding these modes, see page III-5.

***B*indery Settings**

- ***Default File Server*** - The default file server can be selected from any file server listed in the *Default File Server* scroll menu. The default file server must be active at power up for the OkiLAN 6120e to recognize other servers.
- ***Print Server Name*** - Enter the print server name of your choice.

NDS Settings

NDS settings need to first be created and setup using the NWAdmin or PConsole utility. Create an NDS print server object. Then, create one NDS printer object per output port. For example, Printer 1 goes to Port 1, Printer 2 goes to port 2. Attach NDS print queues to the NDS printer objects. Once you have created NDS objects and queues, use the OkiNet for NetWare utility to configure the following fields:

- **Preferred File Server** - This is the file server on which the print server object was created.
- **Preferred Tree** - This is the NDS tree on which the NDS print server object was created.
- **Print Server Name** - The fully qualified (canonical) name of the NDS print server object that was created. The Print Server Name is case sensitive.

Example:

cn=marketinglj.ou=marketing.o=companyname

where *cn* is the Common Name of the leaf object, *ou* is the Organizational Unit name, and *o* is the Organizational name.

Note: After any change to the servicing of queues for the OkiLAN 6120e from NWAdmin or PConsole, the OkiLAN 6120e must be reset via OkiNet for NetWare.

NetWare Queues Configuration Options

The NetWare Queues option allows you to add bindery print queues to be serviced by first selecting each desired queue and then selecting the → button.

To have a queue print to an output port other than the currently selected port, select the Output Port button and then select the desired port.

NetWare Queue Load Balancing

Print jobs can be distributed to multiple printers on selected queues by selecting the same queue multiple times and selecting a different output port for each queue entry.

NetWare Port Configuration Options

To modify the NetWare port settings to fit your NetWare printing environment, select the **NetWare Port** file tab.

TCP/IP Configuration Options

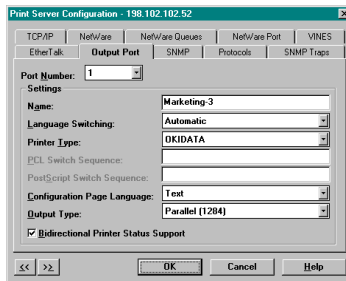
To modify configuration settings specific to the TCP/IP protocol such as IP address, subnet mask and default gateway. For specific information on TCP/IP configuration options, see Section IV, *TCP/IP*, or select the **HELP** button on the bottom right of the screen.

EtherTalk Configuration Options

To modify configuration settings specific to the EtherTalk protocol such as the name and zone. For specific information on other EtherTalk options, see Section VII, *EtherTalk*, or select the **HELP** button on the bottom right of the screen.

Output Port Configuration Options

To configure the OkiLAN 6120e output port, select the **Output Port** file tab. The following screen will display:



Port Number

Select the port you wish to configure.

Name Field

Enter a descriptive name to identify the port.

Language Switching

Each output port can be configured to perform the following language switching options: OFF, PCL, PostScript or Automatic. Unless *OFF* is selected, a language switching character string will be inserted before each print job. The *Printer Type* selection is used to determine the actual characters required to switch the language of the printer.

- **OFF** - Print data stream will be sent directly to the output port without alteration.
- **PCL** - Inserts the appropriate character string in front of each print job to switch the printer to the PCL print language.

- **PostScript** - Inserts the appropriate character string in front of each print job to switch the printer to the PostScript printer language.
- **Automatic** - Enables the auto language sensing function. This function examines the print job data stream and determines the required print language and inserts the appropriate character string in front of each print job to switch the printer to the appropriate printer language.

Note: If you are not switching languages or the printer can switch languages automatically, this option should be set to *OFF*.

Printer Type

The Printer Type selection is used to determine the actual character string required for your printer. If your printer type is not listed, select **Other** and enter the character string for switching the printer to PCL or PostScript mode.

To enter nonprintable characters, enclose the ASCII value of the character in angle brackets. For example, to enter the ESC character type: <27>.

PCL Switch Sequence

Enter the character string to switch the printer to the PCL print language.

PostScript Switch Sequence

Enter the character string to switch the printer to the PostScript print language.

Configuration Page Language

Select the appropriate printer language for printing configuration pages on your printer.

Note: Do not set the Configuration Page Language to *OFF* for all ports of your OkiLAN 6120e. If a configuration sheet cannot be printed, troubleshooting abilities are limited.

Bi-directional Printer Status Support

Enable this option for enhanced status from bi-directional printers that support PjL.

Output Type

Select the desired level of support for 1284 communications. The following settings are available:

- **Compatibility (no bidi)**
- **1284 (Std Nibble Mode)** (default)
- **1284 (ECP or Fast Nibble Mode)**

SNMP Configuration Options

SNMP options specify which information is necessary for an SNMP manager to access the OkiLAN 6120e. The system variables are for user convenience and are optional.

SNMP community names are used as passwords to *GET* and *SET* information on the OkiLAN 6120e. The values should be changed for enhanced security.

To configure SNMP specific information, select the **SNMP** file tab. The following screen will display:

The screenshot shows a window titled "Print Server Configuration - 198.102.102.52". It has several tabs: TCP/IP, NetWare, NetWare Queues, NetWare Port, VINES, EtherTalk, Output Port, **SNMP**, Protocols, and SNMP Traps. The SNMP tab is active. The fields are as follows:

System Name:	Marketing Group Printer 3
System Contact:	John @ ext 1234
System Location:	Building 3, main aisle, third cubicle
Get Community Name:	*****
Set Community Name:	*****
Trap Community Name:	public

At the bottom, there are navigation buttons: <<, >>, OK, Cancel, and Help.

Note: SNMP options need to be configured only if you are managing OkiLAN 6120e products or getting system information using SNMP.

Fill in the following information:

System Name

Enter the name of your choice. This name will identify the OkiLAN 6120e in your SNMP-based management program.

System Contact

Enter any information useful to a user if problems with the OkiLAN 6120e arise.

System Location

Enter a description of the OkiLAN 6120e location.

Get Community Name

This field is used to set the community name required to Get information from the print server. The default community name is *public*.

Note: To use the JetAdmin utility with the OkiLAN 6120e, the Get and Set Community Names must be set to public.

Set Community Name

This field sets the community name required to Set information on the OkiLAN 6120e. The default community name is public.

Note: The OkiLAN 6120e cannot be configured without the correct Set community name. To secure the configuration of the OkiLAN 6120e, change the community name from the default setting.

Trap Community Name

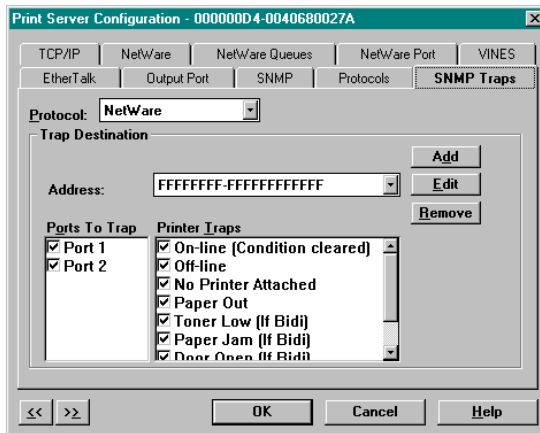
Enter the community name which will be used when traps are sent from the OkiLAN 6120e. This setting allows trap utilities to only accept traps from devices with appropriate community names.

The *Trap* community name field is used by the OKI OkiNet Alert and other monitoring utilities for grouping or filtering OkiLAN 6120e devices. OkiNet Alert assists in managing network printers by immediately alerting you of printer problems.

SNMP Traps Configuration

The SNMP Trap option allows configuration of traps. Traps are unsolicited information concerning the OkiLAN 6120e. Traps can be sent to an SNMP manager or be broadcast to all hosts on the local segment.

To configure SNMP traps, select the **SNMP Traps** file tab. The following screen will display:



Fill in the following information:

Protocol

Select the protocol for which you wish to configure trap information.

Trap Destination

- **NetWare Protocol** - Enter the network number and hardware address, respectively, to which traps will be sent. To broadcast traps to all addresses on all networks, enter FFFFFFFF (8 characters) in the first field and FFFFFFFFFFFFFFFF (12 characters) in the second field. To broadcast traps to all addresses on a specific network, enter the network number in the first field and then FFFFFFFFFFFFFFFF (12 characters) in the second field.
- **TCP/IP Protocol** - Enter the IP address to which traps will be sent. The IP address must follow the format XXX.XXX.XXX.XXX, where each XXX is a number from 0 to 255. To broadcast traps to all hosts on the local subnet, enter 255.255.255.255.

Ports to Trap

Select the output ports on which you wish traps to be active.

Printer Traps

Select the printer traps to be activated. The following printer conditions may cause a printer trap to occur if the OKI printer model supports the features:

- On-line
- Off-line
- No Printer Attached
- Paper Out
- Toner Low
- Paper Jam
- Door Open
- Printer Error

Note: *Toner Low, Paper Jam and Door Open* require the printer to be set in PCL or Auto mode.

Saving the Configuration

Once all settings have been defined, select **OK**. The settings will be saved and you will be returned to the main *OkiNet for NetWare* screen.

Enabling/Disabling Protocols

To enable or disable protocols on the OkiLAN 6120e, select the **Protocols** file tab. Select each protocol you wish to enable. If you disable a protocol, the OkiLAN 6120e will no longer communicate using that protocol.

To reduce unnecessary network traffic, disable unused protocols.

Displaying OkiLAN 6120e Diagnostic Information

To view OkiLAN 6120e diagnostic information, select **Diagnostics** from the *Print Server* pull-down menu on the main *NetWare Print Manager* screen. Diagnostic information is available for the following topics:

- Printer
- Print Server
- Protocols
- Network
- Statistics
- Technical Support
- System

Printing a Configuration Sheet

The configuration sheet provides current network, print server and printer information. To print a configuration sheet, select the OkiLAN 6120e from the list of available print servers. Select **Print Configuration Sheet** from the *Print Server* menu bar.

Resetting the OkiLAN 6120e

To reset the OkiLAN 6120e, select the OkiLAN 6120e from the list of available print servers. From the *Print Server* menu bar, select **Reset**.

CAUTION: Make sure there are no print jobs active when you reset the OkiLAN 6120e. All protocols will be restarted. If you attempt a reset while a job is printing, the job may not print successfully.

Restoring Factory Default Settings

To restore the OkiLAN 6120e to factory default settings, select the OkiLAN 6120e from the list of available print servers. From the *Print Server* menu bar, select the **Reset** option. Choose one or more of the following options:

Output Ports

Restores settings related to output ports such as port name and output type.

TCP/IP

Restores settings specific to the TCP/IP protocol configuration such as the IP address and subnet mask.

NetWare

Restores settings specific to the NetWare protocol configuration such as the mode and default file server.

EtherTalk

Restores settings specific to the EtherTalk protocol configuration such as the name and zone.

Once you have chosen the desired options, select **Restore**. To completely restore the print server to factory default settings, select all items in the list.

CAUTION: Make sure there are no active print jobs when you select *Restore Factory Defaults*. If you reset the *OkiLAN 6120e* while a job is printing, the job may not print successfully.

Creating Customized Views

OkiNet for NetWare allows users to create multiple customized views for the list of OkiLAN 6120e products. By creating different views, the user can narrow the information displayed to that which is of highest priority. These views can be saved and selected as needed.

OkiNet has two predefined views. The *All Print Servers* view displays all the print servers available on your local network. The *Unconfigured Print Servers View* displays only the print servers on the local network that have not been configured.

Creating a New Customized View

To create a new view, select the **New** option from the *View* menu. Enter a name for the new customized view. Define *Filters*, *Sorts*, *Column*, *Search* information and *Refresh* rates (see the *Modifying View Settings* sections for more detail). Select **OK** to save this view.

Selecting an Existing View

To select an existing view, choose **Select** from the *View* menu. Highlight the view you wish to open and select **OK**. The OkiLAN 6120e list in the utility will be displayed as described by the view selected.

Searching for a Specific OkiLAN 6120e

To search for a specific OkiLAN 6120e, select **Search** from the tools menu. Choose the **Search List** option to search for OkiLAN 6120e products already listed. For OkiLAN 6120e products which cannot be found in the list, select the **Search Network by Address** option. For more information about this option, select **HELP**.

Modifying View Settings

Before modifying the settings, select the name of the view you wish to edit from the *Name* field.

Display Filter

The filter option displays only those print servers matching specific criteria. The print server list can be filtered by any of the following:

Filter By	Enter for the Filter Value
<No Filter>	No value
DateCode	Four digits followed by a letter (e.g. 9502B)
H/W Address	12 hexadecimal digits for the hardware address
Name	NetWare print server name
Product #	Select from the list of product number(s)
Product Type	Select from the list of product types
Status	Select from the list of status conditions
Default File Server	The default NetWare file server
Mode running	The NetWare mode the print server is
Network #	The IPX network number

Search Filter

The Search option defines the criteria for locating OkiLAN 6120e products on the network.

- **Search Local Network** - This method searches the bindery to locate all OkiLAN 6120e products on the network. All OkiLAN 6120e print servers that respond are placed in the list. If you have a large number of OkiLAN 6120e print servers on your network and do not wish to view all of them, do not select this option.

- **Specify Devices/Networks** - This method adds specific print servers (or groups of print servers) to the list. This can be useful when only a subset of the list of OkiLAN 6120e products is desired.

To select all desired print servers, select **Add**.

Sort

The Sort option displays the OkiLAN 6120e list in a specific order. The list can also be sorted by clicking on the column by which you wish to sort. A sort order can only be defined on columns displayed on the main *OkiNet for NetWare* screen.

Columns

Column information for each print server can be modified. To define the location of a new column, select the location in the *Columns Displayed* field where you wish the new column to be inserted, then select **Add**. If no location is selected, the new column will be added to the end of the list and the column will be displayed to the right of the last column on the screen. For example, if you currently have three columns displayed and you wish to add a fourth column to the far left of the screen, follow these steps:

1. Select the first column in the *Columns Displayed* field.
2. Select the column to be added from the *Columns Available* field.
3. Select **Add**.

Columns may also be removed by selecting **Remove** from the *Columns Available* field.

Refresh

The refresh rate defines how often the OkiNet for NetWare utility updates the main print server list. To define a refresh rate, select the **Automatic Refresh** box and then enter the refresh rate in the field provided. Decide how frequently to refresh the screen based on factors such as network traffic and desire for most recent information. For example, if traffic is not an issue on your network and the most current information is desired, set the refresh rate to 1 so the screen is updated every minute. If network traffic is an issue, you may wish to set the refresh rate to 10. This would update the screen every ten minutes and minimize network traffic.

Permanently Defining SNMP Access Information

Access to OkiLAN 6120e configuration and diagnostic information is determined by using community names. The *Special Options* window is used to permanently define access information so it does not need to be entered each time the OkiLAN 6120e is accessed. To *Get* and/or *Set* information on the OkiLAN 6120e through OkiNet for NetWare, community names used by the utility must match the community names assigned to the OkiLAN 6120e.

To configure the OkiNet for NetWare utility to use the correct community names, select **Special Options** from the *File* menu.

Serial/Network Numbers

This field displays the serial number of each OkiLAN 6120e or the network number for a network of OkiLAN 6120e products for which the OkiNet utility has defined access. To add a new serial number or network number to this list, select the **Add** button.

Get Community Name

Enter the *Get* Community Name necessary to access the OkiLAN 6120e or group of OkiLAN 6120e products selected.

Set Community Name

Enter the *Set* Community Name necessary to access the OkiLAN 6120e or group of OkiLAN 6120e products selected.

Add

Select the **Add** button to define access to a new OkiLAN 6120e or a group of OkiLAN 6120e products. Enter a serial number or a network number followed by a dash (-). Use an asterisk (*) as a wildcard to match multiple devices. As examples, to add a single OkiLAN 6120e, enter 1500001, or to add a whole network, enter D4-.

Delete

The **Delete** button deletes an OkiLAN 6120e access entry in the *Serial/Network Number* list.

Chapter 3

OkiNet for NDS

Overview

OkiNet for NDS is a Dynamic Link Library (DLL) which allows users to create and manage OKI print server objects in the NDS tree. OkiNet for NDS integrates into Novell's NetWare Administrator, a Windows-based utility that allows users to view and manage their NetWare 4.x NDS tree. Once OkiNet for NDS is integrated into NetWare Administrator, users can manage OKI devices with the same utility used to manage other network objects such as printers and queues.

The OkiLAN 6120e supports NetWare NDS using Novell Embedded Systems Technology, also known as NEST.

OkiNet for NDS can be installed to support Novell NetWare version 4.1 or 4.11 and for operating systems running Windows 3.x, Windows 95/98, and Windows NT/2000. If you have multiple versions of Windows operating systems to service, you can install OkiNet for NDS for each.

OkiNet for NDS supports four different versions of NWAdmin.

- OkiNet for NDS installation for NetWare version 4.1 (one version of NWAdmin) requires a single installation which will work for all platforms including Windows 3.x, Windows 95/98, and Windows NT/2000.
- The OkiNet for NDS installation for NetWare version 4.11 requires a separate installation for each of the three platforms: Windows 3.x, Windows 95/98, and Windows NT/2000 (three separate versions of NWAdmin).

Refer to the following table to determine which method to use to install OkiNet for NDS:

NetWare Version	Client Operating System	
	Windows 3.x	Windows 95/98 Windows NT/2000
NetWare 4.1	See Installing OkiNet for NDS for Novell NetWare 4.1	
NetWare 4.11 and NetWare 5	See Installing OkiNet for NDS for Novell NetWare 4.11 and Windows 3.x	See Installing OkiNet for NDS for Novell NetWare 4.11 and Windows 95/98 and Windows NT/2000

Installing OkiNet for NDS for Novell NetWare 4.1

A single installation is required to service Windows 3.x and Windows 95/98 operating systems with OkiNet for NDS for Novell NetWare 4.1. OkiNet for NDS must be installed in the same location you have installed NetWare Administrator. This may be located on the file server or on an independent workstation. In most cases NetWare Administrator can be found in the SYS:\PUBLIC directory. To install OkiNet for NDS for Novell NetWare 4.1 and Windows 3.x and/or Windows 95/98:

1. Login to the directory tree as a user with Admin rights at the root of the directory tree.
2. Run the installation program provided. Select the option to install OkiNet for NDS. Follow the instructions on the screen.

Tip for Advanced Administrators

When installing OkiNet for NDS, the install utility copies the OkiNet for NDS files to the destination directory, adds the OKI print server class to the NDS schema and modifies the user's *NWADMIN.INI* file.

Installing OkiNet for NDS for Novell NetWare 4.x, NetWare 5.x, and Windows 3.x

OkiNet for NDS must be installed in the same location you have installed NetWare Administrator. This may be located on the file server or on an independent workstation. In most cases NetWare Administrator can be found in the SYS:\PUBLIC directory. To install OkiNet for NDS for Novell NetWare version 4.11 and Windows 3.x:

1. Login to the directory tree as a user with Admin rights at the root of the directory tree.
2. Install OkiNet for NDS.–see Section I.

Tip for Advanced Administrators

When installing OkiNet for NDS, the install utility copies the OkiNet for NDS files to the destination directory, adds the OKI print server class to the NDS schema and modifies the user's *NWADMIN3X.INI* file.

Installing OkiNet for NDS for Novell NetWare 4.x, NetWare 5.x, Windows 95/98 and Windows NT/2000

OkiNet for NDS must be installed in the same location you have installed NetWare Administrator. This may be located on the file server or on an independent workstation. In most cases NetWare Administrator can be found in the *SYS:\PUBLIC\Win95* or *SYS:\PUBLIC\WinNT* directory. To install OkiNet for NDS for Novell NetWare version 4.11 and Windows 95/98 and Windows NT/2000:

1. Login to the directory tree as a user with Admin rights at the root of the directory tree.
2. Install OkiNet for NDS—see Section I.

Tip for Advanced Administrators

When installing OkiNet for NDS, the install utility copies the OkiNet for NDS files to the destination directory, adds the OKI print server class to the NDS schema and modifies the user's registry.

Creating a New OkiLAN 6120e Object

To create a new OkiLAN 6120e object from Novell's NetWare Administrator, perform the following steps:

1. Select the container (also known as organizational unit) in which you want the object created. For example, to create an object that is within the sales organizational unit, select **SALES**.
2. From the *Object* menu, select **Create**. If the *Create* option is grayed, you do not have sufficient rights or you have selected a leaf object.
3. From the *Class of New Object* list box, select **OKI Print Server**. If the *OKI Print Server* is not listed, check the following:
 - The OkiNet for NDS utility has been installed.
 - The OKI Printing Device has not been removed from the schema. See *Adding or Removing the OKI Print Server* section for more information.
4. Click **OK**.
5. Define filter and sort criteria for displaying a list of Extended Systems devices from which to choose.
6. Click **OK**. The *Create Print Server* screen will display.

Note: If the *Device* list box is still empty, select **Find Device**. This will allow you to locate the specific device you are trying to define. You will be prompted for the Ethernet address and network number of the device. A mismatch in the OKI device frame format may cause the device not to show up in the Device list box.

7. From the list of OKI devices, select a device to assign to the object.
8. Enter a name for the new OKI Print Server object.
9. Select **Create**.

The new OKI Print Server object should now appear in the directory tree.

Printing with an OkiLAN 6120e Print Server

To configure the NetWare environment for printing to an OkiLAN 6120e print server, follow these steps:

1. Install the OkiLAN 6120e hardware and connect the cabling (if necessary). Instructions for hardware installation are found in Section I of this manual.
2. Create an **OKI Print Server** object. If you are unfamiliar with how to do this, see the previous section.
3. Open the **OKI Print Server** object's *Details* dialog. This may be done by double-clicking on the OKI print server icon in the NDS tree or by selecting *Details* from the **File** menu.
4. If your OkiLAN 6120e supports both PServer and NPrinter mode, there are several factors to consider when choosing which mode to use. See page III-5 for more information. From the **Identification** page, select either *PServer* or *NPrinter* mode. If you select *NPrinter* mode, skip to Step 11.
5. From the *Assignments* page, choose the **Port #** associated with the printer to which the queue will print.
6. Select **Assign**.
7. Select or create a NetWare **Printer** object from the *Printer/Queue Assignments* dialog.
8. Select or create a NetWare **Print Queue** object from the *Printer/Queue Assignments* dialog.
9. Select **OK** to save your printer and queue selections.

Note: To load balance print queue jobs, repeat steps 5 through 9 for another port. Create a new printer object for the OkiLAN 6120e port and then select the same print queue object. This will allow multiple printers to service a single print queue.

10. From the *Assignments* page, select **OK** to save changes. If you have selected *PServer* mode, you have completed all necessary steps. Continue to *Configuring the OkiLAN 6120e Using OkiNet for NDS*.
11. Select or create a NetWare **Print Server** object from the *Assignments* page.
12. Select a port to configure from the *Assignments* page, then select **Assign**.
13. Select or create a NetWare **Printer** object from the *Printer/Queue Assignments* dialog.
14. Select or create a NetWare **Print Queue** object from the *Printer/Queue Assignments* dialog.
15. Select **OK** to save your printer and queue selections.
16. From the *Assignments* page, select **OK** to save changes.
17. From the file server, restart the PSERVER.nlm.

Configuring the OkiLAN 6120e Using OkiNet for NDS

The following steps outline how to configure an OkiLAN 6120e.

1. From the *NWAdmin* screen, select (double-click) the OkiLAN 6120e you wish to configure.
2. Set the appropriate configuration by choosing the applicable detail pages.

The following settings are configurable:

- Identification
- Network Protocols
- Assignments
- Port Configuration
- Network Configuration
- Status

For specific information about these detail pages, select the **HELP** button.

Adding or Removing the OKI Print Server Class

The OKI print server class is added to Novell's NetWare Administrator by the installation utility. This class must exist in order to create an OKI Print Server object for use in printing to the device.

Removing the OKI Print Server Class

1. Run Novell's NetWare Administrator.
2. Verify all OKI print server objects have been removed from the directory tree.
3. From the *Tools* menu, choose **Remove OKI Printing Device Class**. The OKI print server class will no longer show up in the *Create New Object* dialog. If the *Remove OKI Printing Device Class* option is grayed, the class has already been removed. If the option does not exist, OkiNet for NDS is not installed.

The install utility on the installation diskette can also be used to remove the OKI print server class. This utility removes the class from Novell's NetWare Administrator and removes all the associated files that were copied during the installation process.

Note: Be sure to remove all OKI Print Server objects from the directory tree before uninstalling OkiNet for NDS.

Adding the OKI Print Server Class

The OKI print server class is initially added to Novell's NetWare Administrator when the Install utility is run from the diskette. If the OKI print server class has been removed through Novell's NetWare Administrator's *Tools* menu, you will need to add the class again.

From the *Tools* menu in Novell's NetWare Administrator, choose **Define OKI Printing Device Class**. If this option is grayed, the class has already been added. If the option does not exist, you will need to run the install utility from the diskette to install OkiNet for NDS.

The OKI print server class will now appear in the *Create New Object* dialog.

Chapter 4

Using the OkiLAN 6120e in NDPS (NetWare 4.x , 5.1 or Higher)

Introduction

Novell® Distributed Print Services™ (NDPS®) is Novell's new printing architecture for use with NetWare versions 4.x, 5.1 and higher. To use the OkiLAN 6120e in NDPS, you must add the OKI printer driver(s) to the NDPS Broker.

Requirements:

- IP Address on the file server
- IP address on the print server (NetWare-only print servers will not work)
- The client must also run the most current version of the NetWare client to get the NDPS objects.

Note: The client printing to the printer *does not* need an IP address.

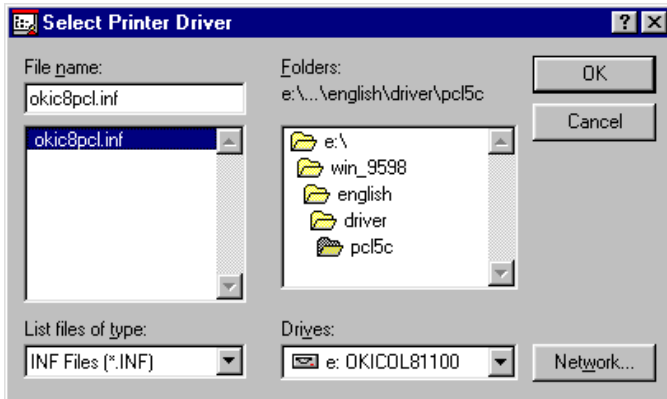
Note: If you are using NetWare 5.1x or higher in TCP/IP, a quicker setup procedure is described in *Setting Up the OkiLAN 6120e in NetWare 5.1x or Higher in TCP/IP* below.

Adding the OKI Printer Driver Using the NDPS Broker

Printer drivers cannot be installed to the Resource Management Service from multiple floppy disks. If a printer driver is shipped on more than one disk, copy the files to a directory on a hard drive or network drive and install the driver from there. Any problems in adding the driver should be addressed to the OKI Customer Service Center.

1. In NetWare Administrator, double-click the Broker object.
2. Click the **Resource Management Service (RMS)** tab.
3. Make sure the Resource Management Service is enabled.
4. Click **Add Resources** to display the Manage Resources dialog box.
5. Select the icon for the type of printer driver that you want to add under the Resource Types window.
A complete list of currently loaded printer drivers of that type appears in the Current Resources window.

6. To add a driver to the list, click **Add** to display the Add Resources dialog box.
7. Click **Browse** to display the Select Printer Driver dialog box. Locate the appropriate printer driver .INF file.



8. Select the .INF file and click **OK**. The .INF file and path is selected in the Resource location box. The printer drivers are in the Resources To Be Added box.
9. Click **OK** on the Add Resources Window.
10. Click **OK** on the Manage Resources window.
Note: When the Manage Resources window re-appears, the printer driver(s) have been added to the NDPS Broker.
11. Click **Cancel** on the NDPS Broker window to EXIT the NDPS Broker.

Setting Up the OkiLAN 6120e Through NWAdmin32

There are two types of printers available with NDPS. One is Public Access, which anyone on the tree can get to. The other is Private Access, which requires rights to the object. For Public Access printers, the NDPS Printer can be created at the file server console or through Novell's NetWare Administrator (NWAdmin32). The File Server Console approach offers less flexibility in configuration. Both approaches are described in this and the following subsection.

Setting Up the OkiLAN 6120e for Public Access Printers

1. Create NDPS Manager.
2. Double click **NDPS Manager**.
3. Go to Printer Agent List
4. Click **New**. Enter a name for the Agent.
5. Select **NDPS Manager Name**.
6. Select **Novell Printer Gateway** as the Gateway type and click **OK**.
7. Select **NONE** as your Printer Type, select **Novell Port Handler** as the Port Handler Type and click **OK**.
8. Select **Remote (LPR on IP)** and click **Next**.
9. From the OkiLAN 6120e Configuration Sheet, get the print server's IP address and use it for the Host Address Box of the Novell Gateway Utility. Then, enter the print server's IP address. Also from the Configuration sheet, get the output port of the print server. Then, enter the output port as the Printer Name. Click **Finish**.
10. If the "Loading Printer Agent" screen stays on for more than 60 seconds, click "**Stop Waiting**."
11. Ignore the error message, "The Printer Agent Just Created Needs Attention."
12. Choose the printer drivers and click **Continue**.
13. The Status should show Idle.

Private Access Printers: these can only be created through NWAdmin32

1. Create NDPS Manager in NWAdmin32.
2. Go to the Context in which the Private Printer is to reside.
3. Select **Create**. The New Object screen appears.
4. Click **NDPS Printer**, then click **OK**. Click the **Define Additional Properties** box, and click **Create**.
5. Give the Agent a name, assign it to a NDPS Manager (use the gray browse button marked "..."), then choose **Novell Printer Gateway**.
6. Select **NONE** as your Printer Type, select **Novell Port Handler** as the Port Handler Type and click **OK**.
7. Select **Remote (LPR on IP)** and click **Next**.
8. From the OkiLAN 6120e Configuration Sheet, get the print server's IP address and use it for the Host Address Box of the Novell Gateway Utility. Then, enter the print server's IP address. Also from the Configuration sheet, get the output port of the print server. Then, enter the output port as the Printer Name. Click **Finish**.
9. If the "Loading Printer Agent" screen stays on for more than a minute, click "**Stop Waiting**."
10. Ignore the error message, "The Printer Agent Just Created Needs Attention."
11. Choose the printer drivers and click **Continue**.

Setting Up the OkiLAN 6120e for Public Access Printers At the File Server Console

1. Create NDPS Manager in NWAdmin32.
2. Load the NDPS Manager on the file server.
3. Select **Insert New Printer Agent**.
4. Give the Agent a Name.
5. Go to **Configuration Utilities**.
6. Select **Novell Printer Gateway**.
7. Select **Appropriate Printer**.
8. Select **Novell Port Handler**.
9. Select **Remote Printer: LPR/TCPIP**.
10. From the OkiLAN 6120e Configuration Sheet, get the print server's IP address. Click <Enter> at IP Host, then enter IP address of print server.
11. The LPR Printer Name is the output port of the print server.
12. Click **Accept** and **Exit**, then use Escape key to save.

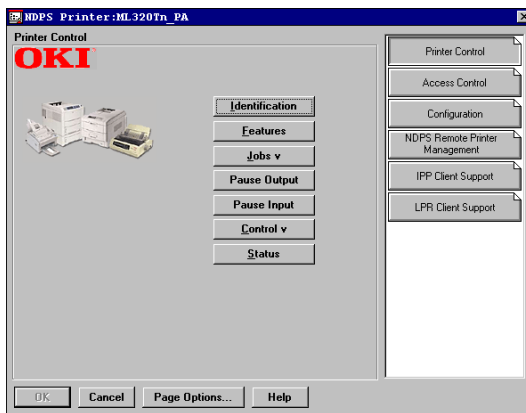
Setting Up the OkiLAN 6120e in NetWare 5.1x or Higher in TCP/IP

There is an accelerated procedure for setting up the OkiLAN 6120e in NetWare 5.1x or higher in TCP/IP that is similar to the procedure for NetWare 4.x and 5.x above. However, for this procedure, OKI provides two snapins: an IP Address Configuration Wizard and a dedicated NDPS Printer Control Snapin for the OkiLAN 6120e.

Note: Before starting this procedure, you should add the OKI printer driver using the NDPS broker. See *Adding the OKI Printer Driver Using the NDPS Broker* above.

NDPS Printer Control Snapin

The OKI Printer Control Snapin may be used within the Novell Generic Gateway, providing easy access to set up and configure various OKI printer features.



The buttons on the OKI Printer Control screen provide the following functions:

- **Identification** — gives you access to the location and description of the printer.
- **Features** — displays specific features of the printer, including advanced properties.
- **Jobs v** — displays the list of current printer jobs.
- **Resume Output** — resumes printer output.
- **Pause Output** — pauses printer output.
- **Resume Input** — resumes printer input.
- **Control v** — gives you basic printer controls, including printer reset, form feed and setting for various print media.
- **Status** — displays the current status of the printer (as reported by the printer agent).

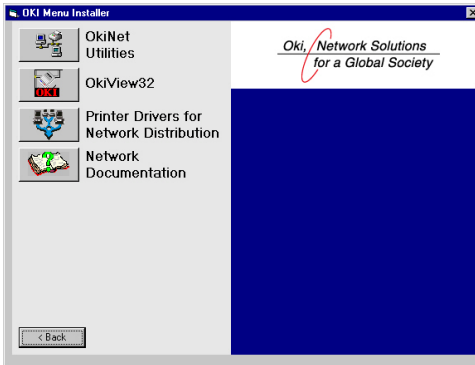
Loading the NDPS Printer Control Snapin in NetWare 5.x

To use the NDPS Printer Control Snapin for NetWare 5.x, copy the snapin from the Novell_Snapin directory of the printer's CD-ROM to the location of NetWare Administrator.

OKI DATA OkiLAN 6000 Series – IP Address Configuration Wizard

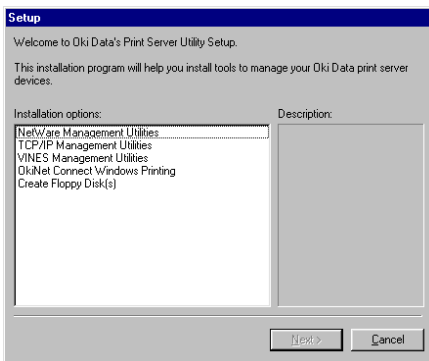
Loading the IP Address Configuration Wizard

1. To load the IP Address Configuration Wizard, press **OkiNet Utilities** in the printer CD-ROM network install screen.

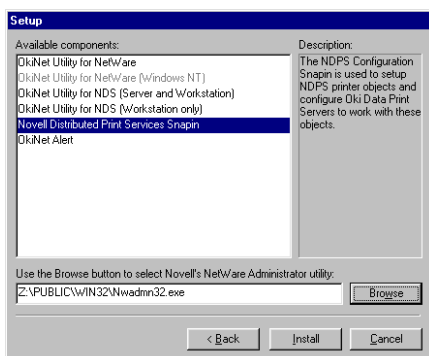


The OkiNet Utilities menu screen appears.

2. Select **NetWare Management Utilities**. Click **OK**.



3. Select **Novell Distributed Print Services Snapin** and browse to the directory of NetWare Administrator. Click **Install**.

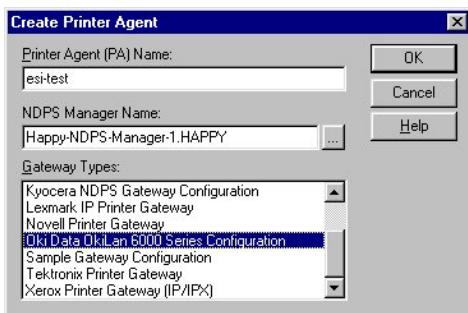


Setting Up the OkiLAN 6120e for Public Access Printers

Once the NDPS Printer Control Snapin and the OkiLAN 6000 Series IP Address Configuration Wizard are loaded into your server, the setup procedure is as follows.

Note: Before starting this procedure, get the print server's IP address from the OkiLAN 6120e Configuration Sheet.

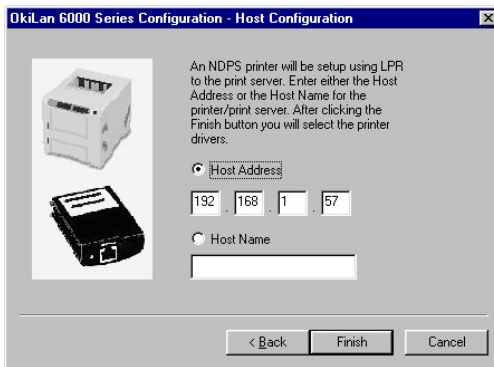
1. Create NDPS Manager.
2. Double click **NDPS Manager**.
3. Go to Printer Agent List
4. Click **New**. Enter a name for the Agent.
5. Select **OkiData OkiLan 6000 Series Configuration** as the Gateway type.



6. Click **OK**. The following screen appears:

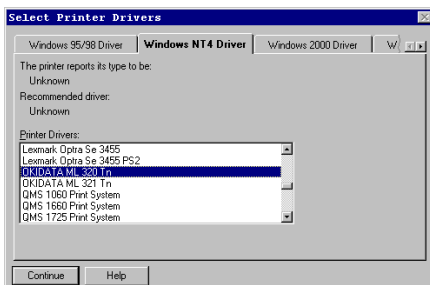


7. Click **Next**.



8. Enter the printer's IP address as shown on the OkiLAN 6120e Configuration Sheet and click **Finish**.
9. If the "Waiting for Printer Agent to Load" screen stays on for more than 60 seconds, click "**Stop Waiting.**"
10. Ignore the error message, "The Printer Agent Just Created Needs Attention."

11. The Select Printer Driver screen appears. Choose your operating system and select **OKIDATA ML 320 Tn**.



12. Click **Continue**. A screen displaying the drivers that you have selected appears.
13. Click **OK**.

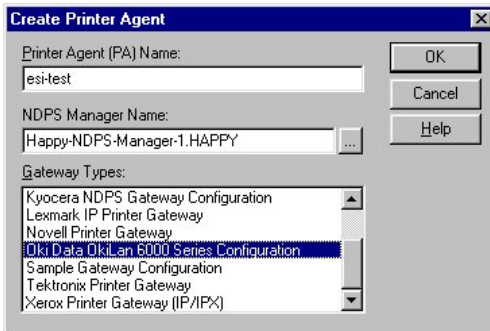
Setting Up the OkiLAN 6120e for Private Access Printers

Once the NDPS Printer Control Snapin and the OkiLAN 6000 Series IP Address Configuration Wizard are loaded into your server, the setup procedure is as follows.

Note: Before starting this procedure, get the print server's IP address from the OkiLAN 6120e Configuration Sheet.

1. Create NDPS Manager in NetWare Administrator.
2. Go to the Context in which the Private Printer is to reside.
3. Select **Create**. The New Object screen appears.
4. Click **NDPS Printer**, then click **OK**. Click the **Define Additional Properties** box, and click **Create**.
5. Give the Agent a name, assign it to a NDPS Manager (use the gray browse button marked "...").

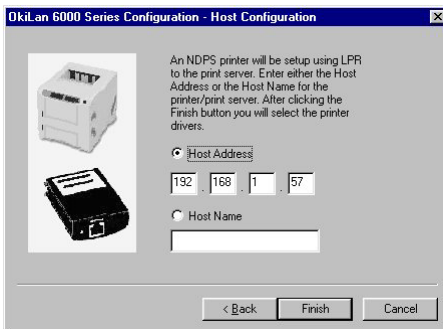
6. Select **OkiData OkiLan 6000 Series Configuration** as the Gateway type.



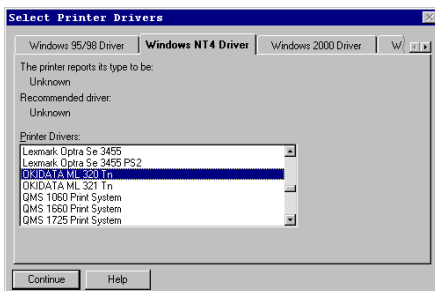
7. Click **OK**. The following screen appears:



8. Click **Next**.



9. Enter the printer's IP address as shown on the OkiLAN 6120e Configuration Sheet and click **Finish**.
10. If the "Waiting for Printer Agent to Load" screen stays on for more than 60 seconds, click "**Stop Waiting**."
11. Ignore the error message, "The Printer Agent Just Created Needs Attention."
12. The Select Printer Driver screen appears. Choose your operating system and select **OKIDATA ML 320 Tn**.



13. Click **Continue**. A screen displaying the drivers that you have selected appears.
14. Click **OK**. The NDPS Printer Control screen appears.

Section IV:

TCP/IP

In This Section

Chapter 1 Introduction IV-5

Overview	IV-5
Software Requirements	IV-5
Network Preparation	IV-6
Before You Start	IV-6
Overview of TCP/IP Configuration	IV-6

Chapter 2 Configuring the OkiLAN 6120e IV-7

Choosing an IP Address	IV-7
Configuring the OkiLAN 6120e	IV-8
Assigning the IP Address	IV-8
Other Utilities	IV-12
Verifying Access to the OkiLAN 6120e	IV-13

Chapter 3 TCP/IP Configuration and Printing... IV-14

Overview	IV-14
Configuring for TCP/IP Network Printing	IV-15
Remote Print Queue Name	IV-15
Configuring a BSD-Style Print Queue	IV-17
Remote LPD Printing	IV-18
FTP Printing	IV-19
Timeout Checking	IV-21
Raw Port Printing	IV-22

Chapter 4 OkiNet for TCP/IP IV-23

Overview	IV-23
System Requirements	IV-23
Running OkiNet for TCP/IP	IV-24
Configuring the OkiLAN 6120e Using OkiNet for TCP/IP	IV-24
Configuring TCP/IP Options	IV-25
EtherTalk Configuration Options	IV-28
Output Port Configuration Options	IV-28
SNMP Configuration Options	IV-30
Enabling/Disabling Protocols	IV-32
SNMP Trap Configuration	IV-32

Saving the Configuration	IV-34
Displaying OkiLAN 6120e Diagnostic Information	IV-34
Printing a Configuration Sheet	IV-34
Resetting the OkiLAN 6120e	IV-34
Restoring Factory Default Settings	IV-35
Creating Customized Views	IV-36
Modifying View Settings	IV-37
Permanently Defining SNMP Access Information	IV-39
Configuring the Discovery UDP Port Number	IV-41
Starting a Telnet Session	IV-41
Starting the BOOTP Server	IV-41
Chapter 5 Web Configuration	IV-42
Chapter 6 Telnet Configuration	IV-43
Overview	IV-43
Running a Telnet Session	IV-43
Appendix A Troubleshooting	IV-49
Main Status Indicator	IV-49
Restoring the OkiLAN 6120e to Factory Defaults	IV-49
Unable to Assign IP Address	IV-50
Hardware Error Messages	IV-53
Printing a Configuration Page	IV-54
Unable to Print	IV-54
Appendix B Application Considerations	IV-56
Overview	IV-56
Assigning the OkiLAN 6120e IP Address with BOOTP	IV-57
Configuring the OkiLAN 6120e IP Address with RARP	IV-60
Configuring HP-UX v8.07 for Printing with the OkiLAN 6120e	IV-63
Configuring HP-UX v9.xx for Printing with the OkiLAN 6120e	IV-66
Configuring HP-UX v10.xx for Printing with the OkiLAN 6120e	IV-69

Configuring SCO UNIX for Printing	
with the OkiLAN 6120e	IV-73
IBM's AIX ver. 3.x for Printing	
with the OkiLAN 6120e	IV-75
Configuring Solaris 2.x for Printing	
with the OkiLAN 6120e	IV-77
Configuring Sun-OS v4.1.x or Ultrix v4.2 for Printing	
with the OkiLAN 6120e	IV-79
Appendix C Internet Printing Protocol (IPP)	IV-81

Chapter 1

Introduction

Overview

This section contains instructions and information on how to configure your OkiLAN 6120e. You will also be instructed on how to set up your host computers to print to the OkiLAN 6120e using the TCP/IP protocol.

OkiLAN 6120e supports TCP/IP methods for printing:

- Remote Line Printer Daemon (LPD)
- File Transfer Protocol (FTP)
- Printing directly through a TCP port (Raw Port Printing)

Additionally, if the DHCP protocol is enabled as a default, the print server may be accessed through an ordinary Internet Web browser, such as Netscape Navigator, or by using TELNET. See Chapters 5 and 6 in this section.

Software Requirements

The OkiLAN 6120e may be configured for TCP/IP using the OkiNet for TCP/IP utility, or from a computer supporting the OkiNet for NetWare utility, Banyan VINES OkiNet for VINES utility (may apply to other OkiLAN print server models), OR telnet and one of the following:

- Manual *arp* table entry and *ping*
- Static route entry using *route add* command
- DHCP
- RARP
- BOOTP

Network Preparation

- You should be familiar with network administration as well as the physical setup and operation of your network.
- Advise users of possible disruption during installation.
- Make sure the serial number and Ethernet address of your OkiLAN 6120e are available.
- Assign an IP address and a hostname (alias) to the OkiLAN 6120e.
Use the network name service or the “/etc/hosts” file to add the OkiLAN 6120e to the network.

Before You Start

Before running OkiNet for TCP/IP, you must do the following:

- Install the OkiLAN 6120e hardware and connect the cabling (if necessary). Instructions for hardware installation are found in Section I of this manual.
- Write down the serial number and Ethernet address of your OkiLAN 6120e. (These numbers are located on the OkiLAN 6120e unit.)
- Install OkiNet for TCP/IP-see Section I.

Overview of TCP/IP Configuration

- Assign an IP address for the OkiLAN 6120e
- Configure the OkiLAN 6120e network information
- Configure hosts for printing to the OkiLAN 6120e
- Test print (optional)

Chapter 2

Configuring the OkiLAN 6120e

Choosing an IP Address

Every TCP/IP network device is required to have a unique IP address. The IP address can be **permanently** stored using one of the following:

- OKI OkiNet management utilities for TCP/IP, Novell NetWare or Banyan VINES (may apply to other OkiLAN print server models)
- OkiLAN 6120e Configuration utility via telnet.

Note: The OkiNet utilities are the easiest way to assign an IP address.

Using factory default settings, the OkiLAN 6120e first attempts to determine its IP address (flashing rapid green) using DHCP, RARP, BOOTP or Gleaning. If the OkiLAN 6120e has not resolved its IP address after 2 minutes, it defaults to 198.102.102.254. (This IP address should be used only temporarily for configuration purposes.)

To choose an IP address:

1. Select an IP address and hostname for the OkiLAN 6120e.

Example: 192.168.42.50 OkiLAN_6120e_name

2. Add the name and IP address to the “/etc/hosts” file of each host that will access the OkiLAN 6120e. Or, if your network uses a name service, add the host name and IP address to the name server.

Most TCP/IP networks use the Network Information Service (NIS), Domain Name Service (DNS) or the “/etc/hosts” database. See your network documentation for instructions.

Configuring the OkiLAN 6120e

There are four utilities available to configure the OkiLAN 6120e for TCP/IP printing. You may use whichever utility is best suited for your needs.

- **OkiNet for TCP/IP** - Windows TCP/IP print manager utility. See Chapter 3 of this section for more information.
- **OkiLAN 6120e Configuration Utility** - This utility is accessed via *telnet*. See Chapter 6 of this section for more information.

In order to configure the OkiLAN 6120e via *telnet*, you must first assign an IP address to the OkiLAN 6120e **and** verify communication by *pinging* the device.

- **OkiNet for NetWare** - This windows utility must be run from a Novell NetWare client. See Section III of this manual for specific information.
- **OkiNet for VINES (VPMAN) Utility** - This Windows utility must be run from a Banyan VINES client (may apply to other OkiLAN print server models).

Assigning the IP Address

There are eight different methods for assigning an IP address to the OkiLAN 6120e: Gleaning, Static Route Entry, DHCP, RARP, BOOTP and using the OkiNet or OkiNet for VINES utilities. Gleaning, Static Route Entry and RARP require the OkiLAN 6120e and the host to be on the same subnet. DHCP and BOOTP also have this restriction unless the network routers are configured to pass these requests. The OkiNet and OkiNet for VINES utilities (may apply to other OkiLAN print server models) do not have this restriction.

Gleaning

If an IP address has not been permanently assigned when the OkiLAN 6120e is powered on or reset, it will look for a *ping* packet on the network. If the OkiLAN 6120e receives a *ping* packet within two minutes, it will accept the IP address in the *ping* packet as its own address.

To use Gleaning, you must have Windows 95/98, Windows NT/2000, or super-user privileges on a UNIX system.

1. Add an entry in the ARP table that assigns an IP address to the hardware address of the OkiLAN 6120e. To do this, use the *arp* command.

```
arp -s <ip_address><hardware_address> temp
```

UNIX Example:

```
arp -s 192.168.42.24 00:02:16:00:00:01 temp
```

Windows 95/98, Windows NT/2000 Example:

```
arp -s 192.168.42.24 00-02-16-00-00-01
```

2. Start a continuous ping to the OkiLAN 6120e.

```
ping <ip_address>
```

Example: ping 192.168.42.24

On some systems, this may require an additional parameter. Some implementations of *ping* only send out one *ping* packet which could get lost in transit. Check your system documentation for more information.

3. Connect power to the OkiLAN 6120e.

The OkiLAN 6120e will glean its IP address from the ping packet. This IP address will remain in effect until the OkiLAN 6120e is powered off or reset.

Therefore, a permanent IP address should be assigned by running the OkiNet for TCP/IP utility or via *telnet*.

Note: Gleaning does not work with Windows NT Workstation 3.5.

DHCP

The Dynamic Host Configuration Protocol (DHCP) provides a framework for passing configuration information to hosts on a TCP/IP network in a client/server fashion. DHCP is based on the Bootstrap Protocol (BOOTP), adding the capability of automatic allocation of reusable network addresses and additional configuration options. DHCP uses the same packet structure as BOOTP so current BOOTP relay agents will also interact with DHCP messages.

DHCP offers dynamic IP address allocation. When a client receives an IP address, it also receives a *lease* (an amount of time the host may use the address). The lease times vary from 1 hour to 100 years, or may be infinite. When the lease expires, the host must stop using the address. DHCP may also be used like BOOTP, with a certain IP address always assigned to a certain device. Depending on the server, both methods may be used at the same time.

If the OkiLAN 6120e does not find a DHCP server after two minutes, it will timeout and assume a default address of 198.102.102.254. This follows current BOOTP and RARP behavior.

If the OkiLAN 6120e receives multiple responses, it will choose the first one.

When the OkiLAN 6120e receives an address, it sends an ARP message once every second for five seconds on the offered address to determine if another device is using it. If the OkiLAN 6120e finds another device is using the address, it will refuse the address and start looking for a new address.

Static Route Entry

When the OkiLAN 6120e is powered on or reset and no permanent IP address has been assigned, it will attempt to obtain an IP address through Gleaning, RARP, BOOTP or DHCP. If the OkiLAN 6120e has not determined its IP address after two minutes, the IP address will default to 198.102.102.254. This IP address should only be used temporarily to configure a new, permanent IP address. To change to a permanent IP address, the *route add* command is used to place the OkiLAN 6120e product's default IP address into the workstation's network routing table. To use the *route* command, you must have Windows 95/98, Windows NT/2000 or super-user privileges under UNIX. The syntax for this command is:

route add 198.102.102.254 "IP address of the workstation" 0

Note: The zero (0) placed at the end of the *route add* command shown above is optional.

The Static Route method only works if the host from which you are telneting is on the same subnet as the OkiLAN 6120e. Once the *route add* command has been issued, *telnet* will allow you to change and/or make the IP address permanent. After changing the IP address to its permanent address, the routing table entry should be deleted using *route delete*.

For more information, consult your system documentation for the *route* command.

RARP or BOOTP

If an IP address has not been permanently assigned, the OkiLAN 6120e will use Reverse Address Resolution Protocol (RARP) or Bootstrap Protocol (BOOTP). The OkiLAN 6120e will broadcast requests for its IP address to both RARP and BOOTP servers. A RARP or BOOTP server will respond by searching a configuration file that maps the Ethernet hardware addresses of devices on the network to their respective IP addresses. If a match is found, the server's response will include the IP address of the device.

Most UNIX operating systems support either the RARP or BOOTP protocol. To find out which protocol your operating system supports, request the manual page for the protocol's daemon (e.g. *man bootpd* or *man rarpd*), or see your network manuals. Both protocols require that you add the product's network hardware address and IP address to a configuration file. See your network documentation for instructions or refer to *Appendix B, Application Considerations*.

Note: An IP address received from a RARP or BOOTP server is not permanently programmed into the OkiLAN 6120e. Therefore, if you choose this method of assigning the IP address, the RARP or BOOTP server must be available every time the OkiLAN 6120e is powered on or reset. The IP address can be stored permanently using *telnet*, OkiNet for TCP/IP, OkiNet for NetWare or the OkiNet for VINES utility (may apply to other OkiLAN print server models).

A Winsock compliant BOOTP server is located on the OkiNet for TCP/IP diskette. This has been provided for users who do not have UNIX machines.

Other Utilities

The IP address can also be set from Novell NetWare using the OkiNet for NetWare utility or through the Banyan VINES OkiNet for VINES utility (may apply to other OkiLAN print server models).

Note: The OkiNet for NetWare and OkiNet for VINES utilities can only be used if Novell NetWare or Banyan VINES are installed on your network respectively (may apply to other OkiLAN print server models).

Verifying Access to the OkiLAN 6120e

Use the *ping* utility to verify access to the OkiLAN 6120e.

`ping <IP address of OkiLAN 6120e>`

If the OkiLAN 6120e does not respond, your network or the device is not configured correctly.

- Verify the IP address, default gateway and subnet mask are set to the proper values on the OkiLAN 6120e by printing a configuration sheet. This can be done using either the print configuration sheet button, through the OkiNet or OkiNet for VINES utilities (may apply to other OkiLAN print server models) or via *telnet*.
- If the settings appear to be correct, try repeating the installation steps. If problems persist, call Oki Data Customer Support at 1-800-OKI-DATA (1-800-654-3282).

Chapter 3

TCP/IP Configuration and Printing

Overview

The OkiLAN 6120e supports printing from computers using TCP/IP and any of the following printing protocols:

- Line Printer Redirect/Line Printer Daemon (lpr/lpd)
- File Transfer Protocol (FTP)
- Printing directly through a TCP port (Raw Port Printing)

This chapter presents basic instructions on how to configure your computer to print using Remote LPD and FTP. Specific instructions for several popular computer systems have been documented in Appendix B, *Application Considerations*. If your specific system is not addressed in this appendix, follow the instructions outlined below. You should also refer to your operating system or computer manual for information about configuring remote network printing. If you are still unable to configure your computer system to print to the OkiLAN 6120e, contact Oki Data Customer Support at 1-800-OKI-DATA (1-800-654-3282).

Configuring for TCP/IP Network Printing

Most computers that support TCP/IP network printing use the Remote Line Printer Daemon (LPD) protocol. This protocol was originally part of the Berkeley Software Distribution (BSD) version of the UNIX operating system. Remote LPD was quickly adopted as a de facto standard. As a result, Remote LPD is now supported by most versions of the UNIX operating system and by many TCP/IP packages available for other operating systems. Configuration of Remote LPD printing varies among vendors who supply TCP/IP.

You may also use the File Transfer Protocol (FTP) for printing. Typically FTP is used to transfer files between computers on a TCP/IP network. The OkiLAN 6120e simply prints the files it receives from FTP.

Remote Print Queue Name

The Remote Print Queue Name determines which printer port will service the print job. The Remote Print Queue Name may also be used to specify ASCII print jobs. Both Remote LPD and FTP have provisions for specifying a Remote Print Queue Name.

The OkiLAN 6120e looks at the last character of the Remote Print Queue Name to determine which printer port will service the print job. All Remote Print Queue Names should end with the number 1, 2, 3 or 4. If a number is not specified, the OkiLAN 6120e will use printer port 1.

The OkiLAN 6120e is designed to handle many different types of printers and print data. Typically you will select the printer type for your printer in telnet under the *Configure Port* option. However, if you are connecting to an ASCII printer, you may wish to use the OkiLAN 6120e to format the print data for your printer.

The OkiLAN 6120e will parse the remote queue name and search for certain characters at the end which tell how to convert an ASCII print job. The print server uses FF, LF and NF as ASCII conversion specifiers and uses the last number as an output port. The FF, LF and NF specifiers must be the last letters in the queue name.

Example: LaserWriterFF, SalesColorLaserNF, ChemDeptLF2

FF Use the FF suffix at the end of the Remote Print Queue Name, before the port number.

Example: queueFF2

If the last character in the print job is not a form feed, the OkiLAN 6120e appends a form feed. This form feed prompts the printer to print any partial page at the end of the job.

LF Use the LF suffix at the end of the Remote Print Queue Name, before the port number.

Example: queueLF2

In addition to the form feed described above, the OkiLAN 6120e inserts a carriage-return character into the print job immediately before each line-feed character. This feature is useful for printing UNIX text files.

NF Use the NF suffix at the end of the Remote Print Queue Name, before the port number.

Example: queueNF2

The OkiLAN 6120e inserts a carriage-return character into the print job immediately before each line-feed character. This feature is useful for printing UNIX text files.

This option differs from LF in that form feed is not added to the end of jobs.

Configuring a BSD-Style Print Queue

For remote BSD-Style LPD printing, add the OkiLAN 6120e as a remote printer in the “/etc/printcap” database to each host printing to the OkiLAN 6120e.

You can add PRINTCAP options as needed. If you are unfamiliar with PRINTCAP, consult your local documentation.

The entry should be similar to the following:

```
local_print_queue_name/[printer_model_and_
manufacturer]:\.:lp=:mx#0:rm=OkiLAN
6120e_name:\.:rp=remote_print_queue_name:\
.:sd=path_to_spool_directory:lf=just
log_file_name
```

local_print_queue_name

The `local_print_queue_name` defines the name of the printcap entry. It is used by the `lpr/lpd` utilities to specify which printcap entry is being referenced. Additional printcap entries can be added as needed for different queue types. Each entry must have a unique `local_print_queue_name` and a different spool directory to work properly. When you are ready to print, use the `local_print_queue_name` that matches the data type of the file to be printed.

OkiLAN 6120e_name

This is the name (alias) of the OkiLAN 6120e. This must be the same name as entered in the `/etc/hosts` file or your NIS or DNS system. An IP address may also be used here.

remote_print_queue_name

The `remote_print_queue_name` entry determines the OkiLAN 6120e port where the print job will be printed and optionally specifies ASCII printing.

path_to_spool_directory

This is the path to a directory where the print jobs will be spooled for this queue. You must create a unique spool directory for each printcap entry.

log_file_name

This is the path to a file where error information from the lpd will be logged.

Example: If you are printing to an ASCII printer that requires a carriage return/line feed, you may need two separate printcap entries: one entry for print jobs which terminate lines with a carriage return/line feed, and another entry for print jobs which terminate lines with a line feed only. Your printcap entries might look like the following:

```
ascii_files/form.feed.Queue_on_Port_2:\
:lp=:mx#0:rm=pserver1:rp=MYQUEUEFF2:\
:sd=/usr/spool/myqueueff2:\
:lf=/usr/spool/myqueueff2/queue.log

asciilf_files/line.feed.Queue_on_Port_2:\
:lp=:mx#0:rm=pserver1:rp=MYQUEUELF2:\
:sd=/usr/spool/myqueueelf2:\
:lf=/usr/spool/myqueueelf2/queue.log
```

Note: Each printcap entry must have a different spool directory to work properly.

Remote LPD Printing

The way print jobs are queued to a Remote LPD system varies among the vendors that support TCP/IP. UNIX systems that are BSD-based typically use the *lpr* program to submit print jobs. Other UNIX systems may use the *lp* program to submit print jobs. PC-based TCP/IP packages often provide a command line *lpr* program and a utility to redirect the output of an LPT port to a Remote LPD system.

Consult your system administrator or software vendor for assistance troubleshooting LPD.

Note: The Remote LPD implementation of the OkiLAN 6120e does not support any UNIX LPD input or output filters or the direct printing of banner pages. It is possible to configure some UNIX systems so that banner pages and input and output filters will be generated at the UNIX host and then sent to the OkiLAN 6120e. (Refer to Appendix B, *Application Considerations*.)

FTP Printing

FTP is a command line program used to transfer files between computers. FTP provides commands for opening a connection to another computer, specifying the data type of any transfers, and sending and receiving files. The OkiLAN 6120e supports a subset of the FTP command set. This subset allows the FTP user to open a connection to the OkiLAN 6120e, specify a file transfer data type and send print files to a Remote Print Queue Name on the OkiLAN 6120e.

The OkiLAN 6120e recognizes the following FTP commands:

- | | |
|-------------|---|
| PUT | Print a single file
The <i>PUT</i> command sends the file to the OkiLAN 6120e. The first parameter of the <i>PUT</i> command is the name of the local file to <i>PUT</i> . The second parameter of the <i>PUT</i> command is the name of the file for the remote PC. In order to print the file, this second parameter must be a Remote Print Queue Name . If you do not specify the second parameter, FTP sets the remote file name to the local file name. This may produce undesirable printing results. |
| SEND | Treated the same as <i>PUT</i> . |
| MPUT | Print multiple files. |

TYPE	Changes the representation type used for data transfer. Image (or binary) and ASCII are the only types supported.
ASCII	Equivalent to “TYPE ASCII.”
BINARY	Equivalent to “TYPE BINARY.”
IMAGE	Equivalent to “TYPE IMAGE.”
STRU	Specifies file structure. File is the only structure supported.
MODE	Specifies transfer mode. Stream is the only transfer mode supported.
OPEN	Opens connection to remote host.
CLOSE	Terminates FTP session.
QUIT	Terminates FTP session and exits FTP.
BYE	Equivalent to <i>QUIT</i> .

With the exception of the OkiLAN 6120e 100 series, OkiLAN 6120e print servers will allow one FTP connection. If more FTP connections are attempted, the OkiLAN 6120e will reject the connection until one of the other FTP connections is closed. When an FTP connection is rejected, the FTP program will typically display a message like the following:

```
$ ftp<CR>
ftp> open OkiLAN 6120e_name<CR>
connection refused
ftp>
```

Note: Specifying binary mode is important for all jobs. Most FTP implementations default to ASCII mode. This may cause unexpected or undesired printing results.

Example: The following example prints a PostScript file called chart.ps to the OkiLAN 6120e printer Port 1 using FTP.

```
$ ftp OkiLAN 6120e_name<Enter>
Connected to OkiLAN 6120e_name.
220 ESI-2810 Version 3.0 ready.
Name (OkiLAN 6120e_name:anyone):<Enter>
230 User logged in.
ftp> binary<Enter>
200 Type set to I.
ftp> put chart.ps MPX1<Enter>
local: chart.ps remote: MPX1
200 PORT command successful.
150 Opening BINARY mode data connection for
MPX1.
226 Transfer complete.
4549 bytes sent in 0 seconds (4.4 Kbytes/s)
ftp> bye<Enter>
221 Goodbye.<Enter>
$
```

Timeout Checking

If timeout checking is enabled on the OkiLAN 6120e, the OkiLAN 6120e will close any connection that stays idle for more than five minutes. For example, if you open an FTP connection to the OkiLAN 6120e and walk away from your computer for more than five minutes, the FTP connection will be closed. You can reestablish a connection to the OkiLAN 6120e with the OPEN command.

Raw Port Printing

Host computer software can use a *raw* TCP/IP port connection to send data to the OkiLAN 6120e. A TCP/IP port has been assigned to the output port of the OkiLAN 6120e as follows:

TCP/IP Port: 9100

Output Port: 1

Consult your system documentation for information on how to submit print jobs to a raw port.

Chapter 4

OkiNet for TCP/IP

Overview

This section contains information about OkiNet for TCP/IP. OkiNet for TCP/IP provides SNMP-based support for the entire OkiLAN 6120e family of print servers.

OkiNet for TCP/IP allows you to:

- Easily assign an IP address
- Configure an OkiLAN 6120e for all Supported Protocols
- Display OkiLAN 6120e Diagnostic Information
- Print a Configuration Sheet
- Reset the OkiLAN 6120e
- Restore Factory Default Settings
- Creating Customized Views
- Modify View Settings
- Permanently Define SNMP Access Information

System Requirements

OkiNet for TCP/IP is a Windows-based program which is compatible with Windows 3.x, Windows NT/2000 and Windows95/98.

OkiNet for TCP/IP requires that the TCP/IP protocol is running using a Winsock (Windows Sockets) TCP/IP stack, version 1.1 or greater. A Winsock TCP/IP protocol stack is available from many vendors including the following:

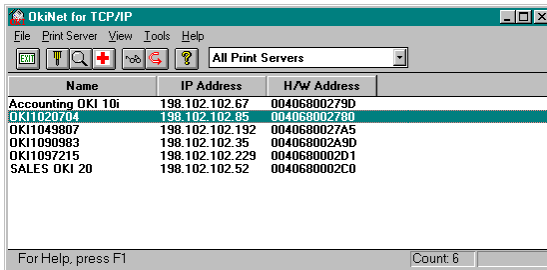
- Microsoft
- FTP Software
- Trumpet
- NetManage
- Distinct

For more information on the Winsock TCP/IP stack and setting up a host name, see the README file.

Running OkiNet for TCP/IP

To run the utility, double-click on the OkiNet icon. The main *OkiNet for TCP/IP* screen will display.

By default, the *All Print Servers* view is selected and all print servers attached to the subnet of the network from which the OkiNet utility is running are listed.



Configuring the OkiLAN 6120e Using OkiNet for TCP/IP

The following steps outline how to configure an OkiLAN 6120e. To change settings of a previously configured OkiLAN 6120e, follow the same procedure but skip Step 3, as no prompt will appear.

1. Select the OkiLAN 6120e you wish to configure.
2. Select **Configuration** from the *Print Server* menu or select the **Configuration** icon on the toolbar.
3. When prompted, enter the IP Address of the OkiLAN 6120e.
4. Set the appropriate configuration by choosing the applicable file folder tabs.

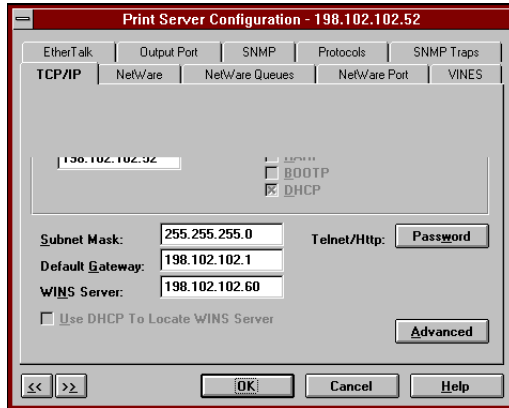
The following settings are configurable:

- TCP/IP
- NetWare
- NetWare Port
- NetWare Queues
- VINES*
- EtherTalk
- Output Port
- SNMP
- Protocols
- SNMP Traps

* May apply to other OkiLAN print server models.

Configuring TCP/IP Options

To configure options specific to the TCP/IP protocol, select the TCP/IP tab. The following screen will display:



Fill in the following information:

IP Address Resolution

- **Set Permanent** - Select this option to make the IP address permanent. If the OkiLAN 6120e has been configured to remember its IP address, it does not need to determine its address each time it is powered on.

Enter the IP address for the OkiLAN 6120e. The IP address must follow the format XXX.XXX.XXX.XXX, where each XXX is a number from 0 to 255.

CAUTION: If you select an invalid IP address, you may not be able to access the OkiLAN 6120e.

- **Use Network Protocol** - Select this option to use RARP, BOOTP or DHCP to determine the IP address at power up. Specify which protocol(s) to use.

Subnet Mask

If your network environment includes subnets, you will want to set the subnet mask. The subnet mask must follow the format XXX.XXX.XXX.XXX, where each XXX is a number from 0 to 255.

The default subnet mask is 0.0.0.0. The OkiLAN 6120e interprets a subnet mask of 0.0.0.0 or 255.255.255.255 as no subnet mask specified.

CAUTION: If you select an invalid subnet mask, you may not be able to access the OkiLAN 6120e.

Default Gateway

If your local network is attached to other networks, you can specify the address of your default gateway. This gateway will be selected whenever messages need to be sent to another network.

The gateway address must follow the format XXX.XXX.XXX.XXX, where each XXX is a number from 0 to 255.

CAUTION: If you select an invalid default gateway or the default gateway becomes unavailable, the OkiLAN 6120e may not be able to communicate with non-local networks.

WINS Server

If you are using WINS name resolution, set the address of the WINS Server where the System Name of the OkiLAN 6120e will be registered.

Use DHCP to Locate WINS Server

If you are using DHCP for IP address resolution, select this option to obtain the address of the WINS Server from the DHCP Server.

Telnet/HTTP Password:

Allows you to modify the current password required for *Telnet* or HTTP access. The default password is the serial number of the OkiLAN 6020e.

NetWare and NetWare Port Configuration Options

For specific information on NetWare or NetWare Port options, see Section III, *Novell NetWare*, or select the **HELP** button on the bottom right of the screen.

NetWare Queues Configuration Options

The NetWare Queues option allows you to add bindery print queues to be serviced by first selecting each desired queue and then selecting the -> button.

To have a queue print to a specific output port, select the **Output Port** button and then select the desired port.

NetWare Queue Load Balancing

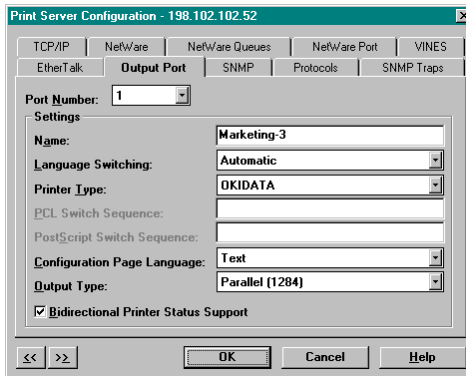
Print jobs can be distributed to multiple printers on selected queues by selecting the same queue multiple times and selecting a different output port for each queue entry.

EtherTalk Configuration Options

To modify the configuration settings specific to the EtherTalk protocol such as the name and zone. For specific information on EtherTalk options, see Section VI, *EtherTalk*, or select the **HELP** button on the bottom right of the screen.

Output Port Configuration Options

To configure the OkiLAN 6120e output port, select the **Output Port** file tab. The following screen will display:



Port Number

Select the port number you wish to configure.

Name Field

Enter a descriptive name to identify the port.

Language Switching

Each output port can be configured to perform the following language switching options: OFF, PCL, PostScript or Automatic. Unless OFF is selected, a language switching character string will be inserted before each print job. The Printer Type selection is used to determine the actual characters required to switch your printer's language.

- **OFF** - Print data stream will be sent directly to the output port without alteration.
 - **PCL** - Inserts the appropriate character string in front of each print job to switch the printer to the PCL print language.
 - **PostScript** - Inserts the appropriate character string in front of each print job to switch the printer to the PostScript printer language.
 - **Automatic** - Enables the auto language sensing function. This function examines the print job data stream and determines the required print language and inserts the appropriate character string in front of each print job to switch the printer to the appropriate printer language.
-

Note: If you are not switching languages or the printer can switch automatically, this option should be set to OFF.

Printer Type

The Printer Type selection is used to determine the actual character string required for your printer. If your printer type is not listed, select **Other** and enter the character string for switching the printer to PCL or PostScript mode.

To enter nonprintable characters, enclose the ASCII value of the character in angle brackets. For example, to enter the ESC character type: <27>.

PCL Switch Sequence

Enter the character string to switch the printer to the PCL print language.

PostScript Switch Sequence

Enter the character string to switch the printer to the PostScript print language.

Configuration Page Language

Select the appropriate printer language for printing configuration pages on your printer.

Output Type

Select the appropriate baud rate.

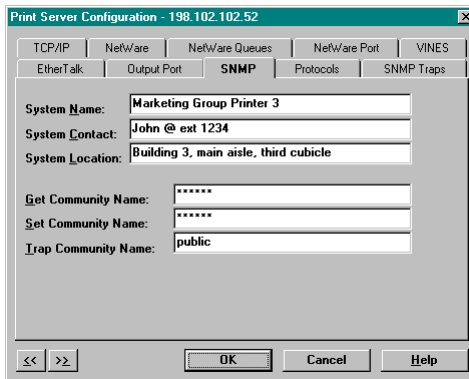
Bidirectional Printer Status Support

Enable this option for enhanced status from the bidirectional printer.

SNMP Configuration Options

SNMP options specify which information is necessary for an SNMP manager to access the OkiLAN 6120e. The system variables are for user convenience and are optional.

To configure SNMP specific information, select the SNMP tab. The following screen will display:



The screenshot shows a dialog box titled "Print Server Configuration - 198.102.102.52". It has several tabs: TCP/IP, NetWare, NetWare Queues, NetWare Port, VINES, EtherTalk, Output Port, **SNMP**, Protocols, and SNMP Traps. The SNMP tab is selected. The dialog contains the following fields:

- System Name: Marketing Group Printer 3
- System Contact: John @ ext 1234
- System Location: Building 3, main aisle, third cubicle
- Get Community Name: *****
- Set Community Name: *****
- Trap Community Name: public

At the bottom, there are navigation buttons: <<, >>, OK, Cancel, and Help.

Note: SNMP options need to be configured only if you are managing an OkiLAN 6120e or getting system information using SNMP.

Fill in the following information:

System Name

Enter the name of your choice. This name will identify the OkiLAN 6120e in your SNMP-based management program.

System Contact

Enter any information useful to a user if problems with the OkiLAN 6120e arise.

System Location

Enter a description of the OkiLAN 6120e location.

Get Community Name

This field is used to set the community name required to *Get* information from the print server. The default community name is *public*.

Note: For JetAdmin to function correctly with the OkiLAN 6120e, the SNMP Get and Set community name must be set to *public*.

Set Community Name

This field sets the community name required to Set information on the OkiLAN 6120e. The default community name is *public*.

Note: The OkiLAN 6120e cannot be configured without the correct *Set* community name. To secure the configuration of the OkiLAN 6120e, change the community name from the default setting.

Trap Community Name

Enter the community name which will be used when traps are sent from the OkiLAN 6120e. This setting allows trap utilities to only accept traps from devices with appropriate community names.

The trap community name field is used by the OkiNet Alert and other network monitoring utilities for grouping or filtering OkiLAN 6120e devices. OkiNet Alert assists in managing network printers by immediately alerting you of printer problems.

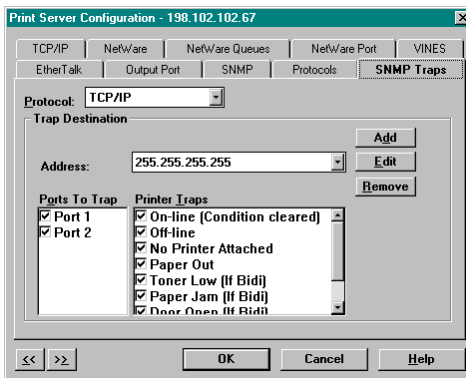
Enabling/Disabling Protocols

To enable or disable protocols on the OkiLAN 6120e, select the **Protocols** tab. Select each protocol you wish to enable. If you disable a protocol, the OkiLAN 6120e will no longer communicate using that protocol.

SNMP Trap Configuration

The SNMP Trap option allows configuration of traps. Traps are unsolicited information concerning the OkiLAN 6120e. Traps can be sent to an SNMP manager or be broadcast to all hosts on the local segment.

To configure SNMP traps, select the **SNMP Traps** tab.



Note: SNMP options need to be configured only if you are managing an OkiLAN 6120e or getting system information using SNMP.

Protocol

Select the protocol for which you wish to configure trap information.

Trap Destination

- **TCP/IP Protocol** - Enter the IP address to which traps will be sent. The IP address must follow the format XXX.XXX.XXX.XXX, where each XXX is a number from 0 to 255. To broadcast traps to all hosts on the local subnet, enter 255.255.255.255.
- **NetWare Protocol** - Enter the network number and hardware address, respectively, to which traps will be sent. To broadcast traps to all addresses on all networks, enter FFFFFFFF (8 characters) in the first field and FFFFFFFFFFFFFFFF (12 characters) in the second field. To broadcast traps to all addresses on a specific network, enter the network number in the first field and then FFFFFFFFFFFFFFFF (12 characters) in the second field.

Ports to Trap

Select the output ports on which you wish traps to be active.

Printer Traps

Select the printer traps to be activated. The following printer error conditions may cause a printer trap to occur:

- On-line
- Off-line
- No Printer Attached
- Paper Out
- Paper Jam
- Door Open
- Toner Low
- Printer Error

The toner low, door open and paper jam traps require that your printer be set to automatic emulation switching (the default) or PCL emulation.

Saving the Configuration

Once all settings have been defined, select **OK**. The settings will be saved and you will be returned to the main *OkiNet for TCP/IP* screen.

Displaying OkiLAN 6120e Diagnostic Information

To view OkiLAN 6120e diagnostic information, double click on **Diagnostics** from the *Print Server* pull-down menu on the main *OkiNet TCP/IP* screen. Diagnostic information is available on the following topics:

- Printer
- Print Server
- Protocols
- Network
- Statistics
- Technical Support
- System

Printing a Configuration Sheet

The configuration sheet provides current network, print server and printer information. To print a configuration sheet, select the OkiLAN 6120e from the list of available print servers. Select **Print Configuration Sheet** from the *Print Server* menu bar.

Resetting the OkiLAN 6120e

To reset the OkiLAN 6120e, select the OkiLAN 6120e from the list of available print servers. From the *Print Server* menu bar, select **Reset**.

CAUTION: Make sure there are no print jobs active when you reset the OkiLAN 6120e. All protocols will be restarted. If you attempt a reset while a job is printing, the job may not print successfully.

Restoring Factory Default Settings

To restore the OkiLAN 6120e to factory default settings, select the OkiLAN 6120e from the list of available print servers. From the *Print Server* menu bar, select **Reset**.

From the *Reset Print Server* screen, choose one or more of the following options:

Output Ports

Restores settings related to output ports such as port name and output type.

TCP/IP

Restores settings specific to the TCP/IP protocol configuration such as the IP address and subnet mask.

NetWare

Restores settings specific to the NetWare protocol configuration such as the mode and default file server.

Banyan VINES

Restores settings specific to the VINES protocol configuration such as user name and print service names (may apply to other OkiLAN print server models).

EtherTalk

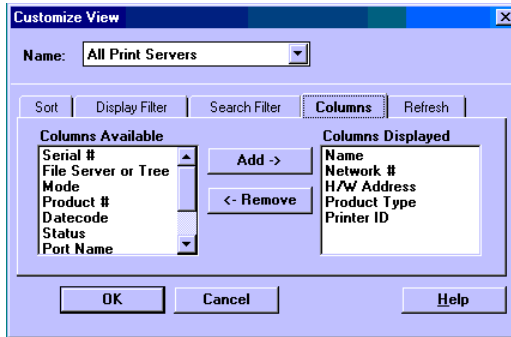
Restores settings specific to the EtherTalk protocol configuration such as the name and zone.

Once you have chosen the desired options, select **Restore**. To completely restore the print server to factory default settings, select all items in the list.

CAUTION: Make sure there are no active print jobs when you select Restore Factory Defaults. If you reset the OkiLAN 6120e while a job is printing, the job may not print successfully.

Creating Customized Views

OkiNet for TCP/IP allows users to create multiple customized views for the list of OkiLAN 6120e products. By creating different views, the user can narrow the information displayed to that which is of highest priority. These views can be saved and selected as needed.



OkiNet has two predefined views. The *All Print Servers* view displays all the print servers available on your local network. The *Unconfigured Print Servers* view displays only the print servers on the local network that have not been configured.

Creating a New Customized View

To create a new view, select **New** from the *View* menu. Enter a name for the new customized view. Define **Filters, Sorts, Column, Search** information and **Refresh** rates. Select **OK** to save this view.

Selecting an Existing View

To select an existing view, choose **Select** from the *View* menu. Highlight the view you wish to open and select **OK**. The OkiLAN 6120e list will be displayed as described by the view selected.

Modifying View Settings

Before modifying the settings, select the name of the view you wish to edit from the *Name* field.

Sort

The Sort option displays the OkiLAN 6120e list in a specific order. The list can also be sorted by clicking on the column by which you wish to sort the list. A sort order can be defined on columns displayed on the main OkiNet for TCP/IP screen.

Display Filter

The filter option displays only those print servers matching specific criteria. The print server list can be filtered by any of the following:

Filter By	Enter for the Filter Value
<No Filter>	No value
DateCode	Four digits followed by a letter (e.g. 9502B)
Default Gateway	XXX.XXX.XXX.XXX; use "*" for groups / subnets
H/W Address	12 hexadecimal digits for the Ethernet address
IP Address	XXX.XXX.XXX.XXX; use "*" for groups / subnets
Name	SNMP System Name (sys name) for the print server
Product #	Select from the list of product number(s)
Product Type	Select from the list of product types
Status	Select from the list of status conditions
Subnet Mask	XXX.XXX.XXX.XXX; use "*" for groups / subnets

Search Filter

The Search option defines the criteria for identifying OkiLAN 6120e products on the network.

- **Search Local Network** - This method broadcasts a discovery request to locate all OkiLAN 6120e print servers on the local network. All OkiLAN 6120e print servers that respond are placed in the list. If you have a large number of OkiLAN 6120e print servers on your local network and wish to minimize network traffic, do not select this option.
- **Specify Devices/Networks** - This method adds specific print servers (or groups of print servers) to the list. If you have OkiLAN 6120e print servers that are not on the local network (i.e. across routers), the address of each OkiLAN 6120e must be entered in order to locate and insert it into the list.

Example: 192.168.42.24

When specifying a subnet, enter a * for the last (fourth) part of the IP address. OkiNet for TCP/IP will search every address on the subnet.

Example: 192.168.42.*

Select **Add** to enter these addresses.

Columns

Column information for each print server can be modified.

To define the location of a new column, select the location in the *Columns Displayed* field where you wish the new column to be inserted, then select **Add**. If no location is selected, the new column will be added to the end of the list and the column will be displayed to the right of the last column on the screen.

For example, if you currently have three columns displayed and you wish to add a fourth column to the far left of the screen, follow these steps:

1. Select the first column in the *Columns Displayed* field.
2. Select the column to be added from the *Columns Available* field.
3. Select **Add**.

Columns may also be removed by selecting Remove from the *Columns Available* field.

Refresh

The refresh rate defines how often the OkiNet for TCP/IP utility updates the main print server list. To define a refresh rate, select **Automatic Refresh** and enter the refresh rate in the field provided. Decide how frequently to refresh the screen based on factors such as network traffic and desire for most recent information.

For example, if traffic on your network is not an issue and the most current information is desired, set the refresh rate to 1 so that the screen is updated every minute.

If network traffic is an issue, you may wish to set the refresh rate to 10. This would update the screen every ten minutes and minimize network traffic.

Permanently Defining SNMP Access Information

Access to OkiLAN 6120e configuration and diagnostic information is determined by using community names. The *Special Options* window is used to permanently define access information so that it does not need to be entered each time the OkiLAN 6120e is accessed. To *Get* and/or *Set* information on the OkiLAN 6120e through OkiNet for TCP/IP, community names must match the community names assigned to the OkiLAN 6120e.

To configure OkiNet for TCP/IP to use the correct community names, select **Special Options** from the *File* menu.

IP Address

This field displays the address of each OkiLAN 6120e for which OkiNet for TCP/IP has defined access. To add a new IP address to this list, select the **Add** button.

Get Community Name

Enter the *Get* Community Name necessary to access the OkiLAN 6120e or group of OkiLAN 6120e products selected.

Set Community Name

Enter the *Set* Community Name necessary to access the OkiLAN 6120e or group of OkiLAN 6120e print servers selected.

Add

Select the **Add** button to define access to a new OkiLAN 6120e or a group of OkiLAN 6120e print servers. The IP address must follow the format **XXX.XXX.XXX.XXX**, where each **XXX** is a number from 0 to 255. Use ***** to specify groups/subnets.

For example: To add a single OkiLAN 6120e, enter 198.168.42.24. To add a group of OkiLAN 6120e print servers, enter 198.168.42.*.

Delete

The **Delete** button deletes an OkiLAN 6120e access entry in the IP address.

Configuring the Discovery UDP Port Number

In order to discover OkiLAN 6120e print servers on the network, OkiNet for TCP/IP communicates with the OkiLAN 6120e print servers on a UDP port number. Normally, using this port number should not interfere with other devices on the network. If there are problems using the given port number, select a new number.

Note: Windows NT will not permit the use of Port 9 for discovery. Select one of the other available ports.

Starting a Telnet Session

A simple telnet interface has been provided to communicate with devices supporting telnet. A *telnet session* can be started by selecting the OkiLAN 6120e from the print server list and choosing the **Telnet Session** option from the *Tools* menu. For more information about how to configure an OkiLAN 6120e using telnet, see Chapter 6.

Starting the BOOTP Server

OKI has provided a stand-alone BOOTP server to help assign IP addresses to the OkiLAN 6120e.

To access the stand-alone BOOTP server, select **BOOTP Server** from the *Tools* menu or run the program **bootpsrv.exe** from Windows. The BOOTP server displays all BOOTP activity on the local network. It responds to BOOTP requests for which the hardware address has been entered into the BOOTP file. For more information, view the on-line help for the BOOTP server.

Chapter 5

Web Configuration

If the DHCP protocol is enabled as a default, the print server may be accessed through an ordinary Internet Web browser, such as Netscape Navigator or Microsoft Internet Explorer. See Section II, Chapter 4, *OkiLAN 6020e Web Configuration*, for more information.

Chapter 6

Telnet Configuration

Overview

The OkiLAN 6120e Configuration utility (*telnet*) provides system, network and printer status information and allows you to change the configuration of your OkiLAN 6120e.

Note: The configuration of your OkiLAN 6120e is password protected. Only authorized users can alter the configuration.

Running a Telnet Session

1. To run the configuration utility, type the following:

telnet <OkiLAN 6120e_name>

2. Replace *OkiLAN 6120e_name* with the IP address or the host name assigned to the OkiLAN 6120e you want to configure.

A screen will appear displaying an introductory message. When prompted for a password, enter **OkiLAN**. The password will not be echoed.

3. When you are finished typing your password, press **Enter**. For password verification, you will then be asked to enter your password again.

Each time you use the utility, you will be asked to enter your password. If you fail to enter the password correctly in three attempts, your connection with the OkiLAN 6120e will be closed.

4. Once your password is entered and accepted, a list of options will display. An explanation of each option follows.

OkiLAN 6120e Configuration Utility

1. Show Network/Printer Information
2. Change Password
3. Specify Print Server IP Address
4. Specify Subnet Mask For Your Network
5. Identify Default Gateway IP Address
6. Configure Port
7. TCP Connection Configuration
8. Download New Firmware
9. Restore to Factory Defaults

To select an option above, type its number and press **Enter**.

To quit, press **Enter**.

Showing Network/Printer Information (Option 1)

This option displays current network and printer information.

Changing the Password (Option 2)

This option allows you to change the password required for access to this utility. We recommend that you change your password periodically, especially if security may have been compromised. Type a password (5-24 characters long). The characters you type will not appear on the screen. When you are done typing, press **Enter**. You will be asked to enter your password again. This allows you to verify your password was typed correctly.

You must save your changes when you exit the utility for the new password to take effect.

Specify Print Server IP Address (Option 3)

This option allows you to select the method the OkiLAN 6120e uses to obtain its IP address or to set a permanent IP address. If the OkiLAN 6120e has been configured to use a permanent IP address, a DHCP, RARP or BOOTP server does not need to be available when the OkiLAN 6120e is powered on.

If you change the IP address, the change will remain undetected until the OkiLAN 6120e is reset or is powered off and on.

Remember, when choosing a permanent IP address:

- The IP address must follow the format XXX.XXX.XXX.XXX, where each XXX is a number between 0 and 255.
- If you select an invalid IP address you may not be able to access the OkiLAN 6120e.
- You can also use OkiNet for TCP/IP, OkiNet for NetWare or the Banyan VINES OkiNet for VINES utilities (may apply to other OkiLAN print server models) to set a permanent IP address.

Note: If you select an invalid IP address you may not be able to access the OkiLAN 6120e. Use this option with care!

Specify the Subnet Mask for Your Network (Option 4)

If your network environment includes subnets, you will want to set the subnet mask.

The subnet mask must follow the format XXX.XXX.XXX.XXX, where each XXX is a number between 0 and 255.

The default subnet mask is 0.0.0.0. The OkiLAN 6120e interprets a subnet mask of 0.0.0.0 or 255.255.255.255 as no subnet mask specified.

If you change the subnet mask, the change will remain undetected until the OkiLAN 6120e is reset or is power cycled.

Note: If you select an invalid subnet mask you may not be able to access the OkiLAN 6120e. Use this option with care!

Identify Default Gateway IP Address (Option 5)

If your local network is attached to other networks, you must specify the address of your default gateway. Whenever packets need to be sent to another network, the default gateway is used.

The gateway address must follow the format XXX.XXX.XXX.XXX, where each XXX is a number between 0 and 255.

When the default gateway is changed, it will remain undetected until the OkiLAN 6120e is reset or is power cycled.

Note: If you select an invalid default gateway or the default gateway goes down, the OkiLAN 6120e may not be able to communicate with non-local networks.

Configure Port (Option 6)

After the Configure menu appears, you can access the following configuration option screens.

Specify Configuration Page Language

This option enables you to select how the OkiLAN 6120e configuration pages should be printed: Text (default), PCL, PostScript, or OFF.

Configure Language Switching

This option asks you to select the language of your printer. For a description of language switching options, see pages IV-28 and IV-29.

Configure Printer Type

This option enables you to indicate the printer type to which the OkiLAN 6120e is connected. Printer choices are:

1. Oki Data printer.
 2. Custom printer.
- **Language Switching Sequence** - If you select **Custom Printer** from the *Configure Printer Type* screen, you must indicate the switching sequence to be used for both PCL and PostScript. This is only necessary if language switching is set to something other than OFF.

TCP Connection Configuration (Option 7)

TCP Connection Timeout

This is used to sever network TCP/IP Connections that are idle for more than a specified period of time (between 1 and 3600 seconds). You can also disable timeout checking. Under most conditions you will want to leave this function enabled.

Raw Port Number

Set the port number where the raw port connections will be accepted.

Download New Firmware (Option 8)

This option is provided for future product modifications and enhancements. It requires an update file from OKI.

CAUTION: Do NOT use this option without having the upgrade files on hand. The OkiLAN 6120e will be locked in download mode. This is indicated by a flashing orange-green Status LED.

The latest firmware and utilities are available through:

- **World Wide Web: <http://www.okidata.com>**

Firmware update instructions are available with the download file.

Restore to Factory Default Configuration (Option 9)

This option automatically restores the OkiLAN 6120e to its original factory defaults. Be aware that when you restore the OkiLAN 6120e to the original factory default settings, only the TCP/IP protocol and output port information is restored and your TCP/IP password and IP address are erased.

CAUTION: Make sure that no print jobs are active when you select Restore to Factory Defaults. Performing this operation will restore parameters for the TCP/IP protocol to factory defaults. If you reset the OkiLAN 6120e while a job is printing, the job may not print successfully.

Appendix A

Troubleshooting

Main Status Indicator

Upon power-up, the main status indicator flashes orange. It changes to green when the OkiLAN 6120e passes self-test. The indicator stays orange if the OkiLAN 6120e fails self-test. If the indicator turns solid orange due to an error, a configuration sheet will be printed automatically. Check the error message reported on the configuration sheet.

Restoring the OkiLAN 6120e to Factory Defaults

In most cases, the best way to restore the OkiLAN 6120e to factory defaults is via *telnet*. However, if you are unable to connect to the device because of a configuration error, use the following method which does not require a network connection.

To restore the OkiLAN 6120e to factory defaults, complete the following steps:

1. Power down the OkiLAN 6120e.
2. While holding in the **Print Configuration Sheet Test** button, power up the OkiLAN 6120e. Hold the button until the status indicator turns solid green.
3. Power cycle the OkiLAN 6120e. It will have restored itself to defaults.

Unable to Assign IP Address

Gleaning

If you *ping* the device and are not getting a response, the glean is not working. Check the following possible problems:

- Verify the ARP table contains the correct hardware and IP address by running the ‘*arp -a*’ command.
- If you are getting a response, but the OkiLAN 6120e LED is still blinking green, power down the print server and try the ping again. There might be a different device answering to the ping.
- Verify the OkiLAN 6120e is on the same subnet as the computer running the ping.
- The *glean* will not work if the OkiLAN 6120e has already defaulted to an IP address two minutes after power up. The LED will turn solid green and the device will print a configuration page. Power cycle the device and try the glean again.

RARP or BOOTP

If you are using a BOOTP or RARP server and the OkiLAN 6120e is not getting an IP address, check the following:

- Verify the BOOTP/RARP configuration files are correctly set up (“/etc/ethers” and “/etc/hosts” for RARP and “/etc/bootptab” for BOOTP). Verify the files have the correct hardware address of the OkiLAN 6120e. If using RARP, check that the hostnames are the same between the “/etc/ethers” and “/etc/hosts” files.

UNIX BOOTP

If you are running UNIX, try the following methods with the BOOTP server (check the documentation for your particular UNIX flavor).

- Verify the BOOTP server has reread the “/etc/bootptab” file when the new entry was added. If the BOOTP server was running when you added the new entries, the server might not have reread the new bootptab file. Try sending the SIGHUP signal to the running BOOTP server. For example, *kill -HUP <process id of bootpd>* tells it to reread “/etc/bootptab”. Most BOOTP servers support this option. Check your local BOOTP documentation. If this does not work, restart the BOOTP server (kill and restart the process).
- Some BOOTP servers will write their internal bootptab tables to a file when they receive a SIGUSR1 signal. You can check this file to verify the hardware and IP address are correct. You can use the kill command to send signals. For example, *kill -USR1 <process id of bootpd>*. Check your documentation for more information.
- Check the system’s syslog file. Some BOOTP servers will write error messages into the syslog file.

Example:

```
Sep 6 14:38:43 bootpd[17565]: hardware  
address not found: 004068175042
```

This message appears when the BOOTP server received a request from a device not in its internal bootptab tables.

Static Route Entry

If the OkiLAN 6120e has printed a configuration page showing the default address, but it cannot be reached through *telnet*, check the following:

- Display the host's routing tables with the 'netstat - r' command. Verify the route has been set correctly.
- If the route is set correctly, try *pinging* the device.
- Verify the OkiLAN 6120e is on the same subnet as the host from which you are *telneting*. As a drastic measure, try creating an isolated subnet with your host and the OkiLAN 6120e. If you are using 10BASE2, run the cable directly from the host to the OkiLAN 6120e. If using 10/100BASE-T cabling, connect the host to the OkiLAN 6120e through a hub not connected to any other host.
- If the static route has been set up and can *telnet* to the OkiLAN 6120e, but your changes do not seem to be saved, check the host's routing tables. You might have *telneted* to a different OkiLAN 6120e than the one you intended. While in *telnet*, select the second menu option, **Show Network/Printer Information**. The hardware address and serial number are displayed. Verify they are the same as the unit you are configuring.
- Turn off the OkiLAN 6120e you want to configure. Run *telnet* again. If you reach a different device, there is an IP address conflict.
- If you are able to *ping* to the OkiLAN 6120e, but are unable to *telnet*, the IP address is probably being shared with another device that does not support *telnet*.

OkiNet for TCP/IP - Winsock Errors

- If you see an error before OkiNet for TCP/IP appears on the screen, try setting a host name in the host's file in the Windows directory (check the documentation for your Windows TCP/IP stack).
- If you have difficulty seeing a particular OkiLAN 6120e, try moving the device onto the same subnet as the computer running the utility.
- If OkiNet for TCP/IP gives you the Winsock error: Could not bind to socket, use the Special Options dialog under the File menu to change the Discovery UDP Port to a different port number.

Hardware Error Messages

ST: Cable not connected

Self-test has determined that the network cable is not connected.

- Check the cable connection to the OkiLAN 6120e.
- Move the OkiLAN 6120e to another known working node.

If you find the cable is connected and you are still receiving this message or any other "ST:" error message, power cycle the OkiLAN 6120e. If the error continues, call Oki Data Customer Support at 1-800-OKI-DATA (1-800-654-3282).

System CRC Failed

The OkiLAN 6120e has failed.

- Power cycle the OkiLAN 6120e once. If the error continues, call Oki Data Customer Support at 1-800-OKI-DATA (1-800-654-3282).

Printing a Configuration Page

If the status indicator turns solid orange due to an error and no configuration page is printed, your printer may be configured for PostScript operation. If so, you must re-configure your printer for standard ASCII mode so that the configuration page can be printed.

If you do not know the configuration of the OkiLAN 6120e or you think the configuration has been changed, use the following method for printing a configuration page:

- With the network cable detached, attach the OkiLAN 6120e to a printer and power cycle the print server. When the OkiLAN 6120e powers up, it will detect the detached network cable and print a configuration sheet. If no configuration sheet is printed and the indicator has turned green, check the printer and verify it is ready to print. If you are using boot protocols (RARP or BOOTP) to assign the IP address, the IP address will be listed as *Using network protocol (0.0.0.0)* on the configuration page.

Unable to Print

LPR/LP

- If the indicator blinks green, the OkiLAN 6120e is receiving data. If nothing is actually printing, check the printer settings. For example, if you are using a PostScript printer, verify the OkiLAN 6120e is also set to PostScript.
- Try *pinging* the OkiLAN 6120e by its IP address (not the hostname). This will verify the unit is functioning on the network.
- If the *ping* succeeds, try *ftping* a test file to the print server. If the ping fails, you might have a configuration problem with the OkiLAN 6120e (the IP address or gateway address might be incorrect, etc.).

- If the *ftp* succeeds, there is a problem with the *lpr/lp* setup. Verify the hostname or IP address is correctly set for the queue. Try doing an *lpstat* (System V) or *lpq* (BSD) to query the status of the OkiLAN 6120e.

FTP

- If the indicator blinks green, the printer is receiving data. If nothing is actually printing, check the printer settings. For example, if you are using a PostScript printer, verify the OkiLAN 6120e is set to PostScript also.
- Try *pinging* the device by its IP address (not the hostname). This will verify the OkiLAN 6120e is functioning on the network.
- If you cannot connect over *ftp* but the *ping* succeeds, try *telneting* to the OkiLAN 6120e and print a configuration page to verify settings. If that fails, you might have a TCP/IP configuration problem with the OkiLAN 6120e.

Appendix B

Application Considerations

Overview

This appendix provides application notes for the following:

- Assigning the OkiLAN 6120e IP Address with BOOTP
- Assigning the OkiLAN 6120e IP Address with RARP
- Using the Windows NT v3.5 LPR Print Monitor
- Configuring HP-UX v8.07 for Printing
- Configuring HP-UX v9.xx for Printing
- Configuring HP-UX v10.xx for Printing
- Configuring SCO UNIX for Printing
- Configuring IBM's AIX ver. 3.x for Printing
- Configuring the OkiLAN 6120e for Solaris Printing
- Configuring Sun-OS v4.1.x or Ultrix v4.2 for Printing

Assigning the OkiLAN 6120e IP Address with BOOTP

BOOTP is an acronym for **BOOT**Strap **P**rotocol. Every TCP/IP network device is required to have a unique 32-bit IP address assigned to it. TCP/IP network devices will have both an IP address and a 48 bit Ethernet/Token-Ring (network hardware) address. Ethernet addresses usually cannot be configured and are *hard coded* by the manufacturer of the device. BOOTP is a protocol used by devices that *know* their network hardware address, but do not *know* their IP address. When powering up on a network, a device that uses BOOTP will broadcast its network hardware address in a BOOT request packet. A BOOTP server (which may be a UNIX workstation) will respond with an IP address. The device will then *know* its IP address and use this address to perform subsequent TCP/IP transactions.

Note: Once the OkiLAN 6120e has been assigned an IP address, the OkiLAN 6120e configuration utility (which is run by accessing the OkiLAN 6120e using *telnet*) or OkiNet for TCP/IP will allow you to change and/or make the IP address permanent. This means that a BOOTP server needs to be available only during installation of the OkiLAN 6120e.

Address Formats

Network hardware addresses are 48-bits and are expressed in 6 bytes (hexadecimal format) usually separated by colons. Each hexadecimal byte has a range from 00 to FF.

A name can be arbitrarily assigned to any device on a network. The following examples use the name OKIPRINTER. Remember that this name is arbitrary; a customer can assign any name they wish.

/etc/bootptab: The “/etc/bootptab” file has entries where each entry maps a network hardware address to an IP address.

Example: OKIPRINTER:\
ht=ether:\
ha=0040681750A4:\
ip=192.168.42.55

The *ht* signifies hardware type. For the OkiLAN 6120e, it will always be *ether* for an Ethernet device and *token* for a Token-Ring device. The *ha* signifies the network hardware address. For BOOTP, the network hardware address must be represented without the colons between each byte. The *ip* part of the entry is where the IP address is specified. There are several other parameters that can be specified in a bootptab entry. However, the three parameters shown here are the only ones required for OkiLAN 6120e installation.

The following sequence of events occurs during the power up of the OkiLAN 6120e using BOOTP.

1. An OkiLAN 6120e powers up but does not know its IP address. (It does know its network hardware address.)
2. The OkiLAN 6120e sends out a BOOTP request packet with its network hardware address. For this example, the network hardware address is 00:40:68:17:50:A4.
3. The bootpd daemon running on a BOOTP server (which in this example is a UNIX workstation) sees the BOOTP request along with the network hardware address. It looks up the network hardware address in the “/etc/bootptab” file. The bootpd daemon finds the associated IP address of the device in the bootptab file.

4. The bootpd daemon transmits a response to the OkiLAN 6120e with the IP address 192.168.42.55. The OkiLAN 6120e will use this IP address for all subsequent transmissions.

For these steps to work properly, at least one BOOTP daemon (bootpd) must be running on the BOOTP server. To test whether a BOOTP daemon is running on the BOOTP server, use the *ps* command with the *show all process* option within fifteen minutes of an attempted BOOTP request. Unfortunately, the *ps* options differ from one UNIX workstation to another. Perform a *man ps* at the UNIX prompt to consult a manual page on the *ps* command for a particular workstation. If bootpd is not running on a workstation, type *man bootpd* at the UNIX prompt to consult a manual page on the BOOTP daemon and how to start it.

Limitations

Often TCP/IP networks are divided into *subnets*. BOOTP does not work across subnets. When installing an OkiLAN 6120e, make sure the following criteria are met for BOOTP to work properly.

- Both the BOOTP server and the OkiLAN 6120e are physically attached to the same subnet.
- The IP address assigned to the OkiLAN 6120e and the IP address of the BOOTP server belong to the same subnet.

OR

- Your router(s) are configured to forward BOOTP packets between the OkiLAN 6120e's subnet and the subnet of the host running the BOOTP server.

Configuring the OkiLAN 6120e IP Address with RARP

RARP is an acronym for **R**everse **A**ddress **R**esolution **P**rotocol. Every TCP/IP network device must have a unique 32-bit IP address. TCP/IP network devices will have both an IP address and a 48-bit Ethernet (network hardware) address. Ethernet addresses usually cannot be configured and are *hard coded* by the manufacturer of the device. RARP is a protocol used by devices that *know* their network hardware address, but do not *know* their IP address. When powering up on a network, a device that uses RARP will broadcast its network hardware address in a RARP request message. A RARP server (which may be a UNIX workstation) will respond with an IP address. The device will then *know* its IP address and use this address to perform subsequent TCP/IP transactions.

Note: Once the OkiLAN 6120e has been assigned an IP address, the OkiLAN 6120e configuration utility (which is accessed by *telneting* to the OkiLAN 6120e) or OkiNet for TCP/IP will allow you to change and/or make the IP address permanent. This means that a RARP server needs to be available only during installation of the OkiLAN 6120e.

Address Formats

Network hardware addresses are 48-bits and are expressed in 6 bytes in hexadecimal format usually separated by colons. Each hexadecimal byte has a range from 00 to FF.

Example: 00:02:16:17:50:A4

IP addresses are 32-bits and are expressed in 4 bytes in decimal format usually separated by periods. Each decimal byte has a range from 0 to 255.

Example: 192.168.42:55

Configuration Files

The purpose of RARP is to look up a 32-bit IP address given a 48-bit network hardware address. The RARP server (which is usually a UNIX workstation running a *rarpd* daemon) performs this function using two configuration files and one or more daemons. The configuration files are “/etc/hosts” and “/etc/ethers” and the daemon is called *rarpd*. A name can be assigned to any device on a network and is arbitrary. For the following examples the name used for the OkiLAN 6120e is OKIPRINTER. Remember that this name is arbitrary; a customer can assign any name.

/etc/hosts: The “/etc/hosts” file is where each entry maps a host name to an IP address. An example entry is shown below.

192.168.42.55 OKIPRINTER

/etc/ethers: The “/etc/ethers” file is where each entry maps a host name to a network hardware address. An example entry is shown below.

00:02:16:17:50:A4 OKIPRINTER

The following sequence of events occurs during the power up of the OkiLAN 6120e using RARP:

1. The OkiLAN 6120e powers up but does not know its IP address. However, it does know its network hardware address.
2. It sends out a RARP request message with its network hardware address. For this example, the OkiLAN 6120e address is 00:02:16:17:50:A4.
3. The *rarpd* daemon running on a RARP server (in this example the RARP server is a UNIX workstation) sees the RARP request along with the network hardware address in the “/etc/ethers” file. The *rarpd* daemon finds the host name, OKIPRINTER, listed as the name associated with the network hardware address.

4. The `rarpd` then consults the `/etc/hosts` file and looks up the name `OKIPRINTER`. It finds an IP address (in this case `192.168.42.55`) associated with the name `OKIPRINTER`.
5. The `rarpd` daemon transmits a response to the OkiLAN 6120e with the IP address `192.168.42.55`. The OkiLAN 6120e will then use this IP address for all subsequent transmissions.

For all these steps to work properly, at least one RARP daemon (`rarpd`) must be running on the RARP server. On most UNIX systems, this can be tested by using the `ps` command with the `show all processes` option. Unfortunately, the `ps` options differ from one UNIX workstation to another. Perform a `man ps` at the UNIX prompt to consult a manual page on the `ps` command for a particular workstation. If `rarpd` is not running on a workstation, type `man rarpd` at the UNIX prompt to consult a manual page on the RARP daemon and how to start it.

Limitations

Often TCP/IP networks are divided into subnets. RARP does not work across *subnets*. When installing an OkiLAN 6120e, make sure the following two criteria are met for RARP to work properly.

1. Both the RARP server and the OkiLAN 6120e are physically attached to the same subnet.
2. The IP address assigned to the OkiLAN 6120e and the IP address of the RARP server belong to the same subnet.

Configuring HP-UX v8.07 for Printing with the OkiLAN 6120e

This application note describes the configuration of the printing system on the HP-UX ver. 8.07 of the UNIX operating system. For clarity and brevity, the following specific names will be used to represent general devices or concepts.

- **lj4** - The local queue name on the HP-UX system to which print jobs that are destined for a printer attached to the OkiLAN 6120e will be directed.
- **OKIPRINTER** - The host name of the *remote system* which is the OkiLAN 6120e. For example, to *telnet* to the OkiLAN 6120e and invoke the OkiLAN 6120e Configuration utility, you would type **telnet OKIPRINTER**. A host name is not required for the OkiLAN 6120e, the IP Address may be used.
- **yourqueuename** - This is the name of the queue on the OkiLAN 6120e and must end with 1, 2, 3 or 4, depending on the port selected to service the print jobs.

If FF, LF or NF are the last two letters of the queue name, the job will be converted accordingly. See pages IV-15 and IV-16 for more information on remote queue names.

Prerequisites

Before you proceed, the following prerequisites must be met. Most of the time, steps 2 through 5 are already configured since the HP-UX system is on a TCP/IP network. Do not perform steps 2 through 5 unless the installation procedure fails!

1. The name OKIPRINTER and the IP address assigned to the OkiLAN 6120e are in the “/etc/hosts” file on the HP-UX system.

2. Make sure the rlp process is not running by typing at the UNIX prompt:

ps -e | grep rlp

If rlp is not running, you will not see any output after executing this command.

If rlp is running (that is, if you see output after executing this command), kill the process with the command:

kill -15 process_number

3. Make sure the following entry is in the “etc/inetd.conf” file:

**printer stream tcp nowait root /usr/lib/
rlpdaemon rlpdaemon -I**

If the rlp daemon is not running when a print request is made, this entry in “etc/inetd.conf” tells inetd to auto-start the rlp daemon to service the pending print request. This is helpful if the daemon was terminated for some reason. For more information on inetd or “etc/inetd.conf”, type **man inetd** or **man inetd.conf**.

4. Make sure the following entry is in the “etc/services” file

printer 515/tcp spooler

5. Start inetd by typing the following at the UNIX prompt:

/etc/inetd -c

Procedure

HP-UX uses an interactive utility called SAM (System Administration Manager) to configure printing. To configure printing using SAM, do the following:

1. Login to the HP-UX system as root.
2. Invoke the SAM utility by typing **sam** at the UNIX prompt. (We suggest you do this at the system console. SAM uses a screen oriented interface that works best at the console.)

3. Select the following options, in order, from the *SAM* menu:

Peripheral Devices ->
Printers and Plotters ->
Actions -> Add a Remote Printer
(Do **NOT** select Add a Network Printer)

A form appears asking you to define a remote printer.

4. Enter information into the following fields as described.

a) *Printer name* - **lj4**

This is the name of the printer as referenced by the local HP machine. Print jobs sent to this printer are passed to the OkiLAN 6120e.

b) *Remote system name* - **OKIPRINTER**

This is the name of the OkiLAN 6120e on the network. The name must also be in the “/etc/hosts” file.

c) *Remote printer name* - **yourqueuname**

This is the name of the queue on the OkiLAN 6120e and must end with 1, 2, 3, or 4, depending on the port selected to service the print jobs.

d) *Remote cancel model* - **rcmodel**

Used for remote printer job removal.

e) *Remote status model* - **rsmodel**

Used for remote printer queue status.

f) *Make this the system default printer?* (y or n) - **n**

g) *Printer class* - (**optional**)

h) *Restrict cancel* - (**optional**)

i) *Remote printer on a BSD system?* (y or n) - **y**

Tells the HP-UX system that it is communicating with a Berkeley style remote printer (such as LPD).

5. Select **Perform Task** from the *SAM* menu.

6. Enable the printer you just created using SAM.

Peripheral Devices ->
Printers and Plotters ->
Enable a Printer ...

7. *Printer name:* — **lj4**

8. Start the LP request scheduler by typing:

/usr/lib/lpsched

9. Run a test print job to the OkiLAN 6120e with the following command:

lp -d lj4 filename

Configuring HP-UX v9.xx for Printing with the OkiLAN 6120e

This application note describes the configuration of the printing system on the HP-UX ver. 9.xx of the UNIX operating system. For clarity and brevity, the following specific names will be used to represent general devices or concepts.

- **lj4** - The local queue name on the HP-UX system to which print jobs will be directed. The print jobs are destined for a printer attached to the OkiLAN 6120e.
- **OKIPRINTER** - The host name of the *remote system* which is the OkiLAN 6120e. For example, to *telnet* to the OkiLAN 6120e and invoke the OkiLAN 6120e Configuration utility, you would type **telnet OKIPRINTER**. A host name is not required for the OkiLAN 6120e, the IP Address may be used.
- **yourqueuename** - This is the name of the queue on the OkiLAN 6120e and must end with 1, 2, 3 or 4, depending on the port selected to service the print jobs.

If FF, LF or NF are the last two letters of the queue name, the job will be converted accordingly. See pages IV-15 and IV-16 for more information on *Remote Queue Names*.

Prerequisites

Before you proceed, the following prerequisites must be met. Most of the time steps 2 through 5 are already configured since the HP-UX system is on a TCP/IP network. **Do not perform steps 2 through 5 unless the installation procedure fails!**

1. The name **OKIPRINTER** and the IP address assigned to the OkiLAN 6120e are in the “/etc/hosts” file on the HP-UX system.
2. Make sure the rlp process is not running by typing at the UNIX prompt:

ps -e | grep rlp

If rlp is not running, you will not see any output after executing this command.

If rlp is running (that is, if you see output after executing this command), kill the process with the command:

kill -15 process_number.

3. Make sure the following entry is in the “/etc/inetd.conf” file:

printer stream tcp nowait root “/usr/lib/rlpdaemon” rlpdaemon -i

If the rlp daemon is not running when a print request is made, this entry in “/etc/inetd.conf” will tell inetd to auto-start the rlp daemon and service the pending print request. This is helpful if the daemon died or was terminated for some reason. For more information on inetd or “/etc/inetd.conf”, type **man inetd** or **man inetd.conf**.

4. Make sure the following entry is in the “/etc/services” file:

printer 515/tcp spooler

5. Start inetd by typing the following at the UNIX prompt:

/etc/inetd -c

Procedure

HP-UX uses an interactive utility called SAM (System Administration Manager) to configure printing.

1. Login to the HP-UX system as root.
2. Invoke the SAM utility by typing **sam** at the UNIX prompt. (We suggest you do this at the system console. SAM uses a screen oriented interface that works best at the console.)
3. Select the following options from the SAM menu:
 - Printers and Plotters ->
 - Printers/Plotters ->
 - Actions -> Add a Remote Printer
 - (Do **NOT** add a Network Printer)

A form appears asking you to define a remote printer.

4. Enter information into the following fields as described.
 - a) *Printer name* - **lj4**

The name of the printer as referenced by the local HP machine. Print jobs sent to this printer are passed to the OkiLAN 6120e.
 - b) *Remote system name* - **OKIPRINTER**

The name of the OkiLAN 6120e on the network. The name must also be in the /etc/hosts file.
 - c) *Remote printer name* - **yourqueuname**

This is the name of the queue on the OkiLAN 6120e and must end with 1, 2, 3 or 4, depending on the port selected to service the print jobs.
 - d) *Remote cancel model* - **rcmodel**

Used for remote printer job removal.
 - e) *Remote status model* - **rsmodel**

Used for remote printer queue status.
 - f) *Printer class* - (**optional**)
 - g) *Make this the system default printer.* Leave the box unchecked.

- h) Allow anyone to cancel requests. Check if desired.
 - i) *Remote printer is on a BSD system.* Check this box.
Tells the HP-UX system that it is communicating with a Berkeley style remote printer (such as LPD).
5. Select the **OK** button. A status window will outline the tasks performed to install the queue. When you see the message *task completed*, select **OK**.
 6. Pull down the *Lists* menu and select **Exit**.
 7. Select the **Exit SAM** button.
 8. Test printing to the OkiLAN 6120e with the following command:

lp -d lj4 filename

Configuring HP-UX v10.xx for Printing with the OkiLAN 6120e

This application note describes the configuration of the printing system on the HP-UX ver. 10.xx of the UNIX operating system. For clarity and brevity, the following specific names will be used to represent general devices or concepts.

- **lj4** - The local queue name on the HP-UX system to which print jobs will be directed. The print jobs are destined for a printer attached to the OkiLAN 6120e.
- **OKIPRINTER** - The host name of the *remote system* which is the OkiLAN 6120e. For example, to *telnet* to the OkiLAN 6120e and invoke the OkiLAN 6120e Configuration utility, you would type **telnet OKIPRINTER**. A host name is not required for the OkiLAN 6120e, the IP Address may be used.

- **yourqueuname** - This is the name of the queue on the OkiLAN 6120e and must end with 1, 2, 3 or 4, depending on the port selected to service the print jobs.

If FF, LF or NF are the last two letters of the queue name, the job will be converted accordingly. See the section on *Remote Queue Names*.

Prerequisites

Before you proceed, the following prerequisites must be met. Most of the time steps 2 through 5 are already configured since the HP-UX system is on a TCP/IP network. **Do not perform steps 2 through 5 unless the installation procedure fails!**

1. The name **OKIPRINTER** and the IP address assigned to the OkiLAN 6120e are in the “/etc/hosts” file on the HP-UX system.
2. Make sure the rlp process is not running by typing at the UNIX prompt:

ps -e | grep rlp

If rlp is not running, you will not see any output after executing this command.

If rlp is running (that is, if you see output after executing this command), kill the process with the command:

kill -15 process_number.

3. Make sure the following entry is in the “/etc/inetd.conf” file:

printer stream tcp nowait root “/usr/lib/rlpdaemon” rlpdaemon -i

If the rlp daemon is not running when a print request is made, this entry in “/etc/inetd.conf” will tell inetd to auto-start the rlp daemon and service the pending print request. This is helpful if the daemon died or was terminated for some reason. For more information on inetd or “/etc/inetd.conf”, type **man inetd** or **man inetd.conf**.

4. Make sure the following entry is in the “/etc/services” file:

printer 515/tcp spooler

5. Start inetd by typing the following at the UNIX prompt:

/etc/inetd -c

Procedure

HP-UX uses an interactive utility called SAM (System Administration Manager) to configure printing.

1. Login to the HP-UX system as root.
2. Invoke the SAM utility by typing **sam** at the UNIX prompt. (We suggest you do this at the system console. SAM uses a screen oriented interface that works best at the console.)
3. Select the following options from the *SAM* menu:

Printers and Plotters ->

LP Spooler ->

Printers/Plotters ->

Actions -> Add a Remote Printer

(Do **NOT** add a Network Printer)

A form appears asking you to define a remote printer.

4. Enter information into the following fields as described.

a) *Printer name* - **lj4**

The name of the printer as referenced by the local HP machine. Print jobs sent to this printer are passed to the OkiLAN 6120e.

b) *Remote system name* - **OKIPRINTER**

The name of the OkiLAN 6120e on the network. The name must also be in the /etc/hosts file.

c) *Remote printer name* - **yourqueue****name**

This is the name of the queue on the OkiLAN 6120e and must end with 1, 2, 3 or 4, depending on the port selected to service the print jobs.

d) *Remote cancel model* - **rcmodel**

Used for remote printer job removal.

e) *Remote status model* - **rsmodel**

Used for remote printer queue status.

f) *Printer class* - (**optional**)

g) *Make this the system default printer.* Leave box unchecked.

h) *Allow anyone to cancel requests.* Check if desired.

i) *Remote printer is on a BSD system.* Check this box.

Tells the HP-UX system that it is communicating with a Berkeley style remote printer (such as LPD).

5. Select the **OK** button. A status window will outline the tasks performed to install the queue. When you see the message *task completed*, select **OK**.

6. Pull down the *Lists* menu and select **Exit**.

7. Select the **Exit SAM** button.

8. Test printing to the OkiLAN 6120e with the following command:

lp -d lj4 filename

Configuring SCO UNIX for Printing with the OkiLAN 6120e

This application note describes the configuration of the printing system on the Santa Cruz Operation's (SCO) version of the UNIX operating system. For clarity and brevity, the following specific names will be used to represent general devices or concepts.

- **lj4** - The local queue name of the SCO system to which print jobs that are destined for a printer attached to the OkiLAN 6120e will be directed.
- **OKIPRINTER** - The host name of the *remote system* which is the OkiLAN 6120e. For example, to *telnet* to the OkiLAN 6120e and invoke the OkiLAN 6120e Configuration utility, you would type **telnet OKIPRINTER**. A host name is not required for the OkiLAN 6120e, the IP address may be used.
- **yourqueuename** - This is the name of the queue on the OkiLAN 6120e and must end with 1, 2, 3 or 4 depending on the port selected to service the print jobs.

If FF, LF or NF are the last two letters of the queue name, the job will be converted accordingly. See pages IV-15 and IV-16 for more information on remote queue names.

Prerequisites

Before you proceed, verify that the following prerequisites are met:

1. SCO TCP/IP version 1.2 or later must be installed.
2. The name of the OkiLAN 6120e (OKIPRINTER) and the IP address you wish to assign are in the "/etc/hosts" file of the SCO machine.
3. The IP address of the OkiLAN 6120e has been assigned and you are able to *telnet* to OKIPRINTER successfully.

Procedure

1. Login to the SCO machine as root.
2. Install Remote Line Printing or verify that it is running by typing **mkdev rlp** at the UNIX prompt. It will respond by asking if you want to install or remove remote line printing. Choose **Install** even if remote line printing may already be installed.
3. If remote line printing is already installed, **mkdev rlp** will respond with the message *Remote line printing working directory already exists. Do you wish to continue installing the remote line printing system?* Answer **no** to this prompt and skip to Step 6.

If remote line printing was not installed, **mkdev rlp** will respond with messages detailing files and directories that it is creating.

4. The command *mkdev rlp* will ask if you wish to change the printer description file “/etc/printcap”. Choose **no** for this prompt. It will respond saying *Run ‘etc/rlpconf’ to change the remote printer description file. Do NOT run ‘etc/rlpconf’*. We will be performing the functions of “/etc/rlpconf” manually.
5. The next prompt is *Do you want to start remote daemon now?* Answer **yes** to this prompt. This should bring you back to the UNIX prompt.
6. Using a text editor (such as vi), add the following entry to the “/etc/printcap” file”

```
lj4:\
:lp=:rm=OKIPRINTER:rp=pcl2:\
:sd=/usr/spool/lpd/lj4:\
:lf=/usr/spool/lpd/lj4/lj4.log:
```

7. At the UNIX prompt, type:
mkdir /usr/spool/lpd/lj4.
8. Type:
touch /usr/spool/lpd/lj4/lj4.log
9. Try printing to the OkiLAN 6120e by issuing the following command:

```
lp -d lj4 filename
```


IBM's AIX ver. 3.x for Printing with the OkiLAN 6120e

This application note describes the configuration of the printing system on IBM's AIX version 3.x of the UNIX operating system. The following specific names will be used to represent general devices or concepts.

- **lj4** - The local queue name on the AIX system to which print jobs that are destined for a printer attached to the OkiLAN 6120e will be directed.
- **OKIPRINTER** - The host name of the *remote system* which is the OkiLAN 6120e. For example, to *telnet* to the OkiLAN 6120e and invoke the OkiLAN 6120e Configuration utility, you would type **telnet OKIPRINTER**. A host name is not required for the OkiLAN 6120e, the IP Address may be used.
- **yourqueuename** - This is the name of the queue on the OkiLAN 6120e and must end with 1 or 2, depending on the port selected to service the print jobs.

If FF, LF or NF are the last two letters of the queue name, the job will be converted accordingly. See pages IV-15 and IV-16 for more information on remote queue names.

Prerequisites

Before you proceed, the name OKIPRINTER and the IP address assigned to the OkiLAN 6120e should be in the "/etc/hosts" file on the AIX system.

Procedure

To configure the AIX machine so that users can spool print jobs to the pcl2 print queue on the OkiLAN 6120e named OKIPRINTER, do the following:

1. Login to the AIX machine as root.
2. Invoke the **SMIT** utility by typing:

AIX> smit <enter>

3. To add a remote queue, select the following options from the *SMIT* menu:

- Spooler (Print Jobs and Printers)
- Manage Remote Printer Subsystem
- Client Services
- Remote Printer Queues
- Add a Remote Queue

A form appears asking you to define a remote print queue.

4. Enter information into the following fields as described. All other fields should use the default value.

- a) *NAME of queue to add* - **lj4**

This is the name of the local print queue.

- b) *DESIGNATION HOST for remote jobs* -
OKIPRINTER

This is the name of the OkiLAN 6120e. This host name must also be contained in the “/etc/hosts” file.

- c) *Name of QUEUE on remote printer* -
yourqueuename

- d) *NAME of device to add* - “**any arbitrary name**”

This is a device name required by AIX, but this name has no effect on the print service for the OkiLAN 6120e. Enter any name of seven characters or less. The name does not need to be an existing device, nor does it need to be unique.

5. Start the **lpd** subsystem with SMIT:

- Spooler (Print Jobs and Printers)
- Manage Remote Printer Subsystem
- Server Services
- lpd** Remote Printer Subsystem
- Start Using the **lpd** Subsystem
- Start BOTH Now and at System Restart

6. Start the qdaemon by typing:

```
AIX> startsrc -s qdaemon
```

7. Try printing to the printer attached to the OkiLAN 6120e by issuing the following command:

```
AIX> lpr -Plj4 filename
```

Configuring Solaris 2.x for Printing with the OkiLAN 6120e

This application note describes the configuration of the printing system on the Solaris ver. 2.x UNIX operating system. For clarity and brevity, the following specific names will be used to represent general devices or concepts.

- **lj4** - The local queue name on the Solaris system to which print jobs that are destined for a printer attached to the OkiLAN 6120e will be directed.
- **OKIPRINTER** - The host name of the *remote system* which is the OkiLAN 6120e. For example, to telnet to the OkiLAN 6120e and invoke the OkiLAN 6120e Configuration utility, you would type **telnet OKIPRINTER**. A host name is not required for the OkiLAN 6120e, the IP Address may be used.
- **yourqueuename** - This is the name of the queue on the OkiLAN 6120e and must end with 1, 2, 3 or 4, depending on the port selected to service the print jobs.

If FF, LF or NF are the last two letters of the queue name, the job will be converted accordingly. See pages IV-15 and IV-16 for more information on remote queue names.

Prerequisites

Before you proceed, the following prerequisites must be met:

1. The name OKIPRINTER and the IP address assigned to the OkiLAN 6120e are in the “/etc/hosts” file on the Solaris system.
2. Make sure the LPD daemon is running on the Solaris system.

Procedure

To configure the Solaris machine so users can spool print jobs to the *pcl* print queue on the OkiLAN 6120e named OKIPRINTER, do the following:

1. Login to the Solaris machine as root.
2. Type: **lpsystem -t bsd OKIPRINTER.**
3. Type: **lpadmin -p lj4 -s OKIPRINTER!yourqueueName - I any.**
4. Type: **accept lj4.**
5. Type: **enable lj4.**
6. Try printing by issuing the following command:
lp -d lj4 filename

Configuring Sun-OS v4.1.x or Ultrix v4.2 for Printing with the OkiLAN 6120e

This application note describes the configuration of the printing system on the Sun-OS ver 4.1.x and Ultrix ver. 4.2 of the UNIX operating system. For clarity and brevity, the following specific names will be used to represent general devices or concepts.

- **lj4** - The local queue name on the Sun-OS or Ultrix system to which print jobs that are destined for a printer attached to the OkiLAN 6120e will be directed.
- **OKIPRINTER** - The host name of the *remote system* which is the OkiLAN 6120e. For example, to telnet to the OkiLAN 6120e and invoke the OkiLAN 6120e Configuration utility, you would type **telnet OKIPRINTER**. A host name is not required for the OkiLAN 6120e, the IP Address may be used.
- **yourqueuename** - This is the name of the queue on the OkiLAN 6120e and must end with 1, 2, 3 or 4, depending on the port selected to service the print jobs.

If FF, LF or NF are the last two letters of the queue name, the job will be converted accordingly. See pages IV-15 and IV-16 for more information on remote queue names.

Prerequisites

Before you proceed, the following prerequisites must be met:

1. The name OKIPRINTER and the IP address assigned to the OkiLAN 6120e are in the “/etc/hosts” file on the Sun-OS or Ultrix system.
2. Make sure the LPD daemon is running on the Sun-OS or Ultrix system by issuing the following command at the UNIX prompt:

```
ps aux | grep lpd
```

If the LPD daemon is running, you should see output similar to:

```
root 135 0.0 0.0 52 0 ? IW May 24 0:01
/usr/lib/lpd
```

If the LPD daemon is not running, start the daemon by logging into the Sun-OS or Ultrix machine as root and issuing the following command at the UNIX prompt:

```
/usr/lib/lpd
```

Verify that the daemon is running by using the *ps* command described previously.

To start the LPD daemon automatically when the system boots, make sure that lines similar to the following exist in the “/etc/rc” file:

```
if [ -f /usr/lib/lpd ] ; then
rm -f /dev/printer/var/spool/lpd.lock
/usr/lib/lpd; echo -n ‘ printer’
fi
```

Procedure

To configure the Sun-OS or Ultrix machine so that users can spool print jobs to the pcl print queue on the OkiLAN 6120e named **OKIPRINTER**, do the following:

1. Login to the Sun-OS or Ultrix machine as root.
2. Using a text editor (such as vi), add this entry to the “/etc/printcap” file:

```
lj4:\
:lp=:rm=OKIPRINTER:rp=yourqueuenam:\
:sd=/usr/spool/lj4:\
:lf=/usr/spool/lj4/lj4.log
```

3. At the UNIX prompt, type: **mkdir /usr/spool/lj4**.
4. Type: **touch /usr/spool/lj4/lj4.log**.
5. Try printing by issuing the following command:

```
lpr -Plj4 filename
```

Appendix C

Internet Printing Protocol (IPP)

Internet Printing Protocol (IPP) is an application level protocol that can be used for distributed printing over the Internet. Using the new IPP protocol from any standard IPP client, you can print to any printer that is connected both to your OkiLAN 6120e and to the Internet.

With the OkiLAN 6120e, there is no configuration required. Enter the print server IPP URL as **http://xxx.xxx.xxx.xxx:631/ipp/portn**, where xxx.xxx.xxx.xxx is the IP address of the print server and portn is the output port number.

Example: http://198.60.248.120:631/ipp/port2.

Since IPP is a new industry standard, users are advised to check with the vendors of their operating systems for IPP client and IPP server software. Examples are Novell, Microsoft and EASYSOFTWARE for a generic version of a UNIX® CUPS® driver that supports the IPP protocol.

Section V:

LAN Manager/LAN Server

In This Section

Chapter 1 Introduction	V-3
Overview	V-3
System Requirements	V-3
Chapter 2 Installation	V-5
Overview	V-5
Network Preparation	V-5
Installing the Utilities Software	V-6
Running INSTALL	V-7
Running OkiNet for OS/2	V-7
Creating an OS/2 Printer	V-9
Printing a Configuration Sheet	V-10
Chapter 3 Printing in the OS/2 Environment	V-11
Overview	V-11
OS/2 1.3	V-11
OS/2 2.X and OS/2 Warp	V-11
DOS and WIN-OS/2	V-12
Chapter 4 Additional Utility Features	V-13
Overview	V-13
Deleting a Local Port	V-13
Configuring a Print Server	V-13
Configuring Parallel Port P1	V-14
Restoring Factory Defaults	V-15
Printing a Configuration Sheet	V-15
Chapter 5 Using HELP	V-16
Overview	V-16
General Help	V-16
Context-Sensitive Help	V-16
Appendix A Troubleshooting	V-17
No Configuration Sheet	V-17
Unable to Print	V-17

Chapter 1

Introduction

Overview

This section contains information about the OkiNet for OS/2 utility. This utility allows you to install and configure the OkiLAN 6120e for your specific environment. The utility provides configuration information and allows you to print a configuration sheet.

System Requirements

Please note the following system requirements:

Supported Environments

The OkiLAN 6120e is supported in the following operating environments:

- OS/2 version 1.3 with LAN Manager version 2.X
- OS/2 version 1.3 through 2.X with LAN Server version 2.X and 3.X
- OS/2 Warp 3.0 with LAN Server version 4.X

CSD Levels

IBM provides maintenance upgrades to OS/2 in the form of Corrective Service Diskettes (CSDs). We strongly recommend that you use the most recent CSDs available, because the CSDs include fixes to the OS/2 print subsystem. Contact IBM at 800-342-6672 for information about recent CSDs.

Client Nodes

A printer connected to the network can be accessed from DOS and other network nodes properly configured as LAN Manager/LAN Server client nodes.

You should be familiar with the OS/2 Print Management utilities. See your OS/2 manuals for more information.

DLC/802.2 Protocol Stack

The DLC/802.2 protocol stack must be loaded and running on the file server from which the OKI Network Printer Redirector will run. With LAN Manager, this means you must enable the remote boot facility. With LAN Server, you must select the 802.2 protocol when you run the installation utility. See your LAN Manager/LAN Server documentation for more information.

Routers

The 802.2 Type I network protocol used by the OKI Network Printer Redirector cannot be routed by routers which operate on specific protocols at the network layer. See your router documentation for more information.

Chapter 2

Installation

Overview

To install the OkiLAN 6120e:

1. Install the OkiNet for OS/2 utilities software.
2. Run the OkiNet for OS/2 utility to add a local printer port.
3. Associate a print queue with the new local printer port.

Once the installation is complete, you can verify communication by printing a configuration sheet.

Network Preparation

- You must have network administrator privileges to install the OkiLAN 6120e.
- You must have physical access to an OS/2 file server to host the OKI software utilities.
- Write down the serial number and the Ethernet address of your OkiLAN 6120e.
- OS/2 and LAN Manager/LAN Server must be configured with the following protocol:
 - DLC/802.2 protocol stack
- LAN Manager users must enable the remote boot facility.
- LAN Server 2.X users must run the LAN Server installation utility and select the 802.2 protocol.
- LAN Server 3.0 users must run the LAPS utility and select the 802.2 protocol.
- OS/2 Warp Users must run the MPTS utility and select the 80w.w protocol. See your network administrator or the LAN Manager/LAN Server manuals for instructions.

- The initial installation requires the file server to be brought down and then back up again. This may be a consideration when you are planning your install.

Depending on your current configuration, the following software may also be needed:

- Printer driver installation diskettes. These diskettes are provided with the OS/2 operating system or are available from the printer manufacturer.
 - LAN Manager or LAN Server installation diskettes.
-

Note: It is strongly recommended that you make backup copies of the OS2.INI and OS2SYS.INI files before you install the OkiLAN 6120e. Follow the directions in your OS/2 documentation to back up these files.

Installing the Utilities Software

Two software utilities are provided with the OkiLAN 6120e: INSTALL and OkiNet for OS/2.

Install

The INSTALL utility copies both software utilities to your OS/2 server and registers the OKI application with the OS2.INI file. You will need to run INSTALL one time only.

OkiNet for OS/2

The OkiNet for OS/2 utility completes the initial installation of the OkiLAN 6120e. In addition, you can run the utility as needed to modify the configuration of the OkiLAN 6120e or to view port information.

Note: The directory where OKI DLL files install, c:\OS2\DLL, must be the first entry in the LIBPATH command located in the CONFIG.SYS file. When you reboot the system, the OS/2 spooler will load the OKI Network Printer Redirector.

Running INSTALL

1. Login to the server with administrator privileges.
If you are reinstalling the utility, disable the spooler before running install. If this is the first time you have installed the utility, disabling the spooler is optional.
2. From the OS/2 command line, change to the OS/2 directory.
3. Check the README file for current installation notes.
4. Type **INSTALL** and press **Enter**.
5. Verify the install directories are correct.
6. Select **INSTALL** to proceed. When the utilities are installed, you will see a message indicating that the installation was successful.
If the install was not successful read through the comments in the *Install Progress* window for errors and recommended action.
7. Select **Exit**.

Completing the Installation

After the OKI software has been installed, you must do the following:

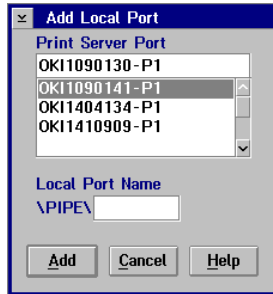
1. Verify the OS/2 spooler is enabled.
2. Verify /OS2/DLL is first in the LIBPATH statement in the CONFIG.SYS file.
3. Shut down and restart the OS/2 file server.
4. Run the OkiNet for OS/2 utility to add local ports.

Running OkiNet for OS/2

Before you can print via the OkiLAN 6120e, you must first add a local printer port to your OS/2 server.

1. Select the **Network Printing Tools** folder on the OS/2 desktop or in the Desktop Manager.
2. Select the **OkiNet for OS/2** utility icon.

3. Select **OK**. The Print Server Status Screen will display. From the *Configure* menu, select **Add Local Port**.



4. Select a print server and port.
Print servers are identified by serial number. (You will find the serial number for your OkiLAN 6120e on the enclosure.) The port is indicated by P1, P2, P3, or P4. Use the arrow buttons to scroll through the available print servers on the network.
5. Enter a local port name. Highlight the entry field labeled *Local Port Name*, and enter a name that will help you identify the local printer port.
The name must begin with “\PIPE\”, which is provided by default. It can be up to eight characters long (excluding “\PIPE\”) and must follow OS/2 file naming conventions.
6. Select **Add**. Selecting **Cancel** exits without adding a local printer port.
7. Repeat these steps for all print server ports you are configuring.
8. Exit OkiNet for OS/2.

Creating an OS/2 Printer

To print to the local port created by OkiNet for OS/2, you must create an OS/2 printer.

OS/2 1.3

1. Open the *Print Manager* from the desktop.
2. Select **SETUP** from the menu.
3. Select **Printers**. This will display a list of printers currently configured on this server.
4. Select **Add**. A dialog box will display, defining the configuration for a new printer.
5. Configure the printer as you would configure a directly-attached printer. Set the device field to the local port name you created in OkiNet for OS/2.

Use the *Print Manager* to attach queues to the printer you just created. Refer to your OS/2 documentation for more information on these operations.

OS/2 2.X and OS/2 Warp

1. Drag a printer object from the templates folder to the desktop on the server. This action will display a configuration window.
2. Enter the name of the printer, the default printer driver and the output port. For the Output Port, select the icon for the local port name you created in OkiNet for OS/2.

For more information on these operations, refer to your OS/2 documentation.

Printing a Configuration Sheet

You can verify communication by printing a configuration sheet using OkiNet for OS/2.

1. Select **Configure** from the main Print Server window.
2. Select **Configure Print Server**.
3. Select the OkiLAN 6120e you would like to test.
4. From the options, select **Print Configuration Sheet**.
5. Click the **Configure** button.

Note: In order for the configuration sheet to print correctly, the OkiLAN 6120e must determine if the connected printer is a text, PCL, or PostScript printer. The default is text. If the connected printer is a PostScript-only printer, you will have to reconfigure the OkiLAN 6120e to print the configuration sheet in PostScript. The configuration sheet will print to all connected printers.

A configuration sheet will print automatically if the OkiLAN 6120e fails due to a network protocol error.

Chapter 3

Printing in the OS/2 Environment

Overview

OS/2 provides several methods for selecting a printer from within an application. The best method to use depends on the specific application. The following methods are provided as simple examples for different environments within OS/2.

Note: The following examples will work on any OS/2 machine on the network, provided that the proper network privileges and protocols have been observed.

OS/2 1.3

To specify a queue as the default for your system, do the following:

1. Select **Print Manager**.
2. Select **SETUP**.
3. Select **Application Defaults**.
4. Change the default print queue to the print queue associated with the OkiLAN 6120e.

OS/2 Presentation Manager applications which use the default printer will now print to the OkiLAN 6120e printer.

OS/2 2.X and OS/2 Warp

To specify the printer attached to the OkiLAN 6120e as the OS/2 default printer, do the following:

1. From the desktop, right-click on any printer icon.
2. Select the right arrow next to *Set Default*. A list of print queues defined for your system will display.

3. Select the print queue associated with the OkiLAN 6120e.

OS/2 applications that use the default printer will now print to the printer attached to the OkiLAN 6120e.

The OS/2 print screen function uses the OS/2 default printer. This function is invoked when you press the **Print Screen** key while on the desktop, in an OS/2 window, or when you are running an OS/2 application.

4. Press **Print Screen** on your keyboard. A copy of your screen will appear on the appropriate printer.

DOS and WIN-OS/2

DOS and WIN-OS/2 do not observe the OS/2 Presentation Manager default printer setting. Both DOS and WIN-OS/2 applications typically use LPT1 as the default printer. To use the newly defined print queue as a DOS or WIN-OS/2 printer, you must assign a DOS or WIN-OS/2 device name to the desired queue.

Example:

If the OkiLAN 6120e is installed on a server named SERVER 1 and assigned the queue name MPXLPT, the following command issued from an OS/2 command prompt would reassign LPT1:

```
C>NET USE LPT1 \\Server1\MPXLPT
```

If OS/2 does not recognize the network name, enter the following command from an OS/2 prompt on the server where the software utilities were installed:

```
C>NET SHARE MPXLPT /PRINT
```

Any applications using LPT1 will now print to the OkiLAN 6120e.

Chapter 4

Additional Utility Features

Overview

You can run the OkiNet for OS/2 utility at any time to access the following optional features:

- Deleting a Local Port
- Configuring a Print Server

Deleting a Local Port

The delete command allows you to delete a local port that has been previously added.

1. Verify the local port is not attached to an OS/2 printer queue. The local port cannot be deleted if it is attached to an OS/2 printer queue.
2. Login to the server with administrator privileges and run OkiNet for OS/2.
3. Click **OK**.
4. From the Configure menu, select **Delete Local Port**.
5. From the *Delete Local Port* screen, use the scroll arrows to select and highlight the local port you wish to delete.
6. Select **Delete**. The Cancel button exits the screen without deleting the port.

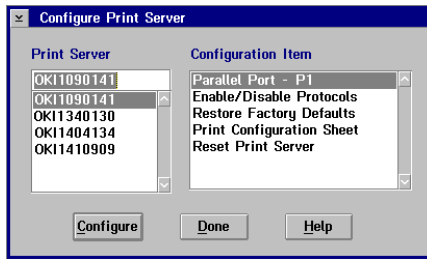
To add additional local ports, follow the *Running OkiNet for OS/2* instructions on page VI-8.

Configuring a Print Server

OkiNet for OS/2 allows you to change the default configuration of the OkiLAN 6120e. These configuration settings are retained when the OkiLAN 6120e is powered off.

1. Login to the server with administrator privileges and run OkiNet for OS/2.
2. Click **OK**.

3. From the *Configure* menu, select **Configure Print Server**. The following screen will display:



The OkiLAN 6120e will reset by selecting **OK** to save any of the options, except the *Print Configuration Sheet* option.

Configuring Parallel Port P1

Ports P1 must be configured based on the printer you intend to use.

1. From the *Configure Print Server* window, choose a print server from the list at left.
2. Select **Parallel Port-P1** from the list at right and then click the **Configure** button.
3. Click **OK** when you have selected the appropriate settings. The configuration settings will be stored in the OkiLAN 6120e and will be retained even when the OkiLAN 6120e is powered off.

CAUTION: If you change the configuration while a job is printing, the job may not print successfully.

Configuration option for parallel Port P1 and P2:

- ***Configuration page print language*** - The factory default is TEXT. If your OkiLAN 6120e is attached to a PostScript or PCL printer, enable the appropriate selection. The OkiLAN 6120e configuration sheet will be printed in the language you select. This setting only affects the configuration sheet, not other print jobs.

Restoring Factory Defaults

The Restore Defaults option restores the factory default settings for the LAN Manager/LAN Server protocol and output ports. To restore factory defaults, select an OkiLAN 6120e from the list on the left. Then select **Restore Factory Defaults** from the list on the right. Click the **Configure** button.

***CAUTION:** If you restore the factory default settings while a job is printing, the job may not print successfully.*

Printing a Configuration Sheet

To print a configuration sheet, select an OkiLAN 6120e from the print server list on the left. Then select **Print Configuration Sheet** from the list on the right. Click the **Configure** button. A configuration sheet will print to each printer.

Note: In order for the configuration sheet to print correctly, the OkiLAN 6120e must determine if the connected printer is a text, PCL, or PostScript printer. The default is TEXT. If the connected printer is a PostScript-only printer, you must configure the OkiLAN 6120e to print the configuration sheet in PostScript.

The configuration sheet will print automatically if the OkiLAN 6120e fails due to a network protocol error.

Chapter 5

Using Help

Overview

The OkiNet for OS/2 utility provides both general and context-specific help.

General Help

To access help information about installation and configuration, select **Help** from the main menu, then select **General Help**.

To access help information about a specific topic, select **Help** from the main menu, then select **Help Index**.

See your OS/2 manual for information on using on-line help.

Context-Sensitive Help

Context-sensitive help is available from many areas of OkiNet for OS/2.

Several of the configuration windows have help buttons which, when selected, provide information about that specific window.

Appendix A

Troubleshooting

No Configuration Sheet

If the LED turns solid orange due to a network protocol error and no configuration sheet is printed, your printer may be configured for PostScript operation. If so, you must re-configure your printer for standard ASCII text mode so that the configuration sheet can be printed. See your printer manuals for more information.

Unable to Print

If the OkiLAN 6120e passes self-test, but you are unable to send data to the printer via the OkiLAN 6120e, you may want to check the following:

- Printer configuration
- Printer hardware
- Computer network adapter cards
- Cabling and/or connectors application software configuration
- Cable adapters
- OkiLAN 6120e port configuration

Section VI:

Windows Printing

In This Section

Chapter 1 OkiLAN 6120e Set Up for Windows NT 4.0/2000	VIII-3
Overview	VIII-3
OkiLAN 6120e Connect for IP	VIII-3
OkiLAN 6120e Connect for DLC	VIII-5
Using the Windows NT 4.0 LPR Print Monitor	VIII-6
Chapter 2 OkiLAN 6120e Set Up for Windows 95/98	VIII-10
Overview	VIII-10
OkiLAN 6120e Connect for TCP/IP	VIII-10
OkiLAN 6120e Connect for DLC	VIII-12
Output Port Configuration Options	VIII-14
Enabling/Disabling	VIII-14

Chapter 1

OkiLAN 6120e Set Up for Windows NT 4.0/2000

Overview

This section contains instruction and information on how to set up your OkiLAN 6120e for a Windows NT 4.0/2000 environment. Print options for Windows NT 4.0/2000 include:

- OkiLAN 6120e Connect for IP
- OkiLAN 6120e Connect for DLC
- LPR

OkiLAN 6120e Connect for IP

OkiLAN 6120e Connect for TCP/IP is a full featured utility that allows simple, direct, TCP/IP printing from your computer to a printer attached to an OKI TCP/IP enabled print server. OkiLAN 6120e Connect has advantages over other TCP/IP printing options. It allows you to print to print servers that are using Dynamic IP addresses (DHCP). It will also notify you immediately in the event of a printer error (e.g. Paper out). Print jobs printed through OkiLAN 6120e Connect are sent directly to the OkiLAN 6120e print server and not routed through a network server, resulting in a reduction of network traffic.

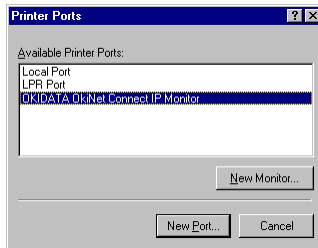
System Requirements

To use OkiLAN 6120e Connect for TCP/IP for your Windows NT 4.0/2000 operating system, your computer must be configured to run TCP/IP. The OkiLAN 6120e print server must also be configured to run TCP/IP.

Installation

To install OkiLAN 6120e Connect for TCP/IP, follow the instructions below:

1. Install the OkiLAN 6120e Connect for TCP/IP files - see Section I.
2. When installation is complete, click on **Start, Settings** and then **Printers**.
3. Select the Windows printer from which you would like to print with the OkiLAN 6120e Connect, then select **Properties** from the menu.
4. Add an OkiLAN 6120e Connect port. This may be done by selecting **Add Port** under the *Ports* tab.
5. From the list of *Available Printer Ports*, select **OKI OkiLAN 6120e Connect IP Monitor** as the type of port to add and click **New Port**.



You will enter into the *Add OkiLAN 6120e Connect Port* screen where there will be a list of all OkiLAN 6120e print servers available on the local subnet.

6. If the port you wish to add is listed in the *Ports available on local subnet*: window, select the port name and click **Add**.

If the port you wish to use is not listed, click the **Locate non-local device** button and enter the *Static IP Address* used for the print server. Click the **Add** button.

Note: The OkiLAN 6120e Connect DHCP discovery feature will relocate a print server on the local subnet by its port name, even if the IP address changes. This feature is enabled on the local subnet only. A non-local print server will not be re-discovered if the IP address changes.

7. Click **OK**.

You will now be able to use OkiLAN 6120e Connect for TCP/IP. Whenever you print to the printer configured with OkiLAN 6120e Connect, your print job will go directly to the OkiLAN 6120e print server port.

Notify When Printed

This feature will provide an alert when your job is active on the printer. This may be useful if the printer is especially busy.

Description

An optional field where you may list the location or other useful information about the printer port.

OkiLAN 6120e Connect for DLC

OkiLAN 6120e Connect for Data-Link Control (DLC) provides a direct printing solution for users in Microsoft Windows NT serverless environments with the DLC/LLC protocol. Print jobs printed through OkiLAN 6120e Connect are sent directly to the OkiLAN 6120e print server and not routed through the network server, resulting in a reduction of network traffic. OkiLAN 6120e Connect for DLC can be used to configure the print server, obtain status from the print server and printer, and send jobs to the printer.

Note: To obtain a version of OkiLAN 6120e Connect for DLC that supports Windows NT, visit our FTP site (<ftp://ftp.extendsys.com/pub/printserver/utilities/>) or contact Technical Support.

Configure Port

If you have printing problems while using the OkiLAN 6120e Connect printing port, you may check the status of the port by selecting **Configure Port** under the *Ports* tab in the *Properties* screen.

Notify On Printer Error

This feature will check the printer status prior to printing the job. If a printer error is detected (e.g. printer off-line or out of paper) the error description will be given.

Notify When Printed

This feature will provide an alert when your job is active on the printer. This may be useful if the printer is especially busy.

Description

An optional field where you may list the location or other useful information about the printer port.

Using the Windows NT 4.0 LPR Print Monitor

A Microsoft LPR print monitor is shipped with Windows NT 4.0. This print monitor is not included in the default Windows NT installation; therefore, it will need to be installed. In order to set up an LPR printer in Windows NT 4.0, the system must have an IP address, the print server must have an IP address, and Microsoft TCP/IP printing must be installed.

System Requirements

- Administrator privileges
- Windows NT installation disks or CD

Install TCP/IP on NT Server

If Microsoft TCP/IP has not been installed on the Windows NT print server, follow the steps below:

1. Open the Windows NT **Control Panel**.
2. Double-click the **Network** icon.
3. Select the *Protocols* tab.
4. Select **TCP/IP Protocol** and click the **Properties** button.
5. Assign the server an IP address (for LANs without Internet access, it is suggested to use 10.10.10.1). Click **OK**.

Install LPR Print Monitor

1. Open the Windows NT **Control Panel**.
2. Select the *Services* tab.
3. Select **Add**, then **Microsoft TCP/IP printing**.
4. Click the **Close** button.
5. Restart the system.

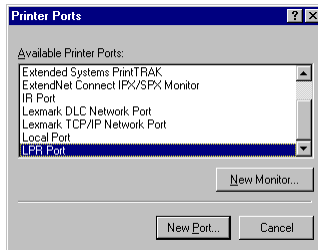
Assign Print Server IP Address

1. Using *OkiNet for IP*, assign the print server an IP address; for example, 10.10.10.2.

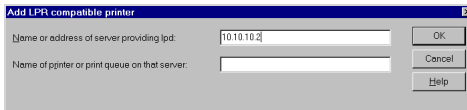
Note: For more information on using OkiLAN 6120e TCP/IP, see *OkiNet for TCP/IP*.

Add LPR Printer

1. Open the **Control Panel**, Printers and then select **Add Printer**.
2. Select **My Computer** and click **Next**.
3. Click the **Add Port** button.
4. On the *Printer Ports* screen, select **LPR Port** from the list of *Available Printer Ports* and click the **New Port** button.

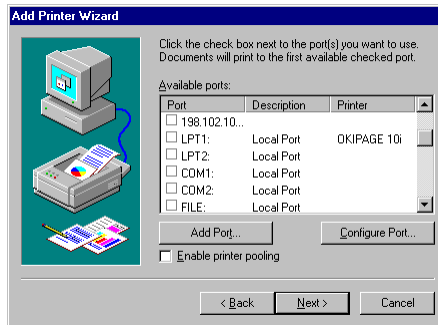


5. In the *Name or address of server providing lpd:* field, enter the IP address you assigned to the printer.



6. In the *Name of printer or print queue on that server:* field, enter the print server **output port** being used. For example, for port 1 enter **P1**, for port 2 enter **P2**, etc. Click **OK**.
7. Click **OK**.

8. Verify the port just added is selected and then click **Next**.



9. Select a printer driver and click **Next**.
10. Enter a name for the printer and click **Next**.
11. To share the printers with others on the network, select **Shared** and enter a share name for the printer.

Chapter 2

OkiLAN 6120e Set Up for Windows 95/98

Overview

This section contains instruction and information on how to set up your OkiLAN 6120e for a Windows 95/98 environment. Print options for Windows 95/98 include:

- OkiLAN 6120e Connect for TCP/IP
- OkiLAN 6120e Connect for DLC
- OkiLAN 6120e Connect for IPX/SPX

OkiLAN 6120e Connect for TCP/IP

OkiLAN 6120e Connect for TCP/IP is a full featured utility that allows simple, direct, TCP/IP printing from your computer to a printer attached to an OKI TCP/IP enabled print server. With OkiLAN 6120e Connect, you can even print to print servers using Dynamic IP addresses (DHCP). Print jobs printed through OkiLAN 6120e Connect are sent directly to the OkiLAN 6120e print server and not routed through the network server, resulting in a reduction of network traffic.

System Requirements

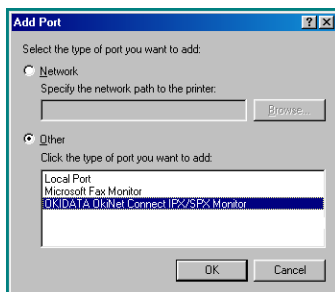
To use OkiLAN 6120e Connect for TCP/IP, your operating system must be Windows 95/98 and your computer must be configured to run TCP/IP. The OkiLAN 6120e print server must also be configured to run TCP/IP.

Installation

To install OkiLAN 6120e Connect for TCP/IP:

1. Install the OkiLAN 6120e Connect for TCP/IP-see Section I.
2. When installation is complete, click on **Start**, **Settings** and then **Printers**.

3. Select the Windows printer from which you would like to print with OkiLAN 6120e Connect, then select **Properties** from the *File* menu.
4. Add an OkiLAN 6120e Connect port. This may be done by selecting **Add Port** under the *Details* tab.
5. In the *Add Port* window, select the radio button labeled **Other** and then select **OKI OkiLAN 6120e Connect IP Monitor** as the type of port to add.



6. Click **OK**.

You will enter into the *Add OkiLAN 6120e Connect Port* screen where there will be a list of all OkiLAN 6120e print servers available on the local subnet.

7. If the port you wish to add is listed in the *Ports available on local subnet* window, select the port name and click the **Add** button.

If the port you wish to use is not listed, click the **Locate non-local device** button and enter the *Static IP Address* used for the print server. Click the **Add** button.

Note: The OkiLAN 6120e Connect discovery feature will relocate a print server by the port name, even if the IP address changes. This feature is enabled on the local subnet only. Non-local print servers will not be re-discovered if the IP address changes.

8. Click **OK**.

You will now be able to use OkiLAN 6120e Connect for TCP/IP. Whenever you print to the printer configured with OkiLAN 6120e Connect, your print job will go directly to the OkiLAN 6120e print server port.

Port Settings

If you have printing problems while using the OkiLAN 6120e Connect printing port, you may check the status of the port by selecting **Port Settings** under the *Details* tab in the *Properties* screen.

OkiLAN 6120e Connect for DLC

OkiLAN 6120e Connect for Data-Link Control (DLC) provides a direct printing solution for users in Microsoft Windows 95/98 serverless environments with the DLC/LLC protocol. Print jobs printed through OkiLAN 6120e Connect are sent directly to the OkiLAN 6120e print server and not routed through the network server, resulting in a reduction of network traffic. OkiLAN 6120e Connect for DLC can be used to configure the print server, obtain status from the print server and printer, and send jobs to the printer.

System Requirements

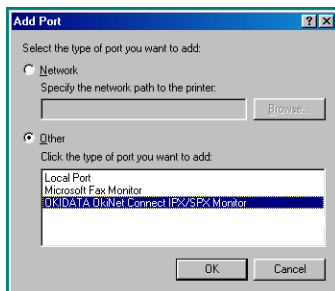
To use OkiLAN 6120e Connect for DLC, your operating system must be Windows 95/98 and the Microsoft 32-bit DLC protocol must be installed.

Installation

To install OkiLAN 6120e Connect for DLC, follow the instructions below:

1. Install OkiNet for DLC — see Section I.
2. When the installation is complete, click on **Start, Settings** and then **Printers**.
3. Select the printer driver from which you would like to print with OkiLAN 6120e Connect, then select **Properties** from the *File* menu.
4. Add an OkiLAN 6120e Connect port. This may be done by selecting **Add Port** under the *Details* tab.

- In the *Add Port* window, select the radio button labeled **Other** and select **OKI OkiLAN 6120e Connect DLC Monitor** as the type of port to add.



- Click **OK**.

You will enter into the *Add OkiLAN 6120e Connect Port* screen where there will be a list of all OkiLAN 6120e print servers available on the local subnet.

- Select the OkiLAN 6120e print server port name and click the **Add** button.
- Click **OK**.

You will now be able to use OkiLAN 6120e Connect for DLC. Whenever you print to the printer configured with OkiLAN 6120e Connect, your print job will go directly to the OkiLAN 6120e print server port.

Port Settings

If you have printing problems while using the OkiLAN 6120e Connect printing port, you may check the status of the port. Select the **Details** tab on the *Properties* screen and then click the **Port Settings** button.

For more configuration options, click the **Configure** button.

Output Port Configuration Options

To configure the OkiLAN 6120e output port, select the *Output Port* tab.

Port Number

Select the port number you wish to configure.

Configuration Page Language

Select the appropriate printer language for printing and configuration pages on your printer.

Enabling/Disabling

To enable or disable protocols on the OkiLAN 6120e, select the *Protocols* tab. Select each protocol you wish to enable. If you disable a protocol, the OkiLAN 6120e will no longer communicate using that protocol.

Section VII:

OkiView 32

In This Section

Chapter 1 Introduction VII-3

OkiView 32 Installation Requirements VII-3

Chapter 2 OkiView 32 Printer Panel VII-4

OkiView 32 Printer Properties Menu VII-4

Changing the Printer's Name and Location VII-6

OkiView 32 Discovery Preferences VII-6

Chapter 1

Introduction

The OkiView 32 Utility provides a simple, quick way of viewing the status of all brands of network printers on Microsoft/Novell networks, as well as configuring and maintaining Oki network printers on those networks. The main screen contains the OkiView Printer List of network printers, and provides the starting point to select and manage print devices from Windows 95, 98, NT and 2000 workstations on the network.

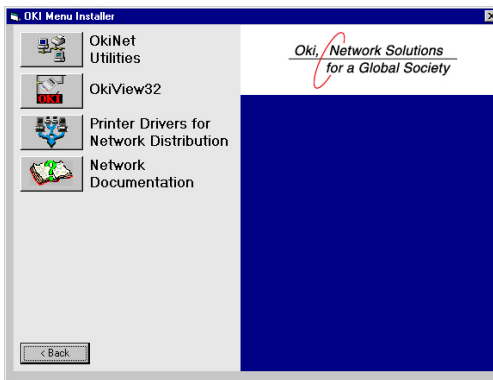
This section gives a summary of OkiView 32's features. For more details, see the OkiView on-line Help.

Please note that not all OkiView 32 features may be supported by the particular OKI printer or OkiLAN print server model which you are using. For example, the OkiLAN 6120e does not support the NetBEUI protocol.

OkiView 32 Installation Requirements

Note: Novell's Client for Windows 95/98, NT or 2000 is required for OkiView 32. Microsoft Client is required only for configuring Novell using a Microsoft network.

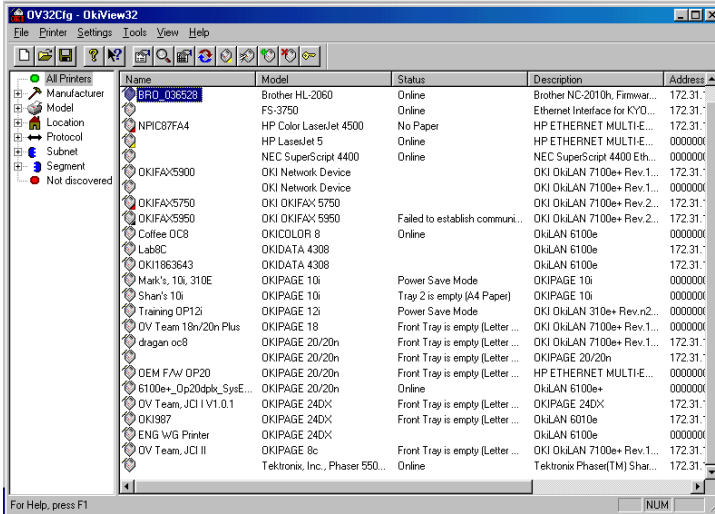
1. Click the **OkiView 32** button on the *OKI Menu Installer* screen.



2. Follow the online instructions to complete installation.

Chapter 2

OkiView 32 Printer Panel



The Printer Panel is the OkiView 32 main display. The display is divided into two smaller panels: the Printer Filters Panel and the Printer Information Panel. The Printer Information Panel, on the right hand side of the main display, shows a list of all the printers currently available for status and configuration. Printer name and status information is detailed to the right of the printer icon.

OkiView 32 Printer Properties Menu

The Printer Properties menu allows you to get detailed status information and to configure printers. To enter the Printer Properties menu:

- 1 Select a printer on the Printer Information Panel.
- 2 From the Printer menu, click **Printer Properties**, or click the **Printer Properties** icon, or double-click on the selected printer.

Note: Modification of printer options (print quality, page setup, paper source, etc.) is not available for Internet FAX and non-Oki printers.

Status

The Status screen is reached from the Printer Properties menu. This screen displays descriptive information about the printer, as well as its online/offline status and the status text displayed on the printer's front panel.

Network Property Page

The Network Property Page is reached from the Printer Properties menu. This screen allows you to configure the network protocol, network frames, and SNMP traps events and destination addresses. Information includes:

- Protocols
 - TCP/IP
 - NetWare
 - AppleTalk
 - NetBEUI
 - Lan Manager
 - Banyan VINES
- Frame Types
- SNMP Traps

Novell Configuration

Note: This screen is only available when Novell's Client for Windows 95/98, NT or 2000 is installed.

The Novell Configuration screen is reached from the Printer Properties menu. This screen allows you to configure Novell NetWare without accessing standard DOS-based NetWare utilities such as Pconsole.

The Novell Configuration screen is separated into two panels:

Novell List Panel

This panel displays the following information:

- QueueServer/PServer in bindery mode
- QueueServer/PServer in NDS mode
- Remote Printer/NPrinter mode

Novell Information Panel

This panel allows you to change the settings displayed in the Novell List Panel.

Changing the Printer's Name and Location

- 1 Select a printer on the Printer Information Panel.
- 2 From the Printer menu, click Printer Properties.
- 3 Change the text in the name and/or location fields.
- 4 Click OK.

OkiView 32 Discovery Preferences

This screen allows the user to customize these settings:

- Network Protocols—sets which protocol (TCP/IP or NetWare) is used to discover a network printer.
- TCP/IP Subnets—allows you to search one or more subnets to discover a network printer.
- IPX/SPX Segments—allows you to search one or more NetWare segments to discover a network printer.
- Printer Refresh Polling Interval—sets the rate at which OkiView 32 polls the network for new print jobs.

Section VIII:

Regulatory Information

Federal Communications Commission Radio Frequency Interference Statement

This equipment generates and uses radio frequency energy. If not installed and used according to the manufacturer's instructions, this equipment may cause interference with radio/TV reception.

The Federal Communications Commission has established technical standards regarding radio frequency energy emitted by computing devices.

This equipment complies with Part 15 of the FCC Rules, subject to the following conditions: This device may not cause harmful interference; and it must accept any interference received, including interference that may cause undesired operation.

There is no guaranteed that interference will not occur in a particular installation. If you suspect that this equipment is interfering with radio/TV reception try the following:

- While observing the interference, turn the suspect equipment off and back on. If the interference stops when you turn the equipment off, and starts again when you turn the equipment on, the equipment is probably the source of your problem.
- Connect the equipment and the receiver to different electrical outlets.
- Increase the distance between the equipment and the receiver.
- Reorient or relocate the receiving antenna.
- Consult your dealer or an experienced radio/TV technician for additional advice.

OKI is not responsible for radio/TV interference caused by using unauthorized cables or by making unauthorized changes to this equipment.

Index

A

- Advanced Management
 - Features
 - network alert, II-18
 - OkiNet for TCP/IP, II-19
 - printer security for TCP/IP Printing, II-19
 - security, II-5
 - Advanced management
 - Features
 - OkiNet for NDS, II-19
- Assigning an IP Address
 - BOOTP, IV-11 to IV-12, IV-57 to IV-59
 - DHCP, IV-10
 - gleaning, IV-9
 - RARP, IV-11 to IV-12, IV-60 to IV-62
 - static route entry, IV-11

B

- Bindery Settings
 - in NetWare, III-8
- BOOTP
 - assigning an IP address, IV-11 to IV-12, IV-57 to IV-59
 - troubleshooting, IV-50, IV-51
- BOOTP Server
 - starting in OkiNet for TCP/IP, IV-41
- BSD-Style Print Queue
 - configuring in TCP/IP, IV-17 to IV-18

C

- Choosing a TCP/IP IP address, IV-7
- CLC/802.2 Protocol Stack, V-4
- Client Nodes, V-3
- Configuration Sheet
 - printing
 - NetWare, III-17
 - TCP/IP, IV-34
 - troubleshooting in TCP/IP, IV-54
- Configuration Sheet Printing, LAN Manager/LAN Serv, V-10
- Configuring for TCP/IP Network Printing, IV-15
- Creating an OS/2 Printer LAN Manager/LAN Server, V-9
- Custom Views
 - creating
 - in OkiNet for NetWare, III-19
 - in OkiNet for TCP/IP, IV-36
 - in TCP/IP, II-19

D

- Default Gateway IP Address
 - identifying in telnet, IV-46
- DHCP
 - assigning an IP address, IV-10
- Diagnostic Information
 - displaying in NetWare, III-17
- DLC/802.2 Protocol Stack, V-4

E

- Enabling/Disabling Protocols
 - OkiNet for NetWare, III-17
 - OkiNet for TCP/IP, IV-32
- Error Messages
 - TCP/IP hardware, IV-53

F

- FCC Statement, VIII-2
- Federal Communications Commission Statement, VIII-2
- FTP Printing
 - ASCII, IV-20
 - BINARY, IV-20
 - BYE, IV-20
 - CLOSE, IV-20
 - IMAGE, IV-20
 - MODE, IV-20
 - MPUT, IV-19
 - OPEN, IV-20
 - PUT, IV-19
 - QUIT, IV-20
 - SEND, IV-19
 - STRU, IV-20
 - TYPE, IV-20
- FTP Troubleshooting, IV-49 to IV-55

G

- GET Community Name (TCP/IP), IV-31
- Gleaning, Assigning an IP Address, IV-9

H

- HP-UX v10.xx Application
 - prerequisites, IV-67
 - procedure, IV-68
- HP-UX v8.07 Application
 - prerequisites, IV-63 to IV-64
 - procedure, IV-64 to IV-66
- HP-UX v9.xx Application
 - Prerequisites, IV-67
 - procedure, IV-68 to IV-69

I

- IBM AIX ver. 3.x Application
 - prerequisites, IV-75
 - procedure, IV-75 to IV-77
- INSTALL, LAN Manager/LAN Server
 - installation, V-7
 - running the utility, V-7
- IP Address
 - assigning
 - BOOTP, IV-11 to IV-12
 - DHCP, IV-10
 - gleaning, IV-9
 - RARP, IV-11 to IV-12
 - static route entry, IV-11
 - choosing, IV-7

J

- JetAdmin Support, II-6 to II-7
 - AppleTalk configuration, II-7
 - NetWare configuration, II-6 to II-7
 - obtaining diagnostic information, II-7
 - TCP/IP configuration, II-7

L

- LAN Manager/LAN Server
INSTALL, V-7
- Language Switching
NetWare, III-11 to III-12

N

- NDPS,, III-33
- NDS Settings in NetWare, III-9
- NPrinter Mode in NetWare,
III-5

O

- OkiLAN 6120e Diagnostic
Information
 - displaying in OkiNet for
TCP/IP, IV-34
- OkiNet Connect
 - for DLC, VI-12 to VI-13
 - for TCP/IP, VI-3 to
VI-5, VI-10 to VI-12
- OkiNet for NDS, III-24 to III-32
 - adding or removing the
print serv, III-31
 - configuring the OkiLAN
6120e, III-31
 - creating a new OkiLAN
6120e object, III-28
 - installing, III-27
 - printing with an OkiLAN
6120e print server, III-29
to III-30
- OkiNet for NetWare
 - configuration options, III-7
 - customized views, creating,
III-19
 - enabling/disabling proto-
cols, III-17
 - NetWare queues configura-
tion options, III-9
 - output port configuration
options, III-11 to III-13
 - port configuration options,
III-10
 - resetting the OkiLAN
6120e, III-17
 - restoring factory default
settings, III-18
 - running the utility, III-7
 - searching for a specific
OkiLAN 6120e, III-19
 - SNMP access information,
III-22 to III-23
 - view settings, modifying,
III-20 to III-22
- OkiNet for OS/2
 - configuring a print server,
V-13 to V-14
 - deleting a local port, V-13
 - running the utility, V-7 to
V-8
- OkiNet for TCP/IP
 - running the utility, IV-24
 - starting a BOOTP server,
IV-41
 - troubleshooting, IV-49 to
IV-55
- OkiNet Utilities
 - introduction, I-11
- OkiView 32, I-11, I-14, VII-3
- OS/2 Printer, Creating, V-9

Output Port Configuration
Options
in NetWare, III-11 to III-13
in TCP/IP, IV-28 to IV-30

P

Port Configuration
in NetWare, III-10
Print Queue, Configuring
BSD-Style, IV-17 to IV-18
Print Server Class, Adding or
Removing in OkiNet f, III-31
to III-32
Printer Traps in TCP/IP, IV-33
Printing
in the OS/2 environment,
V-11 to V-12
OkiLAN 6120e
connect for DLC, VI-12
connect for TCP/IP,
VI-3, VI-10, VI-10 to
VI-12
PServer Mode in NetWare, III-5

Q

Queues, NetWare configura-
tion options, III-9

R

RARP
assigning an IP address,
IV-11 to IV-12, IV-60 to
IV-62
troubleshooting, IV-49 to
IV-55
Raw Port Printing, IV-22
Regulatory Information, 2
Remote LPD Printing, IV-18 to
IV-19

Remote Print Queue Name,
FF/LF/NF, IV-16
Resetting the OkiLAN 6120e
in NetWare, III-17
Restoring Factory Default
Settings
in NetWare, III-18
in TCP/IP, IV-35
Routers, V-4
RPrinter Mode in NetWare,
III-5, III-8

S

SCO UNIX Application
prerequisites, IV-73
procedure, IV-74
Security in SNMP, II-5
Set Community Name in
TCP/IP, IV-31
SNMP
configuration options,
OkiNet for TCP/IP, IV-30
to IV-31
private MIB, II-3 to II-4
traps, II-4 to II-5
Solaris 2.x Application
prerequisites, IV-78
procedure, IV-78
Static Route Entry
assigning an IP address,
IV-11
troubleshooting, IV-52
Sun-OS v4.1.x Application
prerequisites, IV-79 to IV-80
procedure, IV-80

T**TCP/IP**

- configuration overview, IV-5
- network printing, configuring for, IV-15
- OkiLAN 6120e connect for TCP/IP, VI-4 to VI-5

Telnet Session

- configuring port information, IV-46 to IV-47
- identifying default gateway IP address, IV-46
- running, IV-43
- specifying print server IP address, IV-45
- specifying the subnet mask for your network, IV-45
- starting, IV-41

Timeout Checking, IV-21**Trap Community Name in TCP/IP, IV-31****Trap Destination in TCP/IP, IV-33****Traps, SNMP, II-4 to II-5**

- configuration, III-15 to III-16

Troubleshooting

- LAN Manager/LAN Server no configuration sheet, V-17
- unable to print, V-17

TCP/IP

- BOOTP, IV-50
- FTP, IV-55
- gleaning, IV-50
- hardware error messages, IV-53
- OkiNet for TCP/IP utility, IV-53
- RARP, IV-50

- restoring to factory defaults, IV-49
- static route entry, IV-52
- unable to assign IP address, IV-50 to IV-53
- unable to print, IV-54 to IV-55
- UNIX BOOTP, IV-51
- Winsock errors, IV-53

U**Ultrix v4.2 Application prerequisites, IV-79 to IV-80**

- procedure, IV-80

UNIX BOOTP Troubleshooting, IV-51**V****Verifying Access to the OkiLAN 6120e, IV-13****View Settings, Modifying in NetWare, III-20**

- in OkiNet for TCP/IP, IV-37

W**Web Configuration, II-10 to II-17**

- Admin configuration, II-12 to II-14
- connecting to the OkiLAN 6120e, II-10 to II-11
- OkiLAN 6120e server discovery, II-16
- reset, II-16
- status information, II-15
- support menu, II-15
- Web Configuration, for TCP/IP, IV-42

- Web JetAdmin Support, II-8 to II-9
 - configuring the OkiLAN 6120e, II-8
 - installing a Windows NT printer, II-8 to II-9
 - obtaining diagnostic information, II-9
- Windows 95
 - DLC requirements, VI-12
 - OkiNet connect for DLC, VI-12 to VI-13
 - OkiNet connect for TCP/IP, VI-10 to VI-12
 - TCP/IP requirements, VI-10
- Windows NT 4.0
 - connect for DLC, VI-5 to VI-6
 - OkiLAN 6120e setup, VI-3 to VI-9
 - requirements, VI-3
- Winsock Troubleshooting, IV-53

Free Manuals Download Website

<http://myh66.com>

<http://usermanuals.us>

<http://www.somanuals.com>

<http://www.4manuals.cc>

<http://www.manual-lib.com>

<http://www.404manual.com>

<http://www.luxmanual.com>

<http://aubethermostatmanual.com>

Golf course search by state

<http://golfingnear.com>

Email search by domain

<http://emailbydomain.com>

Auto manuals search

<http://auto.somanuals.com>

TV manuals search

<http://tv.somanuals.com>