

Quick Start Guide Stylus 710 Stylus 700

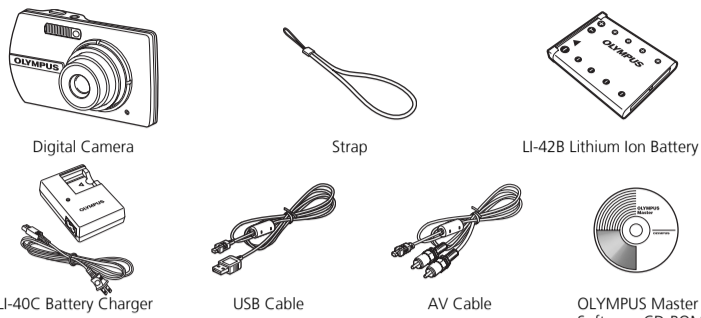
Start Here

For more information, please refer to the Basic & Advanced Manuals or visit: www.olympusamerica.com/support

OLYMPUS IMAGING AMERICA INC.

BEFORE YOU BEGIN

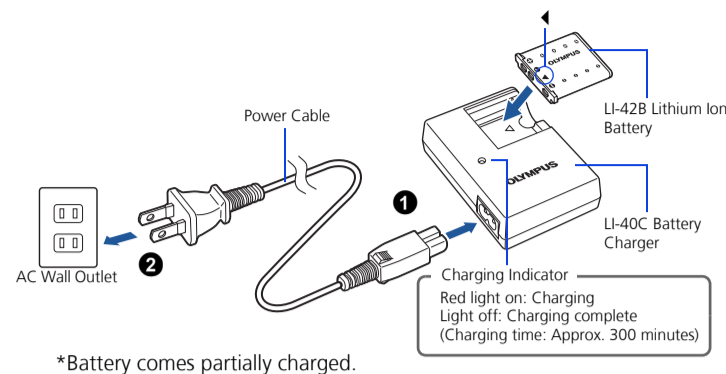
Gather these items (box contents)



Items not shown: Advanced Manual (CD-ROM), Basic Manual, warranty card. Contents may vary depending on purchase location.

The screen and camera illustrations shown in this manual were produced during the development stages and may differ from the actual product. Unless otherwise specified, the explanation about these illustrations is provided in Stylus710/μ710.

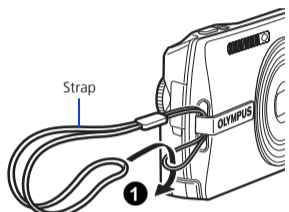
Charge the battery (recommended*)



*Battery comes partially charged.

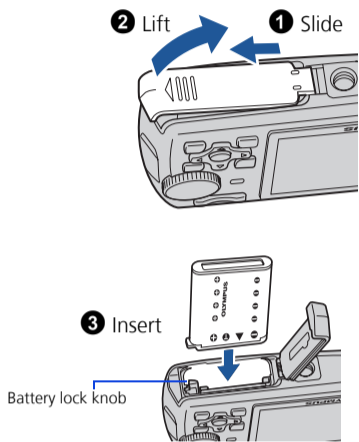
1 GET STARTED

a. Attach the strap



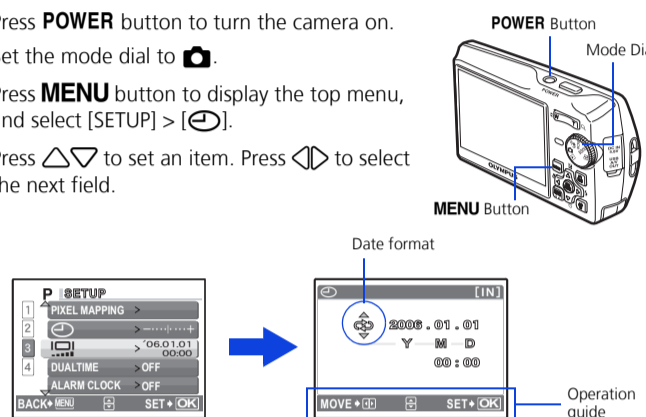
- Pull the strap tight so that it does not come loose.

b. Insert the battery



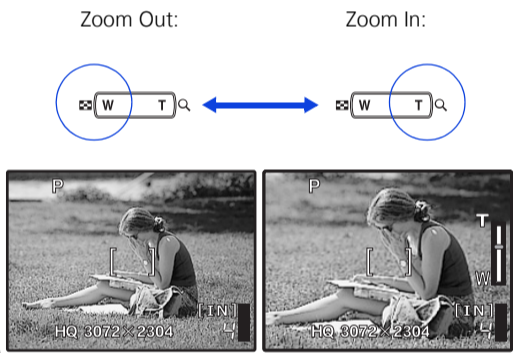
c. Set the date and time

- 1 Press **POWER** button to turn the camera on.
- 2 Set the mode dial to .
- 3 Press **MENU** button to display the top menu, and select [SETUP] > [DATE].
- 4 Press Δ / ∇ to set an item. Press \leftarrow / \rightarrow to select the next field.

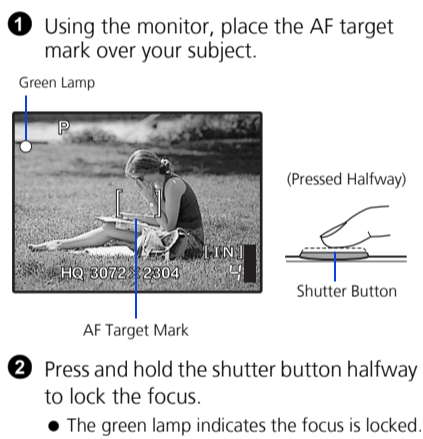


2 TAKE A PICTURE

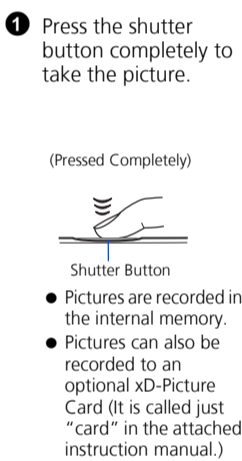
a. Zoom



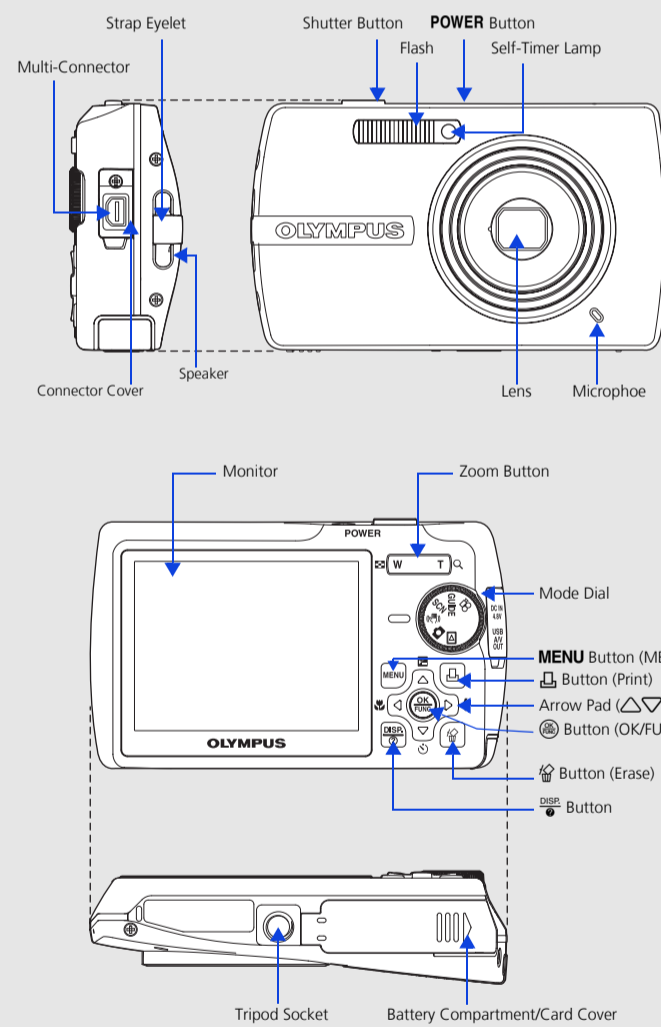
b. Focus



c. Take the picture



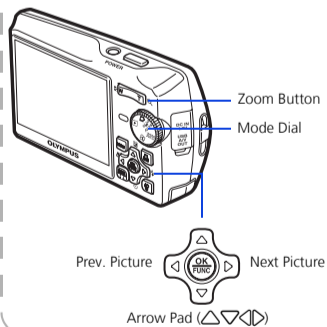
CAMERA DIAGRAM



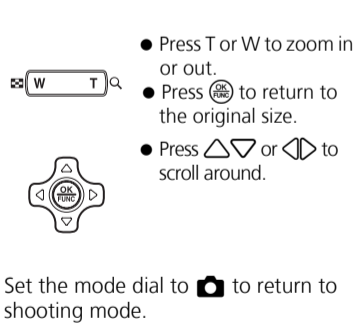
3 REVIEW OR ERASE A PICTURE

a. Set the mode dial to

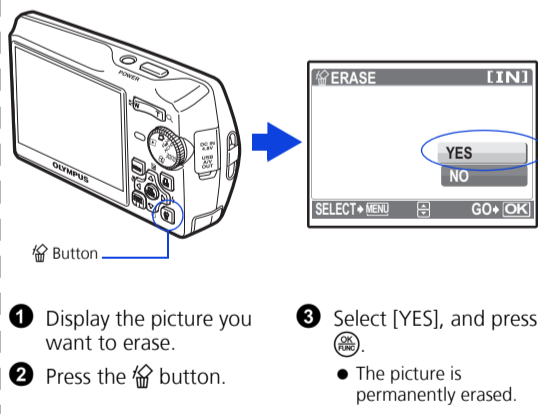
- The last picture taken will be displayed.



b. Take a closer look



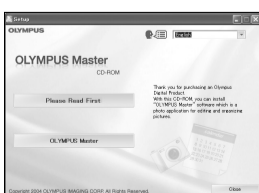
c. To erase a picture



4 TRANSFER IMAGES

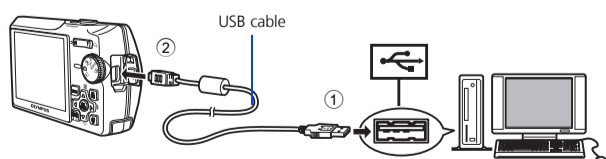
a. Install the software

- 1 Insert the OLYMPUS Master CD-ROM.
 - 2 **Windows:** Click the "OLYMPUS Master" button.
Macintosh: Double-click the "Installer" icon.
 - 3 Simply follow the on-screen instructions.
- Remember to register your camera when you install OLYMPUS Master or visit: www.olympusamerica.com/prodreg

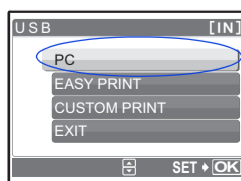


b. Connect the camera to the computer

- 1 Connect the camera and computer using the USB cable (included).
• The monitor will turn on automatically.



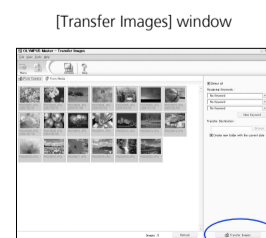
- 2 Select [PC] on the monitor, and press .



- Your PC will now recognize your camera as a removable storage drive.

c. Transfer images to the computer

- 1 With the camera now connected, open OLYMPUS Master.
• The [Transfer Images] window is displayed.
- 2 Select the images you want to transfer, and click the [Transfer Images] button.



If the [Transfer Images] window is not displayed automatically:

- a. Click the "Transfer Images" icon on the OLYMPUS Master main menu.
- b. Click the "From Camera" icon.

Free Manuals Download Website

<http://myh66.com>

<http://usermanuals.us>

<http://www.somanuals.com>

<http://www.4manuals.cc>

<http://www.manual-lib.com>

<http://www.404manual.com>

<http://www.luxmanual.com>

<http://aubethermostatmanual.com>

Golf course search by state

<http://golfingnear.com>

Email search by domain

<http://emailbydomain.com>

Auto manuals search

<http://auto.somanuals.com>

TV manuals search

<http://tv.somanuals.com>