

Solid Birch Drawer Parts

Prefinished

From Pack...



To Stack...



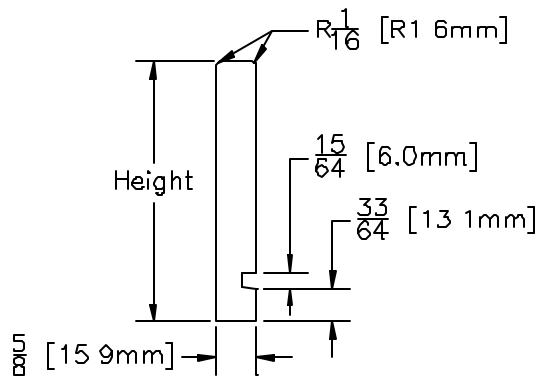
In about an Hour!



Omega
Industries, Inc.™

Drawer Part Specifications

Prefinished



DRAWER SIDES

- 5/8" Solid edge glued Birch construction

PART NUMBER	HEIGHT	LENGTH	SHRINK PACK/QTY
D8000DNL2	2 1/2" (63.5 mm)	22" (558.8 mm)	20
D8005DNL2	3 1/2" (88.9 mm)	22" (558.8 mm)	20
D8010DNL2	4" (101.6 mm)	22" (558.8 mm)	20
D8020UNL2	6" (152.4 mm)	22" (558.8 mm)	20
D8025DNL2	8" (203.2 mm)	22" (558.8 mm)	10
D8035DNL2	10" (254.0 mm)	22" (558.8 mm)	10
D8030DNL2	10" NG* (254.0 mm)	22" (558.8 mm)	10

DRAWER FRONTS/BACKS

- 5/8" Solid fingerjointed Birch construction

D8040DNL2	2 1/2" (63.5 mm)	67" (1.7018 m)	5
D8045DNL2	3 1/2" (88.9 mm)	67" (1.7018 m)	5
D8050DNL2	4" (101.6 mm)	67" (1.7018 m)	5
D8060DNL2	6" (152.4 mm)	67" (1.7018 m)	5
D8065DNL2	8" (203.2 mm)	67" (1.7018 m)	3
D8075DNL2	10" (254.0 mm)	67" (1.7018 m)	3
D8070DNL2	10" NG* (254.0 mm)	67" (1.7018 m)	3

DRAWER BOTTOMS

- 5 mm Baltic Birch Plywood (B/BB grade)

D8017GNL2	21 7/8" (555.6 mm)	60" (1.524 m)	3
-----------	--------------------	---------------	---

* No Groove, finished radius on top & bottom. Allows you to customize the height of the parts needed.



1010 Rowe St., Elkhart, IN. 46516
 Phone: (574) 295-5353 Fax: (574) 295-5329
www.omegaindustries.com

Free Manuals Download Website

<http://myh66.com>

<http://usermanuals.us>

<http://www.somanuals.com>

<http://www.4manuals.cc>

<http://www.manual-lib.com>

<http://www.404manual.com>

<http://www.luxmanual.com>

<http://aubethermostatmanual.com>

Golf course search by state

<http://golfingnear.com>

Email search by domain

<http://emailbydomain.com>

Auto manuals search

<http://auto.somanuals.com>

TV manuals search

<http://tv.somanuals.com>