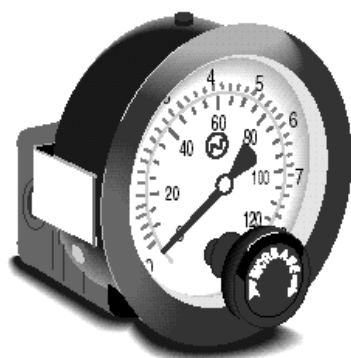


User's Guide



PRG101



PRG501

Shop online at

omega.com®
Ω OMEGA®

www.omega.com

e-mail: info@omega.com



PRG101/PRG501 Pressure Regulators



WARRANTY/DISCLAIMER

OMEGA ENGINEERING, INC. warrants this unit to be free of defects in materials and workmanship for a period of **13 months** from date of purchase. OMEGA's WARRANTY adds an additional one (1) month grace period to the normal **one (1) year product warranty** to cover handling and shipping time. This ensures that OMEGA's customers receive maximum coverage on each product.

If the unit malfunctions, it must be returned to the factory for evaluation. OMEGA's Customer Service Department will issue an Authorized Return (AR) number immediately upon phone or written request. Upon examination by OMEGA, if the unit is found to be defective, it will be repaired or replaced at no charge. OMEGA's WARRANTY does not apply to defects resulting from any action of the purchaser, including but not limited to mishandling, improper interfacing, operation outside of design limits, improper repair, or unauthorized modification. This WARRANTY is VOID if the unit shows evidence of having been tampered with or shows evidence of having been damaged as a result of excessive corrosion; or current, heat, moisture or vibration; improper specification; misapplication; misuse or other operating conditions outside of OMEGA's control. Components which wear are not warranted, including but not limited to contact points, fuses, and triacs.

OMEGA is pleased to offer suggestions on the use of its various products. However, OMEGA neither assumes responsibility for any omissions or errors nor assumes liability for any damages that result from the use of its products in accordance with information provided by OMEGA, either verbal or written. OMEGA warrants only that the parts manufactured by it will be as specified and free of defects. OMEGA MAKES NO OTHER WARRANTIES OR REPRESENTATIONS OF ANY KIND WHATSOEVER, EXPRESS OR IMPLIED, EXCEPT THAT OF TITLE, AND ALL IMPLIED WARRANTIES INCLUDING ANY WARRANTY OF MERCHANTABILITY AND FITNESS FOR A PARTICULAR PURPOSE ARE HEREBY DISCLAIMED. LIMITATION OF LIABILITY: The remedies of purchaser set forth herein are exclusive, and the total liability of OMEGA with respect to this order, whether based on contract, warranty, negligence, indemnification, strict liability or otherwise, shall not exceed the purchase price of the component upon which liability is based. In no event shall OMEGA be liable for consequential, incidental or special damages.

CONDITIONS: Equipment sold by OMEGA is not intended to be used, nor shall it be used: (1) as a "Basic Component" under 10 CFR 21 (NRC), used in or with any nuclear installation or activity; or (2) in medical applications or used on humans. Should any Product(s) be used in or with any nuclear installation or activity, medical application, used on humans, or misused in any way, OMEGA assumes no responsibility as set forth in our basic WARRANTY/DISCLAIMER language, and, additionally, purchaser will indemnify OMEGA and hold OMEGA harmless from any liability or damage whatsoever arising out of the use of the Product(s) in such a manner.

RETURN REQUESTS/INQUIRIES

Direct all warranty and repair requests/inquiries to the OMEGA Customer Service Department. BEFORE RETURNING ANY PRODUCT(S) TO OMEGA, PURCHASER MUST OBTAIN AN AUTHORIZED RETURN (AR) NUMBER FROM OMEGA'S CUSTOMER SERVICE DEPARTMENT (IN ORDER TO AVOID PROCESSING DELAYS). The assigned AR number should then be marked on the outside of the return package and on any correspondence.

The purchaser is responsible for shipping charges, freight, insurance and proper packaging to prevent breakage in transit.

FOR **WARRANTY** RETURNS, please have the following information available BEFORE contacting OMEGA:

1. Purchase Order number under which the product was PURCHASED,
2. Model and serial number of the product under warranty, and
3. Repair instructions and/or specific problems relative to the product.

FOR **NON-WARRANTY** REPAIRS, consult OMEGA for current repair charges. Have the following information available BEFORE contacting OMEGA:

1. Purchase Order number to cover the COST of the repair,
2. Model and serial number of the product, and
3. Repair instructions and/or specific problems relative to the product.

OMEGA's policy is to make running changes, not model changes, whenever an improvement is possible. This affords our customers the latest in technology and engineering.

OMEGA is a registered trademark of OMEGA ENGINEERING, INC.

© Copyright 2002 OMEGA ENGINEERING, INC. All rights reserved. This document may not be copied, photocopied, reproduced, translated, or reduced to any electronic medium or machine-readable form, in whole or in part, without the prior written consent of OMEGA ENGINEERING, INC.

GENERAL DESCRIPTION

The Omega PRG-501 and PRG501 Series Pressure Regulators have an advanced design consisting of a precision measurement capsule and a high gain servo amplifier to achieve high performance. The regulator can be used in a 'dead end' application and will exhaust whenever the setpoint is lowered. Changes in supply pressure have a minimal effect on the regulation accuracy. The regulator can be panel or pipe mounted. These regulators are unaffected by vibration and mounting position. A set point locknut is provided.

The PRG101 has two ¼ NPT gauge ports available for mounting OMEGA® pressure gauges for local indication. The PRG501 is ideal for having a dial gauge reading when the unit is panel mounted. The dial gauge would be external to the panel.

The PRG101 regulators are available in the following pressure ranges:

Model No.	Adjustable Range
PRG101-120	2-120 PSIG
PRG101-60	2-60 PSIG
PRG101-25	2-25 PSIG

The PRG501 regulators are available in the following pressure ranges:

Model No.	Adjustable Range
PRG501-120	2-120 PSIG
PRG501-60	2-60 PSIG
PRG501-30	2-30 PSIG
PRG501-X15	3-15 PSIG

OPERATION

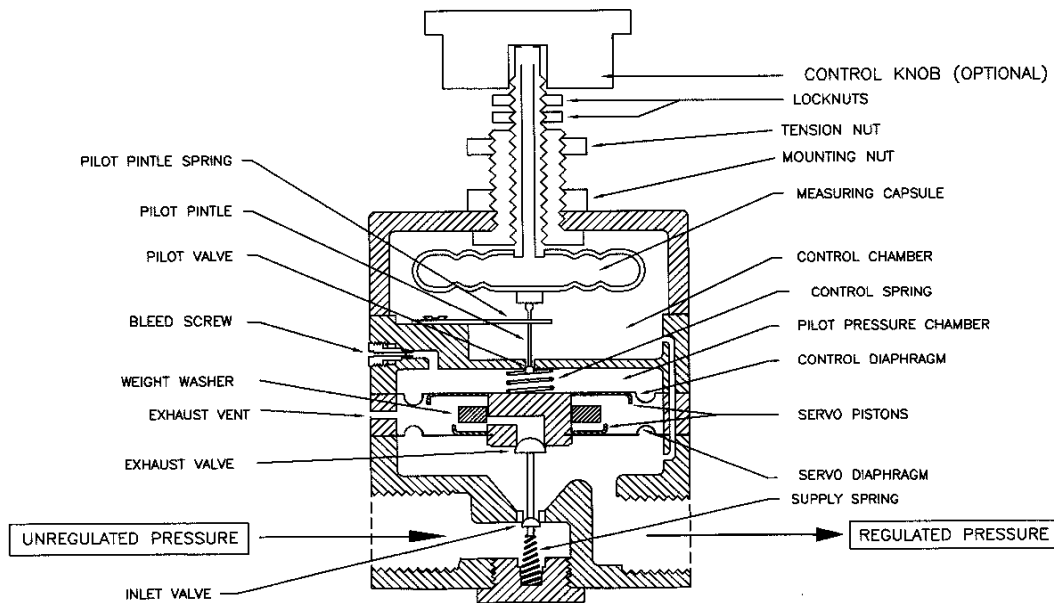
The PRG101 and PRG501 are precision pressure regulators, normally used with compressed air. The operation has been specifically designed for zero flow 'dead end' service, but can provide large air flows up to 5L/sec (10scfm) when required. It maintains a highly stable outlet pressure against variation in supply pressure, flow, temperature and vibration. These instruments use small quantities of air for operation (0.5-2 litres/minute) and can be set to a minimum below 0.14 bar (2psi). Tight shut off is not possible.

BASIC MECHANISM

The units use a piston to control a high gain pneumatic two-stage servo system. When increasing the regulated pressure the handwheel is turned clockwise, forcing the measuring capsule/piston assembly downward. This pushes the pilot diaphragm and control diaphragm downward. As a result, the main valve opens and the supply pressure enters the regulator. The resulting pressure change causes the measuring capsule to compress. This compression causes the pilot diaphragm and the control diaphragm to move upward, which then shuts the main valve.

When decreasing the regulated pressure, the handwheel is turned counterclockwise, forcing the measuring capsule/piston assembly upward. This allows the pilot diaphragm and control diaphragm to move upward. As a result, the relief valve opens and air is exhausted through the vent. The resulting pressure drops causes the measuring capsule to expand. This expansion causes the pilot diaphragm and control diaphragm to move down, which then shuts the relief valve.

To maintain a state of equilibrium, the action of the measuring capsule as described above ensures a precise constant pressure regulation. Air is bled at a constant rate through the bleed orifice so that a very small movement of the pilot valve induces a substantial pilot pressure change, which creates a high servo amplification.



INSTALLATION

Mounting

The PRG101 is usually panel mounted into a minimum 11.5mm hole. Direct pipe mounting is also possible. To install on a panel remove the knob (grub screw) tension nut and mounting nut. Insert into the panel and replace the nuts and knob. The mounting nut should be retightened to a torque of 5Nm; set the tension nut to give adequate friction for the desired service. It is not necessary to remove the locknuts for installation; these may be reset if required to give a maximum pressure below the factory setting.

Pneumatics

All pneumatics ports are threaded ¼” NPT. Two gauge ports may be used as required, and are supplied sealed with pipe plugs.

The following installation precautions are ESSENTIAL:

Air supply- This can be between limits of 0.2 bar (3 psi) above the maximum required outlet pressure and 10 bar (150psi). The air supply must be filtered to 25 micron, with oil content below 1ppm and dew point at least -10°C below lowest ambient temperature. Filtering and oil removal are vital for long life.

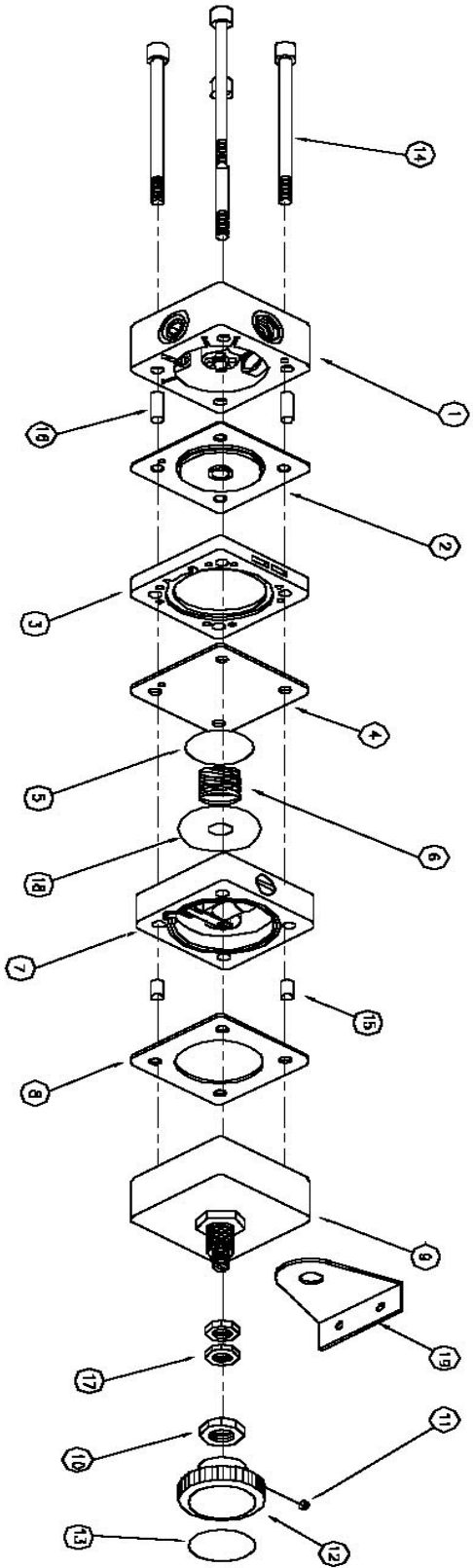
Pipe Fitting – Fit appropriate pipe fittings for the pipe sizes required. DO NOT USE PTFE TAPE. Thread sealing can be easily achieved with loctite hydraulic seal or similar anaerobic seals.

Pipe sizes – 6mm plastic tubes are commonly used, but increase to 8 or 10mm is desirable if long pipe runs of high flows are present. Plastic tubes (e.g. nylon) are convenient and clean.

HEALTH AND SAFETY

The units are simple pressure control instruments and present few safety hazards. Installation should be in accordance with BS6739 or other relevant national standards. Compressed air can produce accidents if not correctly used and the user is urged to adhere to established compressed air safety standard.

These instruments contain no substance which presents hazards in normal use. The measuring capsule is constructed of beryllium copper, which can present disposal hazards; if a satisfactory disposal procedure is not available, scrap instruments should be returned to the factory.

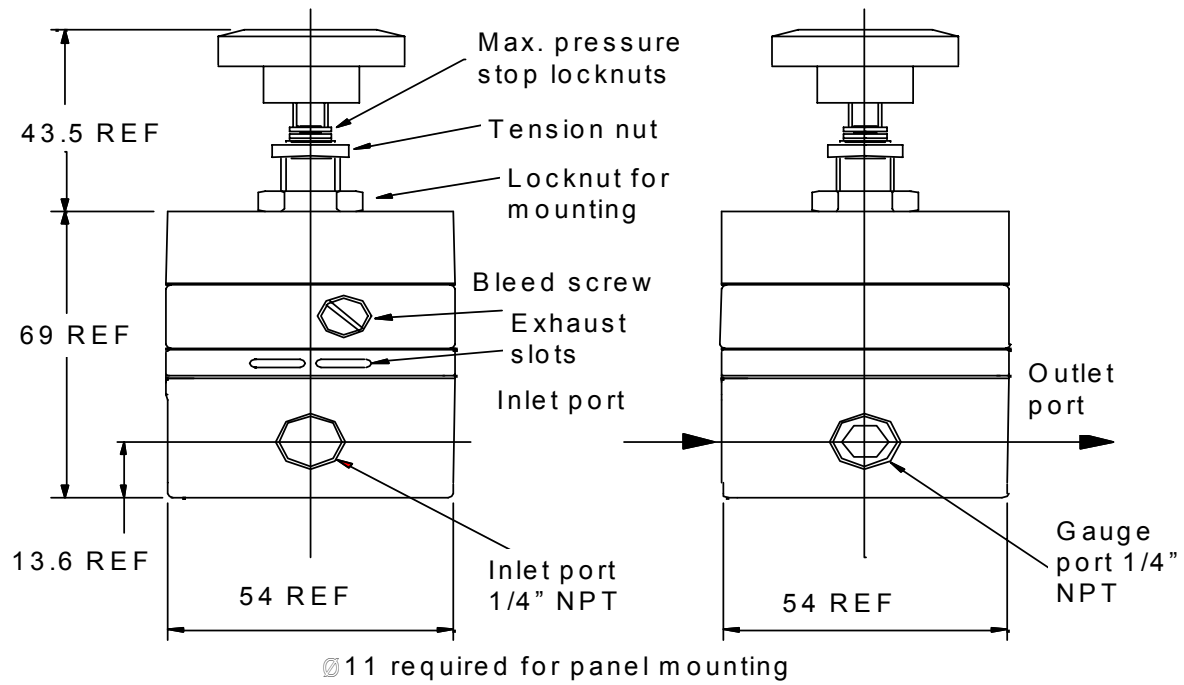


OPERATION SEQUENCE

ASSEMBLE COMPONENTS AS SHOWN.

- | | |
|--|---------------------------------------|
| 1. BASE ASSEMBLY | 11. GRUB SCREW |
| 2. SERVO ASSEMBLY | 12. KNOB |
| 3. SPACER | 13. INCREASE LABEL
STICK ON TO 12. |
| 4. CONTROL DIAPHRAGM | 14. M4 x 45 SCREW |
| 5. CONTROL DIAPHRAGM LABEL
STICK ON TO 4. | 15. ALIGNMENT BUSH (8mm). |
| 6. CONTROL SPRING | 16. ALIGNMENT BUSH (12mm). |
| 7. HOUSING ASSEMBLY | 17. LOCKING NUTS (14 x 40). |
| 8. BONNET GASKET | 18. NOSE REDUCTION WASHER. |
| 9. BONNET ASSEMBLY | 19. BRACKET (OPTIONAL). |
| 10. TENSION NUT | |

DIMENSION DETAILS





OMEGAnet® Online Service
www.omega.com

Internet e-mail
info@omega.com

Servicing North America:

USA: One Omega Drive, P.O. Box 4047
ISO 9001 Certified Stamford CT 06907-0047
TEL: (203) 359-1660 FAX: (203) 359-7700
e-mail: info@omega.com

Canada: 976 Bergar
Laval (Quebec) H7L 5A1
TEL: (514) 856-6928 FAX: (514) 856-6886
e-mail: info@omega.ca

For immediate technical or application assistance:

USA and Canada: Sales Service: 1-800-826-6342 / 1-800-TC-OMEGA®
Customer Service: 1-800-622-2378 / 1-800-622-BEST®
Engineering Service: 1-800-872-9436 / 1-800-USA-WHEN®
TELEX: 996404 EASYLINK: 62968934 CABLE: OMEGA

Mexico: En Español: (001) 203-359-7803 e-mail: espanol@omega.com
FAX: (001) 203-359-7807 info@omega.com.mx

Servicing Europe:

Benelux: Postbus 8034, 1180 LA Amstelveen, The Netherlands
TEL: +31 (0)20 3472121 FAX: +31 (0)20 6434643
Toll Free in Benelux: 0800 0993344
e-mail: sales@omegaeng.nl

Czech Republic: Rudé armády 1868, 733 01 Karviná 8
TEL: +420 (0)69 6311899 FAX: +420 (0)69 6311114
Toll Free: 0800-1-66342 e-mail: info@omegashop.cz

France: 11, rue Jacques Cartier, 78280 Guyancourt, France
TEL: +33 (0)1 61 37 29 00 FAX: +33 (0)1 30 57 54 27
Toll Free in France: 0800 466 342
e-mail: sales@omega.fr

Germany/Austria: Daimlerstrasse 26, D-75392 Deckenpfronn, Germany
TEL: +49 (0)7056 9398-0 FAX: +49 (0)7056 9398-29
Toll Free in Germany: 0800 639 7678
e-mail: info@omega.de

United Kingdom: One Omega Drive, River Bend Technology Centre
ISO 9002 Certified Northbank, Irlam, Manchester
M44 5BD United Kingdom
TEL: +44 (0)161 777 6611 FAX: +44 (0)161 777 6622
Toll Free in United Kingdom: 0800-488-488
e-mail: sales@omega.co.uk

It is the policy of OMEGA to comply with all worldwide safety and EMC/EMI regulations that apply. OMEGA is constantly pursuing certification of its products to the European New Approach Directives. OMEGA will add the CE mark to every appropriate device upon certification.

The information contained in this document is believed to be correct, but OMEGA Engineering, Inc. accepts no liability for any errors it contains, and reserves the right to alter specifications without notice.

WARNING: These products are not designed for use in, and should not be used for, patient-connected applications.

Where Do I Find Everything I Need for Process Measurement and Control? **OMEGA...Of Course!**

Shop online at www.omega.com

TEMPERATURE

- Thermocouple, RTD & Thermistor Probes, Connectors, Panels & Assemblies
- Wire: Thermocouple, RTD & Thermistor
- Calibrators & Ice Point References
- Recorders, Controllers & Process Monitors
- Infrared Pyrometers

PRESSURE, STRAIN AND FORCE

- Transducers & Strain Gages
- Load Cells & Pressure Gages
- Displacement Transducers
- Instrumentation & Accessories

FLOW/LEVEL

- Rotameters, Gas Mass Flowmeters & Flow Computers
- Air Velocity Indicators
- Turbine/Paddlewheel Systems
- Totalizers & Batch Controllers

pH/CONDUCTIVITY

- pH Electrodes, Testers & Accessories
- Benchtop/Laboratory Meters
- Controllers, Calibrators, Simulators & Pumps
- Industrial pH & Conductivity Equipment

DATA ACQUISITION

- Data Acquisition & Engineering Software
- Communications-Based Acquisition Systems
- Plug-in Cards for Apple, IBM & Compatibles
- Datalogging Systems
- Recorders, Printers & Plotters

HEATERS

- Heating Cable
- Cartridge & Strip Heaters
- Immersion & Band Heaters
- Flexible Heaters
- Laboratory Heaters

ENVIRONMENTAL MONITORING AND CONTROL

- Metering & Control Instrumentation
- Refractometers
- Pumps & Tubing
- Air, Soil & Water Monitors
- Industrial Water & Wastewater Treatment
- pH, Conductivity & Dissolved Oxygen Instruments

M1846-09/02

Free Manuals Download Website

<http://myh66.com>

<http://usermanuals.us>

<http://www.somanuals.com>

<http://www.4manuals.cc>

<http://www.manual-lib.com>

<http://www.404manual.com>

<http://www.luxmanual.com>

<http://aubethermostatmanual.com>

Golf course search by state

<http://golfingnear.com>

Email search by domain

<http://emailbydomain.com>

Auto manuals search

<http://auto.somanuals.com>

TV manuals search

<http://tv.somanuals.com>