

QUICK SETUP

Model : TX-SR607



See the other side of this sheet for the AV component hookup.

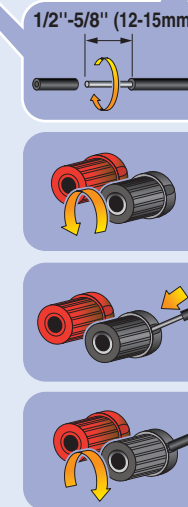
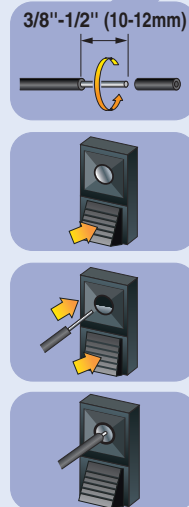
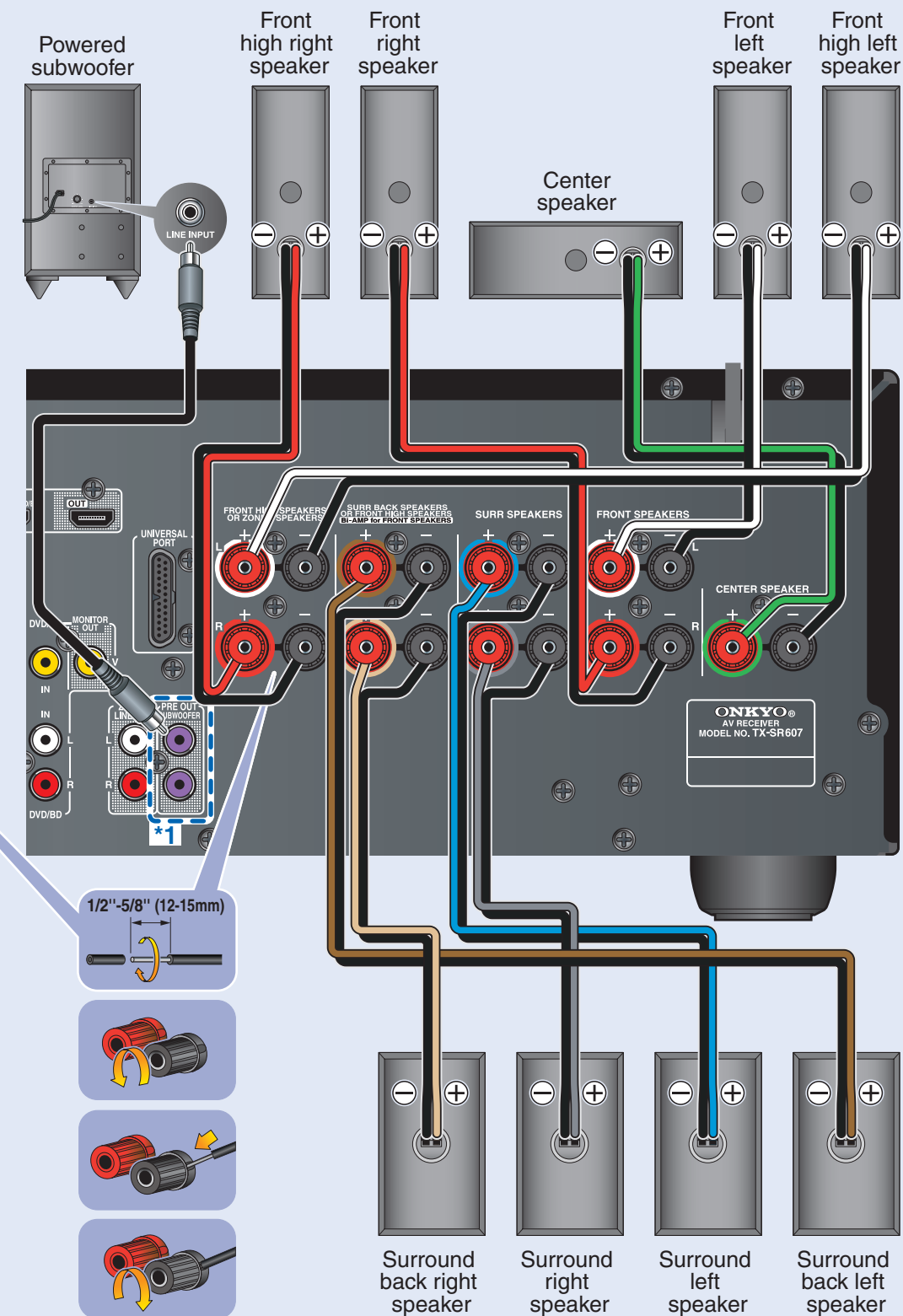
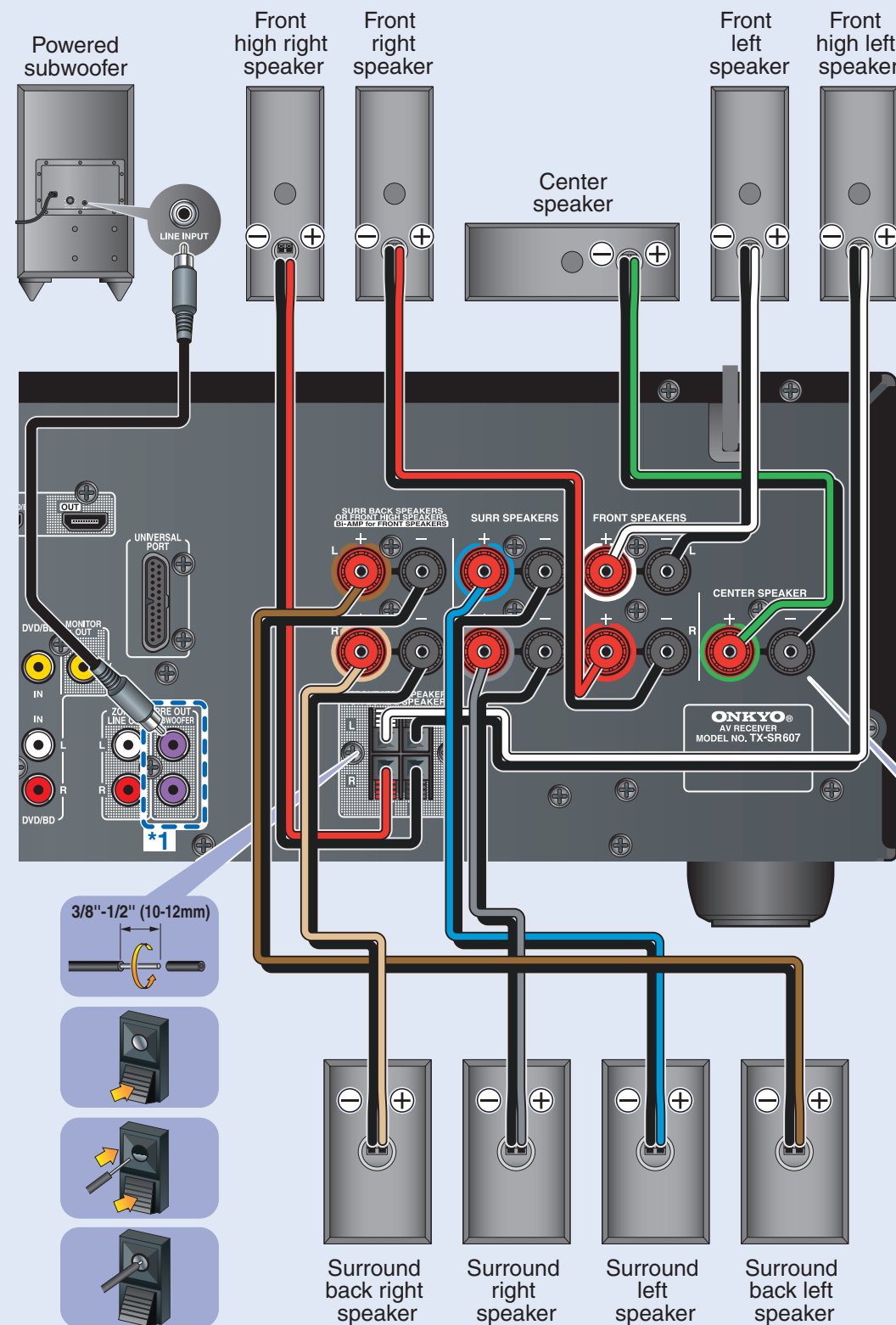


Speaker Hookup

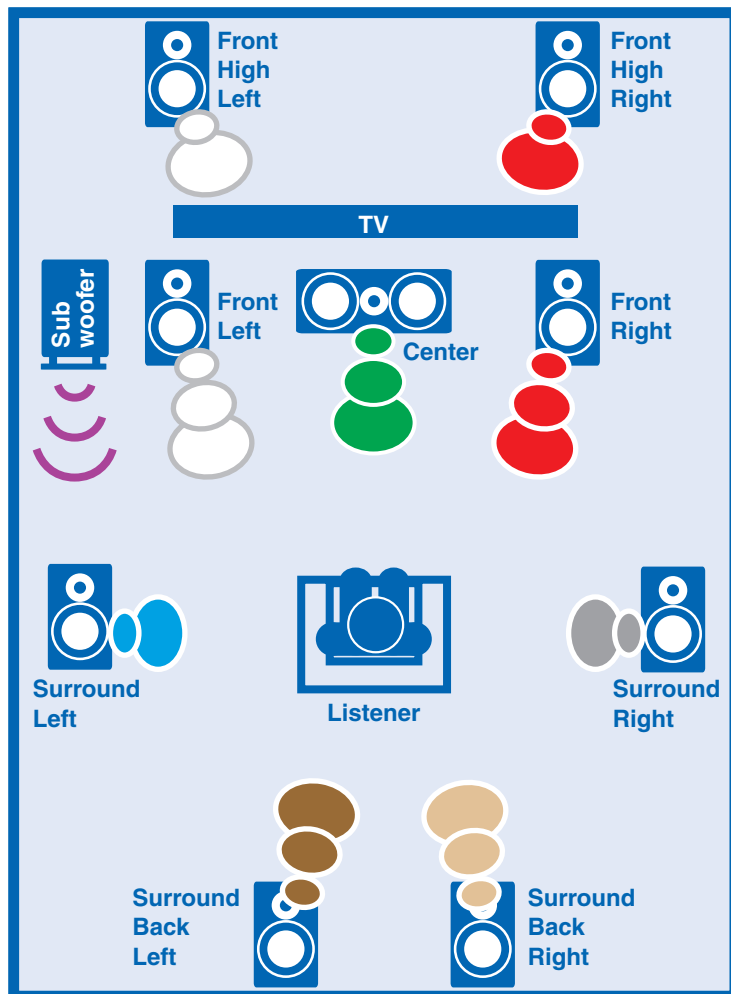
Thank you for purchasing this product. This quick setup sheet shows the typical hookup method for connecting speakers and AV components (DVD player, TV, cable/satellite receiver). For more detailed hookup information and operating instructions, please see the Instruction Manual.

< North American / Taiwan models >

< Other models >



Speaker Layout (Main Room)



*1 The same signal is output from each jack.



AV Component Hookup

See the other side of this sheet for the Speaker hookup.

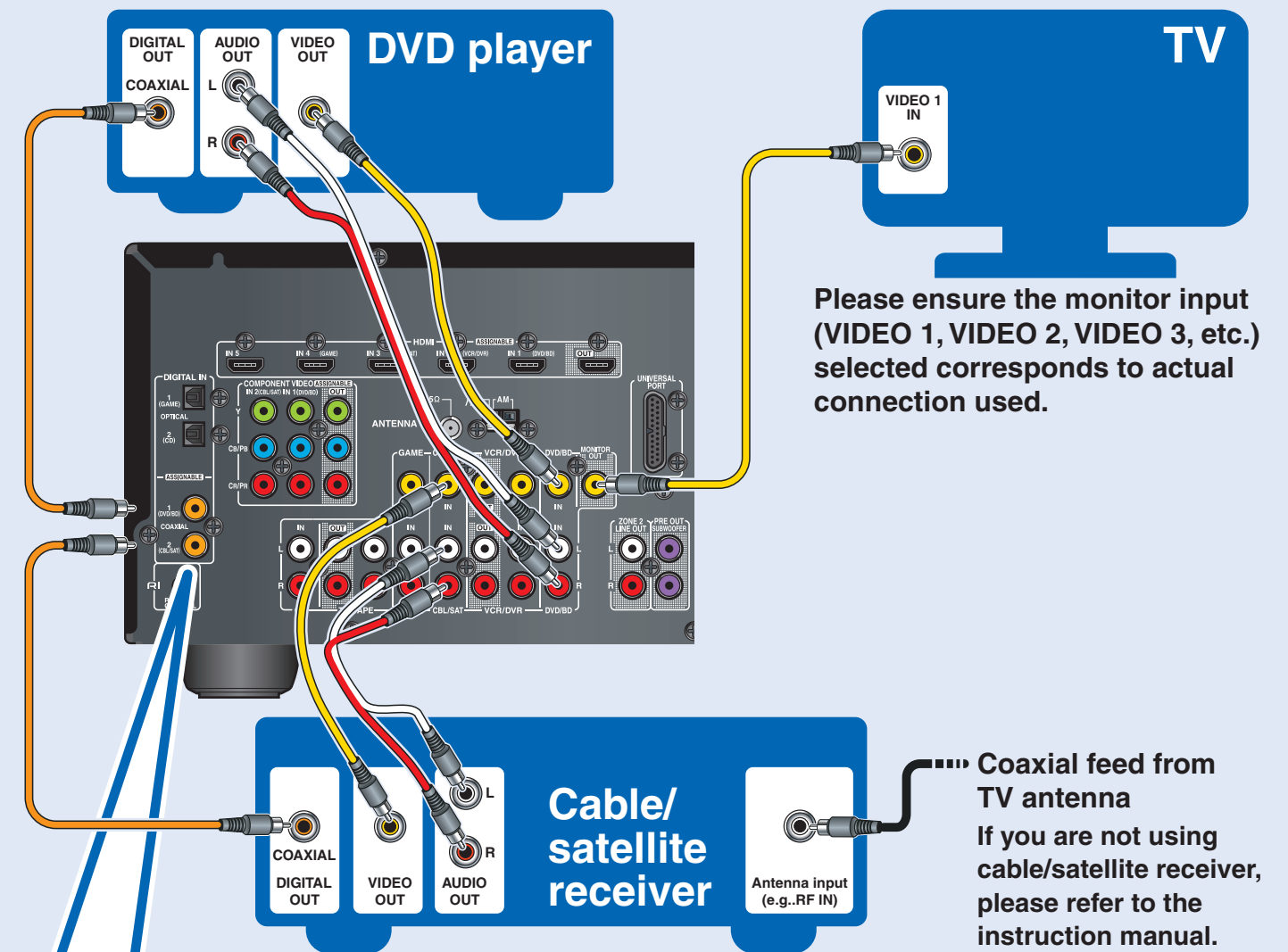
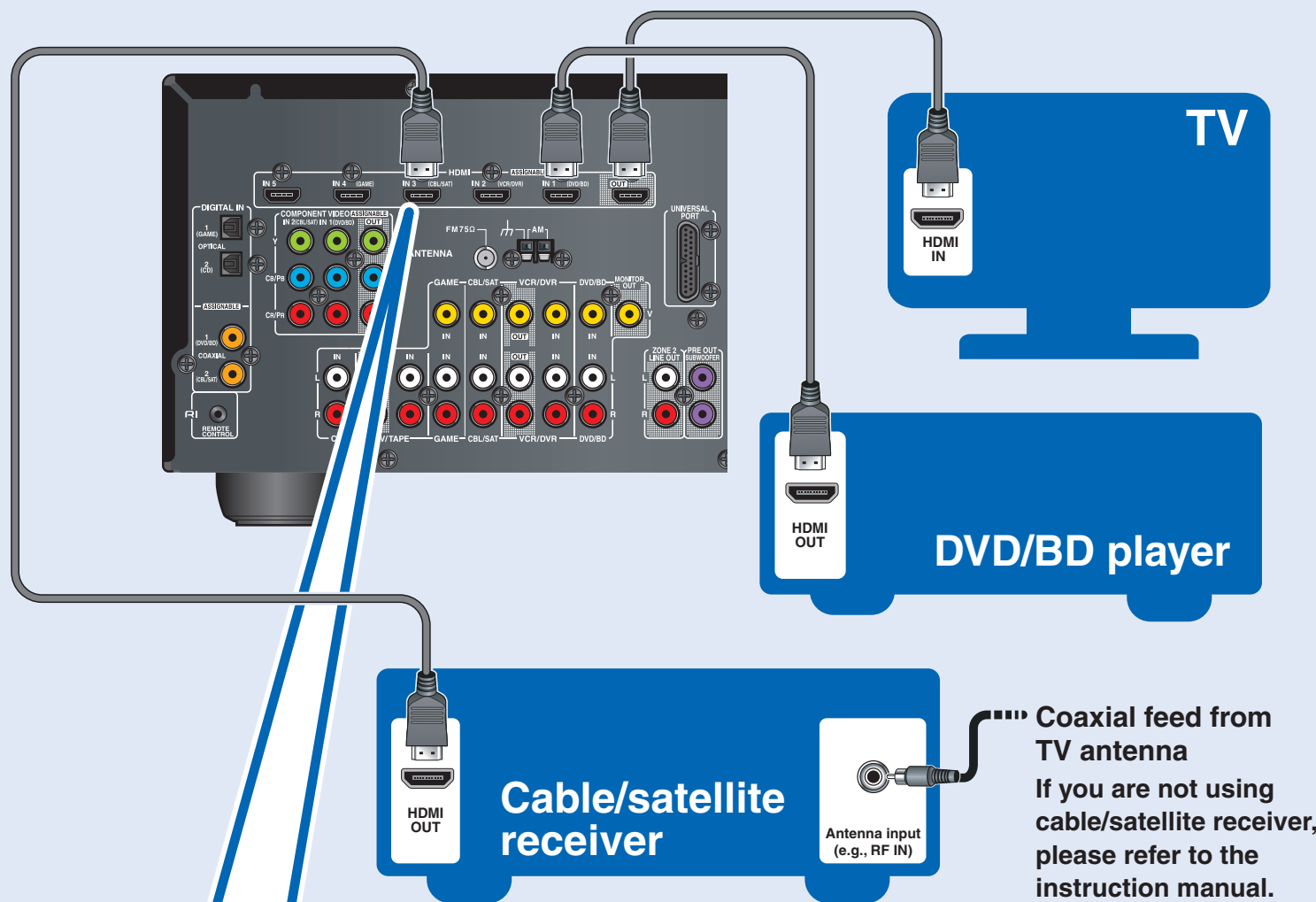


With an HDMI cable you can send both audio and video with a single cable, making connecting simple and keeping wires neat. If you have an HDMI-compatible TV and players, you can connect them to the AV receiver with HDMI cables. Digital audio signals received at HDMI IN input are output by the speakers and headphones connected to the AV receiver.

IF NO HDMI



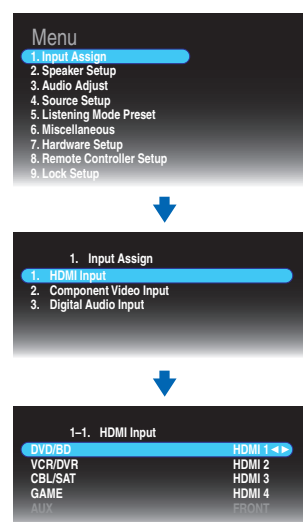
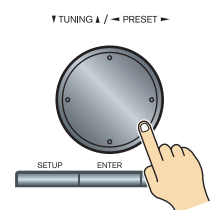
If your TV or player doesn't support HDMI, use the analog or digital connections shown below.



Using the HDMI Inputs

If there's no picture on your TV, you'll need to assign the HDMI inputs as necessary using the onscreen setup menus. If you connect your DVD/BD player to the AV receiver's HDMI IN 1, and connect your cable/satellite receiver to HDMI IN 3, as shown above, it's not necessary to change the default assignments.

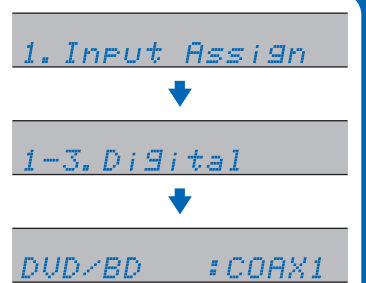
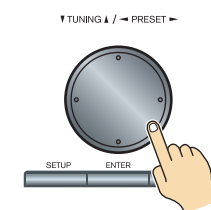
On the front panel



Using the Digital Inputs

If there's no sound, you'll need to assign the digital inputs as necessary using the setup menus on the AV receiver's display. If you connect your DVD player to the AV receiver's DIGITAL IN COAXIAL 1, and your cable/satellite receiver to the DIGITAL IN COAXIAL 2, as shown, it's not necessary to assign the digital input.

On the front panel



The onscreen setup menus appear only on a TV that is connected to the HDMI OUT. If your TV is connected to the MONITOR OUT or the COMPONENT VIDEO OUT, use the AV receiver's display when changing settings.

Free Manuals Download Website

<http://myh66.com>

<http://usermanuals.us>

<http://www.somanuals.com>

<http://www.4manuals.cc>

<http://www.manual-lib.com>

<http://www.404manual.com>

<http://www.luxmanual.com>

<http://aubethermostatmanual.com>

Golf course search by state

<http://golfingnear.com>

Email search by domain

<http://emailbydomain.com>

Auto manuals search

<http://auto.somanuals.com>

TV manuals search

<http://tv.somanuals.com>