

Packard Bell
Grafite & Carbon
Disassembly Manual



Packard Bell®

Table of Contents

About this Guide 2
For More Information 2
Technician Notes 2
Disassembly..... 2
Reassembly 2
Required Tools 2
Front Cover 3
Top Cover 3
Hard Disk Drive..... 4
I/O Board..... 5
Notice 6

About this Guide

This guide contains systematic disassembly instructions for the Packard Bell Grafite & Carbon. The instructions are illustrated where necessary with images of the part that is being disassembled.

Packard Bell B.V. reserves the right to make changes to the Grafite & Carbon without notice.

For More Information

For more information about the Packard Bell Grafite & Carbon, visit Packard Bell's support web site at www.packardbell.com. The support web site also has links to additional Packard Bell documentation and detailed specifications.

Technician Notes

Only technicians authorized by Packard Bell B.V. should attempt to repair this device. Because of the complexity of the individual boards and subassemblies, no one should attempt to make repairs at the component level or to make modifications to any printed wiring board. Improper repairs can create a safety hazard. Any indication of component replacement or printed wiring board modifications may void any warranty or exchange allowances.

Disassembly

When disassembling the device, follow these general rules:

- Turn OFF the power using the power button and disconnect the AC adapter.
- Do not disassemble the device into parts that are smaller than those specified here.
- Label all removed connectors; note where the connector goes and in what position.
- Use something to hold the small screws (trays, jars, or cups). Label each cup with the disassembly step number. This can reduce questions about where each screw came from during re-assembly.

Reassembly

Reassembly is the reverse of the disassembly process. Use care to ensure that all cables and screws are returned to their proper positions. Check that no tools or any loose parts have been left inside the device. Check that everything is properly installed and tightened.

- The LED cable goes on the outside of the hard disk drive casing, not underneath the drive!
- The spacer clips are fitted so that they touch the top cover when the device is on. They have been designed to reduce vibrations during operation.

Required Tools

All disassembly procedures can be performed using the following tools:

- Small Phillips screwdriver.

Front Cover

Perform the following steps to remove the front cover:

1. Make sure the power is off.
2. Turn the device upside down.

Note: Use an anti-static mat or something soft like a piece of cloth underneath the device to prevent damage to the exterior of the casing.

3. Insert a flat-blade screwdriver in the 2 orifices to release the front cover and slide the cover up and out of the compartment.



Fig. 1 Removing the front cover.

Top Cover

To remove the top cover, first remove the front cover (see Front Cover on page 3) and then perform the following steps:

1. Turn the device over so the top is facing up.

-
- Slide the top cover to the front of the device and remove the cover.



Fig. 2 Removing the top cover.

Hard Disk Drive

To remove the hard disk drive, first remove the front cover (see Front Cover on page 3), remove the top cover (see Top Cover on page 3), and then perform the following steps:

- Remove the 4 screws (2 on either long side) securing the hard disk drive in the device.

Note: One of the screws on each side of the hard disk drive holds a spacer clip.



Fig. 3 Removing the hard disk drive screws.

Note: In *Fig. 3* only 2 screws are visible; the other 2 screws are located on the other side of the hard disk drive.

-
- Slide the hard disk drive towards the front to disconnect it from the I/O board.



Fig. 4 Removing the hard disk drive.

- Lift the hard disk drive out of the device (see *Fig. 4*).

I/O Board

To remove the I/O board, first remove the front cover (see Front Cover on page 3), remove the top cover (see Top Cover on page 3), remove the hard disk drive (see Hard Disk Drive on page 4), and then perform the following steps:

- Remove the 2 screws securing the I/O board.

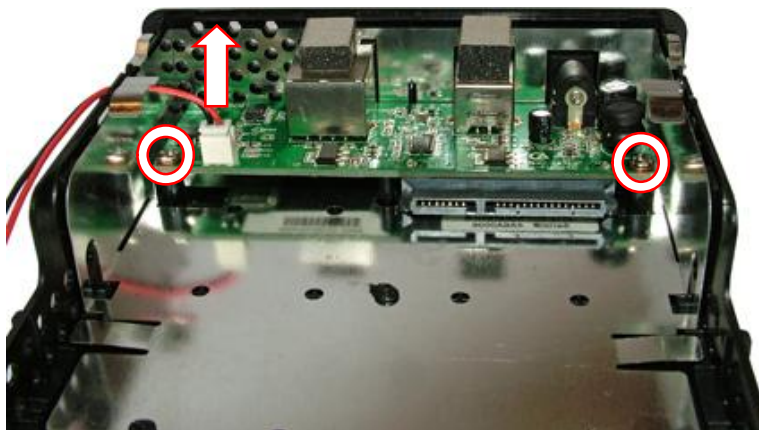


Fig. 5 Removing the I/O board.

- Disconnect the LED cable from the header on the I/O board (see *Fig. 5*).
- Carefully take out the I/O board from the device.

Notice

The information in this guide is subject to change without notice.

This guide contains information protected by copyright. No part of this guide may be photocopied or reproduced in any form or by any means without prior written consent from Packard Bell B.V.

PACKARD BELL B.V. SHALL NOT BE HELD LIABLE FOR TECHNICAL OR EDITORIAL ERRORS OR OMISSIONS CONTAINED HEREIN; NOR FOR INCIDENTAL OR CONSEQUENTIAL DAMAGES RESULTING FROM THE FURNISHING, PERFORMANCE, OR USE OF THIS MATERIAL.

Copyright © 2009 Packard Bell B.V. All rights reserved.

Packard Bell is a registered trademark of Packard Bell B.V.

The names of actual companies and products mentioned herein may be trademarks and/or registered trademarks of their respective owners.

Grafite & Carbon Disassembly Manual

Authors: Dean Egberts & Juan M. Calviño

First Edition: February 2009

Version: 1.0

Part Number: CS036A00

Packard Bell B.V.

www.packardbell.com

Free Manuals Download Website

<http://myh66.com>

<http://usermanuals.us>

<http://www.somanuals.com>

<http://www.4manuals.cc>

<http://www.manual-lib.com>

<http://www.404manual.com>

<http://www.luxmanual.com>

<http://aubethermostatmanual.com>

Golf course search by state

<http://golfingnear.com>

Email search by domain

<http://emailbydomain.com>

Auto manuals search

<http://auto.somanuals.com>

TV manuals search

<http://tv.somanuals.com>