

CompactFlash Size Ethernet LAN Card

**For Both Notebook PC and
Windows CE-based
PDA/ Palm PCs/Pocket PCs**

Quick Installation Guide

M73-APO01-440

Download from Www.Somanuals.com. All Manuals Search And Download.

FCC REGULATORY STATEMENTS

Part15, Class B

This device complies with Part 15 of FCC rules.

Operation is subject to the following two conditions:

1. This device may not cause harmful interface, and
2. This device must accept any interface received, including interface that may cause undesired operation. This equipment has been tested and found to comply with the limits for a Class B digital device, pursuant to Part 15 of the FCC Rules. These limits are designed to provide reasonable protection against harmful interference in a residential installation. This equipment generates, uses and can radiate radio frequency energy, and if not installed and used in accordance with the instructions, may cause harmful interference to radio communications. However, there is no guarantee that interference will not occur in a particular installation. If this equipment does cause harmful interference to radio or television reception, which can be determined by turning off and on, the user is encouraged to try to correct the interference by one or more of the following measures:
 - Reorient or relocate the receiving antenna.
 - Increase the distance between the equipment and receiver.
 - Connect the equipment into an outlet on a circuit different from that to which the receiver is connected.

Changes or modifications not expressly approved by party responsible for compliance could void the user the user authority to operate the equipment.

INTRODUCTION

This CompactFlash Size Ethernet LAN Card is designed for Windows CE-based palm-sized PCs, handheld PCs and any computer with a CompactFlash slot.

Plus, with connecting to a PCMCIA Adapter (not included), this CompactFlash Ethernet LAN Card turns into a PC card that plugs into any computer with a PCMCIA slot.

The CompactFlash Ethernet LAN Card is easy to install, and no external power is required.

SYSTEM REQUIREMENTS

For Windows CE-based PDA/Palm PC:

- A Type I or Type II CompactFlash Slot supporting I/O functionality.
- Windows CE 2.0 or newer version
- Windows CE Service Disk
- CF+ and CompactFlash Spec. Reversion 1.4 compliant Card Services and Socket Services

For Notebook PC:

- An IBM compatible notebook computer with 386SX or faster processor
- At least one Type II PC Card socket
- Drivers and utilities provided with this product

PCMCIA release 2.1 compliant Card Services and Socket Services

OPERATING ENVIRONMENT

For Windows CE-based PDA/Palm PC:

Software Compatibility

Windows CE 2.0 or newer version

For Notebook PC:

Novell Netware 3.x/4.x

Microsoft LAN Manager

Packet Driver Applications

Microsoft Windows for Workgroups 3.11

Microsoft Windows 3.1

Microsoft Windows NT 4.0

Windows 98

Windows 2000

Windows ME

Windows XP

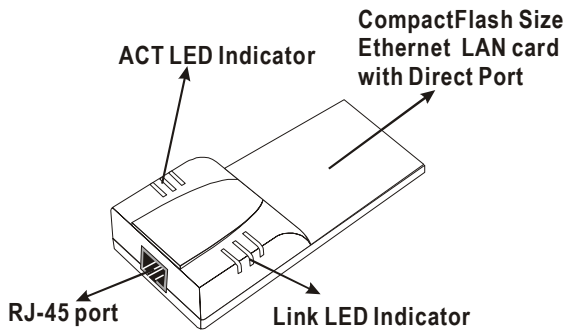
Lantastic 6.0

IBM OS/2 Warp Version 3

Hardware Compatibility for Processor Families:

Supports PDA/Palm PC using MIPS4000 series, Hitachi Sh3 series, and Hitachi Sh4 series processors.

Parts Names

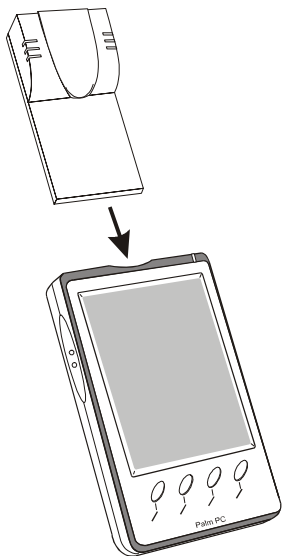


HARDWARE INSTALLATION

It's referred to "the Compact Card" for the CompactFlash Ethernet LAN Card.

Inserting the CompactFlash Ethernet LAN Card

1. Insert the CompactFlash Size Ethernet LAN Card into Windows CE-based PDA/Palm PC by aligning the Compact Card with wide connector toward the CompactFlash slot.

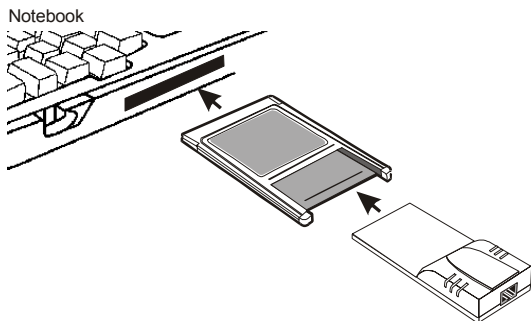


Installing into a Notebook PC (Only for users who also purchased this option)

1. Plug the CompactFlash-Size Ethernet LAN Card into the PCMCIA Adapter. The

CompactFlash Ethernet LAN Card is then turning into a conventional PCMCIA type II PC Card.

2. Align the PC Card toward the PC Card slot with brand label facing upward, as shown below.



Connecting to the Network

1. Connect unshielded twisted pair (UTP) cable to the RJ-45 connector in the Attached Port of the CompactFlash card before loading any network driver.
- For operation in the 10Mbps (10Base-T) Ethernet network, Category 3, 4 or 5 unshielded twisted pair (UTP) cable could be used to connect between the CompactFlash Ethernet LAN Card and a 10Mbps hub or switch.

Note

To remove the CompactFlash Ethernet LAN Card, please refer to the Compact Card removal instruction in the document for your PDA/Palm PC.

SOFTWARE INSTALLATION FOR WINDOWS CE 2.0/2.11/3.0

This section describes how to install the “CompactFlash Ethernet LAN Card” on a Palm-sized PC, handheld PC based on Windows CE Version 2.x or later, or on a Pocket PC based on Windows CE 3.0.

1. Establish a connection between a Windows CE based PDA/Palm PC and your Host PC, typically the Host PC runs under Windows9x/NT.
2. Install “ActiveSync” connection from the WinCE Services CD to your desktop PC. For more information, refer to the Online help.
3. Connect the PDA/Palm PC to the Host PC COM1 or COM2 port with a serial cable.
4. Once the connection between Host PC and PDA/Palm PC is established, an “Mobile device” icon will appear inside “My Computer” folder of your Host PC.
5. Insert Disk “ CompactFlash Ethernet LAN Card for WinCE”. Running **WINCE.EXE** file from floppy to install CompactFlash Size Ethernet LAN Card drivers.
6. Insert the Compact Card and reset the PDA/Palm PC thereafter. Then Configure your Compact LAN Card as follows.
7. Double click on “**Network**”, select “**property**” and choose “**Obtain an IP address through DHCP server**”. At this time, you should see “*CompactFlash Size Ethernet*

LAN Card” installed and appearing in the WinCE screen.

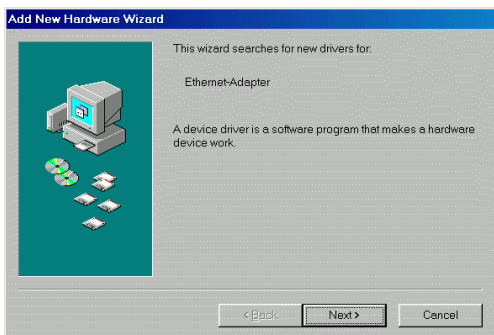
8. If your local LAN doesn't run DHCP, you may have to manually configure the IP address under “Specific an IP address” option.
9. After you have followed the procedure described above and setup the Compact Card correctly, you may now use the pocket Internet Explore to browse the Internet.

SOFTWARE INSTALLATION FOR NOTEBOOK PC (ONLY FOR USERS WHO ALSO PURCHASED THIS OPTION)

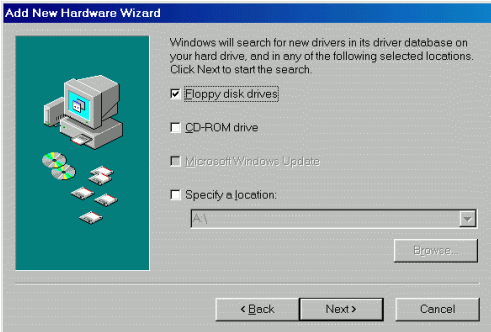
Windows 98 Installation

Make sure that the drivers of PC Card slot are well installed. The *System Icon* in the *Status Area* can report on its functionality.

1. Once the PC Card is connected to your computer, Windows will automatically detect the new device. Windows will prompt an **ADD NEW HARDWARE WIZARD** dialog box, then press **Next**.



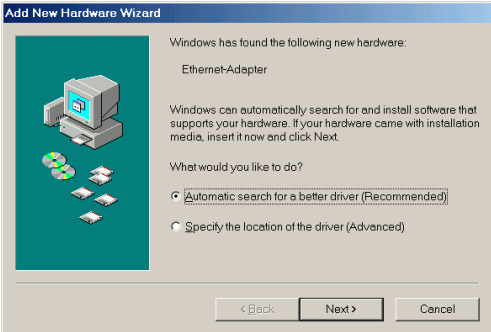
2. Select **Search for the best...** and press **Next**.
3. Select **Floppy disk drives** and insert driver diskette. Then press **Next**, the driver will be installed.



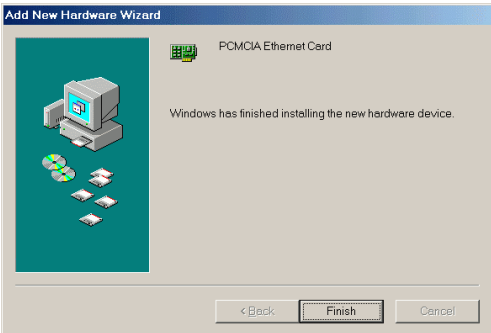
4. Click **Next** to continue. Windows will start to copy the appropriate driver to your system. If Windows asks you to supply your original Windows 98 installation CD-ROM, load it in the CD-ROM drive.
5. For the first time installation, please click **Network** icon in **Control Panel** to add Protocols, Client and Service if you needed.
6. Reboot the machine and the card will take effect.

Windows ME Installation

1. Once the PC Card is connected to your computer, Windows will automatically detect the new device. Insert the device **Driver Disk** into the floppy disk drive of your system. Select **Automatic search for a better driver (Recommended)** and click **Next**.



- 2 Windows will copy the appropriate driver to your system. If Windows ME asks you to supply your original Windows ME installation CD-ROM, load it in the CD-ROM drive.
- 3 Click **Finish** to complete the software installation.



Windows NT 4.0

1. Make sure that the Network Services

already installed in the NT 4.0 system.

2. Insert the Ethernet Adapter into one of the system's PCMCIA Slots
3. Power up Windows NT 4.0
4. Open *My Computer*
5. Open *Control Panel*
6. Run the *Network*
7. Select Adapters page
8. Press *Add* to add network adapter
9. Press *Have Disk* button
10. Insert the driver disk into drive A:
11. Specify the path to "A:\ and press OK
12. A dialog box will appear to adjust the driver's settings. The resources assignment to the adapter must be unique in the system.
13. Press OK when all settings are completed. Press Close to complete network setting.

Windows 2000 Installation

1. Connect one end of the cable for the **PCMCIA Ethernet card** to your computer and the other end to the port of the new hardware device. Windows will appear the following picture. Click **Next**.



2. Select **Search for a suitable driver for my device (recommended)**. Click Next.



3. Select **Floppy disk drives** and insert the disk associated with the PCMCIA Ethernet card in the disk drive. Click **Next**.

Found New Hardware Wizard

Locate Driver Files

Where do you want Windows to search for driver files?



Search for driver files for the following hardware device:



Ethernet Adapter

The wizard searches for suitable drivers in its driver database on your computer and in any of the following optional search locations that you specify.

To start the search, click Next. If you are searching on a floppy disk or CD-ROM drive, insert the floppy disk or CD before clicking Next.

Optional search locations:

- Floppy disk drives
- CD-ROM drives
- Specify a location
- Microsoft Windows Update

< Back

Next >

Cancel

4. Click **Next** to make Windows install the appropriate driver for the new device.

Found New Hardware Wizard

Driver Files Search Results

The wizard has located driver files for your hardware device.



The wizard found a driver for the device at the following location:



Ethernet Adapter

Windows found a driver for this device. To install the driver Windows found, click Next.



a:\net10.inf

The wizard also found other drivers that are suitable for this device. To view a list of these drivers or install one of these drivers, select the following check box, and then click Next.

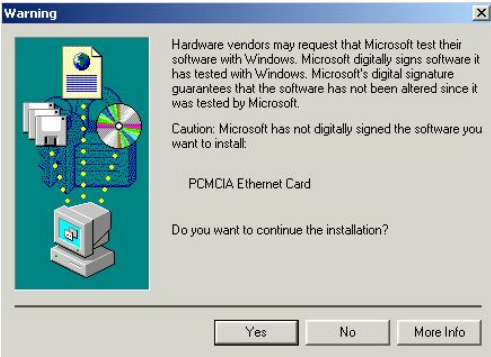
- Install one of the other drivers

< Back

Next >

Cancel

5. Click **Yes** to continue.

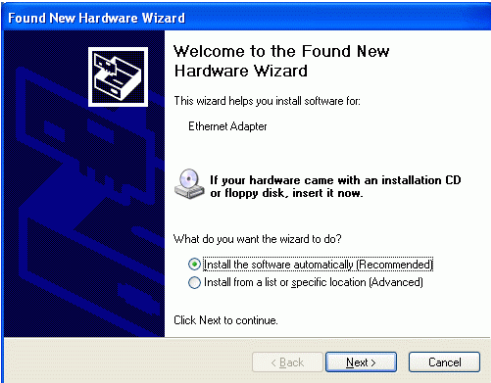


6. Click **Finish** to complete the software installation.



Windows XP Installation

- 1 Once the device is connected, Windows will automatically detect the new device. Insert the device **Driver Disk** into the floppy disk drive of your system. Click **Install the software automatically (Recommended)** and click **Next**.



2. Click **Continue Anyway** to proceed.



3. Wait while Windows copies the appropriate driver to your system.
4. Click **Finish** to complete the software installation.

Found New Hardware Wizard



Completing the Found New Hardware Wizard

The wizard has finished installing the software for:



PCMCIA Ethernet Card

Click Finish to close the wizard.

< Back

Finish

Cancel

Free Manuals Download Website

<http://myh66.com>

<http://usermanuals.us>

<http://www.somanuals.com>

<http://www.4manuals.cc>

<http://www.manual-lib.com>

<http://www.404manual.com>

<http://www.luxmanual.com>

<http://aubethermostatmanual.com>

Golf course search by state

<http://golfingnear.com>

Email search by domain

<http://emailbydomain.com>

Auto manuals search

<http://auto.somanuals.com>

TV manuals search

<http://tv.somanuals.com>