

# Panasonic

Operating Instructions  
Digital Cellular Telephone

EB-GD52




*Before operating this equipment please read these instructions completely.*





# Quick Reference

This Quick Reference guide is intended to enable the user to utilize the most basic features of the phone instantly without having to search through the extra details which are incorporated into this manual.


## Power On/Off

Press and hold 

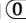
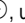

## Make Emergency Call

Press    


## Enter Pin Code

Use the keypad to enter the PIN supplied by your Service Provider, then press 




## International Dialling

Press and hold , use  to select the appropriate country code, then press 


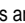
## Make a Call

Use the keypad to enter the area code and telephone number, then press 




## Add Phonebook Entry to SIM

Enter phone number and press . Press , enter name and press  twice

## Correcting an Error

Press  once to erase the previous character  
Press and hold  to remove all characters entered



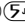
## Dial SIM Phonebook Entry

Press , then use  to select the desired number, then press 


## Redial Last Number

Press  


## What is My Number ?

Press    and the number of your phone will be displayed (SIM dependent)



## End a Call

Press  to end a call


## Set Key Guard

Press  three times and the keys will be locked to avoid accidental presses

## Answer a Call

Press any key except  or 

## Disable Key Guard

Press  twice (when **Free** is displayed) to remove the Key Guard

# Contents

<b>Getting Started</b> . . . . .	<b>1</b>
Fitting the SIM . . . . .	1
Fitting the Battery . . . . .	2
Charging the Battery . . . . .	2
Getting to Know Your Phone . . . . .	3
<b>Basic Operation</b> . . . . .	<b>6</b>
Switching the Phone On/Off . . . . .	6
Making a Call . . . . .	6
Automatic Redial . . . . .	7
Ending a Call . . . . .	7
Answering a Call . . . . .	7
Earpiece Volume Control . . . . .	7
Locking the Phone . . . . .	8
Using the PIN . . . . .	8
Setting Vibration Alert . . . . .	9
Setting Ring and Key Volume . . . . .	9
<b>Phonebook</b> . . . . .	<b>10</b>
Store a Number . . . . .	10
Browsing Phonebook . . . . .	11
Retrieve a Number . . . . .	11
Editing Phonebook Entries . . . . .	11
Grouping Phonebook Entries . . . . .	12
Personal Dial . . . . .	13
Hot Key Phone Numbers . . . . .	13
Service Dial Numbers . . . . .	13
Review the Phonebook . . . . .	14
My Numbers . . . . .	14
<b>Personalising Your Phone</b> . . . . .	<b>15</b>
Add a Start-up Greeting . . . . .	15
Displaying Animations . . . . .	15
Changing the Ring Tone . . . . .	15
Disabling all Tones . . . . .	15
Selecting Vibration Alert Type . . . . .	16
Changing the Language . . . . .	16
Restoring the Default Phone Settings . . . . .	16
<b>Phone Security</b> . . . . .	<b>17</b>
Using Key Guard . . . . .	17
Changing the Security Codes . . . . .	17
Restricting Calls . . . . .	18
<b>Applications</b> . . . . .	<b>19</b>
Clock . . . . .	19
Calculator . . . . .	21
Currency Converter . . . . .	21
<b>Short Text Messages</b> . . . . .	<b>23</b>
Setting the Phone for Text Messages . . . . .	23
Sending a Text Message . . . . .	23

Receiving Text Messages . . . . .	24
Message Options . . . . .	24
Using Pre-defined Messages . . . . .	24
Manage Messages Lists . . . . .	25
Message Parameters . . . . .	26
Cell Broadcasts . . . . .	26
<b>Call Information . . . . .</b>	<b>28</b>
Recent Numbers . . . . .	28
Call Duration . . . . .	28
Call Charges . . . . .	29
Call Identification . . . . .	29
<b>Advanced Operation . . . . .</b>	<b>30</b>
Diverting Calls . . . . .	30
Holding Calls and Call Waiting . . . . .	30
Call Transfer . . . . .	31
Multi-party Calls . . . . .	31
Changing to a New Network . . . . .	33
<b>Additional Features . . . . .</b>	<b>34</b>
Desktop Handsfree . . . . .	34
DTMF Tones . . . . .	34
Note Pad . . . . .	35
Accessory Related Features . . . . .	35
<b>Text Entry . . . . .</b>	<b>36</b>
<b>Menu Structure . . . . .</b>	<b>38</b>
<b>Trouble Shooting . . . . .</b>	<b>39</b>
Important Error Messages . . . . .	40
<b>Important Information . . . . .</b>	<b>42</b>
Safety Considerations . . . . .	42
<b>Care and Maintenance . . . . .</b>	<b>44</b>
<b>Glossary of Terms . . . . .</b>	<b>45</b>
<b>Specifications . . . . .</b>	<b>46</b>

# Getting Started

Thank you for purchasing this Panasonic digital cellular phone. This phone is designed to operate on the Global System for Mobile Communications (GSM), GSM900 or GSM1800. Ensure the battery is fully charged before use.

**Before operating this phone please read the "Important Information" section - see page 42.**

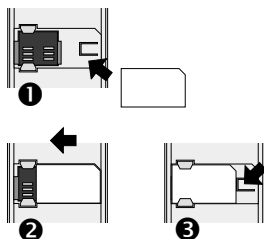
These operating instructions detail use of the equipment contained in the Main Kit. Some services detailed herein are network dependent or may only be available on a subscription basis. Some functions are SIM dependent. For more information contact your Service Provider.

## Fitting the SIM

The SIM is inserted into the back of the phone underneath the battery.

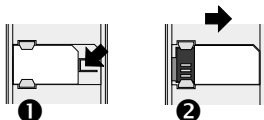
First, remove the battery cover by pushing the cover downwards - see "Removing the Battery".

Place the SIM in the recess at the rear of the phone (1) ensuring the bevelled corner is positioned in the top right corner. Slide the SIM to the left (2) using light pressure until it is located under the lugs and the SIM retaining clip has clicked into position (3).



## Removing the SIM

Ensure the SIM retaining clip is pressed down (1) and while holding this down slide the SIM to the right (2). Once clear of the lugs the SIM can be lifted out of the recess.

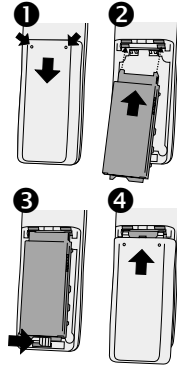


## Getting Started

# Fitting the Battery

Fit a fully charged battery pack. If the battery pack is not fully charged then it must be charged as described in the "Charging the Battery" section.

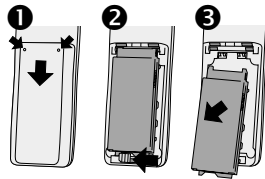
First, remove the battery cover by pressing where indicated and sliding the cover downwards (1). Ensure that the battery locking mechanism is located to the left, then insert the top of battery (label uppermost) into the battery recess (2). Place the base of the battery into the phone and push the sliding mechanism to the right locking the battery into place (3). Replace the battery cover, sliding upwards until it clicks into position (4).



## Removing the Battery

First, remove the battery cover by pressing where indicated and sliding the cover downwards (1).

Push the sliding mechanism to the left to release the battery (2). The battery can now be removed from the phone (3).



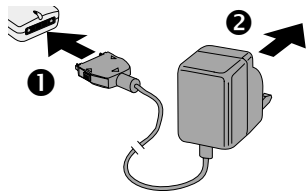
# Charging the Battery

## Connecting the AC Adaptor




The battery pack must be attached to the phone before the AC Adaptor is connected. Insert the AC Adaptor plug into the base of the phone (1).

**Note:** DO NOT force the connector as this may damage the phone and/or the AC Adaptor.

Connect the AC Adaptor to the mains power supply (2). Indicator will light and charging starts.



## Operation of Battery Level Indicator

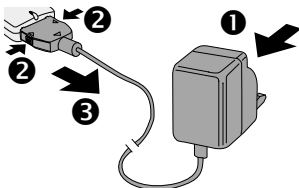
	While charging	Charging complete
Telephone on		
Telephone off		Indicator off

When charging is complete remove the AC Adaptor.

### Disconnecting the AC Adaptor

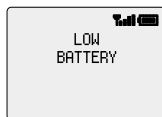
Disconnect the AC Adaptor from the mains power supply (1).

Squeeze together the two buttons on the plug of the AC Adaptor (2) and while maintaining pressure extract the plug from the base of the phone (3).



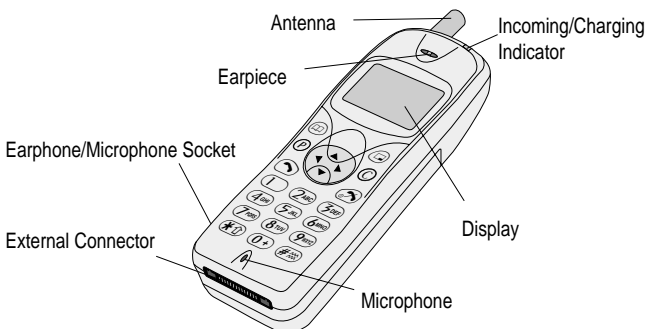
### Low Battery Warning

When the battery power is low a warning tone will sound and a blinking **LOW BATTERY** message will be displayed. If this occurs during conversation finish your call immediately. The power will be automatically shut off shortly after the warning tone. Fully charge the battery pack or replace it with a fully charged one.















## Getting to Know Your Phone

### Location of Controls





## Getting Started

-  **Navigation key** – pressing up/down/left/right scrolls through options in the main area of the display. Pressing left/right scrolls through options in the option area of the display
  -  **Select key** – selects an option in the option area of the display
  -  accesses **Phonebook** or **switches character types**
  -  provides instant access to one phone number (**Personal Dial**)
  -  **makes a call** or recalls recently dialed phone numbers
  -  **clears** the last digit entered, clears all digits when pressed and held or returns to the previous display
  -  **ends** a call or **switches the phone on/off** when pressed and held
- Digit keys**  to ,  and  – the  key will switch on and off vibration alert

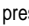
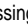

## The Menu System

The menu system provides the means for accessing all the functions which do not have their own dedicated buttons on the keypad.

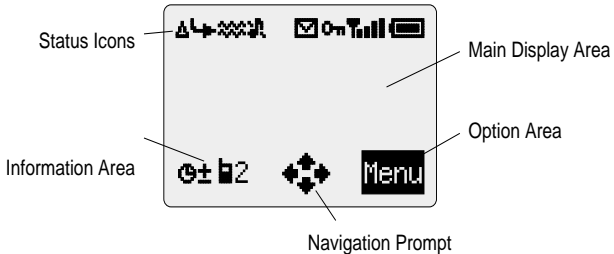
The menu functions can be selected using a combination of the **Navigation key**  and the menu **Select key** .

During a call a restricted menu will be available.

## Shortcuts

In addition, once you are familiar with the layout of the menu you can use the keypad to enter the Menu Number to quickly obtain the required function. For example, pressing  to enter the menu and then   will take you directly to the menu for changing the ring tone. Examples in these instructions use the shortcuts to gain access to the relevant functions or to the sub-menu under which other functions are located.

## Display Icons
















Following some operations the display will automatically clear after three seconds or after pressing any key.






## Status Icons

The status icons are displayed according to the currently activated functions. The Antenna, Signal and Battery icons are always displayed when the handset is switched on and connected to a network.


-  lights when you are registered to a non-home network - **roaming**
-  lights when **call divert** is enabled
-  lights when **vibration alert** is enabled
-  lights when **all tones** or **ring volume** is off
-  blinks when an **unread message** is stored or lights when **message area is full**
-  lights when **phone lock** is enabled
-  indicates that it is **possible to make emergency calls**
-  indicates the received **signal strength**:  - weak signal,  - strong signal
-  indicates the **battery level**:  - full,  (blinking) - low battery

## Information Area


This area is used to indicate the current top level menu, the sub-menu number, text entry mode, Phonebook source, Phonebook location number, or the alarm set icon depending on the current mode of operation.

-  indicates **alarm** is set
-  indicates current Phonebook entry is sourced from **Mobile Phonebook**
-  indicates current Phonebook entry is sourced from **SIM Phonebook**

## Navigation Prompt

-  This area indicates the available directions in which the **Navigation Key** can be pressed according to the current mode of operation.

## Option Area

The Option Area displays the options which can be selected by pressing the **Select key** ()

# Basic Operation

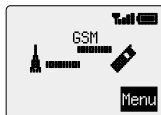
## Switching the Phone On/Off

To switch the phone on or off.

Press and hold  to switch power on


A greeting animation will be displayed and then the phone will go into **Idle** mode.

Press and hold  to switch power off



## Making a Call

Ensure that the phone is switched on, the network operator logo is displayed and the signal strength meter shows network coverage is available in the current area.

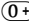

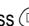

- 1 Enter area code and phone number
- 2 Press 



## International Dialling

Using the automatic international access code (+) you will be able to dial international numbers without having to know the code for the international exchange.

If the international number is known then it can be entered in the normal fashion followed by the area code and phone number.

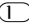




- 1 Press and hold  until + is displayed
- 2 Press  to cycle through the abbreviated international names and press  to select the required code
- 3 Enter area code and phone number
- 4 Press 



**Note:** Many countries include an initial "0" in the area code. This should, in most cases, be left out when dialling international numbers. If you have difficulties making international calls, contact your Service Provider.


## Emergency Calls



To make an emergency call the antenna symbol () must be present.

Enter     or press  when **SOS** is displayed in the option area

## Automatic Redial

When a call is unsuccessful the phone may ask if you want to redial the phone number again automatically.

Press  when **Ok** is displayed in the option area and the display will countdown in seconds to the next redial.

To stop redialling, press  when **Cancel** is displayed in the option area or press .



When a call is connected a beep will be emitted.



If a call is repeatedly unsuccessful you will not be able to automatically redial the phone number. In this case you must redial the phone number manually.


## Ending a Call

Press .

## Answering a Call

To receive a call the phone must be switched on and the signal strength meter must be displayed.

Press any key except  or .

Press  to reject the call

If a call is not answered, or is rejected, the number of unanswered calls will be displayed.

Press any key to clear the display

## Caller Identification


This feature allows you to identify incoming calls and accept or reject them. The caller's phone number, and name if stored in Phonebook, will be displayed.

**Note:** *Caller Identification may not always be available.*



## Earpiece Volume Control

The volume level may be adjusted during a call:

Press  to decrease the volume

Press  to increase the volume





Volume control for Personal Handsfree accessory is adjusted in the same manner.

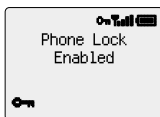


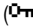
## Basic Operation

# Locking the Phone



With the Phone Lock enabled you will be restricted to answer incoming calls and make emergency calls only. The Phone Lock Code is factory set to "0000".

- 1 From **Idle** mode press    to enter the **Phone Lock** menu
- 2 Enter the 4-digit code and press 


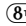





The phone will be locked and the lock icon () will be displayed.

## Unlocking the Phone

To restore normal operation, enter your Lock Code and press . The lock icon will be removed from the display. However, once you turn the phone off and on again you will need to re-enter the Lock Code, and when the correct code has been entered **Ok** will be displayed. Press .

## Disabling Phone Lock


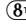



- 1 From **Idle** mode press   to enter the **Security** menu.
- 2 Press  until **Disable** is displayed in the option area
- 3 Press 
- 4 Enter the Lock Code and press 

# Using the PIN

The PIN (Personal Identification Number) protects your SIM against unauthorized use. If you enable the PIN, every time the phone is turned on you will be prompted to enter the PIN.

The PIN2 controls security for the Fixed Dial Store and Call Charge metering.

## Enabling/Disabling the PIN

- 1 From **Idle** mode press    to enter the **PIN** menu
- 2 Press  to enable/disable the PIN
- 3 Enter PIN number 

## Setting Vibration Alert

When vibration alert is switched on the phone will vibrate when a call is received. Switching on vibration alert will silence the ring volume. However, when the ring volume is adjusted after the vibration alert is switched on, the phone will ring and vibrate when a call is received.

From **Idle** mode:

Press and hold **#0000** to switch on or off. When switched on, the phone will vibrate briefly.



## Setting Ring and Key Volume

Changing either the ring volume and key volume is done in the same manner. If you increase the ring volume above maximum it will set an escalating ring tone. If you turn the ring volume off, the silent indicator icon (🔇) will be displayed.

- 1 From **Idle** mode press **[\*]** **[5 JKL]** **[2 ABC]** to enter the **Tones** menu
- 2 Use **[↑]** to select **Ring Volume** or **Key Volume** and press **[\*]**
- 3 Use **[↑]** to set the volume level and press **[\*]**



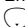


# Phonebook

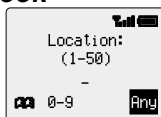
Phone numbers can be stored in two locations. You can store numbers in the SIM Phonebook (therefore the number of locations, length of name and number of phone numbers are SIM dependant). Alternatively you can store phone numbers in the Mobile Phonebook, this means that if you change the SIM the numbers in the phone are not lost.


The Mobile Phonebook has the advantage that you can group your phonebook entries together.

## Store a Number









### ***To Store a Number in the SIM Phonebook***


- 1 From **Idle** mode enter the phone number and press 
- 2 Press  to select the SIM Phonebook
- 3 Enter the name – see “Text Entry” page 36, and press 
- 4 Confirm phone number and press 
- 5 Enter location number and press 



You can choose not to enter a location number and the entry will be placed in the next available location. Simply press  when **Any** is displayed in the option area.


### ***To Store a Number in the Mobile Phonebook***

- 1 From **Idle** mode enter the phone number and press 
- 2 Use  to select the Mobile Phonebook and press 
- 3 Enter the name - see “Text Entry” page 36, and press 
- 4 Confirm phone number and press 
- 5 Use  to select a group - see “Grouping Phonebook Entries” page 12 - into which to place the entry and press 
- 6 Enter location number and press 

You can choose not to enter a location number and the entry will be placed in the next available location. Simply press  when **Any** is displayed in the option area.

### ***Overwrite Protection***


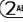




If a location is occupied you will be prompted to confirm that you wish to overwrite the current information.

Press  to overwrite the selected location

Press  to choose another location number



## Browsing Phonebook


You can search the Phonebook by either Name or Location. The default setting for browsing is by name. When browsing by name pressing a lettered key will take you to the first entry starting with that letter.


- 1 From **Idle** mode press   to enter the **Phonebook** menu
- 2 Use  to toggle between **Names** or **Loc'ns** display mode and press 
- 3 Use  to select the Phonebook you wish to browse and press 

## Retrieve a Number



From **Idle** mode:

- 1 Press 
- 2 Use  to browse through the Phonebook

Once you have selected a phone number or name, there are a number of actions that you can perform. To dial the selected number press .



**Note:** The Phonebook you last viewed will be the default when you next press . To change the default, use the Phonebook menu to select a particular phonebook.

### **Speed Dial a Number Stored in SIM Phonebook**

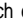
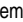

- 1 Enter location number – leading zeros may be left out
- 2 Press 
- 3 Press 

## Editing Phonebook Entries

You can Detail, View, Recall, Edit, Delete or Create in the Phonebook. To access any of these functions you follow the same procedure. With a phone number or name displayed:

- 1 Use  to cycle through **Detail**, **View**, **Recall**, **Edit**, **Delete** or **Create**
- 2 Press  to select an option

### **Detail**

Displays each element of the selected Phonebook entry. Use  to display the next/previous element of the entry. Each element may be edited - use  until **Edit** is displayed in the option area and press .

### **View**


Displays an individual name and phone number in the names list.

## Phonebook

### **Recall**

Displays the phone number, enabling you to either change it or call the number.

### **Edit**

Displays the entry allowing you to make changes as required. Press  to save any changes.

### **Delete**

Deletes the entry from the Phonebook.

### **Create**








Creates a new entry in the Phonebook

## Grouping Phonebook Entries


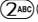





The ability to group phonebook entries together is an extra function of the Mobile Phonebook.

### **Retrieving a Number from a Group**

Groups are used to collect together types of Phonebook entries, for example business and personal. Each group can be suitably titled for quick access to the entries contained within.

- 1 From **Idle** mode press    to enter the **Group Settings** menu
- 2 Use  to select the group and press 
- 3 Use  to select the entry required and press  to recall the number.

### **Retitling Group Names**


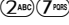


- 1 From **Idle** mode press    to enter the **Group Settings** menu
- 2 Use  to select the group
- 3 Use  until **Edit** is displayed in the option area and press 
- 4 Clear the current title and re-enter - see "Text Entry" page 36
- 5 Press 



## Personal Dial


The **P** key can be defined to recall your favourite phone number in preparation for initiating a call.

### **Setting the Personal Dial Number**

- 1 From **Idle** mode press   to enter the **Personal Dial** menu
- 2 Enter the name - see "Text Entry" page 36, and press 
- 3 Enter the phone number and press 

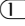
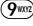

### **Using Personal Dial**

From **Idle** mode:



Press **P** to recall the number, then press  to initiate a call

## Hot Key Phone Numbers

It is possible to dial phone numbers from the Phonebook or Service Dial part of Phonebook very quickly. Some Hot Key Phone numbers may be reserved by the Service Provider, for example the first three Hot Key Phone numbers may be linked to Service Dial (network dependent).



- 1 Press and hold a Digit key  to 
- 2 Press 

### **Setting the Hot Key Dial Source**

- 1 From **Idle** mode press   to enter the **Hot Key Dial** menu
- 2 Use  to select **SIM Phonebook** or **Mobile Phonebook** and press 

## Service Dial Numbers

Your Service Provider may program some special phone numbers into your SIM (network dependent). It is not possible to modify the Service Dial numbers.

- 1 Press and hold 
- 2 Press  to browse through the Service Dial list of phone numbers

The phone number pointed to can only be recalled or dialled.


## Phonebook

# Review the Phonebook

The **Review** function in the Phonebook menu shows how many locations are available in the Phonebook.





- 1 From **Idle** mode press    to enter the **Review** menu
- 2 Use  to select **SIM Phonebook** or **Mobile Phonebook** and press 

A summary of the selected Phonebook will be displayed.

- 3 Use  to gain a detailed view of the Phonebook locations. Occupied locations are shown with "■".

# My Numbers

**My Numbers** is a convenient part of Phonebook where your voice, fax and data phone number(s) can be stored and viewed. This function is SIM dependent.

- 1 From **Idle** mode press    to display the number
- 2 If more than one number is available then use  to cycle through the listed numbers

# Personalising Your Phone

## Add a Start-up Greeting

A personalised greeting can be programmed for when the phone is switched on.

- 1 From **Idle** mode press to enter the **Greeting** menu
- 2 Use the text entry facility to add your greeting and press - see "Text Entry" page 36

## Displaying Animations

Animations can be displayed when the phone is switched on.

- 1 From **Idle** mode press to enter the **Animation** menu
- 2 Use to cycle through the animated themes available
- 3 Press to select either the desired theme, or disable the animation



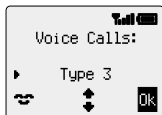
## Changing the Ring Tone

The ring tones of the phone can be changed to one of many pre-defined sounds or to a voice ringer (a voice recording used as a ring tone).

### Setting up a Pre-defined Ring Tone

You can choose from a selection of tones and melodies.

- 1 From **Idle** mode press to enter the **Ring Type** menu
- 2 Use to cycle through the ring types
- 3 Press to select the desired ring tone



### Recording a Voice Ringer

- 1 From **Idle** mode press to enter the **Voice Ringer** menu
- 2 Press and start speaking into the microphone to record your voice. The recording will stop automatically after 5 seconds, or before if is pressed.
- 3 To playback the recording press






## Disabling all Tones

- 1 From **Idle** mode press to enter the **All Tones** menu
- 2 Press to disable all tones and the silent indicator icon () will be displayed.

Repeat the process to enable all tones.

### Selecting Vibration Alert Type



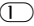




The vibration alert facility may be set to vibrate continuously or intermittently.

- 1 From **Idle** mode press    to enter the **Vibration Alert** menu
- 2 Use  to select the type of vibration desired and press 

Once recording is complete for a second time the display will indicate if the recording was successful or not.





### Changing the Language

It is possible to change the language that the phone uses for either the display messages and/or for text entry.

- 1 From **Idle** mode press    to enter the **Language** menu
- 2 Use  to select **DisplayLanguage** or **Tegic Language** (text entry) that you wish to change and press 
- 3 Use  to select the desired language and press 

### Restoring the Default Phone Settings

Any personal settings can be returned to their factory default, with the exceptions of the Phone Lock code and the Language.


- 1 From **Idle** mode press    to enter the **Defaults** menu
- 2 Press  to restore the default settings

# Phone Security

The phone features a number of security functions that protect against unauthorized use, and enable you to restrict access to certain features - see "Using the PIN" page 8. It is recommended that you memorize your security codes. If you need to make a note of your security codes, never write them in a way that they can be recognized by another person. If you forget them contact your dealer for the Phone Lock Code or your Service Provider for PIN and PIN2.

## Using Key Guard


The **Key Guard** function is used to prevent any keys from being accidentally pressed e.g. when the phone is being carried.

From **Idle** mode press  three times to enable Key Guard











When a call is received Key Guard will be disabled temporarily, allowing you to press any key to answer the call. Emergency calls can still be made.

### **Disabling Key Guard**

When **Free** is displayed in the option area press  twice


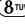
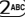


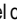


## Changing the Security Codes

- 1 From **Idle** mode press   to enter the **Security** menu
- 2 Use  to select **Phone Lock, PIN** or **PIN2**
- 3 Use  until **Change** is displayed in the option area and press 
- 4 Enter the current code and press 
- 5 Enter the new code and press 
- 6 Verify the new code and press 

# Restricting Calls


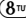
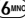


## Call Barring

The **Call Bar** function is used to restrict certain outgoing and/or incoming calls. Call Bar is controlled by a security password that is supplied by your Service Provider. When updating or checking the status of Call Bar the phone must be registered with a network. Different Call Bar restrictions can be used for voice, fax and data calls. Any combination of call restrictions can be set.

- 1 From **Idle** mode press    to enter the **Call Bar** menu
- 2 Use  to select **Bar Voice**, **Bar Fax** or **Bar Data** and press 
- 3 Use  to select level of call barring that you wish to apply and press 
- 4 Enter Call Bar password and press 

## Barred Dialling

The **Barred Dial** function enables you to bar all phone numbers pre-programmed in the SIM from being dialled on the phone. To use this function PIN2 is required.

From **Idle** mode press    and press  to enable **Barred Dial**, enter PIN2 and press 

## Fixed Dial

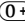
The Fixed Dial Store is part of Phonebook, but with additional security. When the security feature **Fixed Dial** is enabled it is only possible to make calls with phone numbers that are in the Fixed Dial Store.

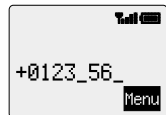
When **Fixed Dial** is enabled any manually dialled phone numbers must match a phone number in the Fixed Dial Store.

To store, edit or delete a phone number in the Fixed Dial Store the **Fixed Dial** function must be enabled. With **Fixed Dial** enabled, all phone numbers can be added, edited or deleted as normal, but you will be prompted for PIN2.

## “Wild” Numbers

Wild numbers are spaces that can be stored in a phone number. The “wild” numbers must be filled before the phone number is dialled. Used in conjunction with Fixed Dial calls can be restricted, for example, to a specific area by storing the area code of a phone and when recalled the remainder can be added. The “wild” numbers can be anywhere within a stored phone number.

- 1 Press and hold  until \_ is displayed to enter a wild number
- 2 When the phone number is recalled pressing a numeric key will fill in a “wild” number.



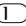






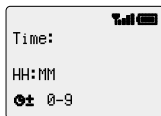
# Applications

## Clock





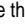

This phone incorporates a clock with date/time, an alarm and a power on/off feature.

### Initially Setting the Home Time









- 1 From **Idle** mode press     to enter the **Clock Set** menu and press 
- 2 Enter the digits for the date in the format day/month/year and press 
- 3 Enter the digits for the time using 24 hour clock and press 



### Setting the Clock Format

- 1 From **Idle** mode press     to enter the **Clock Format** menu
- 2 Press  to cycle through the different clock and/or date formats
- 3 Press  to select the desired clock display type



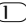





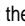



### Altering the Time/Date

- 1 From **Idle** mode press     to enter the **Clock Set** menu
- 2 Press and hold  to remove the current date
- 3 Enter the digits in the format day/month/year
- 4 Press  to accept the date
- 5 Press and hold  to remove the current time
- 6 Enter the digits using 24 hour clock and press 


### Setting the Alarm

If you have not already set the clock, you will be prompted to do so prior to setting the alarm.

There are four separate alarms, each of which may be set independently.

- 1 From **Idle** mode press     to enter the **Alarm Set** menu and press 
- 2 Use  to select the alarm to be set and press 
- 3 Enter the digits for the time and press 
- 4 Use  to select the frequency of the alarm and press 
- 5 Use  to select the ring type and press 



Once the alarm has been set,  will be displayed in the information area when the phone is in **Idle** mode.

## Applications


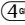







### Muting the Alarm

When the set time is reached the alarm will sound and the display will flash with an alarm message. The alarm will sound for 30 seconds. If the alarm is due during a call, it will activate vibration alert.

To end the alarm:


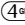











Press any key

### Disabling the Alarm

- 1 From **Idle** mode press     to enter the **Alarm Set** menu and press 
- 2 Use  to select the alarm to be disabled and press  twice
- 3 Use  until **Disabled** is displayed and press 

Once disabled, following the same procedure will re-enable the alarm.

### Adjusting the Alarm Time

- 1 From **Idle** mode press     to enter the **Alarm Set** menu and press 
- 2 Use  to select the alarm to be adjusted and press 
- 3 Press and hold  to remove the current alarm time
- 4 Enter the digits for the time and press 
- 5 Press  to select the frequency of the alarm and press 
- 6 Use  to select the ring type and press 

### Setting a Power On/Off Time

You can set your phone to turn itself on or off automatically at a specified time using the Power On/Off feature. The procedure for setting/adjusting the Power On/Off automatically is similar to that for setting the time on the clock. For either setting or adjusting the time you need to select **Power On Time** or **Power Off Time** in the **Clock Function** menu.

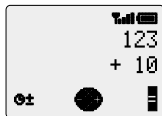
**Caution:** Ensure that the setting of the Power On function will not contravene any regulations whereby it may automatically power on when in an aircraft or medical facility etc. - see "Important Information" page 42.



# Calculator

The four function calculator will enable you to perform simple arithmetic calculations (addition/subtraction/multiplication and division).

- 1 From **Idle** mode press to enter the **Calculator** menu
- 2 Enter a number (maximum 10 digits) and it will be displayed on the lower line
- 3 Use to select the arithmetic operation you wish to perform ( to multiply, to add, to divide, to subtract)
- 4 Enter a number (maximum 10 digits) and it will be displayed next to the operation symbol
- 5 If you use to select another arithmetic operation to perform, an intermediate calculation will be performed and the result displayed on the upper line
- 6 Press to complete the calculation when is displayed in the option area



**Note:** Press and hold to add a decimal point.

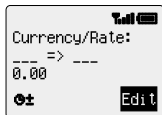
# Currency Converter

The currency convertor enables you to convert from/to a home currency using a conversion rate that you enter.

From **Idle** mode press to enter the **Currency** menu

## Entering an Initial Conversion Rate

- 1 Press
- 2 Enter a country code for the home currency (up to 3 characters) and press
- 3 Enter a country code for the foreign currency (up to 3 characters) and press
- 4 Enter the currency conversion rate and press



**Note:** Press and hold to add a decimal point.

## Converting a Value




- 1 Check the conversion rate is the one you require and press
- 2 Enter the value to be converted and press

The country code and currency rate will be retained in the phone once entered. The next time you use the convertor you can edit the conversion rate/country codes while in the Currency/Rate display. Use until **Edit** is displayed in the option area and press .

## Applications

### ***Swapping the Currency Conversion***

When you have accepted the conversion rate and are ready to enter the value to be converted, you can swap the currencies to convert from the foreign currency into the home currency.

- 1 Use  until **Swap** is displayed in the option area and press .
- 2 Enter the value for conversion and press .

# Short Text Messages

You can receive, display, edit and/or send short text messages, of up to 160 characters to mobile phones on the same network or any network that has a roaming agreement.

## Setting the Phone for Text Messages

Before you can send a message you must enter the Message Centre number into Parameters (your Service Provider will supply the Message Centre number).

The Message Centre number may have been preprogrammed, on your SIM card.

### Setting the Message Centre Number

- 1 From **Idle** mode press to enter the **Message Centre** menu and press
- 2 Enter message centre number in international dial format – see “International Dialling” page 6

## Sending a Text Message

- 1 From **Idle** mode press to enter the **Create** menu and press
- 2 Enter the message (up to 160 characters) – see “Text Entry” page 36 and press



You will be prompted if you wish to send the message, if you do not wish to send the message press , the message will be stored.

- 3 Press and enter the destination phone number (or recall a number from the Phonebook) - see “Retrieve a Number” page 11 and press
- 4 Press
- 5 You may be asked if you wish to have delivery confirmation, if you want confirmation press . If you do not, use until **No** is displayed in the option area, then press

The default setting for delivery confirmation can be enabled/disabled using the **Report** parameter in the **Short Message** menu.

- 6 Use to select a melody type, if required, and press

# Receiving Text Messages

When a Short Text Message is sent to your phone the message indicator (✉) will blink in the display, with an audible tone or vibration. This indicates that a new message has been received.

When **Read** is displayed in the option area press (☐) to read the message. Use (⦿) to navigate through the message and to identify the sender of the message.



**Note:** If the message indicator is displayed constantly (does not blink) this indicates that the message area is full and you will need to delete old messages in order to be able to receive new messages in the future.

## Message Options

### Reply to a Message

When you have received and read a message you may wish to reply to the sender. This is the default setting in the option area and pressing (☐) will allow you to create a reply message.

### Delete a Message

While reading a message use (⦿) until **Delete** is displayed in the option area. Press (☐) twice to delete the message. To enable the auto-deletion of messages - see "Message Parameters" page 26.

### Edit a message

While reading a message use (⦿) until **Edit** is displayed in the option area. Press (☐) and make any amendments. Pressing (☐) will give you the option to send the edited message - see "Sending a Short Text Message" page 23. Press (C) if you do not wish to send the message and it will be stored in the **Send List**.

## Using Pre-defined Messages

Pre-defined messages can be sent immediately or they can be used as a basis for a longer message and edited accordingly.



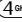

- 1 From **Idle** mode press (☐) (3 DEF) (3 DEF) to enter the **Create** menu
- 2 Use (⦿) to point to the pre-defined message you wish to use and press (☐)
- 3 Use (⦿) to navigate through the message and add any extra text – see "Text Entry" page 36

When complete the message can be sent - see "Sending a Text Message" page 23



## User Defined Message

### Creating a User Defined Message

It is possible to create a user defined message which, once generated, can be used as any other pre-defined message.

From **Idle** mode press   . Edit the message as required and press .

### Selecting the User Defined Message

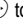



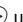

From **Idle** mode press   .

The user defined message will be displayed at the top of the list of pre-defined messages.

Use  until the  prompt is adjacent to the message and press .

### Changing the Pre-defined Message Language

With the pre-defined message highlighted:


- 1 Use  to select **Lang** in the option area and press .
- 2 Use  to select a language and press .
- 3 Use  until **Select** is displayed in the option area and press  twice to send the message

## Manage Messages Lists

All messages, whether sent or received, will be stored on the SIM until they are deleted. Selecting a stored message allows it to be replied to, edited or deleted.

### Receive List

Messages received will be stored in the **Receive List**. A blinking "\*" indicates an unread message.

When reading a message the sender's information is displayed below the text indicating the time the message was sent and the message centre number. Pressing  allows you to reply to the message.

### Send List




When a message has been sent or edited it will be stored in the **Send List**.

### Review

**Review** allows you to check usage of the message area.

## Short Text Messages

# Message Parameters

From **Idle** mode press    to enter the **Parameters** menu. The following parameters can be set:

### ***Auto Delete***

When set will erase messages automatically:

**Received Read** - will overwrite the oldest read message

**Received Any** - will overwrite the oldest message even though it may not have been read.

### ***Lifetime***

This is the duration that your message is stored at the Message Centre. Delivery attempts will be repeated until the message has been delivered or the Lifetime expires.

### ***Message Centre***

Allows the Message Centre phone number to be edited - see "Setting the Phone for Short Text Messages" page 23.

### ***Report***

When your message has been delivered a confirmation will be received if **Report** is set to **Yes**.

### ***Protocol***








The Message Centre may be able to convert the message to the format specified by the selected protocol.

## Cell Broadcasts

Cell broadcasts are general information that is sent to your phone by a network operator. The information can include topics like local traffic reports, weather etc.

### ***Setting Broadcast Topics***

You need to specify the topic(s) of information that you wish to receive as broadcasts before you can receive them.

- 1 From **Idle** mode press     to enter the **Topics** menu
- 2 When **Insert** is displayed in the option area press 
- 3 Use  to cycle through the available topics and press  to insert the currently displayed topic into your broadcast list

### ***Enabling/Disabling Broadcasts***

- 1 From **Idle** mode press     to enter the **Receive** menu
- 2 Press 

Once enabled, following the same procedure will disable broadcasts.

### ***Message List***

This is a store for the last received broadcast messages. Messages can be deleted from here.

### ***Language***

The **Language** in which broadcast messages are displayed can be changed (network dependent).

# Call Information






## Recent Numbers

Recently dialled phone numbers will be stored in **Last Dialed**.


If Caller Identification is available the caller's phone number for an answered call will be stored in **Answered** and an unanswered call will be stored in **Unanswered**.

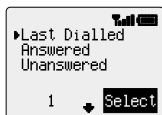
If Caller Identification is not available then calls will still be stored but will have the date and time attributed to them.

When the store is full the next phone number will overwrite the oldest.

- 1 Press 
- 2 Use  to select **Last Dialed**, **Answered** or **Unanswered** and press 
- 3 Use  to select the phone number (or name) you wish to redial and press 

You can edit or delete the phone number before dialling – see “Editing Phonebook Entries” page 11.

If you wish to store the selected number in Phonebook, press  while the number is displayed – see “Store a Number” page 10.






## Calling the Last Dialed Number





To redial your last called phone number press  

## Returning an Unanswered Call

When the display shows that you have received calls but not answered them.

- 1 Press 
- 2 The last caller's phone number will be displayed if it is available
- 3 Press  to select the phone number you wish to dial
- 4 Press 

## Call Duration

- 1 From **Idle** mode press   to enter the **Call Service** menu
- 2 Use  to select one of the functions described below, and press 

The **Last Call** function will display the duration and call charge, if available, of the last call during **Idle** mode or the current call during a call. Times are indicated as: hours (0-99), minutes (0-59), seconds (0-59) - HH:MM:SS.

The **All Calls** function displays the accumulated duration and call charge, if available, of incoming and outgoing calls. The lock code or PIN2 is required to reset the timer and call charge.





## Call Charges



To maintain control over the cost of calls that are made, the phone can be set to restrict use to a finite number of units overall.

### Setting the Unit Price



Firstly, a price per unit must be entered. This is the cost that the Service Provider charges for one unit of call time.

- 1 From **Idle** mode press  **6MNO** **6MNO** **2ABC** to enter the **Price/Unit** menu
- 2 Press  to edit the values


At this point you will be asked to enter your PIN2.

- 3 Enter a currency unit (up to three characters) and press 
- 4 Enter a price and press 

### Setting the Maximum Unit Level

- 1 From **Idle** mode press  **6MNO** **6MNO** **3DEF** to enter the **Max Cost** menu
- 2 Press  to edit the values




At this point you will be asked to enter your PIN2.

- 3 Enter a value (number of units) which is to be the maximum permitted, and the corresponding cost will be displayed
- 4 Press  to accept

**Note:** The duration of one unit may vary during the day, peak and off-peak times. Therefore, the call charge can be calculated accordingly. However, call charge information may not give an accurate reflection of the tariffs charged by your Service Provider.

### Setting a Warning Level

A warning can be set as an indication that the maximum cost is about to be reached.

- 1 From **Idle** mode press  **6MNO** **6MNO** **4GHI** to enter the **Warning at** menu
- 2 Press  to edit the value
- 3 Enter a value (in units) at which time you would like the warning to sound and press 

## Call Identification



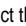

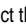


In the **Call Service** menu, the **Caller's ID** and **Withhold ID** functions allow you to check the status of whether a Caller's Identification is sent or can be received.

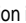
**Note:** When checking the status the phone must be registered with a network.

# Advanced Operation

## Diverting Calls

Voice, fax and data calls can be diverted using different circumstances and to different numbers. For example you may wish voice calls to be diverted to Voicemail in the event that the phone is switched off.



- 1 From **Idle** mode press   to enter the **Call Divert** menu
- 2 Use  to select the type of calls to divert and press 
- 3 Use  to select the circumstances to initiate the divert and press 
- 4 Enter phone number to divert to and press 

When a divert situation is enabled the divert icon () is displayed.


When updating or checking the status of **Call Divert** the phone must be registered with a network.

## Holding Calls and Call Waiting

### *Holding/Resuming a Call*

- 1 Press  when **Hold** is displayed in the option area
- 2 Press  when **Resume** is displayed in the option area

### *Making a Second Call*


- 1 Enter phone number (or recall from Phonebook – see “Retrieve a Number” page 11)
- 2 Press 

The first call will be placed on hold.

### *Receiving a Second Call*



A second call can be received, if **Call waiting** is switched on. This is enabled from the **Call Service** menu. It is not possible to have more than one fax or data call. All voice calls must be ended before you can make or receive a fax or data call.

### *Accept a Second Call*




Press  when **Accept** is displayed in the option area

The current call will be placed on hold.

### *Reject a Second Call*

- 1 Press  to display **Reject** in the option area
- 2 Press 


## End Current Call and Receive Second Call

- 1 Press  with a waiting call
- 2 Press any key except  or 

## Operation During Two Calls

### Swapping Between Calls

The   prompt indicates the current call

Press  when **Swap** is displayed in the option area

### End Current Call

- 1 Press  to display **End** in the option area
- 2 Press 

The held call will remain held.



### End Both Calls

Press 

## Call Transfer

With two calls connected, Call Transfer enables you to connect them together ending your connection, leaving the other parties to talk together without you.

When you have two calls:

- 1 Press  to display **Trans.** in the option area
- 2 Press 

The two calls will be connected to each other and your call will be ended.



**Note:** Two call transfer cannot be utilized while in Multi-party mode.

## Multi-party Calls

A Multi-party call enables three to five people to be in conversation at the same time. It is possible to swap between a Multi-party call and another call in the same way as with two separate calls.

### Enabling Multi-party

With two calls connected (one active, one on hold):

- 1 Press  to display **Merge** in the option area
- 2 Press 

A Multi-party call has been enabled, all three people will be able to talk to each other.

## Advanced Operation

### **Adding to Multi-party**



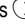
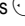

You can add to the Multi-party call (up to a maximum of five). Either by making a call or accepting an incoming call. The call can then be merged into the Multi-party.

**Note:** When making a call or accepting an incoming call the Multi-party call will be placed on hold. The callers in the Multi-party call can continue to communicate with each other while on hold.

### **Splitting a Multi-party**

You can select an individual from the Multi-party and remove their connection. This enables you to talk privately without the participation of the rest of the Multi-party.

During a Multi-party call:

- 1 Use  until **Option** is displayed in the option area and press 
- 2 Press  to select a caller in the Multi-party
- 3 Press  to display **Split** in the option area
- 4 Press 




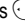

The selected caller will be split from the Multi-party call and the Multi-party call will be placed on hold (the remaining Multi-party call callers can still communicate).

### **Ending Multi-party Calls**

You can either select an individual in the Multi-party and end the call or end the entire Multi-party call. If a call is held, or an other call is incoming then an individual call cannot be ended.


### **Ending a Single Connection**

During a Multi-party call

- 1 Press  to display **Option** in the option area and press 
- 2 Press  to select a caller in the Multi-party
- 3 Press  to display **End** in the option area
- 4 Press 

### **Ending a Multi-party Call**

During a Multi-party call:

Press  to end all the calls at once

## Changing to a New Network

When not in your home country you may use a network that you do not directly subscribe to, this is called ROAMING. National Law may not permit roaming in your home country.

The **New Network** function is used to manually select a network that is available in your current location.

- 1 From **Idle** mode press    to enter the **New Network** menu
- 2 Use  to select one from the list of available networks and press 

An **X** will be displayed in the information area if you cannot register with the selected network.

When the **Search Mode** is set to **Automatic** the phone will automatically reselect a new network in order to maintain optimum network availability. With the **Search Mode** set to **Manual** the phone will only use a selected network. If coverage is lost another network should be selected.

The **Network List** is used when the Search Mode has been set to **Automatic**. The location numbers in the Preferred Network List show the search priority.

Selecting **Insert** stores a new network in the currently displayed location and then moves other networks down, **Edit** overwrites the old network with a new one, and **Add** stores a new network at the end of the list

# Additional Features



## Desktop Handsfree

Desktop Handsfree enables you to hold a conversation without having to hold the phone to your ear.


**Note:** Do NOT hold the phone to your ear in Handsfree mode.

### **Swapping Between Handsfree and Handheld Calls**


During a Handheld call:

- 1 Use  to until **H'free** is displayed in the option area
- 2 Press 

During a Handsfree call:

Press  to revert to Handheld operation

### **Answering a Call Handsfree**

Pressing and holding  will allow the call to be answered Handsfree.

## DTMF Tones

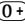

DTMF tones can be sent during conversation. These are often used to access voice mail, paging and computerized home banking. For example, you may need to input a number to remotely access voice mail messages. A phone number may be stored in the Phonebook with DTMF tones, allowing the number to be dialled upon recall and the DTMF number to be sent automatically.

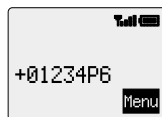
### **Send DTMF Tones During a Call**


Enter digits (0 to 9, # and \*)

#### **Pause Dial**

Using pauses allows you to send DTMF tones automatically.

- 1 Enter phone number
- 2 Press and hold  until a **P** is displayed
- 3 Enter DTMF digits after the pause, e.g. enter the number to access voice mail messages.
- 4 Press 



When the call is successful DTMF tones will be sent after 3 seconds or when  is pressed.


If the DTMF tones are unsuccessful then the destination of your call may require that the length of the tones be increased.


- 1 From **Idle** mode press    to enter the **DTMF Length** menu
- 2 Use  to set to **Long** and press 

## Note Pad

During a call you can enter numbers which you may wish to dial when the call has ended.

During a call:

- 1 Enter phone number
- 2 When the call has ended press  to call that number

To store in Phonebook, press  while the number is displayed – see “Store a Number” page 10.

## Accessory Related Features

When **Auto Answer** is switched on, and Personal Handsfree is connected, a call will be answered without pressing any keys.

This is also applicable to the Handsfree Car Kit accessory.

***See the documentation provided with the relevant Accessory for operational details.***

# Text Entry

The phone provides a means for entering alphanumeric characters to enter details into the Phonebook, to create text and e-mail messages etc. This section details the characters that can be entered and the relevant keys to press.

Key	Text Mode				
	T9®	Normal (ABC)	Greek (ABΓ)	Extended (AĂĂ)	Numeric (0-9)
0+	Alternatives				0+P_
1	Punctuation	space"@,,:!;?¿()[]{}'&%+/\^~ <>=		£\$¥¤§	1
2 <sup>ABC</sup>	abc	ABCabc		AĂĂÆBCCÇaăăæàâc	2
3 <sup>DEF</sup>	def	DEFdef		DEÉFdeéèf	3
4 <sup>GHI</sup>	ghi	GHIghi		GHIghii	4
5 <sup>JKL</sup>	jkl	JKLjkl		JKLjkl	5
6 <sup>MNO</sup>	mno	MNOmno		MNÑOÖømnñöøò	6
7 <sup>PQRS</sup>	pqrs	PQRSpqrs		PQRSpqrsß	7
8 <sup>TUV</sup>	tuv	TUVtuv		TUÜVtuüùv	8
9 <sup>WXYZ</sup>	wxyz	WXYZwxyz		WXYZwxyz	9
*⌵	Shift/Lock*	*	*	*	*
#⌶	Space	#	#	#	#

\* Press **\*⌵** once to enter a single capital letter (subsequent characters will be lower case). Pressing **\*⌵** twice acts as a keyboard CAPS LOCK function and subsequent characters will be uppercase, until **\*⌵** is pressed for a third time returning to lowercase character entry.

## T9® Text Input

Using this mode of text entry dramatically reduces the number of key presses required:

Press a key once for any letter you require on that key. **The desired letter may not be displayed.** Continue pressing other keys until the end of a word is reached; then check that the word has been typed correctly before continuing on to the next word.



If the combination of letters typed has produced a word which is not the one you require, press **(O+)** repeatedly until the correct word is displayed. Continue to the next word.

If the word you require is not in the internal dictionary (i.e. It is a proper noun or a rarely used word) then it should be entered using the Normal (ABC) mode.

### ***Other Text Modes***




To access any of the other text entry modes use **(☐)** to cycle through until the desired mode is displayed in the Information Area.

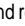
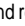

When using Normal (ABC), Greek (ΑΒΓ) or Extended (AÄÅ) text entry modes, each time a key is pressed in quick succession it will display the next character available on that key (or if the key is pressed and held down it will cycle through the available characters). Releasing the key, or pressing another key will enter the currently displayed character and the cursor will move to the next position.

### ***Editing Text***

Pressing **(↑)** will move you up or down one text line (or field in Phonebook). Pressing **(←)** will move you left or right one character (or to the first character of the previous or next word when using T9® text entry mode). When the cursor is moved over a character and another key pressed this will insert the new character immediately before the selected character. Pressing **(C)** will delete the character to the left of the cursor or delete the current line when pressed and held.

# Menu Structure

From **Idle** mode pressing  will display a menu of phone features. To select a feature press  so that the pointer is showing next to the feature that you require then press .

To exit the current menu and return to the previous level press . To exit completely out of the menu structure, press and hold , or  (except during a call).

## 1 Key Guard

### 2 Phonebook

- Browse
- Create
- Group Setting
- Review
- My Numbers
- Hot Key Dial
- Personal Dial

### 3 Messages

### 4 Applications

- Clock Function
- Calculator
- Currency

- Clock Set
- Clock Format
- Alarm Set
- Power On Time
- Power Off Time

- Receive List
- Send List
- Create
- User Defined Msg
- Review
- Parameters
- Broadcasts

### 5 Personalise

- Language
- Tones
- Display Setting
- Vibration Alert
- Auto Answer
- DTMF Length
- Defaults

- Display Language
- Tegic language

- Greeting
- Contrast
- Animation

- All Tones
- Ring Volume
- Ring Type
- Voice Ringer
- Key Volume
- Warning Tone

### 6 Call Service

### 7 Call Divert

### 8 Security

- Phone Lock
- Call Bar
- PIN
- PIN2
- Fixed Dial
- Barred Dial

- Voice Calls
- Fax Calls
- Data Calls
- Cancel All
- Status

- Bar Voice
- Bar Fax
- Bar Data
- Cancel All
- Status
- Password

- Last Call
- All Calls
- Call Waiting
- Caller's ID
- Withhold ID
- Call Charge

- Cost Left
- Price/Unit
- Max Cost
- Warning at

### 9 Network

- New Network
- Search Mode
- Network List

# Trouble Shooting

Should any problem persist contact your dealer.

Problem	Cause	Remedy
Telephone will not switch on		Check that the Battery Pack is fully charged and correctly connected to the phone
Extremely short battery life for a new battery pack	The network you are using and the condition of the battery pack can affect battery life	
Short battery life for an old battery pack	The battery pack has worn out	Replace with a new one
The charging indicator does not light and the phone cannot be switched on when charging	When the Battery Pack has been deeply discharged the phone will take a short time until the indicator lights	Leave the phone charging the Battery Pack for a few minutes before the indicator is lit and attempting to switch it on
Short battery life for Ni-MH battery pack	The life of the battery pack is affected by improper charging, this is inherent in all Ni-MH batteries	To maintain maximum performance always use until the Low Battery Warning and then fully recharge the battery pack. To revive the battery pack use the telephone until the Low Battery Warning and then fully recharge three times. However, if the battery life is still short, the battery pack has eventually worn out. Replace with a new one.
Calls cannot be made	The phone is locked	Unlock the phone
	Outgoing calls are barred	Disable the outgoing call barring, or barred dial
	The phone is not registered to a network	Move to a coverage area and operate your phone after it has registered with a network.

## Trouble Shooting

Calls cannot be made from Fixed Dial Store		Check your SIM supports Fixed Dial Check if the Fixed Dial is switched on Check the phone number is stored in the Fixed Dial
Calls cannot be received	The phone is not switched on	Switch the phone on
	Incoming calls are barred	Disable the incoming call barring
	The phone is not registered to a network	Move to a coverage area and operate your phone after it has registered with a network.
Emergency calls cannot be made	You are not in a GSM coverage area	Check that the antenna symbol <b>T</b> is displayed - move to a coverage area and operate your phone when the antenna symbol is displayed
Telephone numbers cannot be recalled from Phonebook	The phone is locked	Unlock the phone
	Phone number has been restricted	Switch off restriction

## Important Error Messages

These are some of the most important error messages which may be displayed:

Area Not Allowed	Roaming in the selected area is not allowed
Network Not Allowed	Roaming with the selected network is not allowed
Security Failure	The network has detected an authentication failure because your SIM is not registered with that network - contact your Service Provider
SIM Blocked / Contact Service provider	The SIM is blocked because one of the PIN/PIN2 unblocking keys (PUK/PUK2) has been entered incorrectly ten times - contact your Service Provider
SIM Error	The phone has detected a problem with the SIM - switch the phone off and then back on; if the message is still displayed contact your Service Provider
SIM Invalid	The SIM has failed one or more of the SIM personalisation checks - contact your Service Provider

Function Unavailable	The selected feature is either not supported by the SIM or is not available with the current subscription - contact your Service Provider
PIN2 Invalidated	The PIN2 is blocked permanently because the wrong PUK2 has been entered ten times, services controlled by PIN2 cannot be used - contact your Service Provider
Message Rejected Store Full	A message has been received but the message store is full - to receive messages, delete some of the currently stored messages or set messages to Auto Delete
Number Too Long (Max:20)	The edited or newly created Phonebook number is too long for the SIM
Warning Store Full Continue?	The message area is full. Your messages cannot be stored until some of the currently stored messages are deleted
Verification Failure	On changing the phone lock code, verification of the new code is incorrect - retry changing the lock code with correct verification
Incorrect Lock Code	Disabling or enabling the lock code has failed due to incorrect entry of the lock code - re-enter lock code
Invalid PIN / PIN2 / PUK / PUK2	The entered code is incorrect - re-enter code correctly
Auto Redial List Full	Redial list of unsuccessfully dialled numbers is full - switch the phone off and then on again

# Important Information

## Safety Considerations

The following information should be read and understood as it provides details which will enable you to operate your phone in a manner which is both safe to you and your environment, and conforms to any legal requirements regarding the use of cellular phones.



This equipment should only be charged with approved charging equipment, e.g. AC Adaptor (EB-CAD52xx\*) - supplied in the Main Kit.

Other usage will invalidate any approval given to this apparatus and may be dangerous. The use of approved charging equipment is recommended to ensure optimum performance and avoid damage to your phone. Ensure the voltage rating of the AC Adaptor is compatible with the country of use when travelling abroad.

Other recommended equipment for charging includes DC Adaptor (EB-CDD92), and Handsfree Car Kit (EB-HFD52Z).

*\* Where xx identifies the specific AC Adaptor region, e.g. CN, EU, HK, TW, UK.*



Switch off your cellular phone when in an aircraft. The use of cellular phones in an aircraft may be dangerous to the operation of the aircraft, disrupt the cellular network and may be illegal. Failure to observe this instruction may lead to the suspension or denial of cellular phone services to the offender, or legal action or both.



You are advised not to use the equipment at a refuelling point. You are reminded to observe restrictions on the use of radio equipment in fuel depots, chemical plants or where blasting operations are in progress. Never expose the battery pack to extreme temperatures (in excess of 60°C) or charge the battery pack for much longer than recommended.



You **MUST** exercise proper control of your vehicle at all times. Do not hold a phone while you are driving; find a safe place to stop first. Do not speak into a handsfree microphone if it will take your mind off the road. Always acquaint yourself thoroughly with restrictions concerning the use of cellular phones within the country you are driving and observe them at all times.



Care must be taken when using the phone in close proximity to personal medical devices, such as pacemakers and hearing aids.

## Important Information



For most efficient use hold the phone as you would any normal telephone. Keep the antenna pointed over your shoulder while in use. Use only the supplied or approved replacement antenna. Unauthorized antennas, modifications or attachments may damage the phone and violate applicable regulations. The use of an unapproved antenna, modification or attachment may result in the invalidation of your guarantee – this does not affect your statutory rights.

This Panasonic mobile phone is designed, manufactured and tested to ensure that it complies with the following specifications covering RF exposure guidelines;

CENELEC European Pre-standard ENV50166-2

ANSI C95.1-1992 (USA, Asia-Pacific)

AS 2772.1 (Int)-1998 (Australia)

# Care and Maintenance



Pressing any of the keys may produce a loud tone. Avoid holding the phone close to the ear while pressing the keys.



Extreme temperatures may have a temporary effect on the operation of your phone. This is normal and does not indicate a fault.



Do not modify or disassemble the equipment. There are no user serviceable parts.



Do not subject the equipment to excessive vibration or shock.



Avoid contact with liquids. If the equipment becomes wet immediately remove the power and contact your dealer.



Do not leave the equipment in direct sunlight or a humid, dusty or hot area.



Keep metallic items that may accidentally touch the terminals away from the equipment.



Always charge the Battery Pack in a well ventilated area, not in direct sunlight, between +5°C and +35°C. It is not possible to recharge the battery pack if it is outside this temperature range.



Avoid recharging battery packs for longer than recommended.



Do not incinerate or dispose of the battery packs as ordinary rubbish. The battery packs must be disposed of in accordance with local legislation and may be recycled.



When disposing of any packing materials or old equipment check with your local authorities for information on recycling.



# Glossary of Terms

DTMF Tones	Dual Tone Multi-Frequency tones allow you to communicate with computerized phone systems, voice mailboxes etc.
GSM	Global System for Mobile Communications. The name given to the advanced digital technology that your phone uses.
Home Country	The country where your home network operates.
Home Network	The GSM network on which your subscription details are held.
Network Operator	The organization responsible for operating a GSM network.
Password	Used for the control of the Call Bar. Supplied by your Service Provider.
PIN	Personal Identification Number used for SIM security. Supplied by your Service Provider. If the PIN is entered incorrectly 3 times, the PIN will be blocked.
PIN2	Personal Identification Number used for the control of Fixed Dial Store and Call Charge metering. Supplied by your Service Provider. If the PIN2 is entered incorrectly 3 times, the PIN2 will be blocked.
PUK/PUK2	PIN/PIN2 Unblocking Key. Used to unblock the PIN/PIN2. Supplied by your Service Provider. If the PUK/PUK2 is entered incorrectly 10 times, the PUK/PUK2 will be blocked.
Registration	The act of locking on to a GSM network. This is usually performed automatically by your phone.
Roaming	The ability to use your phone on networks other than your Home network.
Service Provider	The organization responsible for providing access to the GSM network.
SIM	Subscriber Identity Module. A small smart-card which stores unique subscriber and user-entered information such as Phonebook and Short Messages. Supplied by your Service Provider.

# Specifications

### **Telephone**

Type	GSM900 Class 4 GSM1800 Class 1
Temperature range	
Charging	+5°C to +35°C
Storage	-20°C to +60°C

### **Battery – Attached to phone**

	Battery Pack (S)
Weight	99g
Dimensions	
Height x Width x Depth	118.0 x 40.6 x 21.7mm
Supply Voltage	3.6V DC, 600mAh Ni-MH
Standby Time - Idle Mode (h)	Up to 150
Talk Time (h)	3
Charge Time (min)	150

**Note:** Charge time will be longer when the phone is turned on. Battery life is affected by the network you are using and the condition of the battery pack.

The Serial Number can be found on the outside of the phone under the battery. For your convenience we recommend that you note the following details as a record of your purchase.

Part Number	
Serial Number	
Dealer Name	
Purchase Date	



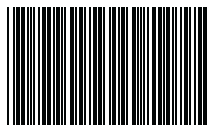
BULL CP8 PATENT

© Matsushita Communication Industrial UK Limited 2000

Information in this document is subject to change without notice. No part of these instructions may be reproduced or transmitted in any form or by any means without obtaining express permission from Matsushita Communication Industrial UK Limited



Printed in UK  
[www.mcuk.panasonic.co.uk](http://www.mcuk.panasonic.co.uk)



00.248

## Free Manuals Download Website

<http://myh66.com>

<http://usermanuals.us>

<http://www.somanuals.com>

<http://www.4manuals.cc>

<http://www.manual-lib.com>

<http://www.404manual.com>

<http://www.luxmanual.com>

<http://aubethermostatmanual.com>

Golf course search by state

<http://golfingnear.com>

Email search by domain

<http://emailbydomain.com>

Auto manuals search

<http://auto.somanuals.com>

TV manuals search

<http://tv.somanuals.com>