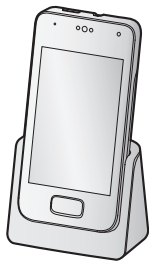


Panasonic®

Installation Manual

Additional Digital Cordless Handset

Model No. **KX-PRXA10**



Thank you for purchasing a Panasonic product.

This unit is an additional handset compatible with the following series of Panasonic Digital Cordless Phone:

- KX-PRX120 (KX-PRXA10)

(The corresponding models are subject to change without notice.)

You must register this handset with your base unit before it can be used. This document describes only the steps needed to register and begin using the handset. Please read the base unit's documentation for further details.

Please read this document before using the unit and save it for future reference. For assistance, visit our Web site: <http://www.panasonic.com/help> for customers in the U.S.A. or Puerto Rico.



PNQX6195ZA

Supplied accessories

Accessory item/Order number	Quantity
Charger/PNLC1049ZW	1
AC adaptor/PNLV226-KZ	1
Rechargeable battery/KX-PRA10EX	1
Handset cover*1/M81101016740	1

*1 The handset cover comes attached to the handset.

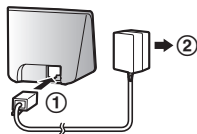
Note:

- Please read the base unit's documentation for additional/replacement accessories.

Preparing the charger

■ KX-PRXA10

- ① Insert the AC adaptor plug to the unit until you hear a click.
- ② Connect the AC adaptor to the power outlet.



Note:

- Use only the supplied Panasonic AC adaptor PNLV226K.
- The AC adaptor must remain connected at all times. (It is normal for the adaptor to feel warm during use.)

Preparing the handset

Inserting microSD card and the battery

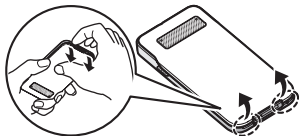
A microSD card (not supplied) allows you to expand the handset's storage capabilities.

Important:

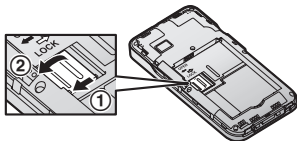
- Use only the supplied battery. For replacement, use only the Panasonic rechargeable battery noted on page 2.

- When removing the battery, make sure you turn off the handset first.
- To avoid loss of data or malfunction, do not damage, carelessly handle, or short-circuit the gold-colored contacts of the microSD card.

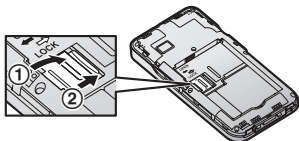
1 Remove the handset's cover.



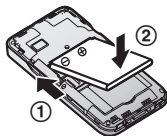
2 Open the microSD card cover by sliding it toward the nearest side of the handset (1) and then lifting up (2).



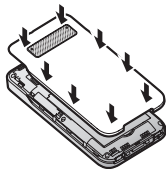
3 Insert the microSD card with the gold-colored contacts facing down, close the microSD cover (1), and then gently slide the cover toward the opposite side of the handset (2).



4 Insert the battery (1) and lower it into the handset (2).



5 Attach the cover.



Note:

- If the battery is fully charged, but the operating time seems to be shorter, clean the charge contacts of the handset and charger with a dry cloth and charge again.

Charging the handset

Charge the handset for about 5 hours before initial use. The charge indicator (①) lights while the handset is charging and turns off when the handset is fully charged.

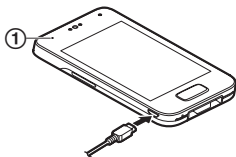
Important:

- If the handset is placed into the charger while talking on the phone, the call is not disconnected.



Place the handset into the charger.

or



Connect a USB cable (not supplied) directly to the handset.

Turning on the handset

To turn the handset on, press and hold the power button on the top of the handset.

Setup wizard

The first time you turn on the handset, the setup wizard prompts you to configure initial settings such as the display language. Follow the on-screen instructions to configure the handset.

Registration dialog

While using the setup wizard, a dialog may be displayed prompting you to press the **[•••]** on the base unit for 5 seconds. Follow the on-screen instructions to register the handset to the base unit. When registration is complete, continue to follow the setup wizard.

Registering the handset to the base unit

If the handset is not registered, the registration dialog (page 4) is displayed. Follow the on-screen instructions to register the handset to the base unit.

If you cancel this dialog, you can display it again by tapping **[Landline]** in the home screen or app list, and then tapping **[Landline settings]** → **[Initial settings]**.

For your safety

To prevent severe injury and loss of life/property, read this section carefully before using the product to ensure proper and safe operation of your product.

WARNING

Power connection

- Completely insert the AC adaptor/power plug into the power outlet. Failure to do so may cause electric shock and/or excessive heat resulting in a fire.
- Regularly remove any dust, etc. from the AC adaptor/power plug by pulling it from the power outlet, then wiping with a dry cloth. Accumulated dust may cause an insulation defect from moisture, etc. resulting in a fire.
- Unplug the product from power outlets if it emits smoke, an abnormal smell, or makes an unusual noise. These conditions can cause fire or electric shock. Confirm that smoke has stopped emitting and contact us at www.panasonic.com/contactinfo

Installation

- This product is not water-resistant. To prevent the risk of fire or electrical shock, do not expose the product to rain or any type of moisture.
- Do not place or use this product near automatically controlled devices such as automatic doors and fire alarms. Radio waves emitted from this product may cause such devices to malfunction resulting in an accident.
- Keep all accessories, including the microSD card, out of the reach of children to prevent swallowing.

Operating safeguards

- To prevent possible hearing damage, do not listen at high volume levels for long periods.



CAUTION

Installation and location

- The AC adaptor is used as the main disconnect device. Ensure that the AC outlet is installed near the product and is easily accessible.

Installation

Battery

- Use only the specified battery or additional/replacement battery noted on page 2 for replacement battery information.
- Do not open or mutilate the battery. Released electrolyte from the battery is corrosive and may cause burns or injury to the eyes or skin. The electrolyte is toxic and may be harmful if swallowed.
- Exercise care when handling the battery. Do not allow conductive materials such as rings, bracelets, or keys to touch the battery, otherwise a short circuit may cause the battery and/or the conductive material to overheat and cause burns.
- Charge the battery in accordance with the instructions and limitations specified in this manual.
- Only use a compatible charger to charge the battery. Do not tamper with the charger. Failure to follow these instructions may cause the battery to swell or explode.
- Do not subject the battery to mechanical shock.
- Keep the battery out of the reach of children.
- Keep the battery clean and dry.
- Wipe the battery terminals with a clean dry cloth if they become dirty.
- Do not continuously charge the battery for a prolonged period of time.
- Remove the battery from the product if the product will not be used for a prolonged period of time.

Attention:



The lithium ion/polymer battery you have purchased is recyclable. Please call 1-800-8-BATTERY (1-800-822-8837) for information on how to recycle this battery.

Important safety instructions

When using your product, basic safety precautions should always be followed to reduce the risk of fire, electric shock, and injury to persons, including the following:

1. Do not use this product near water for example, near a bathtub, washbowl, kitchen sink, or laundry tub, in a wet basement or near a swimming pool.
2. Do not use the telephone to report a gas leak in the vicinity of the leak.
3. Use only the power cord and batteries indicated in this manual. Do not dispose of batteries in a fire. They may explode. Check with local codes for possible special disposal instructions.

SAVE THESE INSTRUCTIONS

Other information

- Operating the product near electrical appliances may cause interference. Move away from the electrical appliances.

CAUTION: Risk of explosion if battery is replaced by an incorrect type. Dispose of used batteries according to the instructions.

Routine care

- **Wipe the outer surface of the product with a soft moist cloth.**
 - Do not use benzine, thinner, or any abrasive powder.
-

Notice for downloading software or upgrading the operating system

- Product functions and operating procedures may change and certain applications may not function any longer if the product's operating system is upgraded.
 - Confirm the safety and security of software before downloading or installing it on this product. Installing malware or viruses can cause malfunction and the disclosure of any private information stored in this product, or may cause excessive sound volume.
-

Notice for product disposal, transfer, or return

- This product can store your private/confidential information. To protect your privacy/confidentiality, we recommend that you erase information such as phonebook or caller list entries from the memory before you dispose of, transfer, or return the product.
-

Trademarks

- The Android robot is reproduced or modified from work created and shared by Google and used according to terms described in the Creative Commons 3.0 Attribution License.
 - microSDHC Logo is a trademark of SD-3C, LLC.
 - All other trademarks identified herein are the property of their respective owners.
-

FCC and other information

This equipment is hearing aid compatible as defined by the FCC in 47 CFR Section 68.316.

When you hold the phone to your ear, noise might be heard in your Hearing Aid. Some Hearing Aids are not adequately shielded from external RF (radio frequency) energy. If noise occurs, use an optional headset accessory or the speakerphone

Installation

option (if applicable) when using this phone. Consult with your audiologist or Hearing Aid manufacturer about the availability of Hearing Aids which provide adequate shielding to RF energy commonly emitted by digital devices.

WHEN PROGRAMMING EMERGENCY NUMBERS AND(OR) MAKING TEST CALLS TO EMERGENCY NUMBERS:

- 1) Remain on the line and briefly explain to the dispatcher the reason for the call.
- 2) Perform such activities in the off-peak hours, such as early morning or late evenings.

This device complies with Part 15 of the FCC Rules. Operation is subject to the following two conditions:

(1) This device may not cause harmful interference, and (2) this device must accept any interference received, including interference that may cause undesired operation.

Privacy of communications may not be ensured when using this phone.

CAUTION:

Any changes or modifications not expressly approved by the party responsible for compliance could void the user's authority to operate this device.

NOTE:

This equipment has been tested and found to comply with the limits for a Class B digital device, pursuant to Part 15 of the FCC Rules. These limits are designed to provide reasonable protection against harmful interference in a residential installation. This equipment generates, uses, and can radiate radio frequency energy and, if not installed and used in accordance with the instructions, may cause harmful interference to radio communications. However, there is no guarantee that interference will not occur in a particular installation. If this equipment does cause harmful interference to radio or television reception, which can be determined by turning the equipment off and on, the user is encouraged to try to correct the interference by one or more of the following measures:

- Reorient or relocate the receiving antenna.
- Increase the separation between the equipment and receiver.
- Connect the equipment into an outlet on a circuit different from that to which the receiver is connected.
- Consult the dealer or an experienced radio/TV technician for help.

FCC RF Exposure Warning:

- This product complies with FCC radiation exposure limits set forth for an uncontrolled environment.
- This handset may not be collocated or operated in conjunction with any other antenna or transmitter.
- For body-worn operation, the handset must be used only with a non-metallic accessory. Use of other accessories may not ensure compliance with FCC RF exposure requirements.

Notice:

- FCC ID can be found inside the battery compartment or on the bottom of the unit.

Notice:

- This product is designed for use in the United States of America. Sale or use of this product in other countries may violate local laws.
- Cet appareil est conçu pour être utilisé aux États-Unis d'Amérique. La vente ou l'emploi de cet appareil dans certains autres pays peut constituer une infraction à la législation locale.
- Este producto está diseñado para usarse en los Estados Unidos de América. La venta o el empleo de este producto en ciertos países puede constituir violación de la legislación local.
- 本產品專為美國使用而設。若在其他國家銷售或使用，可能會違反當地法例。
- この製品は、日本国外での使用を目的として設計されており、日本国内での使用は法律違反となります。従って、当社では日本国内においては原則として修理などのサービスは致しかねます。

End-user license

This is an agreement between you and Panasonic System Networks Co., Ltd. ("Panasonic") with respect to the software installed in this product. Carefully read the terms of this agreement prior to using this product and using indicates your acceptance of these terms.

Copyright:

The software is protected by copyright laws and international treaty provisions, and all other applicable laws. You are receiving only a limited license to use the software and related documentation, and that you shall obtain no title, ownership nor any other rights in or to the software and its related documentation, all of which title and rights shall remain with Panasonic or its licensor.

License:

You may: ① use the software solely for the purpose of recording images from this product compatible with the software, ② transfer your rights under this agreement on a permanent basis, provided that you transfer this agreement, all copies of the software, all related documentation and this product, and the recipient agrees to the terms of this agreement.

Restrictions:

You may not: ① reverse engineer, decompile or disassemble the software, except as expressly permitted by applicable law, ② use, copy, modify, alter, rent, lease or transfer the software, its related documentation, or any copies thereof, in whole or

Installation

in part, except as expressly provided in this agreement, ③ export the software in contravention of any applicable U.S. or foreign export laws and regulations.

Open source software notice

Parts of this product use open source software supplied based on the relevant conditions of the Free Software Foundation's GPL and/or LGPL and other conditions. Please read all license information and copyright notices related to the open source software used by this product. This information is available at the following web page:

www.panasonic.net/pcc/support/tel/sdect

At least three (3) years from delivery of this product, Panasonic System Networks Co., Ltd. will give to any third party who contacts us at the contact information provided below, for a charge of no more than the cost of physically distributing source code, a complete machine-readable copy of the corresponding source code and the copyright notices covered under the GPL and the LGPL. Please note that software licensed under the GPL and the LGPL is not under warranty.

www.panasonic.net/pcc/support/tel/sdect

Disclaimer

Panasonic shall not be liable for loss of data or other incidental or consequential damages resulting from the use of this product. The use of downloaded content may be restricted or prohibited by the rights of third parties, including but not limited to restriction under applicable copyright laws. You are entirely responsible for additional content that you download to or forward from this product; Panasonic is not responsible for such content or its use. Panasonic does not warrant or guarantee the accuracy, integrity or quality of any additional content or any other third-party content. Under no circumstances will Panasonic be liable in any way for the improper use of additional content or other third-party content by this product or its operator. This document and any related documentation may refer to services and applications that are provided by third parties. The use of such services or programs may require separate registration with the third-party provider and may be subject to additional terms of use. For applications accessed on or through a third-party web site, please review the web site's terms of use and applicable privacy policy in advance.

Customer services

Customer Services Directory (United States and Puerto Rico)

Obtain Product Information and Operating Assistance; locate your nearest Dealer or Service Center; purchase Parts and Accessories; or make Customer Service and Literature requests by visiting our Web Site at:

<http://www.panasonic.com/help>

or, contact us via the web at:

<http://www.panasonic.com/contactinfo>

For hearing or speech impaired TTY users, TTY: 1-877-833-8855

Accessory Purchases (United States and Puerto Rico)

Purchase Parts, Accessories and Owner's Manual online for all Panasonic Products by visiting our Web Site at:

<http://www.pstc.panasonic.com>

or, send your request by E-mail to:

npcparts@us.panasonic.com

You may also contact us directly at: 1-800-237-9080 (Fax Only)
(Monday - Friday 9 am to 9 pm, EST.)

Panasonic National Parts Center
20421 84th Avenue S., Kent, WA 98032

(We accept Visa, MasterCard, Discover Card, American Express.)

For hearing or speech impaired TTY users, TTY: 1-866-605-1277

Warranty (For United States and Puerto Rico)

Panasonic Telephone Products Limited Warranty

Limited Warranty Coverage

If your product does not work properly because of a defect in materials or workmanship, Panasonic Corporation of North America (referred to as "the warrantor") will, for the length of the period indicated on the chart below, which starts with the date of original purchase ("Limited Warranty period"), at its option either (a) repair your product with new or refurbished parts, or (b) replace it with a new or a refurbished equivalent value product, or (c) refund your purchase price. The decision to repair, replace or refund will be made by the warrantor.

Parts	Labor
One (1) Year	One (1) Year

During the "Labor" Limited Warranty period there will be no charge for labor. During the "Parts" Limited Warranty period, there will be no charge for parts. You must mail-in your product prepaid during the Limited Warranty period. This Limited Warranty excludes both parts and labor for batteries, antennas, and cosmetic parts (cabinet). This Limited Warranty only applies to products purchased and serviced in the United States or Puerto Rico. This Limited Warranty is extended only to the original purchaser and only covers products purchased as new.

Mail-In Service--Online

Online Repair Request

To submit a new repair request and for quick repair status visit our Web Site at <http://www.panasonic.com/repair>

When shipping the unit carefully pack in a padded shipping carton, include all accessories, and send it prepaid. Include a letter detailing the complaint, a return address and provide a day time phone number where you can be reached. P.O. Boxes are not acceptable. Keep the tracking number for your records. A copy of valid registered receipt is required under the 1 year parts and labor Limited Warranty.

For Limited Warranty service for headsets if a headset is included with this product please follow instructions above.

IF REPAIR IS NEEDED DURING THE LIMITED WARRANTY PERIOD THE PURCHASER WILL BE REQUIRED TO FURNISH A SALES RECEIPT/PROOF OF PURCHASE INDICATING DATE OF PURCHASE, AMOUNT PAID AND PLACE OF PURCHASE. CUSTOMER WILL BE CHARGED FOR THE REPAIR OF ANY UNIT RECEIVED WITHOUT SUCH PROOF OF PURCHASE.

Limited Warranty Limits And Exclusions

This Limited Warranty ONLY COVERS failures due to defects in materials or workmanship, and DOES NOT COVER normal wear and tear or cosmetic damage. The Limited Warranty ALSO DOES NOT COVER damages which occurred in shipment, or failures which are caused by products not supplied by the warrantor, or failures which result from accidents, misuse, abuse, neglect, bug infestation, mishandling, misapplication, alteration, faulty installation, set-up adjustments, misadjustment of consumer controls, improper maintenance, power line surge, lightning damage, modification, introduction of sand, humidity or liquids, commercial use such as hotel, office, restaurant, or other business or rental use of the product, or service by anyone other than a Factory Service Center or other Authorized Servicer, or damage that is attributable to acts of God.

THERE ARE NO EXPRESS WARRANTIES EXCEPT AS LISTED UNDER "LIMITED WARRANTY COVERAGE". THE WARRANTOR IS NOT LIABLE FOR INCIDENTAL OR CONSEQUENTIAL DAMAGES RESULTING FROM THE USE OF THIS PRODUCT, OR ARISING OUT OF ANY BREACH OF THIS LIMITED WARRANTY. (As examples, this excludes damages for lost time, lost calls or messages, cost of having someone remove or re-install an installed unit if applicable, travel to and from the servicer. The items listed are not exclusive, but are for illustration only.) **ALL EXPRESS AND IMPLIED WARRANTIES, INCLUDING THE WARRANTY OF MERCHANTABILITY, ARE LIMITED TO THE PERIOD OF THE LIMITED WARRANTY.**

Some states do not allow the exclusion or limitation of incidental or consequential damages, or limitations on how long an implied warranty lasts, so the exclusions may not apply to you. This Limited Warranty gives you specific legal rights and you may also have other rights which vary from state to state. If a problem with this product develops during or after the Limited Warranty period, you may contact your dealer or Service Center. If the problem is not handled to your satisfaction, then write to the warrantor's Consumer Affairs Department at the addresses listed for the warrantor.

PARTS AND SERVICE, WHICH ARE NOT COVERED BY THIS LIMITED WARRANTY, ARE YOUR RESPONSIBILITY.

When you ship the product

- Carefully pack your unit, preferably in the original carton.
- Attach a letter, detailing the symptom.
- Send the unit to Panasonic Exchange Center, prepaid and adequately insured.
- Do not send your unit to Panasonic Corporation of North America listed on the back cover or to executive or regional sales offices. These locations do not repair consumer products.

IMPORTANT!

If your product is not working properly. . .

- ① **Reconnect AC adaptor to the base unit.**
- ② **Check if telephone line cord is connected.**
- ③ **Reinsert the battery and restart the handset.**
- ④ Read **troubleshooting** page in the base unit's **Operating Instructions.**



Visit our Web site: <http://www.panasonic.com/help>

- FAQ and troubleshooting hints are available.

Panasonic Corporation of North America
Two Riverfront Plaza, Newark, NJ 07102-5490

© Panasonic System Networks Co., Ltd. 2013

Free Manuals Download Website

<http://myh66.com>

<http://usermanuals.us>

<http://www.somanuals.com>

<http://www.4manuals.cc>

<http://www.manual-lib.com>

<http://www.404manual.com>

<http://www.luxmanual.com>

<http://aubethermostatmanual.com>

Golf course search by state

<http://golfingnear.com>

Email search by domain

<http://emailbydomain.com>

Auto manuals search

<http://auto.somanuals.com>

TV manuals search

<http://tv.somanuals.com>