

# KeyMaster

*- your codefree solution*

## **Installation manual**

**98RV1**

**Panasonic DVD-RV60**

---

© 2000 HW-Parts & StoneDesign

## **1.1 - Players.**

These installation instructions covers the installation of the *Key-Master* for DVD players manufactured by:

**Kenwood DVD3030**

**Panasonic RV-20**

**Panasonic RV-40**

**Panasonic RV-60**

**Panasonic SA-PM08**

**Yamaha DVD-S796**

**Yamaha DVD-S796**

**[www.stonedesign.dk/dvd/](http://www.stonedesign.dk/dvd/)**

I98RV1UK-V2

---

All names, logos etc. are trademarks of their respective companies. All rights reserved. The information in this document is subject to change without notice.

Download from [Www.Somanuals.com](http://Www.Somanuals.com). All Manuals Search And Download.

## 2.1 - Disclaimer! Read this thoroughly.

Before installing the *KeyMaster* which is able to make your DVD player codefree, you should read through these warnings thoroughly:

- v We are not responsible for any illegal use of the *KeyMaster*.
- v We offer no warranty on your DVD-player.
- v The installation of the *KeyMaster* is at your own risk.
- v By installing the *KeyMaster* you may invalidate the warranty of your DVD-player.
- v If the manufacture of the DVD-player makes changes we can't the guaranty the functionality of the *KeyMaster*.
- v The *KeyMaster* is to be installed inside your DVD-player and it is therefore necessary to be familiar with soldering, otherwise you should get a service center to do the installation for you.
- v Remember to disconnect the DVD-player from the mains, before opening the DVD-player.

### 3.1 - Removal of the top cover.

It is necessary to remove the frontcover of the tray. First, open the tray by pressing "OPEN" on the player or the remote control. Then, pull the bottom of the frontcover of the tray forward and simultanely carefully pull it upwards. Shown on **fig. 1**.

**Fig. 1**



**Note:** The picture shows a Panasonic A160.

Remember to disconnect the player from the mains before proceeding. Remove the seven screws which holds the topcover, two in each side and three on the back of the player as shown on **fig. 2**.

**Fig. 2**



**Note:** The picture shows a Panasonic DVD-RV60.

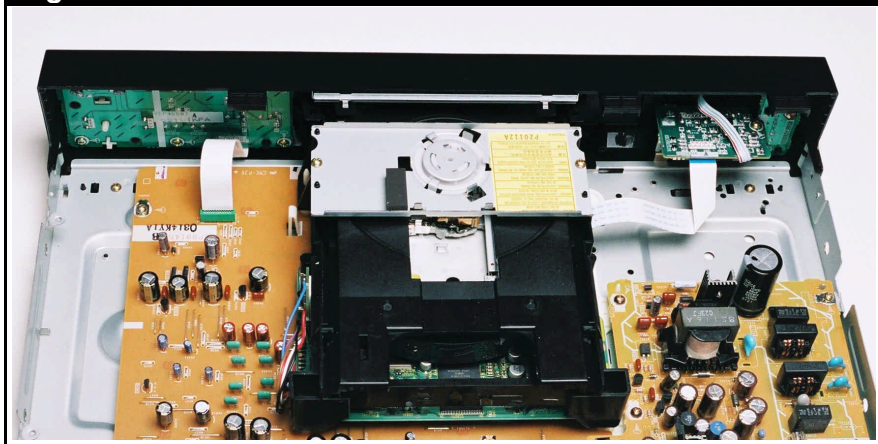
**continued...**

To remove the mechanism, use the following procedure:

- Disconnect the cables connected to the frontpanel of the player.
- Remove the frontpanel by loosening the seven snap-locks. Please be aware that the bottom chassis can have very sharp edges.
- Remove the four screws which holds the mechanism.
- Then remove the mechanism by pulling the backside of the mechanism upwards.

**Note:** The mechanism is sensitive towards static electricity and should be handled carefully.

**Fig. 3**

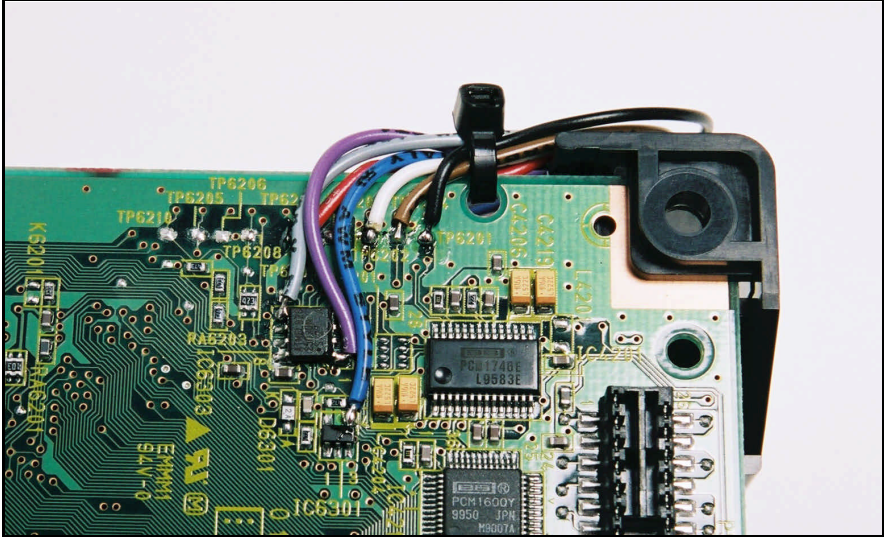


**Note:** The picture shows a Panasonic DVD-RV60.

## 3.2 - Installing the *KeyMaster*.

When the mechanism is removed it is possible to install *the Key-Master*. **fig. 4.**

**Fig. 4**



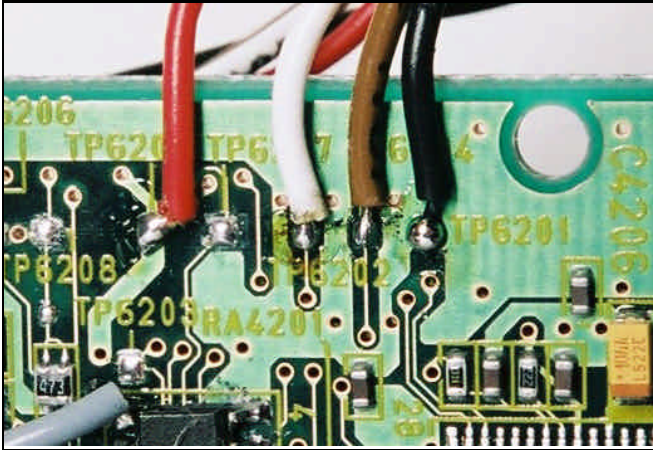
Seven wires have to be soldered onto the MPEG board (which are attached to the mechanism). All seven wires have to be soldered onto the bottomside of the MPEG board. Remember to adjust the ends of the wires so they will fit onto the soldering pads.

Solder the seven wires onto the board as shown on **fig. 4-5-6.**

***Do not change or remove any components.***

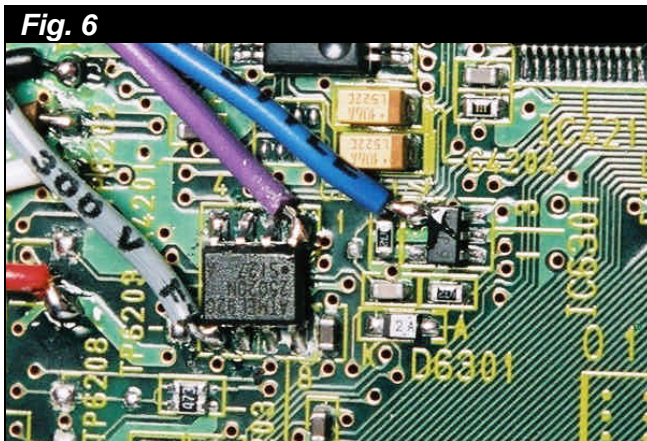
## 3.2 - Continued.

**Fig. 5**



- ▶▶▶ Connect the RED wire to the testpoint TP6209.
- ▶▶▶ Connect the BLACK wire to the testpoint TP6201.
- ▶▶▶ Connect the BROWN wire to the testpoint TP6204 or pin 2, IC6303.
- ▶▶▶ Connect the WHITE wire to the testpoint TP6202 or pin 6, IC6303.

**Fig. 6**

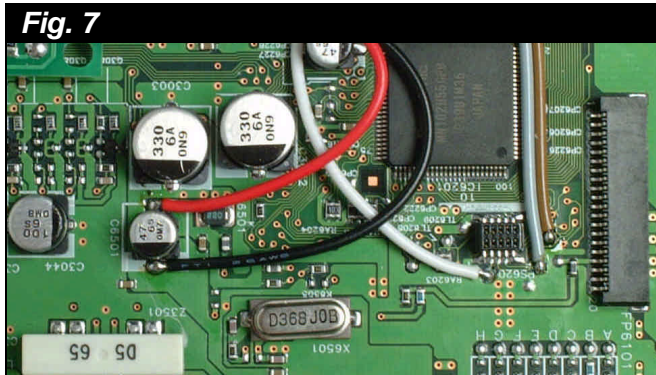


- ▶▶▶ Connect the PURPLE wire on pin 1, IC6303.
- ▶▶▶ Connect the GREY wire on pin 5, IC6303.
- ▶▶▶ Connect the BLUE wire on pin 4, IC6301.

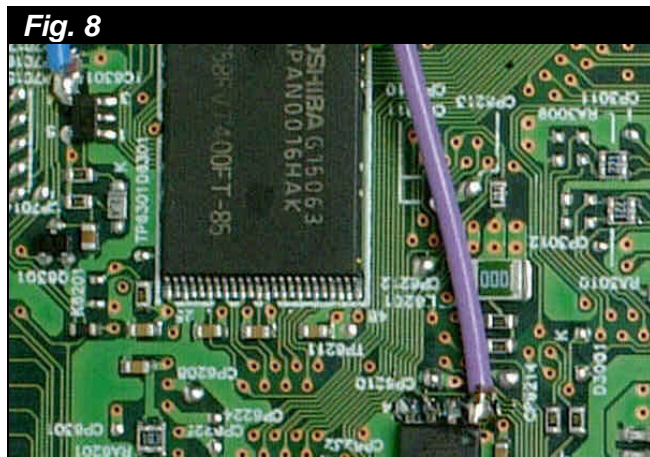


### 3.3 - Installation in the Panasonic SA-PM08.

In the Panasonic SA-PM08 the installation has to done as follows:



- ▶▶▶ Connect the RED wire to C6501 (+).
- ▶▶▶ Connect the BLACK wire to the C6501 (-).
- ▶▶▶ Connect the BROWN wire to the shown testpoint TP6204 or pin 2, IC6303.
- ▶▶▶ Connect the WHITE wire to the shown testpoint TP6202 or pin 6, IC6303.
- ▶▶▶ Connect the GREY wire to the testpoint TP6202 or pin 5, IC6303.

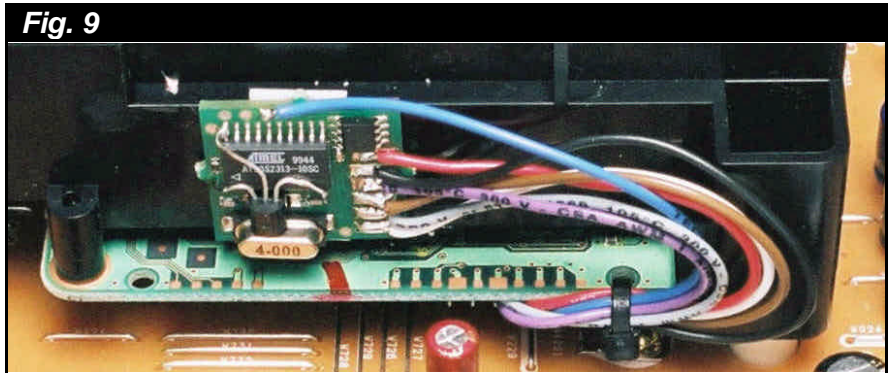


- ▶▶▶ Connect the PURPLE wire on pin 1, IC6303.
- ▶▶▶ Connect the BLUE wire on pin 4, IC6301.



### 3.3 - Securing KeyMaster.

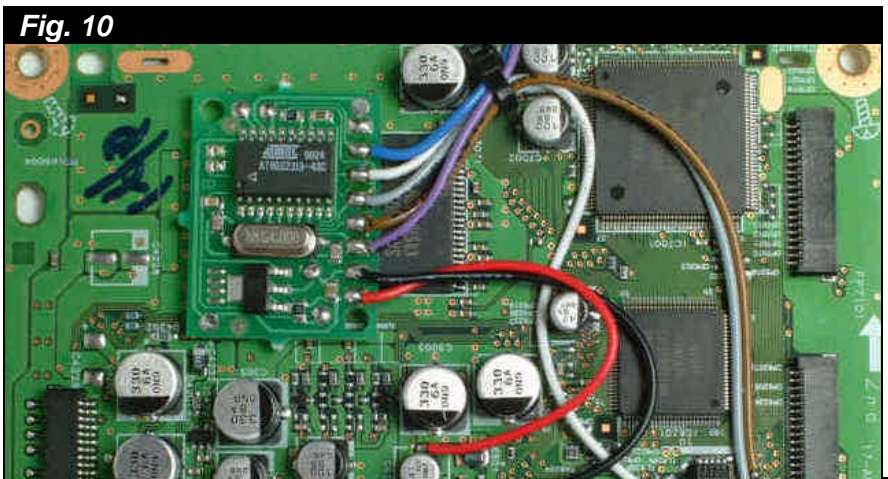
Before fastening the KeyMaster the wires have to be fixed with a cable tie. Use the cable tie as shown on **fig. 9**. Fix the wires so they are not located underneath the chassis of the mechanism.



**Note:** the picture shows a Panasonic DVD-RV60.

Secure the *KeyMaster* onto the mechanism chassis as shown on **fig. 9**. Remove the protection film from the double sided tape and press the *KeyMaster* thoroughly towards the chassis.

In Panasonic SA-PM08 the KeyMasteren has to be secured as shown in **Fig. 10**.



### **3.4 - Assembling the player.**

Assembling the player is done using the following procedure:

- ① Use the four screws to attach the mechanism.
- ② Press the cables from the frontpanel into their sockets.
- ③ Attach the front of the player again. Then ensure all snaplocks.
- ④ Put the topcover back on and secure it.
- ⑤ Refit the frontpanel of the tray.

### **3.5 - Finishing up the installation.**

After turning the player on and off the KeyMaster is ready for use. The player and the *KeyMaster* is now ready for use. For details about programming the *KeyMaster* look in the operating instructions.

*Remember to test the player in both region 1 & 2.*

***Enjoy our product, the KeyMaster!***

## Free Manuals Download Website

<http://myh66.com>

<http://usermanuals.us>

<http://www.somanuals.com>

<http://www.4manuals.cc>

<http://www.manual-lib.com>

<http://www.404manual.com>

<http://www.luxmanual.com>

<http://aubethermostatmanual.com>

Golf course search by state

<http://golfingnear.com>

Email search by domain

<http://emailbydomain.com>

Auto manuals search

<http://auto.somanuals.com>

TV manuals search

<http://tv.somanuals.com>