

# Panasonic

## Personal Hair Trimmer Operating Instructions

Model No. ER327

### IN USA CONTACT:

**Panasonic Consumer Electronics Company**  
One Panasonic Way 2F-3 Secaucus, NJ 07094

### IN PUERTO RICO CONTACT:

**Panasonic Sales Company**  
**Division of Matsushita Electric of Puerto Rico, Inc.**  
San Gabriel Industrial Park 65th Infantry Avenue KM9.5  
Carolina, Puerto Rico 00630

### En México:

**Panasonic de México, S.A de C.V.**

### México D.F.

Arnores 1120, Col. del Valle, 03100

Tel: 54 88 10 00

**Service • Assistance • Accessories**

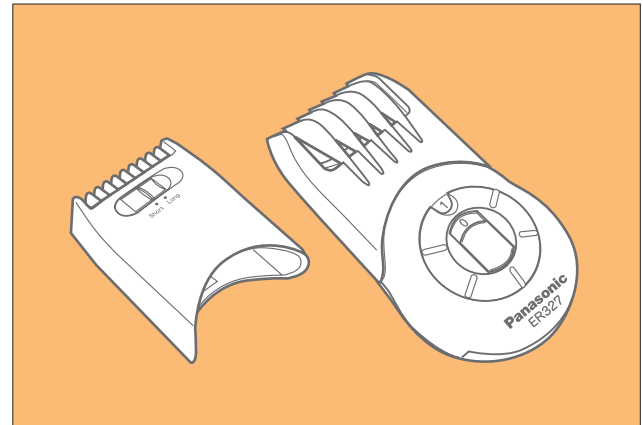
**Dépannage • Assistance • Accessoires**

Call 1-800-338-0552 (In USA)

[www.panasonic.com](http://www.panasonic.com) (In USA)

Call 1-800-467-3405 (In Canada, only for shavers)

Composer 1-800-467-3405 (Au Canada, pour les rasoir seulement)



No. 1 EN, ES (U.S.A.)

Printed in Japan  
Imprimé au Japon

Before operating this unit, please read these instructions carefully.

# Caution

---

## Index

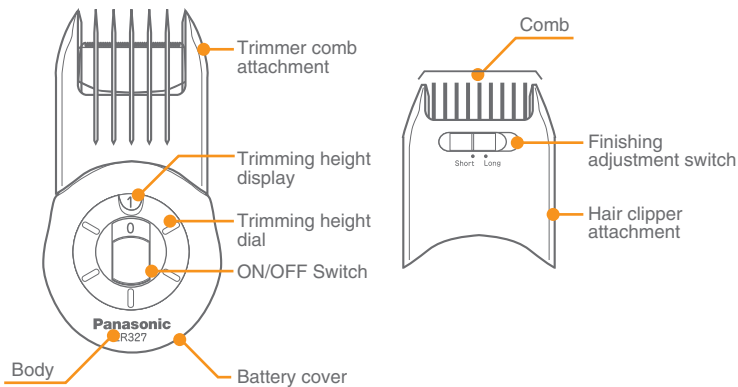
ENGLISH  
ESPAÑOL

Page 2  
Página 22

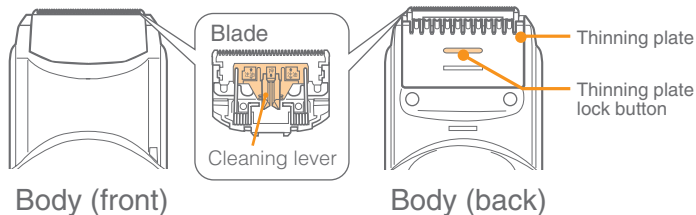
- Do not place the trimmer in locations that are subject to high humidity.
- Clean the body only with a soft cloth slightly dampened with water or soapy water. Never use a corrosive cleaner such as benzine or bleach.
- Never immerse the trimmer in water or apply to wet hair.
- Keep out of reach of children.
- Do not use on animals.
- The trimmer may become warm during operation. This is normal.
- Never tamper with the moving parts.
- Do not disassemble the trimmer. Take it to a qualified serviceman when service or repair is required. Store the trimmer in a dry area, where it will be protected from damage.
- Do not use new batteries and old batteries together.
- Remove batteries from the trimmer if it is not to be used for a long period of time.

# Parts identification

## Parts Name



Body without the Trimmer comb attachment or hair clipper attachment



## Accessories

Cleaning brush

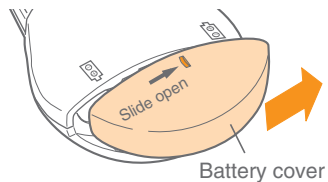


Oil



# Inserting the batteries

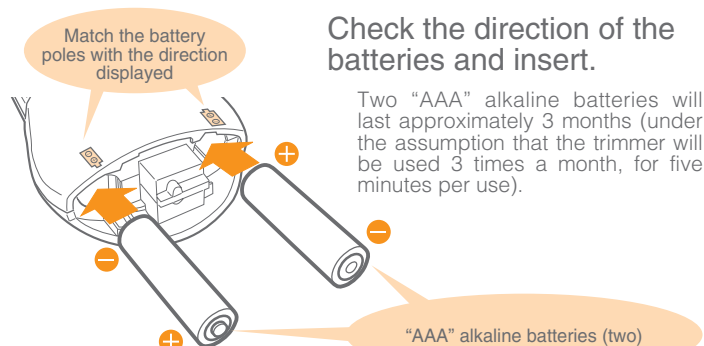
## 1 Back



Remove the battery cover.

- Turn the trimmer over onto its back (the side without the switch) and slide the battery cover in the direction of the arrow.

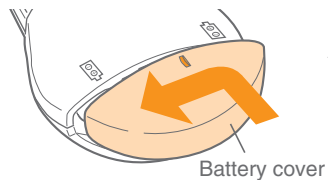
## 2



Check the direction of the batteries and insert.

Two “AAA” alkaline batteries will last approximately 3 months (under the assumption that the trimmer will be used 3 times a month, for five minutes per use).

## 3



Attach the battery cover.

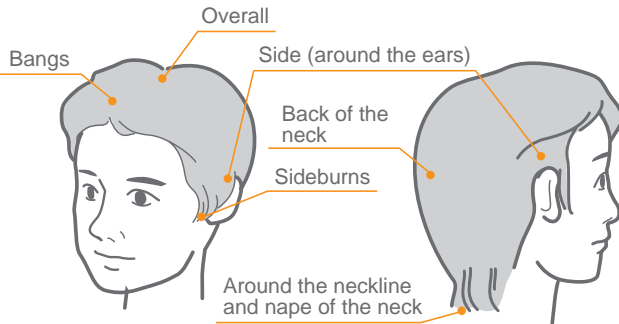
- Hold down the cover and slide it to the left in the direction of the arrow.

## Preparations before cutting

- 1 Drape a towel or cape over the shoulders.
- 2 Comb the hair thoroughly to remove any tangles or knots.



## Hair areas which can be trimmed

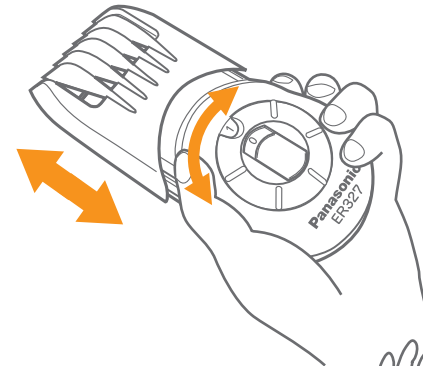
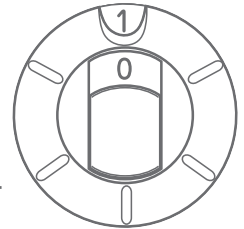


### CAUTION

- The use of a styling agent (such as gel or mousse) will prevent a clean cut, so only use the trimmer on untreated hair.
- Use on curly, long or short spiky hair may lead to unsatisfactory results.

## Adjusting the length of the Trimmer Comb attachment

- 1 Turn the switch to [0].  
\* The trimmer comb attachment will not slide if the switch is [1].
- 2 Turn the 5 position dial until it clicks, then adjust the trimmer comb attachment to the desired length.



After adjusting the length, turn the switch to [1] and confirm the trimmer comb is locked in position.

(Failure to observe this may cause the attachment to shift, causing a larger portion of hair to be cut.)

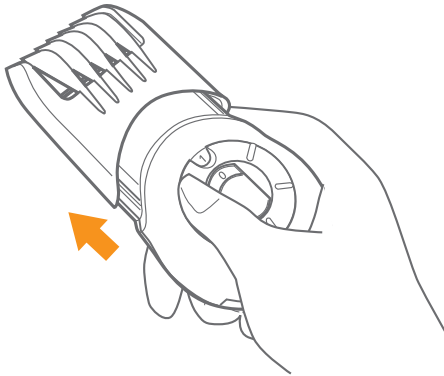
How to confirm this  
Check by pressing the attachment lightly against the palm of your hand.



## Attaching and removing the Trimmer Comb attachment

### Removing

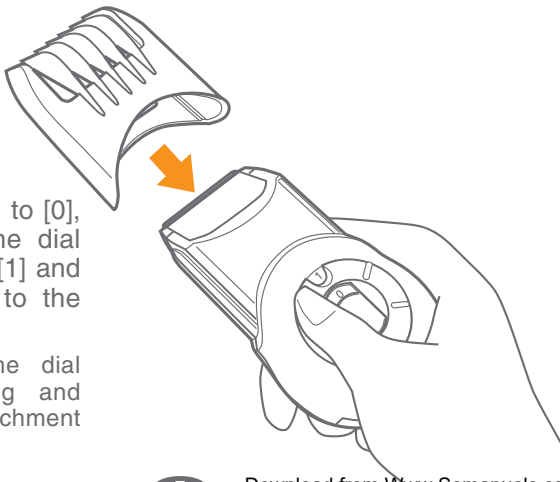
Turn the switch to [0], confirm that the dial guide is set to [1] and then gently pull off to remove.



### Attaching

Turn the switch to [0], confirm that the dial guide is set to [1] and then attach it to the body.

\* Hold down the dial while attaching and push the attachment until it clicks.

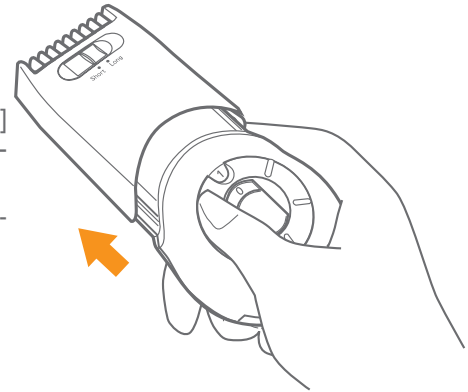


## Attaching and removing the Hair Clipper attachment

### Removing

Turn the switch to [0] and slide the attachment to remove.

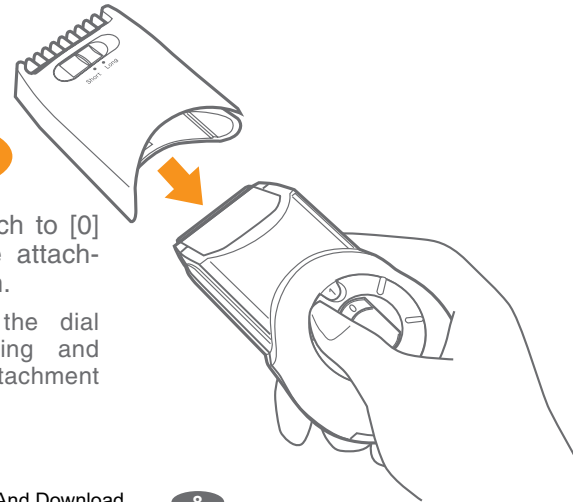
\* Hold down the dial during removal.



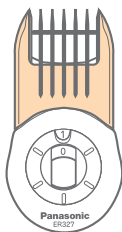
### Attaching

Turn the switch to [0] and slide the attachment to attach.

\* Hold down the dial while attaching and push the attachment until it clicks.

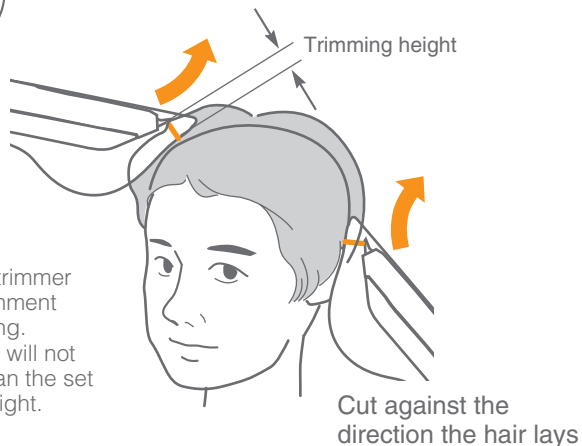


## Cutting by adjusting the length of the Trimmer Comb attachment



Having secured the trimmer comb attachment onto the body

Make sure the switch is facing downwards before attempting to cut.



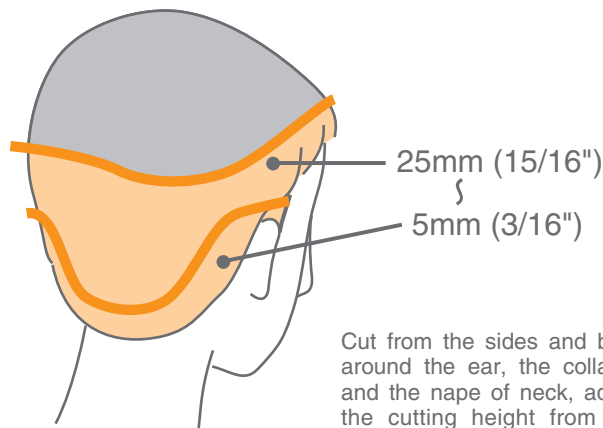
- Secure the trimmer comb attachment before cutting.
- The trimmer will not cut more than the set trimming height.
- The actual hair length will be longer than the set trimming height.

### Setting

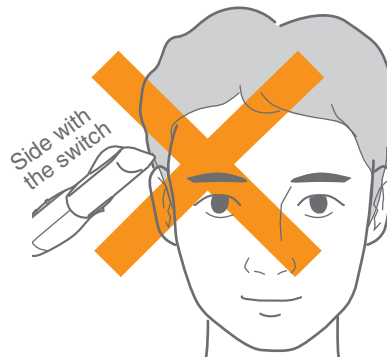
### Length of hair

<b>5</b>	approximately 25 - 40 mm (15/16" - 1 9/16")
<b>4</b>	approximately 20 - 30 mm (13/16" - 1 3/16")
<b>3</b>	approximately 15 - 20 mm (9/16" - 13/16")
<b>2</b>	approximately 10 - 15 mm (3/8" - 9/16")
<b>1</b>	approximately 5 - 10 mm (3/16" - 3/8")

## Cutting the sides and back



Cut from the sides and back to around the ear, the collar area and the nape of neck, adjusting the cutting height from 25mm (15/16") to 5mm (3/16").



Do not use the trimmer switch side up as shown in the illustration on the left. This will result in cutting more than the desired length.

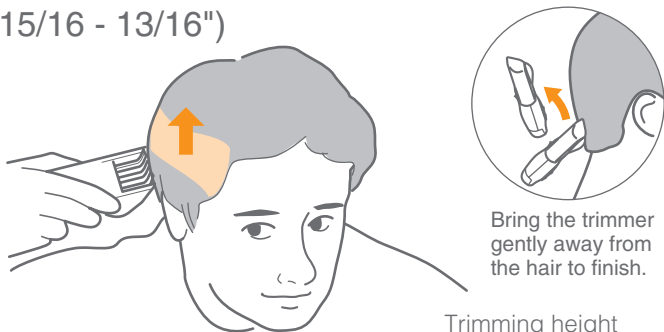
- Make sure the switch is facing downwards during use.

## 1 Cutting the sides to the back →

Trimming height  
25 to 20mm  
(15/16 to 13/16")

Cut from  
25 - 20mm  
(15/16 - 13/16")

Make sure the switch is facing downwards and cut by moving the trimmer upwards.

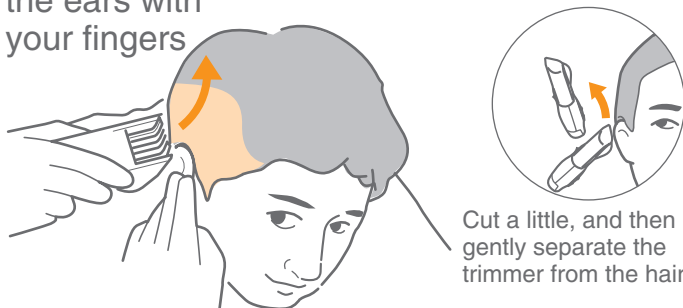


## 2 Cutting around the ears →

Trimming height  
15 to 10mm  
(9/16 to 3/8")

Hold down the ears with your fingers

Make sure the switch is facing downwards and cut by moving the trimmer upwards.

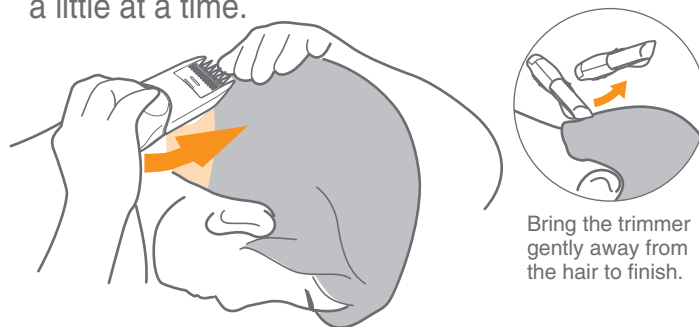


## 3 Cutting the nape of the neck →

Trimming height  
10 to 5mm  
(3/8 to 3/16")

Slowly and carefully cut a little at a time.

Make sure the switch is facing downwards and cut by moving the trimmer upwards.



## 4 Cutting between the sides and back

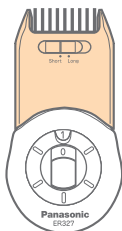
Cut between the already cut sides and back bit by bit with the use of the hair clipper attachment.

Make sure the switch is facing upwards and cut by moving the trimmer downwards.



# Overall hair cutting

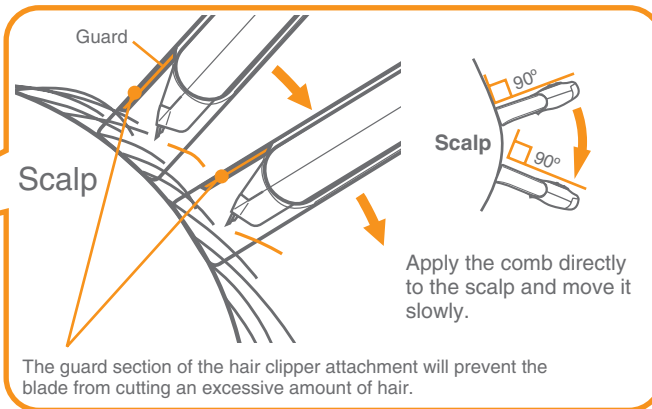
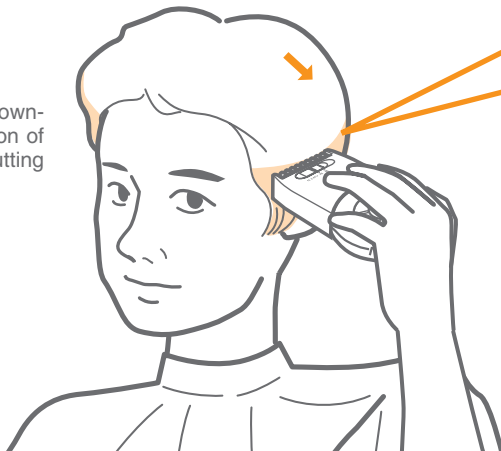
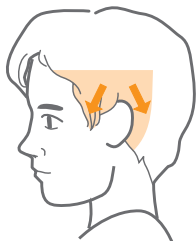
\*Cutting areas with excessive hair.



Having secured the hair clipper attachment

Make sure the switch is facing upwards and cut by moving the trimmer downwards.

- Move the trimmer downwards in the direction of the arrows when cutting around the ears.



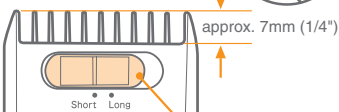
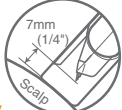
\* Do not use the trimmer for the areas listed below.

- Do not move the trimmer against the direction in which the hair lays.
- On short hair and hair with a tendency to stand up, such as cropped hair (tufting hair).
- On scarce or thin areas.
- On the crown.

## Selecting the thickness of the finish

### Short finish

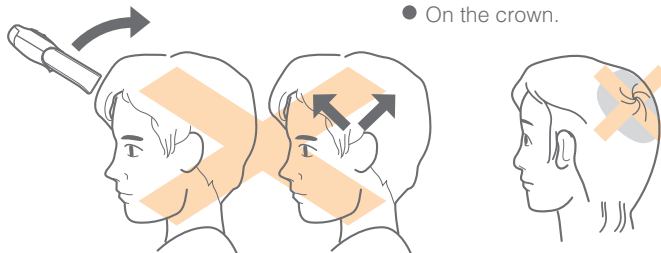
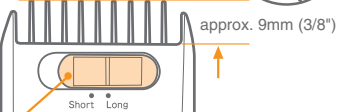
(Finishing thickness of approximately 7mm)  
(Approx. 1/4")



Finish adjustment switch

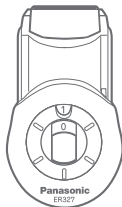
### Long finish

(Finishing thickness of approximately 9mm)  
(Approx. 3/8")





# Fine trimming

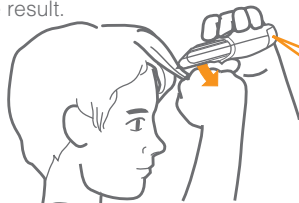


Without any attachments

## Thinning the bangs

Make sure the switch is facing upward and move the thinning plate down the hair as if combing.

- Little by little comb the trimmer through the hair approximately 2-3cm (13/16-1 3/16") from the tip of the fringe while continuously checking the result.

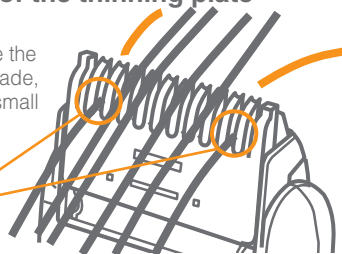


Make sure the switch is facing upward.

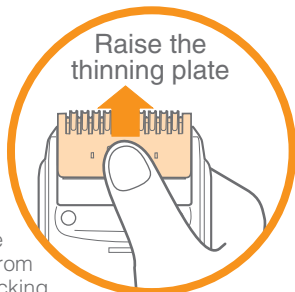
### The mechanism of the thinning plate

- The thinning plate will regulate the amount of hair reaching the blade, enabling the hair to be cut in small portions.

Cuts only the hairs that enter these areas.



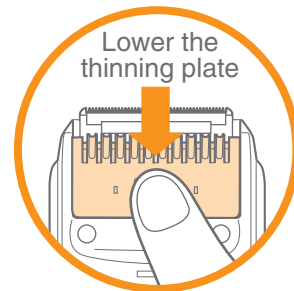
Raise the thinning plate



## Trimming the sideburns



Lower the thinning plate



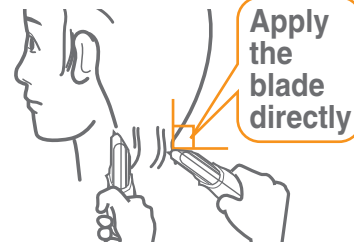
Apply the cutting blade directly

Cutting around the collar, the nape of the neck, and around the ears

**Trimming around the collar, the nape of the neck, and around the ears**

Align the trimmer with the line leading down from the ear

- Apply the blade directly to the skin.

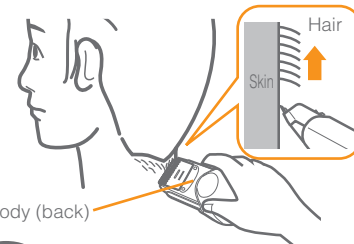


Apply the blade directly

**Cutting the fine hairs on the back of the neck**

Turn the body upside down and cut against the direction the hair lays.

- Apply the blade directly to the skin.



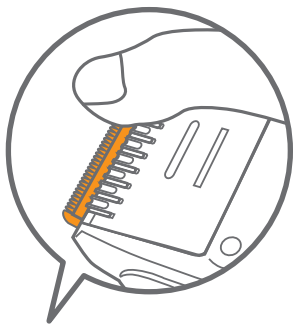
Body (back)

# After use

Turn the switch to [0].

## Removing the blade

Make sure the Pop-up Trimmer is in the [Down] position.

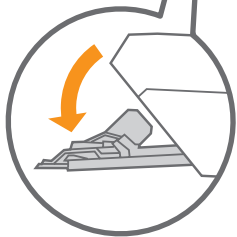


### Press the blade



Apply slight pressure from the back of the trimmer against the blade. The blade should gently pop-out.

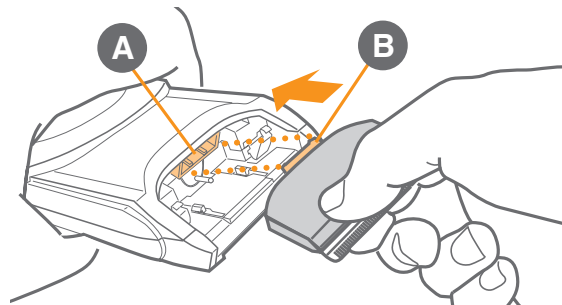
\*Place your other hand under the blade to prevent it from falling.



## Attaching the blade

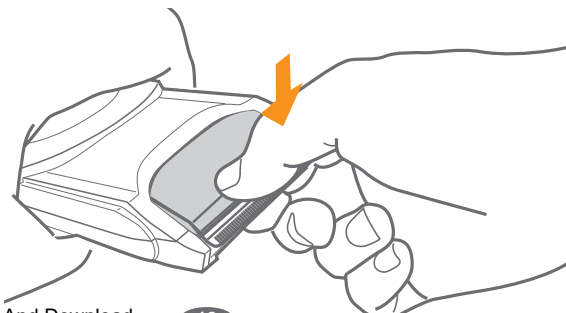
### 1 Insert the blade

Insert the hook **B** into the slot **A**.



### 2 Press

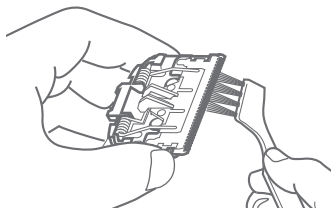
Until there is a click.



# How to clean

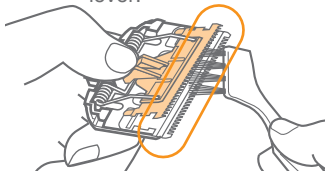
Turn the switch to [0] and clean the blade.

- 1 Remove the hair shavings from the blade.**

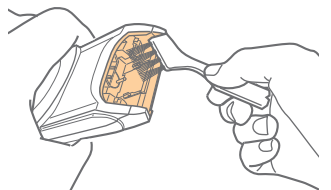


- 2 Between the blades.**

- Remove the hair trimmings while pressing down on the cleaning lever.

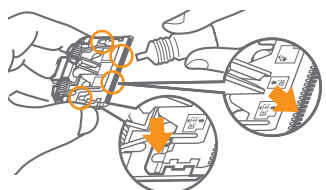


- 3 Remove the hair trimmings that adhere to the body.**



- 4 Apply oil (to all 4 sections).**

- 1 to 2 drops in each area indicated with the arrows.



- Clean the blade after every use. (Failure to observe this will blunt the blade.)

## Ratings and Specifications

<b>Power source</b>	Battery
<b>Type of batteries</b>	Two “AAA” alkaline batteries (not included)
<b>Weight</b>	110 g (3.9 oz.) (Including the batteries)

This product is intended for household use only.

**READ ALL INSTRUCTIONS BEFORE USE.**

## Free Manuals Download Website

<http://myh66.com>

<http://usermanuals.us>

<http://www.somanuals.com>

<http://www.4manuals.cc>

<http://www.manual-lib.com>

<http://www.404manual.com>

<http://www.luxmanual.com>

<http://aubethermostatmanual.com>

Golf course search by state

<http://golfingnear.com>

Email search by domain

<http://emailbydomain.com>

Auto manuals search

<http://auto.somanuals.com>

TV manuals search

<http://tv.somanuals.com>