

103-inch: The world's largest* 1080p Full HD Plasma



Panasonic 103-inch Full HD Plasma - the viewing experience just got bigger.

FULL HD
1080p

Panasonic
ideas for life



103 - inch Ultimate Full HD Plasma Displays: Unleashing all the Beauty of Full HD

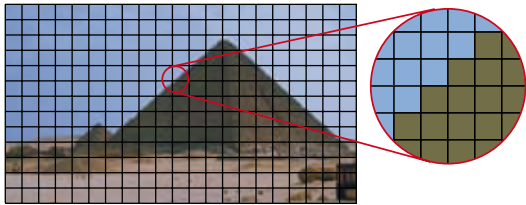
Panasonic's new 103-inch Plasma incorporates a host of leading edge technologies to reproduce clear, brilliant images with exceptional detail, true Full HD resolution and outstanding depth of perception. The 103-inch screen has 1080p (progressive) HDTV resolution, and provides smooth, sharp motion images, true-to-life colour and can deliver more than two million pixels of performance.

Advanced Technologies Deliver Superb Full HD Image Quality

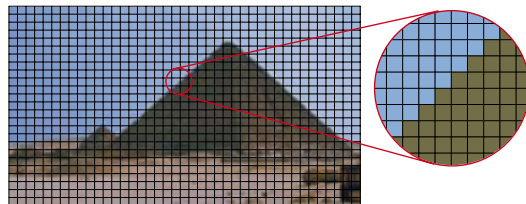
True Full HD Images

A Huge Screen — and Twice as Much Image Information

Our new Full HD 103-inch plasma features about 2 million pixels (1920 horizontal x 1080 vertical) — about twice as many as conventional HD models.



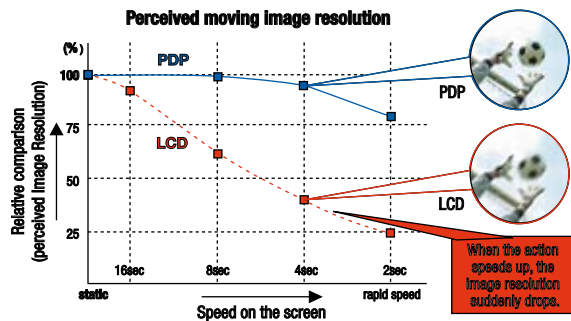
Conventional



Full HD Plasma Panel

Superior Moving Image Resolution

Panasonic brings out all the beauty inherent in Full HD, reproducing crisp, sharp images that move smoothly.

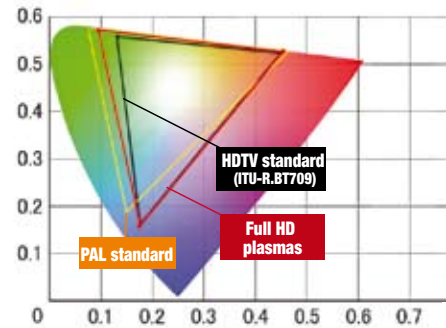


Superior Colour Reproduction

Reproducing the Entire HDTV Colour Range

Panasonic's 103-inch plasma reproduces the colour range specified in the HDTV standard (ITU-R. BT709), so images are natural-looking and faithful to the original HD source.

Reproduces the full range of colours specified in HDTV broadcast standards.



Digital Colour Reality for Accurate Reproduction of the Ambience in Movies

In Super Cinema mode, Digital Colour Reality boosts precision in the digital control of colour and brightness video data by a factor of four (white chromaticity fluctuation of less than 0.003). By continuously adjusting the white balance and performing gamma correction as scenes change, this technology accurately expresses the warmth of light, and reproduces delicate shading.



Faithfully expresses subtle colour differences in bright and shaded areas.



Expresses the natural warmth of sunlight, and conveys subtle colour differences in bright and shaded areas.

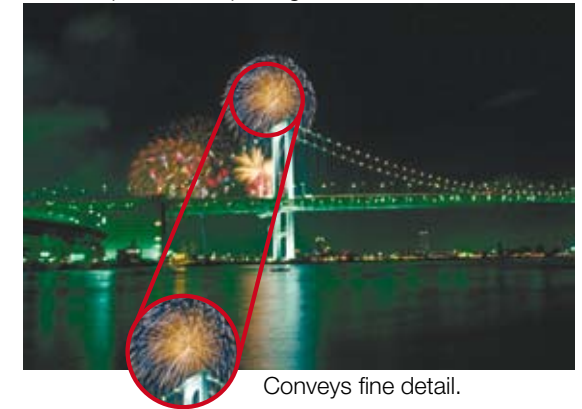
4,096 Equivalent Steps of Gradation

4,096 Gradation Steps — Industry Leading

Thanks to Panasonic's advanced 16-bit digital image processing, our 103-inch Full HD plasma reproduces crisp, clear motion picture images with the equivalent of 4,096 gradation steps. This industry-leading gradation level not only creates richer, deeper blacks, it also enhances image depth, conveys fine detail, and recreates ambience with the kind of accuracy only a Full HD plasma display can offer.



4,096 equivalent steps of gradation

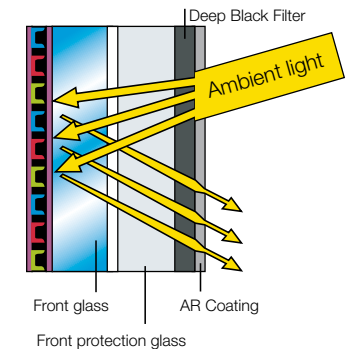


Conveys fine detail.

New Deep Black Filter with AR Coating

Deep, Crisp Blacks and the Industry's Highest Contrast

Our New Real Black Creation technology achieves up to 5000:1 contrast - industry leading.



FULL HD
1080p

Explore a Wider World of Video Applications

For Applications Demanding Extremely Clear, High-Resolution Still and Motion Images

PRESENTATIONS

- Our 103-inch Full HD Plasma incorporates a new TY-FB9FDD DVI-D terminal board that supports UXGA and WUXGA signals (simplified display mode). When connected to a PC, Panasonic's 103-inch plasma provides a big-screen display of data such as CAD images with outstanding clarity, detail and colour accuracy.



For Applications Demanding the Highest Colour Accuracy

TV/VIDEO PRODUCTION

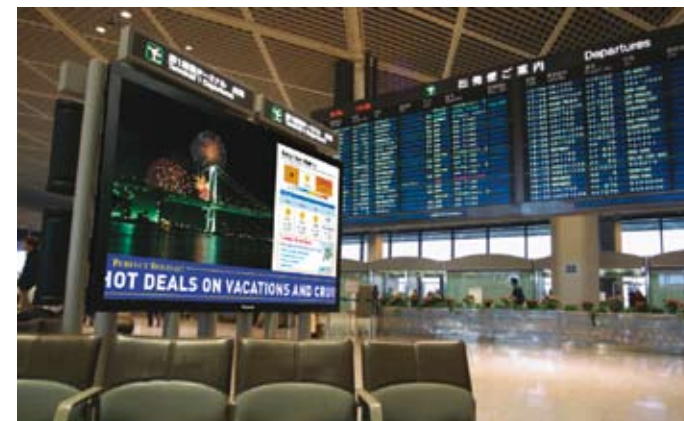
- Digital Colour Reality reproduces colours the way movie makers and colourists meant them to be seen.
- Our 103-inch model reproduces colours across the entire HDTV-standard range, so colours from HD sources are faithful and natural-looking.



For Applications Demanding Visible Image Textures

DIGITAL SIGNAGE

- With an industry-leading 4,096 gradation steps, Panasonic's Full HD 103-inch plasma realistically conveys the texture and surface quality of objects.
- With the 103-inch model in portrait orientation, images of people can be shown in actual life-size to draw attention.



MONITORING

- Our 103-inch model is perfect for control rooms where crystal-clear display of detailed information is essential. The super-size screen makes it easy for everyone to see the information.



MUSEUMS/EXHIBITS

- Biggest in the industry, our 103-inch model is easily visible even in large spaces, so you can deliver more information to a greater number of people.



MINI-THEATRES

- Panasonic's 103-inch Full HD plasma provides outstanding motion image resolution, so movies are clear and sharp, making it suitable for mini-theatre applications.



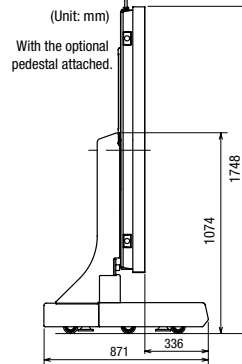
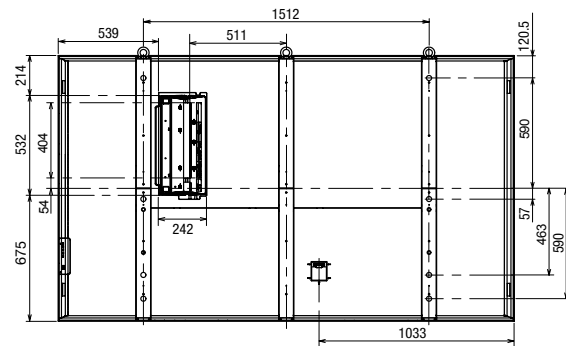
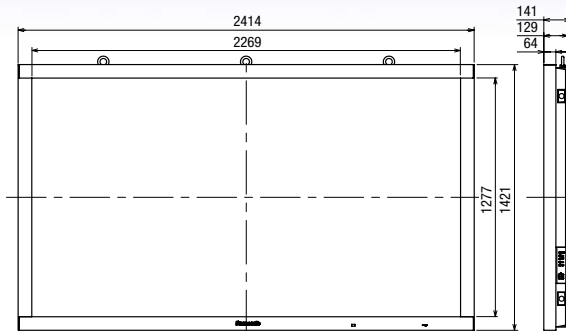
FULL HD
1080p

The world's largest 1080p HD Plasma



Dimensions

TH-103PF9WK



Commodity Name	103 - inch HD Plasma Display
Model Number	TH-103PF9WK
Cabinet Colour	Black
DISPLAY	
Screen Size (diagonal)	103-inch
Aspect Ratio	16:9
Effective Display Area (W x H)	89.3" x 50.3" (2,269 x 1,277 mm)
Resolution (H x V)	1,920 x 1,080 pixels
Pixel Pitch (H x V)	1.182 x 1.182 mm
Contrast Ratio (Bright-area*1)	Max. 5,000:1 (400:1)
Gradation	4,096 steps (equivalent)
SIGNAL COMPATIBILITY	
Scan Rate	Horizontal frequency: 15 — 110 kHz; Vertical frequency: 48 — 120 Hz
PC Signal Compatibility	VGA, SVGA, WGA, WSVGA, XGA, SXGA, XGA+, SXGA+, WXGA, UXGA, WXGA ... (Compressed)
Supported Video Standards	NTSC, PAL, PAL 60, SECAM, Modified NTSC
Video Signal Compatibility	525 (480/60i, 60p; 625 (575/50i, 50p; 750 (720/60p, 50p; 1125 (1080/60i, 50i, 24p, 24sF, 25p, 30p, 60p, 50p; 1250 (1080/50i
INPUT/OUTPUT	
Fixed Terminals	
PC IN	Mini D-sub 15pin x 1; Analogue RGB/Component; Plug & Play (VESA DDC 1/2B)
AUDIO IN	M3 jack x 1
SERIAL	D-sub 9-pin x 1, External control, RS-232C compatible
Interchangeable Terminals	
Slot 1	Vacant
Slot 2	DVI-D In (DVI 24-pin x 1), Audio In (M3 jack x 1; L/R: 0.5 Vrms)
Slot 3	Component In (BNC x 3, Analogue RGB/Component), Audio In (L/R) (RCA pin jack)
ELECTRICAL	
Power Requirements	220 - 240 V AC, 50 Hz/60 Hz
Power Consumption	1500 W
Power off condition	0.5 W
Stand-by condition	Save Off: 1.5 W, Save On: 1.3 W
SOUND	
Audio Output	Line Out (L/R)
MECHANICAL	
Dimensions (W x H x D*2)	2,414 x 1,421 x 129 mm
Weight (approx.)	220 kg
OPERATING ENVIRONMENT	
Temperature	0C — 40C
Humidity	20% — 80% (Non condensation)
Altitude	0 — 2,400 m
RADIATION REGULATIONS	
	CISPR22 Class-B
SAFETY STANDARDS	
	AS/NZS60065, GOST12.2.006-87, SASO, IEC60065

*Worlds largest as at January 2007

For more information on the Panasonic 103 - inch Full HD Plasma contact your local dealer or visit www.panasonic.com.au or call 132 600

Panasonic
ideas for life

Free Manuals Download Website

<http://myh66.com>

<http://usermanuals.us>

<http://www.somanuals.com>

<http://www.4manuals.cc>

<http://www.manual-lib.com>

<http://www.404manual.com>

<http://www.luxmanual.com>

<http://aubethermostatmanual.com>

Golf course search by state

<http://golfingnear.com>

Email search by domain

<http://emailbydomain.com>

Auto manuals search

<http://auto.somanuals.com>

TV manuals search

<http://tv.somanuals.com>