

# Panasonic

## ideas for life

# BB-HCM371

IPv4/v6 Audio 2-way Type  
Outdoor/Wireless Network Camera



▲IPv6 Ready Logo\*1

### High speed wireless LAN

IEEE 802.11g has 2 modes: 1. the 802.11g only mode, and 2. the 802.11g and 802.11b simultaneous mode. Also, the wireless LAN function can be suspended.

### Splash Resistant body for indoor and outdoor use

Your Panasonic Network Camera has a splash resistant body. The splash resistant body allows the camera to be used indoors or outdoors.

### Two-Way Voice Communications

Use of the built-in microphone and a separately purchased amp-equipped speaker enables two-way voice communication (transceiver system)\*2 between the network camera and a PC used to monitor the camera image. Voice transmission and reception can be switched easily from the PC used to monitor the image. For example, it allows people in a head office to provide instructions or messages to people on a sales floor while observing the image on their PC.

### Enhanced Image Expression

#### CCD Sensor

The BB-HCM371 features a CCD for sharp image expression.

#### Image Refreshing Speed

The image refreshing speed (maximum) has been increased to 30 images/sec\* for smoother displays of moving images.

\*Image Resolution: 320 x 240 or 160 x 120.

#### Color Night View Mode

The Color Night View Mode brings the minimum light requirement from 3 lx down to 0.2 lx, letting you capture images even in dimly lit places.

#### Color night view



#### Ordinary camera view



### Standard SD Memory Card Slot

#### Image recording function



Images captured by the network camera can be recorded directly onto an SD Memory Card (sold separately). \*Voices cannot be recorded.

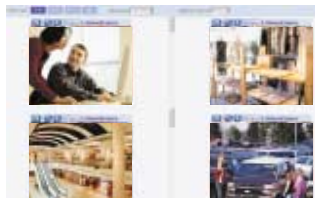
#### • Number of Recording Files per SD Memory Card (Image Quality: Standard)

| SD Memory Card Model No.       | Resolution                         |                                    |                                    |
|--------------------------------|------------------------------------|------------------------------------|------------------------------------|
|                                | 640 x 480                          | 320 x 240                          | 160 x 120                          |
| <b>1GB</b><br>(RP-SDHe1GU1A)   | Approx. 33KB/file<br>29,000 Images | Approx. 16KB/file<br>58,000 Images | Approx. 5KB/file<br>180,000 Images |
| <b>512MB</b><br>(RP-SDH512u1A) | Approx. 14,000 Images              | Approx. 29,000 Images              | Approx. 94,000 Images              |
| <b>256MB</b><br>(RP-SDH256U1A) | Approx. 7,000 Images               | Approx. 14,000 Images              | Approx. 47,000 Images              |
| <b>128MB</b><br>(RP-SDH128U1A) | Approx. 2,000 Images               | Approx. 7,000 Images               | Approx. 23,000 Images              |
| <b>64MB</b><br>(RP-SDo64BPPA)  | Approx. 1,000 Images               | Approx. 3,000 Images               | Approx. 11,000 Images              |

\*The operation of SD Memory Cards not listed above cannot be guaranteed.

### Multi-Camera Setup Supported

Simultaneous monitoring of images using up to four network cameras. Images from up to four camera units can be assigned as a group, and the monitor display can be switched to any of three image groups. This enables simultaneous display of the images from up to 12 camera units, with no audio.



### Alarm-Controlled and Timer-Controlled Image Transfer Functions

The Alarm-Controlled Image Transfer function uses a commercially available external Sensor or switch and sends the image only when there is an action such as turning on the light or opening the door. The Timer-Controlled Image Transfer function automatically transmits images according to the set time zone and the day of the week. These convenient functions eliminate your need to constantly check the image.

\*When e-mail function is used to transfer images or messages, e-mail transmission may not be possible in some cases due to the mail server authentication system (SMTP authentication, etc.) used by your Internet service provider.

\*The image transfer functions can be used only with a PC. With a cell phone, only the e-mail transmission function can be used.

### Supporting Viewnetcam.com service

Viewnetcam.com service allows you to access the camera over the Internet with your favorite domain name (e.g. bob.viewnetcam.com) instead of a global IP address. For more information on Viewnetcam.com service, Please access [www.viewnetcam.com](http://www.viewnetcam.com) for more information.



### External Output Control

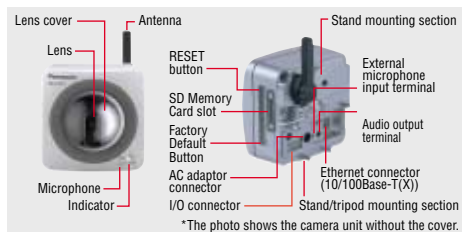
This provides ON/OFF operation of an externally connected device. For example, it can be used to turn on a light when the surrounding area becomes dark or to turn on a buzzer in case of an emergency.

### Pan and Tilt Movement



**Pan**  
(173° maximum)

**Tilt**  
(105° maximum)



\*The photo shows the camera unit without the cover.

### IPv6-Ready

Our new network cameras allow the use of a virtually unlimited number of IP addresses\*<sup>3</sup> by supporting IPv6, a next-generation protocol. The IPv4/IPv6 dual-stack feature enables you to use IPv4 at the present and switch over to IPv6 in the future.

\*<sup>1</sup> This logo mark is issued by the IPv6 Ready Logo Program Committee, an IPv6 promotion group established mainly by the IPv6 Forum.

\*<sup>2</sup> This function can be used with a PC only. It cannot be used with a cell phone. To hear the voice transmitted from the PC, a commercially available speaker with a built-in amp must be installed. The transceiver system does not allow simultaneous transmission and reception of voices. The BB-HCM371 may require a version upgrade to operate in the IPv6 environment.

For the latest information, visit Panasonic's support Web site (<http://panasonic.co.jp/pcc/products/en/netwkcaml/>).

\*<sup>3</sup> An IP address is a unique number assigned to each user so that the user can be identified on the Internet.

\*<sup>4</sup> IPsec is an IP security protocol for data encryption standardized by IETF, an international community devoted to the standardization of Internet specifications.

### IPsec\*<sup>4</sup> Supported

IPsec is a technology used to encrypt data packets in order to prevent eavesdropping by third parties. When combined with a conventional authentication function based on user names and passwords, IPsec offers enhanced security.

### Specifications of BB-HCM371 Network Camera

| Model No.                     | BB-HCM371  |
|-------------------------------|--|
| Product type                  | Outdoor, Wireless type and voice function  |
| Image data compression system | JPEG (Motion JPEG for moving image display)  |
| Resolution                    | 640 x 480, 320 x 240, 160 x 120  |
| Image quality                 | 3 modes (Favor Clarity, Standard, Favor Motion)  |
| Frame rate* <sup>1</sup>      | Max. 30 frames/sec (320 x 240, 160 x 120), Max. 12 frames/sec (640 x 480)* <sup>2</sup>  |
| Security                      | User ID, password, IPsec   |
| Encryption algorithm          | DES-CBC, 3DES-CBC, AES-CBC   |
| IPsec function* <sup>3</sup>  | ESP encryption, EPS authentication, transport mode (main mode only)/tunnel mode IKE (Internet Key Exchange)  |
| Supported protocol            | IPv4/IPv6 dual stack<br>IPv4: TCP, UDP, IP, HTTP, FTP, SMTP, DHCP, DNS, ARP, ICMP, POP3, NTP, IPsec, UPnP<br>IPv6: TCP, UDP, IP, HTTP, FTP, SMTP, DNS, ICMPv6, POP3, NDP, NTP, IPsec |
| User access limit             | Max. 30 simultaneous accesses (max. 10 accesses with voice reception)  |
| Buffered images* <sup>4</sup> | Approx. 125 images: (320 x 240), standard image quality (approx. 16 KB per image) (without using SD Memory Card)   |
| Viewing Angle                 | 53° horizontal (total 173°)<br>40° vertical (total 105°)   |
| Pan                           | -60° up to +60°  |
| Tilt                          | -45° up to +20°  |
| Revolving speed               | Pan: Max. 80°/sec, Tilt: Max. 80°/sec  |
| Number of pixels              | 1/4 inch, approx. 320,000 pixels, CCD sensor   |
| Lens focal point              | Fixed (focal range: 0.5 m to ∞)  |
| Lens brightness               | F3.5   |
| Required light intensity      | 3 to 100,000 lx (in Color Night View mode: 0.2 to 100,000 lx)  |
| Voice direction               | Half-duplex two-way communication (transceiver system)   |
| Voice data compression system | ADPCM 32 kbps  |
| Voice band                    | 300 Hz ~ 3.4 kHz   |
| Audio input                   | Built-in microphone or external microphone (sold separately), external microphone input terminal (3.5-mm dia. mini-jack)   |
| Audio output* <sup>5</sup>    | Audio line output terminal for external speaker (3.5-mm dia. stereo mini-jack, monaural output)  |
| Standards                     | 802.11 b/g   |
| Antenna                       | Diversity  |
| Number of Channel             | 11 ch.   |
| Transmission Speed            | up to 54 Mbps.   |
| Max. Transmission Distance    | Indoor: About 120 m, Outdoor: About 600 m  |
| Security                      | WEP 64/128/152 bit   |
| Network Interface             | Ethernet (10Base-T/100Base-TX)   |
| I/O connector for sensor      | G GND<br>1 External Sensor Input<br>G GND<br>2 External Sensor Input<br>3 External Device Control Output<br>4 DC Power Output Terminal (10.5~13.5V DC)                               |
| SD Memory Card slot           | Full size (operation guaranteed for 1GB, 512MB, 256MB, 128MB and 64MB SD Memory Cards)   |
| Operating temperature         | -20°C to 50°C  |
| Operating humidity            | 20% to 90% (No condensation)   |
| Dimensions (W x H x D)        | Approx. 100 x 100 x 80 mm (Only the unit)  |
| Weight                        | 350 g (Only the unit)  |
| Power Supply                  | AC adaptor: Input 120V AC, Output 12V DC   |
| Consumption                   | 10W  |

\*<sup>1</sup> This varies depending on the subject, image quality, network environment, PC performance, etc.

\*<sup>2</sup> The image update speed may decrease when favor-motion mode is set, when images are recorded onto an SD Memory Card, and when IPsec is used, as well as due to the network environment and PC performance.

\*<sup>3</sup> Transport mode (mode for IPsec communication between terminals, for IPv4 only) operating environment: Microsoft® Windows® XP Service Pack 1 or later only, tunnel mode (mode for IPsec between VPN routers, IPv4/IPv6)

\*<sup>4</sup> The number of images that can be stored varies depending on the subject. \*<sup>5</sup> Install an amp or use a speaker with a built-in amp.

### Specifications for Compatible PC

|             | For IPv4  | For IPv6  |
|-------------|---|---|
| OS          | Microsoft® Windows® XP, Windows® 2000, Windows® Me, Windows® 98SE   | Microsoft® Windows® XP, Service Pack 1 or later                           |
| CPU         | <ul style="list-style-type: none"> <li>For monitoring of image from one camera unit: Pentium RIII (800 MHz or greater)</li> <li>For monitoring of images from multiple camera units: Pentium R4 (1.8 GHz or greater)</li> </ul> |   |
| Protocol    | TCP/IP (HTTP, TGP, UDP, IP, DNS, ARP, ICMP) protocol must be installed.   | TCP/IP (HTTP, TGP, UDP, IP, DNS, ICMPv6, NDP) protocol must be installed. |
| Interface   | 10/100-Mbps LAN card must be installed.   |   |
| Web browser | Internet Explorer 6.0 or later  |   |
| Audio       | Audio input/output function (microphone, speaker, etc.)   |   |

# Panasonic®

<http://panasonic.co.jp/pcc/products/en/netwkcaml/>

## Free Manuals Download Website

<http://myh66.com>

<http://usermanuals.us>

<http://www.somanuals.com>

<http://www.4manuals.cc>

<http://www.manual-lib.com>

<http://www.404manual.com>

<http://www.luxmanual.com>

<http://aubethermostatmanual.com>

Golf course search by state

<http://golfingnear.com>

Email search by domain

<http://emailbydomain.com>

Auto manuals search

<http://auto.somanuals.com>

TV manuals search

<http://tv.somanuals.com>