

WIRELESS DISPLAY CONFIGURATION MANUAL

CF-VDW07M & CF-VDW07HM

Windows 2000 and Windows XP

TOUGHBOOK®



Panasonic
ideas for life

INTRODUCTION

Thank you for purchasing the Panasonic Toughbook CF-VDW07 series *Wireless Display*. You are just steps away from the freedom of mobility and the power of staying in touch. With Panasonic's Toughbook *Wireless Display*, you can enjoy the constant connectivity to your laptop/desktop without being tied down to your office chair. This configuration manual explains how to set up the Wireless Display with your computer.

DISCLAIMER

No part of this manual may be reproduced in any form without the prior written permission of Matsushita Electric Industrial Co., Ltd.. No patent liability is assumed with respect to the use of the information contained herein. Some of the illustrations included with the text may differ slightly in shape from the actual items in order to make the explanation easier to understand.

Computers, computer devices, and manuals are subject to change without notice. Matsushita Electric Industrial Co., Ltd. assumes no liability for damage incurred directly or indirectly from errors, omissions, or discrepancies between the computer and the manuals.

Because of the nature of wireless communications, transmission and reception of data can never be guaranteed. Matsushita Electric Industrial Co., Ltd. assumes no liability for any inconvenience or potential loss of business which occurs as a result of lost communication opportunities arising from external causes, such as incorrect operation, or malfunction of the device or from loss of power, and for damage of any kind resulting from delay or errors in data transmitted or received using Panasonic Toughbook CF-VDW07 series *Wireless Display*, or for failure of Panasonic Toughbook CF-VDW07 series *Wireless Display* to transmit or receive such data. Panasonic Toughbook CF-VDW07 series *Wireless Display* should not be used in situations where failure to transmit or receive data could result in damage of any kind to the user or any other party, including but not limited to personal injury, death, or loss of property.

TRADEMARKS

Microsoft and Windows are either registered trademarks of Microsoft Corporation in the United States and/or other countries.




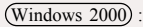
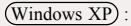
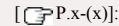

Panasonic is registered trademark of Matsushita Electric Industrial Co., Ltd..

All other brand or product names, logos, trademarks, etc. mentioned in this manual are owned by their respective companies.

TABLE OF CONTENTS

| | |
|--|----|
| Illustrations in this Manual | ii |
| First-time Operation | 1 |
| Software Installation | 1 |
| AdHoc Mode Configuration | 3 |
| Infrastructure Mode Configuration | 10 |
| Using the MeiWDS Setup Utility | 16 |
| Changing Wireless Display Settings | 18 |
| Using the Software Keyboard | 21 |
| Uninstall the Software | 23 |
| Limitation of Wireless Display Serial Port | 23 |
| Usage Precautions | 24 |
| Limited Use License Agreement | 25 |

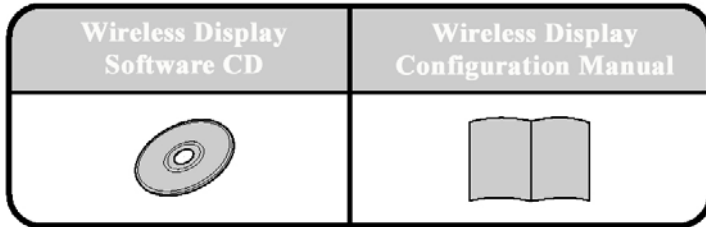
Illustrations in this Manual:

| | |
|---|--|
|  | The Note icon points out items of interest or importance. |
|  | The Caution icon warns you about problems should be watched out for or precautions should be taken. |
|  | The Warning icon indicates the existence of a hazard that could result in damage to equipment or property if the safety instruction is not observed. |
| [Start]-[Shut Down]: | This illustration means to click [Start], then to click [Shut Down]. (For some applications, you may need to double-click.) |
| [Enter]: | This illustration means to press the [Enter] key. |
| [Ctrl] + [Alt]: | This illustration means to press and hold the [Ctrl] key, then press the [Alt] key. |
|  | Information for Microsoft Windows 2000 Professional users. |
|  | Information for Microsoft Windows XP users. |
|  | This illustration means to refer to a certain instruction at certain page as indicated. For example [ , P.5-(1~3)] means please refer to instructions (1) through (3) at page 5. |

* Some of the illustrations in this manual may differ slightly in shape from the actual items.

First-time Operation

This manual will walk you through the configurations of the *Wireless Display* with your computer. In the package, please find the following items as shown in the figure below. If any of these items is missing or not working properly, please contact Panasonic Technical Support.



NOTE


- When installing software in a computer without the CD-ROM drive or PCMCIA slot, copy all files in the *Wireless Display Software CD* to the hard disk, then install the software from the hard disk.
- In this manual, "L" is the CD-ROM drive letter and "x" denotes a numeral. You can change these letters to suite your preference.
- When using Windows 2000 and Windows XP please logon as the administrator.

NOTE

- Depending on the wireless network card you use, the *Wireless Display* might not function properly with you computer. The following wireless network cards are recommended when using with the *Wireless Display*.
 - Intel(R) PRO/Wireless LAN 2100 3B Series
 - Proxim Orinoco 802.11b Silver/Gold Series
 - Cisco Aironet 340/350 Series
 - Symbol Spectrum24 Series
- Depending on the capability of your computer's video chip-set, the *Wireless Display* might not function properly with your computer. Please consult this with your system administrator or the reseller.

Install the necessary Software

I Install MeiWDS program:

1. Select [Start] - [Run], input [L:\meiwds\setup.exe] and select [OK]. Follow the on-screen instructions.
2. Restart the computer.
3. After restart, the *Wireless Display Setup Utility* (MeiWDS) icon  will appear on the System Tray.

Software Installation

I Install Software Keyboard:

Select [Start] - [Run], input [L:\softkb\setup.exe] and select [OK]. Follow the on-screen instructions.

III Install the Serial Port Driver of the Wireless Display:

NOTE

If you are not using the serial port on the *Wireless Display*, you can skip the installation of the serial port driver.

Windows 2000

1. Select [Start] - [Setting] - [Control Panel] - [Add/Remove Hardware], then select [Next].
2. Select [Add/Troubleshoot a device], then select [Next].
3. Select [Add a new device], then select [Next].
4. Select [No, I want to select the hardware from a list], then select [Next].
5. Select [Port (COM & LPT)], then select [Next].
6. Select [Have Disk].
7. Select [Browse..]. Go to [L:\wserial\wdseral], then select [Open].
8. Click [OK].
9. Select [WDSP COM Port], then select [Next].
10. Select [Next], then select [Finish].
11. Restart the computer.
12. Select [Start] - [Setting] - [Control Panel] - [System] - [Device Manager], and confirm that [WDSP COM Port (COMx)] is listed under [Port (COM & LPT)].

Windows XP

1. Select [Start] - [Setting] - [Control Panel] - [Add Hardware], then select [Next].
2. Select [Yes, I have already connected the hardware], then select [Next].
3. Select [Add a new hardware device], then select [Next].
4. Select [Install the hardware that I manually select from a list (Advanced)], then select [Next].
5. Select [Port (COM & LPT)], then select [Next].
6. Select [Have Disk].
7. Select [Browse...]. Go to [L:\wserial\wdseral], then select [Open].
8. Click [OK].
9. Select [WDSP COM Port], then select [Next].
10. Select [Next], then select [Finish].
11. Restart the computer.
12. Select [Start] - [Setting] - [Control Panel] - [System] - [Device Manager], and confirm that [WDSP COM Port (COMx)] is listed under [Port (COM & LPT)].

NOTE

The softwares are installed in "C:\Program Files\Panasonic".

AdHoc Mode Configuration

Setup the Wireless Display in AdHoc Mode

NOTE

Before setting up the *Wireless Display* with your computer, please make sure your computer is wireless LAN ready. Meaning that your computer is equipped with a properly functioning 802.11b wireless network card.

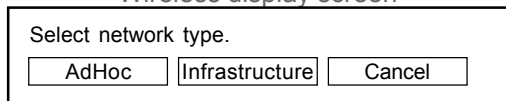
CAUTION

If your computer has firewall protection software installed (ie. Black-Ice or ZoneAlarm), please disable the firewall since it might prevent the *Wireless Display* from establishing connection with your computer. Please consult with your system administrator on how to configure your firewall software.

I Get the Information You Need:

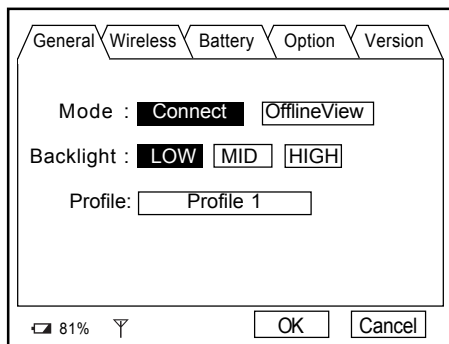
1. Insert the battery into the *Wireless Display*, connect the *Wireless Display* to a power outlet, and turn on the *Wireless Display*.
2. For a *Wireless Display* that has never been configured before, the following screen will appear on the display. If a different screen appears on your display, please follow step 3 to get to this screen; otherwise, please skip to step 6.

<Wireless display screen>



Select network type.

3. Press the MENU button on the *Wireless Display*. The following screen is displayed.



General \ Wireless \ Battery \ Option \ Version

Mode :

Backlight :

Profile:

81%

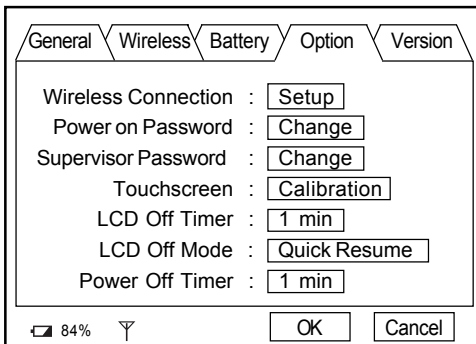
Power Switch



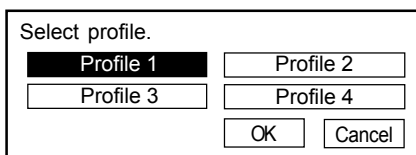
Menu Button



4. Select [Option] using the stylus. The screen shown here will be displayed.



5. Select [Setup]. The screen shown here will be displayed. *Wireless Display* can save up to four profiles. [Profile 1] is used in this manual. Select [Profile 1]. Hit [OK].



6. Select [AcHoc]. The screen shown here will be displayed. This information is needed to setup your computer.

CAUTION

Do not select [Connect] until step 21 is completed.

NOTE

The *Wireless Display* will turn off automatically after 10 minutes have elapsed. In this case, start the procedure from step 1.

Change setting on host PC to the following value, reboot the host PC, then select "Connect" below.

Wireless LAN card
 Network Type : AdHoc
 SSID : cfvdw07-xxxxx
 WEP Encryption : disable
 TCP/IP Class A Class B Class C
 IP Address : 10.57.148.205
 NetMask : 255.0.0.0
 MeiWDS
 AES Encryption : disable
 Password : wdsp

NOTE

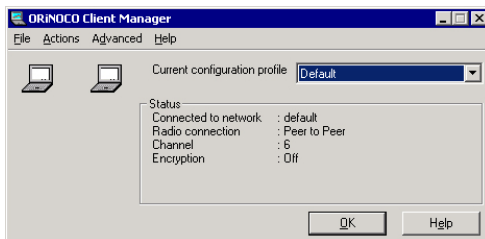
In this screen, you can setup the *Wireless Display* to work on address class A, B, or C by selecting one of the , , or tabs.

* is used in this manual.

AdHoc Mode Configuration

I Create a Profile for the 802.11b Network Adapter:

7. At your computer, launch the configuration utility of your 802.11b wireless network card. Following is a sample window that could appear on your computer's monitor/LCD.



This screen is a sample.

NOTE

- Depending on the brand of network card you use, the utility will appear differently. Throughout this manual, the configuration utility, Client Manager from Orinoco Wireless, is used as an example. Please match the settings accordingly with your utility.
- If you are using a CISCO Aironet 340/350 series wireless adapter, please disable LEAP.

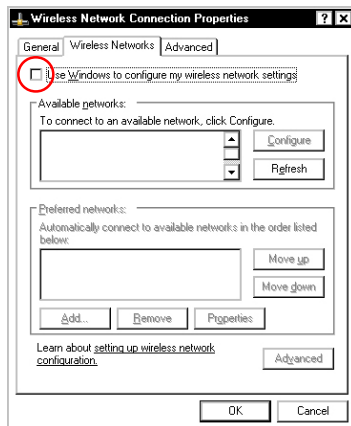
NOTE

Windows XP has the ability to manage profile settings for wireless network adapters. Users can either use the Windows XP's management or the adapter's configuration utility to create/edit profiles. In general, a utility bundled with the adapter provides additional functionality.

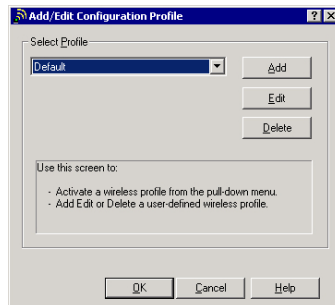
This manual choose NOT to use the Windows XP's wireless network adapter management as examples. For how to use Windows XP's wireless network adapter management, please refer to Windows XP user manual.

To ensure the adapter's utility is the primary management utility, please make sure Windows XP's management is disabled:

- i) Click [Start] - [Control Panel] - [Network Connections].
- ii) Right click on [Wireless Network Connection x] of the wireless network card using with the Wireless Display, and select [Properties].
- iii) Select [Wireless Networks] tab. The window as shown on the right side is displayed.
- iv) Uncheck the "Use Windows to configure my wireless network settings" box.
- v) Click [OK] to exit out of the "Wireless Network Connection Properties" window.

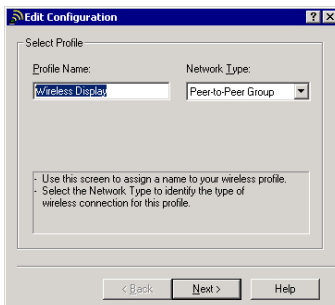


8. First, create a profile that will be used for communicating with the *Wireless Display*. Select [Actions] - [Add/Edit Configuration Profile]. The following window is displayed.



This screen is a sample.

9. Click [Add]. The following window is displayed. Create a name for this profile in the "Profile Name" box, and change the "Network Type" to [Peer-to-Peer Group].

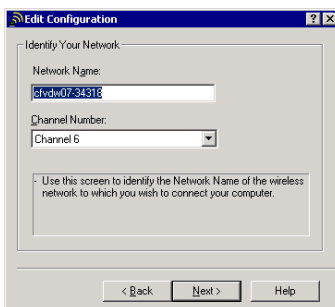


This screen is a sample.

10. Click [Next]. The following window is displayed. In "Network Name" box, input the SSID as shown on your *Wireless Display*.
[P.4-(6)]

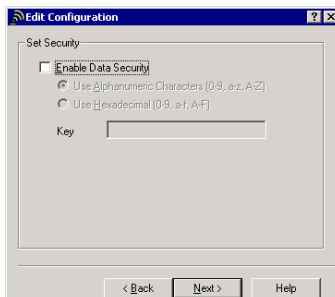
CAUTION

For use in Canada, set the "Channel Numebar" to [Channel 11] only.



This screen is a sample.

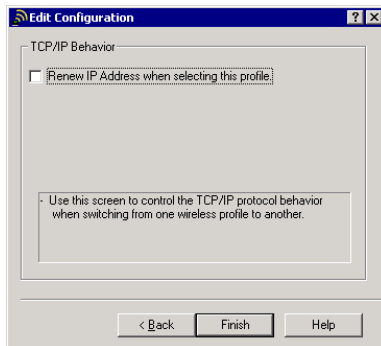
11. Click [Next]. The following window is displayed. Do not enable the data security for the initial setup. The data security can be enabled after the communication between the computer and the *Wireless Display* is established.



This screen is a sample.

AdHoc Mode Configuration

- Click [Finish] to exit out the profile setting. Please make sure to exit out of the network adapter configuration utility so the settings take effect immediately.



This screen is a sample.

III Input the IP Address:

13. Windows 2000

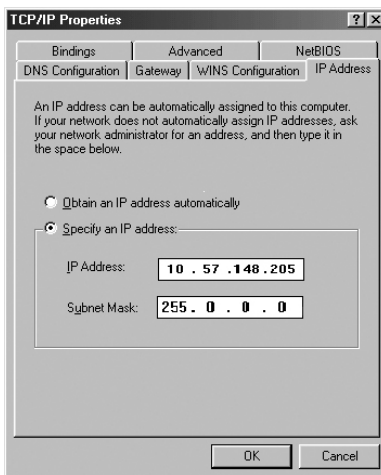
Select [Start] - [Settings] - [Control Panel] - [Network] - [Dial-Up Connection] - [Local Area Connection x]. The following window is displayed.

NOTE

Please select the [Local Area Connection x] of the wireless network card that will be used with the *Wireless Display*.

- Select "Specify IP Address", and enter the IP Address and Subnet Mask as shown on the *Wireless Display*. [P.4-(6)]

- Click [OK] - [OK] - [Close]. Please make sure to exit out of the "Local Area Connection x" window so that settings take effect immediately.



This screen is a sample.

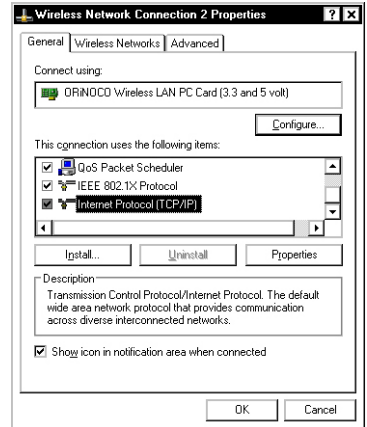
16. Windows XP

Select [Start] - [Control Panel] - [Network Connections]. Right click on [Wireless Networking Connection X] and then select [Properties]. The window as shown on next page is displayed.

NOTE

Please select the [Wireless Network Connection x] of the wireless network card that will be used with the *Wireless Display*.

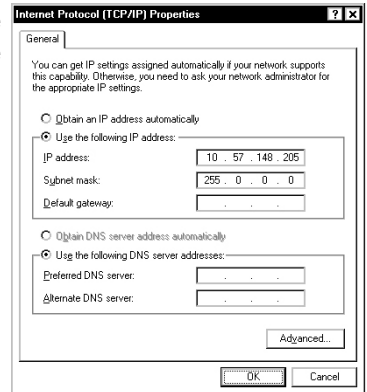
17. Highlight [Internet Protocol (TCP/IP)], and then click [Properties].



This screen is a sample.


18. Select "Use the following IP address:". Enter the IP Address and Subnet Mask as shown on the *Wireless Display*. [👉 P.4-(6)]

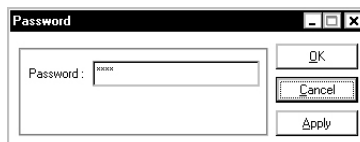
19. Click [OK] - [OK] to exit out of the setting window.



This screen is a sample.

IV Ready to Connect:

20. Left click the MeiWDS icon  in the "System Tray". The pop-up menu as shown on the right will appear. Select [Password]. The following window will appear.



This screen is a sample.





This screen is a sample.

21. Please enter the password as shown on the *Wireless Display* in the "Enter password" field above. The default password is "wdsp". [👉 P.4-(6)]

AdHoc Mode Configuration

NOTE

- The *Wireless display* can not connect to the computer if the password is entered incorrectly.
- The user can change the password after the initial connection is established. The new password will be updated automatically in the "Password" field on the system tray.

22. The setting is completed. Select [Connect] on the *Wireless Display*. The display will attempt to establish connection with the computer. If the connection is successful, the MeiWDS icon in the "System Tray" will change from  to .

NOTE

Once the communication is established, the "Wireless Display Setup Utility" will become accessible. User will then be able to launch the "Wireless Display Setup Utility", which can be used to modify the display's settings.



To access the utility:

Windows 2000

Click [Start] - [Programs] - [Panasonic] - [Wireless Display Setup Utility].

Windows XP

Click [Start] - [All Programs] - [Panasonic] - [Wireless Display Setup Utility].

NOTE

Windows XP

Windows XP's "Fast User Switching" function is not supported by the *Wireless Display*. A warning message as shown on the right side will appear if the "Fast User Switching" function is enabled. Click [OK] to close the warning message.



To disable the "Fast User Switching" function:

Click [Start] - [Control Panel] - [User Accounts]. Click on "Change the way user log on or off". The following window will appear.

- Uncheck "Use Fast User Switching".
- Click [Apply Options].
- Close the "User Accounts" window.
- Close the "Control Panel".



Infrastructure Mode Configuration

Setting up the Wireless Display for Infrastructure Mode

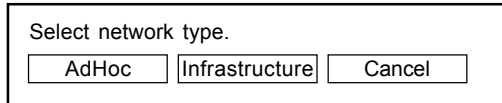
Method 1

Setup Infrastructure Directly:

By default under Infrastructure Mode, the *Wireless Display* will attempt to communicate with an access point having the SSID of "cfvdw07" and WEP encryption disabled. If you have an access point with the same settings as described above in your network environment, the *Wireless Display* can be configured in Infrastructure Mode with the computer directly.

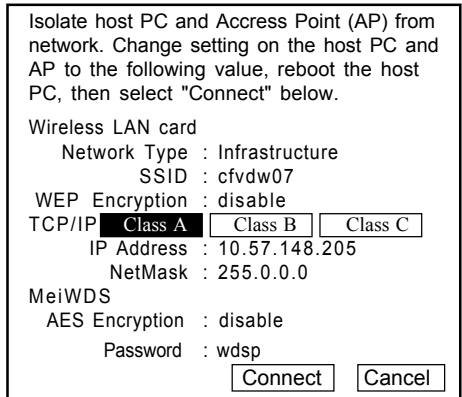
I Get the Information You Need:

1. Turn on the *Wireless Display*. The following screen is displayed. If a different screen appears, please follow steps 3 through 6 at pages 3 and 4 on how to get to this screen. [☞ P.3-(3~6)]



Select network type.

2. Select [Infrastructure]. The following screen is displayed. The default SSID is "cfvdw07" with WEP encryption disabled. This information is needed to setup the computer.



Isolate host PC and Access Point (AP) from network. Change setting on the host PC and AP to the following value, reboot the host PC, then select "Connect" below.

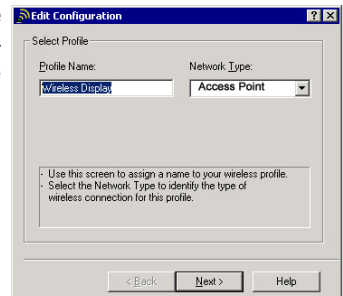
Wireless LAN card

Network Type : Infrastructure
SSID : cfvdw07
WEP Encryption : disable
TCP/IP
IP Address : 10.57.148.205
NetMask : 255.0.0.0

MeiwDS
AES Encryption : disable
Password : wdsp

II Create a Profile for the 802.11b Network Adapter:

3. Follow steps 7 through 9 on page 5 to launch the configuration utility of the network adapter and create a new profile. Create a profile name and change the "Network Type" to [Access Point]. [☞ P.5-(7~9)]



Edit Configuration

Select Profile

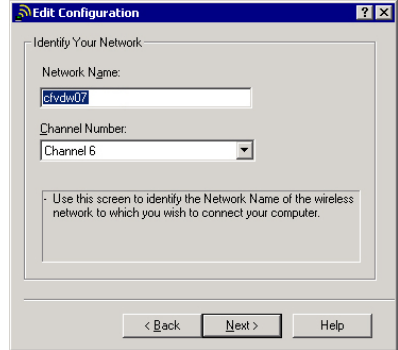
Profile Name: Network Type:

Use this screen to assign a name to your wireless profile.
Select the Network Type to identify the type of wireless connection for this profile.

This screen is a sample.

Infrastructure Mode Configuration

4. Enter the SSID as shown on the *Wireless Display*. [☞ P.10-(2)]
5. Follow steps 11 and 12 on page 6 and 7 to exit out of the configuration utility. [☞ P.6-(11~12)]



This screen is a sample.

III Input the IP Address:

6. Follow steps 13 through 19 on pages 7, and 8 on how to enter the IP address. [☞ P.7-(13~19)]

IV Ready to Connect:

7. The *Wireless Display* is now ready. Follow steps 20 through 22 on page 8 on how to establish connection with the computer. [☞ P.8-(20~22)]

Method 2

Configure from AdHoc mode to Infrastructure mode:

If the SSID of your Access Point is not "cfvbw07", you should first configure the *Wireless Display* with the computer in AdHoc mode. Secondly, use the "Wireless Display Setup Utility" to modify the *Wireless Display* to match the settings of the Access Point. Finally, change the wireless network adapter's profile to Infrastructure mode.

I Setup the Wireless Display in AdHoc Mode:

1. Follow the instructions on pages 3 through 8 on how to setup the display in AdHoc mode.

II Match the Display's Settings with the Access Point:

NOTE



Please have the information of your Access Point ready. The necessary information includes the SSID of the Access Point, and it's WEP encryption key, if WEP is enabled.

Throughout this manual, an Access Point with

SSID = OfficeAP001

64 Bit WEP Key = A24BE4190C

is used as an example. Please match the settings accordingly with your Access Point.

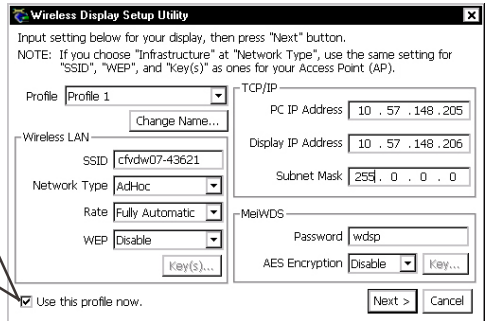
2. Select [Connect] on the *Wireless Display*. The display will attempt to establish connection with the computer. If the connection is successful, the MeiWDS icon in the "System Tray" will change from  to .
3. Click [Start] - [Programs] - [Panasonic] - [Wireless Display Setup Utility] to launch the "Wireless Display Setup Utility". The following window will appear and prompt for password.



This screen is a sample.

4. No default password is set for the "Wireless Display Setup Utility". Leave the field blank and click [OK]. The window as shown on the right will appear. Settings changed in this window will be updated in the *Wireless Display*.

The check in this box indicates that [Profile 1] is the current active profile.



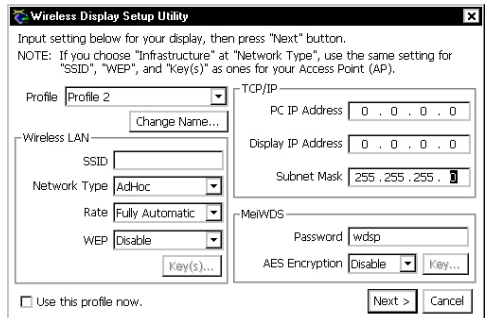
This screen is a sample.

5. [Profile 1], which is the current active profile, contains settings for the AdHoc Mode. Please write down the IP addresses in both "PC IP Address" and "Display IP Address" fields as they will be need later.

In the "Profile" drop-down menu, select [Profile 2], the window as shown below will appear. We will setup [Profile 2] for Infrastructure Mode and then enable [Profile 2] as the current active profile.

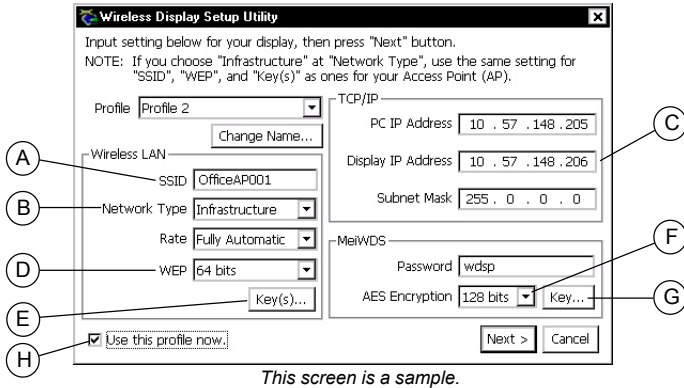
NOTE

It is also possible to modify [Profile 1] to become Infrastructure Mode; however, doing so, the AdHoc Mode settings will be lost.

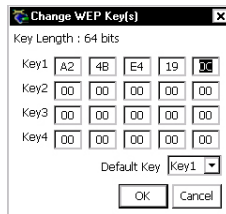


This screen is a sample.

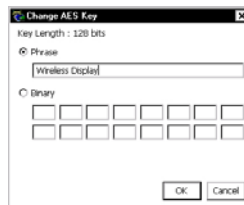
Infrastructure Mode Configuration



5. (A) Enter the SSID of your Access Point.
- (B) Change the network type to [Infrastructure].
- (C) Enter the PC IP address, Display IP address, and Subnet mask. [P.12-(4)]
- (D) Enable the WEP to [64 bits]. (If your Access Point does not uses WEP or use 128 bits encryption, change the "WEP" to [Disabled] or [128 bits] respectively.)
- (E) Click the [Key(s)...] button. The window shown below will appear. Enter the WEP key of your Access Point here. Set the "Default Key" to the one you wish to use. Click [OK] to exit out of the window.



- (F) Enable the AES to [128 bits]. (If you do not want to use AES encryption, use 192 bits encryption, or use 256 bits encryption, change the "AES" to [Disabled], [192 bits], or [256 bits] respectively.)
- (G) Click the [Key...] button. The window as shown below will appear. To use phrase generated AES key, select "Phrase" and enter a phrase in the box. To enter the AES key directly, select "Binary" and enter your AES key in the box. Click [OK] to exit out of the window.




- (H) Check the "Use this profile now" box so that "Profile 2" will become the active profile after the setup is completed.

6. Click [Next] - [OK] - [Next] - [OK] - [Finish] to exit out of the "Wireless Display Setup Utility".
8. The *Wireless Display* is now updated with the new settings. Restart the *Wireless Display*, press the MENU button on the display, then select [Wireless]. The current settings of the *Wireless Display* are listed in this screen.


NOTE

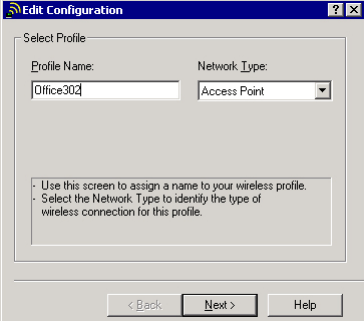
At this stage, the display can not establish connection with the computer because the display's settings have been changed. The network adapter's profile must also be changed to match with the display.

| General | Wireless | Battery | Option | Version |
|-------------------------------|----------|---------|--------|---------|
| Network Type : Infrastructure | | | | |
| SSID : OfficeAP001 | | | | |
| Channel : | | | | |
| TxRate mode : Fully Automatic | | | | |
| Encryption : 64bit | | | | |
| Rate (Tx/Rx) : / | | | | |
| Display IP : 10. 57.151.206 | | | | |
| PCIP : 10. 57.151.205 | | | | |
| Net Mask : 255. 0. 0. 0 | | | | |
| AES Encryption : 128bit | | | | |

84%  OK Cancel

III Setup the Wireless Network Adapter to Infrastructure Mode:

9. Launch the Configuration Utility of the network adapter. Select [Action] - [Add/Edit Configuration Profile] - [Add]. The following window is displayed. [ P.5-(7~9)]
10. Create a profile name in the "Profile Name" box. Change the "Network Type" to [Access Point].



Select Profile

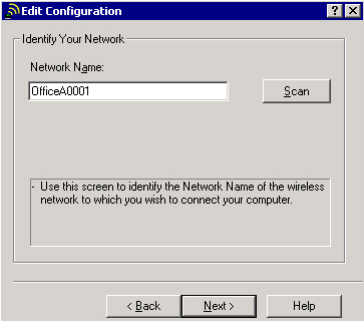
Profile Name: Network Type:

Use this screen to assign a name to your wireless profile.
Select the Network Type to identify the type of wireless connection for this profile.

< Back Next > Help

This screen is a sample.

11. Click [Next]. The following window is displayed. In the "Network Name" box, enter the SSID of the Access Point.



Identify Your Network

Network Name: Scan

Use this screen to identify the Network Name of the wireless network to which you wish to connect your computer.

< Back Next > Help

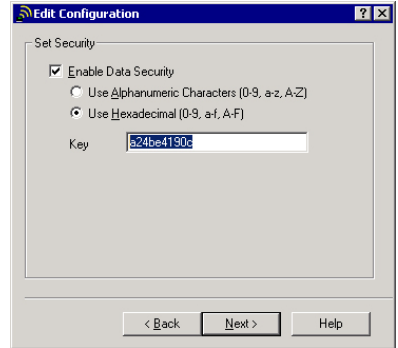
This screen is a sample.

Infrastructure Mode Configuration

- Click [Next]. The following window is displayed. Check "Enable Data Security," and enter the Access Point's WEP key.
- Click [Next] - [Finish] to exit out of the profile setting. Please make sure to exit out of the network adapter configuration utility so the settings take effect immediately.

NOTE

Some adapters' Configuration Utilities can store more than one profile. Make sure the profile you just created is selected as default.



This screen is a sample.

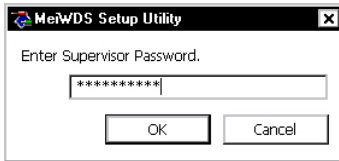
IV/Ready to Connect:

- The setting is complete. Restart the display, and the computer will now connect to the display through the Access Point.

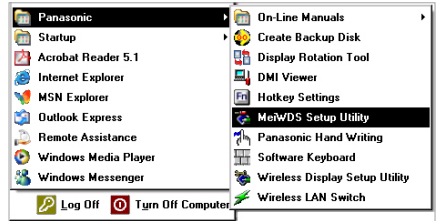
Using the MeiWDS Setup Utility

Unlike the "Wireless Display Setup Utility", which is used to modify the settings of the *Wireless Display*, the "MeiWDS Setup Utility" is used to modify the settings on the host computer side. Different from the "Wireless Display Setup Utility", the "MeiWDS Setup Utility" can be launched regardless if the *Wireless Display* is communicating with the host computer.

To launch the "MeiWDS Setup Utility", click [Start] - [Programs] - [Panasonic] - [MeiWDS setup Utility]. The following window will appear and prompt for the supervisor password.

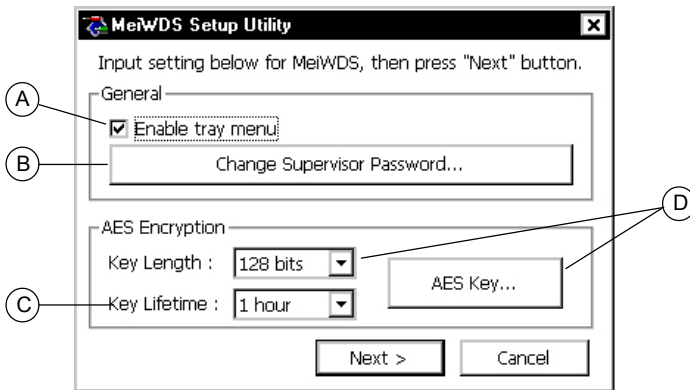


This screen is a sample.




This screen is a sample.

The default supervisor password is "supervisor", all lower case. Enter the password. Click [OK]. The following window will appear.



A To Disable the Password field on System Tray:

1. Uncheck the "Enable tray menu" box. Click [Next] - [Finish] to exit out of the "MeiWDS Setup Utility".
2. Left click on the MeiWDS  icon on the system tray.

The pop-up menu as shown on the right will appear. The "Password" selection has been disabled. The purpose of disabling the "Password" field is to prevent user from accidentally changing the password and stopping the communication to the *Wireless Display*.

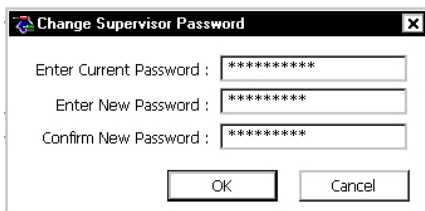


This screen is a sample.

Using the MeiWDS Setup Utility

B To change the MeiWDS Setup Utility Password:

1. The default supervisor password for the "MeiWDS Setup Utility" is "supervisor". To change the password, click the [Change Supervisor Password] button. The following window will appear.



This screen is a sample.

2. Enter the current password in the "Enter Current Password" field. Enter the new password in both of the "Enter New Password" and "Confirm New Password" fields. Click [OK] - [Next] - [Finish] to exit out of the utility.

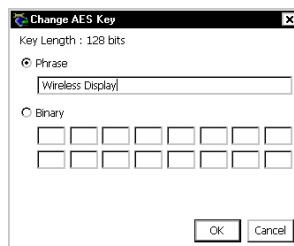
C To change the AES Encryption Key Lifetime:

1. If AES encryption is enabled in "Wireless Display Setup Utility", the AES key length and AES key will be automatically updated in the "Key Length : " and [AES Key...] fields in the "MeiWDS Setup Utility".

Use the drop-down menu to select a different key lifetime. Click [Next] - [Finish]. The default AES key lifetime is [1 hour].

D To change the AES key of the host PC side:

1. User can select [Disable], [128 bits], [192 bits] or [256 bits] AES encryption using the "Key Length : " drop-down menu.
2. Click the [AES Key...] button. the window as shown on the right will appear. Enter the AES key in this screen. Click [OK] - [OK] - [Finish].



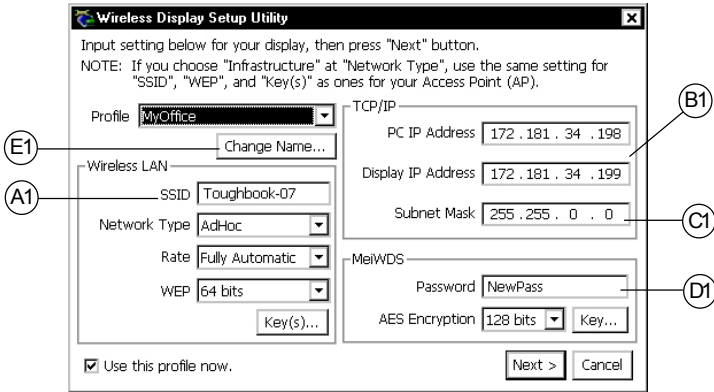
This screen is a sample.

NOTE

The *Wireless Display's* default setting is with AES encryption disabled. If the *Wireless Display* has been reset to factory default. Please select [Disable] in the "Key Length : " field at **D**.

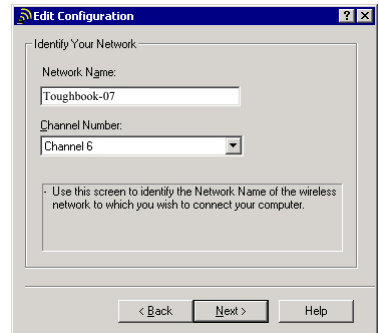
Changing Wireless Display Settings

Launch the "Wireless Display Setup Utility". The following window is displayed. Use the "Profile" drop-down menu to select the profile you want to edit.



I To change the Wireless Display's SSID:

- a1. In AdHoc mode, the default SSID of the *Wireless Display* is "cfvdw07-xxxx." To change the display's SSID, enter the new SSID at (A1), for example "Toughbook-07". Click [Next] - [OK] - [Next] - [OK] - [Finish].
- a2. Since the *SSID of the Wireless Display* has been changed, the wireless network adapter in the PC must also be updated with the new SSID. Launch the configuration utility of the network adapter. Select [Action] - [Add/Edit Configuration Profile]. Select the profile for the *Wireless Display*. Select [Edit] - [Next]. The window as shown on the right hand side is displayed. Enter the new SSID in the "Network Name" box. Go to step d1.




II To change the TCP/IP address:

- b1. The default TCP/IP addresses that are generated by the *Wireless Display* are used to setup the initial communication. Once the initial communication is established, the user can change the TCP/IP addresses of the PC and the display to suit the needs of their network environment. Enter the new TCP/IP addresses of the PC and the Display at (B1). Enter the new Subnet Mask at (C1). Click [Next] - [OK] - [Next] - [OK] - [Finish].

Changing Wireless Display Settings

- b2. The *Wireless Display's* TCP/IP address is changed to the new TCP/IP address as shown in "Display's IP address" at (B1), and it only communicates to a computer with the new TCP/IP address as shown in the "PC's IP address". The user must change the wireless network adapter's TCP/IP address to the new TCP/IP address. Please follow instructions 13 to 19 on pages 7 and 8 to change the TCP/IP address. Go to setp d1.

III To change MeiWDS System Tray Password:

- c1. Enter the new password at (D1). Click [Next] - [OK] - [Next] - [OK] - [Finish].
c2. Your new password will be automatically updated in the password field of the MeiWDS utility, , on the System Tray.

If the Wireless Display has been reset to default settings, please make sure the default password, which is "wdsp", is entered in this field.

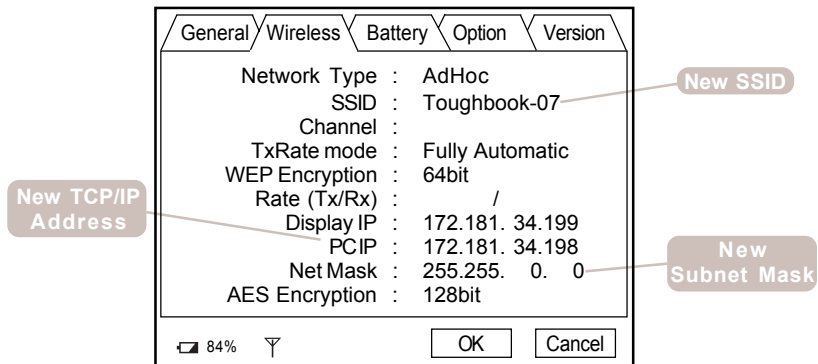
NOTE

Communication cannot be established if the password in this field does not match with your setting.



This screen is a sample.

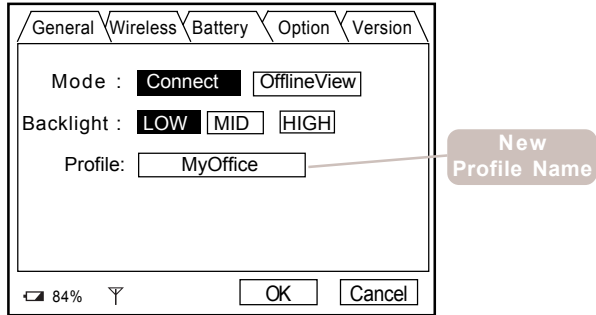
- d1. Check the *Wireless Display's* new settings. Restart the *Wireless Display*, press the MENU button on the display, then select [Wireless]. The following screen is displayed. The current settings of the *Wireless Display* are listed in this screen.



IV To change the Profile Name:

- e1. Click the [Change Name...] button at (E1). At the "Enter profile name." box, enter the new profile name, for example "MyOffice". Click [OK] to exit out of the "Change profile name" window. Click [Next] - [OK] - [Next] - [OK] - [Finish] to exit out of the "Wireless Display Setup Utility". The *Wireless Display* is now updated with the new profile name.

- e2. Check to see if the *Wireless Display's* profile name has been updated. On the *Wireless Display*, press the MENU button. The screen as shown below will be displayed. The "Profile:" name should have been updated with the new name.



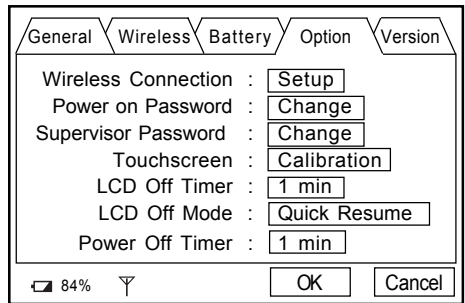
V To change Wireless Display Setup Utility's Password:

- f1. By default the "Wireless Display Setup Utility" is not set with password protection. To set a password for the "Wireless Display Setup Utility", press the MENU button on the *Wireless Display*. Select the [Option] tab using you stylus. The following screen will appear.

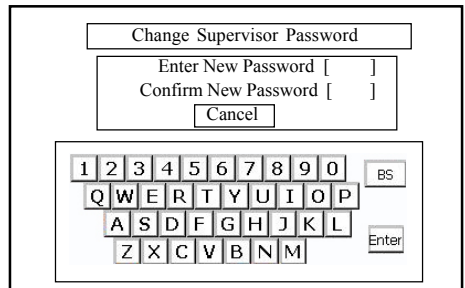


This screen is a sample.

- f2. On the "Supervisor Password :" section, hit the [Change]. The following screen will appear.



- f3. Using the on-screen keyboard, enter your new "Wireless Display Setup Utility" password.



Using the Software Keyboard

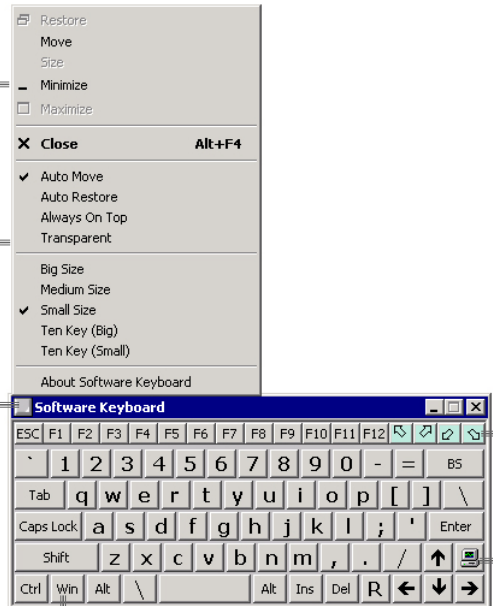
NOTE

- In order to use the Software Keyboard, the *Wireless Display* must be connected to the computer. You cannot launch Software Keyboard if the *Wireless Display* is not connected to the computer.
- The connection with the *Wireless Display* will trigger the Software Keyboard. By turning on and off the *Wireless Display*, you can launch and close the Software Keyboard.

C. Use these keys to move the keyboard to the four corners of the screen.

B. You can set the size, appearance, and how the Software Keyboard interacts with the user.

A. Click here to bring up the Software Keyboard menu.



D. This key is equivalent to the [Windows] key.

- Clicking once is equivalent to holding down the [Windows] key.
- Clicking twice is equivalent to clicking the Windows [Start] button.

E. This key equals to pressing [Ctrl] + [Alt] + [Del]. It will bring up the "Windows Task Manager".

[Auto Move]

When [Auto Move] is enabled, the keyboard will automatically move away from the area the user is typing.

[Auto Restore]

When [Auto Restore] is enabled, the keyboard will restore from "Minimize" mode when user selects a text box or launches text editing application.

[Transparent]

This will set the keyboard's appearance to transparent, similar to the picture on right hand side.




Uninstalling the Software

I Uninstalling the Software Keyboard:

1. Close the software keyboard.
2. Select [Start] - [Settings] - [Control Panel] - [Add/Remove Programs]. Select [Software Keyboard] - [Add/Remove]. Follow the on-screen instructions.
 - If [Locked File Detected] is displayed, please select [Reboot].

II Uninstalling the MeiWDS program:

3. Close the MeiWDS program by left clicking on the MeiWDS icon . Select [Exit MeiWDS].
4. Select [Start] - [Settings] - [Control Panel] - [Add/Remove Programs]. Select [MeiWDS] - [Add/Remove]. Follow the on-screen instructions.

III Uninstalling the Wireless Display Serial Port driver:

6. Windows 2000

Select [Start] - [Settings] - [Control Panel] - [System] - [Device Manager] - [Ports (COM&LPT)]. Remove [WDSP COM Port (COMx)].

7. Windows XP

Select [Start] - [Settings] - [Control Panel] - [System] - [Device Manager] - [Ports (COM&LPT)]. Remove [WDSP COM Port (COMx)].

Limitation of the Wireless Display Serial Port

- When the *Wireless Display* is not connected to the computer, the serial port of the *Wireless Display* can not be used.
- There are some serial devices and applications that will not work. This is because the serial port of the *Wireless Display* operates through a virtual serial port.
 - Devices or device drivers that start up and carry out port operation confirmation before connection establishment of the *Wireless Display*.
For example: - Serial mouse devices
 - Non-virtual port applications
For example: - MS-DOS applications
- 16-bit applications
 - A modem
 - Direct cable connection

In the above cases, the computer may freeze.

Usage Precautions

- Do not maximize the MS-DOS screen. Once maximized, the connection with the *Wireless Display* is interrupted and the screen cannot be returned to its original size. In this case, press [**Alt**] + [**Enter**] on the computer.
- If a computer establishes a connection with the *Wireless Display* while operating in a display mode other than those shown below. The display mode of the computer will automatically change to 800 x 600 (16-bit).
 - Resolution: 800 x 600 or 640 x 480
 - Color Mode: 16-bit colorIf the connection with the *Wireless Display* is cut, the computer will return to its original display mode. In this case, the colors displayed on the screen may change if the color mode is changed.
- If any changes are made to the display mode of the computer connecting to the *Wireless Display*, the connection will be cut.
- The contents displayed on the *Wireless Display* may not be the same as what was displayed on the monitor/LCD of the computer.
- Applications that use hardware-based drawing functions, etc., might not be displayed on the *Wireless Display*.
- Some applications that perform frequent screen updating (such as video playback applications) might not be shown on the *Wireless Display* or might be shown as static images.
- Some 16-bit applications may not work properly.
- The screen display may be unable to reflect a change in the cursor's shape.
- When [Always On Top] setting is released, the software keyboard does not remain on top even if the character input box is selected (except during logon and password input).
- When the LCD/external display is turned off by the [Turn off monitor] setting in [Control Panel] - [Power Management], the screen on the *Wireless Display* may remain displayed.
- Communications may be affected when there is a high load on the computer.
- The mouse cursor on the LCD of the computer may flicker when the computer is connected with the *Wireless Display*.
- When removing the wireless LAN card after starting Windows, an error may occur.

LIMITED USE LICENSE AGREEMENT

THE SOFTWARE PROGRAM(S) ("PROGRAMS") FURNISHED WITH THIS PANASONIC® PRODUCT ("PRODUCT") ARE LICENSED ONLY TO THE END-USER ("YOU"), AND MAY BE USED BY YOU ONLY IN ACCORDANCE WITH THE LICENSE TERMS DESCRIBED BELOW. YOUR USE OF THE PROGRAMS SHALL BE CONCLUSIVELY DEEMED TO CONSTITUTE YOUR ACCEPTANCE OF THE TERMS OF THIS LICENSE.

Matsushita Electric Industrial Co., Ltd. ("MEI") has developed or otherwise obtained the Programs and hereby licenses their use to you. You assume sole responsibility for the selection of the Product (including the associated Programs) to achieve your intended results, and for the installation, use and results obtained therefrom.

LICENSE

- A. MEI hereby grants you a personal, non-transferrable and non-exclusive right and license to use the Programs in accordance with the terms and conditions stated in this Agreement. You acknowledge that you are receiving only a LIMITED LICENSE TO USE the Programs and related documentation and that you shall obtain no title, ownership nor any other rights in or to the Programs and related documentation nor in or to the algorithms, concepts, designs and ideas represented by or incorporated in the Programs and related documentation, all of which title, ownership and rights shall remain with MEI or its suppliers.
- B. You may use the Programs only on the single Product which was accompanied by the Programs.
- C. You and your employees and agents are required to protect the confidentiality of the Programs. You may not distribute or otherwise make the Programs or related documentation available to any third party, by time-sharing or otherwise, without the prior written consent of MEI.
- D. You may not copy or reproduce, or permit to be copied or reproduced, the Programs or related documentation for any purpose, except that you may make one (1) copy of the Programs for backup purposes only in support of your use of the Programs on the single Product which was accompanied by the Programs. You shall not modify, or attempt to modify, the Programs.
- E. You may transfer the Programs and license them to another party only in connection with your transfer of the single Product which was accompanied by the Programs to such other party. At the time of such a transfer, you must also transfer all copies, whether in printed or machine readable form, of every Program, and the related documentation, to the same party or destroy any such copies not so transferred.
- F. You may not remove any copyright, trademark or other notice or product identification from the Programs and you must reproduce and include any such notice or product identification on any copy of any Program.

YOU MAY NOT REVERSE ASSEMBLE, REVERSE COMPILE, OR MECHANICALLY OR ELECTRONICALLY TRACE THE PROGRAMS, OR ANY COPY THEREOF, IN WHOLE OR IN PART.

YOU MAY NOT USE, COPY, MODIFY, ALTER, OR TRANSFER THE PROGRAMS OR ANY COPY THEREOF, IN WHOLE OR IN PART, EXCEPT AS EXPRESSLY PROVIDED IN THE LICENSE.

IF YOU TRANSFER POSSESSION OF ANY COPY OF ANY PROGRAM TO ANOTHER PARTY, EXCEPT AS PERMITTED IN PARAGRAPH E ABOVE, YOUR LICENSE IS AUTOMATICALLY TERMINATED.

TERM

This license is effective only for so long as you own or lease the Product, unless earlier terminated. You may terminate this license at any time by destroying, at your expense, the Programs and related documentation together with all copies thereof in any form. This license will also terminate effective immediately upon occurrence of the conditions therefore set forth elsewhere in this Agreement, or if you fail to comply with any term or condition contained herein. Upon any such termination, you agree to destroy, at your expense, the Programs and related documentation together with all copies thereof in any form.

YOU ACKNOWLEDGE THAT YOU HAVE READ THIS AGREEMENT, UNDERSTAND IT AND AGREE TO BE BOUND BY ITS TERMS AND CONDITIONS. YOU FURTHER AGREE THAT IT IS THE COMPLETE AND EXCLUSIVE STATEMENT OF THE AGREEMENT BETWEEN US, WHICH SUPERSEDES ANY PROPOSAL OR PRIOR AGREEMENT, ORAL OR WRITTEN, AND ANY OTHER COMMUNICATIONS BETWEEN US, RELATING TO THE SUBJECT MATTER OF THIS AGREEMENT.

Panasonic[®]

TOUGHBOOK[™]

TAKE IT.

Matsushita Electric Industrial Co., LTD. All Rights Reserved.



Free Manuals Download Website

<http://myh66.com>

<http://usermanuals.us>

<http://www.somanuals.com>

<http://www.4manuals.cc>

<http://www.manual-lib.com>

<http://www.404manual.com>

<http://www.luxmanual.com>

<http://aubethermostatmanual.com>

Golf course search by state

<http://golfingnear.com>

Email search by domain

<http://emailbydomain.com>

Auto manuals search

<http://auto.somanuals.com>

TV manuals search

<http://tv.somanuals.com>