

Smart-DTA™

# ISDN VoIP Telephone Adapter

## Quick Start Guide



**Important** — This is a Class A device and is intended for use in a light industrial environment. It is not intended nor approved for use in an industrial or residential environment.

**Caution** — This device is not intended nor approved for connection to the public ISDN telecommunication network.

**Attention** — Ce dispositif n'est pas prévu ni approuvé pour le raccordement au réseau de télécommunication public le RNIS.

**Vorsicht** — Dieses Gerät ist nicht für Anschaltung an das öffentlich ISDN Telekommunikationsnetz genehmigt.

**Precaución** — Este dispositivo no está previsto ni se ha aprobado para la conexión a la red de telecomunicaciones pública ISDN.

**Attenzione** — Questo dispositivo non è inteso né non approvato per collegamento alla rete di telecomunicazione pubblica ISDN.



WARNING

- The Smart-DTA contains no user serviceable parts. The equipment shall be returned to Patton Electronics for repairs, or repaired by qualified service personnel.
- **Mains Voltage:** Do not open the case the power cord is attached. The external power adaptor shall be a listed limited power source that incorporates a disconnect device and shall be positioned within easy reach of the operator. The mains outlet shall be within 10 feet (3 meters) of the device, shall be easily accessible, and protected by a circuit breaker.
- The Smart-DTA is not shipped with power cables. For AC powered units, ensure that the power cable used meets all applicable standards for the country in which it is to be installed, and that it is connected to a wall outlet which has earth ground.
- Hazardous network voltages are present in WAN ports regardless of whether power to the Smart-DTA is ON or OFF. To avoid electric shock, use caution when near WAN ports. When detaching the cables, detach the end away from the Smart-DTA first.
- Do not work on the system or connect or disconnect cables during periods of lightning activity.

---

## 1.0 Power up the Smart-DTA

---



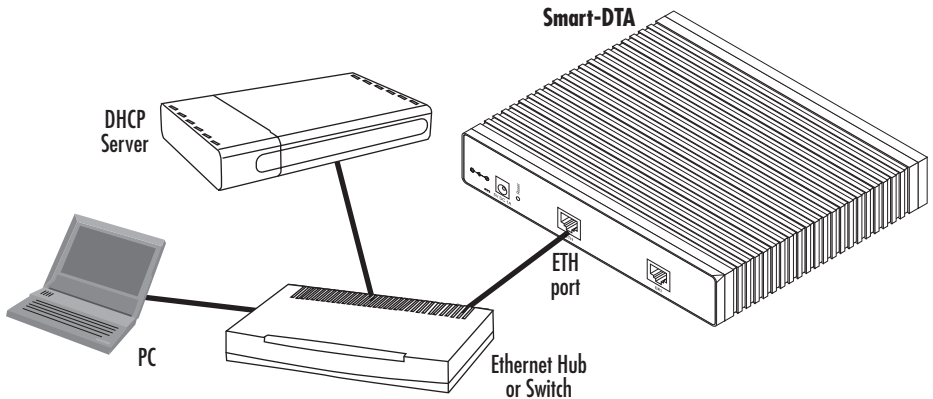
CAUTION

The terminal block header to which the wires are secured provides the disconnect for the Smart-DTA. Take proper measures to ensure that it is not permanently fastened to the receptacle mounted on the chassis.

1. Connect the Smart-DTA to a power source using the included power supply and cable.
2. When the *Power* LED stops blinking and remains lit, the Smart-DTA is ready to configure.

## 2.0 Connect the Smart-DTA to your local network

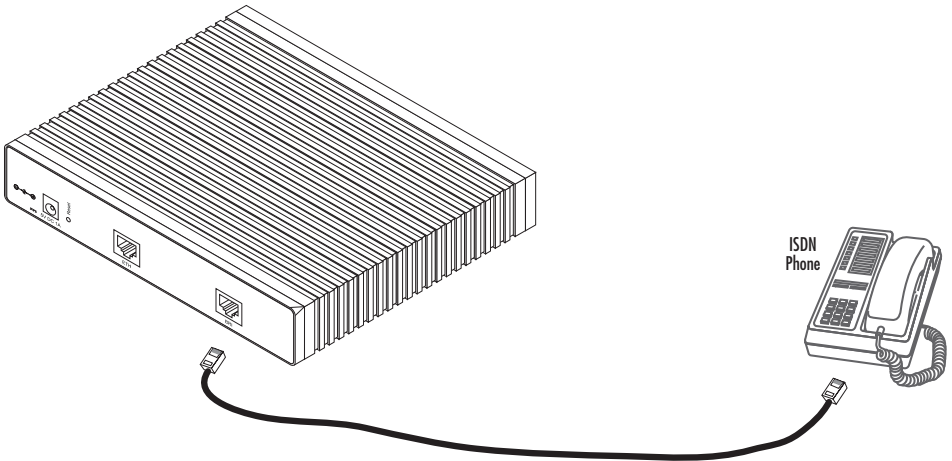
You must connect the Smart-DTA to an IP network that provides a DHCP server. Using the included black Ethernet cable, connect the Smart-DTA RJ-45 Ethernet WAN port, labeled *ETH* (see figure 1), to an Ethernet hub or switch on the same network as your PC. The Ethernet WAN interface is configured as a DHCP client.



**Figure 1.** Connecting the Smart-DTA to the network via a hub or switch

### 3.0 Connect the Smart-DTA to an ISDN phone

1. Using a straight-through cable, terminated with RJ-45 connectors, connect the BRI port of your Smart-DTA to the S/T port of your ISDN phone, as shown below:



RJ-45, male

3  
4  
5  
6

RJ-45, male

3  
4  
5  
6

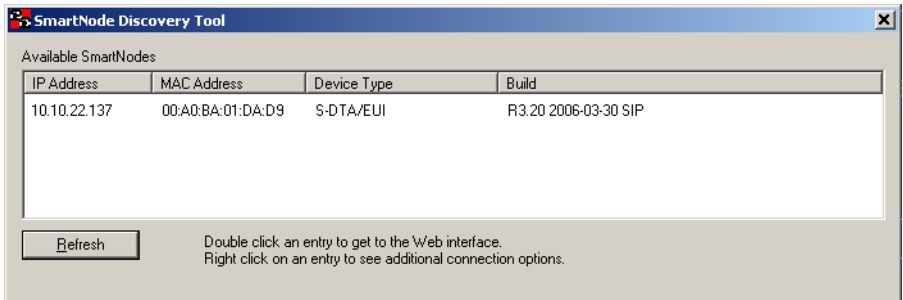
**Note:** Other pins are not used.

---

## 4.0 Start the SmartNode Discovery Tool

---

1. Insert the CD included with your Smart-DTA into the CD drive on your PC.
2. Copy the file named *SNDiscovery.exe* from the CD to your PC.



3. At your PC, double-click the *SNDiscovery.exe* file name to activate the tool. The SmartNode Discovery Tool window will display the IP Address, MAC Address, Device Type (model number) and Build (software release) of your Smart-DTA.

If your Smart-DTA does not appear:

- Make sure the Smart-DTA and your PC are on the same routed subnet
- Make sure any firewall programs on your PC are disabled

---

## 5.0 Access the Web Browser (GUI) Interface

---

1. In the SmartNode Discovery Tool window, select the line that displays the IP address of your Smart-DTA.

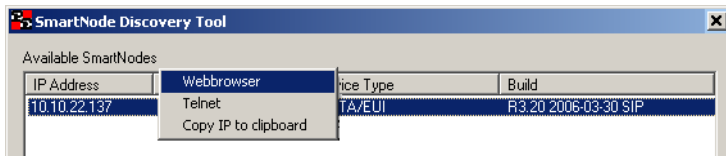


Figure 2. SmartNode Discovery Tool window

2. Right-click the selected line, and select *Webbrowser*. The Login window will display.

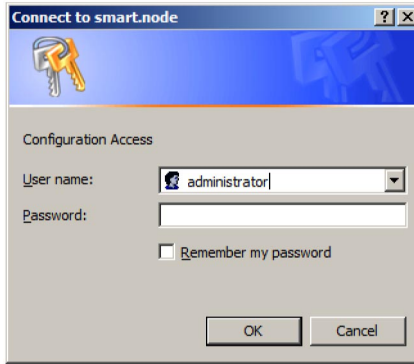


Figure 3. Login window

3. Enter the username *administrator*. Do not enter a password. Instead simply click OK. Your web browser will display the Smart-DTA home page.

SmartNode	
<b>Model</b>	S-DTA/EUI
<b>Serial Number</b>	00A0BA01DAD9
<b>Hardware Version</b>	2.1
<b>Software Version</b>	R3.20 2006-03-30 SIP
<b>System Time</b>	Thu, 01 Jan 1970 19:34:54 GMT The system is up for 0 days, 19 hours, 34 minutes, 54 seconds

Figure 4. Smart-DTA home page

---

## 6.0 Configuring your Smart-DTA

---

Once you have logged in you can use the browser-based graphical user interface (GUI) to configure and manage your S-DTA. The Smart-DTA home page displays three *Immediate Actions* buttons that allow you to store the current configuration state, reload the device, and restore to factory defaults. The home page also displays certain basic system information. You can always return to the home page by clicking *Home* in the navigation bar.

The GUI consists of the following main elements:

- The “Navigation Bar” on the left edge presents you with a menu listing giving access to the various configuration and status pages of the Smart-DTA.
- At the top of the page you see the “Current System Path” which displays the location and element currently presented in the main area.
- The rest of the page displays the configuration and status information for the different features of the Smart-DTA.



Whenever you modify the configuration your Smart-DTA, immediately applies your changes. However, your new settings ARE NOT PERMANENTLY SAVED (in non-volatile memory [RAM]). To survive power failure or manual reload you must store your new settings in non-volatile memory. To save your changes: return to the home page and press the Save Current Configuration button.

---

## 7.0 Additional Information

---

Refer to the *Smart-DTA Getting Started Guide* located on the CD-ROM shipped with your Smart-DTA device and available online at [www.patton.com/manuals](http://www.patton.com/manuals). For detailed information about:

- Installing, configuring, operating, and troubleshooting.
- Warranty, trademark & compliance

The CD-ROM also includes many freeware and shareware tools, including TFTP servers, and Telnet clients.

---

## A.0 Customer and Technical Support

---

Toll-Free VoIP support: call [sip:support@patton.com](tel:sip:support@patton.com) with a VoIP SIP client

Online support: [www.patton.com](http://www.patton.com)

E-mail support: [support@patton.com](mailto:support@patton.com) — answered within 1 business day

Telephone support:

- Standard: +1 (301) 975-1007 (USA), Monday–Friday: 8:00 am to 5:00 pm EST (1300 to 2200 UTC/GMT)
- Alternate: +41 (0)31 985 25 55 (Switzerland), Monday–Friday: 8:00 am to 5:00 pm CET (0900 to 1800 UTC/GMT)

Fax: +1 (253) 663-5693 (USA) or +41 (0)31 985 25 26 (Switzerland)

---

## B.0 Appendix—Factory default IP addresses

---

Factory default IP addresses and netmask configuration.

	IP Address	Network mask
WAN interface Ethernet 0 (0/0)	DHCP Client	n/a
LAN interface Ethernet 1 (0/1)	192.168.1.1	255.255.255.0
DHCP server address range (LAN)	192.168.1.10-192.168.1.99	255.255.255.0

---

## C.0 Compliance Information

---

### C.1 Compliance

---

EMC Compliance:

- FCC Part 15, Class A
- EN55022, Class A
- EN55024

Safety Compliance:

- IEC 60950-1
- EN60950-1

### C.2 Radio and TV interference

---

The Smart-DTA router generates and uses radio frequency energy, and if not installed and used properly—that is, in strict accordance with the manufacturer's instructions—may cause interference to radio and television reception. The Smart-DTA router have been tested and found to comply with the limits for a Class B computing device in accordance with specifications in Subpart B of Part 15 of FCC rules, which are designed to provide reasonable protection from such interference in a commercial installation. However, there is no guarantee that interference will not occur in a particular installation. If the Smart-DTA router does cause interference to radio or television reception, which can be determined by disconnecting the unit, the user is encouraged to try to correct the interference by one or more of the following measures: moving the computing equipment away from the receiver, re-orienting the receiving antenna and/or plugging the receiving equipment into a different AC outlet (such that the computing equipment and receiver are on different branches).



### C.3 EC Declaration of Conformity

---

(See section C.4 “EG-Konformitätserklärung” for German version.)

**Product Description:** Smart-DTA

The products described above in the form as delivered are in conformity with the provisions of the following European Directive:

**R&TTE Directive 1999/5/EC**

Guidelines of the European Parliament and the Committee for the Harmonization of the Legal Regulations of the Member States concerning radio equipment and telecommunications terminal equipment and the mutual recognition of their conformity.



The safety advice in the documentation accompanying the products shall be obeyed.  
The conformity to the above directive is indicated by the CE sign on the device.

The signed Declaration of Conformity can be downloaded from [www.patton.com/certifications/](http://www.patton.com/certifications/).

### C.4 EG-Konformitätserklärung

---

(see section C.3 “EC Declaration of Conformity” for English version)

**Produktbezeichnung:** Smart-DTA

Die bezeichneten Produkte stimmen in der von uns in Verkehr gebrachten Ausführung mit den Vorschriften folgender Richtlinie überein:

**R&TTE 1999/5/EG**

Richtlinie des europäischen Parlaments und des Rates zur Angleichung der Rechtsvorschriften der Mitgliedstaaten über Funkanlagen und Telekommunikations-Einrichtungen und die gegenseitige Anerkennung ihrer Konformität.



Die Sicherheitshinweise in der mitgelieferten Produktdokumentation sind zu beachten.  
Die Konformität mit der oben erwähnten Richtlinie wird durch das CE-Zeichen auf dem Gerät bestätigt.

Die unterzeichnete Konformitätserklärung kann heruntergeladen werden von: [www.patton.com/certifications/](http://www.patton.com/certifications/).

### C.5 Authorized European Representative

---

D R M Green, European Compliance Services Limited.

Oakdene House, Oak Road , Watchfield, Swindon, Wilts SN6 8TD, UK





## Copyright statement

Copyright © 2007, Patton Electronics Company. All rights reserved.

The information in this document is subject to change without notice. Patton Electronics assumes no liability for errors that may appear in this document.

## Trademarks statement

The term *Smart-DTA* is a trademark of Patton Electronics Company. All other trademarks presented in this document are the property of their respective owners.

## Warranty

For warranty information, refer to the *Smart-DTA Getting Started Guide* located on the CD-ROM that came with your IAD or available online at [www.patton.com](http://www.patton.com).



In accordance with the requirements of council directive 2002/96/EC on Waste of Electrical and Electronic Equipment (WEEE), ensure that at end-of-life you separate this product from other waste and scrap and deliver to the WEEE collection system in your country for recycling.

## Free Manuals Download Website

<http://myh66.com>

<http://usermanuals.us>

<http://www.somanuals.com>

<http://www.4manuals.cc>

<http://www.manual-lib.com>

<http://www.404manual.com>

<http://www.luxmanual.com>

<http://aubethermostatmanual.com>

Golf course search by state

<http://golfingnear.com>

Email search by domain

<http://emailbydomain.com>

Auto manuals search

<http://auto.somanuals.com>

TV manuals search

<http://tv.somanuals.com>