



C3611M (12/07) EDI5000-AD2088 Data Interface Quick Start Guide

CONNECT THE EDI5000-AD2088 TO AN AD MATRIX SYSTEM

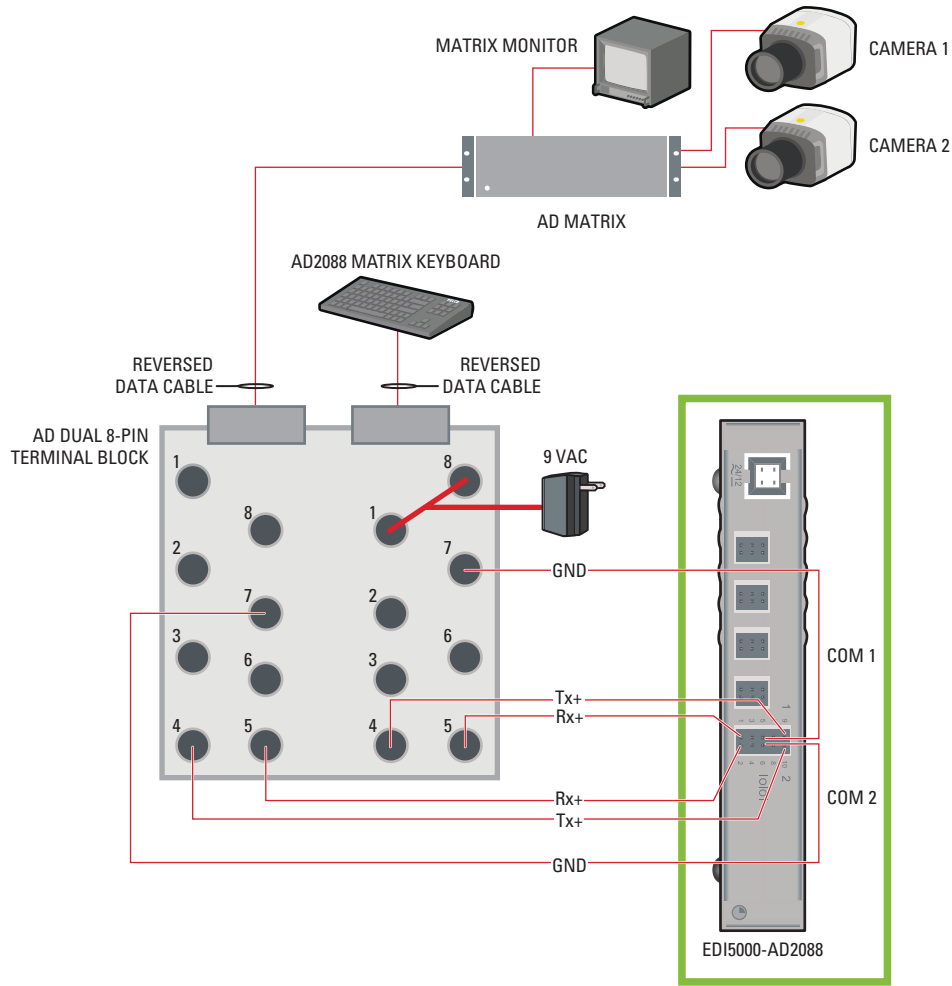


Figure 1. Connect the EDI5000 to the AD Matrix System

Table A. EDI5000 and AD2088 RS-232 Pin Assignments

Pin Assignment	AD2088 Keyboard	EDI5000 COM 1
RS-232 Data Rx+	PIN 5	PIN 1
Ground	PIN 7	PIN 5
RS-232 Data Tx+	PIN 4	PIN 9
Pin Assignment	AD Matrix	EDI5000 COM 2
RS-232 Data Rx+	PIN 5	PIN 2
Ground	PIN 7	PIN 6
RS-232 Data Tx+	PIN 4	PIN 10

NOTE: The alarm and relay inputs on the data interface are reserved for future use, and are not included in this table.

CONFIGURE THE EDI5000-AD2088

1. From the Endura® workstation (or from any other computer connected to the Endura network) open a Web browser window. The EDI5000 system configuration software is compatible with the following Web browsers:
 - Microsoft® Internet Explorer® version 6.0 or higher
 - Mozilla® Firefox® version 2.0 or higher
2. Type the IP address of the EDI5000 data interface unit in the Web browser address. The default IP address is 192.168.0.1.

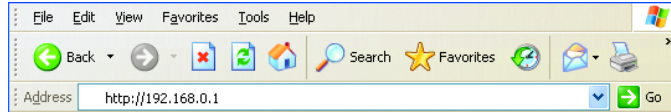


Figure 2. EDI5000 Default IP Address

3. Press Enter. The EDI5000 system configuration software Login dialog box opens.

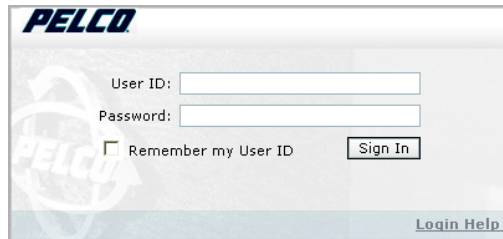


Figure 3. EDI5000 Login Dialog Box

4. Type the administrator user ID (**admin**) and password (**admin**), and then click Sign In. The user ID and password are case sensitive.
5. Configure the serial port connection settings as shown in Figure 4.

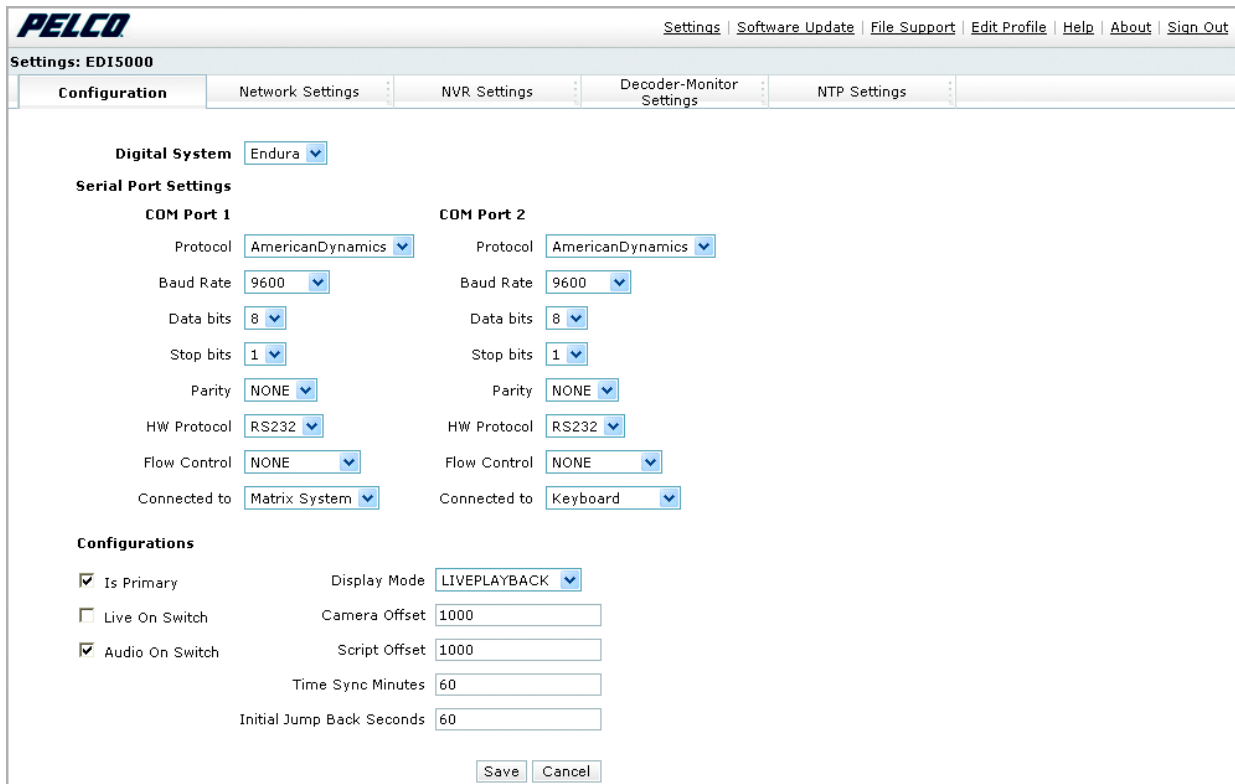


Figure 4. The EDI5000 System Configuration Software

OPERATE THE EDI5000-AD2088

When an operator is viewing live video from the matrix system, the keyboard commands and options are controlled by the matrix system, and they function as described in the matrix system documentation.

When an operator is viewing either live video from an Endura system camera or recorded video, the keyboard commands and options are controlled by the EDI5000 data interface, and they function as described in this section.

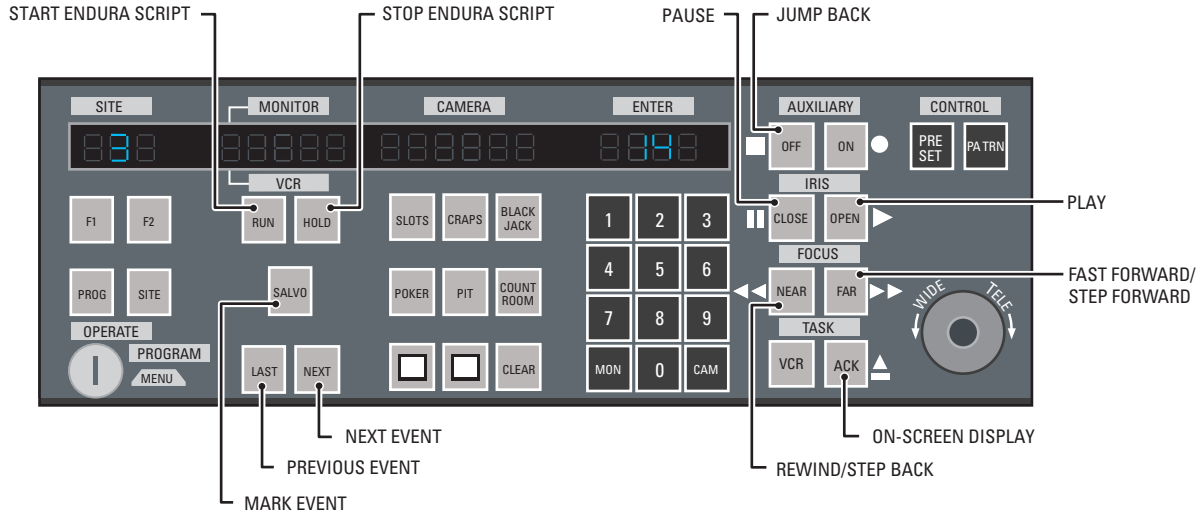


Figure 5. Operating the EDI5000 with the AD2088 Keyboard

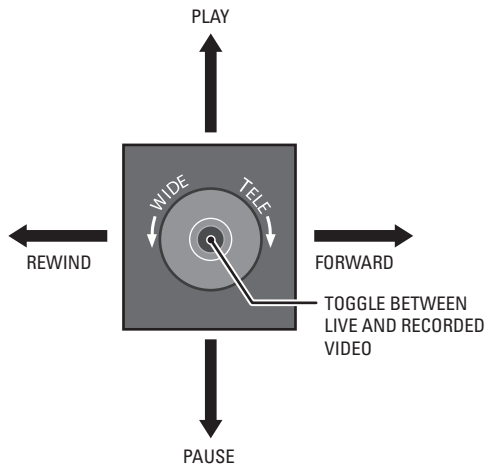


Figure 6. Controlling Recorded Video with the Joystick

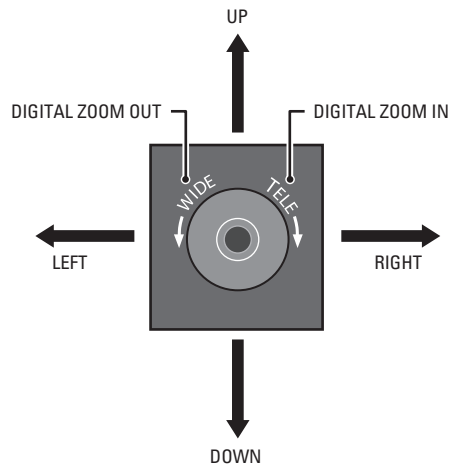


Figure 7. Using Digital Zoom to Control Recorded Video



Worldwide Headquarters
3500 Pelco Way
Clovis, California 93612 USA


USA & Canada
Tel: 800/289-9100
Fax: 800/289-9150

International
Tel: 1-559/292-1981
Fax: 1-559/348-1120

www.pelco.com

ISO9001

Australia | Canada | Finland | France | Germany | Italy | Macau | The Netherlands | Russia | Singapore
South Africa | Spain | Sweden | United Arab Emirates | United Kingdom | United States

 The materials used in the manufacture of this document and its components are compliant to the requirements of Directive 2002/95/EC.

Pelco, the Pelco logo, Endura, and the Endura logo are registered trademarks of Pelco.
Microsoft and Internet Explorer are registered trademarks of Microsoft Corporation.
Mozilla and Firefox are registered trademarks of the Mozilla Foundation.

© Copyright 2007, Pelco. All rights reserved.

Free Manuals Download Website

<http://myh66.com>

<http://usermanuals.us>

<http://www.somanuals.com>

<http://www.4manuals.cc>

<http://www.manual-lib.com>

<http://www.404manual.com>

<http://www.luxmanual.com>

<http://aubethermostatmanual.com>

Golf course search by state

<http://golfingnear.com>

Email search by domain

<http://emailbydomain.com>

Auto manuals search

<http://auto.somanuals.com>

TV manuals search

<http://tv.somanuals.com>