



IPS-CABLE



C2458M-E (10/06)

Contents

Description	4
Getting Started	4
Software Upload Files (Spectra and ExSite Systems)	5
Windows-Based PC Installation and Operation	6
Install the Control Utility for Windows	6
Install the Cable	6
How to Control a System Using a Windows-Based PC	8
PTZ Control Menu	8
How to Upload Software Using a PC (Spectra and ExSite Systems)	9
Palm Handheld Installation and Operation	10
Install the Control Utility for a Palm OS-Compatible Handheld	10
Install the Cable	10
How to Control a System Using a Palm OS-Compatible Handheld	12
PTZ Control Menu	13
How to Upload Software Using a Palm OS-Compatible Handheld (Spectra and ExSite Systems)	14
iPAQ Pocket PC Installation and Operation	16
Install the Control Utility for Windows	16
Install the Cable	16
How to Control a System Using a Pocket PC	18
PTZ Control Menu	19
How to Upload Software Using A Pocket PC (Spectra and ExSite Systems)	20

List of Illustrations

1	Cable Installation for a Windows-Based PC	7
2	Cable Installation for a Palm OS-Compatible Handheld	11
3	Cable Installation for a Pocket PC	17

Description

The IPS-CABLE provides the serial interface between an IPS-RDPE-2 remote data port or Spectra® dome system and a Windows®-based PC, Palm OS®-compatible handheld, or iPAQ pocket PC. The interface cable transmits data for local viewing, programming, and pan/tilt/zoom control of a Spectra, Esprit®, or ExSite™ system. The cable can also upload revised operating software and language files to a Spectra or an ExSite system.

NOTE: The IPS-CABLE is compatible with Spectra III™ Series and newer model systems. Spectra II™ and previous dome systems do not support this product.

The following is supplied with the IPS-CABLE:

1 IPS-CABLE interface cable

1 Resource CD

NOTE: The serial interface connectors and matching connections for the PC, Palm OS-compatible handheld, and iPAQ pocket PC are not supplied with the IPS-CABLE.

GETTING STARTED

This manual is divided into the following sections:

- Windows-Based PC Installation and Operation
- Palm OS-Compatible Handheld Installation and Operation
- iPAQ Pocket PC Installation and Operation

Refer to the correct section to control or upload software using the IPS-CABLE and your selected device.

SOFTWARE UPLOAD FILES (SPECTRA AND EXSITE SYSTEMS)

Upload software has a three-digit filename that identifies the software version.

Example: Filename 120 is system software version 1.20.

For Spectra III and ExSite systems, language files have a four-digit filename that identify file type and version. Standard language files (English, Spanish, Portugese, Italian, French, and German) start with the number 2. Alternate language files begin with the number 3 or higher.

Example: 2300 is the standard language file version 3.00.

For the latest version of upload software, see Software Downloads at www.pelco.com.



WARNING: To upload software using the IPS-RDPE-2 remote data port, the following system software must be installed:

- Spectra III dome drive must have software version 1.2 or higher installed.
- ExSite explosionproof system must have software version 1.13 or higher installed.

Software cannot be uploaded to an Esprit system.

Windows-Based PC Installation and Operation

To interface with a Spectra dome drive or IPS-RDPE-2 remote data port using a Windows-based PC, first install the control/upload utility and then install the IPS-CABLE.

The control/upload utility is compatible with the following operating systems:

Windows® 95
Windows 98
Windows ME
Windows 2000
Windows XP
Windows NT® with service pack 6

NOTE: Know how to operate a Windows-based PC before attempting to control or upload software using the interface cable (IPS-CABLE).

INSTALL THE CONTROL UTILITY FOR WINDOWS

1. Insert the Resource CD into the CD drive. The main menu appears on the monitor.

NOTE: If autoplay is not enabled on your system, you need to navigate to the CD drive and select Start to open the main menu.

2. Click the Control/Upload Utility button for Spectra, Esprit, or ExSite. The Install Shield Wizard starts.
3. Follow the instructions displayed on the monitor.

INSTALL THE CABLE

To install the IPS-cable, refer to Figure 1 and do the following:

1. Connect a null modem cable (not supplied) to the COM1 or COM2 serial port on the PC.
2. Connect the 9-pin male connector from the IPS-CABLE to the null modem cable.
3. Connect the IPS-CABLE to the RJ-45 port of the Spectra dome drive or IPS-RDPE-2.

NOTE: When connected, the IPS-CABLE will interrupt control from the normal control source.

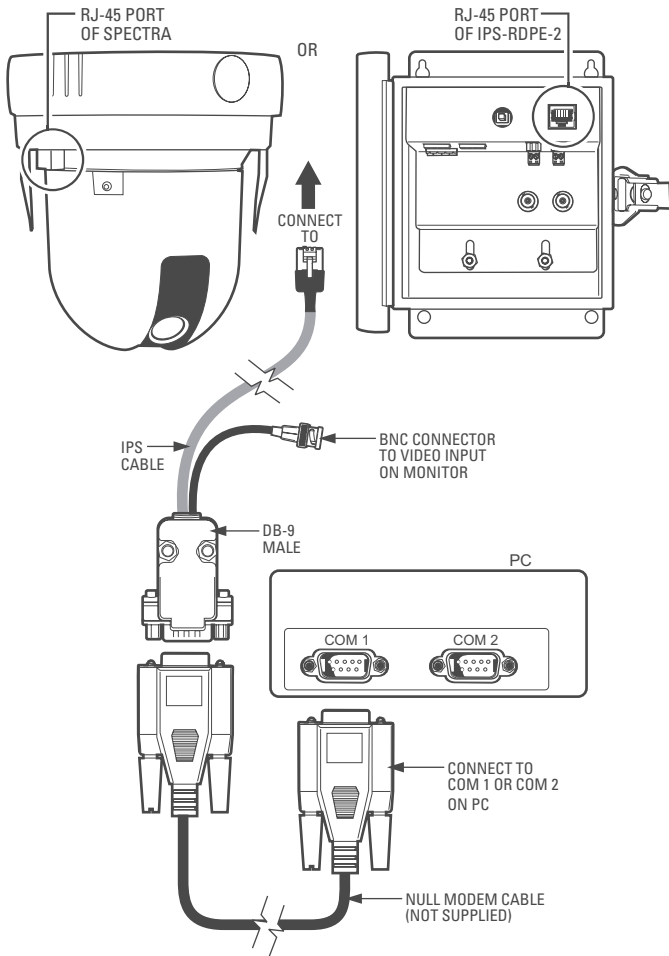


Figure 1. Cable Installation for a Windows-Based PC

HOW TO CONTROL A SYSTEM USING A WINDOWS-BASED PC

1. Click the application icon located on the PC desktop.
2. Select the protocol for the unit and then enter the unit address.
3. Select the port: COM1 or COM2.
4. Click the PTZ button.

PTZ CONTROL MENU



Iris Open: Tap the Open button to make a selection.



Iris Close: Tap the Close button to cancel a selection.



Focus Near: Tap the Near button to focus near.



Focus Far: Tap the Far button to focus far.



Zoom In: Tap the In button to zoom near.



Zoom Out: Tap the Out button to zoom far.



Preset 95: Tap the PGM button to access the programming menu for the system. Refer to the operation and programming manual supplied with the Spectra, Esprit, or ExSite system.

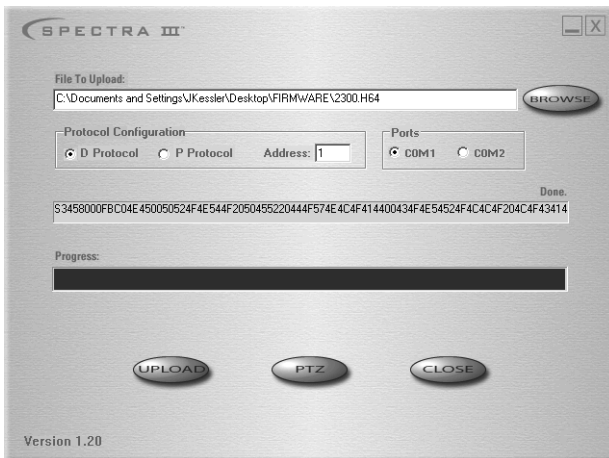
HOW TO UPLOAD SOFTWARE USING A PC (SPECTRA AND EXSITE SYSTEMS)

WARNING: To upload software using the IPS-RDPE-2 remote data port, the following system software must be installed:

- Spectra III dome drive must have software version 1.2 or higher installed.
- ExSite explosionproof system must have software version 1.13 or higher installed.

Software cannot be uploaded to an Esprit system.

1. Click the application icon located on the PC desktop.
2. Insert the Resource CD into the CD drive. Click the Browse button. Select the CD drive and the software file. Select the protocol for the system, system address, and port (COM1 or COM2). Click the Upload button.



3. Wait until "Done" appears on the screen before unplugging the interface cable (IPS-CABLE).

WARNING: To prevent damage to the system, never cycle power or attempt control of the system during the upload process. The upload process is not complete until the system reboots and the "Configure Done" message appears on the monitor.

Palm Handheld Installation and Operation

To interface with a Spectra dome drive or IPS-RDPE-2 remote data port using a Palm handheld, first install the Control/Upload Utility and then install the IPS-CABLE.

The Control/Upload Utility is compatible with Palm OS version 3.5 or higher.

NOTE: Know how to operate a Palm OS-compatible handheld before attempting to control or upload software using the IPS-CABLE.

INSTALL THE CONTROL UTILITY FOR A PALM OS-COMPATIBLE HANDHELD

1. Insert the Resource CD into the CD drive. The main menu appears on the monitor.

NOTE: If autoplay is not enabled on your system, you need to navigate to the CD drive and select Start to open the main menu.

2. Click the Control/Upload Utility button for Spectra, Esprit, or ExSite. The File Download box appears on the monitor. Open or save the Control/Upload Utility file to the PC.
3. Use the HotSync[®] function to install the application software onto the Palm OS-compatible handheld. Refer to the manual supplied with the Palm OS-compatible handheld for instructions on how to perform a HotSync operation.

INSTALL THE CABLE

To install the IPS-CABLE, refer to Figure 2 and do the following:

1. Connect a Palm OS-compatible serial cable (not supplied) to the handheld serial port.
2. Connect the 9-pin male connector from the IPS-CABLE to the Palm OS compatible serial cable.
3. Connect the IPS-CABLE to the RJ-45 port of the Spectra dome drive or IPS-RDPE-2.

NOTE: When connected, the IPS-CABLE will interrupt control from the normal control source.

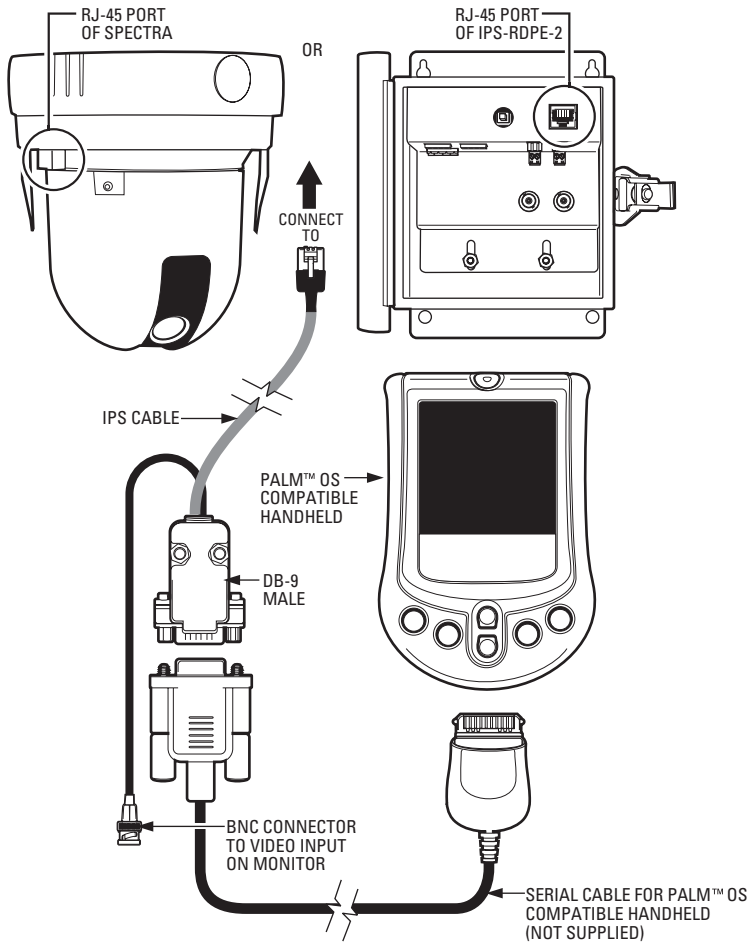


Figure 2. Cable Installation for a Palm OS-Compatible Handheld

HOW TO CONTROL A SYSTEM USING A PALM OS-COMPATIBLE HANDHELD

1. Tap the Launcher/Home icon. The main menu appears. Tap the application icon.



2. Select the control protocol of your system, and then enter the address of the system.

NOTE: The handheld will not operate systems using P protocol address 1. Change the P address to 2 or higher. If you normally use Coaxitron®, you may need to assign the system a D protocol address to use the RJ-45 cable.



3. Tap the PTZ button.

PTZ CONTROL MENU

Iris Open: Tap the Open button to make a selection.

Iris Close: Tap the Close button to cancel a selection.

Focus Near: Tap the Near button to focus near.

Focus Far: Tap the Far button to focus far.


Zoom In: Tap the In button to zoom near.

Zoom Out: Tap the Out button to zoom far.

Preset 95: Tap the PGM button to access the programming menu for the system. Refer to the operation and programming manual supplied with the Spectra, Esprit, or ExSite system.



HOW TO UPLOAD SOFTWARE USING A PALM OS-COMPATIBLE HANDHELD (SPECTRA AND EXSITE SYSTEMS)

 **WARNING:** To upload software using the IPS-RDPE-2 remote data port, the following system software must be installed:

- Spectra III dome drive must have software version 1.2 or higher installed.
- ExSite explosionproof system must have software version 1.13 or higher installed.

Software cannot be uploaded to an Esprit system.

1. Prepare the handheld:
 - a. Insert the Resource CD into the CD drive of a Windows-based PC. Browse the CD to locate the software files for the Palm OS-compatible handheld. Copy the files to the PC.
 - b. Use the HotSync® function to install the software files onto the Palm OS-compatible handheld. Refer to the manual supplied with the Palm OS-compatible handheld for instructions on how to perform a HotSync operation.
2. Launch the application software located on the handheld by tapping the application icon.



3. Enter the software file name and then tap the Upload button. The software upload starts.



4. Wait until "Done" appears on the screen before unplugging the interface cable (IPS-CABLE).



WARNING: Do not cycle power to the system during the upload process. The "Done" message on the handheld indicates only that the first part of the upload is done. The upload process is not complete until the system reboots and the "Configure Done" message appears on the monitor.

iPAQ Pocket PC Installation and Operation

To interface with a Spectra dome drive or IPS-RDPE-2 remote data port using a iPAQ Pocket PC, first install the Control/Upload Utility and then install the IPS-CABLE.

The Control/Upload Utility is compatible with the following:

iPAQ Pocket PC 3100 series through 3800 series with Windows CE 3.0 for PocketPC or PocketPC 2002

Devices other than iPAQ that use Windows CE 3.0 for PocketPC or PocketPC 2002 should be compatible.

NOTE: Know how to operate an iPAQ pocket PC before attempting to control or upload software using the IPS-CABLE.

INSTALL THE CONTROL UTILITY FOR WINDOWS

1. Insert the Resource CD into the CD drive. The main menu appears on the monitor.
2. Connect the iPAQ to the PC.
3. Click the Install Control/Upload Utility button. The Install Shield Wizard starts. Follow the instructions displayed on the monitor.

INSTALL THE CABLE

To install the IPS-CABLE, refer to Figure 3 and do the following:

1. Connect a null modem cable (not supplied) to the serial port on the Pocket PC.
2. Connect the 9-pin male connector from the IPS-CABLE to the null modem cable.
3. Connect the IPS-CABLE to the RJ-45 port of the Spectra dome drive or IPS-RDPE-2.

NOTE: When connected, the IPS-CABLE will interrupt control from the normal control source.

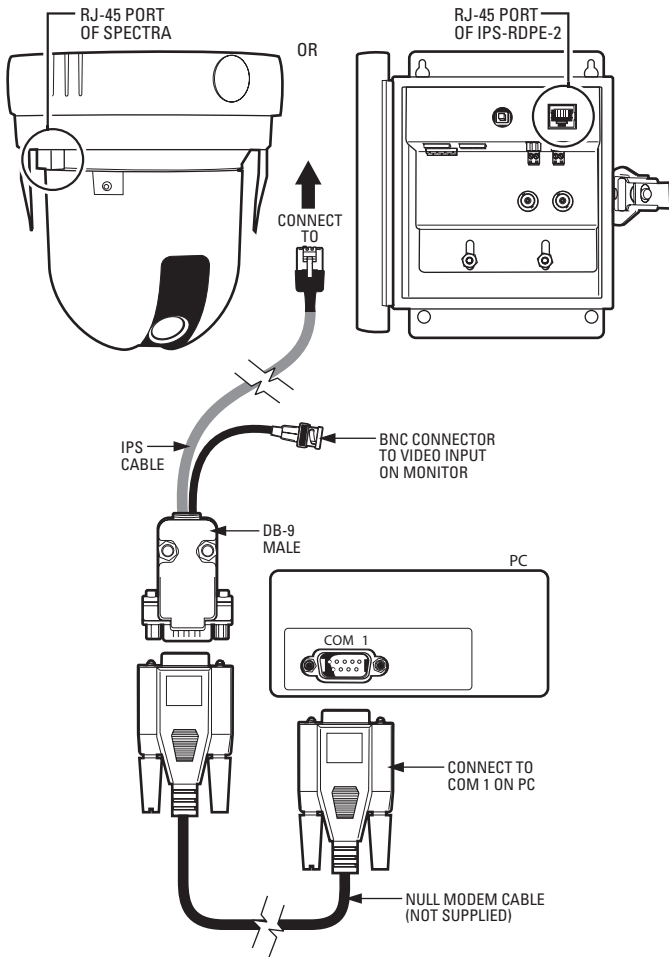


Figure 3. Cable Installation for a Pocket PC

HOW TO CONTROL A SYSTEM USING A POCKET PC

1. Click the Application icon located on the Pocket PC.



2. Select the protocol for the Spectra, Esprit, or ExSite, enter the system address, and then click the PTZ button.



3. You can now program/control the system.



PTZ CONTROL MENU



Iris Open: Tap the Open button to make a selection.



Iris Close: Tap the Close button to cancel a selection.



Focus Near: Tap the Near button to focus near.



Focus Far: Tap the Far button to focus far.



Zoom In: Tap the In button to zoom near.




Zoom Out: Tap the Out button to zoom far.



Preset 95: Tap the PGM button to access the programming menu for the system. Refer to the operation and programming manual supplied with the Spectra, Esprit, or ExSite system.

HOW TO UPLOAD SOFTWARE USING A POCKET PC (SPECTRA AND EXSITE SYSTEMS)

 **WARNING:** To upload software using the IPS-RDPE-2 remote data port, the following system software must be installed:

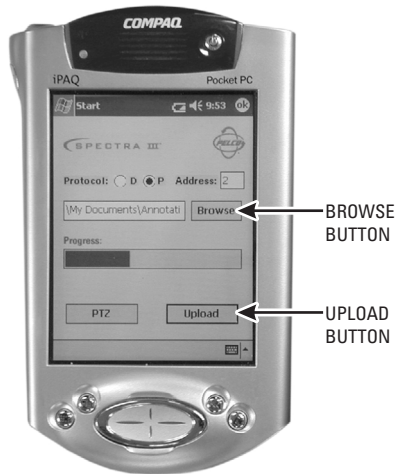
- Spectra III dome drive must have software version 1.2 or higher installed.
- ExSite explosionproof system must have software version 1.13 or higher installed.


Software cannot be uploaded to an Esprit system.

1. Prepare the Pocket PC:
 - a. Insert the Resource CD into the CD drive of a Windows-based PC. Browse the CD to locate the software files for the pocket PC. Copy the files to the Windows-based PC.
 - b. Use the ActiveSync® function to install the software files onto the Pocket PC. Refer to the manual supplied with the Pocket PC for instructions on how to perform an ActiveSync operation.
2. Launch the application software located on the Pocket PC by tapping the application icon.



3. Click the Browse button. Select the software file to upload. Tap the Upload button. The software upload starts. Wait until "Done" appears on the screen before unplugging the interface cable (IPS-CABLE).



 **WARNING:** Do not cycle power to the system during the upload process. The upload process is not complete until the system reboots and the "Configure Done" message appears on the monitor.

PRODUCT WARRANTY AND RETURN INFORMATION

WARRANTY

Pelco will repair or replace, without charge, any merchandise proved defective in material or workmanship **for a period of one year** after the date of shipment.

Exceptions to this warranty are as noted below:

- Five years on FT/FR8000 Series fiber optic products.
 - Three years on Genex® Series products (multiplexers, server, and keyboard).
 - Three years on Camclosure® and fixed camera models, except the CC3701H-2, CC3701H-2X, CC3751H-2, CC3651H-2X, MC3651H-2, and CC3651H-2X camera models, which have a five-year warranty.
 - Two years on standard motorized or fixed focal length lenses.
 - Two years on Legacy®, CM6700/CM6800/CM9700 Series matrix, and DF5/DF8 Series fixed dome products.
 - Two years on Spectra®, Esprit®, ExSite™, and PS20 Scanners, including when used in continuous motion applications.
 - Two years on Esprit® and WWW5700 Series window wiper (excluding wiper blades).
 - Eighteen months on DX Series digital video recorders, NVR300 Series network video recorders, and Endura™ Series distributed network-based video products.
 - One year (except video heads) on video cassette recorders (VCRs). Video heads will be covered for a period of six months.
 - Six months on all pan and tilts, scanners or preset lenses used in continuous motion applications (that is, preset scan, tour and auto scan modes).
- Pelco will warrant all replacement parts and repairs for 90 days from the date of Pelco shipment. All goods requiring warranty repair shall be sent freight prepaid to Pelco, Clovis, California. Repairs made necessary by reason of misuse, alteration, normal wear, or accident are not covered under this warranty.

Pelco assumes no risk and shall be subject to no liability for damages or loss resulting from the specific use or application made of the Products. Pelco's liability for any claim, whether based on breach of contract, negligence, infringement of any rights of any party or product liability, relating to the Products shall not exceed the price paid by the Dealer to Pelco for such Products. In no event will Pelco be liable for any special, incidental or consequential damages (including loss of use, loss of profit and claims of third parties) however caused, whether by the negligence of Pelco or otherwise.

The above warranty provides the Dealer with specific legal rights. The Dealer may also have additional rights, which are subject to variation from state to state.

If a warranty repair is required, the Dealer must contact Pelco at (800) 289-9100 or (559) 292-1981 to obtain a Repair Authorization number (RA), and provide the following information:

1. Model and serial number
2. Date of shipment, P.O. number, Sales Order number, or Pelco invoice number
3. Details of the defect or problem

If there is a dispute regarding the warranty of a product which does not fall under the warranty conditions stated above, please include a written explanation with the product when returned.

Method of return shipment shall be the same or equal to the method by which the item was received by Pelco.

RETURNS

In order to expedite parts returned to the factory for repair or credit, please call the factory at (800) 289-9100 or (559) 292-1981 to obtain an authorization number (CA number if returned for credit, and RA number if returned for repair).

All merchandise returned for credit may be subject to a 20% restocking and refurbishing charge.

Goods returned for repair or credit should be clearly identified with the assigned CA or RA number and freight should be prepaid. Ship to the appropriate address below.

If you are located within the continental U.S., Alaska, Hawaii or Puerto Rico, send goods to:

Service Department
Pelco
3500 Pelco Way
Clovis, CA 93612-5699


If you are located outside the continental U.S., Alaska, Hawaii or Puerto Rico and are instructed to return goods to the USA, you may do one of the following:

If the goods are to be sent by a COURIER SERVICE, send the goods to:

Pelco
3500 Pelco Way
Clovis, CA 93612-5699 USA

If the goods are to be sent by a FREIGHT FORWARDER, send the goods to:

Pelco c/o Expeditors
473 Eccles Avenue
South San Francisco, CA 94080 USA
Phone: 650-737-1700
Fax: 650-737-0933

 **Green** The materials used in the manufacture of this document and its components are compliant to the requirements of Directive 2002/95/EC.



This equipment contains electrical or electronic components that must be recycled properly to comply with Directive 2002/96/EC of the European Union regarding the disposal of waste electrical and electronic equipment (WEEE). Contact your local dealer for procedures for recycling this equipment.

REVISION HISTORY

Manual #	Date	Comments
C2458M	7/02	Original version.
C2458M-A	4/03	Added IPS-RDPE-2 and Esprit information.
C2458M-B	1/04	Revised per ECO 03-9497 for software revision.
C2458M-C	8/04	Added COM2 port to PC section per ECO 04-9702.
C2458M-D	7/05	Added ExSite system information.
C2458M-E	10/06	Made references to Spectra more generic by removing series numbers. Added Green label.

Pelco, the Pelco logo, Spectra, Genex, Coaxitron, Esprit, Camclosure, and Legacy are registered trademarks of Pelco. Windows, Windows NT, and ActiveSync are registered trademarks of Microsoft Corporation.

HotSync and Palm OS are registered trademarks of Palm, Inc.

Spectra II, Spectra III, and ExSite are a trademarks of Pelco.

Palm is a trademark of Palm, Inc.

iPAQ is a trademark of Compaq Information Technologies Group.

© Copyright 2006, Pelco. All rights reserved.



Worldwide Headquarters
3500 Pelco Way
Clovis, California 93612 USA

USA & Canada
Tel: 800/289-9100
Fax: 800/289-9150
International
Tel: 1-559/292-1981
Fax: 1-559/348-1120

www.pelco.com

ISO9001

Australia | Canada | Finland | France | Italy | Russia | Singapore | Spain | Sweden
The Netherlands | United Arab Emirates | United Kingdom | United States

Free Manuals Download Website

<http://myh66.com>

<http://usermanuals.us>

<http://www.somanuals.com>

<http://www.4manuals.cc>

<http://www.manual-lib.com>

<http://www.404manual.com>

<http://www.luxmanual.com>

<http://aubethermostatmanual.com>

Golf course search by state

<http://golfingnear.com>

Email search by domain

<http://emailbydomain.com>

Auto manuals search

<http://auto.somanuals.com>

TV manuals search

<http://tv.somanuals.com>