

**PELCO**

by Schneider Electric

**INSTALLATION/OPERATION**

## **IPS-CABLE Serial Interface Cable**



**For use with Windows®-Based Computers**

**C2458M-F (4/11)**



# Contents

---

Description .....	5
Parts List .....	5
User Supplied Parts List .....	5
Uploaded Software (Spectra III, Spectra IV, and ExSite Systems Only) .....	5
Installation .....	6
Installing the Control/Upload Utility .....	6
Installing the IPS-CABLE: 9-Pin Serial Connection .....	7
Installing the IPS-CABLE: USB Connection .....	8
Operation .....	9
Controlling the Camera System .....	9
PTZ Control Menu .....	10
Uploading the Software (Spectra III, Spectra IV, and ExSite Systems Only) .....	11

# List of Illustrations

---

1	IPS-CABLE Installation with 9-Pin Serial Connection .....	7
2	IPS-CABLE Installation with USB Connection .....	8
3	Downloader II Application Window .....	9
4	PTZ Control Window .....	10
5	Downloader II Window .....	11
6	Browsing for a Download File .....	12
7	Download Window .....	13

# Description

---

The IPS-CABLE provides the serial interface between an IPS-RDPE-2 remote data port or Spectra® dome system and a Microsoft® Windows®-based computer. The interface cable transmits data for local viewing, configuration, and pan/tilt/zoom (PTZ) control of Spectra™ III, Spectra IV, Esprit®, and ExSite® Series systems. The cable can also upload revised operating software and language files to Spectra III, Spectra IV, and ExSite Series systems.

## NOTES:

- The IPS-CABLE is not compatible with Spectra II and earlier dome systems.
- The Palm® OS-compatible handheld and iPAQ Pocket PC methods for downloading Spectra and ExSite software are obsolete. Use the Windows-based computer method to download newer versions of Spectra and ExSite software. The Palm OS and iPAQ Pocket PC handhelds can still be used to control a camera system or to download older versions of camera software.

## PARTS LIST

The following parts are supplied:

Qty	Description
-----	-------------

1	IPS-CABLE interface cable
1	USB-to-serial portable adapter cable
1	Male-to-male adapter
1	Resource disc

## USER SUPPLIED PARTS LIST

A null modem cable is required for the installation (refer to Figure 1 on page 7) but is not supplied.

## UPLOADED SOFTWARE (SPECTRA III, SPECTRA IV, AND EXSITE SYSTEMS ONLY)

Uploaded software files contain a file name that identifies the software version. For example, file name *sp4app2301.h64* is the application software for Spectra IV version 2.301.

For the latest version of software, refer to our Web site at [www.pelco.com](http://www.pelco.com).

To upload software using the IPS-RDPE-2 remote data port, the following system software must be installed:

- **Spectra III and Spectra IV dome drives:** Require version 1.2 or later.
- **ExSite explosion-proof system:** Requires version 1.13 or later.
- **Esprit system:** Software cannot be uploaded to an Esprit system.

# Installation

---

To interface with a Spectra dome drive or IPS-RDPE-2 remote data port using a Windows-based computer, you must install the control/upload utility before you install the IPS-CABLE.

The control/upload utility is compatible with the following operating systems:

Windows 95  
Windows 98  
Windows ME  
Windows 2000  
Windows XP  
Windows NT® with service pack 6

## INSTALLING THE CONTROL/UPLOAD UTILITY

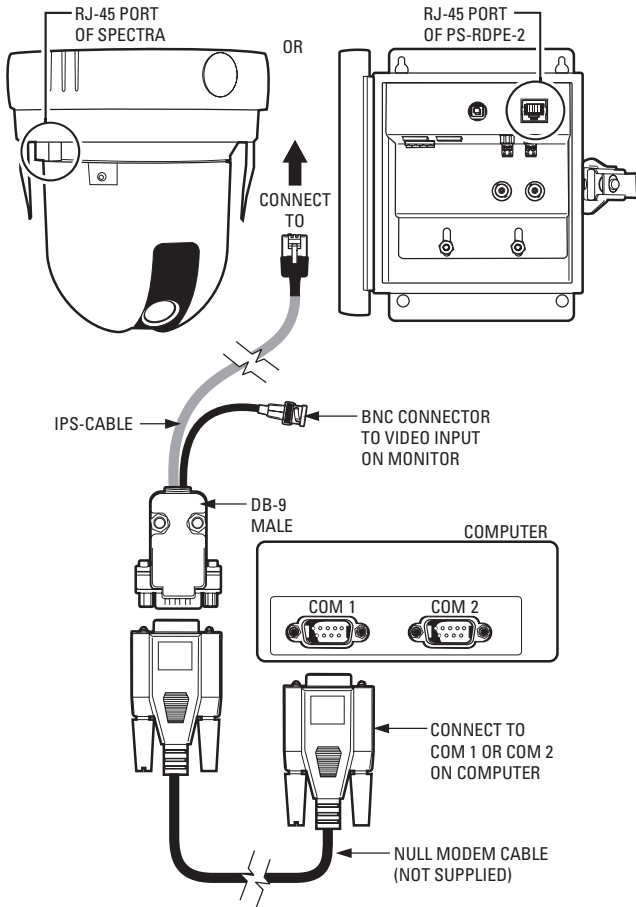
1. Insert the Resource disc into the CD drive. The main menu appears.  
**NOTE:** If autoplay is not enabled on your system, navigate to the CD drive and select Start to open the main menu.
2. Click the Control/Upload Utility button for the desired system. The Install Shield Wizard starts.
3. Follow the instructions displayed on the monitor.

## INSTALLING THE IPS-CABLE: 9-PIN SERIAL CONNECTION

To install the IPS-CABLE to computers with a 9-pin serial connection, refer to Figure 1 and perform the following steps:

1. Connect a null modem cable (not supplied) to the COM1 or COM2 serial port on the computer.
2. Connect the 9-pin male connector from the IPS-CABLE (supplied) to the null modem cable.
3. Connect the IPS-CABLE to the RJ-45 port of the desired dome drive or IPS-RDPE-2.

**NOTE:** When connected, the IPS-CABLE will interrupt control from the normal control source.



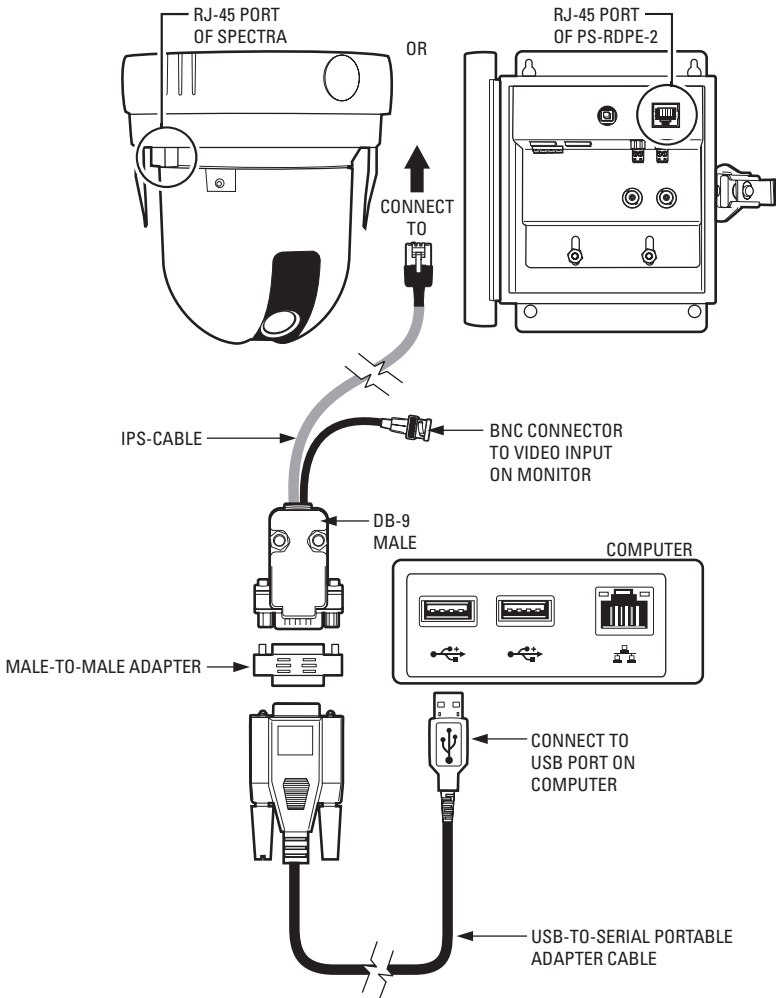
**Figure 1.** IPS-CABLE Installation with 9-Pin Serial Connection

## INSTALLING THE IPS-CABLE: USB CONNECTION

To install the IPS-CABLE to computers with a USB connection, refer to Figure 2 and perform the following steps:

1. Connect the USB-to-serial portable adapter cable (supplied) to the USB port on the computer, and then connect it to the male-to-male adapter (supplied).
2. Connect the 9-pin male connector from the IPS-CABLE (supplied) to the male-to-male adapter, and then connect it to the USB-to-serial portable adapter cable.
3. Connect the IPS-CABLE to the RJ-45 port of the desired dome drive or IPS-RDPE-2.

**NOTE:** When connected, the IPS-CABLE will interrupt control from the normal control source.



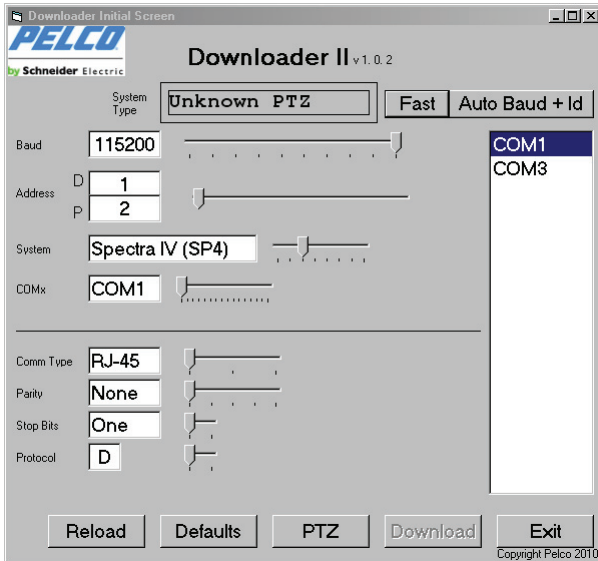
**Figure 2.** IPS-CABLE Installation with USB Connection



# Operation

## CONTROLLING THE CAMERA SYSTEM

1. Click the application icon located on your desktop. The Downloader II window appears.



**Figure 3.** Downloader II Application Window

2. Select the system type, and then type the unit address. The valid communication configuration options are configurable based on the unit type.
3. Select the port from the list of valid ports located on the right side of the window.
4. Click the Fast or Auto Baud + Id buttons for a quick connection to the unit.
5. Click the PTZ button to open the PTZ Control window (refer to Figure 4 on page 10).

## PTZ CONTROL MENU

The PTZ Control window contains the following buttons (refer to Figure 4):

### Directional buttons/sliders:

- The directional buttons (Up, Down, Left, Right, and Stop), located in the middle of the window, control the pan and tilt function.
- Alternatively, you can control the pan and tilt function using the sliders, which are located to the right and beneath the directional buttons.

**Open/Close:** Sends a command to the camera to open or close the Iris. In Menu mode, the Open and Close Iris commands select and release menu options.

**Reset PTZ:** Sends a reset command to the dome drive, causing it to restart.

**Reset Camera:** Sends a reset command to the integrated optics package (IOP), causing it to restart.

**Near/Far:** Provides focus adjustment capability.

**Tele/Wide:** Provides zoom capability.

**Menu:** Accesses the camera menu.

**Return:** Returns you to the main menu.

**Exit:** Closes the PTZ Control and Downloader II menus.

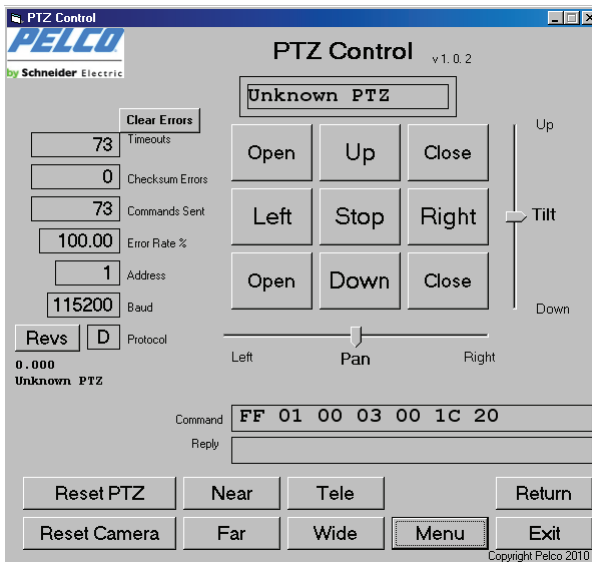


Figure 4. PTZ Control Window

# UPLOADING THE SOFTWARE (SPECTRA III, SPECTRA IV, AND EXSITE SYSTEMS ONLY)

The following system software must be installed to upload software using the IPS-RDPE-2 remote data port:

- **Spectra III and Spectra IV dome drives:** Require version 1.2 or later.
- **ExSite explosionproof system:** Requires version 1.13 or later.
- **Esprit system:** Software cannot be uploaded to an Esprit system.

To upload software:

1. Click the application icon located on your desktop.
2. Insert the Resource disc into the CD drive.
3. After connecting to the unit, select the Download button located at the bottom of the Downloader II window (refer to Figure 5). The Open window appears (refer to Figure 6 on page 12).

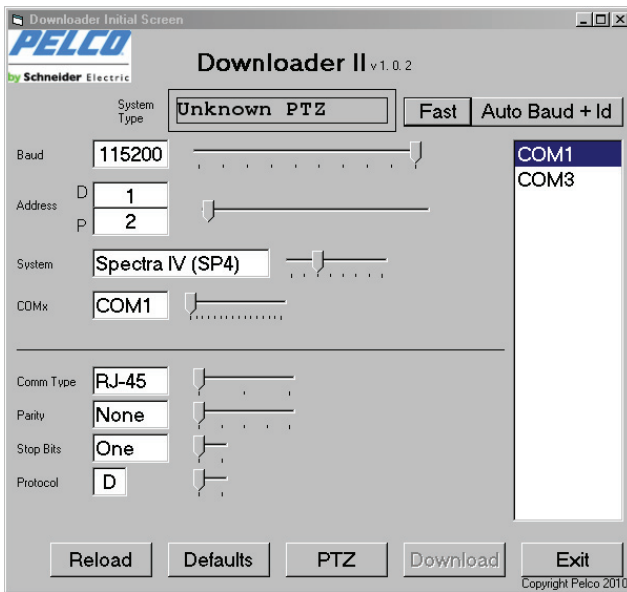
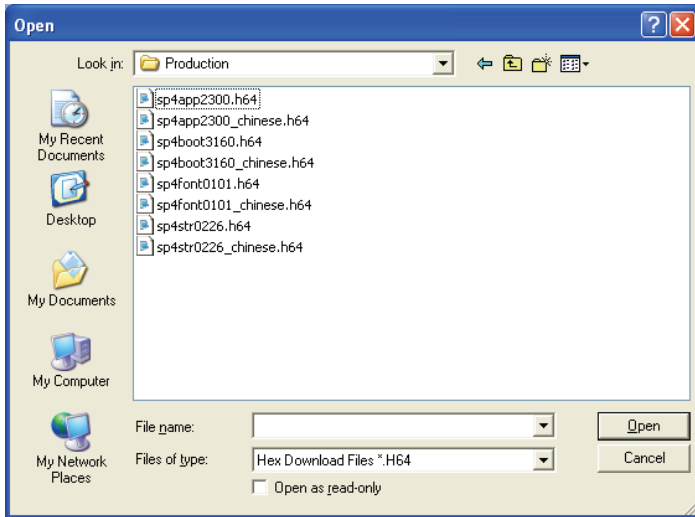


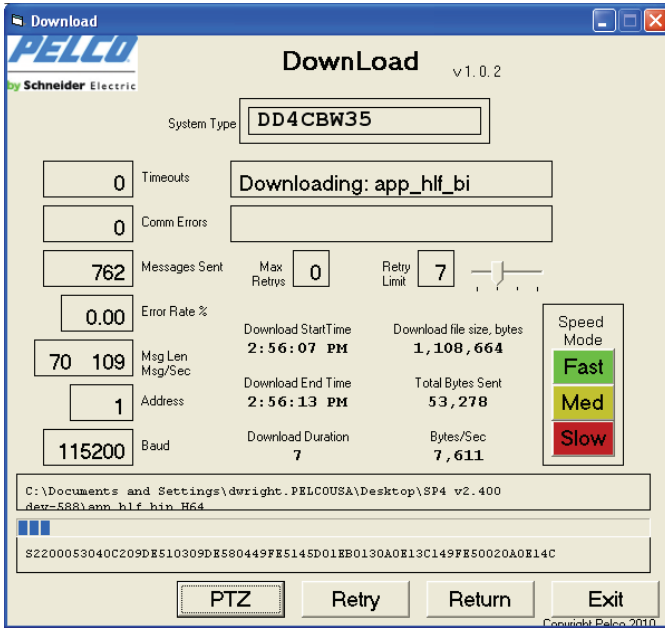
Figure 5. Downloader II Window

4. Select the file you want to download from the list.



**Figure 6.** Browsing for a Download File

Once selected, the file is downloaded to the unit and status information appears in the Download window.



**Figure 7. Download Window**

5. Wait until the Configure Done message appears before disconnecting the IPS-CABLE.



**WARNING:** To prevent damage to the system, never cycle power or attempt control of the system during the upload process. The upload process is not complete until the system reboots and the Configure Done message appears.

## REVISION HISTORY

Manual #	Date	Comments
C2458M	7/02	Original version.
C2458M-A	4/03	Added IPS-RDPE-2 and Esprit information.
C2458M-B	1/04	Revised per ECO 93-9497 for software revision.
C2458M-C	8/04	Added COM2 port to PC section per ECO 04-9702.
C2458M-D	7/05	Added ExSite system information.
C2458M-E	10/06	Made references to Spectra more generic by removing series numbers. Added RoHS label.
C2458M-F	4/11	Removed the Palm OS-compatible handheld and iPAQ Pocket PC methods for downloading Spectra III, Spectra IV, and ExSite software. Updated information on uploading software and controlling a system using a Windows-based computer. Added a graphic showing a USB connection.

Pelco, the Pelco logo, and other trademarks associated with Pelco products referred to in this publication are trademarks of Pelco, Inc. or its affiliates. All other product names and services are the property of their respective companies.

Product specifications and availability are subject to change without notice.

© Copyright 2011, Pelco, Inc. All rights reserved.

## PRODUCT WARRANTY AND RETURN INFORMATION

### WARRANTY

Pelco will repair or replace, without charge, any merchandise proved defective in material or workmanship for a period of one year after the date of shipment.

Exceptions to this warranty are as noted below:

- Five years:
  - Fiber optic products
  - Unshielded Twisted Pair (UTP) transmission products
  - CC3701H-2, CC3701H-2X, CC3751H-2, CC3651H-2X, MC3651H-2, and MC3651H-2X camera models
- Three years:
  - Pelco-designed fixed network cameras and network dome cameras with Sarix™ technology.
  - Pelco-branded fixed camera models (CCC1390H Series, C10DN Series, C10CH Series, and IP3701H Series)
  - EH1500 Series enclosures
  - Spectra® IV products (including Spectra IV IP)
  - Camclosure® Series (IS, ICS, IP) integrated camera systems
  - DX Series digital video recorders (except DX9000 Series which is covered for a period of one year), DVR5100 Series digital video recorders, Digital Sentry® Series hardware products, DVX Series digital video recorders, and NVR300 Series network video recorders
  - Endura® Series distributed network-based video products
  - Genex® Series products (multiplexers, server, and keyboard)
  - PMCL200/300/400 Series LCD monitors
  - PMCL5xx Series FHD monitors
- Two years:
  - Standard varifocal, fixed focal, and motorized zoom lenses.
  - DF5/DF8 Series fixed dome products
  - Legacy® Series integrated positioning systems
  - Spectra III™, Spectra Mini, Spectra Mini IP, Esprit®, ExSite®, and PS20 scanners, including when used in continuous motion applications.
  - Esprit Ti and TI2500 Series thermal imaging products
  - Esprit and VVW5700 Series window wiper (excluding wiper blades).
  - CM6700/CM6800/CM9700 Series matrix
  - Digital Light Processing (DLP®) displays (except lamp and color wheel). The lamp and color wheel will be covered for a period of 90 days. The air filter is not covered under warranty.
  - Intelli-M® eIDC controllers
- One year:
  - Video cassette recorders (VCRs), except video heads. Video heads will be covered for a period of six months.
- Six months:
  - All pan and tilts, scanners, or preset lenses used in continuous motion applications (preset scan, tour, and auto scan modes).

Pelco will warrant all replacement parts and repairs for 90 days from the date of Pelco shipment. All goods requiring warranty repair shall be sent freight prepaid to a Pelco designated location. Repairs made necessary by reason of misuse, alteration, normal wear, or accident are not covered under this warranty.

Pelco assumes no risk and shall be subject to no liability for damages or loss resulting from the specific use or application made of the Products. Pelco's liability for any claim, whether based on breach of contract, negligence, infringement of any rights of any party or product liability, relating to the Products shall not exceed the price paid by the Dealer to Pelco for such Products. In no event will Pelco be liable for any special, incidental, or consequential damages (including loss of use, loss of profit, and claims of third parties) however caused, whether by the negligence of Pelco or otherwise.

The above warranty provides the Dealer with specific legal rights. The Dealer may also have additional rights, which are subject to variation from state to state.

If a warranty repair is required, the Dealer must contact Pelco at (800) 289-9100 or (559) 292-1981 to obtain a Repair Authorization number (RA), and provide the following information:

1. Model and serial number
2. Date of shipment, P.O. number, sales order number, or Pelco invoice number
3. Details of the defect or problem

If there is a dispute regarding the warranty of a product that does not fall under the warranty conditions stated above, please include a written explanation with the product when returned.

Method of return shipment shall be the same or equal to the method by which the item was received by Pelco.


### RETURNS

To expedite parts returned for repair or credit, please call Pelco at (800) 289-9100 or (559) 292-1981 to obtain an authorization number (CA number if returned for credit, and RA number if returned for repair) and designated return location.

All merchandise returned for credit may be subject to a 20 percent restocking and refurbishing charge.

Goods returned for repair or credit should be clearly identified with the assigned CA or RA number and freight should be prepaid.

2-10-10

 The materials used in the manufacture of this document and its components are compliant to the requirements of Directive 2002/95/EC.



This equipment contains electrical or electronic components that must be recycled properly to comply with Directive 2002/96/EC of the European Union regarding the disposal of waste electrical and electronic equipment (WEEE). Contact your local dealer for procedures for recycling this equipment.

***PELCO***

by **Schneider** Electric

[www.pelco.com](http://www.pelco.com)

Pelco by Schneider Electric 3500 Pelco Way Clovis, California 93612-5699 United States  
USA & Canada Tel (800) 289-9100 Fax (800) 289-9150  
International Tel +1 (559) 292-1981 Fax +1 (559) 348-1120



## Free Manuals Download Website

<http://myh66.com>

<http://usermanuals.us>

<http://www.somanuals.com>

<http://www.4manuals.cc>

<http://www.manual-lib.com>

<http://www.404manual.com>

<http://www.luxmanual.com>

<http://aubethermostatmanual.com>

Golf course search by state

<http://golfingnear.com>

Email search by domain

<http://emailbydomain.com>

Auto manuals search

<http://auto.somanuals.com>

TV manuals search

<http://tv.somanuals.com>