

PELONIS

OWNER'S MANUAL

16" Oscillating Stand Fan with Remote Control

Model No. FS40-G5



READ AND SAVE THESE INSTRUCTIONS

IMPORTANT SAFETY INFORMATION

RULES FOR SAFE OPERATION

1. Never insert fingers or any other objects through the grill when the fan is running.
2. Disconnect the fan when moving it from one location to another.
3. Disconnect the fan when removing the grills for cleaning.
4. Be sure the fan is on a stable surface when operating to avoid overturning.
5. **DO NOT** use the fan in a window as rain may create an electrical hazard.

OVERHEAT PROTECTION

The fan motor is equipped with a thermal fuse that turns the fan off in case of overheating. If overheating occurs, please send the fan in for repair (refer to the Service & Support section of this manual).

WARNING

1. To reduce the risk of fire or electric shock, do not use this fan with any solid-state speed control device.
2. This appliance has a polarized plug (one blade is wider than the other). To reduce the risk of electric shock, this plug is intended to fit in a polarized outlet only one way. If the plug does not fit fully in the outlet, reverse the plug. If it still does not fit, contact a qualified electrician. Do not attempt to defeat this safety feature.
3. Do not leave the fan running unattended.
4. Changes or modifications to this unit not expressly approved by the party responsible for compliance could void the user's authority to operate the equipment.

NOTE: This equipment has been tested and found to comply with the limits for a Class B digital device, pursuant to Part 15 of the FCC Rules. These limits are designed to provide reasonable protection against harmful interference in a residential installation. This equipment generates, uses, and can radiate radio frequency energy and, if not installed and used in accordance with the instructions, may cause harmful interference to radio communications. However, there is no guarantee that interference will not occur in a particular installation. If this equipment does cause harmful interference to radio or television, which can be determined by turning the equipment off and on, the user is encouraged to try to correct the interference by one or more of the following measures:

- Reorient or relocate the receiving antenna.
- Increase the separation between the equipment and receiver.
- Connect the equipment into an outlet on a circuit different from that to which the receiver is connected.
- Consult the dealer or an experienced radio TV technician for help.

ASSEMBLY INSTRUCTIONS

To assemble the fan, follow the instructions by referring to the parts diagram below.

PARTS DIAGRAM

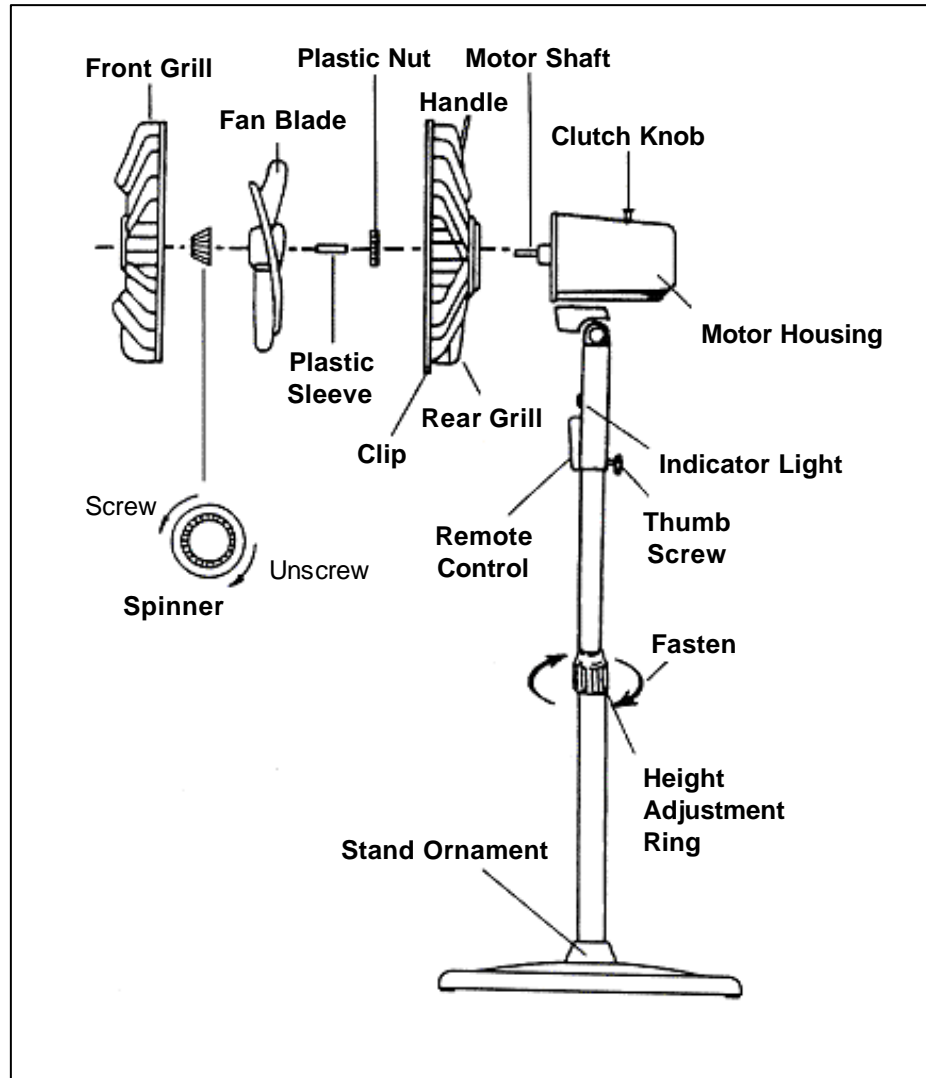


Figure 1

BASE ASSEMBLY

To assemble the base, refer to Figure 2:

1. Unpack the base and column parts from the packing box and loosen the 4 screws.
2. Fix the column onto the base plate using the 4 sets of screws.
3. Unscrew and take off the Height Adjuster, mount the column, and screw the Height Adjuster to tighten the extension column to the desired height.



Figure 2

GRILL AND FAN BLADE ASSEMBLY

To assemble the grills and fan blade, refer to Figure 3:

1. Unscrew the **Spinner** clockwise and the **Plastic Nut** counter clockwise and remove both of them.
2. Set the **Rear grill** in the proper position with the **Handle** up.
3. Screw on the **Plastic Nut** tightly to attach the **Rear Grill**.
4. Discard the **Plastic Sleeve** on the **Motor Shaft**.
5. Install the **Fan Blade** onto the **Motor Shaft** until it reaches the retaining pin.
6. Screw the **Spinner** onto the **Motor Shaft** counter clockwise.
7. Press the rim of the **Front Grill** onto the **Rear Grill** until the front grill is properly fitted. Secure both grills firmly by tightening the fan grill locking screws and nuts through the **Clip**.

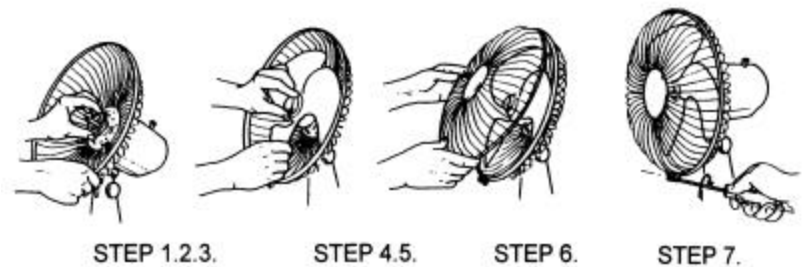


Figure 3

OPERATING INSTRUCTIONS

MANUAL CONTROL OPERATION

To operate the fan manually, use the buttons on the **Fan Control Panel** (first, make sure the Remote Control is detached from the Fan Control Panel to access the buttons).

ON/SPEED/OFF button:

Press the **ON/SPEED/OFF** button to turn the fan **ON**, to change the speed from **Low (L)**, **Medium (M)**, or **High (H)**, or to turn it **OFF**.

TIMER button:

Press the **Timer** button until the desired time of 1, 2, or 4 hours is selected. The fan will operate for the desired length of time chosen and then will shut off automatically. To turn the Timer **OFF**, press the button until all of the timer lights are off.

REMOTE CONTROL OPERATION

The Remote Control can be conveniently stored over the two plastic pins on the **Fan Control Panel**. If the Remote was originally attached to the Fan Control Panel when the product was first purchased, remove it by lifting it so that it detaches from the two plastic pins.

INSTALLING BATTERIES FOR THE REMOTE

1. Press down on the battery compartment cover and slide it out.
2. Insert the batteries (not included), making sure that the positive terminals are facing the proper way. (Note: use size "AAA" manganese or alkaline batteries. Do not use rechargeable batteries).
3. Replace the cover.

ON/OFF button:

Press the **ON/OFF** button to turn the fan **ON** or **OFF**.

SPEED button:

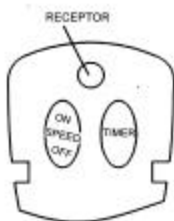
Press the **SPEED** button to change the fan speed from **LOW (L)**, **MEDIUM (M)**, or **HIGH (H)**.

TIMER button:

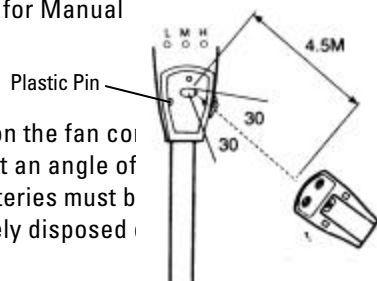
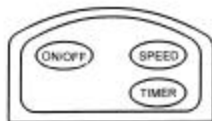
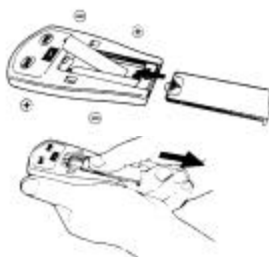
(operates the same as the **TIMER** button function for Manual Control Operation above).

Using the Remote Control

Point the remote control at the receptor located on the fan column the desired button. The remote control will work at an angle of between right and left from the receptor. The batteries must be replaced before they are scrapped and safely disposed.



Fan Control Panel



ADJUSTING THE FAN HEIGHT

Turn the **Height Adjustment Ring** on the fan column **counter clockwise**. Lift or lower the fan column to the desired height and turn the **Height Adjustment Ring clockwise** to secure tightly in place.

ADJUSTING THE WIND DIRECTION

Push the grills slightly up or down to the desired direction.

ADDITIONAL FEATURES

This fan has additional features:

- Thermal Fuse – turns the fan off if it overheats.
- Convenient Carry Handle – allows for easy transport from room to room.

TROUBLESHOOTING

If your fan fails to operate, please follow these instructions:

- Be sure the fan is plugged in and that the electrical outlet is working properly.
- Check for any obstruction. If you find any obstruction, turn the fan **"OFF"**. Unplug the fan and carefully remove the obstruction. Plug the fan in and turn it on again by referring to the **OPERATING INSTRUCTIONS**.

NOTE: IF YOU EXPERIENCE A PROBLEM WITH YOUR FAN, PLEASE SEE THE WARRANTY INFORMATION FOR INSTRUCTIONS. PLEASE DO NOT ATTEMPT TO OPEN OR REPAIR THE FAN YOURSELF. DOING SO MAY VOID THE WARRANTY AND COULD CAUSE DAMAGE OR PERSONAL INJURY. IF THE PROBLEM STILL PERSISTS, PLEASE CONTACT US BY REFERRING TO THE SERVICE & SUPPORT INFORMATION ON THE FOLLOWING PAGE.

CLEANING AND STORAGE

It is recommended that the fan be cleaned at least one time during the operating season in order to provide the optimum level of performance. **ALWAYS TURN THE POWER OFF AND UNPLUG THE FAN BEFORE CLEANING**. Be sure to save the box for off-season storage.

- Turn the fan **"OFF"** and unplug it.
- Clean the plastic parts with mild soap and a damp cloth.
- Do not use any cleaning agents or detergents.
- Never immerse the fan in water.
- To dismantle the fan, reverse the assembly order.
- Pack the fan in the original carton and store it in a cool and dry place.

SPECIFICATIONS

Model No.: FS40-G5

Voltage: 120V, 60Hz

SERVICE & SUPPORT

For usage tips about this fan, to register your fan warranty online, or to obtain information about other Pelonis USA products, please visit our website at www.pelonis.com.

In the event of a warranty claim or if service is required for this fan, please contact us at the following:

Toll Free: 1-800-842-1289 or 1-610-695-8700 (M-F 9:00am to 5:00pm EST)
Email us at: service@pelonis.com

For questions or comments, please write to:

Pelonis USA, Ltd.
Att: Consumer Relations Department
P.O. Box 785
Malvern, PA 19355 USA

For your records, staple your sales receipt to this manual and record the following:

DATE OF PURCHASE: _____

PLACE OF PURCHASE: _____

(STAPLE SALES RECEIPT HERE)

NOTE: PROOF OF PURCHASE IS REQUIRED FOR ALL WARRANTY CLAIMS

ONE (1) YEAR LIMITED WARRANTY

- Please read all instructions before attempting to use this product.
- Please return the Warranty Registration card within fifteen (15) days from the date of purchasing this product.

Pelonis USA, Ltd., referred to hereafter as Pelonis USA, warrants as limited herein to the original purchaser of retail that each new FS40-G5 Oscillating Stand Fan, shall be free of defects in material and workmanship for a period of one (1) year from the date of original purchase. This one (1) year warranty is limited to the fan motor, fan blades, and electric control circuit board.

In the event of malfunctions or failure of your FS40-G5 Oscillating Stand Fan, simply deliver or send the product, postage prepaid along with **PROOF OF PURCHASE**, within the warranty period of one (1) year, to Pelonis USA. Pelonis USA reserves the right to inspect the claimed defective part or parts to determine if the defect or malfunction complaint is covered by this warranty. Pelonis USA shall, within sixty (60) days after receipt of the product, at its option, repair and/or replace the defective part or parts free of charge. This warranty shall only cover defects arising from normal usage. Pelonis USA assumes no responsibility whatsoever if the FS40-G5 Oscillating Stand Fan should fail during the warranty period by reason of:

- Misuse, negligence, physical damage or accidents.
- Lack of maintenance (see instructions for proper maintenance).
- Repair by any unauthorized party during the warranty period.
- Damage caused by connection to an improper input voltage (see Operating Instructions for proper voltage information).

Pelonis USA makes no further warranties or representations, express or implied except those contained herein. No representative or dealer is authorized to assume any other liability regarding the FS40-G5 Oscillating Stand Fan. The duration of the implied warranty granted under State law, including warranties of merchantability and fitness for particular purpose are limited in duration should the duration of the express warranty grant it hereunder. Pelonis USA shall in no event be liable for direct, indirect, special or consequential damages.

Some states do not allow limitations on how long an implied warranty lasts, and/or the above limitations or exclusion may not apply to you. This warranty gives you specific legal rights and you may have other rights which vary from state to state.

Should your FS40-G5 Oscillating Stand Fan fail to operate under the terms of this limited warranty, contact Pelonis USA at 1-800-842-1289 or 1-610-695-8700 (M-F 9:00am to 5:00pm EST).

Free Manuals Download Website

<http://myh66.com>

<http://usermanuals.us>

<http://www.somanuals.com>

<http://www.4manuals.cc>

<http://www.manual-lib.com>

<http://www.404manual.com>

<http://www.luxmanual.com>

<http://aubethermostatmanual.com>

Golf course search by state

<http://golfingnear.com>

Email search by domain

<http://emailbydomain.com>

Auto manuals search

<http://auto.somanuals.com>

TV manuals search

<http://tv.somanuals.com>