



# Digital Media Player

**MP3 Player / Software MP4 Video Player / Picture Browser / Voice Recorder / E-Book / FM Radio / Flash Memory Drive**



## User's Manual

**(For Model #06201, UPC Code 084478062012)**

Release 1.0 (March 2007)

The Product and materials mentioned in this manual are subject to change without prior notice.

## **Contents**

---

Precautions.....	
Characteristics.....	
About the Player.....	
Screen Descriptions.....	
Basic Operation.....	
System Menu.....	
Settings Menu.....	
Listen to Music.....	
Voice REC.....	
Resources Manager.....	
Picture Browse/FM.....	
E-Book.....	
Game Function (Optional).....	
USB Disk.....	
Transfer and Play Video File.....	
Upgrade Player Driver.....	
Troubleshooting.....	
Specifications.....	

## **Precautions**

---

This manual contains important safety measurements and proper operation information. Please read all the information carefully before using the device in order to avoid any unexpected accidents.

- Do not expose the player to extreme conditions (High Temperature, Humidity, or dust).
- Do not expose the player to a temperature over 40° C. This may cause distortion of the LCD screen.
- Do not knock, hit, or shake the player. Doing so may cause the TFT screen damage or abnormally display objects.
- Select a suitable volume, if you feel your ears tingle turn down the volume.
- Battery service life may vary in different conditions, manufacturer or manufacturing time.
- Do not disconnect the player abruptly during formatting, uploading, or downloading, this could potentially cause a program error.
- Pengo will not be held liable for any memory loss caused by product damage, repair or any other reasons. Please follow operating procedures found in the manual.
- The player, whether powered on or off, can be charged using the USB port of your computer.
- Do not dismantle the player personally, use alcohol, thinner or benzene to clean the surface of the player.
- Do not use the player in any “Electronics-Prohibited” areas, such as on a plane, unless otherwise stated.
- Do not use the player when driving to avoid traffic accidents.
- Please charge in the following conditions:
  - A. Battery electricity icon displays no charge.
  - B. If your player powers off automatically, upon powering it back on the player repeats the shut down process.
  - C. No response when pressing the keys.

※Our Company reserves the right for the improvement of the product. It is subject to any change on the specifications and designs without further notice!

## **Characteristics**

---

- 2-inch 262K full-color TFT display
- Multi music formats: MP3, WMA and WAV, and real audio frequency display
- MPEG-4 video format play, full-screen play display
- High-definition JPEG picture browser function
- Digital recorder
- Energy-saving settings, adjustable brightness control, customizable power off timer
- Supports 3D EQ surround effects, customized EQ
- Supports multiple languages
- USB2.0 ultra-high speed transmission as 5M/S
- Listen to music while reading E-book, with bookmark function
- Listen to music while playing games
- Portable U-disk function, support Firmware Upgrade
- A-B repeat function

## About the Player

---

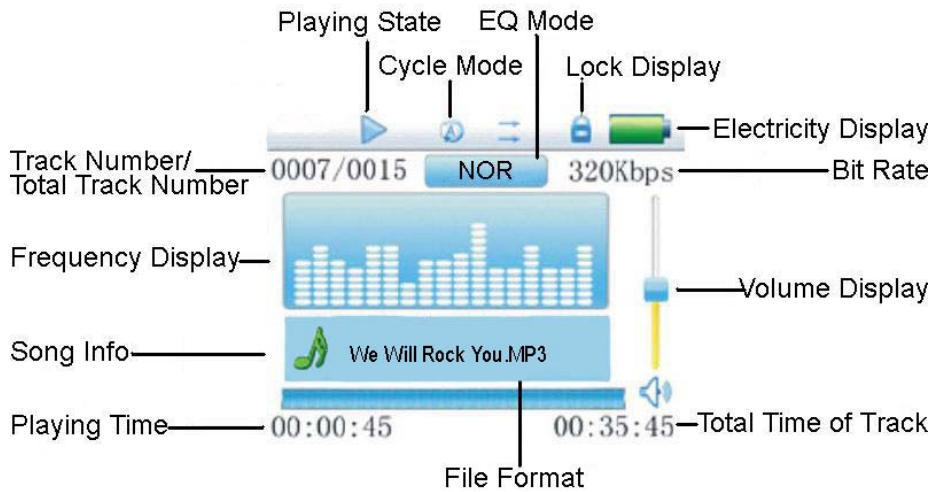


- **Key Explanation:**

1. **ON/OFF: On/Off/Pause switch**
2. **Next/Fast Forward function key (▶ )**
3. **Previous/Fast Reverse function key (◀)**
4. **Play/Mode key (OK)**
5. **Volume decrease (VOL -)**
6. **Volume increase (VOL+)**
7. **Earphone**
8. **USB**

## Screen Description

### ■ Music Play



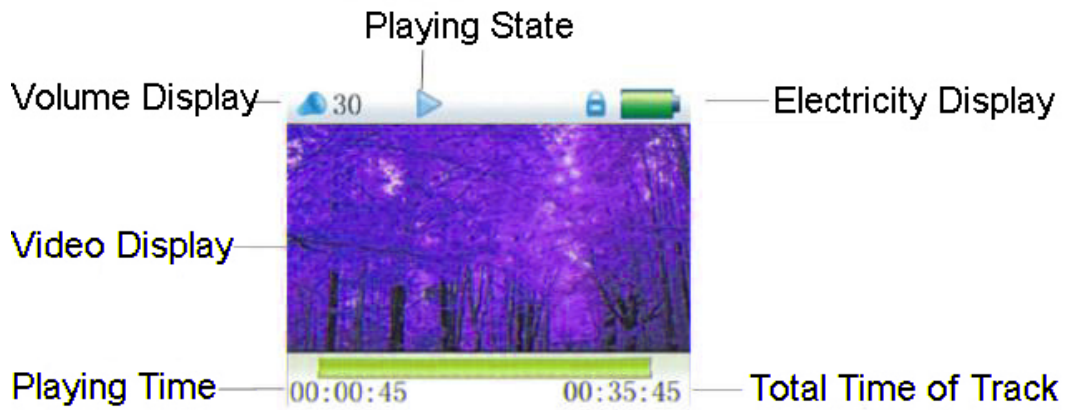
### ■ REC Mode



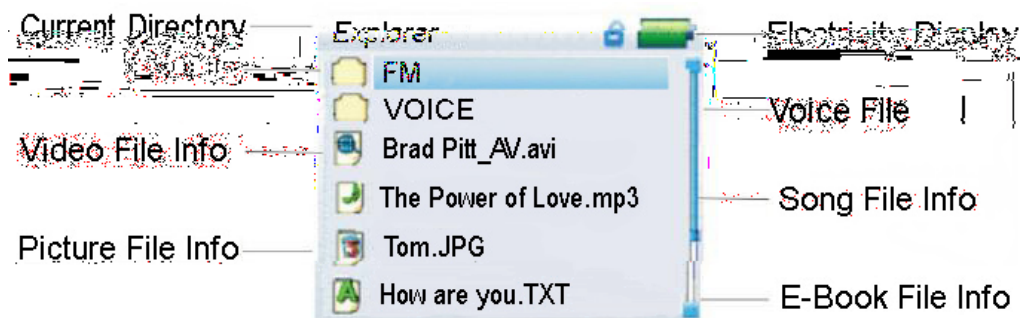
## Screen Description

---

### ■ Video Play



### ■ Picture Browser/E-Book/Resource Manager




## Basic Operation


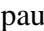

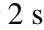
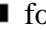
---

### ■ Power On/Off

Power On:

Push the power switch to the ON position, long press  key for 3 seconds, the player will display the Boot interface and enter the working mode before the Normal Power Off.

Power Off:

- In Play state: short press  to pause, press  for 3 seconds to power off.
- In Play state: long press  for 2 seconds to stop, press  for 3 seconds to power off.
- In other modes: press  for 3 seconds to power off.
- The system will power off automatically if the battery has no charge.

### ■ Power Reset

If your player is blocked during the usage, you can push the [ON/OFF] power switch to restart the player.

### ■ Connect to Computer and Data File Transmission

After starting the computer, you can connect the player to the computer via USB cable to utilize the USB power supply or USB data transmission functions. When the player is connected to the computer via USB port, it can also be used as a U disk. This allows you to drag your favorite music or data into the MP3 player files instead of any 3<sup>rd</sup> procedure.

### ■ Volume Control

Press + or \_ to adjust the volume.

### ■ Battery

This player comes equipped with a high capacity lithium-ion battery..



Full Battery

Partially used

Low Battery

Empty (time to charge)

The usable time of battery power may vary according to different volumes, type of files playing or pressing operation buttons. You can save battery power by using the [Customized Power off Time] or [Display Setting] functions.



## System Menu

---

### ■ Main Interface

After entering the Main Interface, select your desired option among [Music ]/[Video ]/ [FM ]/[Photo]/[Text]/[Record]/[Navigation]/[Game]/[Setting] circularly by pushing left or right; short press the **MENU** key to enter the option menu, long press the [MENU] key to exit the submenu and return to the Main Interface



### ■ Setup

In the Main Interface, push left or right to select the [Settings] option, short press the **MENU** key to enter the Settings interface (shown in right bottom); select the sub-option to be set by pushing + or \_.



## Settings Menu

---

- Display Setup

- ① Backlight time has six options - 5 sec., 10 sec., 15 sec., 20 sec., 30 sec., and always on.
- ② Lum has five options - +1, +2, +3, +4 and +5, the higher level, the more bright.
- ③ Backlight mode has two options - Normal or Electricity-saving mode.

- System Setup

Four sub-options: Language, About, Upgrade and Default set.

1. Language Selection: There are eleven languages to choose from: Simplified Chinese, Traditional Chinese, English, Korean, Japanese, Spanish, French, German, Italian, Portuguese, and Russian.
2. About: Player storage memory, remaining memory, and system software version no., this information is read-only, short press the MENU key to exit.
3. Firmware Upgrading: A pop-up dialog box will appear in this menu, confirm whether or not to upgrade the firmware by selecting “Yes” or “No”.
4. Defaulted Set: A pop-up dialog box will appear in this menu, confirm whether or not to return to the defaulted value, select “Yes” or “No”.

- Power Off Time

In this menu, there are six Power options: Off, 10 min., 15 min., 30 min., 60 min. and 120 min.

## **Listen to Music**

---

### ■ Play/Stop/Pause

In the Music Play menu, connect the earphones to the player, select the desired song file by pushing left or right keys, short press the MENU key to begin playing; short press the MENU key to pause, operate it circularly. While playing music, the interface has a real audio frequency display, e.g., for LRC files, behind the frequency is the Synchronous Lyric.

### ■ Lyric Display

The player only supports the Lyric Synchronous Display for the file that shares the same name as LRC file in MP3 format, e.g., the music file is named “Angel.mp3”, the LRC file must be named “Angel.Lrc”; they must also be store in the same directory.

### ■ A-B Repeat function

In the Music Play state, press **A-B** to begin the repeat mode, (A) will display on the screen; press **A-B** again to set the end of the repeating segment, A-B will be displayed and the player will repeat between the beginning and ending points.

### ■ Music Play Setting Menu

In the Music Play state, long press the [MENU] key to enter the Main Menu. Enter the “Music” mode under the “Settings” option; there are multiple options listed, push the + or \_ keys to shift to the desired setup menu. After making your selection, press the MENU key to confirm.

## ■ Listen to Music

---

### 1. Repeat Mode

- a. Once                      Stops after playing all the songs in each directory.
- b. Repeat 1                Repeats playing a single song.
- c. Folder once             Play all the songs in the folder.
- d. Folder repeat         Repeatedly plays all songs in a folder.
- e. All once                 Randomly plays all songs in the current folder.
- f. All repeat               Repeatedly plays all songs on the player.
- g. Intro                     Plays the first 10 seconds of every song in the current folder.

### 2. EQ Select/User EQ Set

Normal/3D/Rock/Pop/Classic/Bass/Jazz/User EQ, The first seven options will give you different music effects; The User EQ function allows you to edit your favorite EQ effect. This operation is done by pressing the left or right MENU keys.



### 3. Play mode

Order  
Shuffle

## Voice REC

---

### ■ Voice REC

In Main Interface, enter the Record state; press the A-B/REC key to start recording, press the A-B/REC key to pause recording, long press the A-B/REC key to save the recorded file and enter the next Recording preparation state. Long press the [MENU] key to save the recording and exit the REC mode.



### ■ REC Setup

In Stop state of REC mode, long press the [MENU] key to exit the Main interface; enter the **Settings menu**, enter the **Record** option and adjust the settings among [REC Quality] and [REC Volume].

1. REC Quality: High Quality and General quality. High Quality has a larger REC file and better effect, General Quality is the opposite)
2. REC Volume has five options - +1, +2, +3, +4 and +5. The higher the level, the higher the recorded volume will be

\*The recorded voice files can be found in the Music Play menu and played to try the selected effect.

\*If the screen displays “Full Space”, it indicates that there is no space for a new recorded file, delete older, unnecessary, or unused files to free up space.

## Other Modes

---

### ■ Resources Manager (Navigation)

Resources manager is one of the function characteristics. It allows you to see the “Inside” file type, structure and contents more clearly for convenient management and searching of file contents.

### ■ Delete File

In Resources Manager (Navigation) mode, you can select music or video files to be deleted; press the A-B/RCA key to display the [Delete] Dialog box, select “Yes” to delete and “No” to cancel. After making your selection, short press the MENU key to implement the selected option.

### ■ JPEG Browser (Photo)

In Main Interface select the [Photo] feature; short press the MENU key to confirm and enter Picture Browse mode, push the + or \_ keys to select the previous or next picture.

### ■ FM (Note: In FM mode, the earphones are used as an antenna)

Enter FM menu, Press **Next or PRE** key to select: Manual, Auto, Mem, Pres, Del



**Manu:** Press MENU Key to confirm, press left or right to change the frequency manually, long press the [MENU] key to exit.

**Auto:** Press MENU to enter, the player will automatically search, after searching the player will display, pres CH XX, press left or right to select the station.

**Mem:** Press the MENU key to enter, press + or \_ to select the stations, press MENU to confirm and store, the frequency displayed on the screen will replace the frequency that was stored before. Short press the MENU key to exit mem., long press the MENU key to return to the FM menu.

**Pres:** Press the MENU key to enter, press left or right to select the stations that have been stored in the player.

**Del:** Press the MENU key to enter, press + or \_ to select the station that you want to delete, press MENU to confirm, after deleting the station's frequency the screen will display "empty", short press MENU to exit mem, then long press MENU to return to the FM menu.

**FM record:**

While listening to music in FM mode, press the A-B/REC key to enter the FM record mode, press the A-B/REC key to record or pause selection, long press the Mode key to store the recorded Music as a file and exit FM record mode.

#### ■ E-Book

**Download TXT File:** Connect the player to your computer, select the desired file to download and save the file in .TXT format on your portable disk.

**Read File:** In the Main Interface, enter Text option, push + or \_ key to select the desired file to read, short press the MENU key to read. Turn the pages by pushing left or right keys.

#### ■ Game Function (Optional)

**Built-in Intellectual Game: Russian Diamond**

In System Menu, enter Game mode, short press the MENU key to enter Game Setup Interface.

**Keys Description:** Russian Diamond is operated in horizontal; short press the MENU key to shift between the Start and Pause functions, push left or right to control the movement of the diamonds. Press + and \_ to change the shape; short press the [MENU] key to drop down an item quickly; long press the [MENU] key to exit.

## USB Disk

---

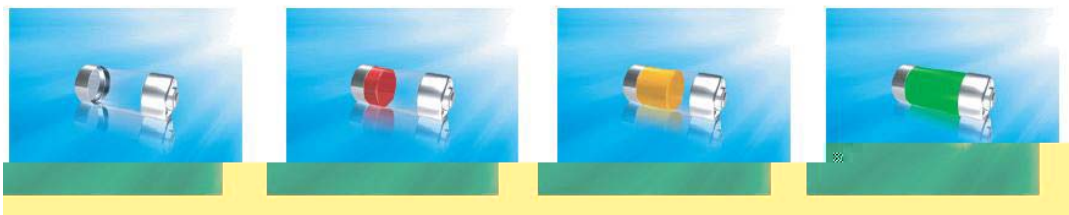
### ■ USB Display Mode

The player has a high-speed USB2.0 port with a transmission speed of 5M/S. This player is a standard USB disk and supports the following systems: Windows98 (Driver installation is necessary), over Windows2K (it's unnecessary to install the driver), Mac OS 10.3 and over, Linux Redhat 8.0 and over. It supports the USB's power supply and can be played without a battery. A few seconds after connecting to the PC, the player will display the On-line mode shown below.



### ■ Charge Display Mode

If the battery is too low, the display will display “Low battery to power off”; the player will power off automatically. You can use the attached charger to charge the battery. While charging, the screen will display the impulse battery icon; after charging, the battery electricity will show full grids (Fig.4). It requires 4 hours to fully charge the battery (Note: The first two times, you will have to charge for 8 hours)





## Convert and Play Video File

This player can play converted AVI Video formats. Most WMV, RM, AVI, VOB or DAT Video files can be converted into AVI video format using the video converter software on the Driver Disc.

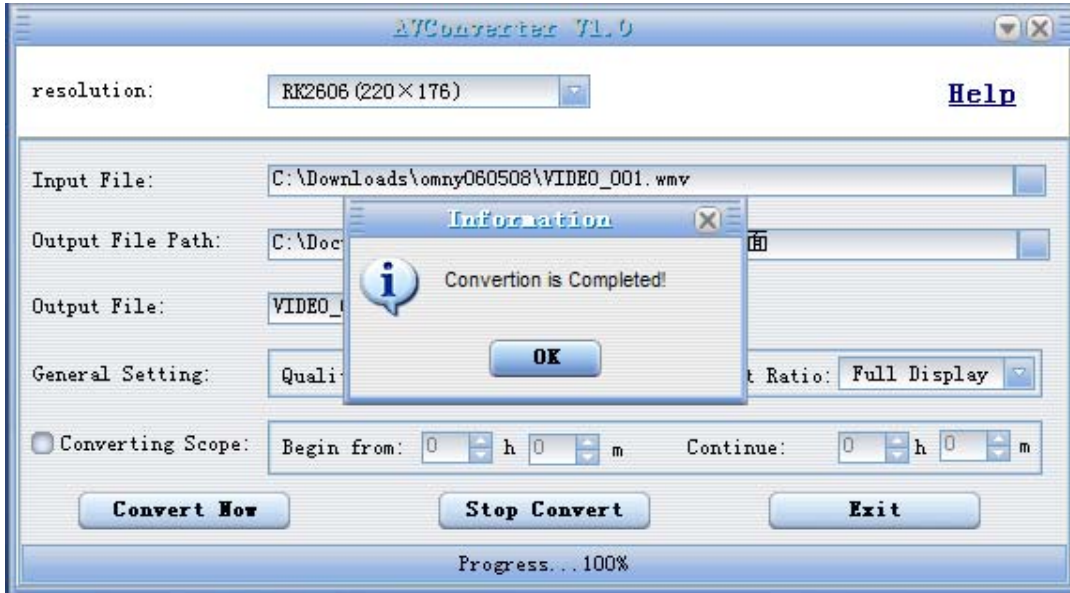
1. Click and run the “AV Converter.exe” program, select your desired video/audio file and AVI video file routine to be generated, shown as follows:



2. Select and set your desired parameters, click the [Start to Convert] button, it then begins to convert into an AVI file.



- The successfully converted AVI video file can be played in your MP4 player. Enter the Video Play menu, select the corresponding file, short press the [MODE] key to play desired video, long press to exit (the Video Play interface refers to the Screen Description).

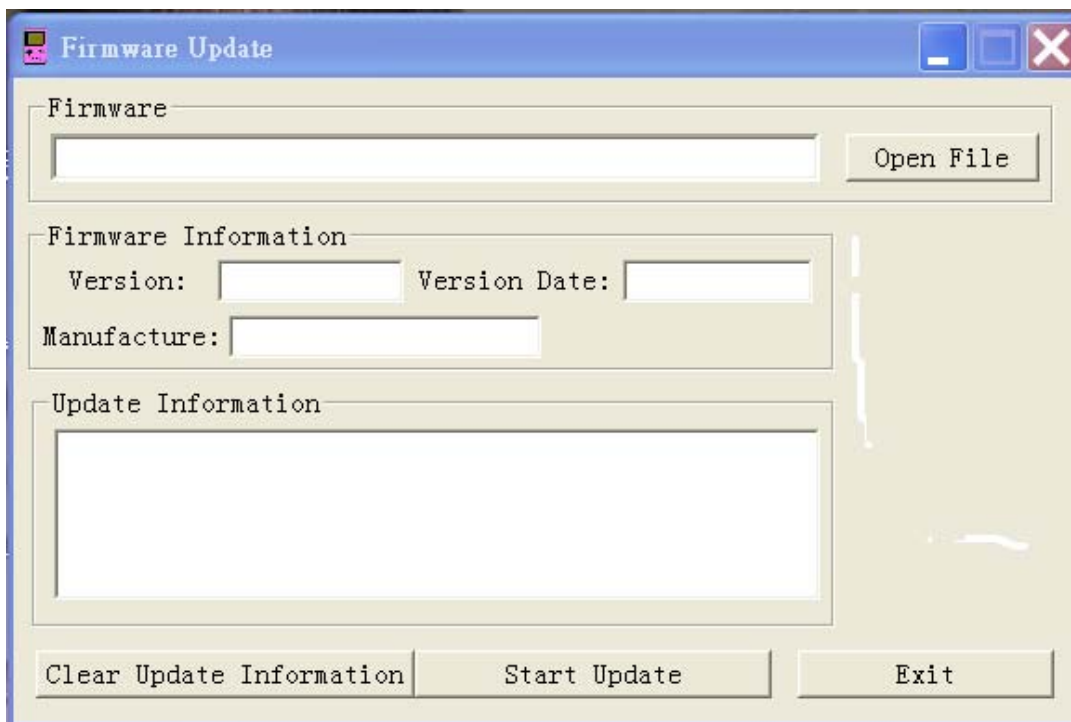


## Upgrade Player Driver

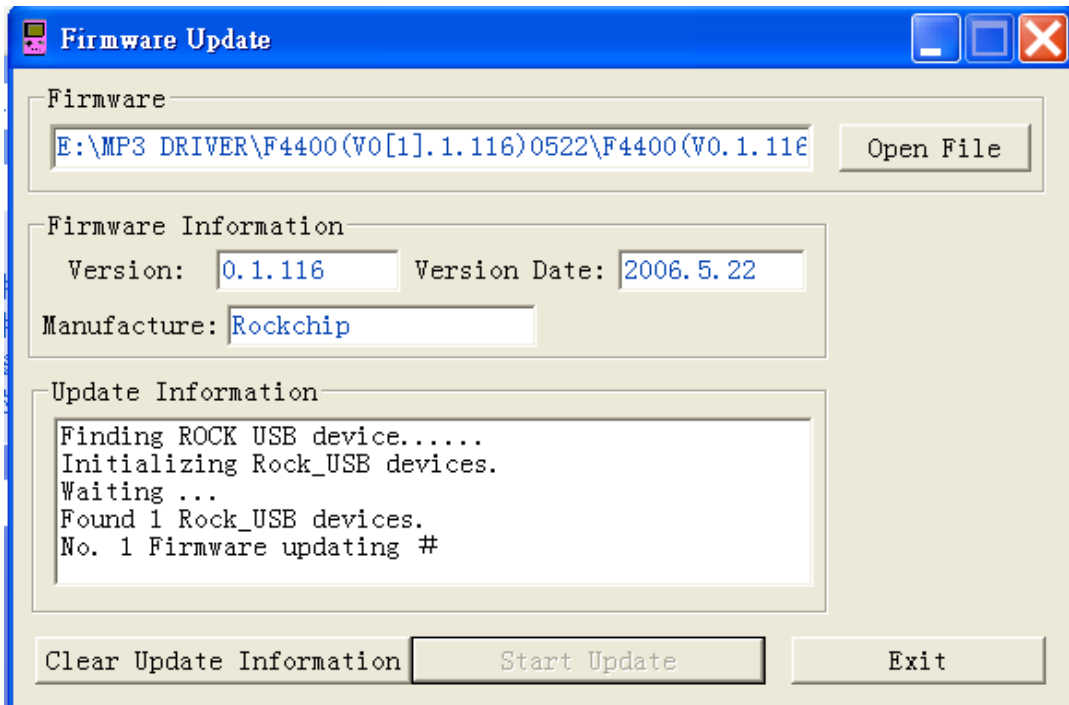
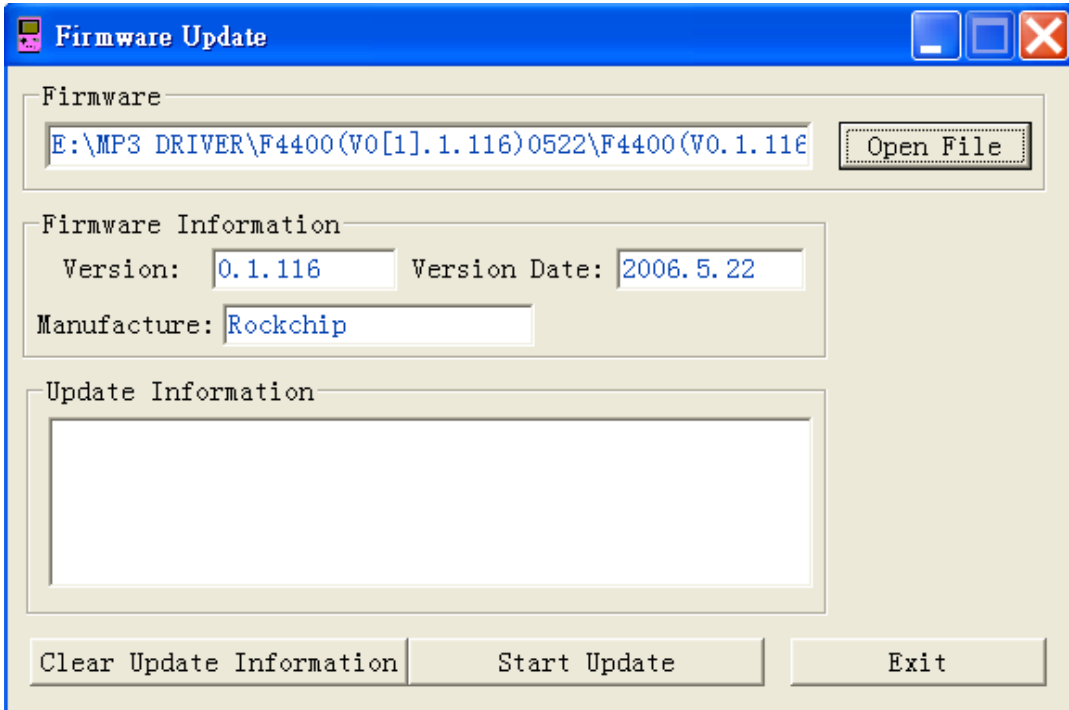
---

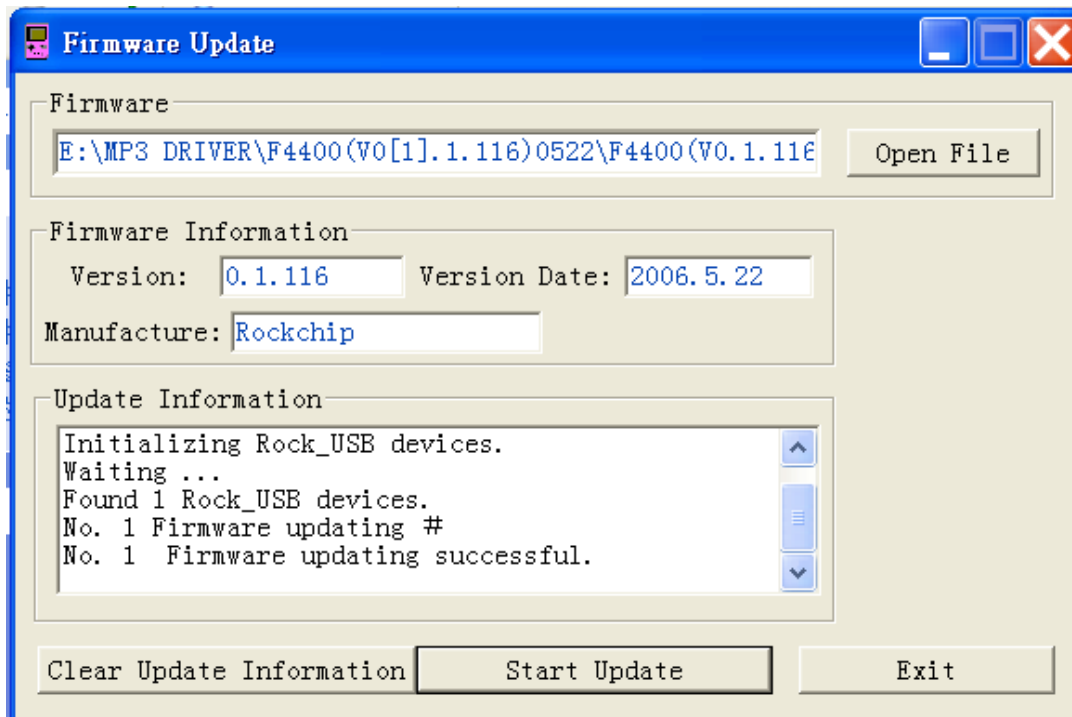
The player can upgrade or restore the damaged player driver using the tool software in the Driver Disk.

1. For the initial upgrading on your computer, you will need to insert the driver disk into the CD-ROM of the computer, connect the MP4 player with the computer, this procedure requires you to press and hold the Left key until the Installation Interface program appears on the screen.
2. Implement the next step according to the Dialog box prompt, select the “Upgrading Tool” folder on the Driver Disk, select the “Browse” option from the fourth Dialog box, then click Confirm.
3. Operate according to the prompts in dialog box until the task is completed.
4. When the installation of programs required by the computer is finished you can begin the upgrading; select and run the firmware upgrading tool “Consumer.exe” (this can be found on the Driver Disk), open and select the “Rock2\*.rhw” file (the Interface is as follows).



5. Connect the player to your PC using a USB cable (press and hold the Left key before the On-line operation), click [Burnt Firmware] until the Auto Upgrading is achieved.





Note: A firmware upgrade is to improve and optimize the performance of the player. The normal work of the player would not be affected even if the firmware isn't upgraded. The wrong operation of upgrading firmware would cause the device not to work normally! The firmware upgrade software of this player should not be applied to any other series/model of player.

## **Troubleshooting**

---

If the player can not be played normally, please check the following:

Troubles	Causes
It cannot be turned on	Check whether the player is powered on or not and whether the machine program is damaged or not
The player is blocked	Push the power switch to restart the player
It cannot be played	Check whether the machine is powered on or not Confirm the volume is not set to "0" level, check and make sure that the earphones are connected well and keep the earphones clean Format the disk again
It cannot upload/download the file or the disk can not be found in computer	Insert USB cable totally well after the Power on. Correctly install the driver again.
I cannot record anything	Check and make sure there is enough memory available and that the battery is charged.
Words on the display are deformed	Make sure that you have selected the correct language
It can not be used normally after upgrading	Upgrade again in Windows 2000

## Product Specifications

---

Items	Specifications
Dimensions	70×45×8mm (W*H*D)
Weight	About 43g
TFT colored display	262K real colored display, Diagram (220*176)
Language support	Multiple languages
Data transmission speed	High speed USB2.0 (5M Byte/s)
Supportable file format	Music: MP3, WMA, WMV, ASF, WAV REC: WAV Picture: JPEG
Supportable video format	AVI, RM, VOB, DAT, RMVB etc. (should be converted)
SNR	90dB
Max. output power	10mW in left and right
Storage media	Embedded Flash, memory 128MB/256MB/512MB/1GB/2GB,
Power supply	3.7V polyether battery
Usable time of battery	Video play: 6 hours MP3 play: 8 hours Voice REC: 10 hours
Working temperature	5°C to 40°C
Supporting operating	

## **PENGO TECHNOLOGIES, INC. (Limited Warranty — U.S. Only)**

The limited warranty set forth below is given by Pengo Technologies, Inc. (“Pengo”) with respect to the **Pengo MP3/MP4/USB Flash Drive Product Line (the “product”)** that you have purchased, when purchased and used in the United States. The product that you have purchased is the only product to which this warranty card and the limited warranty provided by Pengo and stated on the card apply.

Your product, when delivered to you in new condition in its original container, is warranted against defects in materials or workmanship as follows: for a period of **Six (6) months from the date of original purchase**, defective parts or a defective product returned to Pengo for such product, as applicable, and proven to be defective upon inspection, will be exchanged for new or comparable rebuilt parts, or a refurbished product, as determined by Pengo. Warranty repair or replacement shall not extend the original warranty period of the defective product.

This limited warranty shall only apply if the product is used in conjunction with compatible computer equipment and compatible software, as to which items Pengo shall have no responsibility.

This limited warranty covers all defects encountered in normal use of the product, and does not apply in the following cases:

Loss of or damage to the product due to abuse, mishandling, improper packaging by you, alteration, accident, electrical current fluctuations, failure to follow operating, maintenance or environmental instructions prescribed in Pengo’s instruction manual, or services performed by someone other than Pengo.

Use of parts or supplies (other than those sold by Pengo) that cause damage to the product or cause abnormally frequent service calls or service problems. If the product has had its serial number or dating altered or removed.

NO IMPLIED WARRANTY, INCLUDING ANY IMPLIED WARRANTY OF MERCHANTABILITY OR FITNESS FOR A PARTICULAR PURPOSE, APPLIES TO THE PRODUCT AFTER THE APPLICABLE PERIOD OF THE EXPRESS LIMITED WARRANTY STATED ABOVE, AND NO OTHER EXPRESS WARRANTY OR GUARANTEE, EXCEPT AS MENTIONED ABOVE, GIVEN BY ANY PERSON OR ENTITY WITH RESPECT TO THE PRODUCT SHALL BIND PENGO. (SOME STATES DO NOT ALLOW LIMITATIONS ON HOW LONG AN IMPLIED WARRANTY LASTS, SO THE ABOVE LIMITATION MAY NOT APPLY TO YOU.) PENGO SHALL NOT BE LIABLE FOR LOSS OF REVENUES OR PROFITS, INCONVENIENCE, EXPENSE FOR SUBSTITUTE EQUIPMENT OR SERVICE, STORAGE CHARGES, LOSS OR CORRUPTION OF DATA, OR ANY OTHER SPECIAL, INCIDENTAL OR CONSEQUENTIAL DAMAGES CAUSED BY THE USE OR MISUSE OF, OR INABILITY TO USE THE PRODUCT, REGARDLESS OF THE LEGAL THEORY ON WHICH THE CLAIM IS BASED. EVEN IF PENGO HAS BEEN ADVISED OF THE POSSIBILITY OF SUCH DAMAGES, IN NO EVENT SHALL RECOVERY OF ANY KIND AGAINST PENGO BE GREATER IN AMOUNT THAN THE PURCHASE PRICE OF THE PRODUCT SOLD BY PENGO OF WHICH CAUSED THE ALLEGED DAMAGE. WITHOUT LIMITING THE FOREGOING, YOU ASSUME ALL RISK AND LIABILITY FOR LOSS, DAMAGE OR INJURY TO YOU AND YOUR PROPERTY, OR TO OTHERS AND THEIR PROPERTY ARISING OUT OF USE OR MISUSE OF, OR INABILITY TO USE THE PRODUCT NOT CAUSED DIRECTLY BY THE NEGLIGENCE OF PENGO. (SOME STATES DO NOT ALLOW EXCLUSION OR LIMITATION OF INCIDENTAL OR CONSEQUENTIAL DAMAGES, SO THE ABOVE EXCLUSION OR LIMITATION MAY NOT APPLY TO YOU.) THIS LIMITED WARRANTY SHALL NOT EXTEND TO ANYONE OTHER THAN THE ORIGINAL PURCHASER OF THE PRODUCT, OR THE PERSON FOR WHOM IT WAS PURCHASED AS A GIFT, AND STATES YOUR EXCLUSIVE REMEDY.

Pengo offers the following customer technical support options:

1. For e-mail technical support please go to <http://www.pengo.com/pengo.files/supportform.htm>
  2. For the latest driver downloads and FAQs, please go to [http://www.pengo.com/pengo.files/support\\_new.htm](http://www.pengo.com/pengo.files/support_new.htm)
- Free technical support Monday-Friday (excluding holidays) for products still under warranty (Call **1-888-PENGO99** or E-mail to [support@pengo.com](mailto:support@pengo.com)). If the problem can’t be corrected by using one of the above technical support options, you will be asked to follow the applicable procedures for warranty service. Note that a dated proof of purchase (bill of sale) is required to verify eligibility at the time of service. This requirement will be satisfied by providing a copy of your dated bill of sale, as well as the product serial number located under the battery. This limited warranty gives you specific legal rights, not including rights that vary from state to state.



## Free Manuals Download Website

<http://myh66.com>

<http://usermanuals.us>

<http://www.somanuals.com>

<http://www.4manuals.cc>

<http://www.manual-lib.com>

<http://www.404manual.com>

<http://www.luxmanual.com>

<http://aubethermostatmanual.com>

Golf course search by state

<http://golfingnear.com>

Email search by domain

<http://emailbydomain.com>

Auto manuals search

<http://auto.somanuals.com>

TV manuals search

<http://tv.somanuals.com>