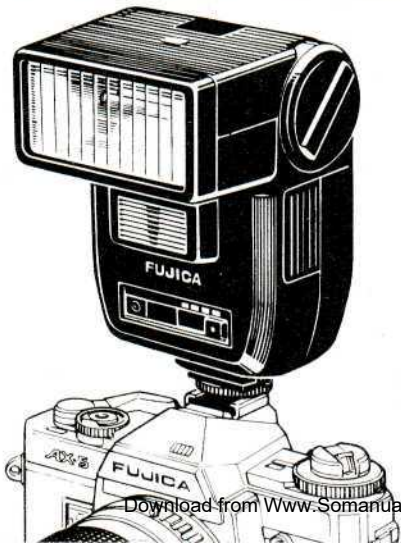




FUJICA

AUTO STROBO 300X



OWNER'S MANUAL

This manual will show you how to use your
FUJICA AUTO STROBO 300X correctly.
Please read it through carefully.

SPECIAL FEATURES

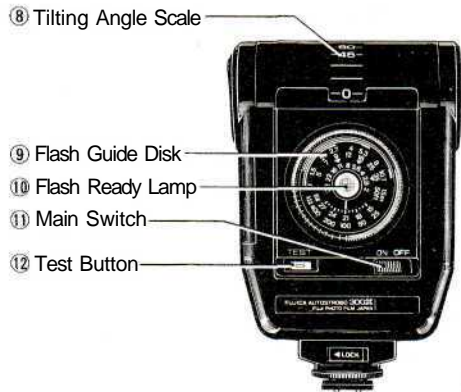
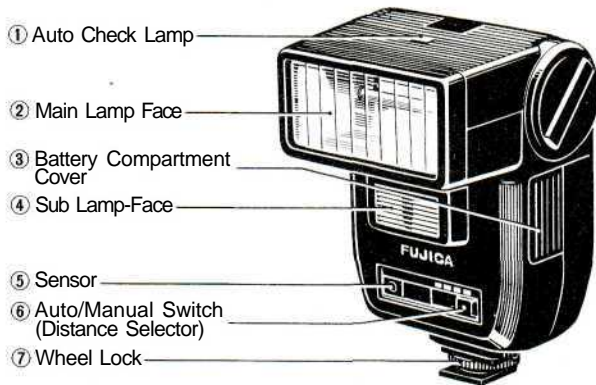
1. Your Fujica Auto Strobe 300X is a high-power series-circuitry computer flash (guide number 30). It provides an option of three apertures to let you freely take automatic flash pictures. For example, if you want to take long-range flash shots, you can use a large aperture and shoot at up to 11 meters. If you want everything in your picture sharply focused, the aperture can be stopped down as far as f/11 (with ISO/ASA 100 film).
2. It is provided for twin-light bounce flash. If the flash head is tilted for bounced lighting, it automatically converts into a twin flash unit having a main light and a sublight. With this flash, you can take perfect bounce-light pictures everytime, although this type of pictures are generally considered difficult to take with flash.
3. Used on the Fujica AX-5, AX-3, AX-1, or AZ-1, it will automatically switch the camera's shutter speed to 1/60-sec. as soon as it is fully charged. Since you can check the flash charge-up while looking through the viewfinder, you will not lose any shooting opportunities.

SPECIFICATION

Type	Series-circuitry computer flash.
Connection	Hotshoe and clip-on type with safety lock.
Guide Number	30 (ISO/ASA 100 m) with new batteries, 30 seconds after the neon lamp turns on. Guide number for bounce flash: 25 for main light, 6 for sublight.
Flash Duration	1/1,000 ~ 1/30,000 sec.
Angle of Coverage	Covers the view angle of a 35 mm lens (35 mm format); with wideangle adapter attached, covers the view angle of a 28 mm lens (35 mm format).
Recycle Time	9 sec. after lighting of the neon lamp with new alkaline-manganese batteries.
Light Quality	Daylight type.
Number of Flashes	150 with fresh alkaline-manganese batteries.
Light Control	Silicon photocells and thyristor circuit.
Selection of Apertures	Manual and three-step automatic apertures (yellow, red, green). Aperture setting for ISO/ASA 100: Red f/2.8. Green f/5.6. Yellow f/11
Automatic Flash Range	Red : 1.5 ~ 10.7 m (5 ~ 35 ft) Green : 1 ~ 5.3 m (3.3~18 ft) Yellow : 0.8 ~ 2.7 m (2.6- 9 ft)
Bounce Flash	Flash head tiltable 0 ~90°; when tilted, a sublight switches on and the flash is set up for twin-light bounce flashing.
Power Source	Four penlight batteries (AA size)
Film Speed	ISO/ASA 25 ~ 400
Aperture Scale	f/1.4 ~ f/32

Notice: Specifications are subject to change without notice.

NAMES OF PARTS



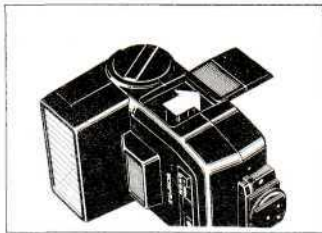
LOADING THE BATTERIES

- Battery type

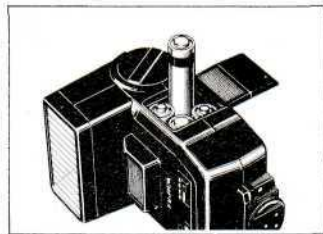
Use four penlight batteries (AA size). Alkaline-manganese batteries are recommended because of their long service life.

- Recycle time will be longer in cold weather because low temperatures will reduce battery efficiency. Try to keep the batteries warm in cold weather by carrying them in your coat pocket until they are needed.
- If the flash is not being used for a long interval, remove the batteries before putting it away because old batteries can develop leaks and damage it.

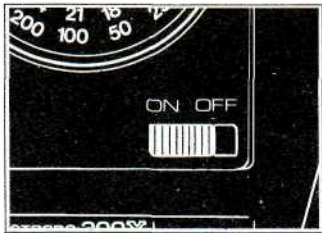
■ How to load the batteries



1. Remove the Battery Compartment Cover by pulling it out in the direction of the arrow.



2. Insert four batteries, plus (+) and minus (-) ends correctly as illustrated in the Battery Compartment, then replace the cover by sliding it in until it locks.



3. Turn on the Main Switch. If the red Flash Ready Lamp (located in the center of the Flash Guide Disk) turns on in a few seconds, the batteries are properly loaded.

4. After checking the batteries, be sure to turn off the Main Switch.

Note: If the Main Switch is left on, the batteries will be exhausted in a short time even if the flash is not discharged.

- Battery life
- On manual flash, a new set of alkaline-manganese batteries will provide about 150 flashes but it is always best to change them as soon as they start to show wear. If the recycle time lags to 30-second or more, the batteries should be considered exhausted.
- Be sure to change the four batteries all at once and make sure all four are of the same brand and are new.
- After you are through taking pictures, always turn the Main Switch off to save battery.

MOUNTING THE FLASH ON THE CAMERA



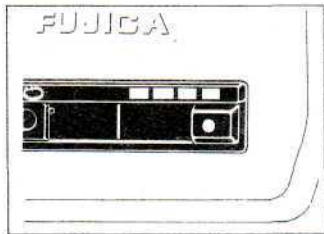
1. Turn off the Main Switch.
2. Loosen the Wheel Lock by turning it counterclockwise, grip the bottom part of the flash and clip the Strobe Foot into the camera's accessory shoe. Make sure the foot goes all the way in because the flash might not function properly if it is only part of the way in.

3. then turn the Wheel Lock clockwise to lock the flash securely in place.
3. To dismount the flash, loosen the Wheel Lock by turning it counterclockwise then grip the bottom part of the flash and slide the Strobe Foot out.

TAKING FLASH PICTURES (I)

- Setting the camera's shutter speed
1. If you are using the flash with a Fujica AX-series camera, the camera's shutter speed will automatically switch to 1/60 sec. (X-sync) as soon as it is fully charged, regardless of where the shutter speed dial has been set (except "B").
 2. If you are using it with the Fujica AZ-1, the camera's shutter speed will automatically switch to 1/60 sec. (X-sync) with the shutter speed dial set to AE as soon as it is fully charged.
 3. If you are using it with other cameras, set the camera's shutter speed to (1/60 or 1/125 sec.) (X-sync.).

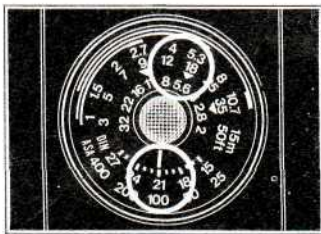
■ Setting the Strobo's Distance Selector



Set the Distance Selector on the Strobo front to either the red, green, or yellow mark. These marks represent the following shooting distances:

Red.	1.5- 10.7m (5 ~ 35 ft.)
Green.1 — 5.3m (3.3 ~ 18 ft.)
Yellow.08 - 2.7m (2.6 ~ 9 ft.)

■ Setting the film speed



Turn the Flash Guide Disk on the Strobo back and set the speed of the film you are using opposite the index mark.

Example: If you are using Fuji-color HR100, set "100" on the ISO/ASA scale opposite the index mark.

• Setting the aperture

Read off the aperture indicated on the Flash Guide Disk for the color of the mark you selected and set the lens' aperture ring accordingly.

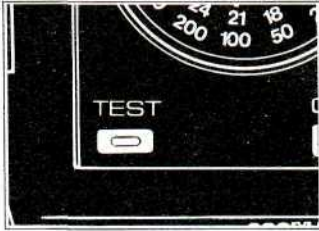
Example: With ISO/ASA 100 film, the apertures to be set for the different colors are as follows:

Red.	f/2.8
Green.	f/5.6
Yellow.	f/11

TAKING FLASH PICTURES(II)

(Bounce-light pictures)

If your subject is standing near a wall, you will get distracting shadows in your picture if you flash it from the front. In this case, rotate the flash head upward so that it is indirectly illuminated by the light reflected from the ceiling. The lighting will thus be soft and shadows can be practically controlled. This is called "bounce flash."



- Switch on the Main Switch. As soon as the Flash Ready Lamp turns on, press in the Test Button to make sure the Auto Check Lamp turns on. If it turns on, you are ready to take automatic flash pictures. The flash will automatically provide the right amount of light for correct exposure.

- If the Auto/Manual Switch is set to M, your Auto Strobe 300X will work as a manual-operation flash having a guide number of 30 (ISO/ASA100 .m). To find the correct aperture, divide the guide number by the flash-subject distance, and set the aperture ring accordingly. The guide numbers relative to the film ISO/ASA speeds are shown in the following table.

	ISO/ ASA25	ISO/ ASA50	ISO/ ASA100	ISO/ ASA200	ISO/ ASA400
	15DIN	18DIN	21 DIN	24DIN	27 DIN
m	15	21	30	42	60
ft	50	71	100	140	200

Note: If you are using bounced lighting on the manual mode, care must be taken because the guide number will become smaller.



1. Taking into account the height of the reflecting surface (ceiling, wall, etc.) and the shooting distance, choose the tilting

angle of the flash head. A practical way of bounced lighting is to tilt the flash head $60^\circ \sim 90^\circ$ so that the light reaches the subject from the ceiling. The tilting angles of the flash head depending on the shooting distance are shown below. Use this table only as a guide.

m	1	1.5	2	3	4
ft	3.3	5	6.6	10	13
Tilting Angle	90°	75° $90''$	75°	$60'$ 75°	$60''$

2. The procedure for picture-taking is the same as that for taking non-bounce-light pictures.
3. The automatic flash ranges for

bounced lighting are approximately as follows:

Red mark 1 - 4m
(3 ~ 12 ft.)

Green mark 1 - 2m
(3 ~ 6 ft.)

Do not use the yellow mark.

4. The automatic flash range will differ depending on the reflecting surface. Before shooting, always press in the Test Button to make sure the Auto Check Lamp turns on.
5. When the flash head is tilted, the Auto Strobe 300X will automatically convert into a twin flash. For bounce flash, a sublight located below the main light will fire at the same time to insure that the main subject is correctly exposed.

USING THE WIDEANGLE ADAPTER

If you are taking flash pictures with a 28mm lens, attach the Wideangle Adapter (included) to the front of the flash lamp-face. The illumination angle will thus cover the view angle of a 28 mm lens (53° vertical, 70° horizontal). Since the use of the wideangle adapter results in a loss of light, refer to the following instructions to set the exposure.

- Automatic flash range

If the Wideangle Adapter is used, the automatic flash range changes as follows:

Red mark 1.5 - 7.6m
(5 ~ 25 ft.)

Green mark 1 - 3.8m
(3.3 ~ 12.5 ft.)

Yellow mark . . . 0.7 - 2 m
(2.3 ~ 6.6 ft.)

- Manual flash exposure

In this case, the aperture should be opened by one step from that obtained by dividing the guide number by the flash-subject distance.

Example: If the shooting distance is 5 m, the aperture to use is f/5.6 without wideangle adapter because $30 \div 5 = 6$. With it attached, however, open the aperture by one step and use f/4.

OFF-CAMERA FLASH OPERATION

It is possible to use Auto Strobe 300X away from the camera by means of the PC synchro cord supplied. When employed in this way, always ensure that the total flash-to-subject distance is taken into account, or under-exposure will result.

Also ensure that the flash unit is held "square" to the camera, i.e. do not allow the flash to face away from a reflecting surface.



FUJI PHOTO FILM CO., LTD.

26-30, Nishiazabu 2-chome, Minato-ku, Tokyo 106, Japan.

<Fuji Film Abroad>

In North America

FUJI PHOTO FILM U.S.A., INC.

350 Fifth Ave., New York, N.Y. 10118, U.S.A.

FUJI PHOTO FILM CANADA INC.

743 Renaud Ave., Dorval, P.Q- Canada H9P 2N1

FUJI PHOTO FILM HAWAII, INC.

Pacific International Bldg., Suite 304,

677 Ala Moana Blvd., Honolulu, Hawaii 96813, U.S.A.

In Europe

FUJI PHOTO FILM (EUROPE) G.m.b.H.

4 Dijsseldorf 1, Postfach 3204, Berliner Allee 8, West Germany

FUJI PHOTO FILM (U.K.) LTD.

99 Baker Street, London, W1M 1FB, England

In South America

FUJI PHOTO FILM DO BRASIL LTDA.

Caixa Postal 9959, Rua Major diogo, 128, CEP 01, 324, Sao Paulo, Brasil

In Asia

FUJI PHOTO FILM CO., LTD., HONG KONG OFFICE

15th Floor, Melbourne Plaza, No.33. Queens Road, Central, Hong Kong

FUJI PHOTO FILM CO., LTD., SINGAPORE OFFICE

Unit 537, 5th Floor, Plaza Singapura, 68, Orchard Road, Singapore, 9

FUJI PHOTO FILM CO., LTD., BANGKOK OFFICE

K 8 Y Bldg., 5th Floor. 16 Surasak Road, Bangkok, Thailand

FUJI PHOTO FILM CO., LTD., TAIPEI OFFICE

Rm. 501 Hung Chong Bldg., No. 20, Chiling Road, Taipei, Taiwan

FUJI PHOTO FILM CO., LTD., SEOUL OFFICE

Mee Wha Building, 30-1, Mukjong-dong, Chung-ku, Seoul, Korea

In Oceania

FUJI PHOTO FILM CO., LTD., MANILA OFFICE

16th Floor, Citibank Center Bldg., Paseo de Roxas, Makati, Metro Manila, Philippines

Printed in Japan

FUJI PHOTO FILM CO., LTD., SYDNEY OFFICE

Hanimex Bldg. 10, Pittwater Road, Bondi Beach, N.S.W. 2009, Australia

工デ-580604-TA-1-11③

Free Manuals Download Website

<http://myh66.com>

<http://usermanuals.us>

<http://www.somanuals.com>

<http://www.4manuals.cc>

<http://www.manual-lib.com>

<http://www.404manual.com>

<http://www.luxmanual.com>

<http://aubethermostatmanual.com>

Golf course search by state

<http://golfingnear.com>

Email search by domain

<http://emailbydomain.com>

Auto manuals search

<http://auto.somanuals.com>

TV manuals search

<http://tv.somanuals.com>