

BE INTERESTING™ **PENTAX**

PENTAX Imaging Company  
600 12th Street, Ste 300  
Golden, Colorado 80401  
USA 1-800-877-0155

Visit us at:  
pentaximaging.com  
pentaxphotogallery.com  
pentaxsportoptics.com

## CAMERA SPECIFICATIONS

<b>Type</b>	Type: Interline interface CCD with primary color filter and integrated Shake/Dust Reduction sensor movement system Size: 23.5 x 15.7mm Color depth: 8 bits/channel JPG, 12 bits/channel RAW Effective pixels: 10.2 MP Total pixels: 10.75 MP Recorded resolutions: 10M (3872x2592), 6M (3008x2000), 2M (1824x1216) Quality levels: *** (Best), ** (Better), * (Good) Dust Removal: Image sensor movement combined with SP coating, Dust Alert available
<b>Lens Mount</b>	Type/construction: PENTAX KAF2 bayonet stainless steel mount Usable lenses: PENTAX KAF3, KAF2, KAF, and KA (K mount, 35mm screwmount, 645/67 med format usable w/adaptor and/or restrictions) SDM function: YES Power zoom function: n/a
<b>Focus System</b>	Type: TTL phase-matching 5 point wide autofocus system (SAFOX) Focus modes: AF Auto, AF Single (w/ focus lock), AF Continuous (available in Action mode, including Auto Picture Action, Kids, Pet, Stage Lighting, and Night Snap modes, P/A/S/M/B/Sv) Manual Focus point adjustment: Wide, Spot AF assist: YES, via built-in flash
<b>Viewfinder</b>	Type: Penta-Mirror Coverage (field of view): Approx. 98% Magnification: Approx. 0.85X (w/50mm f/1.4 at infinity) Standard focusing screen: Natural-Bright-Matte II Diopter adjustment: -2.5 to 1.5 Depth of field preview: Digital (available as a custom function linked to Help Button)
<b>LCD Monitor</b>	Type: 2.7 inch TFT color LCD monitor, adjustable brightness Resolution: 230,000 dots Wide-angle viewable: YES
<b>Built-In Flash</b>	Type: Retractable P-TTL auto/manual popup flash Guide number: 11 (100m) Coverage: 28mm wide angle (equivalent to 35mm) Flash modes: On, off, recycle, wireless Flash exposure compensation: -2 to 1 EV in 1/2 steps
<b>External Flash</b>	Type: Hot shoe (P-TTL, high-speed sync available), wireless with PENTAX dedicated flash Synchronization speed: 1/180s
<b>Storage Media</b>	Internal memory: n/a Removable memory: SD, SDHC
<b>Interfaces</b>	Ports: USB 2.0 hi-speed, video out Video out: NTSC, PAL Printer interfaces: PictBridge
<b>Power Supply</b>	Power source: 4 AA (lithium, NiMH, alkaline) Recordable images: Approx. 1650 normal or 1000 with 50% flash use (lithium) Playback time: Approx. 750 (lithium) AC adapter available: YES (optional)

<b>Physical Specifications</b>	Body dimensions (W x H x D): 4.8 inch x 3.6 inch x 2.7 inch Body weight Without battery or removable memory: 18.5 oz Loaded and ready: 20.8 oz (lithium) Construction material(s): Fiber-reinforced plastic polymer covers around a rugged stainless steel chassis Operating temperature: 32-104°F
<b>Language Support</b>	English, French, German, Spanish, Swedish, Dutch, Italian, Russian, Portuguese, Danish, Finnish, Polish, Czech, Hungarian, Turkish, Greek, Japanese, Korean, Traditional/Simplified Chinese

## FLASH SPECIFICATIONS

<b>Type</b>	Clip-on-type P-TTL auto flash
<b>Flash Control</b>	TTL-series-control auto flash, Manual flash
<b>Flash Modes</b>	P-TTL (TTL corrective auto flash, contrast-control auto flash) TTL (TTL auto flash) FULL (manual flash)
<b>Discharge Angles</b>	70° horizontally (78° with wide-angle panel) 53° vertically (60° with wide-angle panel)
<b>Focal-length Coverage</b>	28mm equivalent (24mm equivalent with wide-angle panel)
<b>Guide Number</b>	20 max. (at ISO100/m), Manual setting : Full 28 max. (at ISO200/m), Manual setting : Full
<b>Flash Range</b>	2.3-11.8 feet (GN20, ISO100, f/5.6)
<b>Flash Interval and Battery Life</b>	Approx. 4-second interval, approx. 300 full-level discharges (with alkaline batteries) Approx. 4-second interval, approx. 450 full-level discharges (with lithium batteries) Approx. 4-second interval, approx. 400 full-level discharges (with Ni-MH batteries)
<b>Color Temperature Balance</b>	Daylight
<b>Synchronization Modes</b>	Leading-shutter-curtain sync
<b>Other Functions</b>	Auto power-off, Test discharge Flash exposure compensation (-0.5EV, -1EV)
<b>Power Source</b>	4 AA batteries (lithium, NiMH, alkaline)
<b>Dimensions (H x W x D)</b>	2.7 inch x 3.3 inch x 3.7 inch
<b>Weight</b>	190g (6.8oz) without batteries

## IMAGE CAPTURE

<b>Image Stabilization</b>	Type: Body-based, sensor shift Shake Reduction (4 stops max.)
<b>Metering System</b>	Type: TTL open aperture, 16 segment metering Sensitivity range: EV 0-21 (ISO 100, 50mm f/1.4) Multi-segments: YES, 16 segments Center weighted: YES Spot: YES Exposure compensation: +/- 2 EV (1/2 or 1/3 steps) Exposure lock: YES (available as a custom function linked to focus lock) Exposure bracketing: YES, 3 frames, up to +/- 1.5 (1/2 steps) or +/- 1.0 (1/3 steps)
<b>ISO Sensitivity</b>	Auto: 100-3200 ISO (1, 1/2, 1/3 EV steps), up to 1600 ISO in Bulb mode Manual: 100-3200 ISO (1, 1/2, 1/3 EV steps), up to 1600 ISO in Bulb mode
<b>White Balance*</b>	Auto preset modes: Auto, Daylight, Shade, Cloudy, Fluorescent (D, N, W), Tungsten, Flash Manual mode(s): YES *WB fine adjustment available
<b>Shutter</b>	Type: Electronically controlled, vertical run, focal plane shutter Shutter speed: 1/4000 to 30 sec, Bulb available
<b>Capture Modes</b>	Mode selection: Auto Picture (Portrait, Night Portrait, Landscape, Macro, Action), Picture (Portrait, Landscape, Macro, Action, Night Scene Portrait, Standard Flash Off), Scene (Night Scene, Surf & Snow, Food, Sunset, Kids, Pet, Candlelight, Museum, Stage Lighting [2M JPG], Night Snap [2M JPG]), Program, Sensitivity Priority, Shutter Priority, Aperture Priority, Metered Manual, Bulb (available in Metered Manual) Green simplified mode available: n/a P/A/S/M/B/S: P, A, S, M (extended modes include Sv, Bulb available in Metered Manual) Date stamp: n/a Digital filters (capture): Toy Camera, High Contrast, Soft, Starburst, Retro, Color Extract (6). Custom Image Modes includes Bright, Natural, Portrait, Landscape, Vibrant, and Monochrome modes. Color Custom Image Modes include gamut radar and fine adjustment for saturation, hue, contrast, and sharpness. Monochrome Custom Image Mode includes adjustment for film filter effects (green, yellow, orange, red, magenta, blue, cyan, infrared), toning (sepia warm/cool), contrast, and sharpness (regular and fine adj. scales). Data record: Folder Name (standard, date)
<b>Drive Modes</b>	Mode selection: Single, Continuous (Hi, Lo), Self-Timer (12s, 2s), Remote (0s, 3s), Auto Bracket Continuous FPS: Approx. 3.5 FPS max (5 JPG and Continuous Hi, 4 RAW) Approx. 1.1 FPS (unlimited JPG and Continuous Lo, 7 RAW) Self-timer: YES (12s, 2s) Remote control: YES, infrared (0s, 3s)
<b>Playback Modes</b>	Mode selection: One shot, index (4, 9, or 16 thumbnails, select & delete available), magnification (quick-zoom available), image comparison, image rotation, folder view, calendar, slideshow, histogram, bright/dark indication, resize, trimming, protect, DPOF, digital filter, RAW to JPG, Index Magnification: Up to 16X, scrollable Digital filters (playback): Toy Camera, High Contrast, Soft (6), Starburst, Retro, Color Extract, Illustration (Pastel, Watercolor), HDR (3), B&W, Sepia, Color (18), Stim (+/- 8), Brightness (+/- 8), Custom
<b>File Formats</b>	Still: RAW PEF/DNG, JPG (EXIF 2.21), DCF 2.0 (design rule for camera file system), DPOF, Print Image Matching III
<b>Custom Functions</b>	Functions available: 22

File Storage (Based on 1GB Memory)			
JPG	***	**	*
10M (3872x2592)	231	343	586
6M (3008x2000)	387	570	974
2M (1824x1216)	902	1549	2627

RAW			
10M (3872x2592)	58		

<b>Computer System Requirements</b>	For device connectivity. Bundled software requirements may vary. Windows: Windows XP/Vista, USB port Mac: Mac OS-X 10.3 or later, USB 2.0 port
-------------------------------------	------------------------------------------------------------------------------------------------------------------------------------------------------

<b>Kit Inclusions</b>	K2000, DA L 18-55 lens, AF200FG flash, USB cable (USB-7 strap), O-STR4, hot shoe cover, FK, eyecup FG, body mount cover, software CD-ROM S-SW84, AA lithium batteries (4)
-----------------------	---------------------------------------------------------------------------------------------------------------------------------------------------------------------------

<b>Optional Accessories</b>	AC Adapter Kit K-AC84U, Video Cable (VC28), Remote Control R-Finder Cap for ME, Magnifying Eyepiece O-ME53 (1.2x), DSLR Gadget Bag, DSLR Sling Bag, DSLR Leather Hand Strap
-----------------------------	-----------------------------------------------------------------------------------------------------------------------------------------------------------------------------



PENTAX **K2000**

DSLR CAMERA SYSTEM

BE INTERESTING.

**PENTAX**

PENT



PENTAX, K2000 and smc PENTAX are trademarks of HOYA CORPORATION. PENTAX PHOTO Browser, PENTAX PHOTO Laboratory and SDM are trademarks of HOYA CORPORATION. © 2008 HOYA CORPORATION. All rights reserved. SDHC logo is a trademark. This product supports PRINT Image Matching III. PRINT Image Matching-enabled digital still cameras, printers and software help photographers to produce images more faithful to their intentions. Some functions are not available on printers that are not PRINT Image Matching III compliant. Copyright 2001 Seiko Epson Corporation. All rights reserved. PRINT Image Matching is a trademark of Seiko Epson Corporation. The PRINT Image Matching logo is a trademark of Seiko Epson Corporation. This product includes DNG technology under license by Adobe Systems Incorporated. The DNG logo is either a registered trademark or trademark of Adobe Systems Incorporated in the United States and/or other countries. Macintosh and Mac OS are trademarks of Apple Inc., registered in the U.S. and other countries. Microsoft and Windows are registered trademarks of Microsoft Corporation in the United States and other countries. Windows Vista is a registered trademark of Microsoft Corporation in the United States and/or other countries. All other brands or product names are trademarks or registered trademarks of their respective companies. Designs and specifications are subject to change without notice. LCD images are simulated. It is strongly recommended that you read the entire operation manual before operating these digital cameras.

# K2000

The PENTAX K2000's compact design and ease-of-use make it the perfect choice for anyone looking to make the transition to digital SLR photography. One of the smallest DSLR cameras on the market, the K2000's ergonomic design makes for easy one-handed operation. It also features a wide range of advanced technologies, including a sophisticated Shake Reduction system and the PENTAX-developed Auto Picture mode. Powerful learning tools like a built-in function guide and a dedicated **Help Button** means that in addition to producing better prints, the K2000 will also help make you a better photographer.



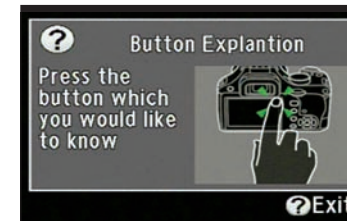
(All cameras shown full size)

**High resolution 10.2 megapixel CCD sensor** produces crisp, high resolution images. It lets you see the smallest details, crop to perfect your composition, and print enlargements without taking up all the free space on your hard drive or memory card.



**Up to 3.5 frames per second capture rate** means the K2000 is able to capture fast-moving action. Whether you use it at a fast-paced sporting event or for chasing a speeding toddler, you'll be better able to get the perfect shot.

**Large 2.7 inch LCD screen** is the perfect blend of size and resolution for ideal picture review. The screen's brightness is adjustable for different lighting conditions, and the screen is viewable from a wide angle—up to 170°—so everyone in the group can gather around to review your images.

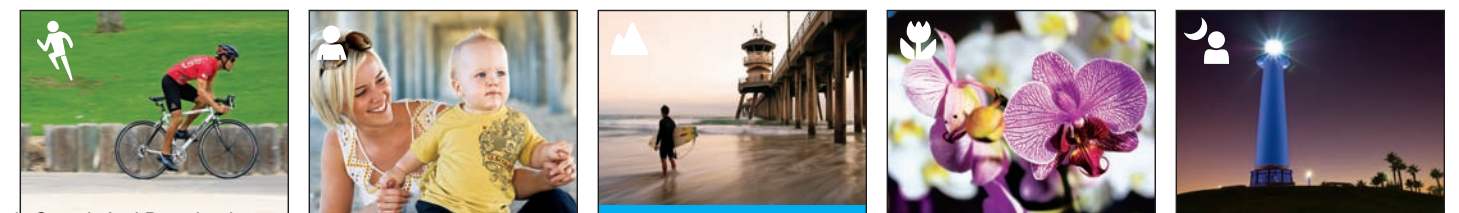


**Dedicated, reprogrammable Help Button** is like having a built-in, always at the ready user's guide. It explains the current camera function and setting, guiding you to learn more about photography. It's the ideal tool for helping to ease the transition from point-and-shoot to DSLR photography.

**PENTAX Shake Reduction** system helps deliver sharp, blur-free images. Utilizing a free-floating image sensor, the K2000 compensates for the tiny movements your hand makes when taking a picture. Shutter speeds can be 2.5 to 4 stops lower and still capture sharp images. It is particularly helpful in **SR Shake Reduction** low light situations, such as when shooting indoors without a flash, or outdoors at dawn, dusk or nighttime. And it works with every PENTAX SLR lens ever manufactured.



**Auto Picture mode** analyzes what you're taking a picture of, then automatically sets the proper shooting mode. Don't worry if your image is an action shot, portrait, landscape, macro shot, or a night scene. Simply set it to Auto Picture and start shooting. As you learn more about photography, you can take more control and set the picture modes yourself.



## Free Manuals Download Website

<http://myh66.com>

<http://usermanuals.us>

<http://www.somanuals.com>

<http://www.4manuals.cc>

<http://www.manual-lib.com>

<http://www.404manual.com>

<http://www.luxmanual.com>

<http://aubethermostatmanual.com>

Golf course search by state

<http://golfingnear.com>

Email search by domain

<http://emailbydomain.com>

Auto manuals search

<http://auto.somanuals.com>

TV manuals search

<http://tv.somanuals.com>