

# KEG COUPLERS



No. 26000F

## Perlick Smart Couplers

- ✓ *Keeps beer loss to a minimum*
- ✓ *Speeds service on keg changeovers*
- ✓ *Minimizes overfoaming*

The patented Perlick Smart Coupler\* combines an integral Empty Keg Sensor with a quality keg coupler to eliminate the need for wall-mounted FOB devices. It senses when a keg is empty and shuts off the beer flow, yet leaves the line fully charged with beer. This prevents gas from entering an empty line causing excessive foaming when tapping a fresh keg. Packed 25 per case. Weight: 1 lb. 8 oz. each

Part No.	Description
26000F*	For Domestic Kegs
27500F	For Imported Kegs

\*U.S. Patent #5,630, 441



No. 43739

## Universal Empty Keg Sensor

Controls the amount of beer loss by closing off the beer flow when a keg empties. Mounts directly to the keg coupler for dual probe or imported kegs.

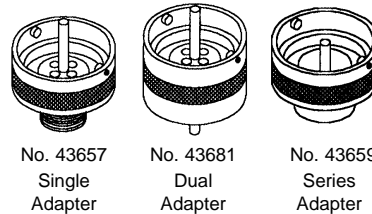
Part No.	Description
43739	Universal empty keg sensor



## Retrofit Empty Keg Sensor

Existing Perlick single valve keg couplers can be retrofitted to function as Smart Couplers. Simply replace the probe with Perlick's No. 40125 empty keg sensor. Bulk-packed. Weight: 8 oz. each

Part No.	Description
40125	For domestic kegs
40119	For imported kegs



## Cleaning Adapters

Single and dual cleaning adapters are uniquely designed to operate when Perlick's keg coupler is in the untapped (handle up) position,

allowing the system to be cleaned from the faucet through the keg coupler. Prevents solution from entering the CO<sub>2</sub> line, eliminating beer contamination when retaping. Brass nickel plated (Bulk Packed)

Part No.	Description
43657*	Single/domestic kegs
43681*	Dual/domestic kegs
43659*	Series/domestic kegs
43699	Single/imported kegs
43702	Dual/imported kegs

\*Note: These adapters are designed to be used with all Perlick single valve couplers and most competitor's couplers. Must be used with Smart Couplers when cleaning lines from the faucet through the Smart Coupler.

## Lo-Boy Coupler for Single Valve Domestic Kegs

Uniquely constructed to tap a keg in limited space. Just push down and twist to tap.



Part No.	Description
40030	Lo-Bo

# KEG COUPLERS

## G-Series Keg Couplers for Single Valve Domestic and Imported Kegs

Provided with non-rotating probe in stainless steel or nickel-plated brass. Enlarged bore and wider tip opening produces less turbulence and restriction which allows for reduced line pressure and CO2 breakout. Nickel-plated, forged brass body with three internally mounted seals. Floating ball check valve equalizes line pressure. Relief valve vents over-pressurized keg. For bent probe design, attach #2036SS elbow to external thread on keg couplers. Optional Locking Shield prevents accidental untapping. Individually packed, 25 per case. Weight 24 oz. each.



### For Domestic Kegs

Part No.	Description
26000G	Probe, brass, less lock
26000GS	Probe, S. St., less lock
26000G1	Probe, brass, with lock
26000GS1	Probe, S. St., with lock

### For Imported Kegs

Part No.	Description
27500G	Probe, brass, less lock
27500GS	Probe, S. St., less lock
27500G1	Probe, brass, with lock
27500GS1	Probe, S. St., with lock

### Elbow for Bent Probe Couplers

Part No.	Description
2036SS	S. St. elbow coupler

### Lug Straightener for Single Valve Kegs

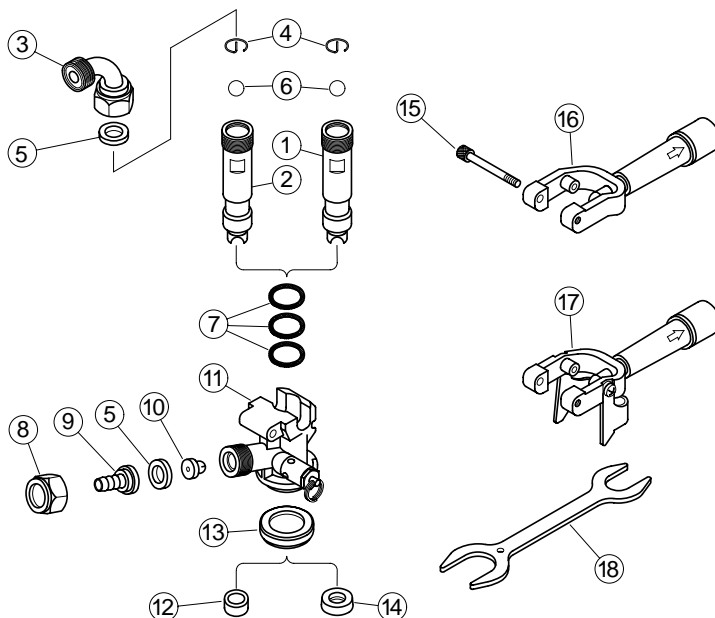
Part No.	Description
32695	Lug straightener

## Keg Coupler Replacement Parts

Item	Part No.	Description
1	40174-1	Probe - brass
1	40174-1SS	Probe - stainless steel
2	40157-1*	Probe, brass, Imported kegs
2	40157-1SS*	Probe, s. st., imported kegs
3	2036SS	Elbow for bent probe, s. st.
4	43641-1	Ball retaining spring
5	157R2P	Washer
6	31080-2P	Ball check
7	31089-2P	O-ring (3 per ass'y.)
8	2026	Hex nut
9	2068-1	Tailpiece
10	23682-2P	Check Valve
11	43061	Coupler body
12	31479-1*	Probe washer, imported
13	31088-2P	Bottom seal washer
14	31087-2P	Probe washer, domestic
15	31084-1	Retaining screw
16	43001A	Yoke less lock-domestic
17	43002A	Yoke with lock- domestic
18	32474-1	Wrench

\*Replacement part used exclusively for Keg Couplers for Imported Kegs.

### Keg Coupler Replacement Parts



# KEG COUPLERS

## D-Series Keg Couplers for Single Valve Domestic and Imported Kegs

Exclusive two-piece rotating probe helps prevent twisting beer lines. Nickel-plated, forged brass body with three internally mounted seals. Floating ball check valve equalizes line pressure. Relief valve vents over-pressurized kegs. Optional Locking Shield prevents accidental untaping. Converts for domestic or imported kegs by changing probe tip. Individually packed, 25 per case. Weight 24 oz. each.



No. 26000D



No. 26000D1



No. 32695

### For Domestic Kegs

Part No.	Description
26000D	Probe, less lock
26000D1	Probe, with lock

### For Imported Kegs

Part No.	Description
27500D	Probe, less lock
27500D1	Probe, with lock

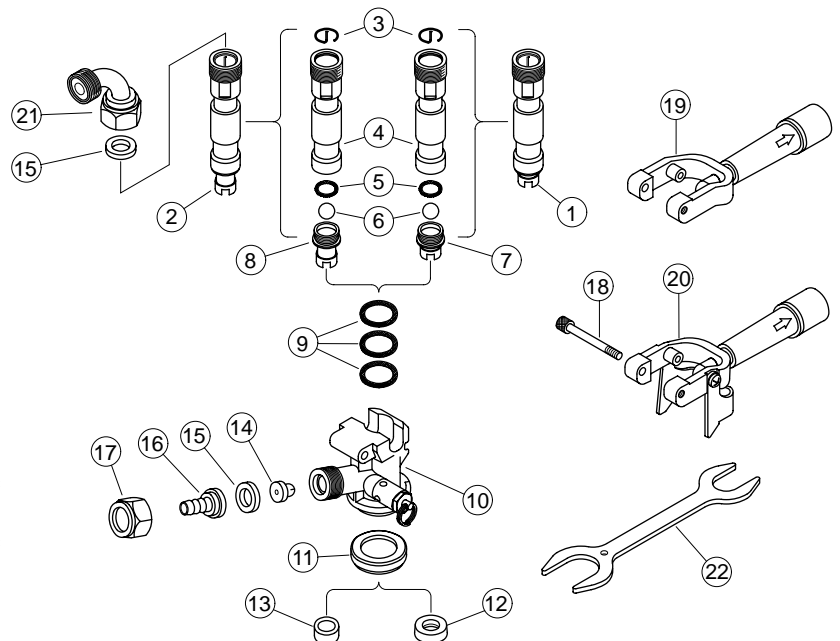
## Lug Straightener for Single Valve Kegs

Part No.	Description
32695	Lug straightener

## Keg Coupler Replacement Parts

Item	Part No.	Description
1	32499	Probe assembly, domestic kegs
2	32610*	Probe assembly, imported kegs
3	43641-1	Ball retaining spring
4	32461-1A	Probe center stem
5	C14316	Buna-N O-ring
6	31080-2P	Ball check, Poly
7	31079-1	Tip, domestic kegs
8	31478-1*	Tip, Imported kegs
9	31089-2P	O-ring (3 per assembly)
10	43061	Coupler body
11	31088-2P	Bottom seal washer
12	31087-2P	Probe washer, domestic
13	31479-1*	Probe washer, imported
14	23682-2P	Check valve
15	157R2P	Washer
16	2068-1	Tailpiece
17	2026	Nut
18	31084-1	Retaining screw
19	43001A	Yoke less lock, domestic
19	43090A*	Yoke less lock, imported
20	43002A	Yoke with lock, domestic
20	43091A*	Yoke with lock, imported
21	2036SS	Elbow for bent probe
22	32474-1	Wrench

### Keg Coupler Replacement Parts



\*Replacement part used exclusively for Keg Couplers for Imported Kegs.

## Free Manuals Download Website

<http://myh66.com>

<http://usermanuals.us>

<http://www.somanuals.com>

<http://www.4manuals.cc>

<http://www.manual-lib.com>

<http://www.404manual.com>

<http://www.luxmanual.com>

<http://aubethermostatmanual.com>

Golf course search by state

<http://golfingnear.com>

Email search by domain

<http://emailbydomain.com>

Auto manuals search

<http://auto.somanuals.com>

TV manuals search

<http://tv.somanuals.com>