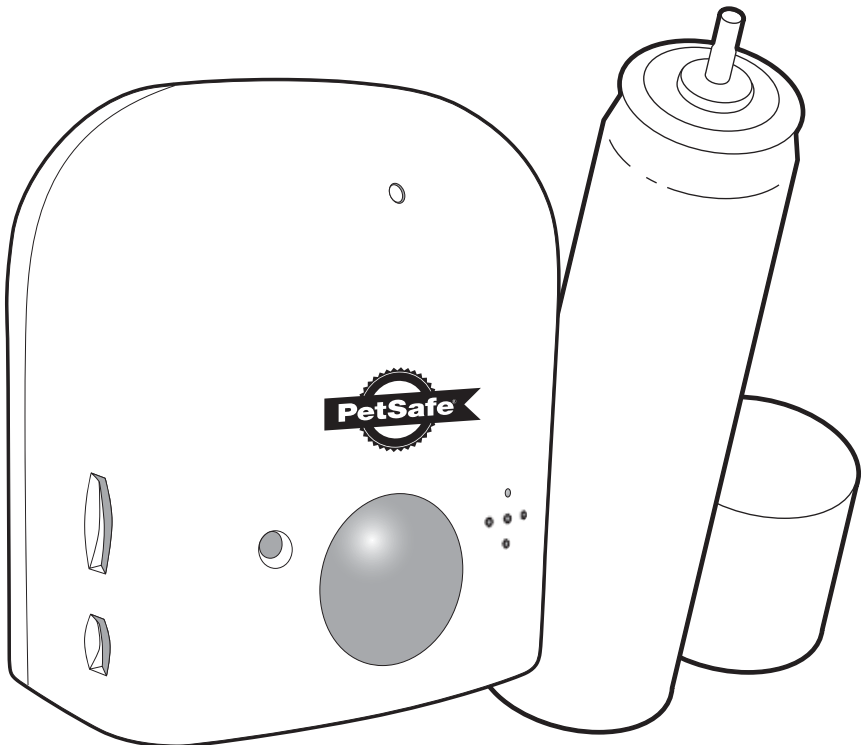


PetSafe® Pawz Away™ Spray Deterrent

Operating and Training Guide

Please read this entire guide before beginning.



PDT00-11312

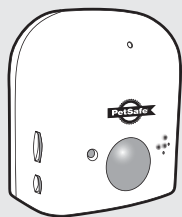
Thank you for choosing PetSafe®, the best selling brand of electronic training solutions in the world. Our mission is to be the most trusted brand in the pet ownership experience. We want to ensure your pet's safety by providing you with the tools and techniques to successfully train your pet. If you have any questions, please contact the Customer Care Center at 1-800-732-2677 or visit our website at www.petsafe.net.

To get the most protection out of your warranty, please register your product within 30 days at www.petsafe.net. By registering and keeping your receipt, you will enjoy the product's full warranty and should you ever need to call the Customer Care Center, we will be able to help you faster. Most importantly, PetSafe® will never give or sell your valuable information to anyone. Complete warranty information is available online at www.petsafe.net.

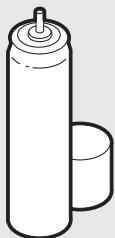
Table of Contents

Components	3
Features.....	3
How the Pawz Away™ Spray Deterrent Works	3
Key Definitions.....	4
Operating and Training Guide.....	5
To Insert and Remove the Battery.....	5
To Fill and Refill the Unscented Spray	5
Choose from Three Training Options	6
Controls	6
To Test the PetSafe® Pawz Away™ Spray Deterrent	7
Choosing a Location	7
Care & Cleaning	8
Accessories	8
Frequently Asked Questions	8
Troubleshooting.....	8
Terms of Use and Limitation of Liability	9
Customer Care International	9
Caution	9
FCC.....	10

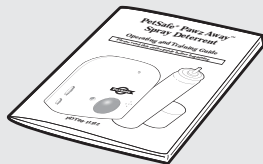
Components



**Pawz Away™
Spray Deterrent**



**Unscented Spray
(PAC19-11883)**



**Operating and
Training Guide**

Features

- Indoor training for dogs and cats
- 3 easy-to-use training options (Tone+Spray; Tone Only; Spray Only)
- Detection range adjustable from 18 – 36 inches
- Unobtrusive and versatile; just 2.75 inches tall for use in any room
- Unscented spray is safe and effective
- Good/low battery indicator

Prevent your pet from:

- Entering a room
- Jumping on furniture
- Counter surfing
- Tipping garbage cans

How the Pawz Away™ Spray Deterrent Works

PetSafe® Pawz Away™ Spray Deterrent monitors for movement up to 3 feet away. When your pet is detected, the Pawz Away™ Spray Deterrent sends a quick, safe spray that startles your pet. Your pet quickly learns to avoid areas that are off-limits. It is effective for both dogs and cats of all sizes.

The PetSafe® Pawz Away™ Spray Deterrent offers three options to discourage your pet from designated areas: **Tone+Spray**; **Tone Only** (without Spray) and **Spray Only**. The spray is odorless, safe and humane; however it is a sufficient stimulus to deter pets from jumping on countertops, digging in trash or entering restricted areas.

The PetSafe® Pawz Away™ Spray Deterrent has a small (only 2.75 inches high), innovative design that can sit, hang or be placed most anywhere. You should get about 80-100 sprays between refills.

Important

- **Not for use by children.**
- **The Pawz Away™ Spray Deterrent is intended for use only with dogs and cats. Never attempt to use it for any purpose not described in this manual.**
- **For use indoors only.**

Key Definitions

Pawz Away™ Spray Deterrent: Train your pet to avoid certain areas.

4-Function Switch: Choose between training options, or turn the unit off.

Motion Sensor: Detects motion from the pet.

Refill Port: Used to refill the spray.

Spray Nozzle: Emits the spray. The spray travels approximately 12 inches from the unit, and 12 inches upward.

Hi/Low Switch: Adjust range to either 18 or 36 inches.

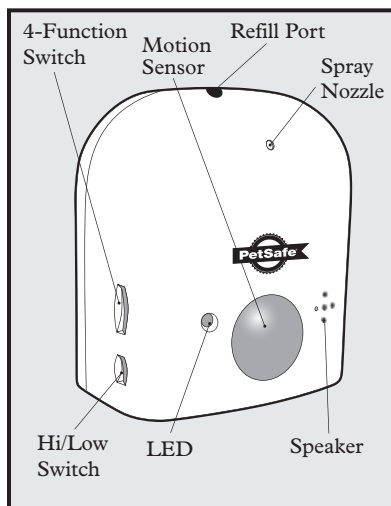
LED: Shows green for good battery; red for low battery; amber for low spray.

Speaker: Delivers the audible tone.

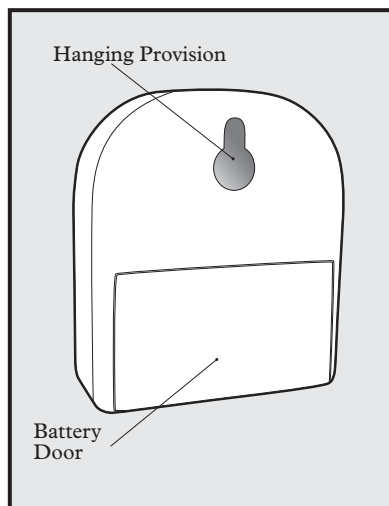
Hanging Provision: Used to hang or mount the unit.

Battery Door: Allows access to the 9-volt battery (not included).

Front



Back



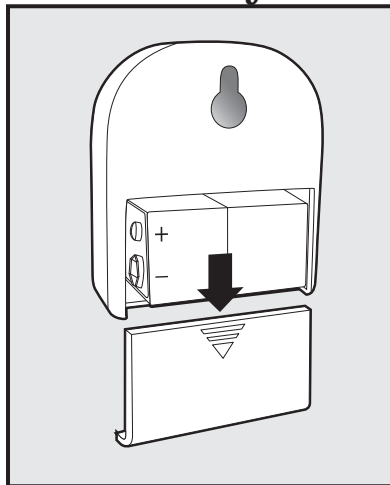
Operating and Training Guide

Step 1 To Insert and Remove the Battery

- The PetSafe® Pawz Away™ Spray Deterrent requires a replaceable 9-volt battery (not included).
- The battery door is located on the back of the unit. Slide the battery door open.
- Insert the 9-volt battery with the positive side oriented as shown.
- Replace the battery door by positioning the top edge, and snap the bottom of the battery door back into place.

Battery Life

Average battery life is 2-3 months, depending on how often the unit activates. To conserve battery life, turn to the "off" position while the Pawz Away™ Spray Deterrent is not in use.



Step 2 To Fill and Refill the Unscented Spray

- Turn the unit off.
- Hold the Unscented Spray can upright and firmly press the nozzle down into the Refill Port. Hold for 15 seconds and remove.
Note: If spray leaks out, you may need to press harder to complete the seal.
- Reset the low spray indicator.
 - From the Off position, move switch to Tone+Spray.
 - LED will flash green, then red, then amber.
 - While LED is amber, immediately move the switch to Off.
 - Wait 15 seconds with unit Off, then switch to desired training option.
 - LED will flash amber 5 times to indicate the spray counter has been reset, and will start normal operation.

Note: Do not puncture or incinerate the spray deterrent or the refill canister. Do not expose to extreme heat or store at temperatures above 120° F.

Step 3 Choose from Three Training Options

The PetSafe® Pawz Away™ Spray Deterrent offers three training options designed to shorten training and promote good behavior. Options include **Tone+Spray, Tone Only and Spray Only.**

Tone+Spray: The Pawz Away™ Spray Deterrent emits a brief tone, followed by an immediate spray when your pet enters the restricted area. Most pets learn very quickly to avoid the area where the Pawz Away™ Spray Deterrent is located. After some initial training with Tone+Spray, you may elect to switch to the Tone Only mode.

Tone Only: With Tone+Spray mode, described above, the pet learns the spray follows the tone. After a few encounters you may choose the Tone Only option (that is, tone without spray). The tone activates when the pet steps into the restricted area but there will be no spray. Pets will usually respond to the Tone warning and avoid the off-limits area.

Spray Only: There may be times when you prefer to leave the spray on without the tone; for instance, when you are sleeping. Spray Only sends immediate correction when your pet steps into the restricted area without sending the warning tone.

Step 4 Controls

There are two switches located on the side of the unit. The top switch is used to choose between the three training options, and turn off the unit.

Switch	Function
Position 1	Off
Position 2	On/Tone+Spray
Position 3	On/Tone Only
Position 4	On/Spray Only

Adjusting the Range

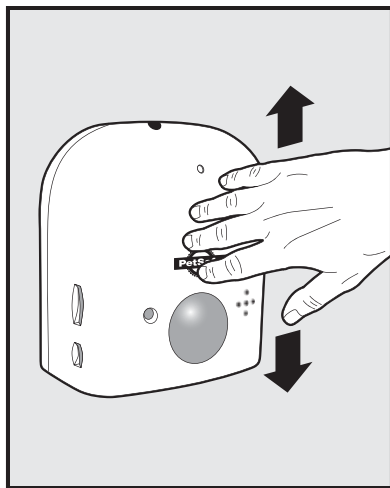
The second switch, located below the function switch, is used to adjust the range. “Hi” will detect the pet up to 36 inches away; “Low” will detect the pet up to 18 inches away.

LED Colors

Green LED	Flashes every 5 seconds	Unit is On
Red LED	Flashes 3 times every 5 seconds	Low battery; replace soon
Amber LED	Solid	Low spray, refill as soon as possible

To Test the PetSafe® Pawz Away™ Spray Deterrent

Ensure the battery has been installed and the unit is set to Tone+Spray, Tone Only or Spray Only. Move your hand in front of the motion detector. The unit will detect your presence and activate accordingly.



Choosing a Location

1. Place the Pawz Away™ Spray Deterrent in a location you want your pet to avoid (i.e., in a doorway; on the counter, window sills or on your trash can)
2. Slide the function switch to the desired training position.
3. Adjust the detection range by sliding the Hi/Low Switch accordingly.

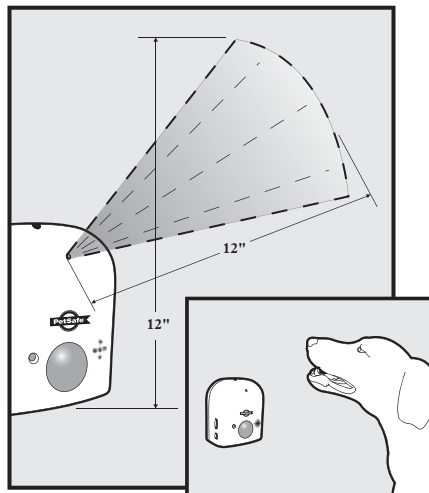
The Pawz Away™ Spray Deterrent is Small and Versatile

Stand-alone: Place it in front of house plants or on countertops

Hang it: Use the keyhole slot on the back to mount on a wall or in a doorway

PetSafe® also recommends Scotch® Mounting Squares, double-sided foam tape. Just peel and stick to the back of the Pawz Away™ unit, and your wall. Great for use on walls, windows, cabinets and other smooth dry surfaces.

Note: The spray emits approximately 12 inches outward and 12 inches upward. It is recommended that the unit be positioned at a level that would be below your pet's head.



Care & Cleaning

Turn off the Pawz Away™ Spray Deterrent. Use a cloth and mild soapy water to wipe the unit, paying close attention to cleaning the spray nozzle. Do not fully submerge the Pawz Away™ Spray Deterrent in water. It is recommended that the unit be cleaned about every other month to prevent clogging. The need for cleaning will depend on usage.

Accessories

To purchase additional accessories for your PetSafe® Pawz Away™ Spray Deterrent, please visit our website at www.petsafe.net or contact the Customer Care Center.

Component	Part Number
Battery Door	RFA-375
Pawz Away™ Spray Deterrent	RFA-364
Unscented Refill	PAC19-11883
Lemon Refill	RFA-64-11
9v Battery	PAC11-12067

Frequently Asked Questions

Will the Pawz Away™ Spray Deterrent work for my dogs or cats?	• The Pawz Away™ Spray Deterrent is safe and effective for all breeds and sizes of dogs and cats.
Is the spray safe and humane?	• While the spray is unpleasant, it is harmless to your pet.

Troubleshooting

The Pawz Away™ Spray Deterrent does not spray.	<ul style="list-style-type: none">• Ensure that the battery is properly installed.• Replace the battery.• Clean the spray nozzle.• Refill the Unscented Spray.• If the Pawz Away™ Spray Deterrent still does not respond, contact the Customer Care Center.
When I try to refill the Unscented Spray, the spray leaks out around the Spray Nozzle.	<ul style="list-style-type: none">• Place the Pawz Away™ Spray Deterrent on a hard surface, such as a countertop.• Hold the Unscented Spray can upright. If it is held at an angle, it will not create a good seal.• Press firmly on the Unscented Spray can to create a good seal.• If the spray continues to leak, contact the Customer Care Center.
The Spray Nozzle has a build up of Unscented Spray around the nozzle.	<ul style="list-style-type: none">• Gently clean around the spray nozzle with a warm soapy cloth.

Terms of Use and Limitation of Liability

1. Terms of Use

This Product is offered to you conditioned upon your acceptance without modification of the terms, conditions and notices contained herein. Usage of this product implies acceptance of all such terms, conditions, and notices.

2. Proper Use

This Product is designed for use with pets where training is desired. The specific temperament of your pet may not work with this product. We recommend that you not use this product if your pet is aggressive. If you are unsure whether this is appropriate for your pet, please consult your veterinarian, certified trainer or contact our Customer Care Center at 1-800-732-2677.

Proper use includes reviewing the entire Operating and Training Guide provided with your product and any specific Caution statements.

3. No Unlawful or Prohibited Use

This Product is designed for use with pets only. This pet training device is not intended to harm, injure, or provoke. Using this product in a way that is not intended could result in violation of Federal, State or local laws.

4. Limitation of Liability

In no event shall Radio Systems® Corporation be liable for any direct, indirect, punitive, incidental, special or consequential damages, or any damages whatsoever arising out of or connected with the use or misuse of this Product. Buyer assumes all risks and liability from the use of this Product.

5. Modification of Terms and Conditions

Radio Systems® Corporation reserves the right to change the terms, conditions and notices under which this Product is offered.

Customer Care International

United States / Canada: 1-800-732-2677

Australia: 1800 786 608

New Zealand: 0800 543 054

Caution

Important: The pet training device is not a toy, keep away from children.

- **Do not use this product near fire or open flame.**
- **Keep away from children.**
- **Warn others of the presence of the Pawz Away™ Spray Deterrent.**
- **Use PetSafe® refills only.**
- **Do not puncture. Store away from heat.**
- **Use under well-ventilated conditions.**

FCC

This device complies with part 15 of the FCC Rules. Operation is subject to the following two conditions: (1) This device may not cause harmful interference, and (2) this device must accept any interference received, including interference that may cause undesired operation.

CAUTION: Modification or changes to this equipment not expressly approved by Radio Systems® Corporation may void the user's authority to operate the equipment.

NOTE: This equipment has been tested and found to comply with the limits for a Class B digital device, pursuant to part 15 of the FCC Rules. These limits are designed to provide reasonable protection against harmful interference in a residential installation. This equipment generates, uses, and can radiate radio frequency energy and, if not installed and used in accordance with the instructions, may cause harmful interference to radio communications. However, there is no guarantee that interference will not occur in a specific installation. If interference does occur to radio or television reception, which can be determined by turning the equipment off and on, the user is encouraged to try to correct the interference by one or more of the following measures:

- Reorient or relocate the receiving antenna.
- Increase the separation between the equipment and the receiver.
- Connect the equipment to an outlet on a circuit different from that to which the receiver is connected.
- Consult customer care, the dealer, or an experienced radio/TV technician for help.

This Class B digital apparatus complies with Canadian ICES-003.

Cet appareil numérique de la classe B est conforme à la norme NMB-003 du Canada.

Radio Systems Corporation
10427 Electric Ave.
Knoxville, TN 37932
1-800-732-2677
www.petsafe.net
400-983/1

©2008 Radio Systems® Corporation

Free Manuals Download Website

<http://myh66.com>

<http://usermanuals.us>

<http://www.somanuals.com>

<http://www.4manuals.cc>

<http://www.manual-lib.com>

<http://www.404manual.com>

<http://www.luxmanual.com>

<http://aubethermostatmanual.com>

Golf course search by state

<http://golfingnear.com>

Email search by domain

<http://emailbydomain.com>

Auto manuals search

<http://auto.somanuals.com>

TV manuals search

<http://tv.somanuals.com>