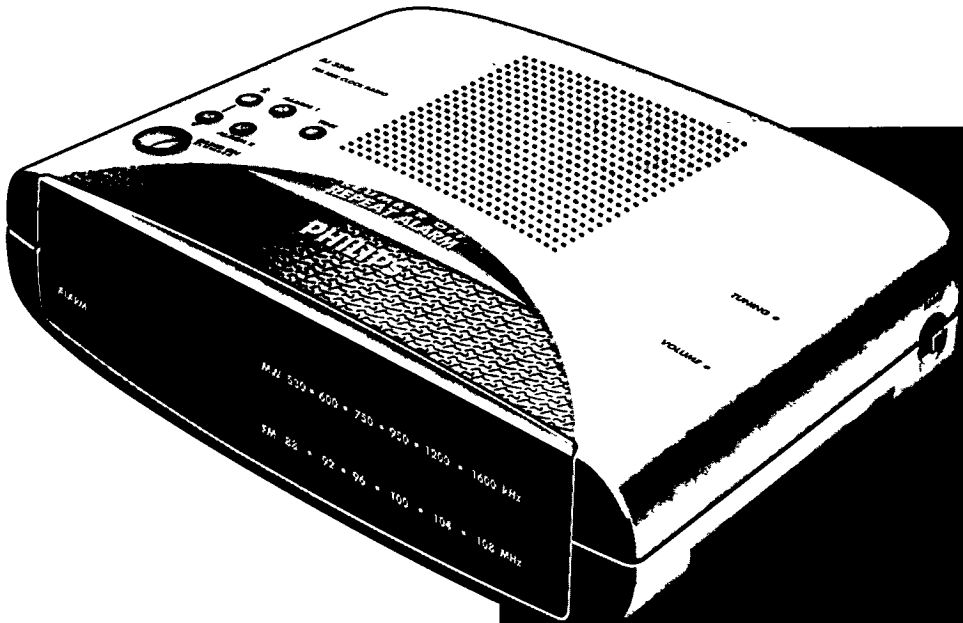


PHILIPS

AJ 3240 Clock Radio



Inventor of CD and DCC
DIGITAL
DCC
Compact Disc
COMPACT
DISC
DIGITAL AUDIO
a product from Philips

E España

Declaración de conformidad con normas

El que suscribe, en nombre y representación de:
**Consumer Electronics Factory
 Philips Hong Kong Ltd.**

declara, bajo su propia responsabilidad, que el

equipo: **Radio reloj**
 fabricado por: **BU PA Hong Kong**
 en: **Far East**
 marca: **Philips**
 modelo: **AJ 3240**

objeto de esta declaración, cumple con la norma-
 tiva siguiente: Reglamento sobre Perturbaciones
 Radioeléctricas, Real Decreto 138/1989, Anexo V.

Hecho en: **Hong Kong, 01-04-1995**

Firma:



Nombre: **T.M. Siu**
 Cargo: **Quality Manager**

MEX Mexico

NOM



Es necesario que lea cuidadosamente su
 instructivo de manejo.

N Norge

Typeskilt finnes på apparatens underside.

Observer

Nettbryteren er sekundert innkoplet. Den inne-
 bygde nettdelen er derfor ikke frakoplet nettet så
 lenge apparatet er tilsluttet nettkontakten.

Mounting the set on a shelf37

Englishpage 4 **English**

Françaispage 7 **Français**

Españolpágina 10 **Español**

Deutschpage 13 **Deutsch**

Nederlandspage 16 **Nederlands**

Italianopagina 19 **Italiano**

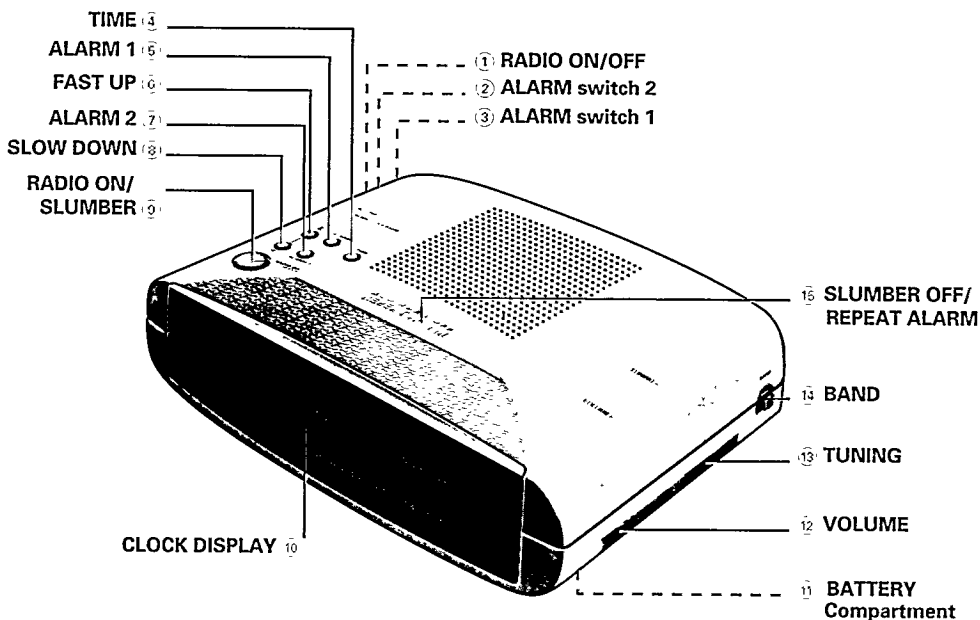
Portuguêspágina 22 **Português**

Danskside 25 **Dansk**

Svenskasida 28 **Svenska**

Suomisivu 31 **Suomi**

Ἑλληνικάσελίδα 34 **Ἑλληνικά**



IMPORTANT NOTES FOR USERS IN THE U.K.

Mains plug

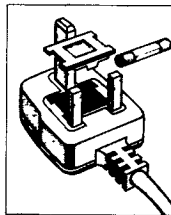
This apparatus is fitted with an approved moulded 13 Amp plug. To change a fuse in this type of plug proceed as follows:

- Remove fuse cover and fuse.
- Fix new fuse which should be a BS1362 5 Amp, A S T.A or BSI approved type
- Refit the fuse cover

If the fitted plug is not suitable for your socket outlets, it should be cut off and an appropriate plug fitted in its place.

If the mains plug contains a fuse, this should have a value of 5 Amp. If a plug without a fuse is used, the fuse at the distribution board should not be greater than 5 Amp.

Note: The severed plug must be disposed to avoid a possible shock hazard should it be inserted into a 13 Amp socket elsewhere.



How to connect a plug

The wires in the mains lead are coloured with the following code. blue = neutral (N), brown = live (L). As these colours may not correspond with the colour markings identifying the terminals in your plug, proceed as follows.

- Connect the blue wire to the terminal marked N or coloured blue or black
- Connect the brown wire to the terminal marked L or coloured brown or red
- Do not connect either wire to the earth terminal in the plug, marked E (or \perp) or coloured green (or green and yellow).

Before replacing the plug cover, make certain that the cord grip is clamped over the sheath of the lead - not simply over the two wires.

If in doubt, consult a qualified electrician.

BUTTONS

- ① **RADIO** switch
 - **ON** - the radio is switched on
 - **OFF** - the radio is switched off
- ② **ALARM** switch 2:
 - **OFF** - alarm off
 - **RADIO** - for waking up by radio
 - **BUZZER** - for waking up by buzzer
- ③ **ALARM** switch 1:
 - **OFF** - alarm off
 - **RADIO** - for waking up by radio
 - **BUZZER** - for waking up by buzzer
- ④ **TIME** - to set the time
- ⑤ **ALARM 1** - to set alarm time 1
- ⑥ **FAST UP** - fast forward
- ⑦ **ALARM 2** - to set alarm time 2
- ⑧ **SLOW DOWN** - slow backward
- ⑨ **RADIO ON/SLUMBER** - To switch on the radio
- ⑩ **CLOCK DISPLAY** with ALARM- and PM- indicator (not for all versions)
- ⑪ **BATTERY** Compartment
- ⑫ **VOLUME** control - for adjusting the volume
- ⑬ **TUNING** dial - for locating the required station
- ⑭ **BAND** switch - for selecting wavebands
- ⑮ **SLUMBER OFF / REPEAT ALARM** button:
 - To switch off alarm temporarily
 - To switch off the radio

MAINS CONNECTION

- Check if the mains voltage as shown on the type plate on the base of the set corresponds to your local mains supply. If it does not, consult your dealer or service organisation.
- As soon as you insert the mains plug into the wall socket, the figures on the display ⑩ will blink. This means that you must set the correct time.
- To disconnect the set from the mains completely, withdraw the mains plug from the wall socket.

RADIO

RADIO ON

- Set the RADIO switch ① to ON.
- Select the waveband using BAND switch ⑭.
- Select the required station using the TUNING ⑬ knob.
- Adjust the sound level with the VOLUME switch ⑫.

RADIO OFF

- Set the RADIO ① switch to OFF.

Aerials

- The AM aerial is built into the appliance. You may have to adjust the position of the clock radio slightly for better reception.
- For FM reception, there is an aerial wire at the rear of the clock radio. This wire must be extended and if necessary adjusted slightly in order to obtain good reception.

CLOCK

Clock display

The clock indicates shows the time. The display also indicates whether you have switched on the alarm. If alarm 1 is on, the alarm 1 ·· indicator lights up. For alarm 2 the alarm 2 ·· indicator lights up and for dual alarm both light up.

Setting the time

- Keep the TIME button ④ pressed and set the correct time as follows:
 - Fast forward with the FAST UP ⑥ button.
 - Slow backward with the SLOW DOWN button ⑧.
- Release the TIME button ④. The correct time appears in the display.



859

Alarm

SETTING THE ALARM

Alarm time

If you wish to use the alarm, then you should first of all set the alarm time. The alarm time is the time when you wish to be woken up. You may set two different alarm times. This can be useful if, for example, you need to be woken at a different time at the weekend.

Setting alarm time 1

- Press ALARM 1 button (5). The display will now show alarm time 1:



- Keep ALARM 1 button (5) pressed and set the required alarm time with the FAST UP (6) and the SLOW DOWN (8) buttons.
- Release ALARM 1 button (5). The display will now show the correct time.
- You can check alarm time 1 by simply pressing the ALARM 1 button (5).

Setting alarm time 2

- Press ALARM 2 button (7). The display will now show alarm time 2:



- Keep ALARM 2 button (7) pressed and set the required alarm time with the FAST UP (6) and the SLOW DOWN (8) buttons.
- Release ALARM 2 button (7). The display will now show the correct time.
- You can check alarm time 2 by simply pressing the ALARM 2 button (7).

ALARM ON

The clock radio can awaken you in 2 ways by sliding OFF-RAD-BUZ (2).

ALARM 1 / ALARM 2

Wake by radio

- Make sure the volume of the radio is loud enough to wake you.
- Set ALARM switch to RADIO.
- You will be awakened at the set alarm time by the radio.

Wake by buzzer

- Set ALARM switch to BUZZER.
- At the set alarm time you will be awakened by the buzzer.

ALARM OFF

You can switch off the alarm in 2 ways:

Switching off the alarm for 6 minutes

- Press the SLUMBER OFF/REPEAT ALARM button (16). With this switch you temporarily switch off the alarm. After six minutes the alarm (radio or buzzer) will sound again. If you press the SLUMBER OFF/REPEAT ALARM button (16) again, the same will happen. If the SLUMBER OFF/REPEAT ALARM button (16) is not pressed again, the alarm will switch itself off after 59 minutes. The following day the alarm signal will sound again at the set alarm time.

Switching off the alarm completely

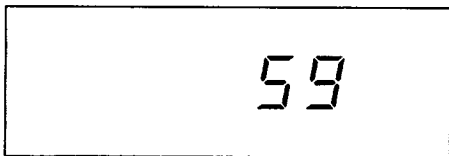
- Set the ALARM switches to OFF. On the display the ALARM indicator will disappear and the alarm is now switched off. If you wish to be awakened the following day again, you must reset the ALARM switch to RADIO or BUZZER before going asleep.

SLUMBER

The clock radio has a built-in slumber function. This function enables you to listen to the radio before you fall asleep. You will not have to switch off the clock radio yourself. This will take place automatically. The period during which you continue to listen to the radio is called the slumber time. You can set this yourself. The maximum slumber time is 59 minutes.

SLUMBER ON

If you wish to slumber for 59 minutes, you simply should press the SLUMBER button (9). As long as you press the button, the display will show a slumber time of 59 minutes.



- If you wish to slumber for less than 59 minutes, keep the SLUMBER button (9) depressed. The display will now slowly begin to count down from 59 to 00 minutes. As soon as the required slumber time is reached, release the button.

SLUMBER OFF

You can switch off the radio before the slumber time has elapsed:

- Press the SLUMBER OFF/REPEAT ALARM button (15) and the clock radio is switched off.

Note:

- The slumber function will not operate if the RADIO switch is ON.
- The slumber function has no influence on the alarm setting.
- During slumbering the radio is often on very low. Bear this in mind if you wish to be woken the next day, as you will perhaps sleep through the sound of the radio.

POWER FAILURE

- As soon as a power failure occurs, the complete clock radio will be switched off.
- As soon as the power supply returns, the numbers on the display start to flash. This indicates that you must set the correct time on the clock.
- You can insert a 9 Volts pack battery (type 6F22) in the clock radio. Should there be a power failure, the clock will continue to function. You will not see this, however, because the battery does not illuminate the clock display. As soon as the power is switched on again, the display will indicate the correct time. For clarity: Alarm, radio and display do not work on battery.
- Before inserting the battery, connect the power plug to the wall outlet.
- Place the battery in the compartment on the underside of the clock radio.
- Replace the battery once a year. It is not possible to say precisely how long the battery will last. The service life depends on how often and for how long the power supply fails. This varies according to country and region.

MAINTENANCE

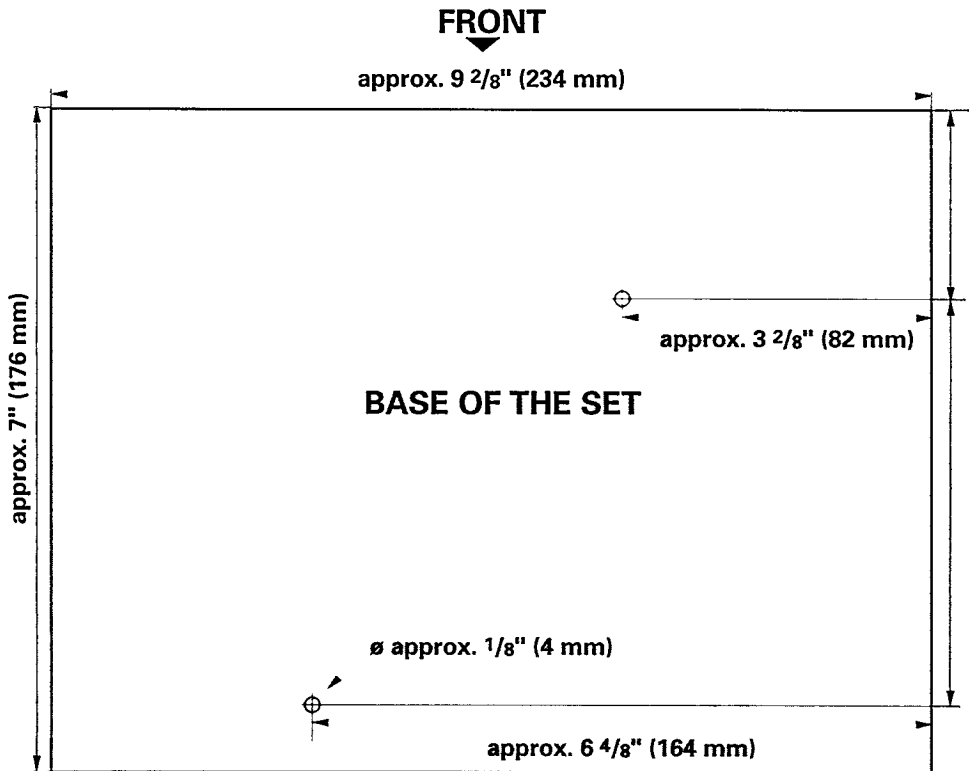
- If you do not intend to use the clock radio for a long time, it is better to remove the plug from the wall socket. In addition to this, it is advisable to remove the battery from the clock radio. This will prevent any danger of leakage and the clock radio will not be damaged.
- Fingerprints, dust and dirt on the clock radio should be removed using a clean and damp soft cloth or chamois leather. When cleaning do not use any products which contain abrasive agents or solvents (benzine, thinner, alcohol etc.). These might affect the housing.
- Rain, dampness and extreme heat may damage the clock radio. For this reason it should not be placed under direct sunlight or close to heating elements for any period of time.

The type-plate is located on the underside of the clock radio.

This product complies with the radio interference requirements of the European Community

Mounting the set on a shelf

- Make two mounting holes on the shelf as indicated below.
- Mount the set on the shelf with two screws.





México

NOM



Brasil

GARANTÍA PARA MÉXICO

Este aparato está fabricado con materiales de alta calidad y ha sido cuidadosamente verificado. Philips, por lo tanto, da a usted una garantía de 12 meses a partir de su fecha de compra. La garantía ampara la reposición de las piezas defectuosas debidas a fallas en su montaje o en los materiales, incluyendo la mano de obra necesaria para su reemplazo en nuestras Sucursales o talleres autorizados.

En caso de fallas en su aparato le rogamos se sirva poner en contacto con su distribuidor. Esta garantía no cubrirá las averías que resulten como consecuencia de una instalación incorrecta del aparato, manifiesto maltrato o uso inadecuado del mismo.

Philips se obliga a reparar y devolver a usted su aparato en un plazo no mayor de 30 días hábiles contados a partir de la fecha de haber ingresado su aparato a uno de nuestros talleres. Con la presentación de la factura o remisión de su aparato podrá hacer efectiva la garantía. Si usted tiene alguna duda o pregunta que no le pueda solucionar su distribuidor, por favor ponerse en contacto con:

Oficinas Centrales de Servicio,
Av. Coyoacán No. 1051,
Col. del Valle,
03100 México, D.F.
☎ 5-75-20-22 o 5-75-01-00

GARANTÍA PARA BRASIL

Este aparelho é garantido pela Philips do Brasil Ltda. e a Philips da Amazônia S.A. Indústria Eletrônica, por um período superior ao estabelecido por lei. Porém, para que a garantia tenha validade, é imprescindível que, além deste certificado, seja apresentada a nota fiscal de compra do produto.

1. Philips do Brasil Ltda. e Philips da Amazônia S.A. Indústria Eletrônica asseguram ao proprietário consumidor deste aparelho a garantia de 180 dias (90 dias legal mais 90 dias adicional) contados a partir da data de entrega do produto, conforme expresso na nota fiscal de compra que passa a fazer parte deste certificado.
2. Esta garantia perderá sua validade se:
 - A. O defeito apresentado for ocasionado por uso indevido ou em desacordo com o seu manual de instruções.
 - B. O produto for alterado, violado, ajustado ou consertado por pessoa não autorizada pela Philips.
 - C. O produto for ligado a fonte de energia (rede elétrica, pilhas, bateria, etc.) de características diferentes das recomendadas no manual de instruções e/ou no produto.
 - D. O número de série que identifica o produto estiver de alguma forma adulterado ou rasurado.
3. Estão excluídos desta garantia defeitos decorrentes do descumprimento do manual de instruções do produto, de casos fortuitos ou de força maior, bem como aqueles causados por agentes da natureza e acidentes.
4. Excluem-se igualmente desta garantia os defeitos decorrentes do uso dos produtos em serviços não doméstico/residencial regular ou em desacordo com o uso recomendado.
5. Nos municípios onde não exista oficina autorizada de serviço Philips, as despesas de transporte do aparelho e/ou do técnico autorizada correm por conta do sr. consumidor requerente do serviço.

Philips do Brasil Ltda. e
Philips da Amazônia S.A. Indústria Eletrônica

Para informações adicionais sobre o produto ou para eventual necessidade de utilização da rede de oficinas autorizadas, ligue para o centro de informação ao consumidor:

☎ 0800-123123 (discagem direta gratuita)
 ou escreva para a caixa postal:
21462 cep 04698-970 - São Paulo



Australia



New Zealand

GARANTEE FOR AUSTRALIA

The benefits given to the purchaser by this warranty are in addition to all other rights and remedies, which, under the Trade Practices Act or other Commonwealth or State law, the purchaser or owner has in respect of the product.

The Philips product carries the following warranties:

- C-series HiFi-systems 12 months.
- Compact Disc Players: 12 months.
- Home Audio Systems: 6 months.
- Clock radios, portable radios, cassette recorders, cassette players and radio recorders: 90 days.

Any defect in materials or workmanship occurring within the specified period from the date of delivery, will be rectified free of charge by the retailer from whom this product was purchased.

Note: Please retain your purchase docket to assist prompt service.

Conditions of this warranty

1. All claims for warranty service must be made to the retailer from whom this product was purchased. All transport charges incurred in connection with warranty service or replacement will be paid by the purchaser.
2. These warranties do not cover batteries and extend only to defects in materials or workmanship occurring under normal use of the product where operated in accordance with our instructions.

Philips
Consumer Products Division
Technology Park
Figtree Drive, Australia Centre
Homebush 2140
New South Wales

GARANTEE FOR NEW ZEALAND

Thank-you for purchasing this quality Philips product.

Philips New Zealand Ltd guarantees this product against defective components and faulty workmanship for a period of 12 months. Any defect in materials or workmanship occurring within 12 months from the date of purchase subject to the following conditions will be rectified free of charge by the retailer from whom this product was purchased.

Conditions

1. The product must have been purchased in New Zealand. As proof of purchase, retain the original sales docket indicating the date of purchase.
2. The guarantee applies only to faults caused by defective components, or faulty workmanship on the part of the manufacturer.
3. The guarantee does not cover failures caused by misuse, neglect, normal wear and tear, accidental breakage, use on the incorrect voltage, use contrary to operating instructions, or unauthorised modification to the product or repair by an unauthorised technician.
4. Reasonable evidence (in the form of a sales docket) must be supplied to indicate that the product was purchased no more than 12 months prior to the date of your claim.
5. In the event of a failure, Philips shall be under no liability for any injury, or any loss or damage caused to property or products other than the product under guarantee.

This guarantee does not prejudice your rights under common law and statute, and is in addition to the normal responsibilities of the retailer and Philips.

How to claim

Should your Philips product fail within the guarantee period, please return it to the retailer from whom it was purchased. In most cases the retailer will be able to satisfactorily repair or replace the product.

However, should the retailer not be able to conclude the matter satisfactorily, or if you have other difficulties claiming under this guarantee, please contact

The Guarantee Controller
Philips New Zealand Ltd.
 ☐ P.O. Box 41.021
Auckland

☎ (09) 84 94 160
 fax ☎ (09) 84 97 858



AJ 3240 - CLOCK RADIO

Englishpage 4

Françaispage 7

Españolpágina 10

Deutschpage 13

Nederlandspage 16

Italianopagina 19

Portugûespágina 22

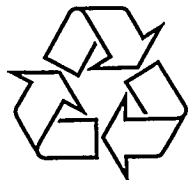
Danskside 25

Svenskasida 28

Suomisivu 31

Ελληνικάσελίδα 34

3140 115 21591



Printed in Hong Kong

Free Manuals Download Website

<http://myh66.com>

<http://usermanuals.us>

<http://www.somanuals.com>

<http://www.4manuals.cc>

<http://www.manual-lib.com>

<http://www.404manual.com>

<http://www.luxmanual.com>

<http://aubethermostatmanual.com>

Golf course search by state

<http://golfingnear.com>

Email search by domain

<http://emailbydomain.com>

Auto manuals search

<http://auto.somanuals.com>

TV manuals search

<http://tv.somanuals.com>