

# Always there to help you

Register your product and get support at  
[www.philips.com/welcome](http://www.philips.com/welcome)



AJT600/37



## User manual

**PHILIPS**

# Contents

---

<b>1</b>	<b>Important safety instruction</b>	<b>3</b>
----------	-------------------------------------	----------

---

<b>2</b>	<b>Your Bluetooth Speaker</b>	<b>4</b>
	What's in the box	4
	Overview of the main unit	5

---

<b>3</b>	<b>Get started</b>	<b>6</b>
	Connect power	6
	Set time	7
	Turn on	7

---

<b>4</b>	<b>Play from Bluetooth device</b>	<b>7</b>
	Bluetooth reset	7

---

<b>5</b>	<b>Play audio from an external device</b>	<b>8</b>
----------	---	----------

---

<b>6</b>	<b>Other features</b>	<b>8</b>
	Set alarm timer	8
	Set sleep timer	9
	Adjust display brightness	9

---

<b>7</b>	<b>Product information</b>	<b>10</b>
	Specifications	10

---

<b>8</b>	<b>Troubleshooting</b>	<b>10</b>
----------	------------------------	-----------

---

<b>9</b>	<b>Notice</b>	<b>11</b>
	Disposal of your old product	11

# 1 Important safety instruction

- ① Read these instructions.
- ② Keep these instructions.
- ③ Heed all warnings.
- ④ Follow all instructions.
- ⑤ Do not use this apparatus near water.
- ⑥ Clean only with dry cloth.
- ⑦ Do not block any ventilation openings. Install in accordance with the manufacturer's instructions.
- ⑧ Do not install near any heat sources such as radiators, heat registers, stoves, or other apparatus (including amplifiers) that produce heat.
- ⑨ Protect the power cord from being walked on or pinched, particularly at plugs, convenience receptacles, and the point where they exit from the apparatus.
- ⑩ Only use attachments/accessories specified by the manufacturer.
- ⑪ Use only with the cart, stand, tripod, bracket, or table specified by the manufacturer or sold with the apparatus. When a cart is used, use caution when moving the cart/apparatus combination to avoid injury from tip-over.



- ⑫ Unplug this apparatus during lightning storms or when unused for long periods of time.

- ⑬ Refer all servicing to qualified service personnel. Servicing is required when the apparatus has been damaged in any way, such as power-supply cord or plug is damaged, liquid has been spilled or objects have fallen into the apparatus, the apparatus has been exposed to rain or moisture, does not operate normally, or has been dropped.
- ⑭ Battery usage **CAUTION** – To prevent battery leakage which may result in bodily injury, property damage, or damage to the unit:
  - Install all batteries correctly, + and - as marked on the unit.
  - Do not mix batteries (old and new or carbon and alkaline, etc.).
  - Remove batteries when the unit is not used for a long time.
  - The battery (battery or batteries installed) shall not be exposed to excessive heat such as sunshine, fire or the like.
- ⑮ Apparatus shall not be exposed to dripping or splashing.
- ⑯ Do not place any sources of danger on the apparatus (e.g. liquid filled objects, lighted candles).
- ⑰ This product may contain lead and mercury. Disposal of these materials may be regulated due to environmental considerations. For disposal or recycling information, please contact your local authorities or the Electronic Industries Alliance: [www.eiae.org](http://www.eiae.org).
- ⑱ Where the plug of the Direct Plug-in Adapter is used as the disconnect device, the disconnect device shall remain readily operable.

## Warning

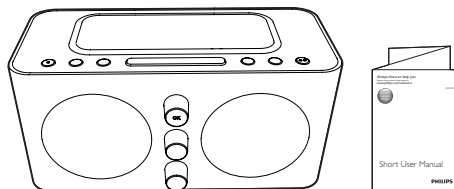
- Never remove the casing of this Bluetooth speaker.
- Never place this Bluetooth speaker on other electrical equipment.
- Keep this Bluetooth speaker away from direct sunlight, naked flames or heat.
- To reduce the risk of fire or electric shock, do not expose this apparatus to rain or moisture.
- Ensure that you always have easy access to the power cord, plug or adapter to disconnect this Bluetooth speaker from the power.

# 2 Your Bluetooth Speaker

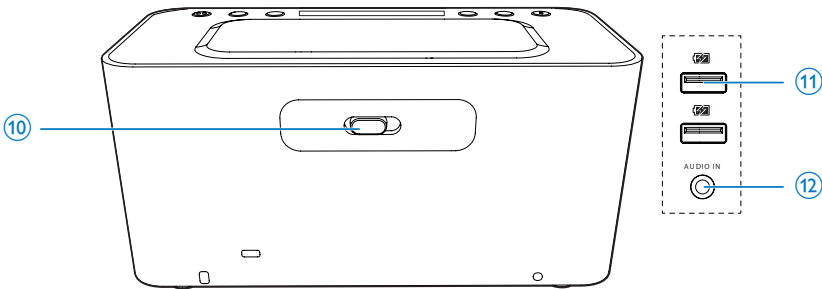
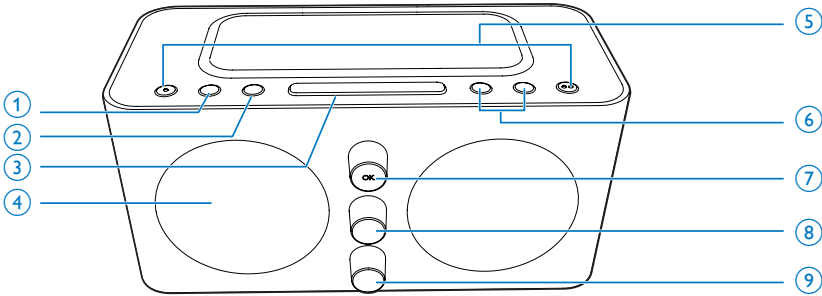
Congratulations on your purchase, and welcome to Philips! To fully benefit from the support that Philips offers, register your product at [www.philips.com/welcome](http://www.philips.com/welcome).


---

## What's in the box



## Overview of the main unit



- ① **SOURCE**
  - Select a source.(Bluetooth/AUDIO IN)
  - Press repeatedly to switch to standby mode.
- ② **SLEEP**
  - Set sleep timer.
- ③ **SNOOZE/BRIGHTNESS**
  - Snooze alarm.
  - Adjust display brightness.
- ④ **Display panel**
  - Show current information.
- ⑤ **AL1/AL2**
  - Activate or deactivate alarm timer.
- ⑥ **VOLUME +/-**
  - Adjust volume.
- ⑦ **First Knob (HOUR)**
  - Adjust hour.
- ⑧ **Second Knob (MINUTE)**
  - Adjust minute.
- ⑨ **Third Knob (CLOCK/SET TIME/SET AL1/SET AL2)**
  - Set clock.
  - Set alarm.
- ⑩ **BUZZ/SOUND 1/SOUND 2**
  - Select an alarm source for Alarm 1 and Alarm 2.
- ⑪ 
  - Charge your devices through USB cable (not included).
- ⑫ **AUDIO IN**
  - Connect an external audio device.

# 3 Get started

Always follow the instructions in this chapter in sequence.

---

## Connect power

The unit can only be powered by supplied AC power. Batteries are only used for time and alarm backup if not connected with AC power.

---

### Option 1: AC power

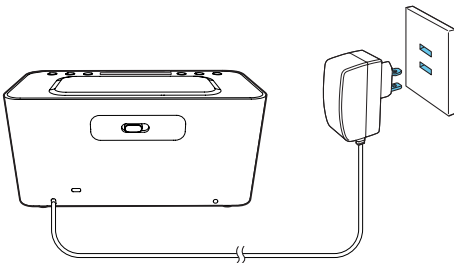
#### Warning

- Risk of product damage! Make sure that the power supply voltage corresponds to the voltage printed on the back or the underside of the unit.
- Risk of electric shock! When you disconnect the AC power, always pull the plug from the socket. Never pull the cord.

Connect the AC power cord to the wall socket.

#### Tip

- To save energy, turn the unit off after use.



---

### Option 2: Battery power

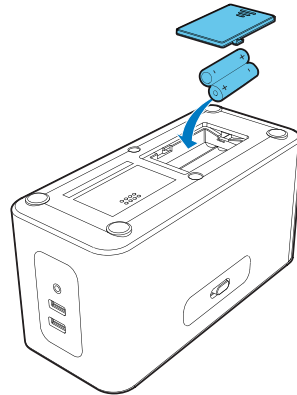
#### Caution

- Batteries contain chemical substances, so they should be disposed of properly.

#### Note

- Batteries are not supplied with the accessories.
- **bAt** shows on the display when the battery level is low.

- 1 Open the battery compartment.
- 2 Insert 2 batteries (type: 1.5V LR6/AA) with correct polarity (+/-) as indicated.
- 3 Close the battery compartment.



---

## Set time

- 1 Rotate the **Third Knob** to "SET TIME" to activate clock setting mode.  
↳ Hour and minute digits blinks.
- 2 Rotate the **First Knob** to adjust the hour.
- 3 Rotate the **Second Knob** to adjust the minute.
- 4 Press **OK** on the **First Knob** to confirm.  
↳ The setting time is displayed.
- 5 Rotate the **Third Knob** to **CLOCK** after setting.  
↳ The hour and minute digits stops blinking.

---



## Turn on

The clock radio turns on automatically once your plugged in.

# 4 Play from Bluetooth device

### Note

- The effective operation range between the Bluetooth speaker and the paired device is approximately 10 meters (30 feet).
- Keep this Bluetooth speaker away from other electronic devices that may cause interference.
- Make sure that the **Third Knob** switches to **CLOCK** before setting.

- 1 Press **SOURCE** repeatedly to select **Bluetooth source**.  
↳  on the display panel flashes.
- 2 Activate the Bluetooth function in your Bluetooth device (see the device user manual).
- 3 Select "AJT600" displayed on your device for pairing.  
↳ If connection is successful, the Bluetooth speaker beeps twice and  steadily on.
- 4 Start music play on your Bluetooth device.  
↳ If Bluetooth disconnected, the music will pause. Press **▶||** on the Bluetooth device to start play again.

---

## Bluetooth reset

In Bluetooth mode, press **OK** on the first knob for over 5 seconds to erase all pairing informations.


- ↳ "BT RESET" displays on the panel.
  - The Bluetooth speaker enters Bluetooth mode automatically after erase completed.

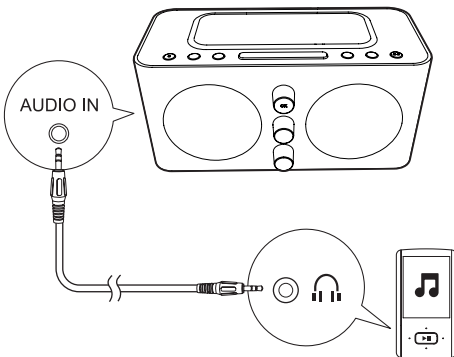
## 5 Play audio from an external device

### Note

- Make sure that the **Third Knob** switched to **CLOCK** before setting.
- The speaker can not pair with other Bluetooth devices in **AUDIO IN** mode.

You can listen to audio from an external device through this Bluetooth speaker:

- 1 Connect an audio cable to:
  - the **AUDIO IN** socket on the Bluetooth speaker.
  - the headphone socket on an external device.
- 2 Press **SOURCE** repeatedly to select the Audio-in source.  
↳ The  on the display panel lights up.
- 3 Play audio on the external device (refer to its user manual).





## 6 Other features

### Set alarm timer

You can set two alarms to ring at different time.

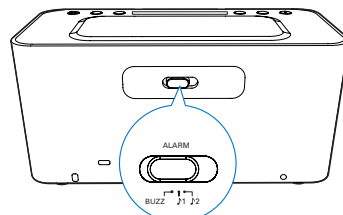
### Note

- Make sure that you have set the clock correctly.

- 1 Rotate the **Third Knob** to **SET AL1** or **SET AL2** to activate alarm setting mode.  
↳ The  /  and time digits blink.
- 2 Rotate the **First Knob** to adjust the hour.
- 3 Rotate the **Second Knob** to adjust the minute.
- 4 Press **OK** on **First Knob** to confirm.
- 5 Rotate the **Third Knob** to **CLOCK** after setting.

### Select alarm source

You can select buzzer, sound 1, or sound 2 as your alarm sound.





---

## Activate/deactivate alarm timer

### Note

- Make sure that the **Third Knob** switched to **CLOCK** before setting.

Press **AL1/AL2** to activate or deactivate the alarm timer.

- ↳ The **🕒 / 🕒** appears if alarm timer is on and disappears if it is off.

To stop the ringing alarm, press the corresponding **AL1/AL2**.

- ↳ The alarm repeats ringing for the next day.

---

## Snooze the alarm

When alarm sounds, press **SNOOZE**.

- ↳ The alarm snoozes and repeats ringing nine minutes later.

---

## Set sleep timer

### Note

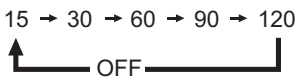
- Make sure that the **Third Knob** switched to **CLOCK** before setting.

This Bluetooth speaker can switch to standby mode automatically after a preset period.

- Press **SLEEP** repeatedly to select the sleep timer period (in minutes).
  - ↳ When the sleep timer is activated, **zZ** appears.

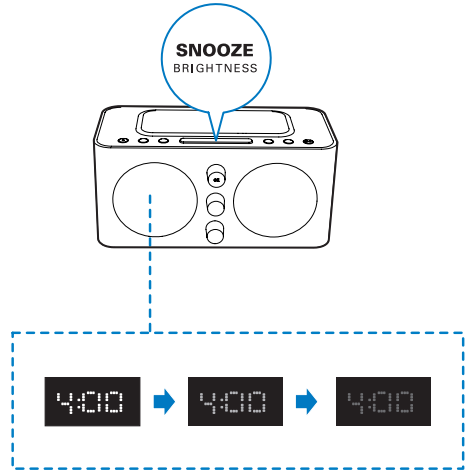
To deactivate the sleep timer:

- Press **SLEEP** repeatedly until **[OFF]** (off) appears.



---

## Adjust display brightness



# 7 Product information

## Note

- Product information is subject to change without prior notice.

## Specifications

### Amplifier

Rated Output Power	5W RMS
--------------------	--------

### Bluetooth

Bluetooth specification	V3.0+EDR
Supported profiles	HFP v1.5, AD2P v1.2, HSP v1.2
Range	10 m (Free space)

### General information

Power supply	Model:
-AC Power	ASSA36A-090160;
-Battery	Input: 100-240V ~, 50/60Hz, 0.6A; Output: 9.0V === 1600 mA 2 x AA batteries
Operation Power Consumption	<15 W
Standby Power Consumption	<1 W
Dimensions - Main Unit (W x H x D)	195 x 99 x 98 mm
Weight - Main Unit	0.70 kg

# 8 Troubleshooting

## Warning

- Never remove the casing of this device.

To keep the warranty valid, never try to repair the system yourself.

If you encounter problems when using this device, check the following points before requesting service. If the problem remains unsolved, go to the Philips Web page ([www.philips.com/support](http://www.philips.com/support)). When you contact Philips, make sure that the device is nearby and the model number and serial number are available.

### No power

- Ensure that the power cord is connected securely.
- Ensure that there is power at the power supply socket.
- Ensure that the batteries are installed correctly.

### No response from the Bluetooth speaker

- Disconnect and reconnect the AC power plug, then turn on the Bluetooth speaker again.
- Check if you have selected the correct audio source.
- Make sure that your Bluetooth device is within the effective operation range.

### Alarm does not work

- Set the clock/alarm correctly.

### Clock/alarm setting erased

- Power has been interrupted or the power plug has been disconnected.
- Reset the clock/alarm.

# 9 Notice

Any changes or modifications made to this device that are not expressly approved by WOOX Innovations may void the user's authority to operate the equipment.

## Notice of compliance

The device complies with Part 15 of the FCC Rules. Operation is subject to the following two conditions:

- ① **This device may not cause harmful interference, and**
- ② **This device must accept any interference received, including interference that may cause undesired operation.**

## Notice for the USA

**This equipment has been tested and found to comply with the limits for a Class B digital device, pursuant to part 15 of the FCC Rules.**

These limits are designed to provide reasonable protection against harmful interference in a residential installation. This equipment generates, uses, and can radiate radio frequency energy and, if not installed and used in accordance with the instruction manual, may cause harmful interference to radio communications. However, there is no guarantee that interference will not occur in a particular installation. If this equipment does cause harmful interference to radio or television reception, which can be determined by turning the equipment off and on, the user is encouraged to try to correct the interference by one or more of the following measures:

- Relocate the receiving antenna.
- Increase the separation between equipment and receiver.
- Connect the equipment into an outlet on a circuit different from that to which the receiver is connected.
- Consult the dealer or an experienced radio/TV technician for help.

## Disposal of your old product

Your product is designed and manufactured with high quality materials and components, which can be recycled and reused. Never dispose of your product with other household waste. Please inform yourself about the local rules on the separate collection of electrical and electronic products and batteries. The correct disposal of these products helps prevent potentially negative consequences on the environment and human health.

Your product contains batteries, which cannot be disposed of with normal household waste. Please inform yourself about the local rules on separate collection of batteries. The correct disposal of batteries helps prevent potentially negative consequences on the environment and human health. Please visit [www.recycle.philips.com](http://www.recycle.philips.com) for additional information on a recycling center in your area.

## Environmental information

All unnecessary packaging has been omitted. We have tried to make the packaging easy to separate into three materials: cardboard (box), polystyrene foam (buffer) and polyethylene (bags, protective foam sheet.) Your system consists of materials which can be recycled and reused if disassembled by a specialized company. Please observe the local regulations regarding the disposal of packaging materials, exhausted batteries and old equipment.



**Be responsible  
Respect copyrights**

The making of unauthorized copies of copy-protected material, including computer programs, files, broadcasts and sound recordings, may be an infringement of copyrights and constitute a criminal offence. This equipment should not be used for such purposes.



**Note**

- The type plate is located on the bottom of the apparatus.



Specifications are subject to change without notice

2014 © WOOX Innovations Limited.

All rights reserved.

This product was brought to the market by WOOX Innovations Limited or one of its affiliates, further referred to in this document as WOOX Innovations, and is the manufacturer of the product. P&F is the warrantor in relation to the product with which this booklet was packaged. Philips and the Philips Shield Emblem are registered trademarks of Koninklijke Philips N.V.

AJT600D\_37\_UM\_V2.0



## Free Manuals Download Website

<http://myh66.com>

<http://usermanuals.us>

<http://www.somanuals.com>

<http://www.4manuals.cc>

<http://www.manual-lib.com>

<http://www.404manual.com>

<http://www.luxmanual.com>

<http://aubethermostatmanual.com>

Golf course search by state

<http://golfingnear.com>

Email search by domain

<http://emailbydomain.com>

Auto manuals search

<http://auto.somanuals.com>

TV manuals search

<http://tv.somanuals.com>