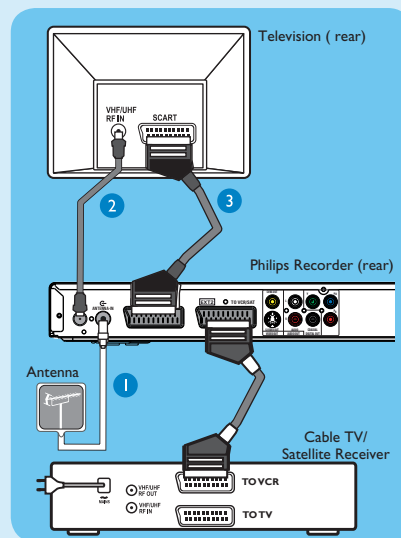


# 1 Connect

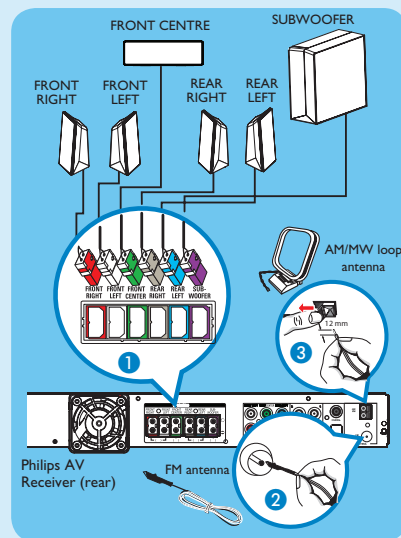
## A Connecting Recorder and TV



- 1 Unplug the existing antenna cable from your TV and connect it to the **ANTENNA IN** socket on the recorder.
  - If you have a Cable Box or Satellite Receiver, connect a scart cable from the **EXT2-TO VCR/SAT** scart socket on the recorder to the SCART (TO VCR) socket on the Cable Box/Satellite Receiver.
- Note** The antenna connection may not be required, depending on the capabilities of your Cable Box / Satellite Receiver. Refer to its user manual for more information.
- 2 Connect an RF antenna cable (supplied) from the **TV-OUT** socket on the recorder to the Antenna In socket on the TV.
  - 3 Connect a scart cable (supplied) from the **EXT1-TO TV** scart socket on the recorder to the SCART socket on your TV.
  - 4 Plug in the power cable from the recorder to an AC power outlet.

**Note** Refer to the accompanying User Manual for other possible connections.

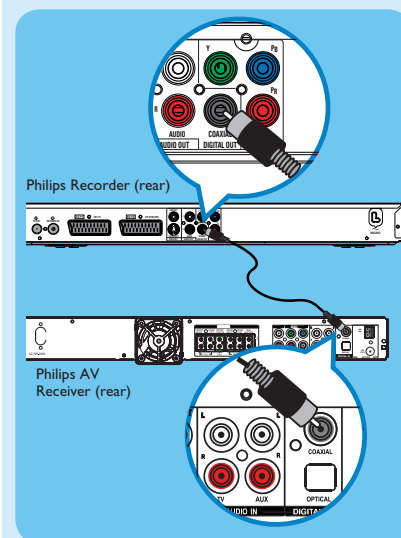
## B Connecting Speakers and radio antennas to AV Receiver



- 1 Connect the various coloured plugs from the speakers and subwoofer to the same coloured sockets on the AV Receiver.
- 2 Connect the FM antenna to the inner pin of the FM 75 Ω socket. Extend the antenna for optimum reception.
- 3 Unfold the AM/MW loop antenna and fix the claw into the slot. Push the tabs and insert the wires into the AM/MW sockets.
- 4 Plug in the power cable from the AV Receiver to an AC power outlet.

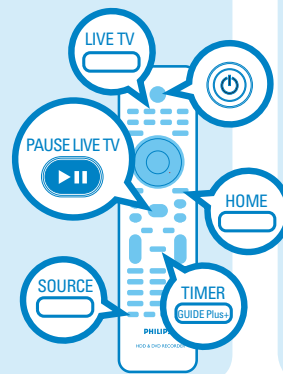
**Note** Keep the antennas away from the electronic devices to prevent unwanted interference.

## C Connecting Recorder and AV Receiver



This connection enables you to hear the recorder playback from the AV Receiver. It supports multi-channel surround sound output.

- Connect the coaxial cable (supplied) between the **COAXIAL OUT** socket on the recorder and **COAXIAL IN** socket on the AV Receiver.



# 2 Set up

## A Finding the viewing channel

- 1 Press **STANDBY-ON** on the recorder.
- 2 Turn on the TV. You should see the installation menu.



- 3 In case you don't see the recorder's setting menu, press the Channel Down button on the TV's remote control repeatedly (or AV, SELECT, - button) until you see the menu. This is the correct viewing channel for the recorder.

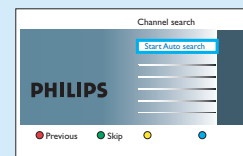
## B Start initial installation

Use the recorder's remote control and follow the on-screen instructions to complete the installation.

- 1 Select the desired menu language, your country and the TV shape.

**Note** Press **OK** or the **Green** button on the remote control to go to the next screen.

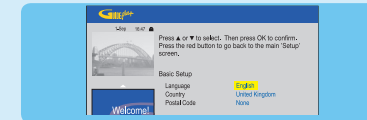
- 2 Press **OK** to start automatic analogue channel search.



- 3 Once complete, press the **Green** button to continue.
- 4 Enter the correct time in the entry field, press **OK** followed by the **Green** button to continue. Proceed the same for date entry.
- 5 To continue with the GUIDE Plus+ installation, press the **Green** button.

- Otherwise, press the **Red** button to skip.

## C Install the GUIDE Plus+ system



- Follow the on-screen instructions to select your language, country and enter the postal code of your area.

**Note** If no or wrong postal code is entered, it will cause no GUIDE Plus+ (EPG) service information.

## D Load the TV listing data

- 1 Press **TIMER (GUIDE Plus+)** to exit GUIDE Plus+ system. Leave the recorder in 'standby' mode and turn 'on' the set-top box overnight to collect the TV listing data, this may take up to 24 hours.

**Note** If you tune to your Host Channel before going to 'standby' mode, this recorder will start downloading the TV listings data immediately.

- 2 Check the { Editor } screen the next day to ensure the source and programme numbers are matching for all channels.

## F Turn on the AV Receiver and fine-tune the speakers

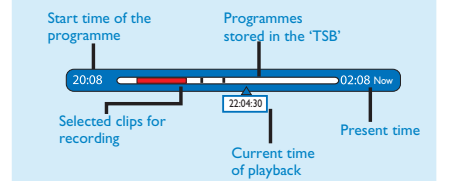
- 1 Press **STANDBY-ON** on the AV Receiver.
  - If you cannot hear the playback from the recorder, press **SOURCE** on the AV Receiver repeatedly until 'COAX IN' appears on the display panel.
- To adjust or fine-tune the speaker settings
- 2 Press and hold **PROGRAM** on the AV Receiver for more than five seconds.
  - 3 Press **LEFT** or **RIGHT** to toggle between 'CENTER DELAY', 'REAR DELAY', 'TEST TONE' and 'EXIT' setting options.
  - 4 Press **PROGRAM** to select an option.
  - 5 Rotate the **VOL** control to scroll through the various delay time options, then press **PROGRAM** to confirm your setting.
- Repeat steps 3-5 for other settings options.
  - 6 To exit the speaker setting mode, press **LEFT** or **RIGHT** until 'EXIT' appears.

# 3 Enjoy

## About the Time Shift Buffer (TSB)

Once you turn on the recorder, the selected TV programme will be stored in a temporary hard disk storage called Time Shift Buffer 'TSB'. The 'TSB' can store up to 6 hours of programmes temporarily.

Press **INFO** to display the Time Shift video bar.



### Notes:

- The contents in the time shift video bar will be cleared when you press **STANDBY ON**.
- The blue LED on the recorder will be lit up when the Time Shift Buffer is active or when you playback a recording from the hard disk drive.

## Watch TV – Pause live TV

Your Philips Recorder allows you to control the TV programme. You can **PAUSE** it as if you were in control of the live broadcast.

- 1 Turn on your recorder to the live TV mode and press **P +/-** to select a TV programme.
- To hear recorder playback from the AV Receiver, turn on the AV Receiver. If no sound, press **SOURCE** repeatedly to change the input source mode for the AV Receiver to 'COAX IN'.
- 2 Press **PAUSE LIVE TV** to suspend it.
- 3 Press **PAUSE LIVE TV** again to continue.
- 4 To return to live broadcast, press **LIVE TV**.

## About the internal hard disk drive

This recorder's hard disk drive can be used as a Media Jukebox, allowing you to store and playback your TV programmes, videos, music and photos files.

Press **HOME** on the remote control to access your contents stored in the { Hard Disk }.

# 3 Enjoy

## Record to hard disk

### A Record current TV programme

- 1 Press **REC** to start recording. It can record up to 6 hours.

**Note** To set the recording time length, press **REC** repeatedly to extend the recording time in 30-minute increments, up to 6 hours.

- 2 To stop the recording before the scheduled time, press **STOP**.

### B Mark a specific content in the Time Shift Buffer for recording



- 1 Press **left** or **right** to search for the scene where you want to record.

- 2 Press **REC** to start recording from here.

**Note** Pressing the **Red** button will cancel the recording.

- 3 Press **right** to search for the scene to end the recording, then press **STOP**.

**Note** The title will be marked in red and the recording will only take effect when you turn off the recorder.

### C Using the GUIDE Plus+ system

Make sure that the GUIDE Plus+ TV listing data download is completed.

- 1 Press **TIMER (GUIDE Plus+)**. It shows the list of TV programmes that are currently broadcast and the next 8 days of TV programmes.



- 2 Press **down** to select a TV channel.

#### Notes

- To see an overview of all the available channels, press the **Yellow** button on the remote control.
- To go directly to the previous day's or the next day's TV listing, press **left/right**.
- To scroll up or down a page, press **up/down**.

- 3 Press **left** or **right** to select a TV programme.

- 4 Press the **Red** button on the remote control to set the highlighted programme for recording.

**Note** You can store up to 25 programmes for recording.

## Copy TV programmes or files

### A Copy TV programmes from hard disk

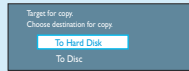
- 1 Insert a recordable DVD into the recorder.
- 2 Press **HDD LIST** on the remote control.
- 3 Select a title to copy and press the **Green** button on the remote control for **Copy**.
- 4 The making disc copy information appears. Press the **Green** button again to start copying.

**Note** It is not possible to copy the TV recordings to USB device.

### B Copy files from USB

You can only copy the data files (MP3, WMA, DivX and JPEG) from your USB device to the recorder's hard disk drive or recordable DVD.

- 1 Insert your USB device to the USB port at the front panel of the recorder.
- 2 Press **HOME** and select **{ USB }**.
- 3 Use **left/right/up/down** keys to reach the file you want to copy.
- 4 Press the **Green** button for **{ Copy }**.



- 5 Select the destination for copying and press **OK**.

**Note** If select **{ To Disc }**, insert an empty recordable DVD into the recorder.

- 6 Press **OK** again to start copying.

### C Copy files from Disc

Copy prohibited contents cannot be copied to this recorder.

- 1 Insert a CD/DVD into the recorder.
- 2 Press **HOME** and select **{ Disc Tray }**.
- 3 Use **left/right/up/down** keys to reach the title/file you want to copy.
- 4 Press the **Green** button for **{ Copy }**.



- 5 Select the destination for copying and press **OK**.

**Note** Only data files are able to copy to USB device.

- 6 Press **OK** again to start copying.

## Need help?

### User Manual

See the user manual that came with your Philips Recorder or AV Receiver

### Online

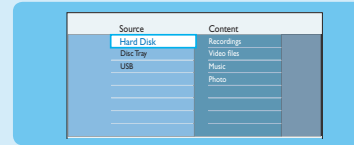
Register your product and get support at [www.philips.com/welcome](http://www.philips.com/welcome)



## Start playback

### A Playback from hard disk

- 1 Press **HOME**.



- 2 Select **{ Hard Disk }** and press **right**.

- 3 Select the contents type and press **right**.

- 4 Use **left/right/up/down** keys to reach the title/file you want to play and press **right** to start playback.

### B Playback from disc

- 1 Hold down **STOP** until the disc tray opens. Load a disc and close the disc tray.

- 2 Press **HOME** and select **{ Disc Tray }**.

- 3 Use **left/right/up/down** keys to reach the title/file you want to play and press **right** to start playback.

### C Playback from USB device

- 1 Insert the USB device to the USB port.

- 2 Press **HOME** and select **{ USB }**.

- 3 Use **left/right/up/down** keys to reach the contents list.

- 4 Select the contents type and press **right**.

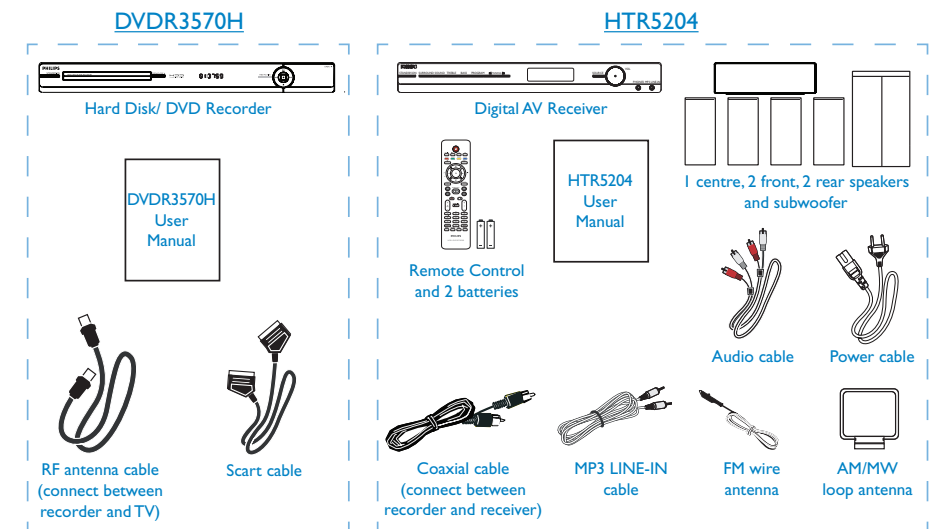
- 5 Select a data file (MP3, WMA, DivX and JPEG) and press **right** to start playback.

# Quick Start Guide



- 1 Connect
- 2 Set up
- 3 Enjoy

## What's in the box?



2007 © Koninklijke Philips N.V.  
All rights reserved.  
12 NC 3139 245 28092  
[www.philips.com](http://www.philips.com)

## Free Manuals Download Website

<http://myh66.com>

<http://usermanuals.us>

<http://www.somanuals.com>

<http://www.4manuals.cc>

<http://www.manual-lib.com>

<http://www.404manual.com>

<http://www.luxmanual.com>

<http://aubethermostatmanual.com>

Golf course search by state

<http://golfingnear.com>

Email search by domain

<http://emailbydomain.com>

Auto manuals search

<http://auto.somanuals.com>

TV manuals search

<http://tv.somanuals.com>