

wearable digital camera

user manual

key007/ 0078/ 0079

key008



PHILIPS

Download from [Www.Somanuals.com](http://www.somanuals.com). All Manuals Search And Download.

Contents

Quick start	3
Safety / Maintenance	4-5
Controls	6-7
Minimum computer system requirements	8
About KEY camera	8
Supplied accessories	9
Neck strap.....	9
Power supply	10
POWER indicator	11
Switching on/ off	12
MEMORY indicator	13
Taking pictures, lighting level	14
Transferring/ viewing pictures	15-18
Mass storage	18
Photo Manager	19
Troubleshooting	20-21
Technical data	22

© Koninklijke Philips Electronics N.V. 2003.

All rights reserved. Reproduction, copying, usage, modifying, hiring, renting, public performance, transmission and / or broadcasting in whole or in part is prohibited without the written consent of Philips.

Thank you for buying this Philips wearable digital camera. To get started, follow the steps as shown.

1 Charging

- Charge up your camera (3 hours) before using it. Detach the USB cover and connect the camera to your computer's USB port. (**Windows 98** users, please install required drivers first*). Your computer should be switched on. While charging the **POWER** (green) indicator blinks.

2 Switch on & Snap

- Now your camera is ready for action - simply turn the lens cap clockwise to power ON. Hold the camera upright and frame your subject through the viewfinder. Press the shutter button.

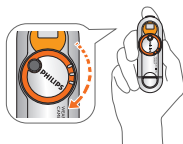


3 Transfer

- Turn your camera OFF and connect it to your computer's USB port.

Open **Windows Explorer*** and drag and drop your pictures from your camera to your desired destination folder. Alternatively, use Photo Manager to transfer, enhance, edit and organize your pictures. To install **Photo Manager** insert the by-packed CD into your computer's CD-ROM drive.

The installation menu is automatically launched for first time users.



Find more information on the by-packed CD-ROM or visit

www.philips.com/support

*CAUTION!

For Windows 98 users only:

WHEN CONNECTING THE CAMERA FOR THE VERY FIRST TIME TO CHARGE UP/ TRANSFER FILES, MAKE SURE YOU ONLY DO SO AFTER YOU HAVE INSERTED THE SUPPLIED CD-ROM INTO THE CD-ROM DRIVE FOR INSTALLATION OF THE REQUIRED DRIVERS.

Safety / maintenance

Safety & satisfaction

- To enjoy your Philips product, please read and operate the set according to the instructions inside our user manual (on the CD-ROM.)

Take care when using KEY camera

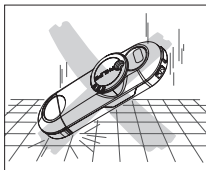
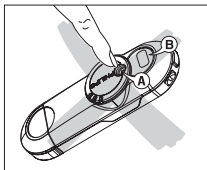
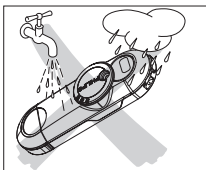
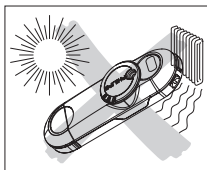
- **Traffic safety:** do not use while driving or cycling as you may cause an accident.
- **Child safety:** **KEY** camera neck strap is not a toy. Special care should be taken if handled by young children. Avoid placing the neck strap around the neck of a child to prevent strangulation!

To avoid damage or malfunction:

- this product is **not waterproof**: do not allow your camera to be submersed in water, avoid exposing the USB socket to water. Water entering the camera may cause major damage and rusting.
- do not use any **cleaning agents** containing alcohol, ammonia, benzene, or abrasives as these may harm the set.
- **avoid touching the lens (A) and viewfinder (B)** with your fingers. To remove fingerprints, use a soft damp cloth.
- prevent damage to your eyes: **do not look at the sun through the viewfinder!**
- Avoid sudden changes of temperature as this may cause condensation on the lens and viewfinder. Allow the camera to adjust to the surrounding temperature.
- do not drop your camera or allow objects to fall on camera. Strong shocks and vibrations may cause malfunction.
- active **mobile phones & strong magnetic fields** in the vicinity may cause interference.

Safety / maintenance

- the supplied software CD-ROM is not an audio CD. Playing CD-ROMs on audio equipment may damage your audio equipment!



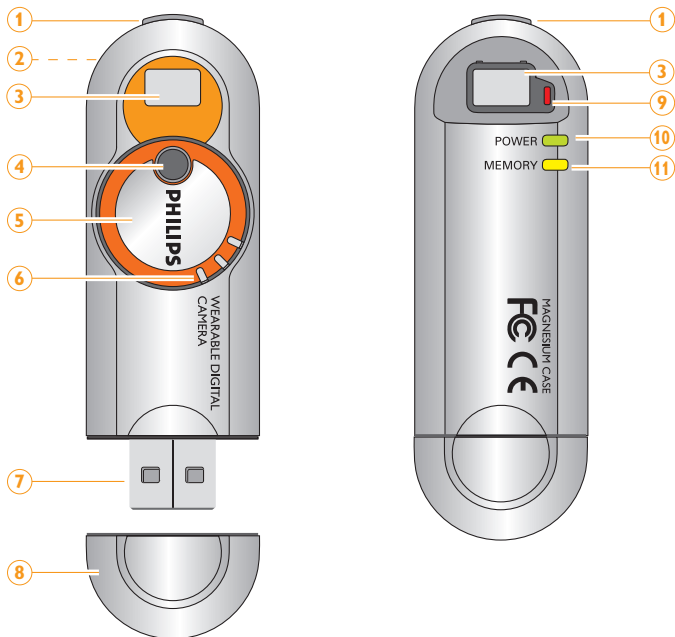
Environmental information

We have reduced the packaging to its minimum and made it easy to separate into mono materials: **PET, paper** and **aluminum foil**.

Your set consists of material which can be recycled if disassembled by a specialized company. Please observe the local regulations to dispose of packaging, and old equipment.

Controls

KEY007/0078/0079
KEY008



- ① **shutter button**
press halfway down to help check lighting levels. Press all the way down to take your picture.
- ② **metal strap hole**
attach the supplied neck strap here.
- ③ **viewfinder window**
to help frame your picture subject
- ④ **lens**
automatically opens when power on. The lens is closed when the power is off.
- ⑤ **power on/ off**
turn clockwise to switch on,
turn anti-clockwise to switch off.
- ⑥ **grip**
place your finger/ thumb here to turn the power control.
- ⑦ **USB port**
Connect to your computer's USB port to charge the camera/ transfer files.
- ⑧ **USB cover**
detach the protective USB cover to reveal the camera's USB port.
- ⑨ **Light level sensor**
When you press the shutter button halfway, the sensor lights up red/ blinks/ remains unlit according to surrounding light level conditions.
- ⑩ **POWER**
indicator lights up green/ blinks according to power status/ file transfer.
- ⑪ **MEMORY**
indicator lights up yellow/ blinks/ remains unlit according to the available memory on the camera.



TIP:

- Make sure the lens is not obstructed / covered when taking snaps!

***The model and production numbers can be found next to the USB port
(please remove the USB cover to see)***

Minimum computer system requirements

Windows system requirements

- Pentium® MMX 166MHZ processor or better
- USB port with Windows® 98 / Me / 2000 / XP
- 96MB RAM
- 50MB free hard disk space
- CD ROM drive
- video display card

CAUTION!

Computers that were upgraded from Windows 95 may not have USB compatibility!

For Windows 98 users only:

- WHEN CONNECTING THE CAMERA FOR THE VERY FIRST TIME TO CHARGE UP/ TRANSFER FILES, MAKE SURE YOU ONLY DO SO AFTER YOU HAVE INSERTED THE SUPPLIED CD-ROM INTO THE CD-ROM DRIVE FOR INSTALLTION OF THE REQUIRED DRIVERS.

Mac system requirements

- G3 or better
- Mac OS 9 - X

About KEY camera

KEY camera is a solid state, wearable, digital camera:

- captures VGA (640 x 480) resolution still images
- stores hundreds of still images in JPEG format
- 1.3 Mega pixel output when you use with the supplied picture enhancement software
- transfers image files using **Windows File Manager** or **Windows Explorer**, when the camera is connected via USB to your computer
- directly powered through your computer during file transfer to the camera.

Supplied accessories

Make sure these items are in the package. If any item is missing, please contact your dealer.

1x CD-ROM (**Photo Manager** software & user manuals)

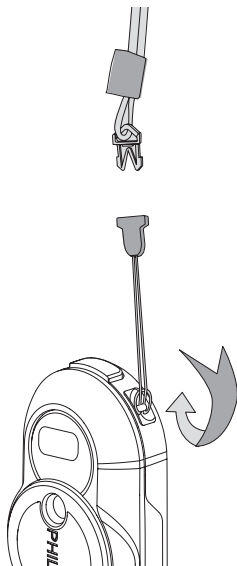
1x Quick Start Guide

1x neck strap

1x Safety & Warranty booklet

Neck strap

Thread the neck strap through the hole as shown.



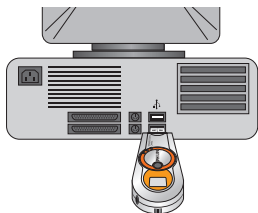
Power supply

This camera is powered by a built-in USB rechargeable lithium battery which you can charge direct from your computer.



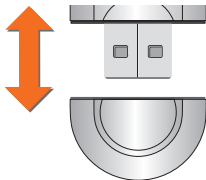
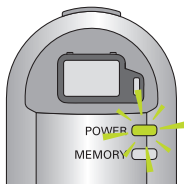
TIP:

- When you use the camera for the very first time, you'll need to charge the battery before taking pictures.



USB rechargeable battery

- 1 Check the camera is in the power off position. Detach the USB cover.
- 2 Turn on your computer.
- 3 Connect the camera's USB port to the USB port of your computer.
 - You will hear a double beep. Charging starts immediately. While charging the **POWER** (green) indicator blinks.
 - Make sure you leave your PC switched on during charging. After approx. 3 hours, the battery is fully charged.
- 4 Disconnect the camera and replace the USB cover.



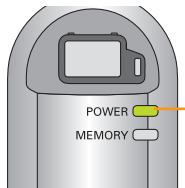
TIP:

- When you detach the USB cover, keep it in a safe place.
- To avoid damaging the USB port, always replace the USB cover when not connecting to your computer.
- During USB connection/ battery charging, by default taking pictures is not possible.
- **For Mac users:** When connecting the camera to your computer, avoid using the USB connection on your Mac keyboard as it doesn't have sufficient power to detect your camera.

POWER indicator

The **POWER** indicator lights up **green** according to battery power level.

Battery power	POWER indicator
fully charged	lit
low*	blinks
empty	unlit



fully charged



TIP:

* when the camera is connected to your computer for battery charging/ file transfer, the POWER indicator also blinks.

**batteries contain chemical substances,
so they should be disposed of properly.**

Switching On/ Off

Switching on

Turn the power control 90° clockwise as shown.

- You will hear a click. The **POWER** (green) indicator lights up and you will hear a double beep. **PHILIPS** is in the vertical position and the lens is revealed.



Power off

Switching off manually

Turn the power control 90° anti-clockwise as shown.

- You will hear a click. The **POWER** light goes out. **PHILIPS** is in the horizontal position and the lens is covered for protection.



TIP:

- Always turn off your camera when not taking pictures. This will both save energy and prevent photos being accidentally taken.



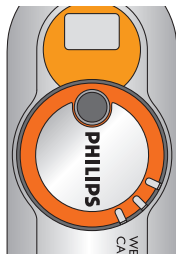
Auto-power down

To help save battery power, the camera automatically powers down after 60 seconds if you are not taking pictures.



TIP:

- If you want to resume taking pictures after auto-power down, you'll need to 'wake up' the camera again:
 - 1 Manually turn the power control anti-clockwise (off position).
 - 2 Turn clockwise to power on position.



Power on

MEMORY indicator

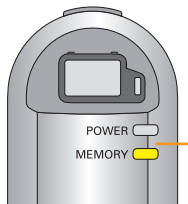
When using the camera, check the **MEMORY** indicator for the free memory available:

Memory size

over 3MB
less than 3MB
less than 100KB

MEMORY indicator

lights up yellow
blinks
unlit



over 3MB space available

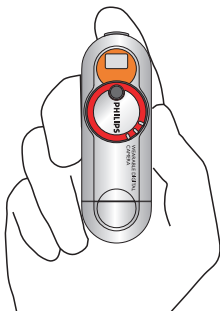


TIP:

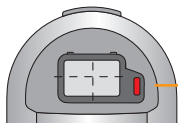
- **Memory low!** When the **MEMORY** indicator is unlit, your camera cannot take pictures. To free the memory, you will need to transfer and store your pictures /files on your computer.

Taking pictures, lighting level

- 1 Hold the camera upright in your hand.
- 2 **To frame your pictures**
Look through the viewfinder to frame your subject inside the window.
- 3 **To take your pictures**
Keep the camera steady and gently press the shutter button halfway down.
→ **KEY** detects the light level conditions.
Check the light level sensor to see whether your surrounding has sufficient light for a good picture.



Press



Low lighting conditions!

<u>Light level condition</u>	<u>Sensor response</u>
good	unlit
low	blinks red
poor	lit

- 4 Press the shutter button all the way down to capture and store your picture.
→ **KEY** camera beeps when a picture is taken.



TIP:

- For best results, check the status of all 3 indicators (including POWER and MEMORY) on the camera when taking pictures.
- Make sure the lens is not obstructed / covered when taking snaps!

Transferring / viewing pictures

CAUTION!

Windows 98 users only

WHEN CONNECTING THE CAMERA FOR THE VERY FIRST TIME TO CHARGE UP/ TRANSFER FILES, MAKE SURE YOU ONLY DO SO AFTER YOU HAVE INSERTED THE SUPPLIED CD-ROM INTO THE CD-ROM DRIVE FOR INSTALLATION OF THE REQUIRED DRIVERS.

When you connect the camera to your computer via the USB port, your computer operating system will recognize **KEY** camera as a USB Mass Storage Device (MSD).

KEY camera image files are stored in JPEG format as follows:

\\DCIM\100PHILIPS\KEY7xxxx.jpg (for KEY 007/0078/0079 models)

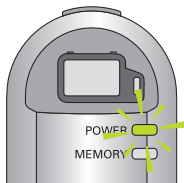
\\DCIM\100PHILIPS\KEY8xxxx.jpg (for KEY 008 models)

where xxxx is a JPEG file number (0001 to 9999).

Once you have the files to your computer, you can use normal file operations to e.g. copy, delete, rename your files.

Transferring/ viewing pictures

- 1 Detach the USB cover.
- 2 Connect the camera's USB socket to the USB port of your computer.
→ The **POWER** indicator blinks.
- 3 For details, please see the next pages of this chapter for PC and Mac users respectively.
- 4 After viewing, unplug the camera from the USB port.
- 5 Replace the USB cover.

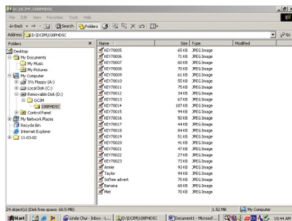


Transferring / viewing pictures

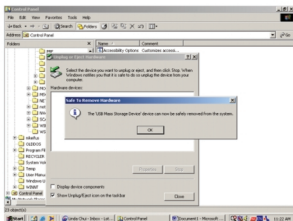
For PC users

When connected via the USB, the camera is detected and automatically located as **Removable Disk/ Device**.

- 1 Launch **Windows File Manager** or **Windows Explorer** to access the **Removable Disk**.




- 2 Click onto **Removable Disk → DCIM → 100PHDSC** to access your pictures.
- 3 In **Windows Explorer**, click **Thumbnails** to see the picture overview.
- 4 Click on the file you want to open.
- 5 When you have finished viewing your files, click the hardware icon  at the bottom of the screen, and follow the screen instructions.
- 6 When the **Safe to Remove Hardware** dialogue box appears, click **OK**.



Transferring / viewing pictures


For Mac users

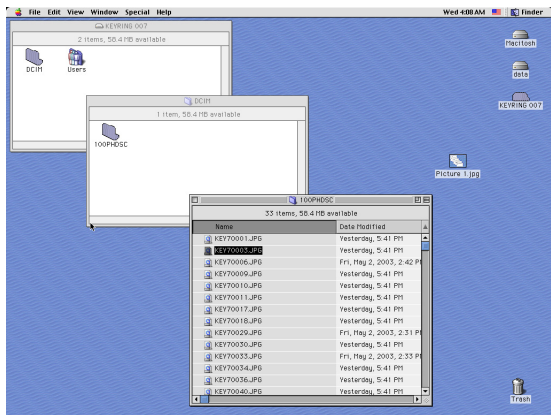
When connected via the USB, the camera is detected and shown as a new icon  named **KEYRING00X** on your desktop screen (where **X** refers to your model number).





TIP:

– When connecting the camera to your computer, avoid using the USB connection on your Mac keyboard as it doesn't have sufficient power to detect your camera.

- 1 Click onto  to access the **Removable Disk**.
- 2 Click on **DCIM → 100PHDSC** to access your pictures.
- 3 Click on the file you want to open.



- 4 When you have finished viewing your files, drag  to the  **Trash** icon on your desktop.

Mass storage



TIP:

- Transferring and deleting pictures from your camera via your computer helps free up memory space on your camera for more new pictures.
- Check the **MEMORY** indicator when taking pictures on your camera (see page 13).
- When connecting the camera to your computer, avoid using the USB connection on your Mac keyboard as it doesn't have sufficient power to detect your camera.

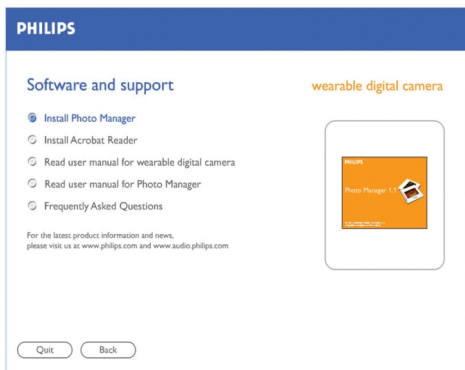
Using your KEY camera as a Mass Storage Device


KEY camera can also function as mass storage device for:

- conveniently transferring other files on your camera, such as **Word** documents, **Powerpoint** presentations, PDFs, etc.
- transferring and sharing files (copy, transfer, etc.) from computer to computer.

About Photo Manager *(for Microsoft Windows OS users only)*

- **Photo Manager** is ideal for organizing the photos that are transferred from your digital camera to your computer.
 - Allows you to categorize, move, copy and edit your photos in an intuitive, user-friendly environment.
- 1 Install the **Photo Manager** software from the installation CD-ROM onto your computer.



- After installation, the Photo Manager icon appears on your desktop.
 - On your task tray bar, the **Monitor Program**  icon appears. This will detect your camera and launch Photo Manager automatically each time you connect your camera to your PC.
- 2 Please refer to the operating instructions in the **Photo Manager** user manual.

Troubleshooting

If a fault occurs, first check the points listed below before taking the set for repair. If you are unable to remedy a problem by following these hints, consult your dealer or service center.

WARNING!

Do not dismantle the unit as there is a risk of electric shock! Under no circumstances should you try to repair the set yourself, as this will invalidate the warranty.

No picture is taken, but I press the shutter button all the way down

- Built-in battery drained.
 - Charge the battery (see page 10)
- Camera memory capacity full.
 - Transfer pictures / other files to your computer to free memory space (see page 15-17)
- Camera is connected to the PC's USB port
 - Unplug the camera from the USB port
- Poor light condition
 - Check the surrounding light conditions
- The camera may have automatically powered off.
 - Switch the camera off and switch on again (see page 12)

No reaction to controls

- Built-in battery drained.
 - Charge the battery (see page 10)

Unusually slow rate of file transfer to/ from my camera

- Win XP OS operating on non-optimal Device Manager setting.
 - With your camera connected to your PC, modify your default setting by clicking on the following:
- 1 From the taskbar, click **Start → Settings → Control Panel → System → System Properties → Hardware → Device Manager → Disk drives**.
 - 2 Select and double click on your camera model name **Philips Keyring 0XX USB Device** to enter the **Philips Keyring XXX USB Device Properties** dialogue box (where **X** refers to your model number).

- 3 Select the field **Policies → Optimize for performance → OK**.
- 4 Transfer your files again.



TIP:

After selecting the **Optimize for performance** option, please click the Safe Removal icon  at the bottom of the screen whenever you unplug the camera from your PC.

USB does not seem to work

- USB connection loose
 - Check camera is securely connected and connections to your computer are correct.
- Wrong Windows version.
 - Your computer must be equipped with Windows 98 or better (see page 8).
- USB driver not installed.
 - **For Windows 98 users only**, check you have installed the USB driver provided from the installation CD-ROM (see page 3).
- Camera connected to Mac keyboard.
 - Avoid using the USB connection on your Mac keyboard as it doesn't have sufficient power to detect your camera. Connect on e.g. the rear of your Mac's CPU instead.

Pictures are poor/ blurred/ too dark

- Picture taken in low/ poor lighting.
 - Check the light level sensor when taking pictures. (see page 14)
- Lens obstructed/ covered.
 - Be careful where you place your fingers! (see page 14)
- Camera shook during the shot.
 - Keep a steady hand (see page 14)

For the latest FAQ, product information & news visit:

<http://www.philips.com/support> or

<http://www.audio.philips.com>

Technical data

sensor resolution	307,200 pixels
optical image size	1/4"
optical lens	fixed focus length
viewfinder LED indicators	plastic with red LED indication red (light level sensor) green (POWER) yellow (MEMORY)
built-in battery PC interface	rechargeable lithium (via USB) USB 1.1
internal memory capacity for KEY007/ 0078/ 0079 model number for KEY008 model number	64MB 128MB
case material	magnesium camera body, plastic USB cover
Power up time	under 3 seconds
auto power off	60 seconds
shot to shot time	under 2.5 seconds
dimensions	86 mm x 28 mm x 18 mm
weight	30 g

PHILIPS reserves the right to make design and specification changes for product improvement without prior notice.

Meet Philips at the Internet

<http://www.philips.com>

<http://www.audio.philips.com>



KEY007

KEY0078

KEY0079

KEY008



Free Manuals Download Website

<http://myh66.com>

<http://usermanuals.us>

<http://www.somanuals.com>

<http://www.4manuals.cc>

<http://www.manual-lib.com>

<http://www.404manual.com>

<http://www.luxmanual.com>

<http://aubethermostatmanual.com>

Golf course search by state

<http://golfingnear.com>

Email search by domain

<http://emailbydomain.com>

Auto manuals search

<http://auto.somanuals.com>

TV manuals search

<http://tv.somanuals.com>