

Active Crystals

PHILIPS

SWAROVSKI

BREEZE
FASHION HEADPHONES

FASHIONABLE PENDANT FOR WIRELESS CALLS

Bluetooth Mono Headset

Functionality at its ultimate. Fantasy at its brightest. From now on, a sensational connection between Philips and Swarovski brings technology to new heights of enjoyment. Its name: Active Crystals.

FINEST BEAUTY

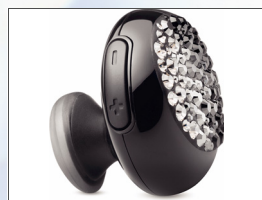
- Fully faceted, exclusive cut Silver Shade crystal dome

PREMIUM SOUND PERFORMANCE

- Perfect in-ear seal blocks external noise
- The precise design directs high definition sound
- Customised crystal design for unparalleled acoustics

ULTIMATE WEARING COMFORT

- ultra-soft silicon caps sit comfortably in your ears
- This ergonomic design will fit perfectly into your ear canal



PHILIPS AND SWAROVSKI

FASHION HEADPHONES – BREEZE SWB9000/00

SPECIFICATIONS

PACKAGING DIMENSIONS

- EAN: 87 12581 42975 1
- Number of products included: 1
- Packaging type: Box
- Packaging dimensions (W x H x D):
9.6 x 7.6 x 9.5 cm
- Net weight: 0.015 kg
- Gross weight: 0.185 kg
- Tare weight: 0.17 kg

OUTER BOX

- EAN: 87 12581 43086 3
- Number of consumer packages: 16
- Outer carton (L x W x H):
41.6 x 22.2 x 22.4 cm
- Net weight: 0.24 kg
- Gross weight: 4.044 kg
- Tare weight: 3.804 kg

INNER BOX

- EAN: 87 12581 43087 0
- Number of consumer packages: 4
- Inner carton (L x W x H):
21 x 20.4 x 10 cm
- Net weight: 0.06 kg
- Gross weight: 0.913 kg
- Tare weight: 0.853 kg

Issue date 2009-04-11
Version: 2.0.8
12 NC: 8670 000 40577
EAN: 87 12581 42975 1

© 2009 Koninklijke Philips Electronics N.V.
and Swarovski AG. All Rights reserved.

Specifications are subject to change without
notice.
Trademarks are the property of Koninklijke
Philips Electronics N.V., Swarovski AG or their
respective owners.

www.active-crystals.com

Free Manuals Download Website

<http://myh66.com>

<http://usermanuals.us>

<http://www.somanuals.com>

<http://www.4manuals.cc>

<http://www.manual-lib.com>

<http://www.404manual.com>

<http://www.luxmanual.com>

<http://aubethermostatmanual.com>

Golf course search by state

<http://golfingnear.com>

Email search by domain

<http://emailbydomain.com>

Auto manuals search

<http://auto.somanuals.com>

TV manuals search

<http://tv.somanuals.com>