



**Streamium PC Link** connects your TV to your PC so you can access music, videos and photos on your hard drive.



## GETTING STARTED

### To use PC Link, you need:

- 1 Your Streamium connected to your TV and home network.
- 2 Philips Media Manager software installed on your PC.
- 3 Music, video or picture files on your PC hard drive.



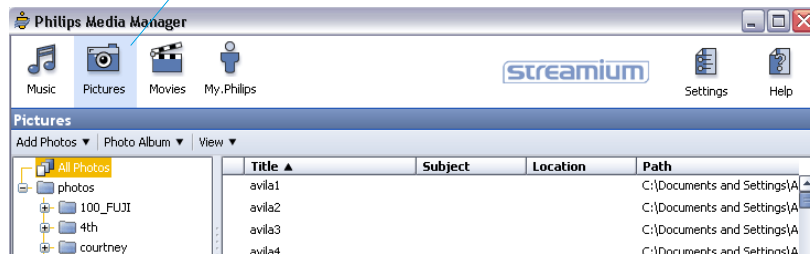
### Installing Philips Media Manager

Philips Media Manager lets you choose and organize the media files on your PC that you want to play on your home entertainment system. The newest version is available at [My.Philips.com](http://My.Philips.com).

- 1 Insert the Philips Media Manager CD into your PC's CD drive. It will start automatically.
- 2 Select *Install Media Manager* and follow the prompts from the installation wizard.
- 3 Select *Done* and Philips Media Manager automatically starts.



Once installed, Philips Media Manager is available on your Windows Start menu. Open it anytime you want to add music, video or image files from your PC.



### Supported Media Formats



#### MUSIC

MP3  
MP3pro  
PCM



#### PICTURES

JPG (RGB)  
GIF  
BMP




#### MOVIES

MPG1  
MPG2  
MPG4  
DivX 3  
DivX 5  
XviD

Media will not stream properly if the bitrate is too high. Windows Media and Real formats are currently not supported.

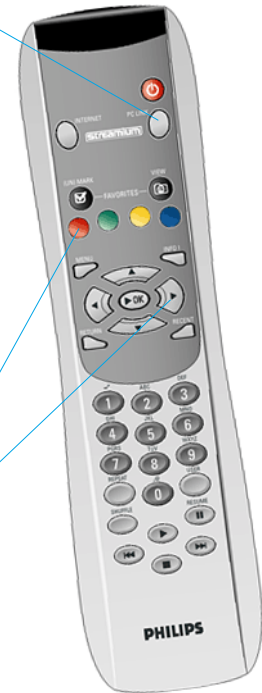
### ADDING MEDIA FILES

- 1 Open Philips Media Manager from your Windows Start menu. 
- 2 Click **Music**, **Pictures** or **Movies**.
- 3 Select **Add...** to browse your hard drive and find audio, video or image files.
- 4 Select **Add/Configure Watch Folders** to scan for new files or to choose directories you want Media Manager to automatically check for updates. (Large files and folders with hundreds of pictures take extra time to load.)



### CONNECTING TO PC LINK

- 1 Turn on your TV and press the **PC Link** button on the remote control. You should see a blue screen when it starts. (If not, you may need to click **AUX** or **SOURCE** on your TV's remote control.) Your Streamium will now search the network for Philips Media Manager (or other available UPnP servers if you have installed them).
- 2 Select the Philips Media Manager (PMM) on the screen menu and choose **Music**, **Photos** or **Movies**.



Streamium  
SL300i/SL400i  
remote



#### Photos

Choose **Photos** on your TV's Streamium screen to select from the pictures you made available. Use the red, yellow and blue remote buttons to view full-screen, set a slide show or rotate the image. Use the arrow keys to scroll.



#### Videos

Select **Movies** on your TV's Streamium screen and use the arrow keys on the remote to scroll through available video files. To add or remove available movies, go back to Philips Media Manager on your PC.



#### Music

Select **Music** to scroll through available audio files. Use the red key on your remote to see available song information and the yellow key to set visual effects. You can also access your MusicMatch files if you have Jukebox installed.

For more detailed instructions on using the remote control, see the complete product manual at [philips.com/streamium](http://philips.com/streamium)

## Free Manuals Download Website

<http://myh66.com>

<http://usermanuals.us>

<http://www.somanuals.com>

<http://www.4manuals.cc>

<http://www.manual-lib.com>

<http://www.404manual.com>

<http://www.luxmanual.com>

<http://aubethermostatmanual.com>

Golf course search by state

<http://golfingnear.com>

Email search by domain

<http://emailbydomain.com>

Auto manuals search

<http://auto.somanuals.com>

TV manuals search

<http://tv.somanuals.com>