

Register your product and get support at
www.philips.com/welcome

FWM387/12



EN User manual

DA Brugervejledning

DE Benutzerhandbuch

ES Manual del usuario

FR Mode d'emploi

IT Manuale utente

NL Gebruiksaanwijzing

SV Användarhandbok

PHILIPS

Contents

1 Important	2	7 Listen to radio	17
Safety	2	Tune to a radio station	17
Notice	3	Program radio stations automatically	17
		Program radio stations manually	17
		Select a preset radio station	17
		FM stations with RDS	17
2 Your Mini Hi-Fi System	5	8 Record	18
Introduction	5	Auto record from CD to tape	18
What's in the box	5	Record from radio to tape	18
Overview of the main unit	6		
Overview of the remote control	8	9 Other features	19
		Set the alarm timer	19
		Set the sleep timer	19
		Karaoke	19
3 Get started	10	10 Product information	20
Connect speakers	10	Specifications	20
Connect FM antenna	10	USB playability information	20
Connect MW antenna	10	Supported MP3 disc formats	21
Connect power	11	Maintenance	21
Prepare the remote control	11		
Auto install radio stations	11	11 Troubleshooting	22
Set clock	12		
Turn on	12		
4 Play	13		
Play disc	13		
Play from USB	13		
Play tape	13		
Play from an external device	14		
5 Play options	15		
Repeat and random play	15		
Program tracks	15		
Display play information	15		
6 Adjust volume level and sound effect	16		
Adjust volume level	16		
Mute sound	16		
Boost sound power	16		
Select a preset sound effect	16		
Enhance bass	16		
Incredible surround	16		
Customize sound for room acoustics	16		

1 Important

Safety

- ① Read these instructions.
- ② Keep these instructions.
- ③ Heed all warnings.
- ④ Follow all instructions.
- ⑤ Do not use this apparatus near water.
- ⑥ Clean only with dry cloth.
- ⑦ Do not block any ventilation openings. Install in accordance with the manufacturer's instructions.
- ⑧ Do not install near any heat sources such as radiators, heat registers, stoves, or other apparatus (including amplifiers) that produce heat.
- ⑨ Protect the power cord from being walked on or pinched, particularly at plugs, convenience receptacles, and the point where they exit from the apparatus.
- ⑩ Only use attachments/accessories specified by the manufacturer.
- ⑪ Use only with the cart, stand, tripod, bracket, or table specified by the manufacturer or sold with the apparatus. When a cart is used, use caution when moving the cart/apparatus combination to avoid injury from tip-over.
- ⑫ Unplug this apparatus during lightning storms or when unused for long periods of time.
- ⑬ Refer all servicing to qualified service personnel. Servicing is required when the apparatus has been damaged in any way, such as power-supply cord or plug is damaged, liquid has been spilled or objects have fallen into the apparatus, the apparatus has been exposed to rain or moisture, does not operate normally, or has been dropped.
- ⑭ Battery usage **CAUTION** – To prevent battery leakage which may result in bodily injury, property damage, or damage to the unit:
 - Install all batteries correctly, + and - as marked on the unit.
 - Do not mix batteries (old and new or carbon and alkaline, etc.).
 - Remove batteries when the unit is not used for a long time.
- ⑮ Apparatus shall not be exposed to dripping or splashing.
- ⑯ Do not place any sources of danger on the apparatus (e.g. liquid filled objects, lighted candles).
- ⑰ This product may contain lead and mercury. Disposal of these materials may be regulated due to environmental considerations. For disposal or recycling information, please contact your local authorities or the Electronic Industries Alliance: www.eiae.org.
- ⑱ Where the MAINS plug or an appliance coupler is used as the disconnect device, the disconnect device shall remain readily operable.



Warning

- Never remove the casing of this apparatus.
- Never lubricate any part of this apparatus.
- Never place this apparatus on other electrical equipment.
- Keep this apparatus away from direct sunlight, naked flames or heat.
- Never look into the laser beam inside this apparatus.
- Ensure that you always have easy access to the power cord, plug or adaptor to disconnect this apparatus from the power.

Notice



This product complies with the radio interference requirements of the European Community.

This product complies with the requirements of the following directives and guidelines: 2004/108/EC + 2006/95/EC.

Any changes or modifications made to this device that are not expressly approved by Philips Consumer Lifestyle may void the user's authority to operate the equipment.



The making of unauthorized copies of copy-protected material, including computer programs, files, broadcasts and sound recordings, may be an infringement of copyrights and constitute a criminal offence. This equipment should not be used for such purposes.

Recycling



Your product is designed and manufactured with high quality materials and components, which can be recycled and reused. When you see the crossed-out wheel bin symbol attached to a product, it means the product is covered by the European Directive 2002/96/EC:



Never dispose of your product with other household waste. Please inform yourself about the local rules on the separate collection of electrical and electronic products. The correct disposal of your old product helps prevent potentially negative consequences on the environment and human health.

Your product contains batteries covered by the European Directive 2006/66/EC, which cannot be disposed of with normal household waste.

When you see the crossed-out wheel bin symbol with the chemical symbol 'Pb', it means that the batteries comply with the requirement set by the directive for lead:



Please inform yourself about the local rules on separate collection of batteries. The correct

disposal of batteries helps prevent potentially negative consequences on the environment and human health.

Environmental information

All unnecessary packaging has been omitted. We have tried to make the packaging easy to separate into three materials: cardboard (box), polystyrene foam (buffer) and polyethylene (bags, protective foam sheet.) Your system consists of materials which can be recycled and reused if disassembled by a specialized company. Please observe the local regulations regarding the disposal of packaging materials, exhausted batteries and old equipment.



Windows Media and the Windows logo are trademarks, or registered trademarks of Microsoft Corporation in the United States and/or other countries.

This apparatus includes this label:



Norge

Typeskilt finnes på apparatens underside.

Observer: Nettbryteren er sekundært innkopleet. Den innebygde nettdelen er derfor ikke frakopleet nettet så lenge apparatet er tilsluttet nettkontakten.

For å redusere faren for brann eller elektrisk støt, skal apparatet ikke utsettes for regn eller fuktighet.

2 Your Mini Hi-Fi System

Congratulations on your purchase, and welcome to Philips! To fully benefit from the support that Philips offers, register your product at www.Philips.com/welcome.

Introduction

With this unit, you can enjoy audio from discs, tapes, USB devices, external devices, or radio stations.

For your convenience, you can load up to 3 discs at once.

To enrich sound, this unit offers you these sound effects:

- MAX sound for instant power boost
- Digital Sound Control (DSC)
- Dynamic Bass Boost (DBB)
- Incredible surround (IS)
- Virtual Ambience-based Control (VAC)

The unit supports the following media formats:

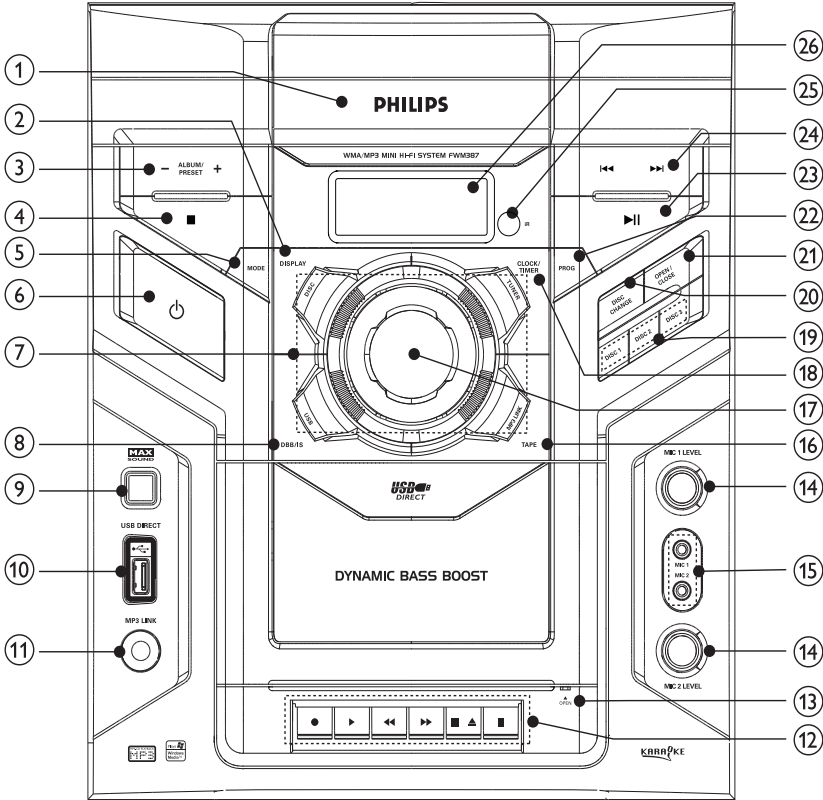


What's in the box

Check and identify the contents of your package:

- Main unit x 1
- AC power cable x 1
- Loudspeaker box x 2
- Remote control with 2 AAA batteries
- FM wire antenna x 1
- MW loop antenna x 1
- MP3 link cable x 1

Overview of the main unit



① Disc compartment door

② DISPLAY

- Select display information.

③ ALBUM/PRESET +/-

- Skip to the previous/next album.
- Select a preset radio station.
- Adjust time.
- Select 12 hour or 24 hour format.

④ ■

- Stop play or erase a program.

⑤ MODE

- Select repeat play or random play.

⑥ ⏻

- Turn on the unit, switch to standby mode, or switch to Eco Power Standby.

⑦ Source selection keys

- Select a source.

⑧ DBB/IS

- Turn on or off dynamic bass enhancement.
- Turn on or off incredible surround.

⑨ MAX SOUND

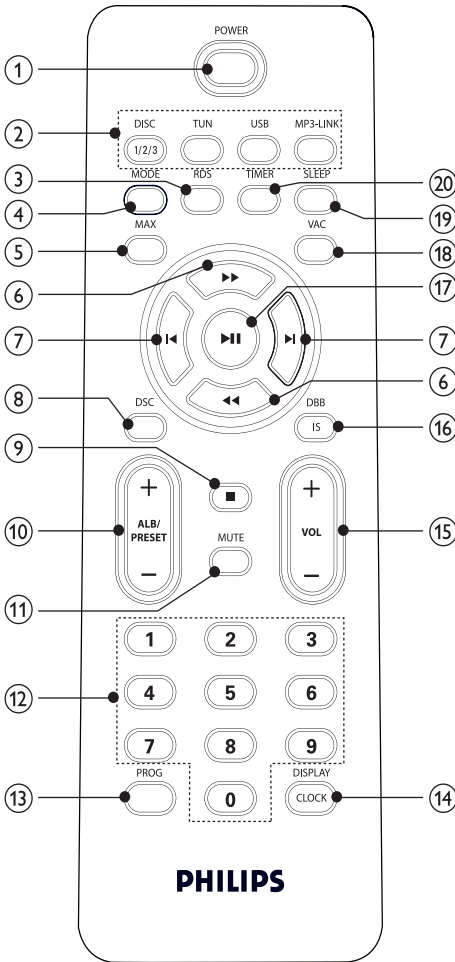
- Turn on or off instant power boost for sound.

⑩ USB DIRECT

- Jack for a USB mass storage device.

- ⑪ **MP3 LINK**
- Audio input jack (3.5mm) for an external audio device.
- ⑫ **Tape deck operation**
- ●
Start to record.
 - ▶
Start tape play.
 - ◀▶▶
Fast rewind/wind the tape.
 - ■▲
Stop the tape play or open the tape door.
 - ||
Pause tape play or pause recording.
- ⑬ **OPEN▲**
- Pull to open the tape button cover.
- ⑭ **MIC LEVEL 1/2**
- Adjust microphone volume.
- ⑮ **MIC 1/2**
- Jack for a microphone.
- ⑯ **TAPE**
- Select the tape source.
- ⑰ **VOLUME**
- Adjust volume.
- ⑱ **CLOCK/TIMER**
- Set the clock.
 - Set the alarm timer.
- ⑲ **DISC 1/2/3**
- Select a disc.
- ⑳ **DISC CHANGE**
- Change a disc.
- ㉑ **OPEN/CLOSE**
- Open or close the disc compartment.
- ㉒ **PROG**
- Program tracks.
 - Program radio stations.
- ㉓ ▶||
- Start or pause play.
- ㉔ ◀◀▶▶
- Skip to the previous/next track.
 - Search within a track/ disc/USB.
 - Tune to a radio station.
 - Adjust time.
- ㉕ iR
- Remote sensor.
- ㉖ **Display panel**
- Show current status.

Overview of the remote control



- ① **POWER**
 - Turn on the unit, switch to standby mode, or switch to Eco Power Standby.
- ② **Source selection keys**
 - Select a source.
- ③ **RDS**
 - Select RDS broadcast information.

- ④ **MODE**
 - Select repeat play or random play.
- ⑤ **MAX**
 - Turn on or off instant power boost for sound.
- ⑥ **◀▶▶▶**
 - Search within a track/ disc/USB.
 - Tune to a radio station.
- ⑦ **◀▶▶▶**
 - Skip to the previous/next track.
 - Adjust time.
- ⑧ **DSC**
 - Select a preset sound equalizer setting.
- ⑨ **■**
 - Stop play or erase a program.
- ⑩ **ALB/PRESET+/-**
 - Skip to the previous/next album.
 - Select a preset radio station.
 - Adjust time.
- ⑪ **MUTE**
 - Mute volume.
- ⑫ **Numeric keypad**
 - Select a track from a disc directly.
- ⑬ **PROG**
 - Program tracks.
 - Program radio stations.
- ⑭ **DISPLAY/CLOCK**
 - Select display information.
 - Set the clock.
- ⑮ **VOL +/-**
 - Adjust volume.
- ⑯ **DBB/IS**
 - Turn on or off dynamic bass enhancement.
 - Turn on or off incredible surround.
- ⑰ **▶▶▶▶**
 - Start or pause play.

- ⑱ **VAC**
 - Select an ambience-based equaliser setting.
- ⑲ **SLEEP**
 - Set the sleep timer.
- ⑳ **TIMER**
 - Set the alarm timer.

3 Get started

! Caution

- Use of controls or adjustments or performance of procedures other than herein may result in hazardous radiation exposure or other unsafe operation.

Always follow the instructions in this chapter in sequence.

If you contact Philips, you will be asked for the model and serial number of this apparatus. The model number and serial number are on the back of the apparatus. Write the numbers here:

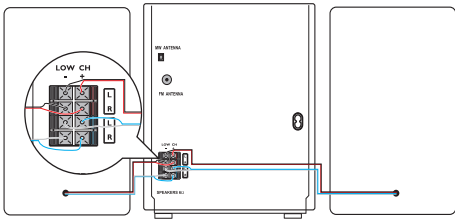
Model No. _____

Serial No. _____

Connect speakers

☰ Note

- For optimal sound, use the supplied speakers only.
- Connect only speakers with impedance that is the same or higher than the supplied speakers. (see 'Speakers' on page 20)



☰ Note

- Ensure that the colors of the speaker wires and terminals are matched.

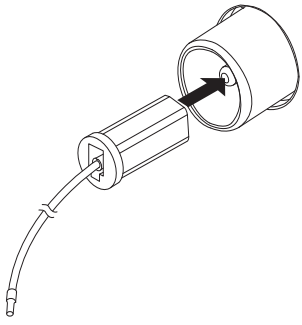
- 1 Hold down the socket flap.
- 2 Insert the stripped part of the wire completely.

- Insert the right speaker wires to "R", left speaker wires to "L".
- Insert the red wires and blue wires to "+", black wires to "-".

- 3 Release the socket flap.

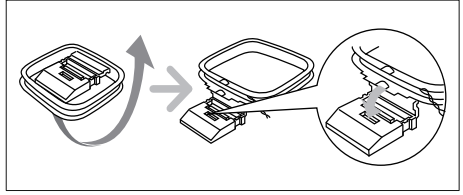
Connect FM antenna

- 1 Connect the supplied FM antenna to the FM jack on the back of the main unit.

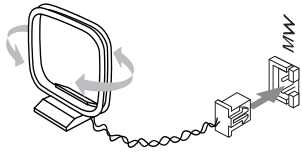


Connect MW antenna

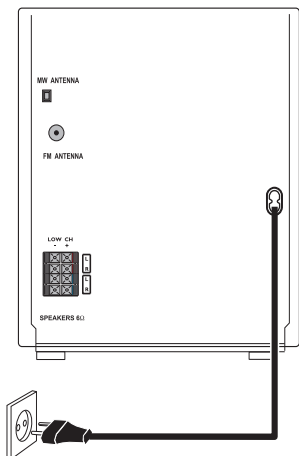
- 1 Prepare the MW loop antenna.



- 2 Connect the MW loop antenna to the MW jack on the back of the main unit.



Connect power



Caution

- Risk of product damage! Ensure that the power supply voltage corresponds to the voltage set on the voltage selector on the back of the unit.
- Before connecting the AC power cord, ensure you have completed all other connections.

Note

- The type plate is located on the back of the main unit.

- 1 Connect the AC power cable to:
 - the main unit.
 - the wall socket.

Prepare the remote control

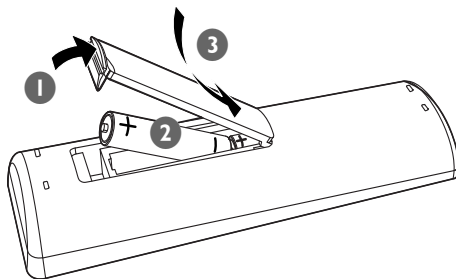
Note

- Risk of explosion! Keep batteries away from heat, sunshine or fire. Never discard batteries in fire.

To replace the remote control battery:

- 1 Open the battery compartment.

- 2 Insert 2 AAA batteries with correct polarity (+/-) as indicated.
- 3 Close the battery compartment.



Note

- If you are not going to use the remote control for a long time, remove the batteries.
- Do not use old and new or different types of batteries in combination.
- Batteries contain chemical substances, so they should be disposed of properly.

Auto install radio stations

When you connect power and no radio stations are stored, the unit automatically begins to store radio stations.

- 1 Connect the unit to the power supply.
 - ↳ [AUTO INSTALL - PRESS PLAY] (auto install - press the PLAY button) is displayed.
- 2 Press ►|| on the main unit to start installation.
 - ↳ [AUTO] (auto) is displayed.
 - ↳ The unit automatically stores radio stations with sufficient signal strength.
 - ↳ When all the available radio stations are stored, the first preset radio station is broadcast automatically.

Set clock

- 1 In the standby mode, press **DISPLAY/CLOCK** to activate the clock setting mode.
 - ↳ The 12 hour or 24 hour format is displayed.
- 2 Press **ALB/PRESET+/-** repeatedly to select 12 hour or 24 hour format.
- 3 Press **DISPLAY/CLOCK** to confirm.
 - ↳ The clock digits are displayed and begin to blink.
- 4 Press **ALB/PRESET+/-** to set the hour.
- 5 Press **◀/▶** to set the minute.
- 6 Press **DISPLAY/CLOCK** to confirm.



Tip

- To view the clock during play, press **DISPLAY/CLOCK**.

Turn on

- 1 Press **POWER**.
 - ↳ The unit switches to the last selected source.

Switch to standby

- 1 Press **POWER** to switch the unit to standby mode.
 - ↳ The backlight on the display panel turns off.
 - ↳ The clock (if set) appears on the display panel.

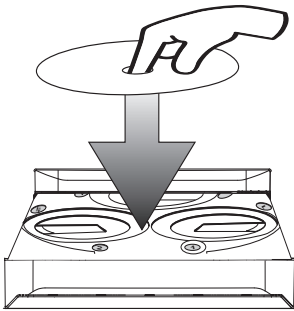
To switch the unit to Eco Power Standby mode:

- 1 Press and hold **POWER** for more than 2 seconds.
 - ↳ The backlight on the display panel turns off.

4 Play

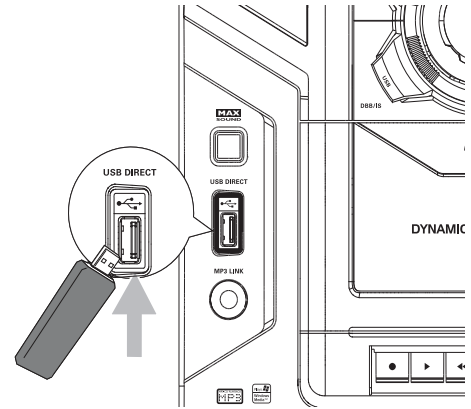
Play disc

- 1 Press **DISC 1/2/3** to select the disc source.
- 2 Press **OPEN/CLOSE** on the main unit to open the disc compartment.
- 3 Load up to two discs on the disc trays, with the printed side facing up
 - To load the third disc, press **DISC CHANGE** on the main unit to rotate to the disc tray.



- 4 Press **OPEN/CLOSE** on the main unit to close the disc compartment.
- 5 Press **▶||** to start play.
 - To select a disc, press **DISC 1/2/3**.
 - To pause/resume play, press **▶||**.
 - To stop play, press **■**.
 - To select another track, press **◀▶** or press a numeric button.
 - To select an album, press **ALB/PRESET+/-**.
 - To search within a track, press and hold **◀▶**, then release to resume normal play.

Play from USB



Note

- Ensure that the USB device contains playable audio contents for supported formats. (see 'USB playability information' on page 20)

- 1 Insert the USB plug of the device into the **↔** socket.
- 2 Press **USB** to select the USB source.
- 3 Press **ALB/PRESET+/-** to select a folder.
- 4 Press **◀▶** to select an audio file.
- 5 Press **▶||** to start play.
 - To pause/resume play, press **▶||**.
 - To stop play, press **■**.
 - To search within an audio file, press and hold **◀▶**, then release to resume normal play.

Play tape

Note

- When you play or record a tape, the sound source cannot be changed.

- 1 Press **TAPE** on the main unit to select the tape source.

- 2 Pull at **OPEN▲** on the front panel to open the tape button cover.
- 3 Press **■▲** to open the tape door.
- 4 Load the tape with the open side downward and the full spool to the left.
- 5 Press **▶** to start play.
 - To pause/resume play, press **■■**.
 - To fast rewind or wind the tape, press **◀◀/▶▶**.
 - To stop play, press **■▲**.





Play from an external device

You can also listen to an external audio device through this unit.

- 1 Press **MP3-LINK** to select the MP3 link source.
- 2 Connect the supplied MP3 link cable to:
 - the **MP3 LINK** jack (3.5mm) on the unit.
 - the headphone jack on an external device.
- 3 Start to play the device (see the device user manual).

5 Play options

Repeat and random play

- 1 Press **MODE** repeatedly to select:
 - : the current track is played repeatedly.
 - : all tracks are played repeatedly.
 - : all tracks are played randomly and repeatedly.
 - : all tracks are played randomly.
- 2 To return to normal play, press **MODE** repeatedly until play mode is no longer displayed.



Tip

- Shuffle play cannot be selected when you play programmed tracks.

Display play information

- 1 During play, press **DISPLAY/CLOCK** repeatedly to select different play information.

Program tracks

You can program a maximum of 40 tracks.

- 1 At CD/USB mode, in the stop position, press **PROG** to activate the program mode.
 - ↳ [PROG] (program) blinks on the display.
- 2 For MP3/WMA tracks, press **ALB/PRESET+/-** to select an album.
- 3 Press **◀/▶** to select a track number, then press **PROG** to confirm.
- 4 Repeat steps 2 to 3 to select and store all tracks to program.
- 5 Press **▶||** to play the programmed tracks.
 - ↳ During play, [PROG] (program) is displayed.
 - To erase the program, in the stop position, press **■**.

6 Adjust volume level and sound effect



Note

- MAX sound and DSC (Digital Sound Control) cannot be activated at the same time.

Adjust volume level

- 1 During play, press **VOL +/-** to increase/decrease the volume level.

Mute sound

- 1 During play, press **MUTE** to mute/unmute sound.

Boost sound power

MAX SOUND gives an instant boost to the sound power .

- 1 Press **MAX** to turn on or off the sound power boost.
↳ If MAX sound is activated, MAX is displayed.

Select a preset sound effect

The DSC (Digital Sound Control) enables you to enjoy special sound effects.

- 1 During play, press **DSC** repeatedly to select:
 - [JAZZ] (jazz)
 - [ROCK] (rock)

- [TECHNO] (techno)
- [OPTIMAL] (optimal)

Enhance bass

The best DBB (Dynamic Bass Enhancement) setting is generated automatically for each DSC selection. You can manually select the DBB setting that best suits your listening environment.

- 1 During play, press **DBB/IS** repeatedly to select:
 - DBB 1
 - DBB 2
 - DBB 3
 - DBB off↳ If DBB is activated, **DBB** is displayed.

Incredible surround

You can enhance audio with a virtual surround sound effect.

- 1 Press and hold **DBB/IS** to turn on or off the incredible surround.
↳ If the incredible surround is activated, [INC SURR] (incredible surround) is displayed.

Customize sound for room acoustics

- 1 During play, press **VAC** repeatedly to select a type of listening environment:
 - [HALL] (hall)
 - [CINEMA] (cinema)
 - [CONCERT] (concert)

7 Listen to radio

Tune to a radio station

- 1 Press **TUN** repeatedly to select FM or MW.
- 2 Press and hold **◀▶** for more than 2 seconds.
 - ↳ [SEARCH] (search) is displayed.
 - ↳ The radio tunes to a station with strong reception automatically.
- 3 Repeat step 2 to tune to more stations.
 - To tune to a weak station, press **◀▶** repeatedly until you find optimal reception.

Program radio stations automatically

You can program a maximum of 40 preset radio stations.

- 1 In the tuner mode, press and hold **PROG** for more than 2 seconds to activate automatic program mode.
 - ↳ [AUTO] (auto) is displayed.
 - ↳ All available stations are programmed in the order of waveband reception strength.
 - ↳ The first programmed radio station is broadcast automatically.

Program radio stations manually

You can program a maximum of 40 preset radio stations.

- 1 Tune to a radio station. (see 'Tune to a radio station' on page 17)

- 2 Press **PROG** to activate program mode.
 - ↳ [PROG] (program) blinks on the display.
- 3 Press **ALB/PRESET+/-** to allocate a number to this radio station, then press **PROG** to confirm.
 - ↳ The preset number and the frequency of the preset station are displayed.
- 4 Repeat the above steps to program other stations.

Tip

- To overwrite a programmed station, store another station in its place.

Select a preset radio station

- 1 In tuner mode, press **ALB/PRESET+/-** to select a preset number.

Tip

- Position the antenna as far as possible from TV, VCR or other radiation source.
- For optimal reception, fully extend and adjust the position of the antenna.

FM stations with RDS

Radio Data System (RDS) is a service that sends additional broadcast information along with FM stations.

If you listen to a FM station with RDS signal, "RDS" is displayed.

Display RDS information

- 1 For a FM station with RDS, press **RDS** repeatedly to display various broadcast information.

8 Record



Note

- To record, use only "Normal" (IEC type I) tapes on which the write-protect notches (tabs) are not broken.
- When you play or record a tape, the sound source cannot be changed.

Auto record from CD to tape

- 1 Select the disc source.
- 2 Load a disc.
- 3 Pull at **OPEN▲** on the front panel to open the tape button cover.
- 4 Press **■▲** to open the tape door.
- 5 Load the tape with the open side downward and the full spool to the left.
- 6 Press **●** to start recording.
 - ↳ Disc play starts automatically from the beginning of the disc.
 - To pause recording, press **■**. To resume recording, press this button again.
 - To stop recording, press **■▲**.

Record a section of a disc to tape

- 1 During disc play, press and hold **◀▶** to search, then release the button.
 - To select a track, press **◀▶**.
- 2 Press **▶■** to pause disc play.
- 3 Load a tape.
- 4 Press **●** to start recording.
 - ↳ Disc play resumes automatically.
 - To pause recording, press **■**. To resume, press this button again.
 - To stop recording, press **■▲**.

Record from radio to tape

- 1 Tune to the desired radio station. (see 'Tune to a radio station' on page 17)
- 2 Pull at **OPEN▲** on the front panel to open the tape button cover.
- 3 Press **■▲** to open the tape door.
- 4 Load a tape.
- 5 Press **●** to start recording.
 - To pause recording, press **■**. To resume, press this button again.
 - To stop recording, press **■▲**.



Tip

- The best recording level is set automatically. Change of volume and sound effect does not affect recording.
- The quality of recorded sound can differ depending on the source and the tape used.



9 Other features

Set the alarm timer

This unit can be used as an alarm clock. The disc, radio or USB is activated to play at a preset time.

- 1 Ensure that you have set the clock correctly. (see 'Set clock' on page 12)
- 2 Press **POWER** to switch to standby mode.
- 3 Press and hold **TIMER** for more than 2 seconds.
 - ↳ A prompt to select the source is displayed.
- 4 Press **DISC 1/2/3**, or **TUN** or **USB** to select a source.
- 5 Press **TIMER** to confirm.
 - ↳ The clock digits are displayed and begin to blink.
- 6 Press **ALB/PRESET+/-** to set the hour.
- 7 Press **◀/▶** to set the minute.
- 8 Press **TIMER** to confirm.
 - ↳ The timer is set and activated.

To deactivate or re-activate an alarm timer

- 1 When the unit is turned on, press **TIMER** repeatedly.
 - ↳ If the timer is activated,  is displayed.
 - ↳ If the timer is deactivated,  disappears.



Note

- In MP3 link mode, the alarm timer cannot be set.



Tip

- If disc/USB source is selected and the audio cannot be played, tuner is activated automatically.

Set the sleep timer

This unit can switch to standby automatically after a set period of time.

- 1 When the unit is turned on, press **SLEEP** repeatedly to select a set period of time (in minutes).
 - ↳ When sleep timer is activated, **zZ** is displayed.

To deactivate sleep timer

- 1 Press **SLEEP** repeatedly until [OFF] (off) is displayed.
 - ↳ When sleep timer is deactivated, **zZ** disappears on the display.

Karaoke

You can connect a microphone (not supplied) and sing along with a music source.

- 1 Turn **MIC LEVEL 1/2** to the minimum level.
- 2 Connect a microphone to the **MIC 1/2** jack of the unit.
- 3 Press **DISC 1/2/3**, or **TUN**, or **USB**, or **MP3-LINK** to select the source, and start play.
- 4 Sing through the microphone.
 - To adjust the volume of the source, press **VOL +/-**.
 - To adjust the volume of the microphone, turn **MIC LEVEL 1/2**.

10 Product information



Note

- Product information is subject to change without prior notice.

Specifications

Amplifier

Total output power	240W RMS
Frequency response	60 - 16kHz
Signal-to-noise ratio	>67dB A (IEC)
Aux input	500mV/1000mV

Disc

Laser type	Semiconductor
Disc diameter	12cm/8cm
Support disc	CD-DA, CD-R, CD-RW, MP3-CD, WMA-CD
Audio DAC	24Bits / 44.1kHz
Total harmonic distortion	<1.5%
Frequency response	60Hz -16kHz (44.1kHz)
S/N ratio	>60dBA

Tuner

Tuning range	FM: 87.5 - 108MHz; MW: 531 - 1602kHz
Tuning grid	50KHz (FM); 9KHz (MW)
Number of presets	40
FM	75ohm wire
MW	loop antenna

Speakers

Speaker Impedance	6ohm
Woofer	2 x 5.25"
Tweeter	2 x 1.75"
Dimensions (W x H x D)	249 x 344 x 250mm
Weight	3.58kg each

General information

AC power	220 - 230V~, 50Hz
Operation power consumption	120W
Standby power consumption	<15W
Eco Standby power consumption	≤1W
USB direct	Version 2.0/1.1
Dimensions Main Unit (W x H x D)	265 x 310 x 403mm
Weight (without speakers)	6.09kg

USB playability information

Compatible USB devices:

- USB flash memory (USB 2.0 or USB 1.1)
- USB flash players (USB 2.0 or USB 1.1)
- memory cards (requires an additional card reader to work with this unit)

Supported formats:

- USB or memory file format FAT12, FAT16, FAT32 (sector size: 512 bytes)
- MP3 bit rate (data rate): 32-320 Kbps and variable bit rate
- WMA v9 or earlier
- Directory nesting up to a maximum of 8 levels
- Number of albums/ folders: maximum 99
- Number of tracks/titles: maximum 999
- ID3 tag v2.0 or later
- File name in Unicode UTF8 (maximum length: 128 bytes)

Unsupported formats:

- Empty albums: an empty album is an album that does not contain MP3/WMA files, and is not be shown in the display.
- Unsupported file formats are skipped. For example, Word documents (.doc) or MP3 files with extension .dlf are ignored and not played.
- AAC, WAV, PCM audio files
- DRM protected WMA files (.wav, .m4a, .m4p, .mp4, .aac)
- WMA files in Lossless format

Supported MP3 disc formats

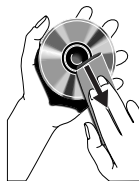
- ISO9660, Joliet
- Maximum title number: 999 (depending on file name length)
- Maximum album number: 99
- Supported sampling frequencies: 32 kHz, 44.1kHz, 48 kHz
- Supported Bit-rates: 32-320 (kbps), variable bit rates
- ID3 tag v2.0 or later
- Directory nesting up to a maximum of 8 levels

Maintenance**Clean the cabinet**

- Use a soft cloth slightly moistened with a mild detergent solution. Do not use a solution containing alcohol, spirits, ammonia or abrasives.

Clean discs

- When a disc becomes dirty, clean it with a cleaning cloth. Wipe the disc from the centre out.



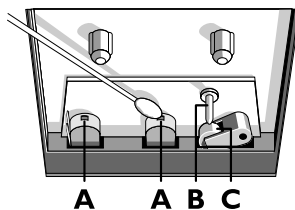
- Do not use solvents such as benzene, thinner, commercially available cleaners, or antistatic spray intended for analogue records.

Clean the disc lens

- After prolonged use, dirt or dust may accumulate at the disc lens. To ensure good play quality, clean the disc lens with Philips CD lens cleaner or any commercially available cleaner. Follow the instructions supplied with cleaner.

Clean the heads and the tape paths

- To ensure good recording and play quality, clean the heads **A**, the capstan(s) **B**, and pressure roller(s) **C** after every 50 hours of tape operation.
- Use a cotton swab slightly moistened with cleaning fluid or alcohol.



- You can also clean the heads by playing a cleaning tape once.

Demagnetise the heads

- Use a demagnetising tape available at your dealer.

11 Troubleshooting

Warning

- Never remove the casing of this apparatus.

To keep the warranty valid, never try to repair the system yourself.

If you encounter problems when using this apparatus, check the following points before requesting service. If the problem remains unsolved, go to the Philips web site (www.philips.com/welcome). When you contact Philips, ensure that the apparatus is nearby and the model number and serial number are available.

No power

- Ensure that the AC power plug of the unit is connected properly.
- Ensure that there is power at the AC outlet.
- To save power, the unit switches to standby automatically 15 minutes after a play reaches the end and no control is operated.

No sound or poor sound

- Adjust the volume.
- Check that the speakers are connected correctly.
- Check if the stripped speaker wires are clamped.

Left and right sound outputs reversed

- Check the speaker connections and location.

No response from the unit

- Disconnect and reconnect the AC power plug, then turn on the unit again.

Remote control does not work

- Before you press any function button, first select the correct source with the remote control instead of the main unit.
- Reduce the distance between the remote control and the unit.

- Insert the batteries with their polarities (+/- signs) aligned as indicated.
- Replace the batteries.
- Aim the remote control directly at the sensor on the front of the main unit.

No disc detected

- Insert a disc.
- Check if the disc is inserted upside down.
- Wait until the moisture condensation at the lens has cleared.
- Replace or clean the disc.
- Use a finalized CD or correct format disc.

Cannot display some files in USB device

- The number of folders or files in the USB device has exceeded a certain limit. This phenomenon is not a malfunction.
- The formats of these files are not supported.

USB device not supported

- The USB device is incompatible with the unit. Try another one.

Poor radio reception

- Increase the distance between the unit and your TV or VCR.
- If the signal is too weak, adjust the antenna or connect an external antenna for better reception.

Clock/timer setting erased

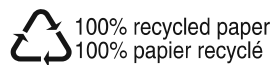
- Power has been interrupted or the power cord has been disconnected.
- Reset the clock/timer.

Timer does not work

- Set the clock correctly.
- Switch on the timer.



© 2009 Koninklijke Philips Electronics N.V.
All rights reserved.



Free Manuals Download Website

<http://myh66.com>

<http://usermanuals.us>

<http://www.somanuals.com>

<http://www.4manuals.cc>

<http://www.manual-lib.com>

<http://www.404manual.com>

<http://www.luxmanual.com>

<http://aubethermostatmanual.com>

Golf course search by state

<http://golfingnear.com>

Email search by domain

<http://emailbydomain.com>

Auto manuals search

<http://auto.somanuals.com>

TV manuals search

<http://tv.somanuals.com>