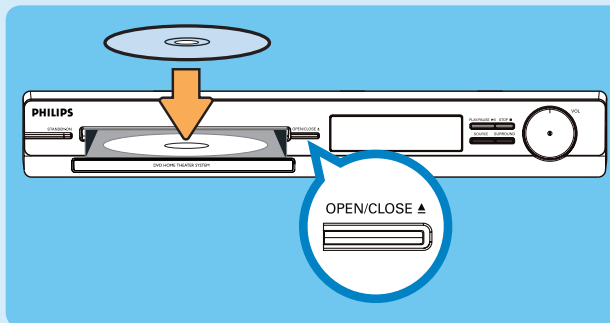


3 Enjoy

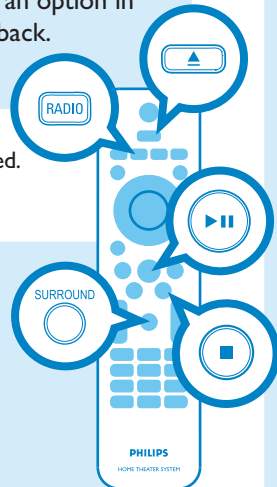
Start disc playback

- 1 Press **▲** to open the disc tray.



- 2 Place a disc with the disc label facing up.
- 3 Press **▲** to close the disc tray.
- 4 Playback starts automatically.
- 5 If the disc menu appears on the TV, use **◀▶▲▼** keys or the numeric keypad to select an option in the menu and press **OK** to start playback.
- 6 Press **■** to stop playback.

Note When you press **▶||** button, playback resumes from where it last stopped. To start playback from the beginning, you have to press **◀**.



Listen to radio

- 1 Press **RADIO**.
The display panel will show "AUTO INSTALL PRESS PLAY".
- 2 Press **▶||**.
All the available radio stations with strong reception signal will be stored automatically.

Note This feature is only available for the first time setup. If you wish to reinstall all the radio stations, press and hold **REPEAT (PROGRAM)** until 'START' appears on the display panel.

- 3 Once complete, use **◀▶** keys or numeric keypad (0-9) to select a preset radio station.
- 4 To delete a preset radio station, press and hold **■** until "FM X DELETED" appears.

Experience surround sound

- 1 Press **SURROUND** to switch between Multi-Channel, Stereo sound or Party sound.
- 2 Press **SOUND MODE + -** to select a preset digital sound effect.

Register your product and get support at
www.philips.com/welcome

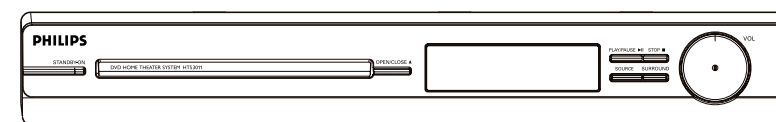
HTS3011



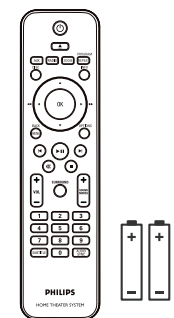
- 1 Connect
- 2 Set up
- 3 Enjoy

Quick Start Guide

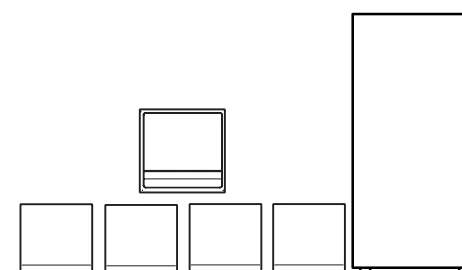
What's in the box?



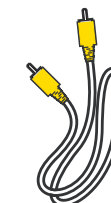
Main Unit



Remote Control and 2 batteries



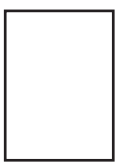
1 center, 2 front, 2 rear speakers and subwoofer



Composite video cable



FM wire antenna



User Manual

Need help?

User Manual

See the user manual that came with your Philips DVD Home Theater System.



2008 © Philips Consumer Electronics
A Division of Philips Electronics North America Corp
P.O. Box 671539 Marietta, GA 30006-0026
All rights reserved.

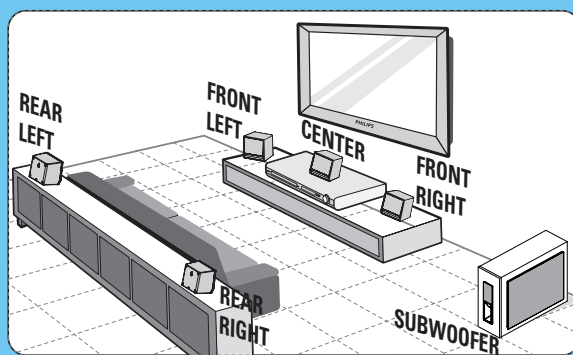
Printed in China

PHILIPS

1 Connect

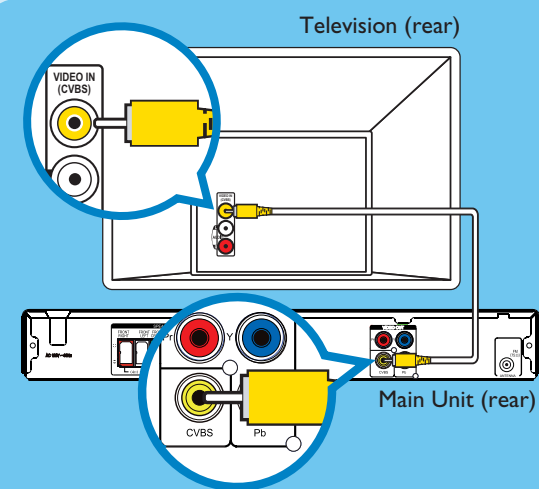
A Placement

Proper speakers system placement is important to ensure optimum sound performance.



- 1 Place the center speaker above or close to the TV.
- 2 Place the subwoofer on the floor, at least one metre away from the TV.
- 3 Place the front speakers at equal distances from the TV.
- 4 Place the rear speakers at the back or beside the listening position.

B Connect the main unit to TV

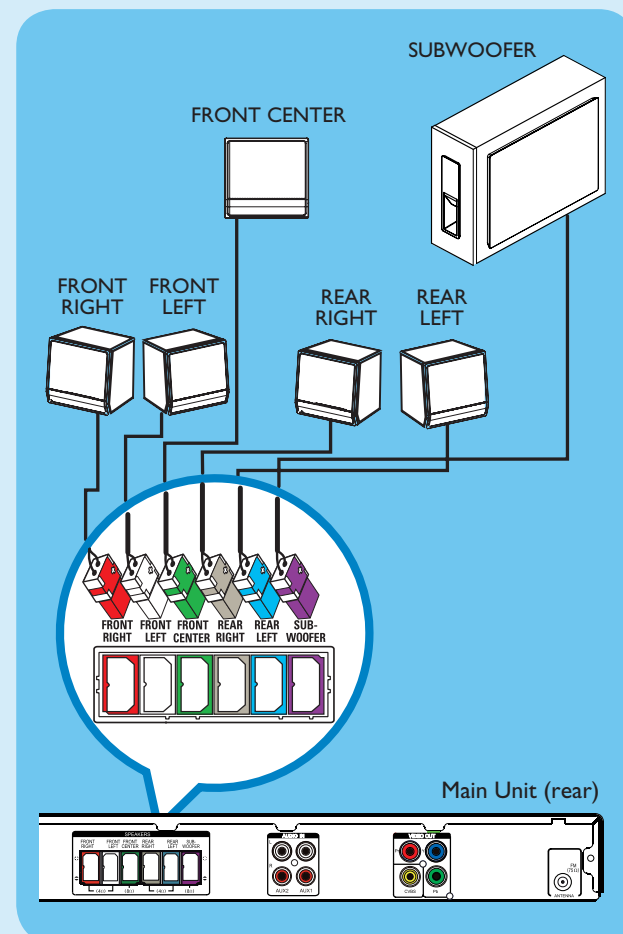


- Use the supplied composite video cable to connect the CVBS jack on the main unit to the VIDEO IN jack on your TV.

Note It is important to connect the main unit directly to your TV.

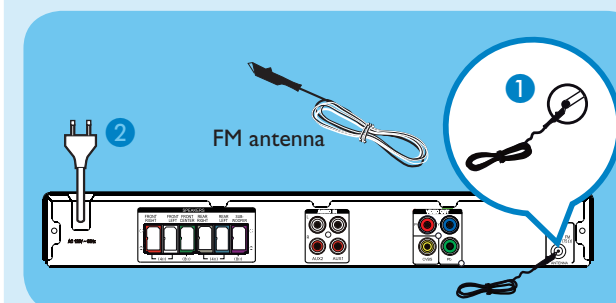
C Connect the speakers and subwoofer

Connect the various colored cables from the speakers and subwoofer to the same colored jacks at the rear of the main unit.



D Connect the radio antenna and power cable

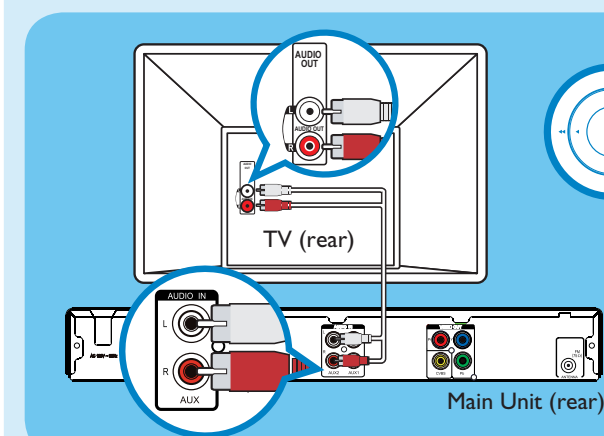
Keep the antennas away from the electronic devices to prevent unwanted interference.



- 1 Connect the FM antenna (supplied) to the inner pin of the FM 75 Ω socket. (For some models, it has been connected in the factory.) Extend the wire for optimum reception.
- 2 Connect the power cable from the main unit to the AC power outlet.

E Connect audio output from TV (optional)

To hear the TV audio through this unit, use a red and white audio cables (not supplied) to connect the AUDIO IN-AUX jacks on the main unit to the AUDIO OUT jacks on your TV.

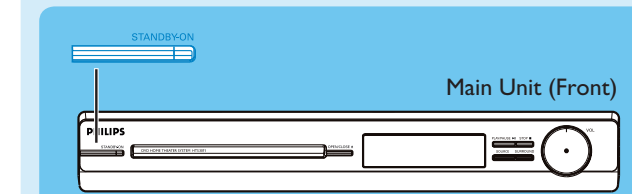


Note When watching the TV programs, you can press **AUX** repeatedly on the remote control until 'AUX 1' or 'AUX 2' is displayed to get the sound output from the speakers.

2 Set up

A Finding the viewing channel

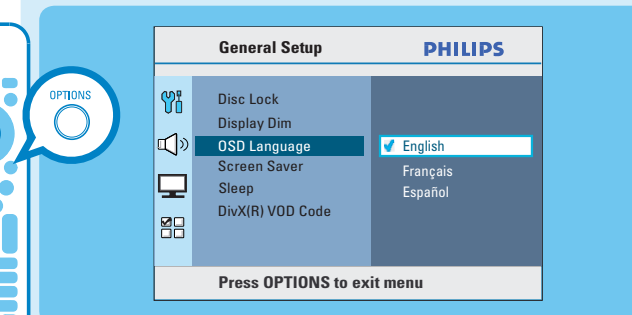
- 1 Press **STANDBY-ON** on the main unit to turn it on.
- 2 Turn on the TV. Use the TV's remote control to select the correct viewing channel.



Note To search for the correct viewing channel, press the Channel Down button on the TV's remote control repeatedly (or AV, SELECT, button) until you see the Video In channel. If you are using a RF modulator, set the TV to channel 3 or 4.

B Select the display language on the screen

- 1 Press **OPTIONS**. The { General Setup } appears.
- 2 Press .



- 3 Use keys to select { OSD Language } and press .
- 4 Use keys to select a language option in the menu and press **OK** to confirm.
- 5 Press **OPTIONS** to exit.

Note The language set here is only for the menus that are shown on the TV while operating this Home Theater system, not for the DVD disc menu.

There are various setup options (Audio Setup, Video Setup, Preferences) available on this Home Theater System. Refer to the user manual for more information.

Free Manuals Download Website

<http://myh66.com>

<http://usermanuals.us>

<http://www.somanuals.com>

<http://www.4manuals.cc>

<http://www.manual-lib.com>

<http://www.404manual.com>

<http://www.luxmanual.com>

<http://aubethermostatmanual.com>

Golf course search by state

<http://golfingnear.com>

Email search by domain

<http://emailbydomain.com>

Auto manuals search

<http://auto.somanuals.com>

TV manuals search

<http://tv.somanuals.com>