

Quick Use Guide

MX5800SA



PHILIPS

12nc: 3139 115 23411

First connect ...

IMPORTANT!

Attach the front speakers to the subwoofer stands and the rear (surround) speakers to the mini speaker stands before making the connections to the DVD system. Refer to owner's manual for detailed set up instructions.

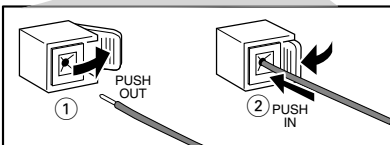
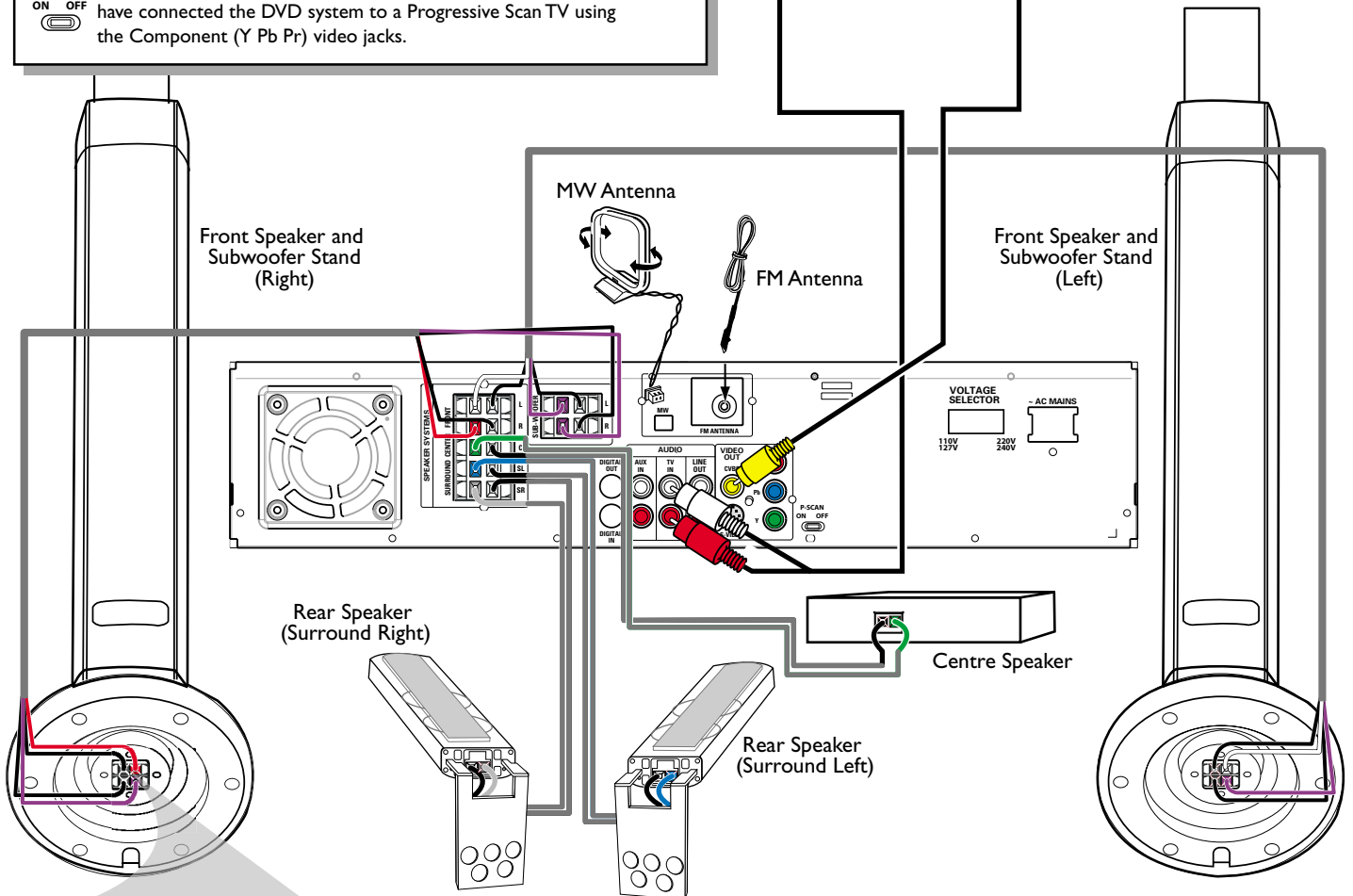
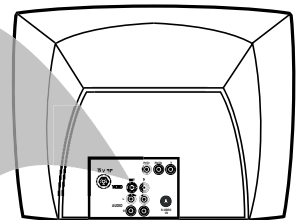
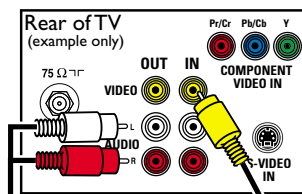
Helpful Hints

You only need to make one video connection to your TV in order to view the DVD playback.

	Use this video cable(s)	If your TV has this video input jack(s)
1		VIDEO IN
2		Component Video
3	not supplied	S-VIDEO IN

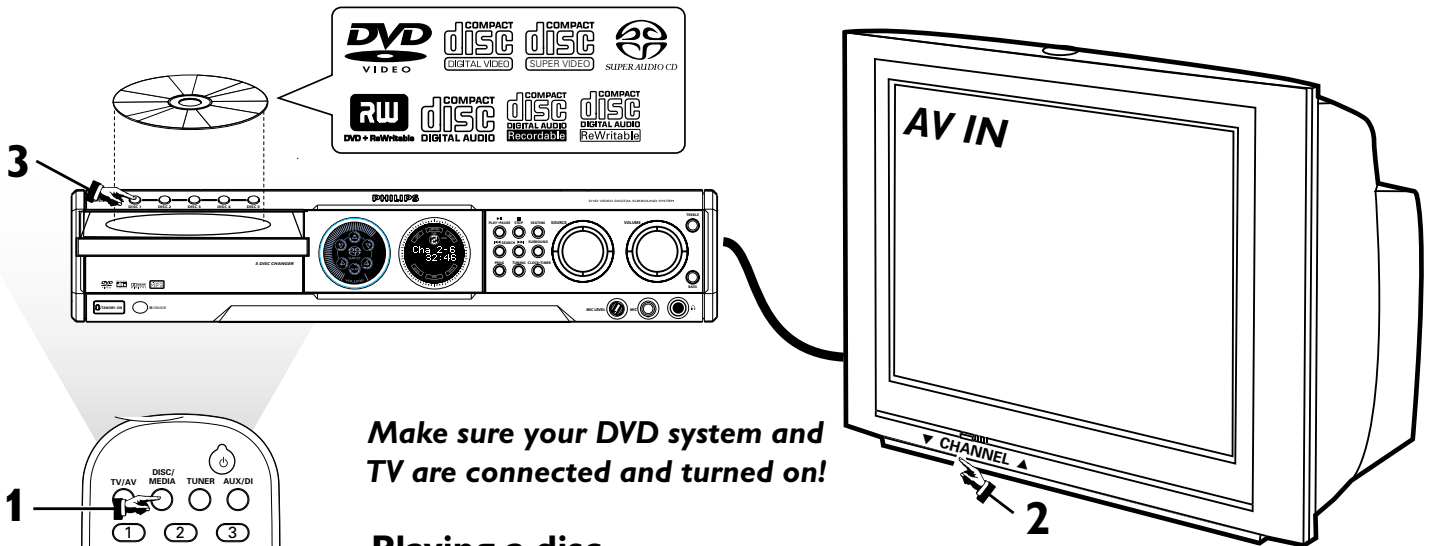
P-SCAN
ON OFF
Do not switch the P-SCAN to 'ON' position, unless you have connected the DVD system to a Progressive Scan TV using the Component (Y Pb Pr) video jacks.

75 Ω If your TV has only a single Antenna In jack, you will need an accessory RF modulator. The RF modulator converts the video from the DVD system so it can play through the TV's Antenna connector. Refer to your owner's manual for proper connection.



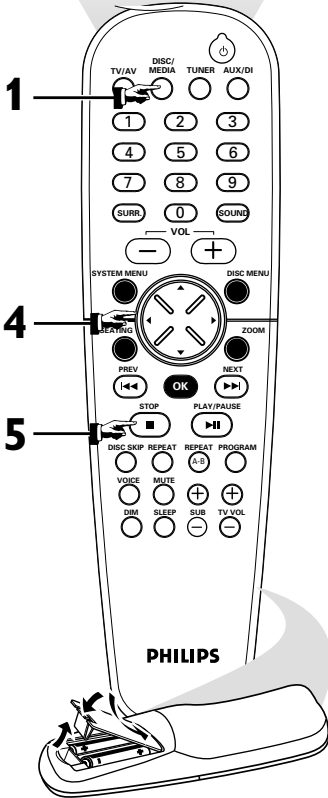
Connecting Speaker Cable

... then play
(see next page)



Make sure your DVD system and TV are connected and turned on!

Playing a disc



1 Press DISC/MEDIA on the remote control.

You can also adjust the SOURCE button on the front panel until "DISC X" appears on the display panel.

2 Turn on the TV and select the correct Video In mode.

You should see the blue Philips DVD background screen on the TV (if no disc in the DVD system).

3 Press OPEN•CLOSE ▲ on the front of the DVD system and load a disc, then press the corresponding OPEN•CLOSE ▲ again to close the disc tray.

Make sure the disc label is facing up. For double-sided discs, load the side you want to play face up.

4 Playback will start automatically.

If a disc menu appears, use ▲▼◀▶ buttons on the remote to make the necessary selection, then press OK to confirm. Or, use the numeric keypad on the remote to select features. Follow the instructions given in the disc menu.

5 To stop playback, press STOP ■.

Region Codes

DVDs must be labeled for ALL regions or Region 4, in order to play on this DVD system.



No picture!!

Check the AV (Audio/Video) mode on your TV.

- * Usually this channel is between the lowest and highest channels and may be called FRONT, AV IN, or VIDEO.
- * Or, you may go to channel 1 on your TV, then press the Channel down button repeatedly until you see the Video In channel.
- * Or, your TV remote control may have a button or switch that chooses different video modes.
- * See your TV manual for more details.



Detailed playback features and additional functions are described in the accompanying owner's manual.

Free Manuals Download Website

<http://myh66.com>

<http://usermanuals.us>

<http://www.somanuals.com>

<http://www.4manuals.cc>

<http://www.manual-lib.com>

<http://www.404manual.com>

<http://www.luxmanual.com>

<http://aubethermostatmanual.com>

Golf course search by state

<http://golfingnear.com>

Email search by domain

<http://emailbydomain.com>

Auto manuals search

<http://auto.somanuals.com>

TV manuals search

<http://tv.somanuals.com>