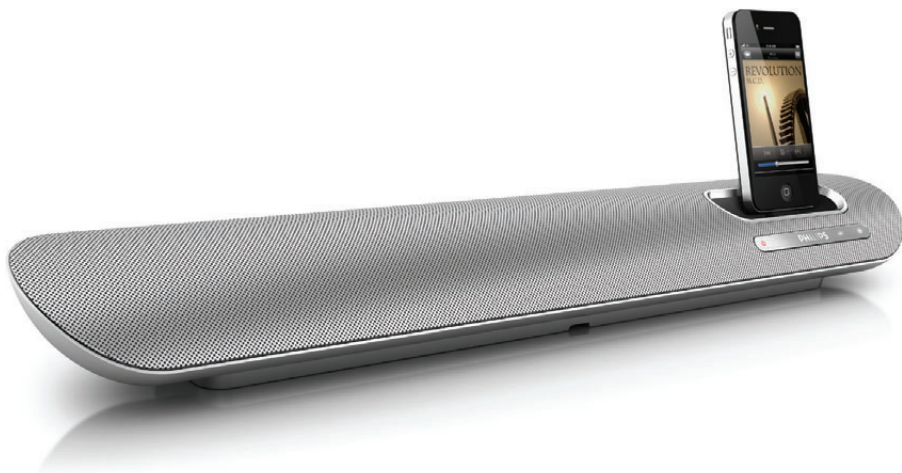


Register your product and get support at

www.philips.com/welcome

DS6100



EN User manual

PHILIPS

Contents

1	Important	3
	Hearing safety	3

2	Your Docking Speaker	4
	Introduction	4
	What's in the box	4
	Overview of the speaker	5

3	Get started	5
	Connect AC power	5
	Turn on	5

4	Play	6
	Play from iPod/iPhone	6
	Play audio from your PC	7
	Play from an external device	7
	Listen through headphone	8
	Adjust volume	8

5	Specifications	8
	Amplifier	8
	General information	8

6	Troubleshooting	9
----------	------------------------	----------

7	Notice	9
----------	---------------	----------

1 Important

- Read these instructions.
- Heed all warnings.
- Follow all instructions.
- Do not use this apparatus near water.
- Do not block any ventilation openings. Install in accordance with the manufacturer's instructions.
- Do not install near any heat sources such as radiators, heat registers, stoves, or other apparatus (including amplifiers) that produce heat.
- Protect the power cord from being walked on or pinched, particularly at plugs, convenience receptacles, and the point where they exit from the apparatus.
- Only use attachments/accessories specified by the manufacturer.
- Unplug this apparatus during lightning storms or when unused for long periods of time.
- Refer all servicing to qualified service personnel. Servicing is required when the apparatus has been damaged in any way, such as power-supply cord or plug is damaged, liquid has been spilled or objects have fallen into the apparatus, the apparatus has been exposed to rain or moisture, does not operate normally, or has been dropped.
- Apparatus shall not be exposed to dripping or splashing.
- Do not place any sources of danger on the apparatus (e.g. liquid filled objects, lighted candles).
- Where the plug of the Direct Plug-in Adaptor is used as the disconnect device, the disconnect device shall remain readily operable.

Hearing safety

Listen at a moderate volume.

- Using headphones at a high volume can impair your hearing. This product can produce sounds in decibel ranges that may cause hearing loss for a normal person, even for exposure less than a minute. The higher decibel ranges are offered for those that may have already experienced some hearing loss.
- Sound can be deceiving. Over time your hearing 'comfort level' adapts to higher volumes of sound. So after prolonged listening, what sounds 'normal' can actually be loud and harmful to your hearing. To guard against this, set your volume to a safe level before your hearing adapts and leave it there.

To establish a safe volume level:

- Set your volume control at a low setting.
- Slowly increase the sound until you can hear it comfortably and clearly, without distortion.

Listen for reasonable periods of time:

- Prolonged exposure to sound, even at normally 'safe' levels, can also cause hearing loss.
- Be sure to use your equipment reasonably and take appropriate breaks.

Be sure to observe the following guidelines when using your headphones.

- Listen at reasonable volumes for reasonable periods of time.
- Be careful not to adjust the volume as your hearing adapts.
- Do not turn up the volume so high that you can't hear what's around you.
- You should use caution or temporarily discontinue use in potentially hazardous situations.



Warning

- Never remove the casing of this apparatus.
- Never lubricate any part of this apparatus.
- Never place this apparatus on other electrical equipment.
- Keep this apparatus away from direct sunlight, naked flames or heat.
- Ensure that you always have easy access to the power cord, plug or adaptor to disconnect the apparatus from the power.

2 Your Docking Speaker

Congratulations on your purchase, and welcome to Philips! To fully benefit from the support that Philips offers, register your product at www.philips.com/welcome.

If you contact Philips, you will be asked for the model and serial number of this product. The model number and serial number are on the bottom of the product. Write the numbers here:

Model No. _____

Serial No. _____

Introduction

With this docking speaker, you can

- enjoy audio from the iPod/iPhone, other external audio devices, and play audio from your computer;
- synchronize the iPod/iPhone with your computer through USB socket.



Note

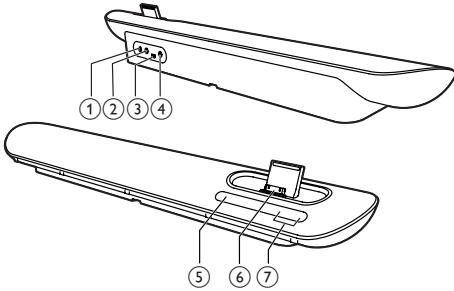
- The speaker supports Dock Studio software.




What's in the box

Check and identify the contents of your package:

- Main unit
- 1 x AC power adaptor
- 1 x USB cable
- 1 x MP3 link cable
- Quick start guide

Overview of the speaker



- ① **DC IN**
 - Connect AC power.
- ②  **Headphone jack.**
- ③ **USB** 
 - Sync with a computer through USB cable.
 - Play music from your computer.
- ④ **MP3-LINK**
 - Connect an external audio device.
- ⑤ 
 - Turn the docking speaker on or switch to standby mode.
- ⑥ **DOCK**
 - Dock for iPod/iPhone.
- ⑦ **VOLUME + / -**
 - Adjust volume.

3 Get started

Always follow the instructions in this chapter in sequence.

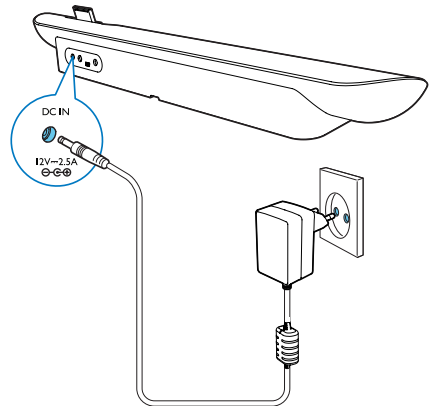
Connect AC power

Caution

- Risk of product damage! Make sure that the power supply voltage matches the voltage printed on the bottom of the unit.
- Risk of electric shock! When you unplug the AC adaptor, always pull the plug from the socket. Never pull the cord.

Connect the AC power adaptor to:


- the **DC IN** power socket at the back of the docking speaker.
- the wall socket.



Turn on

Press  to turn the docking speaker on.

Switch to standby mode

When you press  again, or the system is idle for 15 minutes, the docking speaker switches to standby mode.

4 Play

Play from iPod/iPhone

You can enjoy audio from your iPod/iPhone through this docking speaker:

Compatible iPod/iPhone

The docking speaker supports the following iPod,iPhone models:

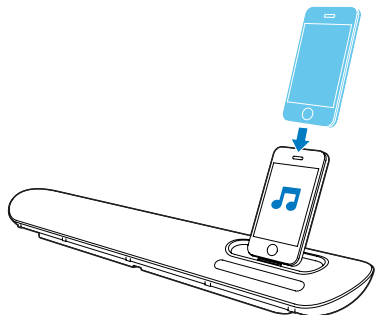
Made for:

- iPod touch (1st, 2nd, 3rd, and 4th generation)
- iPod classic
- iPod nano (1st, 2nd, 3rd, 4th, 5th, and 6th generation)
- iPhone 4S
- iPhone 4
- iPhone 3GS
- iPhone 3G
- iPhone

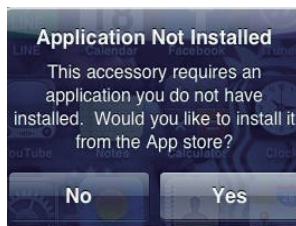
Listen to the iPod/iPhone

Philips **DockStudio** app brings a suite of new features to your docking speaker. To enjoy more features, you are recommended to install the free **DockStudio** app.

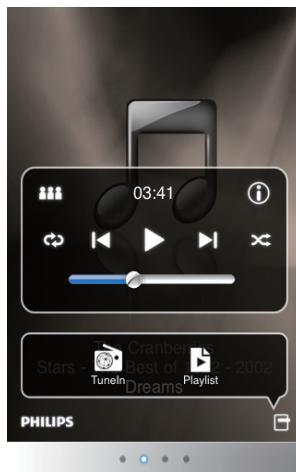
- 1 Press ϕ to turn the docking speaker on.
↳ The LED indicators light up.
- 2 Insert the iPod/iPhone into the dock.



- 3 For first-time use, you will be asked to install **DockStudio** app on your iPod/iPhone.
- 4 Tap **[Yes]** (yes) to accept the installation request.
- 5 Follow the on-screen instructions to complete the installation.



- 6 Launch the app after the installation.
- 7 Play audio on your iPod/iPhone.
↳ Audio comes out through this docking speaker.

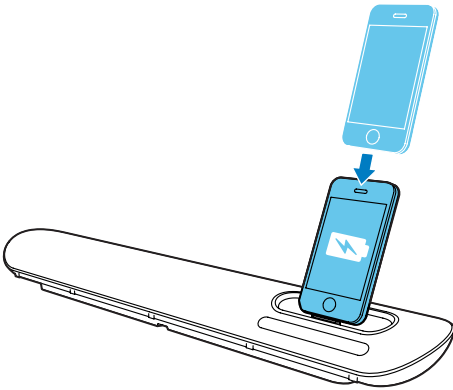


Tip

- With the **DockStudio** app, you can enjoy music, set clock and alarm, adjust sound settings, and update firmware if necessary.

Charge the iPod/iPhone

When the docking speaker is connected to AC power, the docked iPod/iPhone begins to charge.

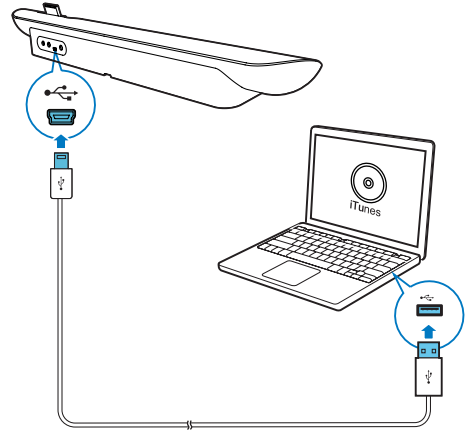


Sync iPod/iPhone with PC

Note

- Make sure that iTunes has been configured properly in your PC.
- Due to different materials and product techniques, some USB cables may not work with this device.

- 1 Insert the iPod/iPhone in the dock.
- 2 Press ϕ to switch to standby mode.
↳ The LED indicators light off.
- 3 Connect your docking speaker and PC with a USB cable.
- 4 Launch iTunes to synchronize your docking speaker with PC.
↳ The docked iPod/iPhone is synchronized with PC successfully through the iTunes.



Play audio from your PC

With this docking speaker, you can enjoy audio from your PC.

- 1 Connect the speaker with your computer with the supplied USB cable.
- 2 Play audio from your PC.

Note

- Make sure that the speaker is correctly connected with your computer through USB cable.
- Make sure that no iPod/iPhone is docked in the speaker.

Play from an external device

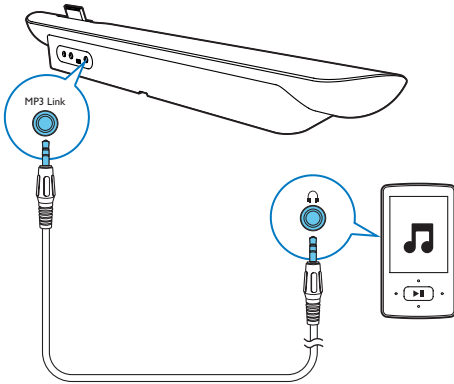
With this docking speaker, you can also enjoy audio from an external device such as an MP3 player.

Note

- Make sure that no iPod/iPhone is docked in the speaker.

- 1 Press ϕ to turn the docking speaker on.
- 2 Connect the MP3 link cable to:
 - the **MP3-LINK** socket at the back of the docking speaker.
 - the headphone socket on an external device.

↳ The docking speaker switches to MP3 link mode automatically.
- 3 Play audio on the device.



Listen through headphone

Plug a headphone into the H socket on the speaker.

Note

- When iPod/iPhone is docked in the speaker, the headphone function is not available.

Adjust volume

- Press +/- on your docking speaker ; or
- Adjust the volume control of your iPod/iPhone or external device.

5 Specifications

Amplifier

Rated Output Power 2 X 10 W RMS

General information

AC power supply	Model: AS300-120-AD250(Philips); Input: 100-240 V ~, 50/60Hz, 1.1A; Output: 12.0V \equiv 2.5 A
Operation Power Consumption	15 W
Standby Power Consumption	<0.5 W
Max.Load for iPod/iPhone	5 V \equiv 1 A
Dimensions	
- Main Unit (W x H x D)	528 x 78 x 93mm
Weight	
- Main Unit	1.1 kg
- With Packing	1.9 kg

6 Troubleshooting

Warning

- Never remove the casing of this apparatus.

To keep the warranty valid, never try to repair the system yourself.

If you encounter problems when using this apparatus, check the following points before requesting service. If the problem remains unsolved, go to the Philips web site (www.philips.com/support). When you contact Philips, ensure that the apparatus is nearby and the model number and serial number are available.

No power

- Make sure that the AC power adaptor of the device is connected properly.
- Make sure that there is power at the AC outlet.

No sound or poor sound

- Adjust the volume of your docking speaker.
- Adjust the volume of your iPod/iPhone or external audio device.

No response from the unit

- Disconnect and reconnect the AC power plug, and then switch on the device again.

Cannot sync with PC

- Switch the docking speaker to standby mode.
- Try another USB cable.
- Install iTunes in PC properly.

7 Notice

Any changes or modifications made to this device that are not expressly approved by Philips Consumer Lifestyle may void the user's authority to operate the equipment.



This product complies with the radio interference requirements of the European Community.



Your product is designed and manufactured with high quality materials and components, which can be recycled and reused.



When this crossed-out wheeled bin symbol is attached to a product it means that the product is covered by the European Directive 2002/96/EC.

Please inform yourself about the local separate collection system for electrical and electronic products.

Please act according to your local rules and do not dispose of your old products with your normal household waste. Correct disposal of your old product helps to prevent potential negative consequences for the environment and human health.

Environmental information

All unnecessary packaging has been omitted. We have tried to make the packaging easy to separate into three materials: cardboard (box), polystyrene foam (buffer) and polyethylene (bags, protective foam sheet.)

Your system consists of materials which can be recycled and reused if disassembled by a

specialized company. Please observe the local regulations regarding the disposal of packaging materials, and old equipment.



“Made for iPod” and “Made for iPhone” mean that an electronic accessory has been designed to connect specifically to iPod or iPhone respectively, and has been certified by the developer to meet Apple performance standards. Apple is not responsible for the operation of this device or its compliance with safety and regulatory standards. Please note that the use of this accessory with iPod or iPhone may affect wireless performance. iPod and iPhone are trademarks of Apple Inc., registered in the U.S. and other countries.

Note

- The type plate is located on the bottom of the apparatus.



Specifications are subject to change without notice
© 2012 Koninklijke Philips Electronics N.V.
All rights reserved.

DS6100_10_UM_V1.0



Free Manuals Download Website

<http://myh66.com>

<http://usermanuals.us>

<http://www.somanuals.com>

<http://www.4manuals.cc>

<http://www.manual-lib.com>

<http://www.404manual.com>

<http://www.luxmanual.com>

<http://aubethermostatmanual.com>

Golf course search by state

<http://golfingnear.com>

Email search by domain

<http://emailbydomain.com>

Auto manuals search

<http://auto.somanuals.com>

TV manuals search

<http://tv.somanuals.com>