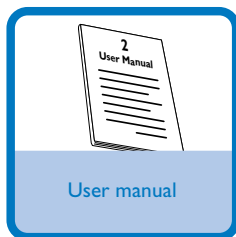
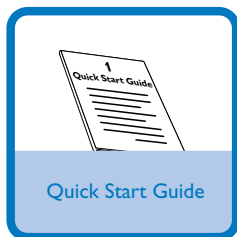


Quick Start Guide



What's in the Box?

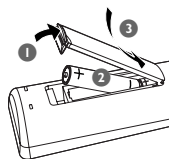
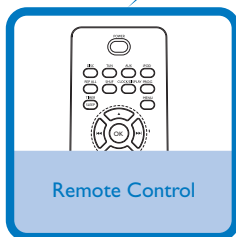
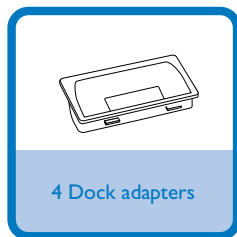
You should find these items upon opening the box.



Step A *Connect*

Step B *Setup*

Step C *Enjoy*

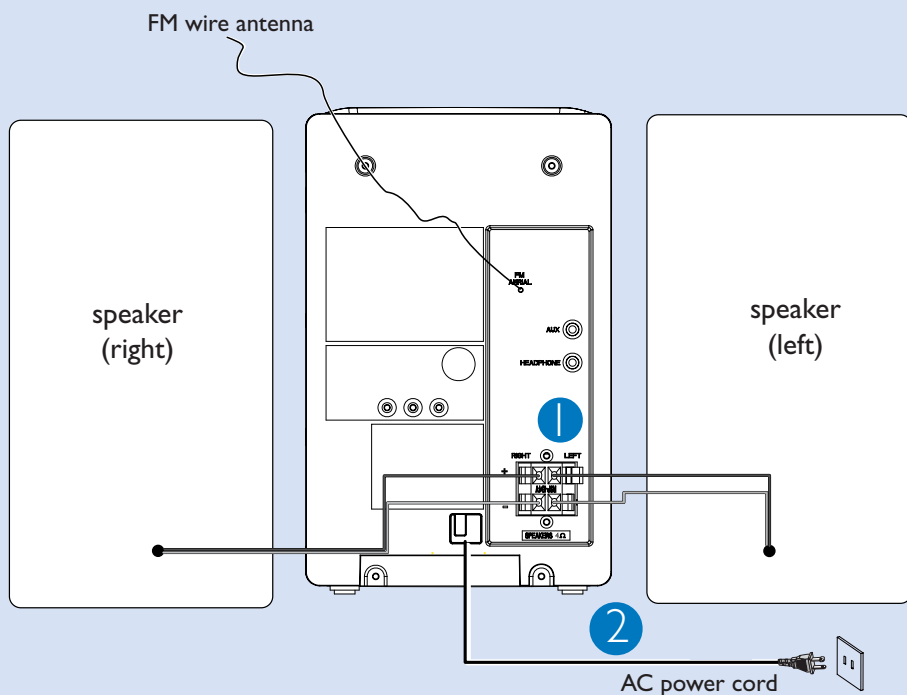


PHILIPS

Step A *Connect*

Connection

- 1 Connect the speaker wires to the **SPEAKERS** terminals.
- 2 Connect the power cord of the system to the AC power outlet.



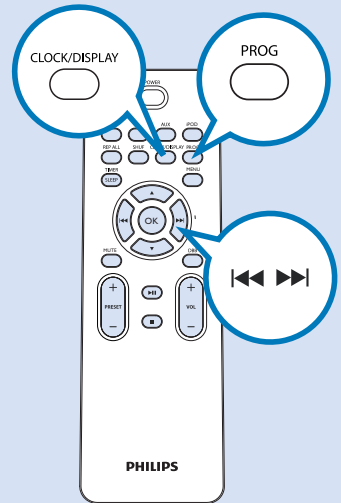
Tip:

It is unnecessary to connect the FM pigtail antenna since it is fixed to the main unit.

Step B *Setup*

Setting the clock

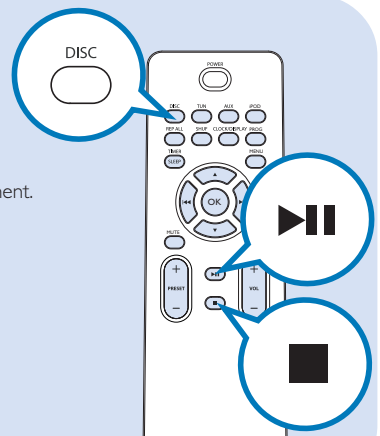
- 1** In standby mode, press and hold **CLOCK/DISPLAY** on the remote control set for 2 seconds.
- 2** Press **PROG** to select 12-hour or 24-hour display.
- 3** Press **CLOCK/DISPLAY** to confirm.
→ The clock digits for the hours flash.
- 4** Press **TUNING** **◀◀ ▶▶** (**◀◀ ▶▶** on the remote control) to set the hours.
- 5** Press **CLOCK/DISPLAY** again.
→ The clock digits for the minutes flash.
- 6** Press **TUNING** **◀◀ ▶▶** (**◀◀ ▶▶** on the remote control) to set the minutes.
- 7** Press **CLOCK/DISPLAY** to confirm the time.



Step C *Enjoy*

Playing a disc

- 1** Select **CD** source.
- 2** Lift the CD door on the top of the system to open the CD compartment.
- 3** Insert a disc with the printed side facing up and press down on **PULL TO OPEN** to close the CD door.
- 4** Press **▶ ||** to start playback.
- 5** Press **■** to stop playback.



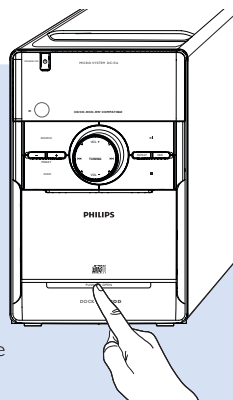
Step C **Enjoy**

Programming and tuning to radio stations

- 1 Select **TUNER** source.
- 2 Press **PROG** on the remote control for more than two seconds to program all available stations in order of waveband.
- 3 Press **PRESET +/-** until the desired preset station is displayed

Playing iPod using the dock

- 1 Press **PUSH TO OPEN** to open the dock.
- 2 Select the dock adaptor of the correct type and size, and snap it into the dock.
- 3 Correctly place your iPod in the dock.
- 4 Press **SOURCE** repeatedly or **DOCK** on the set (**iPOD** on the remote control) to select iPod source.
→ The connected player will play automatically.



Tip:

Detailed playback features and additional functions are described in the accompanied user manual.

Notes for the remote control:

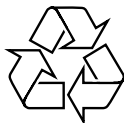
- First, select the source you wish to control by pressing one of the source select keys on the remote control (CD or AUX, for example).
- Then select the desired function (▶||, ◀◀, ▶▶ for example).



© 2010 Koninklijke Philips Electronics N.V.
All rights reserved.

<http://www.philips.com>

DC156_37_QSG_V2.0



Free Manuals Download Website

<http://myh66.com>

<http://usermanuals.us>

<http://www.somanuals.com>

<http://www.4manuals.cc>

<http://www.manual-lib.com>

<http://www.404manual.com>

<http://www.luxmanual.com>

<http://aubethermostatmanual.com>

Golf course search by state

<http://golfingnear.com>

Email search by domain

<http://emailbydomain.com>

Auto manuals search

<http://auto.somanuals.com>

TV manuals search

<http://tv.somanuals.com>