

wearable digital audio

User
Manual

key 003

key 004

key 005

key 006



PHILIPS

Download from [Www.Somanuals.com](http://www.Somanuals.com). All Manuals Search And Download.

Contents

Quick start guide	3
Safety & maintenance	4-5
Controls	6-9
About KEY audio	9
Supplied accessories	9

Installation

Minimum computer system requirements	10
Software installation	11-12

Power supply

Charging the built-in battery via USB (connecting the player to your computer)	13
AAA battery back-up	14

General operation

Switching on/ off	15-16
Playback and pause ► 	15
Adjusting volume +, -	15
Selecting a different track ◀◀ , ▶▶	15
Auto power down	16
Transferring data	17-21
Updating software	21
Upgrading your device	21

Troubleshooting	22-24
Technical data	25

© Koninklijke Philips Electronics N.V. ,2003.

All rights reserved. Reproduction, copying, usage, modifying, hiring, renting, public performance, transmission and / or broadcasting in whole or in part is prohibited without the written consent of Philips.

Quick start guide

Thank you for buying this Philips wearable digital audio player. To get started, follow the steps as shown.

1 Charge

- Charge up your player (5 hours) before using it. Adjust the function switch on the player to **OFF/CHARGE**. Switch on your computer. Detach the USB cover and connect the player to your computer's USB port. (Windows 98 users, please install required drivers first*) While charging, the indicator on your player lights up green.



2 Download

- Adjust the function switch to **PLAYBACK/ DOWNLOAD**. Connect the player to your computer's USB port. To transfer MP3 or WMA files from your computer to the player simply drag and drop in **Windows Explorer**. Alternatively use **MUSICMATCH Jukebox** to transfer your files. To install this program, insert the by-packed CD-ROM into your computer's CD-ROM drive. The installation menu is automatically launched for first-time application users.



3 Play

- Make sure the function switch is in the **PLAYBACK/ DOWNLOAD** position. To listen to your music, connect the remote control & headphones to your player and press **▶||**.



Find more information on the by-packed CD-ROM or visit

www.philips.com/support

***CAUTION! Windows 98 users:**

To avoid problems with playback, do not connect the player to the USB port until after you complete step 2: Download.

Safety & maintenance

Safety & satisfaction

- To enjoy your Philips product, please read and operate the set according to the instructions inside our user manual (on the CD-ROM.)
- **Child safety:** The remote control neckstrap (included with KEY004, KEY006 models only) is not a toy. Special care should be taken if handled by young children. Avoid placing the neckstrap around the neck of a child to prevent strangulation!

Take care when using headphones

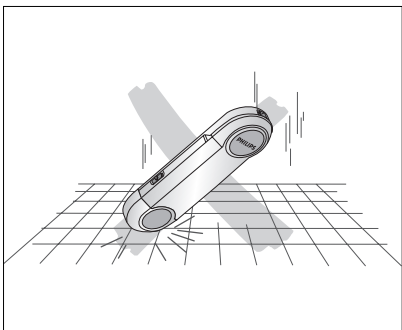
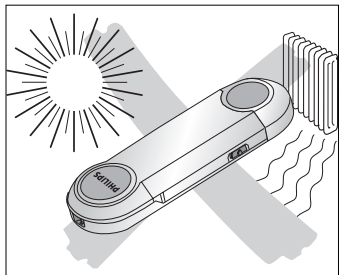
- **Hearing safety:** listen at a moderate volume. Using headphones at high volume can impair your hearing.
- **Traffic safety:** do not use while driving or cycling as you may cause an accident

CAUTION!

To avoid damage or malfunction:

- Do not twist or bend the remote control neckstrap as this is a precision electronic accessory.
- do not expose to **excessive heat** caused by heating equipment or direct sunlight.
- **do not drop** your player or allow objects to fall on it. Strong shocks and vibrations may cause malfunction.
- this product is **not waterproof**: do not allow your player or remote control neck strap to be submersed in water; and avoid exposing the USB socket to water. Water entering the player may cause major damage.
- **do not use any cleaning agents** containing alcohol, ammonia, benzene, or abrasives as these may harm the player and neck strap. To clean, use a soft damp cloth.
- active **mobile phones & strong magnetic fields** in the vicinity may cause interference.
- the supplied software **CD-ROM** is not an audio CD. Playing CD-ROMs on audio equipment may damage your audio equipment!

Safety & maintenance

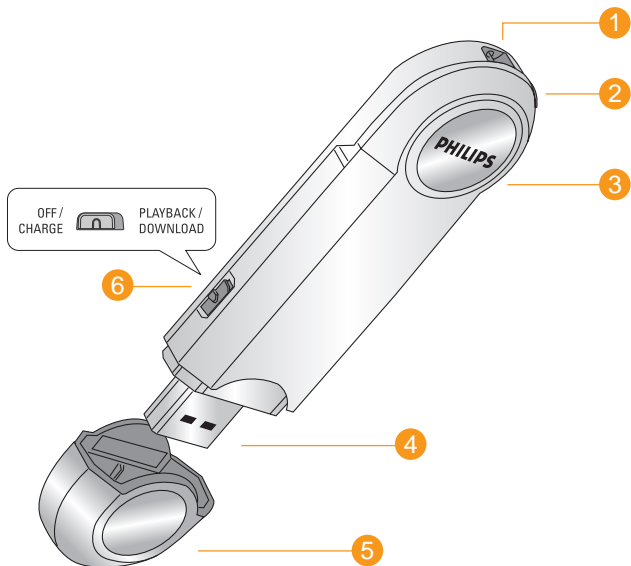


Environmental information

We have reduced the packaging to its minimum and made it easy to separate into mono materials: **PET, paper and aluminum foil.**

Your player consists of material which can be recycled if disassembled by a specialized company. Please observe the local regulations to dispose of packaging, and old equipment.

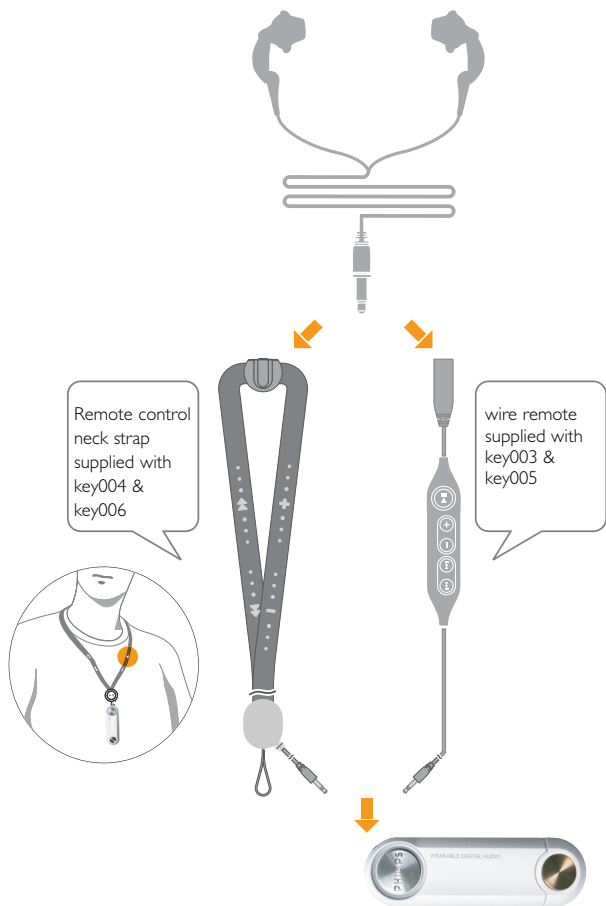
Controls



Safety & satisfaction

To enjoy your Philips product, please read and operate the set according to the instructions inside our user manual.

Download from Www.Somanuals.com. All Manuals Search And Download.



Controls

1 metal pin

you can thread and attach a neck or wrist strap (optional) here.

2 remote control jack

Insert your remote control plug here and then connect your headphones to your remote control

3 indicator

lights up/ blinks according to different functions:

green: during charging the built-in battery

orange: power on/ off and during file transfer.

4 USB port

- Connect the audio player's USB port to your computer's USB port to charge the player or transfer data.
- For back-up power supply, connect the supplied battery box here, loaded with a fresh AAA alkaline battery.

5 USB cover

detach the protective USB cover to reveal the player's USB port.

6 OFF / CHARGE and PLAYBACK / DOWNLOAD

Adjust the switch to select function:

OFF / CHARGE charges the built-in battery when connected to USB port of your computer:

Note: playback is not possible in this position.

PLAYBACK / DOWNLOAD

- ready to download data when connected to USB port of your computer
- ready to start playback of MP3/WMA files

***The model and production numbers can be found next to the USB port
(please remove the USB cover to see)***

Remote control

- ▶|| starts, pauses playback and to switch off the player
- ◀◀ , ▶▶ skips to the previous/ next track
- , + decreases/ increases the volume

Supplied accessories

Make sure these items are in the package. If any item is missing, please contact your dealer:

- 1x CD-ROM (installation software & user manual)
- 1x Quick start guide
- 1 x earphone, **HE570**
- 1 x AAA battery box AY3381 or AY3382 (**AAA** battery not included)
- 1x 5-key wire remote control AY3782 or AY3784 (**KEY003** and **KEY005** models only)
- 1x neck strap remote control AY3783 or AY3780 (**KEY004** and **KEY006** models only)
- 1 x Safety & Warranty booklet

About KEY audio

KEY003/004/005/006 is a solid state, wearable digital audio player:

- plays **MP3, WMA (Windows Media Audio)** and future digital audio formats files e.g. digitized and compressed CD tracks, tape tracks, audio books, newspapers, sound effects, etc., that are encoded into format **MP3** or **WMA**.
- downloads MP3 or WMA without DRM(Digital Rights Management).
- software upgradeable
- can transfer files and other data using **Windows File Manager** or **Windows Explorer**, when the player is connected via USB to your computer
- directly powered through your computer during file transfer to the player.

Minimum computer system requirements

Windows system requirements

- Pentium® MMX 166MHZ processor or better
- USB port with Windows 98 / Me / 2000 / XP
- 96MB RAM
- 50MB hard disk space
- CD-ROM drive
- video display card

For Win98 users only:

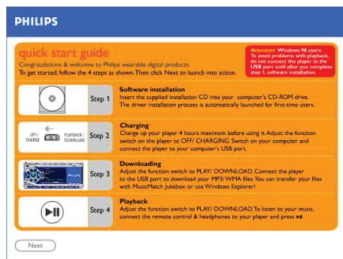
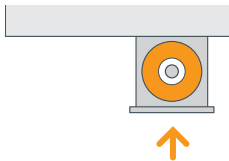
- WHEN CONNECTING THE PLAYER FOR THE VERY FIRST TIME TO DOWNLOAD, MAKE SURE YOU ONLY DO SO AFTER YOU HAVE INSERTED THE SUPPLIED CD-ROM INTO THE CD-ROM DRIVE FOR INSTALLATION OF THE REQUIRED DRIVERS.

CAUTION!

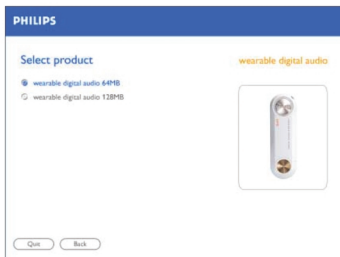
Computers that were upgraded from Windows 95 may not have USB compatibility!

Software installation

- 1 Insert the supplied **CD-ROM** into your CD-ROM drive.
- 2 The **quick start guide** screen appears. Follow the screen instructions.



- 3 Select your product to start installation.



TIP:

- The installation process is automatically launched for first-time application users.
- Please follow all the screen instructions to guide you through and confirm installation. This will install the necessary PC applications, e.g. formatter.

Software installation

- 4 Select and install the **MUSICMATCH Jukebox** or plug-in. Follow all the screen instructions to complete installation.



- 5 For further details and instructions on using MUSICMATCH Jukebox, click **Read MUSICMATCH tutorial**.

Preparing your **KEY** player

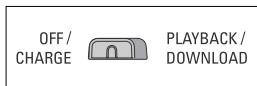
Your player is powered by a built-in rechargeable battery (NiMH), which you can charge direct from your computer.

TIP:

- When you use the player for the very first time, fully charge up the built-in battery first! (See next chapter)
- For speed and as a convenient power back-up, you can also use the supplied AAA battery box.

Charging the built-in battery via USB

- 1 Detach the USB cover.
- 2 Turn on your Computer.
- 3 Check that you have adjusted the function switch to the **OFF/ CHARGE** position.
- 4 Connect the player's USB port to the USB port of your computer.
 - Charging starts immediately. While charging the indicator lights up green.
 - Make sure you leave your PC switched on during charging.
 - When the battery is fully charged (approx. 5 hours), the green indicator goes out.
- 5 Unplug the player and replace the USB cover.



TIP:

- **OFF / CHARGE:** During battery charging, you cannot playback music on the player. The normal functions on the remote control are also disabled.
- When you detach the USB cover, keep it in a safe place.
- To avoid damaging the USB port, **always fit the USB cover back on the player when not connecting to your computer or the battery box.**

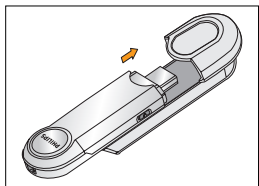
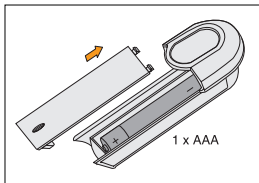
AAA battery

AAA alkaline battery box

When on the move, the AAA alkaline battery box can help increase playtime. It acts as a back-up to using the built-in rechargeable battery.

- 1 Open the battery door: Insert a fresh AAA alkaline battery as shown with the correct polarity.
- 2 Replace the battery door.
- 3 Detach the USB cover on the player.
- 4 Slide the battery box securely to the USB port on the player as shown.

Batteries contain chemical substances, so they should be disposed of properly.



TIP:

- If you already have charged the built-in battery on your player and you attach the AAA battery box, the AAA battery power will be used first.
- When you detach the USB cover, keep it in a safe place.
- To avoid damaging the USB port, **always replace the USB cover when not connecting to your computer or the battery box.**
- Remove the AAA battery if battery drained or if you don't use the player for more than 2 weeks.
- **The battery box is not a charger!** Neither the audio player's built-in rechargeable battery nor AAA batteries can be charged by the battery box.
- Do not attempt to connect the battery box to the USB port on your computer as this may damage connections.

Indication of empty battery

When the built-in / AAA battery power level is almost empty, the player beeps at intervals before it automatically switches off.

Switching on, playback ►||...

To playback your music files on the player, download the files as .MP3 or .WMA files on the root directory of the player. Your KEY player can only playback files stored in this way. (See page 18-21)

- 1 Connect the remote control and headphones to the player as shown on page 7.
- 2 Check that you have adjusted the function switch to the **PLAYBACK/ DOWNLOAD** position.
- 3 Press and hold ►|| for more than 2 seconds to turn on the player.
 - ➔ The indicator lights up orange briefly and playback starts from the last song played when you switched off the player.



TIP:

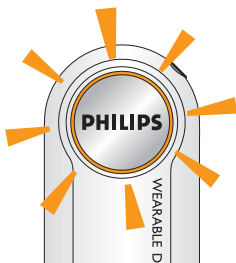
- If the function switch is in the **OFF/ CHARGE** position, you won't be able to playback music!
- If no MP3/ WMA files are stored in the player, the player beeps and the indicator flashes orange before switching off.

Adjusting the volume

- Press repeatedly or press and hold on:
 - + to increase volume
 - to decrease volume

Pause, ►||

- 1 During playback, press ►|| briefly to pause.
- 2 Press ►|| briefly again to resume playback.
 - ➔ The indicator flashes orange slowly during pause.



Selecting a different track, ◀◀ , ▶▶

- During playback, press once or more on:
 - ◀◀ to skip to previous track(s)
 - ▶▶ to skip to track(s) forward

Switching off

Switching off

- During playback, press and hold **▶||** for more than 2 seconds to turn off.
 - ➔ The indicator lights up orange briefly before switching off. The Flash memory in the player stores the last song played and the volume setting.



TIP:

Current volume level and track number will not be memorised if:

- you switch off the player by using the function switch to the **OFF/ CHARGE** position.
- you delete the **SETTINGS.DAT** system file from your Removable Disk folder.

*However, you can easily restore the memory. Turn on the player and use the **▶||** button to switch off your player.*

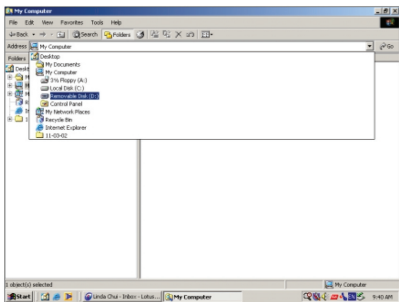
Auto power down

If you activate pause for longer than 30 seconds, your player automatically powers down to help save energy.

CAUTION! Windows 98 users only

WHEN CONNECTING THE PLAYER FOR THE VERY FIRST TIME TO DOWNLOAD, MAKE SURE YOU ONLY DO SO AFTER YOU HAVE INSERTED THE SUPPLIED CDROM INTO THE CDROM DRIVE FOR INSTALLATION OF THE REQUIRED DRIVERS.

When you connect the player to your computer via the USB port, your computer operating system will recognize the player as a removable **USB Mass Storage Device (MSD)**. The player is detected and automatically located as a folder named **Removable Disk/ Device** (e.g. D drive).



Once you have transferred the files to your computer, you can use normal file operations to e.g. copy, delete, rename your files. This means you can listen to your favorite music on the move and also use the player to conveniently carry your work or data files such as **Word** documents, **Powerpoint** presentations, PDFs, etc.

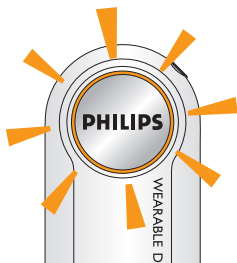
Transferring data

Transferring audio files

To playback your music files on the player, download the files as **.MP3** or **.WMA** files on the **root directory of the player**. Your **KEY** player can only playback files stored in this way.

Any music files downloaded as albums or folders to your player are treated as data files and cannot be played.

- 1 Detach the USB cover.
- 2 Check that you have adjusted the function switch to the **PLAYBACK/ DOWNLOAD** position.
- 3 Connect the player's USB port to the USB port of your computer.
→ The indicator lights up orange.

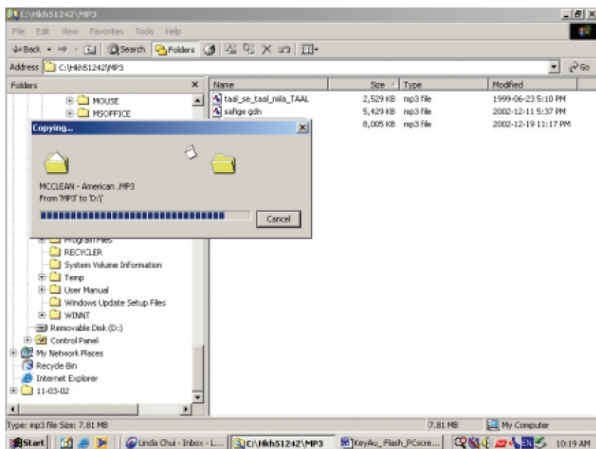


Using **MUSICMATCH Jukebox** to handle your MP3 files:


If you like, check out the **MUSICMATCH Jukebox Tutorial** and software on the supplied CD-ROM to create playlists and manage your MP3 files.

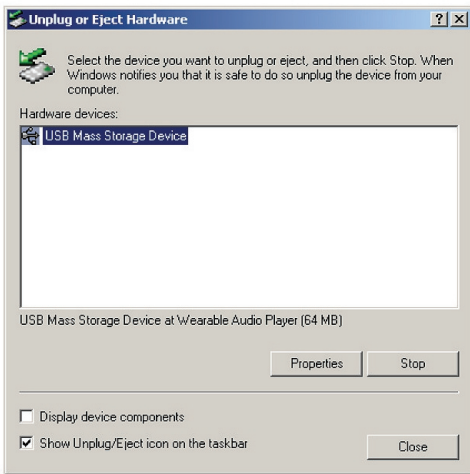
Using Windows File Manager or Windows Explorer to handle your MP3 and other files:

- 1 Launch **Windows File Manager** or **Windows Explorer** to access your MP3/WMA files etc.
 - 2 Select the files you want to transfer (by copying / drag and drop to or from your **Removable Disk** folder.)
- During file transfer, the indicator blinks orange.

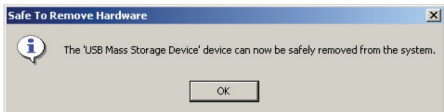


Transferring data

- 3 When you have finished transferring your files, check the orange indicator has stopped flashing and remains lit.
- 4 Click the  **Unplug or Eject Hardware** icon at the bottom of the screen.



- 5 When the **Safe to Remove Hardware** dialogue box appears, click **OK**.



TIP:

- Playback / downloading is not possible if the function switch is in the OFF/ CHARGE position!
- Always follow the screen instructions for safe and proper removal when you unplug your player after file transfer AND make sure the orange indicator has stopped blinking completely. **This helps prevent loss or corruption of data.**
- To free up memory space on your player for new songs, transfer less recent files from your player to your computer.

Updating software*

You can get the latest available version of **MUSICMATCH Jukebox**.

- 1 Click **Options → Update Software → Continue**.
- 2 The update will add files to your computer, then automatically restart MUSICMATCH Jukebox for you.

Note

- requires an active Internet connection.

Upgrading your device

For the latest FAQ, product information, news & software upgrades, visit:

<http://www.philips.com/support>

<http://www.audio.philips.com>

Troubleshooting

WARNING!

Do not dismantle the unit as there is a risk of electric shock! Under no circumstances should you try to repair the set yourself, as this will invalidate the warranty.

If a fault occurs, first check the points listed below before taking the set for repair:

If you are unable to solve a problem by following these hints, consult your dealer or service center.

Sound skips during playback on my KEY player

- Compression level of your WMA or MP3 files may be different from the supported format of your player. Please see page 25 for details.
 - Use a lower compression level to record your file into MP3 format.
- Data corrupted during file transfer:
 - Repeat file transfer and follow all screen instructions properly. Make sure you only unplug the player when the orange indicator stops blinking!

USB does not seem to work

- Connections loose/ incorrect.
 - Check player is securely connected and connections to your computer are correct.
- Wrong Windows version.
 - Your computer must be equipped with Windows 98 or better (see page 10).
- USB driver not installed.
 - For Windows 98 users only, check you have installed the USB driver provided from the installation CD-ROM (See page 10-11).
- Electrostatic discharge.
 - Adjust the function switch to **OFF/ CHARGE** position, and then adjust to the **PLAYBACK/ DOWNLOAD** position to reset the player.

There are no files stored in my player. How come the memory is less than 64MB or 128MB?

- The player uses some of the memory in the device for the software and settings.

Malfunction. No sound, power or reaction to controls. What's wrong?

- Battery power weak/ AAA battery incorrectly inserted.
 - Charge the player via the USB or if you want to use the AAA battery box, correctly insert a fresh battery (see page 13-14).
- Headphones not properly connected.
 - Check both the headphone and remote control are correctly and securely connected to the player. (see page 7)
 - Adjust the volume.
- Electrostatic discharge.
 - Adjust the function switch to **OFF/ CHARGE** position, and then back to the **PLAYBACK/ DOWNLOAD** position to reset the player.
- Corrupted file/ track.
 - Clear all tracks from the device memory. Click from your PC task bar: **Start → Programs → Philips Key Ring Wearable Audio player (xxxMB) → Format**. In the **Key Ring Format** dialogue box, uncheck the **Quick Format** option and then click **Start** to start the format application.
- If there is still no response from the above tips, the Flash memory may have been corrupted.
 - Please check out the following steps to recover your player.

To recover the device, try the following:

- 1 Check that you have adjusted the function switch to the **OFF/ CHARGE** position and the remote control is connected.
- 2 Detach the USB cover and connect the player's USB port to the USB port of your computer.

Troubleshooting

- The indicator lights up green.
- 3 On the remote, press and hold **▶||**. Continue holding. At the same time, adjust the function switch to **PLAYBACK/ DOWNLOAD**.
- The green light goes out.
- 4 Hold **▶||** for another 5 seconds.

On your PC:

- 5 Click on the **START** icon to select the following: **Programs** → **Philips Key Ring Wearable Audio player (xxxMB)** → **Recovery**. This takes you to the **Key Ring Recovery** dialogue window.
- 6 Uncheck **Quick download** (from the **Download** options box).
- 7 Click the **START** command in **Quick download** to start the recovery application.
- 8 Once the recovery process is complete, click on the **Unplug or Eject Hardware** icon on the information bar at the bottom of the screen.
- 9 Follow the screen instructions until you reach the safety message, **Safe to Remove Hardware**.
- 10 Click **OK**, then unplug the player from the USB port.



TIP:

- In Win98, there is no **Unplug or Eject Hardware** icon.
- To avoid loss of data, make sure you only unplug the player when the orange indicator stops blinking!

For the latest FAQ, product information, news & software upgrades, visit:
<http://www.philips.com/support>
<http://www.audio.philips.com>

LED indicator	orange, green
Built-in battery	rechargeable NiMH (via USB)
PC interface	USB 1.1

Internal memory capacity

for KEY003, KEY004 models	64MB
for KEY005, KEY006 models	128MB

* *full memory capacity may not be available as some memory will be reserved for the device.*

Supported format

MP3	8Kbps-320Kbps
WMA	5Kbps-160Kbps

Case material	magnesium player body, plastic USB cover
----------------------	---

Dimensions	86 mm x 27mm x 14.5mm
Weight	35.5g

Battery playtime

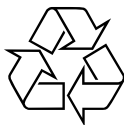
6.5 hours	using built-in rechargeable battery (fully charged)
10 hours	using 1 x AAA alkaline battery

PHILIPS reserves the right to make design and specification changes for product improvement without prior notice.

Meet Philips at the Internet

<http://www.philips.com>

<http://www.audio.philips.com>



KEY003

KEY004

KEY005

KEY006



Free Manuals Download Website

<http://myh66.com>

<http://usermanuals.us>

<http://www.somanuals.com>

<http://www.4manuals.cc>

<http://www.manual-lib.com>

<http://www.404manual.com>

<http://www.luxmanual.com>

<http://aubethermostatmanual.com>

Golf course search by state

<http://golfingnear.com>

Email search by domain

<http://emailbydomain.com>

Auto manuals search

<http://auto.somanuals.com>

TV manuals search

<http://tv.somanuals.com>