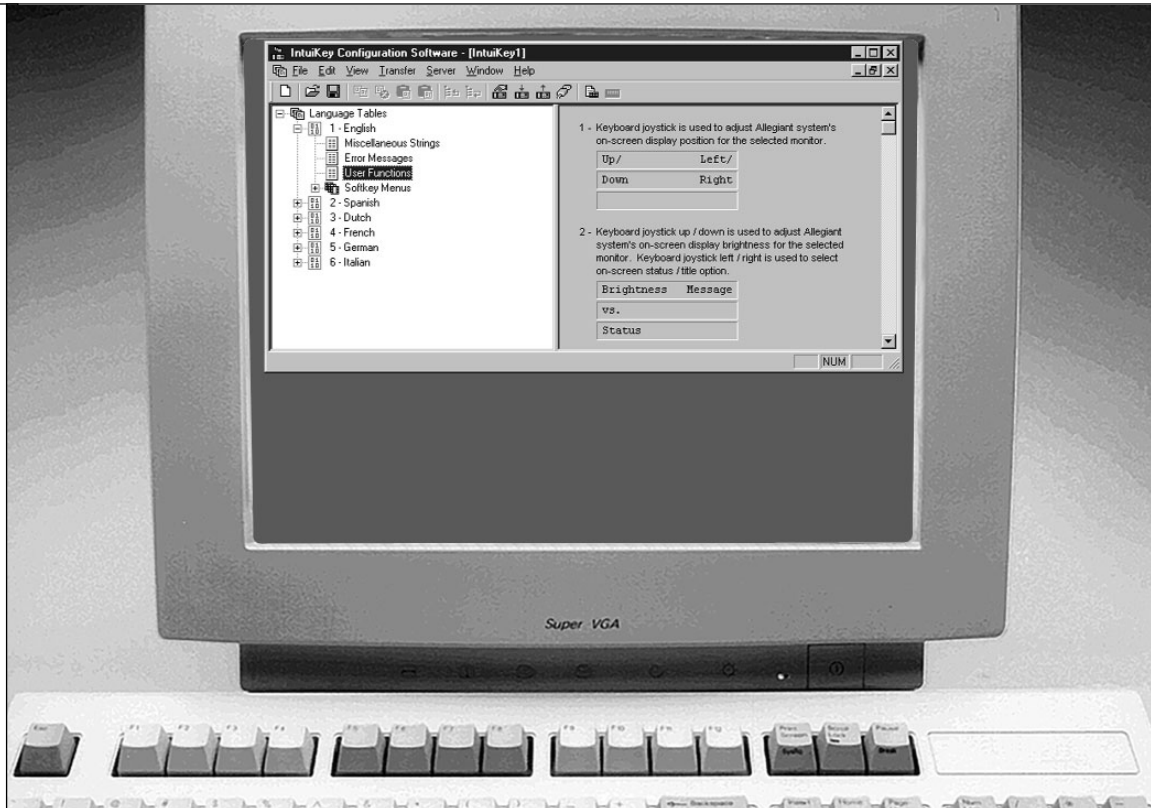


KBD-SFTCFG Software for the IntuiKey Series Digital Keyboard

Installation Instructions

Eng



1	INTRODUCTION	5
2	REQUIREMENTS	5
3	KBD-SFTCFG INPUT LOCALES	5
4	PARTS LIST	5
5	OPTIONAL ACCESSORIES	5
6	INSTALLATION	5
6.1	Software Installation	5
6.2	RS-232 Connection	5
6.3	Keyboard Preparation	6
7	KBD-SFTCFG STARTUP	6
8	KBD-SFTCFG VIEWS	7
8.1	Tree Control (Left Pane)	7
8.2	Forms (Right Pane)	7
8.2.1	Language Table Forms	7
8.2.2	Miscellaneous String Forms	7
8.2.3	Error Message Forms	7
8.2.4	User Function Forms	7
8.2.5	Sofkey Menu Forms	7
9	KBD-SFTCFG MENUS	8
9.1	File Menu	8
9.2	Edit Menu	8
9.3	View Menu	8
9.4	Transfer Menu	8
9.5	Server Menu	9
9.6	Window Menu	10
9.7	Help Menu	10
10	USING THE KBD-SFTCFG	10
10.1	Why the 1 – English Language Table Cannot be Modified	10
10.2	Editing Text	10
10.2.1	Text Alignment	10
10.2.2	Inputting Font Characters by their Numeric Code-Points	10
10.3	Changing a Language Table's Name	10
10.4	Link Buttons	11
10.5	Configuring Softkeys to Execute (CCL) Command Script Macros	11
10.5.1	Assigning Macros	11
10.5.2	Organizing IntuiKey Configuration (.int) Files per Allegiant Server (.alg) Files	11
10.6	Uploading Language Tables	11
APPENDIX A – Keyboard Font Map		12
APPENDIX B – RS-232 Interface Cable Detail (Part Number S1385)		13
APPENDIX C – Allegiant Command Scripts and the KBD-SFTCFG		14

For additional information or to speak to a representative, please contact the Philips Communication, Security & Imaging location nearest you:

The Americas: 1 800 326 3270

Europe & Middle East: 31 40 278 1222

Asia Pacific Region: 65 350 1859

or visit our Web site at www.philipscsi.com.

1 INTRODUCTION

The Philips KBD-SFTCFG (IntuiKey Configuration Software) is used to customize the text displays and Command Script (CCL) macro associations of Philips IntuiKey Series keyboards.

The KBD-SFTCFG creates IntuiKey Configuration (.int) files which contain one or more language tables. In general, a language table is a collection of text that an IntuiKey keyboard displays on its LCDs plus a collection of commands that allow IntuiKey keyboards to execute Command Script (CCL) macros on a Philips Allegiant® matrix switcher/controller system.

Although IntuiKey keyboards can store no more than 6 language tables at once, IntuiKey Configuration (.int) files can hold as many language tables as the PC's resources will allow. When an IntuiKey keyboard has been connected to a PC with an RS-232 interface cable, language tables can be transferred between the KBD-SFTCFG software and the keyboard.

When a new IntuiKey Configuration (.int) file is created, it contains 6 default language tables. The language tables are identical in function, but their text has been translated into different languages including English, Spanish, Dutch, French, German, and Italian. This text can be customized as needed (perhaps translated into yet other languages) using any characters available in the keyboard's font (see **Appendix A**).

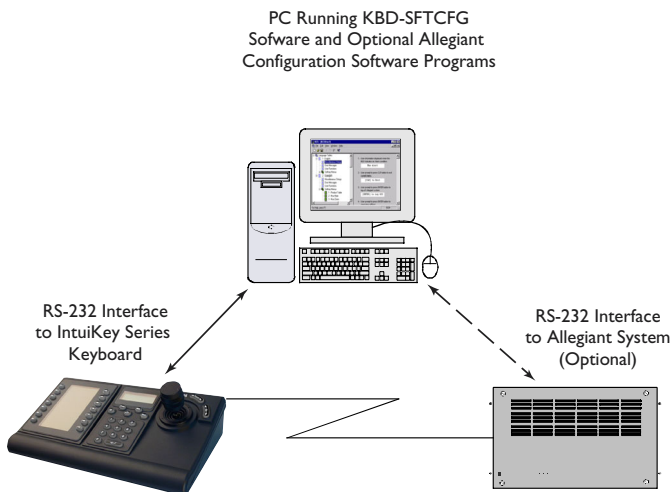


Figure 1 – Typical Application Using the KBD-SFTCFG

2 REQUIREMENTS

The KBD-SFTCFG can only be used on PCs which have the following:

- Pentium® CPUs (or better)
- 3½ inch Floppy Drive
- 1 Serial (COM) Port (2 if the Allegiant interface will also be used)
- 1 Parallel Port (if running Allegiant software)
- Microsoft® Windows NT® 4.0 (Service Pack 6 or greater) or Windows 2000®

3 KBD-SFTCFG INPUT LOCALES

The KBD-SFTCFG supports the following Input Locales in Windows®:

- EN English (United States)
- DE German (Standard)
- FR French (Standard)
- IT Italian (Standard)
- NE Dutch (Standard)
- ES Spanish (Modern Sort)

When Windows® has been set to one of these Input Locales while the KBD-SFTCFG is the active foreground application, the KBD-SFTCFG will receive keyboard input consistent with a keyboard of the respective locale.

In Windows®, Input Locales are configured with the Control Panel's **Regional Settings** applet.

4 PARTS LIST

The KBD-SFTCFG includes the following items:

- A set of 3½ inch Floppy Disks
- An RS-232 Interface Cable (Part Number S1385)
- Installation Instructions (this manual)
- A Software License Agreement

5 OPTIONAL ACCESSORIES

- Allegiant LTC 8059/00 Master Control Software for Windows® Program
- Allegiant LTC 8850/00 Graphical User Interface Program
- IntuiKey Firmware Upgrade Program (available from the **Software Updates and Patches** section of Philips CSI's Web site at <http://www.philipscsi.com>)

6 INSTALLATION

6.1 Software Installation

Insert floppy disk 1 into the PC's 3½ inch floppy drive. From the Windows® **START** menu, select **Run...**, type **A:\Setup**, click the **OK** button, then follow the setup program's prompts.

6.2 RS-232 Connection

All communication between the IntuiKey Series keyboard and the KBD-SFTCFG is performed through an RS-232 interface.

Connect one end of the RS-232 interface cable to the 9-pin **RS-232 Serial Port** located on the far right side of the rear of the IntuiKey keyboard. Connect the other end of the RS-232 interface cable to a COM port on the PC. The software supports the use of COM1 through COM16.

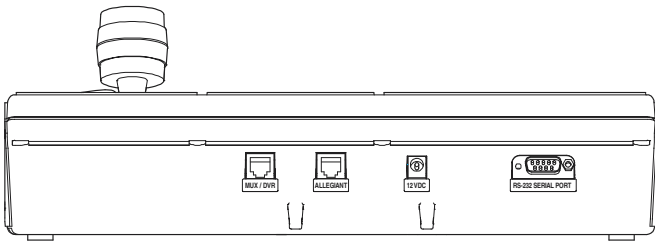


Figure 2 – IntuiKey Keyboard Rear Panel Showing 9-pin RS-232 Interface Connector

If an Allegiant software package (LTC 8059/00 or LTC 8850/00) will be used *simultaneously* with the KBD-SFTCFG, a second COM port must be available on the PC to interface with the Allegiant system's console port. Refer to the manual provided with the Allegiant software for complete information.

6.3 Keyboard Preparation

First verify that the keyboard's firmware version is 1.01 or higher. The firmware version can be read from the IntuiKey keyboard's main menu when it is first powered up. If this is not the case, the keyboard will require an update of its firmware before it can be used with the KBD-SFTCFG. Updating the IntuiKey keyboard's firmware requires the use of the IntuiKey Firmware Update Utility which is available from the **Software Updates** section of Philips CSI's Web site (<http://www.philipscsi.com>).

IMPORTANT: Before the IntuiKey keyboard will respond to external RS-232 communication, it must be placed in **bootloader mode**. This is done by entering the IntuiKey keyboard's **Firmware Upgrade** menu which is accessed from the **Keyboard Control** option of the main **Product List** selection screen. When prompted for the password, press the **1** and **0** numeric keypad buttons simultaneously. The keyboard will then be in bootloader mode.

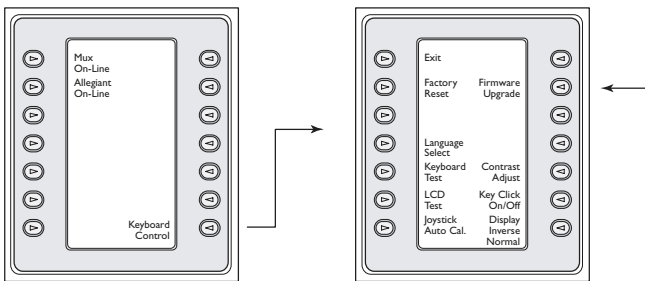


Figure 3 – IntuiKey Keyboard Bootloader Menu Access

In certain circumstances, it may be necessary to enter bootloader mode when the keyboard is in a state where the menu selections are not visible or are otherwise unavailable. In this situation, bootloader mode can be entered directly by simultaneously pressing the **1** and **0** numeric keypad buttons while the power/data cable is attached. The buttons must be released *immediately* when the keyboard begins to power up and initialize. For keyboards with bootloader version 1.01 or higher, skip the next paragraph.

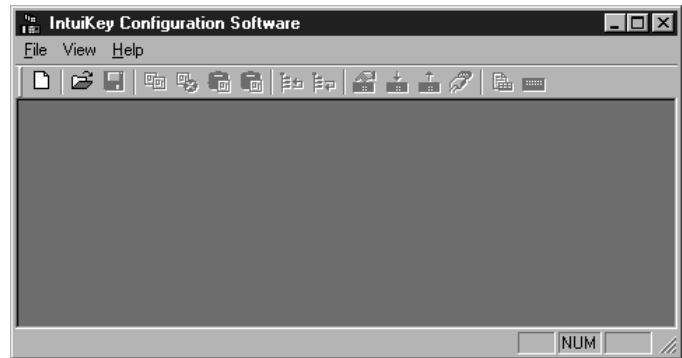
For keyboard bootloader version 1.00 only, you must now press the **Clr** button, power off/on the keyboard again, allow several seconds for it to boot up to a menu, then power it off/on while

pressing the **1** and **0** numeric keypad buttons as the power/data cable is attached. Again, release the buttons *immediately* when the keyboard begins to power up and initialize.

The keyboard will now be able to communicate with the KBD-SFTCFG.

7 KBD-SFTCFG STARTUP

To start the KBD-SFTCFG, go to the Windows® **START** menu and select **Programs | IntuiKey | IntuiKey Configuration Software**. The KBD-SFTCFG always starts in an empty state; i.e., with no IntuiKey Configuration (.int) files opened for editing:



To create a new IntuiKey Configuration (.int) file, select **File | New**. To open an existing IntuiKey Configuration (.int) file, select **File | Open**.

The KBD-SFTCFG can support a maximum of 16 concurrently opened .int files. Each file contains the following:

- One or more language tables
- An optional path to an Allegiant server (.alg) file
- A selection of a PC COM port (for RS-232 communication with the keyboard)

New IntuiKey Configuration (.int) files are created from another type of file called a language table template (LTT). If more than one LTT is available when attempting to create a new .int file, a list of LTT names is presented so that the appropriate one can be selected:



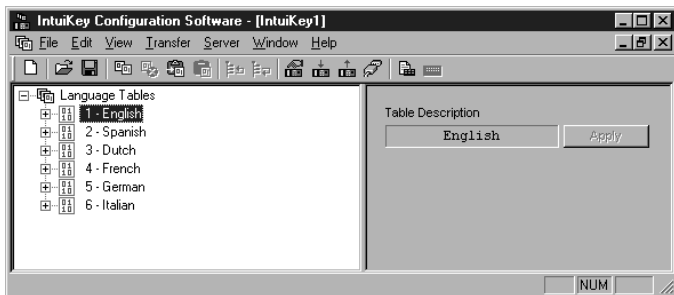
Each LTT published by Philips CSI is given a unique name. The name simply lists what language tables the LTT supports. Names end with a semicolon, followed by a 'Meta Data Schema' number that is used to identify its compatibility with different keyboard firmware versions. It is important to select only a

Language Table that is compatible with the keyboard firmware. Language Table compatibility information can be found in the table in **Appendix D**.

Whenever a customized Language Table file is saved, it is recommended to include the appropriate Meta Data Schema number at the end of its file name. Meta Data Schema numbers of Language Tables already loaded into the KBD-SFTCFG program can be determined by selecting the *Property* option found under the program's *File* menu.

8 KBD-SFTCFG VIEWS

The KBD-SFTCFG's main screen is divided into two views. The left pane contains a tree control that allows a user to index through a set of language tables (and their main subsections). The right pane displays a form that corresponds to the subsection of the language table that's currently selected in the tree control.



8.1 Tree Control (Left Pane)

The tree's root node is labeled **Language Tables**. The root node's immediate subnodes (language table nodes) represent the language tables contained in the IntuiKey Configuration (.int) file (e.g.: 1 – English).

Each language table node has four immediate subnodes which represent its major subdivisions. They are labeled as follows: **Miscellaneous Strings**, **Error Messages**, **User Functions**, and **Softkey Menus**.

The **Softkey Menus** node has several subnodes which represent the language table's softkey menus. Softkey menu nodes have labels that generally describe the collective functionality of their 14 softkeys (e.g. 31 – **Camera Functions**).

If a tree node represents a portion of a language table's contents, then selecting it will cause those contents to be displayed in a form in the KBD-SFTCFG's right pane.

8.2 Forms (Right Pane)

The KBD-SFTCFG's right pane contains forms which display portions of a language table's contents organized into groups of edit boxes and buttons. Each group appears directly beneath one or more lines of descriptive text which explains their significance.

If the language table is not intended to be modified (i.e., read-only), then its forms' buttons and edit boxes will be disabled.

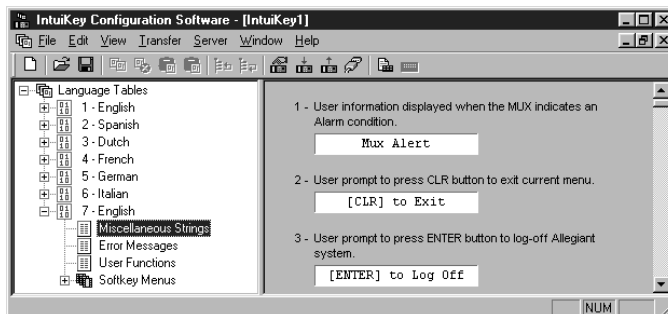
1 - **English** is a read-only table and serves as a reference against which other tables can be compared after they have been modified.

8.2.1 Language Table Forms

Language table forms are displayed when a language table node has been selected in the tree control. This form displays the language table's name (Table Description) which will appear in the keyboard's **Language Select** softkey menu. More information about customizing language table names is included in a later section.

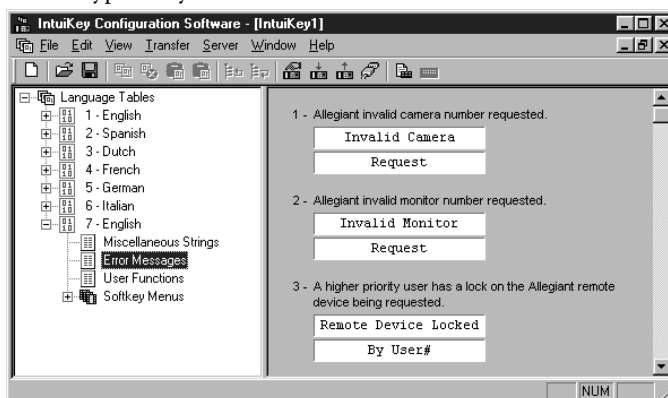
8.2.2 Miscellaneous String Forms

These forms display the language table's miscellaneous strings (**string** is another name for a text message). A keyboard will display these strings on its LCDs at various places and times during operation.



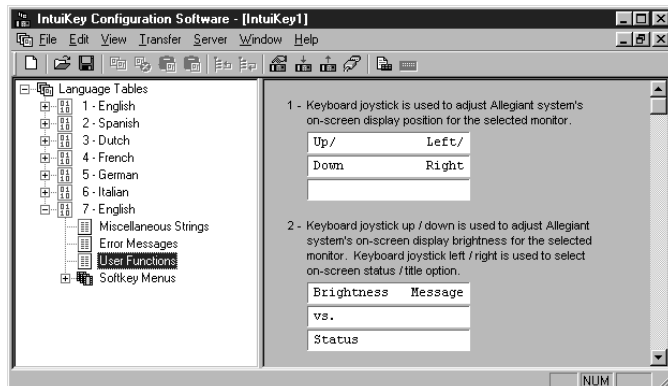
8.2.3 Error Message Forms

These forms display the language table's error messages. A keyboard will display these messages on its LCDs to indicate various types of system and user related errors.



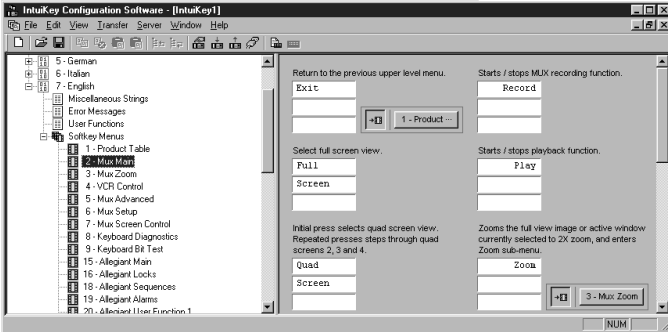
8.2.4 User Function Forms

These forms display the language table's user functions. User functions correspond to various Allegiant system programming features. Refer to the Allegiant manual for complete information.



8.2.5 Softkey Menu Forms

These forms display the language table's softkey menus and appear whenever a subnode of the **Softkey Menus** node has been selected in the tree control.



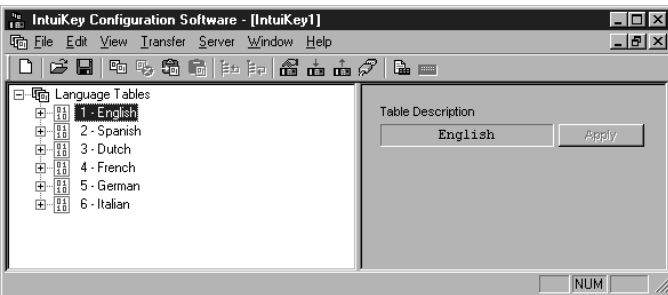
Softkey menu form 1 (1 – Product Table) represents the language table's **Product Table** softkey menu which lists all of the devices a keyboard can control. This menu is displayed by a keyboard when its **Prod** keypad button has been pressed.

Softkey menu forms 2 – 79 represent the bulk of the language table's menus (**NOTE:** several menu forms from 2 – 79 are not populated). These are used to control features of one or more of the products listed in the language table's Product Table.

Softkey menu forms 80 and 83 – 94 are used to configure softkeys so that keyboards can activate (CCL) Command Script macros on Allegiant matrix switcher/controller systems. More information about configuring a language table's softkeys to activate Command Script macros is covered in a later section.

9 KBD-SFTCFG MENUS

Once an IntuiKey Configuration (.int) file has been opened, the KBD-SFTCFG's menu displays its complete set of options. Some menu options also appear as toolbar buttons.



9.1 File Menu

- **New** – Creates a new .int file.
Toolbar button:
- **Open** – Opens an .int file.
Toolbar button:
- **Close** – Closes the currently active .int file.
Toolbar button:
- **Save** – Saves the currently active .int file.
Toolbar button:
- **Save As...** – Prompts for a new file name prior to saving the .int file.
- **<Recent Files>** – Shows a list of previously edited files. If no files have ever been edited, this field will display the text **Recent Files**.
- **Properties** – Displays a dialog which contains information about the currently active .int file.
- **Exit** – Shuts down the KBD-SFTCFG.

9.2 Edit Menu

- **Copy Language Table** (this command is only available when a language table node has been selected in the tree control) – duplicates the language table and inserts the copy at the bottom of the tree control.

Toolbar button:

- **Delete Language Table** (this command is only available when a language table node has been selected in the tree control) – deletes the language table.

NOTE: language tables that are not intended to be modified (i.e., read-only) cannot be deleted.

Toolbar button:

- **Copy Language Table to Clipboard** (this command is only available when a language table node has been selected in the tree control) – copies the language table to the Clipboard. This command is provided so that language tables can be copied between 2 .int files.

Toolbar button:

- **Paste Language Table from Clipboard as New** (only available when a language table has been copied to the Clipboard) – copies the language table from the Clipboard and inserts it at the bottom of the tree control.

Toolbar button:

9.3 View Menu

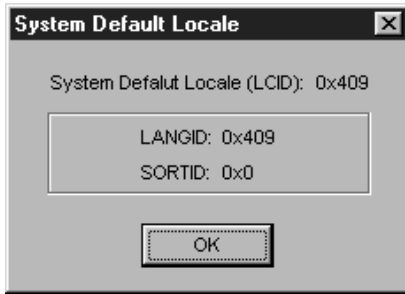
- **Move Language Table Up in Tree** – moves a language table node upwards in the tree control.

Toolbar button:

- **Move Language Table Down in Tree** – moves a language table downwards in the tree control.

Toolbar button:

- **System Default Locale...** – displays Windows®'s default locale information. This information will only be accessed if requested by Tech Support personnel.




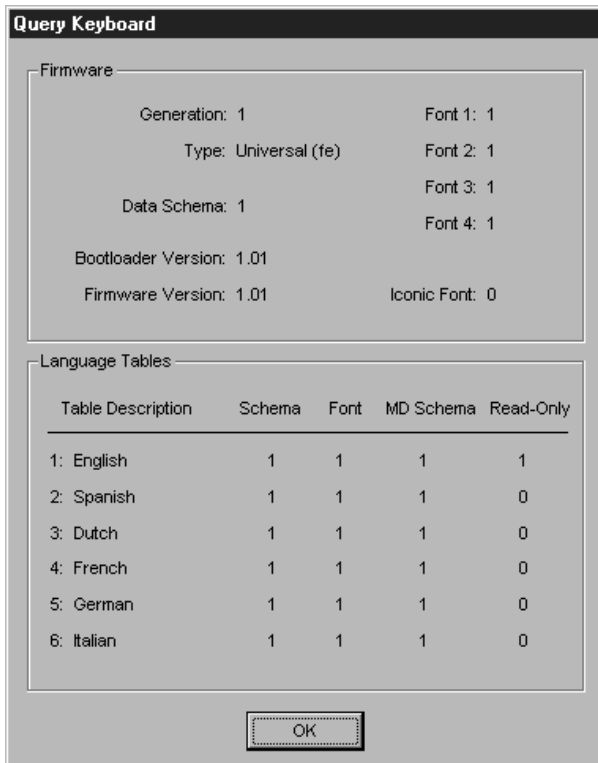
9.4 Transfer Menu

These options are used when communicating with IntuiKey keyboards.


NOTE: the keyboard must be in **bootloader** mode before these options can be performed (see **Keyboard Preparation** section).

- **Query Keyboard...** (this command requires that the keyboard be in bootloader mode – see **Keyboard Preparation** section) – queries the keyboard for its current configuration data. Most of this information will only be needed when requested by Tech Support personnel.

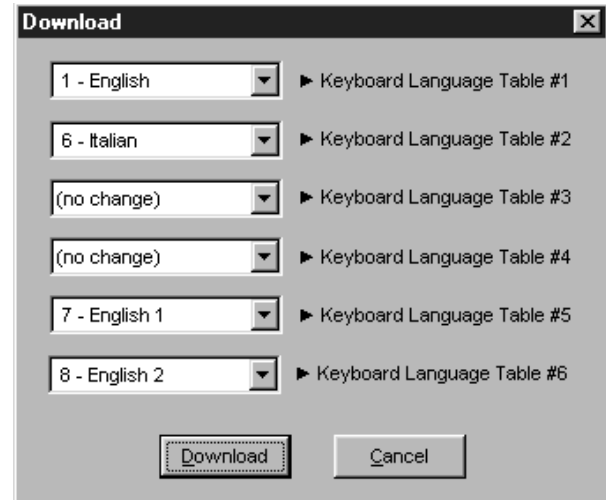
Toolbar button: 




- **Download...** (this command requires that the keyboard be in **bootloader** mode – see **Keyboard Preparation** section) – invokes the **Download** dialog which allows language tables to be transferred from the currently active IntuiKey Configuration (.int) file to the keyboard.

Toolbar button: 

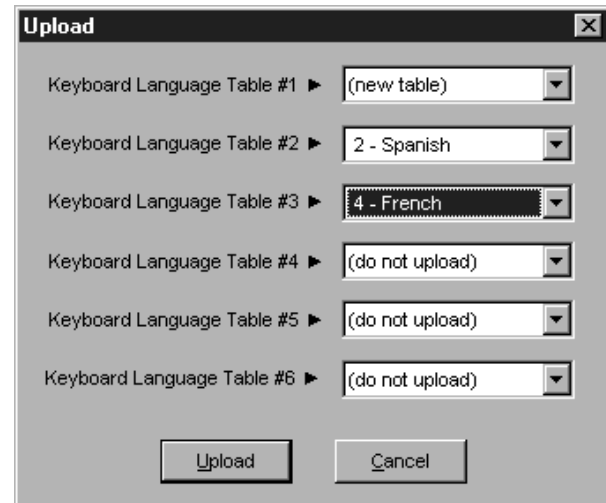
The language tables will be transferred when the **Download** button is clicked. During the transfer, another dialog will display the progress of the operation.




- **Upload...** (this command requires that the keyboard be in **bootloader** mode – see **Keyboard Preparation** section) – invokes the **Upload** dialog which allows language tables to be transferred from the keyboard to new or existing language tables in the currently active IntuiKey Configuration (.int) file.

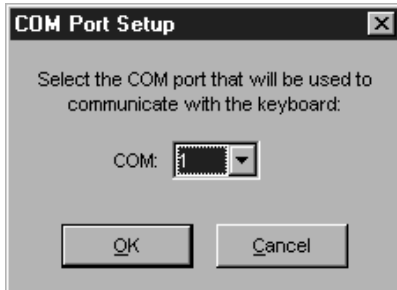
Toolbar button: 

The language tables will be transferred when the **Upload** button is clicked. During the transfer, another dialog will display the progress of the operation.




- **Configure COM Port...** – invokes a dialog for selecting a PC COM port that will be used to communicate with an IntuiKey keyboard. Selections are limited to COM1 through COM16.

Toolbar button: 




9.5 Server Menu

- **Set Allegiant Server Document Association...** (either the Allegiant LTC 8059/00 Master Control Software for Windows® or the LTC 8850/00 Allegiant GUI software must be installed on the PC for this option to be enabled) – opens a dialog which allows an Allegiant server (.alg) pathname to be stored in conjunction with the currently active IntuiKey Configuration (.int) file.

Toolbar button: 



- **Launch Allegiant Server** (either the Allegiant LTC 8059/00 Master Control Software for Windows® or the LTC 8850/00 Allegiant GUI software must be installed on the PC for this option to be enabled) – launches the Allegiant server (.alg) file specified in the **Server | Set Allegiant Server Document Association...** option.

Toolbar button: 

If the .alg file is available, the Philips GUI Allegiant Server dialog will appear. If intending to make changes to the .alg file's Command Script macros, a user must log in with an **installer** level profile. The default installer profile has the user name **Installer** and password **1**. Refer to the Allegiant server software manual for additional information.

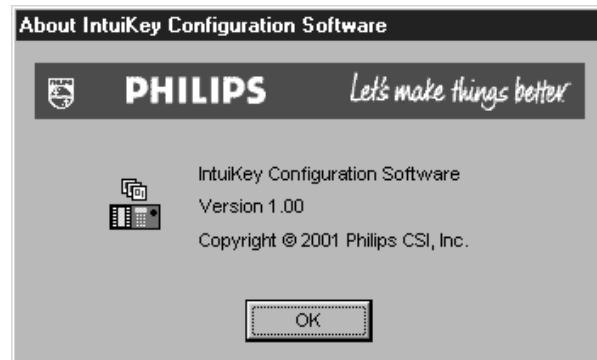


9.6 Window Menu

- **Cascade** – arranges multiple .int files in an overlapped fashion.
- **Tile** – arranges multiple .int files in a nonoverlapping fashion. Some overlap may occur if the main window is too small for a completely nonoverlapped display.
- **Arrange Icons** – arranges minimized (iconified) .int files in a nonoverlapping fashion.

9.7 Help Menu

- **About...** – displays version/copyright information for the KBD-SFTCFG.



10 USING THE KBD-SFTCFG

In general, the KBD-SFTCFG (IntuiKey Configuration Software) allows users to achieve the following:

- Customize the text of softkey menu buttons and diagnostic messages. This can range from making a few minor changes to translating an entire language table (over 750 items) into another language.
- Configure softkeys so that keyboards can activate (CCL) Command Script macros on Allegiant matrix switcher/controller systems.

The subsections that follow explain how these and related tasks can be performed.

10.1 Why the 1 – English Language Table Cannot be Modified

The language table 1 – English serves as a reference point against which all other language tables are compared. It ensures that no matter how dramatically other language tables are customized, a default configuration will always be available on the keyboard.

1 – English is the only language table that can be downloaded to a keyboard's first language table slot. It is also the only language table that cannot be overwritten during an upload operation.

Users who wish to work with the 1 – English language table's data must do so by creating a copy of it and then modifying the copy.

10.2 Editing Text

Any language table text that can be customized will appear in an edit box in one of the language table's form views. Only characters supported by the keyboard's font can be typed into a form's edit box.

The following should be considered when editing text:

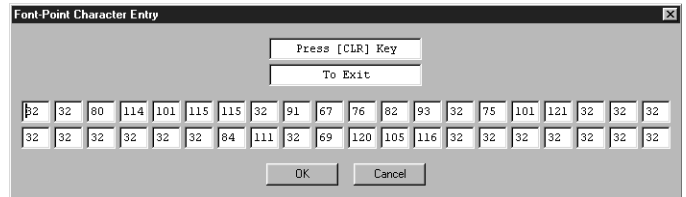
10.2.1 Text Alignment

The alignment of text is significant, because it determines how that text will be displayed on a keyboard's LCDs. When text is customized, it's recommended that the original alignment be preserved to ensure consistency with other text fields being displayed.

10.2.2 Inputting Font Characters by their Numeric Codepoints

Because generating some of the keyboard font's characters may be difficult with a standard PC keyboard, the KBD-SFTCFG allows text to be edited by inputting the characters' numbers (known as codepoints or font-points) instead (see Appendix A for a listing of codepoints). This is done using the **Font-Point Character Entry** dialog box.

When text is being modified in an edit box, the **Font-Point** dialog can be opened by holding down the **Shift** key and right-clicking the edit box or right-clicking the edit box and selecting **Codepoints...** from its context menu. If the edit box is a member of a group of edit boxes, the text from all of the edit boxes will appear in the **Font-Point** dialog.



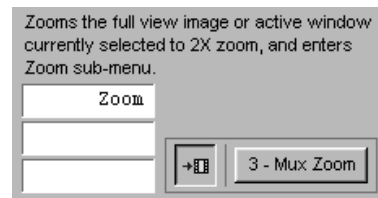
10.3 Changing a Language Table's Name

A language table's name is customized by selecting a language table node in the tree control and modifying the language table form's **Table Description** text. The tree control will display the new name when either the **Apply** button is clicked or a new tree node is selected.

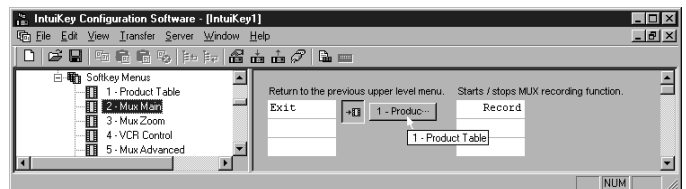
Language table names are displayed in the keyboard's **Language Select** softkey menu. It is recommended that language tables be given unique names to avoid confusion when selections are made from the **Language Select** menu.

10.4 Link Buttons

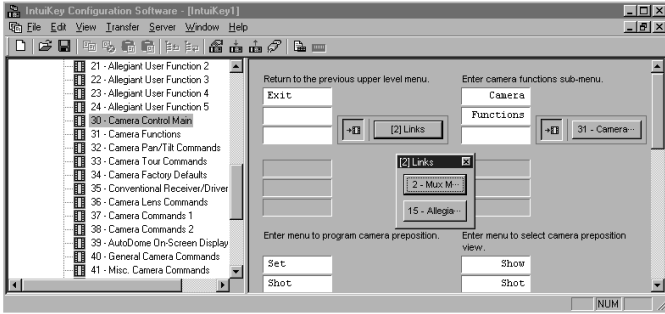
Pressing certain softkeys will cause the keyboard to display (**link to**) another softkey menu. In KBD-SFTCFG menu forms, all softkeys that do this will have a link button next to them. The link button's label will contain the name of the menu to which it links. Clicking a link button causes the tree control to automatically select the target menu (and thus display the target menu's form). Link buttons provide a means to traverse a language table's softkey menus just as they would be traversed when using a keyboard (see Appendix A of the **IntuiKey Keyboard Manual** for a complete graph of the keyboard's menu structure).



Most link buttons' labels are abbreviated because the button is too narrow to display the entire name of the menu to which they link. However, if the mouse pointer hovers over such a link button, a small **tool-tip** window with the entire name will appear nearby.



Sometimes a link button will link to more than one softkey menu. In this case, its button text is formatted as [#] – Links where # represents the total number of menus to which it links. Clicking such a link button invokes a dialog which contains one link button per every possible target menu. The button's **tool-tip** will also display the complete list of target softkey menus.



10.5 Configuring Softkeys to Execute (CCL) Command Script Macros

The KBD-SFTCFG allows users to configure softkeys on menus 80 and 83 – 94 to activate (CCL) Command Scripts on Allegiant matrix switcher/controller systems.

These menus are organized so that 83 – 94 must be accessed through 80. The softkeys on 80 can be configured as either a Command Script or a link to a predetermined menu (83 – 94).

10.5.1 Assigning Macros

Any softkey on menus 80 and 83 – 94 can be assigned to execute a Command Script macro if it has a macro button. Clicking the macro button so that it's in its **down** state will allow the user to enter a 6-digit (**normal**) macro in the accompanying edit box.



The softkey can also be configured as a 2-digit **offset macro** by clicking the small keypad button so that its in its **down** state. When offset macros are executed on the keyboard, the user is expected to enter an additional 4-digit number to **complete** the macro.



See **Appendix C** for more information on Command Script macros.

Refer to the **Allegiant PC Software Manual** and the **Allegiant Command Console Language (CCL) Manual** for more information on writing Command Script macros.

10.5.2 Organizing IntuiKey Configuration (.int) Files per Allegiant Server (.alg) Files

If the optional Allegiant software is installed on the PC, each IntuiKey Configuration (.int) file (which may contain several language tables) can be associated with a single Allegiant Server (.alg) filename. This is done so the user who's configuring softkeys to execute Command Script macros can quickly refer back to the Allegiant Server (.alg) file that contains those Command Scripts.

Since only one Allegiant Server (.alg) filename can be stored in an IntuiKey Configuration (.int) file, it's recommended that Command Script macro assignments to softkeys across all language tables in the .int file be limited to those appearing in the .alg file. Organizing .int files (collections of language tables) in this way will prevent confusion after several .int files are eventually created.

10.6 Uploading Language Tables

When a language table is uploaded from a keyboard, it can either be uploaded into a new language table (which is added to the bottom of the tree control) or uploaded into an existing language table.

When a keyboard language table is uploaded into a new table, all of the descriptive text in its form views will appear in English. E.g., if a Spanish language table is uploaded as a new table, its Spanish text will be described with English captions.



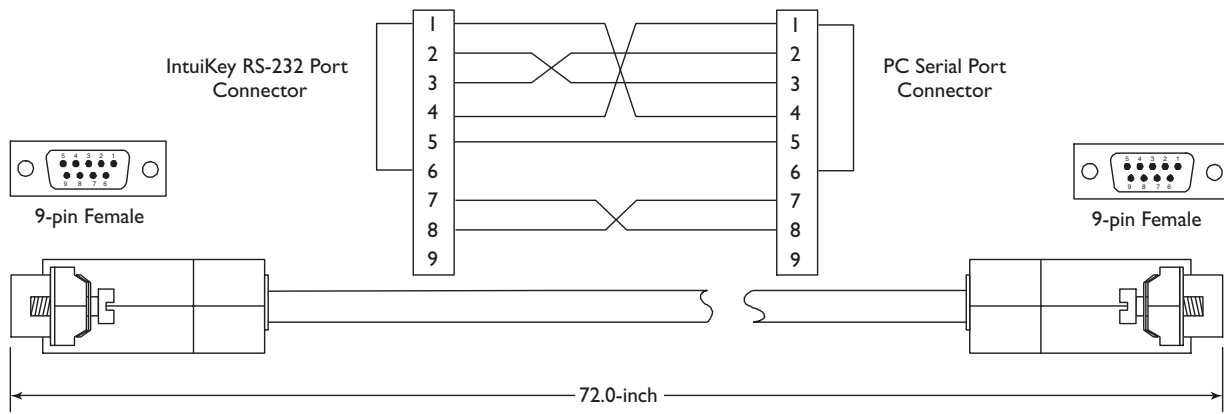
When a keyboard language table is uploaded into an existing table, the existing table's descriptive text remains unchanged.

APPENDIX A – Keyboard Font Map

The IntuiKey keyboard's font supports the characters shown below. The number appearing below each character is its **codepoint**.

SPACE	!	"	#	\$	%	&	'	()	*	+	,	-	.	/
32	33	34	35	36	37	38	39	40	41	42	43	44	45	46	47
0	1	2	3	4	5	6	7	8	9	:	;	←	=	→	?
48	49	50	51	52	53	54	55	56	57	58	59	60	61	62	63
@	A	B	C	D	E	F	G	H	I	J	K	L	M	N	O
64	65	66	67	68	69	70	71	72	73	74	75	76	77	78	79
P	Q	R	S	T	U	V	W	X	Y	Z	[\]	↑	_
80	81	82	83	84	85	86	87	88	89	90	91	92	93	94	95
`	a	b	c	d	e	f	g	h	i	j	k	l	m	n	o
96	97	98	99	100	101	102	103	104	105	106	107	108	109	110	111
p	q	r	s	t	u	v	w	x	y	z	{		}	~	
112	113	114	115	116	117	118	119	120	121	122	123	124	125	126	127
€		,	<i>f</i>	„	…	†	‡	^	%	Š	<	Œ		Ž	
128	129	130	131	132	133	134	135	136	137	138	139	140	141	142	143
	‘	’	“	”	•	–	—	~	™	š	>	œ		ž	ÿ
144	145	146	147	148	149	150	151	152	153	154	155	156	157	158	159
	ı	¢	£	€	¥	ı	§	¨	©	ª	«	¬	–	®	–
160	161	162	163	164	165	166	167	168	169	170	171	172	173	174	175
°	±	²	³	´	µ	¶	·	¸	¹	º	»				¿
176	177	178	179	180	181	182	183	184	185	186	187	188	189	190	191
À	Á	Â	Ã	Ä	Å	Æ	Ç	È	É	Ê	Ë	Ì	Í	Î	Ï
192	193	194	195	196	197	198	199	200	201	202	203	204	205	206	207
Ð	Ñ	Ò	Ó	Ô	Õ	Ö	×	Ø	Ù	Ú	Û	Ü	Ý	Þ	ß
208	209	210	211	212	213	214	215	216	217	218	219	220	221	222	223
à	á	â	ã	ä	å	æ	ç	è	é	ê	ë	ì	í	î	ï
224	225	226	227	228	229	230	231	232	233	234	235	236	237	238	239
Ð	ñ	ò	ó	ô	õ	ö	÷	ø	ù	ú	û	ü	ý	Ë	ÿ
240	241	242	243	244	245	246	247	248	249	250	251	252	253	254	255

APPENDIX B – RS-232 Interface Cable Detail (Part Number SI385)



APPENDIX C – ALLEGIANT COMMAND SCRIPTS AND THE KBD-SFTCFG

Allegiant Command Scripts are entered using the Command Script table in the PC-based Allegiant Server software package. There are three distinct types of Allegiant macros which can be programmed using the KBD-SFTCFG software, downloaded into the keyboard, then activated using the IntuiKey keyboard's softkey buttons.

Type 1: The **Star** function is the simplest macro. Only one of these types of macros can be configured in the Allegiant system. Any of the softkey Command Scripts can be used to activate the Star macro function by specifying the value **0** (zero) in the associated Command Script edit box (the default Star softkey menu can be found in the **80-Main Scripts** tree form). To define the function associated with the Star button activation, refer to the first example in the Command Script table.

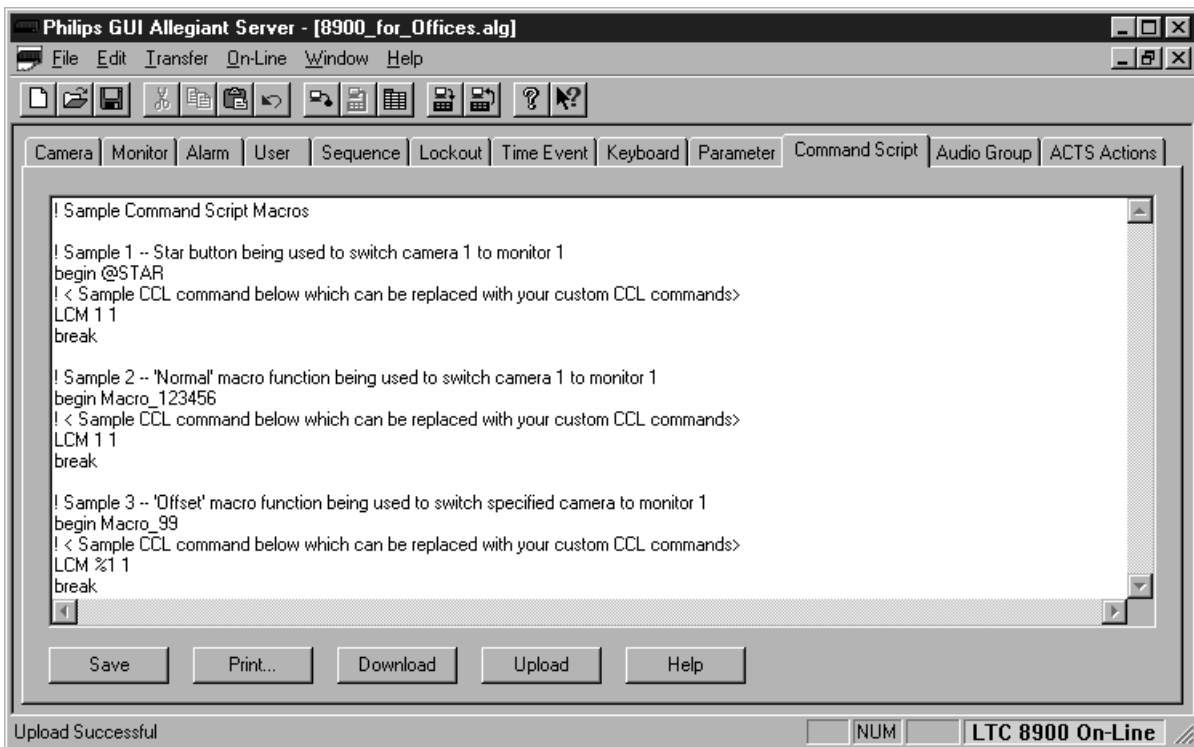
Type 2: There can be 999999 different **standard** macros. In this case, a softkey macro in the keyboard is assigned a unique 6 digit

number. The number corresponds to the macro number programmed into the Allegiant table. The sample below uses a standard macro which has been assigned the value **123456**.

Type 3: The **offset** macro is the most powerful macro. There can only be 99 different **offset** macros, but each can include an additional 4 digit number which is **passed** into the Allegiant Command Script. This allows configurations which utilize the same general function, but includes variable camera, monitor, pre-position, and other values specified by the user. The sample below uses an offset macro which has been assigned the value **99**.

An example of each of the three is shown below in the sample Command Script table below.

Refer to the **Allegiant PC Software Manual** and the **Allegiant Command Console Language (CCL) Manual** for more information on programming and using CCL commands.



APPENDIX D: INTUIKEY & KBD-SFTCFG COMPATIBILITY

Refer to the following chart to ensure compatibility of the KBD-SFTCFG IntuiKey software program to specific firmware versions of the IntuiKey Series Keyboard:

IntuiKey Series Firmware Version ¹	Compatible KBD-SFTCFG Language Table Version ²	
	Default Language Table Name:	"Meta Data Schema" number:
1.01 to 1.02	English, Spanish, Dutch, French, German, Italian; 1	"1"
1.03 and 1.10	English, Spanish, Dutch, French, German, Italian; 1	"1"
	English, Spanish, Dutch, French, German, Italian; 2	"2"
	English, Spanish, Dutch, French, German, Italian; 3	"3"

Notes:

1. IntuiKey firmware version number is displayed in the left LCD screen when the device is first powered up.
2. The "Meta Data Schema" number of the Language Table loaded into the KBD-SFTCFG software can be determined by selecting the **Property** option found under the program's **File** menu.

If necessary, updates for older versions of the KBD-SFTCFG software package and the latest IntuiKey firmware and Language Table files are available for download from the Software Update section of www.philipscsi.com.

Windows® and Windows NT® are registered trademarks of Microsoft Corporation.
Pentium® is a registered trademark of Intel Corporation.

3935 890 37313 02-25

© 2002 by Philips Electronics N.V.
© 2002 by Philips Communication, Security & Imaging, Inc.
All Rights Reserved. Philips® is a registered trademark of Philips Electronics N. A. Corp.
Data subject to change without notice

Free Manuals Download Website

<http://myh66.com>

<http://usermanuals.us>

<http://www.somanuals.com>

<http://www.4manuals.cc>

<http://www.manual-lib.com>

<http://www.404manual.com>

<http://www.luxmanual.com>

<http://aubethermostatmanual.com>

Golf course search by state

<http://golfingnear.com>

Email search by domain

<http://emailbydomain.com>

Auto manuals search

<http://auto.somanuals.com>

TV manuals search

<http://tv.somanuals.com>