

SPK 3700BC/61

Register your product and get support at  
[www.philips.com/welcome](http://www.philips.com/welcome)



SPK3700/61

EN Wired multimedia keyboard

KO 멀티미디어 키보드

**PHILIPS**

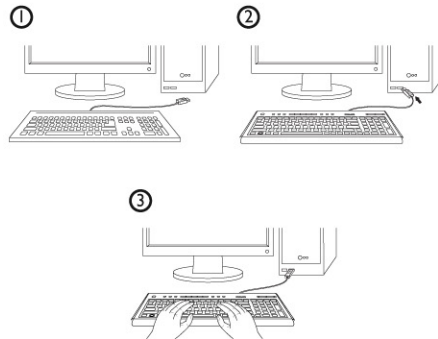
EN Complete kits includes

- Wired multimedia keyboard
- User Manual

System Requirement

- Microsoft Windows® 2000, ME, XP, Vista
- 1 x USB port

Quick Start



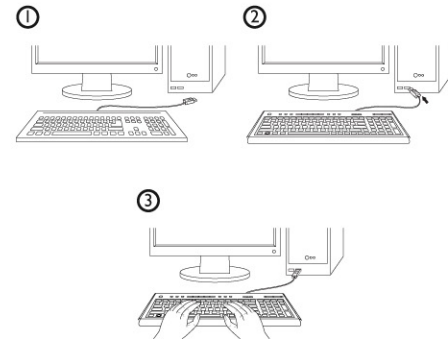
KO 전체 키트 포함

- 멀티미디어 키보드
- 사용 방법

호환 시스템

- Microsoft Windows® 2000, ME, XP, Vista
- 1 x USB 포트

사용 방법



Your wired keyboard

SPK 3700BC/61

Congratulations on your purchase and welcome to Philips!

To fully benefit from the support that Philips offers, register your product at [www.philips.com/welcome](http://www.philips.com/welcome)

Product Specification

1. Laser Printing
2. Soft touch comfort keys.
3. Hotkeys for multimedia control.
4. Spill-resistant keyboard survives accidental spillages. Tested under limited conditions (max.150 ml liquid spillage). Do not immerse keyboard in liquid.



제품 설명

1. 견고한 레이저 인쇄 키로 오래도록 사용 가능
2. 부드러운 촉감의 콤포트 키
3. 멀티미디어 컨트롤을 위한 단축키
4. 실수로 액체를 었질렀을 때 문제 없는 물 흘림 방지 키보드\*

\* 제한된 조건 하에서 테스트를 거쳤습니다(최대 150ml 액체 유출). 키보드를 액체 속에 담그지 마십시오.



English

Hereby, Philips Consumer Electronics, BU P&A, declares that this SPK3700 is in compliance with the essential requirements and other relevant provisions of Directive 1999/5/EC.

Troubleshooting

Problem

Keyboard does not work

- Tips**
1. Fully complete steps 1 and 2.
  2. Make sure the USB connector of your keyboard is properly plugged into the computer's USB port.
  3. Make sure your computer fulfills the minimum system requirement.
  4. If you are using a docking station or hub for a laptop computer, you may need to try another USB port located on the laptop itself.

Welcome to Philips!  
Register your products and get support at [www.philips.com/welcome](http://www.philips.com/welcome)

문제 해결

문제

마우스가 작동하지 않습니다.

- 끝**
1. 완전히 단계 1과 2.를 완료하십시오
  2. 당신의 키보드의 USB 연결관이 컴퓨터의 USB 항구로 제대로 폐쇄된다는 것을 확인하십시오.
  3. 당신의 컴퓨터가 최소 시스템 요구조건을 성취한다는 것을 확인하십시오.
  4. If 당신은 도킹 스테이션을 이용하고 있습니다 또는 휴대용 컴퓨터를 위한 허브, 당신은 휴대용 퍼스널 컴퓨터 자체에 있는 다른 USB 항구를 시도할 필요가 있을 수도 있습니다.

### Overview for Hotkeys

	EN	KO
	Overview for Hotkeys (from left to right)	단축키 개요 (왼쪽에서 오른쪽)
	Sleep Mode	잠 형태
	Stop Loading a website	웹사이트를 적재하는 중지
	Decrease Volume	감소 양
	Increase Volume	증가 양
	Mute	병어리
	Previous Track	이전 퀘도
	Next Track	다음 퀘도
	Play / Pause	놀이 / 쉼
	Stop Track	정지 퀘도
	Email	전자 우편
	My Favorites (Internet)	나의 마음에 드는 것 (인터넷)
	Launch Internet Browser	발사 인터넷 브라우저

### Health Warning

Improper work habits when using of a keyboard or mouse may result in discomfort or serious injury such as strain to your hands, wrists or other parts of your body.

Whether you are working or playing, it is important to avoid awkward postures and position your body comfortably. Not only can this improve your overall productivity, it may help you avoid MSDs (Musculoskeletal Disorders).

Changing your posture during extended tasks may also help you avoid discomfort and fatigue.

### Notes

---

---

---

---

---

---

---

---

---

---

---

---

---

---

---

---

---

---

---

---

---

---

---

---

---

---

### EMF

Electric-, Magnetic and Electromagnetic Fields (EMF)

- Philips Royal Electronics manufactures and sells many products targeted at consumers, which like any electronic apparatus, in general have the ability to emit and receive electro magnetic signals.
- One of Philips' leading Business Principles is to take all necessary health and safety measures for our products, to comply with all applicable legal requirements and to stay well within the EMF standards applicable at the time of producing products.
- Philips is committed to develop, produce and market products that cause no adverse health effects.
- Philips confirms that if its products are handled properly for their intended use, they are safe to use according to scientific evidence available health effects.
- Philips plays an active role in the development of international EMF and safety standards, enabling Philips to anticipate further development in standardization for early integration in its products.

### Environmental Information

**Disposal of your old product**  
Your product is designed and manufactured with high quality materials and components, which can be recycled and reused.  
When this crossed-out wheeled bin symbol is attached to a product it means the product is covered by the European Directive 2002/96/EC.

Please inform yourself about the local separate collection system for electrical and electronic products.

Please act according to your local rules and do not dispose of your old products with your normal household waste. The correct disposal of your old product will help prevent potential negative consequences for the environment and human health.



### Notes

---

---

---

---

---

---

---

---

---

---

---

---

---

---

---

---

---

---

---

---

---

---

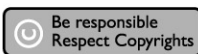
---

---

---

---

# PHILIPS



Specifications and type numbers are subject to change without notice.

Trademarks are the property of Koninklijke Philips Electronics N.V. or their respective owners

2007© Koninklijke Philips Electronics N.V.  
All right reserved

This document is printed on chlorine free produced paper  
www.philips.com/welcome

Printed in China



312247501209  
v.0731

### Warranty Card

### 보증 증명서

1 year warranty

Type : SPK3700BC/61

Serial no:

Date of Purchase

구입의 날짜

Dealer's name, address and signature  
상인의 이름, 주소 및 서명

[www.philips.com/welcome](http://www.philips.com/welcome)  
This document is printed on chlorine free produced paper.

Date subject to change without notice

Printed in China

### Notes

---

---

---

---

---

---

---

---

---

---

---

---

---

---

---

---

---

---

---

---

---

---

---

---

---

---

## Free Manuals Download Website

<http://myh66.com>

<http://usermanuals.us>

<http://www.somanuals.com>

<http://www.4manuals.cc>

<http://www.manual-lib.com>

<http://www.404manual.com>

<http://www.luxmanual.com>

<http://aubethermostatmanual.com>

Golf course search by state

<http://golfingnear.com>

Email search by domain

<http://emailbydomain.com>

Auto manuals search

<http://auto.somanuals.com>

TV manuals search

<http://tv.somanuals.com>