

See page 10 for
quick start

Ethernet Converter Device

FMod-TCP BOX

User Manual

Version 1.2



Version: 1.2
Last revision: August 14th, 2006
Printed in Switzerland

© Copyright 2003-2006 FiveCo Sàrl. All rights reserved.
The contents of this manual may be modified by FiveCo without any warning.

Trademarks

Windows® is a registered trademark of Microsoft Corporation.
Ethernet® is a registered trademark of Xerox Corporation.
Java® is a registered trademark of Sun Microsystems.
Philips® is a registered trademark of Koninklijke Philips Electronics N.V.
Borland® is a registered trademark of Borland Software Corporation.

Warning

This device is not intended to be used in medical, life-support or space products.

Any failure of this device that may cause serious consequences should be prevented by implementation of backup systems. The user agrees that protection against consequences resulting from device system failure is the user's responsibility. Changes or modifications to this device not explicitly approved by FiveCo will void the user's authority to operate this device.

Support

Web page: http://www.fiveco.ch/section_motion/support_motion_E.htm
e-mail: support@fiveco.ch

Table of Contents

1	Package and operating conditions.....	5
	Starter Kit contents	5
	Absolute maximum rating.....	5
2	Overview.....	6
	Applications.....	6
	Software operating principle.....	6
	Hardware description.....	7
	SOS button	9
3	Quick start.....	10
	Changing IP address	10
4	Controlling the FMod-TCP BOX by TCP or UDP.....	12
	General Information.....	12
	RS232 (TCP # 8000).....	12
	Device parameters and I/O, A/D and I2C features (TCP # 8010 or UDP # 7010).....	13
	Easy IP address config (UDP # 7010).....	19
	Checksum calculation.....	20
5	Java Applet.....	22
	Overview.....	22
	Main Config.....	23
	Test A/D and I/Os	24
	Test RS232	25
	Test I2C.....	26
6	Win32 Application.....	28
	Overview.....	28
	RS232 interface.....	30
	“Load web files” interface.....	31
	Main port interface	32
7	Registers management.....	34
	Memory Organization.....	34
	Full Register Description.....	35

Revision history

Revision	Date	Author	Note	Firmware version	Applet version	Win32 app version
1.0	05.05.06	AG	- First version	Since 1.0	Since 1.0	Since 3.0
1.1	09.06.06	AG	- Update specifications - Text corrections	Since 1.0	Since 1.0	Since 3.0
1.2	14.08.06	AG	- I2C speed correction. - Warning register bits correction.	Since 1.0	Since 1.0	Since 3.0

I Package and operating conditions

Starter Kit contents

The FMod-TCP BOX "Starter kit" should contain:

- FMod-TCP BOX device
- RS232 DSub cable
- DIN 41651 40 lines cable
- CD-Rom with dedicated software and Java applet sample
- This manual

Absolute maximum rating

Damage may occur if the device is operated using values beyond those mentioned below; device operation is not guaranteed.

Parameter	Conditions	Min	Typ	Max	Unit
Supply voltage		0	24	33	V
Supply current	No device connected to extension connector.		60	100	mA
Supply current	Device(s) connected to extension connector.			3	A
Outputs 1, 2 current	Relays.			1	A
Outputs 1, 2 voltage	Max voltage to GND.			50	V
Outputs 3-14 current				0.5	A
Outputs 15, 16 current				1	A
Inputs voltage		-15		28	V
+5V output current	Pin 17 on extension connector.			0.4	A
Power output current	Pin 40 on extension connector.			1	A
Operating temperature		0		70	°C
Storage temperature		-40		120	°C

All external pins are protected against destruction by ESD (2kV).

The power supply input is protected against over and inverted voltage by a 33V Zener diode. The protection is guaranteed during 10ms within the following current values:

- For inverted voltage: 100A (*the internal polifuse will cut the supply*).
- For over voltage: 3.25A max (***the diode will be destroyed before the fuse after 10ms!***).

Damages to the device due to over or inverted voltage are not covered by the warranty.

2 Overview

Applications

The FMod-TCP BOX is a TCP/IP server that allows system integrators to connect different devices such as home appliances, industrial sensors and industrial control systems directly to the Ethernet network, (10BaseT) and to remotely monitor and control those using standard protocols.

It can either be accessed through a TCP socket connection, from a computer, or through a simple Web Page in a standard browser which can be directly loaded to the device (max 44kb). The module is delivered with a default web page including a Java Applet that enables the controlling of the device.

The connection between this device and the user's product can be done through the following interfaces:

Qty	Type	Description	Port
1	RS232	Up to 115200 bps with or without hardware flow control	TCP 8000
2	Relays	Cut up to 50V 1A	TCP 8010 UDP 7010
14	24V Outputs	High side drivers	
16	24V Inputs	Digital 24V inputs or analog ± 12 V 10 bits A/D	
1	I2C bus	2 wires bus serial bus	

Note:

Some examples of applications illustrating the use of the FMod-TCP family with serial, I2C, I/O and A/D devices can be found on the FiveCo's website: http://www.fiveco.ch/section_motion/tcp_db/real_tcp_E.htm

Software operating principle

The operating principle for PC softwares that must exchange data with an FMod-TCP BOX device depends on which interface is used.

In case of **RS232** use, the operation is really simple. Any byte sent to port TCP #8000 will be redirected to the serial bus and any byte received from the serial bus will be redirected to the TCP connection.

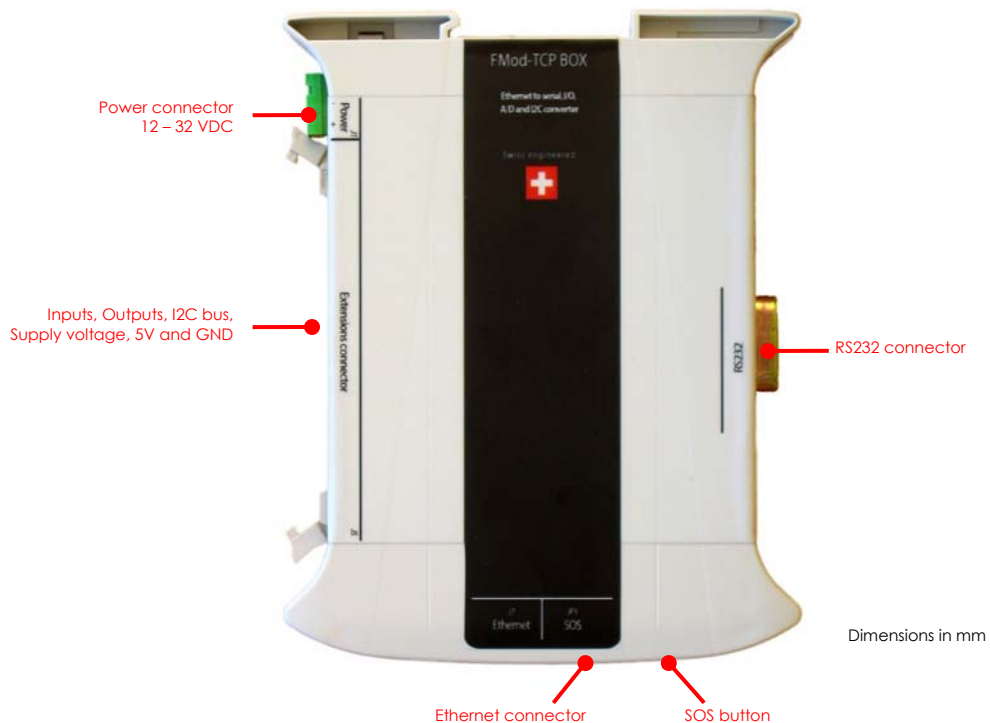
In the other cases (**I/O, A/D and I2C**), the software has to use a dedicated protocol layer on top of the TCP Layer (see chapter 4). This protocol is

"Question & Answer" oriented. The PC should send a Question, wait for the Answer and so on.

To configure the device's parameters and to access I/O and A/D features, the protocol uses an Internal Registers Access routine (see chapter 4 and 7).

The code samples available on the [FiveCo's web site](#) can help programmers get started with development.

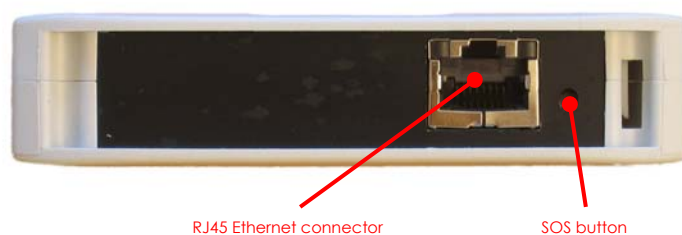
Hardware description



Beware:

Before connecting any cable to the device, shut down power supply!

Front view

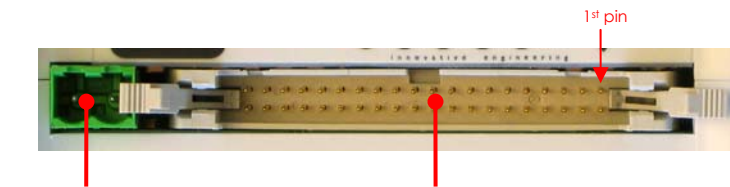


See page 9 to know how the SOS button works.

Two LEDs illuminate the SOS button and the displayed color as the following meanings:

Green	Everything is normal.
Red	There is an error. See Warning register to know the source of the error.
Red-Green blinking	The device found another one with the same IP address on the network. Disable the other device and reboot the FMod-TCP BOX.

Left side



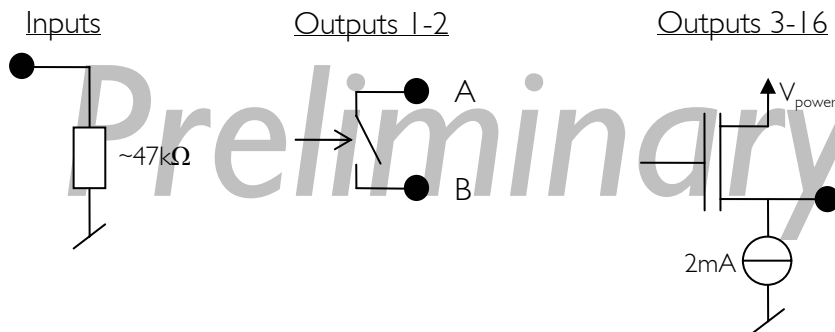
Power connector
12 – 32 VDC

Inputs, Outputs, I2C, Supply voltage, 5V and GND

1	Input 1	21	Output 16
2	Input 2	22	Output 15
3	Input 3	23	Output 14
4	Input 4	24	Output 13
5	Input 5	25	Output 12
6	Input 6	26	Output 11
7	Input 7	27	Output 10
8	Input 8	28	Output 9
9	Input 9	29	Output 8
10	Input 10	30	Output 7
11	Input 11	31	Output 6
12	Input 12	32	Output 5
13	Input 13	33	Output 4
14	Input 14	34	Output 3
15	Input 15	35	Output 2 B (relay 2)
16	Input 16	36	Output 2 A (relay 2)
17	+5V	37	Output 1 B (relay 1)
18	GND	38	Output 1 A (relay 1)
19	I2C clock (SCL)	39	Supply GND
20	I2C data (SDA)	40	Supply voltage (max 1A) *

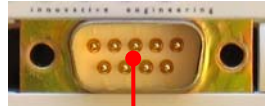
*Do not supply the device through this pin. Use power connector.

Here are the equivalent electrical specifications of I/O pins (illustrated by black dots):

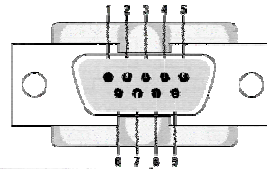


The I2C pins are provided through a Philips PCA9512 driver chip. 10k Ω pull-ups are connected to SCL and SDA.

Right side



Standard RS232 DSub 9 connector
(male like on a computer)



1	NC	6	NC
2	Receive data	7	Request To Send
3	Transmit data	8	Clear To Send
4	NC	9	NC
5	GND		

The RS232 connector is the same as the ones found on any computer.

SOS button

A button is dedicated to restore default IP address or factory settings.

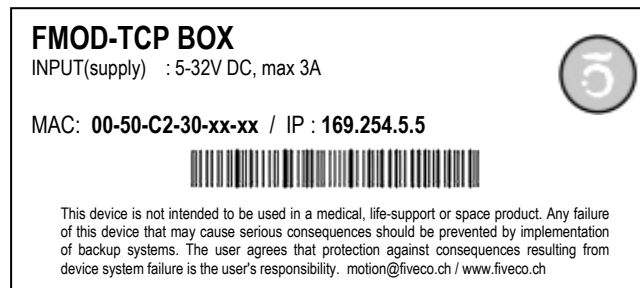
There are two possible scenarios:

- If you press it **while the device is running**, the IP address will be restored as soon as all TCP connections are closed. *Warning: you have to send the Save Settings command to the device in order to save it into EEPROM.*
- If the **button is pressed during startup**, the default IP address and factory settings of all parameters will be restored AND saved into EEPROM. In this case, you do not need to send the Save Parameters command.

3 Quick start

This section is intended to help users to quickly plug the module into their system and establish a connection between the computer and the device.

You can find the device's factory communication settings on the following label.



The Ethernet MAC Address is fixed and cannot be changed. The IP Address can be changed. The complete procedure is described below.

Note: *If the device has already been configured and the IP address has been changed to an unknown value, you can retrieve an SOS IP address (the one on label) by pressing the "SOS button" during the normal operation of the device. (See section **Erreur ! Source du renvoi introuvable.**).*

Changing IP address

To easily change the factory IP address, use the Win32 software provided on the CD-Rom.

1. Plug your new device on your PC network.
2. Start the Win32 application.
3. Click on "File->Easy change IP address".
4. The software will scan the network and display a list of all FiveCo's devices found.
5. Select the MAC address corresponding to your new device.
6. If you have more than one network adapter on your PC, the software will ask you to select the one which is connected to the same network as the FMod-TCP BOX.
7. The software will suggest a new IP address with the last byte left open. Choose a new IP (**Not already used on your network!!**) and click the "Change IP address" button.

That's it! The device has a new address and a new subnet mask (the same as your PC). They are automatically saved into EEPROM.

FMod-TCP User Manual v.2.8

You can now connect the device with the Win32 software or open its web page by typing its new IP address into a web browser.

Notes:

- The IP address won't be changed if a TCP connection exists with the device.
- The protocol used to change the IP address is described later in this manual.

4 Controlling the FMod-TCP BOX by TCP or UDP

General Information

All the device's parameters (configuration registers) and features can be accessed through a TCP or UDP port.

In addition, an HTTP-TCP port is available for web pages downloading and another TCP port for RS232 bus access.

Those ports are:

- TCP Port **#80** for HTTP communication.
- TCP Port **#8000** for RS232 transceiver.
- TCP Port **#8010** to access I/O registers (see chapter 7) and I2C bus.
- UDP Port **#7010** to access I/O registers (see chapter 7) and I2C bus.

With regards to TCP connections, the device allows up to **4 simultaneous connections**.

These ports are described below.

RS232 (TCP # 8000)

The RS232 bus of the microcontroller is accessible through the TCP port number 8000. The module acts simply as a transceiver for this port. Any byte sent from the network (ex: TCP-IP from a PC) to the module will be sent to the other side's RS232 bus, and vice versa. Thus there is no particular protocol dedicated to this feature. See later chapters to know how to change parameters such as baud rate and hardware flow control.

Note: This port supports only one user at a time.

RS232 fixed settings: *No parity / 1 Start Bit / 8 Data Bits / 1 Stop Bit*

Important note about baud rate greater than 9600bds:

Common TCP/IP stacks (on PC, Unix station ...) use a delay of 200ms for the acknowledgement of the TCP received data packets. This is done to reduce traffic on the network because TCP allows the acknowledgement of several packets at one time.

Unfortunately, the FMod-TCP BOX device needs this acknowledgement to remove the data from its internal RS232 receive buffer (if no acknowledge is received from the PC, the module will resend those data).

So, with speeds greater than 9600bds, the buffer may be filled faster than data can be sent by TCP and part of those will be lost if no RS232 hardware flow control is used between the FMod-TCP BOX and the RS232 device (CTS and RTS lines).

If you cannot use hardware flow control on RS232 bus and you have to get more than 2048 bytes at one time, the solution is to reduce the TCP acknowledgement delay on your computer.

For Windows™ 2000/XP users, you can add/change the following value in the registry. **BEWARE:** *improperly changes done in the Windows registry can result in a system crash! Such changes are the user's full responsibility!*

Entry: `HKey_Local_Machine\SYSTEM\CurrentControlSet\Services\
Tcpip\Parameters\Interfaces\Interface-name`
Key: `TcpDelAckTicks`
Value: `DWORD with value 0x00`

The **interface-name** is the registry name (32 digits number) of your Ethernet card which you use to access the module.

The following web page describes this feature in details:

<http://www.microsoft.com/resources/documentation/Windows/2000/server/reskit/en-us/regentry/58801.asp?frame=true>

Device parameters and I/O, A/D and I2C features (TCP # 8010 or UDP # 7010)

The main TCP port number 8010 or UDP port number 7010 can be used to change some important parameters of the module:

- **TCP timeout value**
- **IP address**
- **Subnet mask**
- **Module name**
- **Baud rate and flow control**
- **I2C speed**

The user should use the Win32 application enclosed in the package or the default java applet loaded in the module to change those parameters. If the user wants to change the parameters by himself, the protocol is defined below.

This port is also used to **access Inputs and Outputs value, A/D conversion result registers** (see page 34 for a complete description of those registers) **and I2C bus**. The I2C feature is described after "registers access feature".

The last feature accessible through this port is the "Easy IP config" that is used in the "Quick start" chapter of this document.

Registers access feature

TCP/IP works in big endian: most significant byte first, followed by least significant byte.

The access to the data is done through an easy (6 byte header) protocol over TCP.

Structure of each packet:

1. **Function ID (2 bytes),**
2. **Transaction ID (2 bytes)**
3. **Length of the parameters (2 bytes)**
4. **Parameters (X byte)**
5. **Checksum (2 bytes) (described later in this chapter)**

The user (sender) defines the values of the Transaction IDs himself. The module that receives a command sends back an answer (for every command). The answer contains the same Transaction ID as the corresponding command sent. The user is also able to check execution of each command.

Read register(s) command:

Byte#		Number of bits	Example
0x00	Read (0x0021)	16 bits	0x0021
0x02	TransactionID	16 bits	0x1B34
0x04	Number of registers to read (X)	16 bits	0x0001
0x06	X * Registers Addresses	X * 8 bits	0x02
0x06+X	Checksum	16 bits	0x...

The maximum number of registers that can be read at one time is almost 30. The answer sequence should not be greater than 180 bytes. If the number of registers is too big, the FMod-TCP BOX will answer only with the value of some of them.

The module answers with the following sequence:

Byte#		Number of bits	Example
0x00	Read Answer (0x0023)	16 bits	0x0023
0x02	TransactionID (same as demand)	16 bits	0x1B34
0x04	Number of bytes in answer	16 bits	0x0019
0x06	Register address	8 bits	0x02
...	Register value	8–128 bits (16B)	0x12345
The two previous entries are replicated for every register that has been asked for reading			
...	Checksum	16 bits	0x...

Write register(s) command:

Byte#		Number of bits	Example
0x00	Write (0x0022)	16 bits	0x0022
0x02	TransactionID	16 bits	0x1B34
0x04	Number of bytes in command	16 bits	0x0003
0x06	Register Addresses	8 bits	0x02
0x07	Register value	8 – 64 bits	0x1234
The two previous entries are replicated for every register that has been asked for reading			
...	Checksum	16 bits	0x...

The max length of this sequence is 180 bytes.

The module answers with the following sequence:

Byte#		Number of bits	Example
0x00	Write Answer (0x0024)	16 bits	0x0024
0x02	TransactionID (same as demand)	16 bits	0x1B34
0x04	0x0000	16 bits	0x0000
0x06	Checksum	16 bits	0x...

I2C feature

The Inter-IC bus, commonly known as the I²C bus, is a control bus that provides the communications link between integrated circuits in a system. Developed by Philips in the early 1980's, this simple two-wire bus has become the de facto worldwide standard for system control, finding its way into everything from temperature sensors and voltage level translators to EEPROMs, general-purpose I/O, A/D and D/A converters, CODECs, and microprocessors of all kinds.

You can find the I2C's specifications on the Philips web site at the following link: <http://www.semiconductors.philips.com/>

The I2C protocol can access a device by three different manners:

- **Write** (Start, AddW, Byte1, Byte2, ..., Stop)

St	AddW	A	Bytes to W	A	Sp
----	------	---	------------	---	----

- **Read** (Start, AddR, Byte1, Byte2, ..., Stop)

St	AddR	A	Bytes to R	nA	Sp
----	------	---	------------	----	----

- **Read After Write** (Start, AddW, ByteW1, ByteW2, ..., ReStart, AddR, ByteR1, ByteR2, ...Stop)

St	AddW	A	Bytes to W	R	A	AddR	A	Bytes to R	nA	Sp
----	------	---	------------	---	---	------	---	------------	----	----

To be able to do all of these 3 sequences, use this command:

Byte#		Number of bits	Example
0x00	I2CRWwithAck (0x0007)	16 bits	0x0007
0x02	TransactionID	16 bits	0x1B34
0x04	LengthOfParameters (X + 3)	16 bits	0x0005
0x06	7 bits Address (bit 7 = 0)	8 bits	0x28
0x07	X (number of bytes to write)	8 bits	0x02
0x08	xBytes	X bytes	0xAFID
...	Y (number of bytes to read)	8 bits	0x05
The four previous entries can be replicated to access the same or other I2C slaves within this command sequence.			
	Checksum	16 bits	0x...

If X = 0, the Read method is used.

If Y = 0, the Write method is used.

If X & Y ≠ 0, the Read after Write method is used.

The answer sequence is the following one:

Byte#		Number of bits	Example
0x00	I2CReadAnswer (0x0008)	16 bits	0x0008
0x02	TransactionID (same as demand)	16 bits	0x1254
0x04	Number of bytes in answer	16 bits	0x0005
0x06	Answer bytes	Y bytes	0x1A25...
...	Ack state of the I2C com.	1 byte	0x87
If the same or other I2C slave have been accessed in the command, the answer bytes and ack state is added here.			
...	Checksum	16 bits	0x...

The "Ack state" byte is composed of the following bits:

0	Address ack in write sequence	0 = No answer to this address 1 = ack received
1	Bytes written ack (each byte was acked)	0 = Bytes not acknowledged 1 = ack received
2	Address ack in read sequence	0 = No answer to this address 1 = ack received
3-6	Reserved	-
7	Must be always 1	1

The user can use these bits to check for the presence of his I2C devices and monitor hardware issues.

Note that the max length of those sequences is 180 bytes. **Pay close attention to building sequences that do not exceed this and not to ask too much byte in answer !**

The FMod-TCP BOX translates automatically those sequences to I2C sequences. **It is mandatory that the sequence has to be transmitted within one TCP packet.** Otherwise, the FMod-TCP BOX will ignore it.

I2C Bus scanning

The following command allows user to ask an I2C bus scanning to list which addresses answer with an acknowledge.

I2C scan command:

Byte#		Number of bits	Example
0x00	I2CScan (0x0005)	16 bits	0x0005
0x02	TransactionID	16 bits	0x2001
0x04	Number of addresses to scan	16 bits	0x0001
0x08	X Addresses	X bytes	0x1A
	Checksum	16 bits	0x...

The FMod-TCP BOX answers with the following sequence:

Byte#		Number of bits	Example
0x00	I2CScanAnswer (0x0006)	16 bits	0x0006
0x02	TransactionID (same as demand)	16 bits	0x2001
0x04	Number of valid addresses	16 bits	0x0001
0x06	Valid addresses list	n bytes	0x1A
	Checksum	16 bits	0x...

Note:

If there is no address in the I2C Scan command, the FMod-TCP BOX will scan all addresses between 1 and 127!

I2C speed change (advanced features)

The I2C bus speed can be changed at any time by changing the content of the I2CSPD parameter.

Beware:

1. Do not change I2C speed if it is not mandatory. Speed greater than 100kHz are not supported by all I2C slaves.
2. Do not change I2C speed during I2C communication.

3. The I2C controller does not match all I2C specifications at speed higher than 100kHz. This feature will therefore not work with all I2C slaves.

The value of the I2CSPD parameter must be computed with the following formula:

$$I2CSPD = \frac{10^7}{I2CSpeed_{wanted}} - 1$$

The I2C speed cannot be saved in EEPROM.

Easy IP address config (UDP # 7010)

A really useful feature of the UDP port #7010 is the "Easy IP config" one.

The user who wants to design his own software can use this feature to do a "quick start/install" method. Indeed, since this protocol uses a broadcast UDP packet, even if the device is not in the same subnet, it should receive its new IP address and subnet mask.

Procedure:

Send a UDP broadcast message (using a local or direct broadcast IP address) to your network (inside which the FMod-TCP BOX is connected) with the following command:

Byte#		Number of bits	Example
0x00	Change IP fct (0x002A)	16 bits	0x002A
0x02	TransactionID	16 bits	0x0000
0x04	Length of params (0x000E)	16 bits	0x000E
0x06	FMod-TCP BOX Mac Address	6 bytes	0x0050C2308101
0x0C	FMod-TCP BOX new IP Address	4 bytes	0xC0A81064
0x10	FMod-TCP BOX new SubnetMask	4 bytes	0xFFFF0000
0x14	Checksum	16 bits	0x...

If the FMod-TCP BOX recognizes its MAC address, it will answer this command with a simple acknowledges and change its IP address and subnet mask IF NO TCP CONNECTION IS MADE TO THE DEVICE.

Byte#		Number of bits	Example
0x00	Change IP fct ack (0x002B)	16 bits	0x002B
0x02	TransactionID	16 bits	0x0000
0x04	Length of params (0x0000)	16 bits	0x0000
0x14	Checksum	16 bits	0x...

Checksum calculation

This checksum is the same as the IP checksum.

Definition: sum of 1's complement of all 16 bits words of whole message (FiveCo packet) except checksum bytes.

Note: all values are unsigned!

Sequence:

1. Clear accumulator

Loop

- x. Only if last word is not made of two bytes, the data byte is the upper byte (big endian)
2. Compute 1's complement of each 16bits word, result is 16bits
3. Convert last result from 16 bits to 32 bits, result is 32bits: 0x0000+last result
4. Add last result to the 32 bits accumulator

Try the Loop

5. Convert accumulator in two 16bits words
6. Add those two 16bits words, result is 16bits word.
7. If an overflow occurs with the last addition (Carry), add 1 to the last result.
8. Last result is the final result

Example (in hexadecimal):

```
!0x0021 (0XFFDE) → 0x0000FFDE (Read)
+!0x1234 (0xEDCB) → 0x0001EDA9 (TransID)
+!0x0003 (0xFFFFC) → 0x0002EDA5 (3 reg to read)
+!0x0A10 (0XF5EF) → 0x0003E394 (reg 0A,10,02)
+!0x02(00) (0XFDFE) → 0x0004E193
```

Note that in this case a last 00 is implicitly used. (02 → 02 00).

```
0x0004 + 0xE193 = 0xE197, (carry=0)
0xE197 + carry = 0xE197
```

Checksum = 0xE197

Here is an example of a checksum calculation function in C:

```

int RetChecksum(Byte* ByteTab, int Size)
{
    // This function returns the calculated checksum
    unsigned int    Sum=0;
    bool            AddHighByte=true;
    unsigned int    ChecksumCalculated;

    for(int i=0;i<Size;i++)
    {
        if(AddHighByte)
        {
            Sum+= (ByteTab[i]<<8)^0xFF00;
            AddHighByte=false;
        }
        else
        {
            Sum+= (ByteTab[i]^0x00FF);
            AddHighByte=true;
        }
    }
    if (AddHighByte==false)
        Sum+= 0xFF;

    ChecksumCalculated = ((Sum>>16) &0xFFFF) + (Sum&0xFFFF) ;

    ChecksumCalculated = ((ChecksumCalculated>>16) &0xFFFF)
        + (ChecksumCalculated&0xFFFF) ;

    return ChecksumCalculated;
}

```

This function needs a Byte array (ByteTab) containing the command sequence and this array's length (Size) as input, it returns the checksum as an int.

5 Java Applet

A specific Java Applet is provided with the module to control any of its ports without having to write any specific code.

Overview

To connect to the http server on the device, simply open your web browser and type the IP address of the module. Example with default address:

`"http://169.254.5.5"`

The applet is downloaded from the device to your computer and runs as a local process (on your computer). You need to use an internet web browser that is compatible with Java I.I.

Please note that on an MSWindows™ based computer, a few seconds delay can occur when you download the applet due to an MSWindows™ NetBios issue.

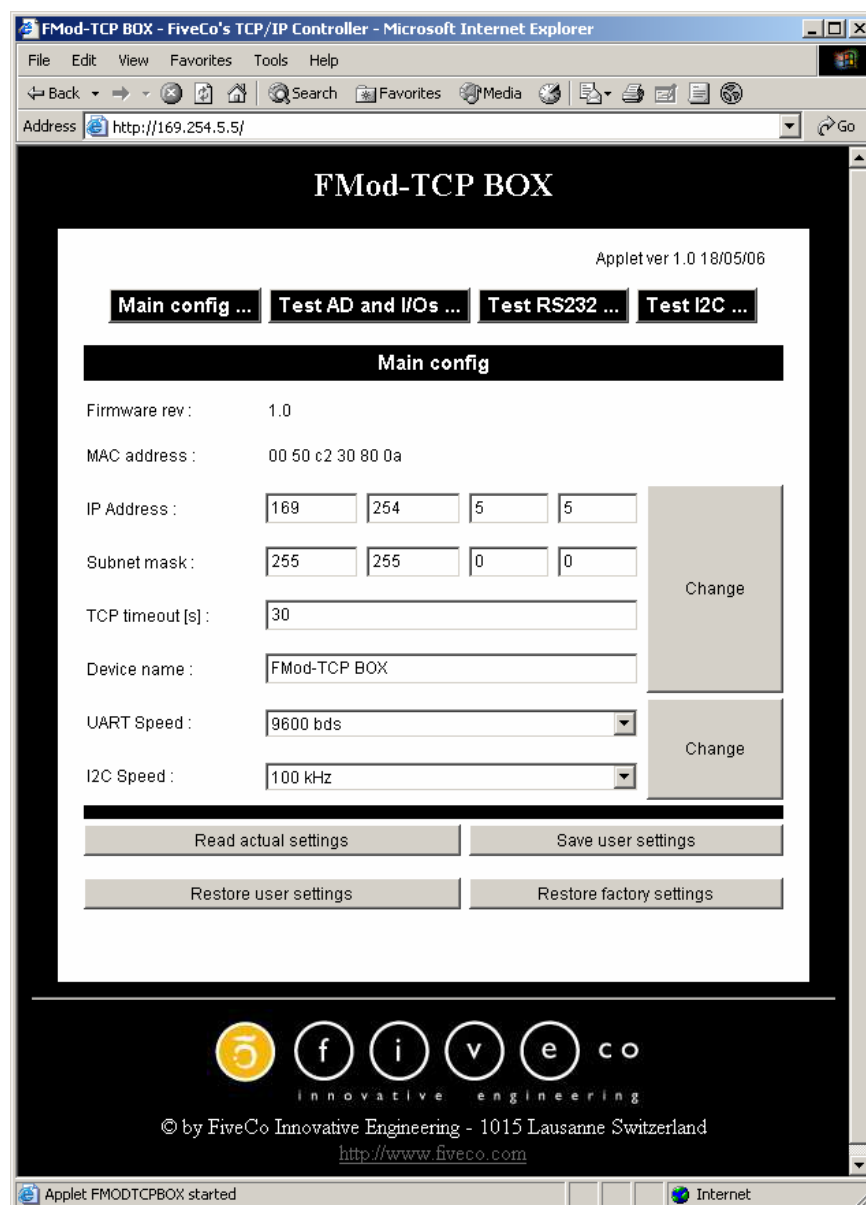
The navigation through the four panels of the applet is done through the menu bar:

Main config ... **Test AD and I/Os ...** **Test RS232 ...** **Test I2C ...**

Main Config

The Main panel shows the general information related to the device.

- The first part allows the user to change the main settings of the device. Don't forget to use the "Save user parameters" button to make changes permanent!
- The second part allows the user to save/restore user and factory parameters and to read the actual configuration of the device if it has been modified by another application.



Test A/D and I/Os

This page can be used to access Inputs state and voltage and change Outputs state.

The Inputs state and voltage are regularly updated automatically (20 kHz). You can change the low to high threshold of the inputs between 0 and 24V.

This page display also the device supply voltage and warnings (Too low/high supply voltage, Outputs driver over current or temperature).

FMod-TCP BOX
Applet ver 1.0 18/05/06

Main config ... **Test AD and I/Os ...** Test RS232 ... Test I2C ...

Test AD and I/Os

Inputs :	State	Voltage	Outputs :	Supply voltage :
1	High	10.54 V	Low	11.9 V
2	High	8.52 V	Low	
3	High	7.0 V	Low	Warnings :
4	Low	5.62 V	Low	LowV
5	Low	4.51 V	Low	
6	Low	3.66 V	Low	
7	Low	2.92 V	Low	
8	Low	2.37 V	Low	
9	Low	1.87 V	Low	
10	Low	1.49 V	Low	
11	Low	1.17 V	Low	
12	Low	0.90 V	Low	
13	Low	0.67 V	Low	
14	Low	0.46 V	Low	
15	Low	0.26 V	Low	
16	Low	0.8 V	Low	

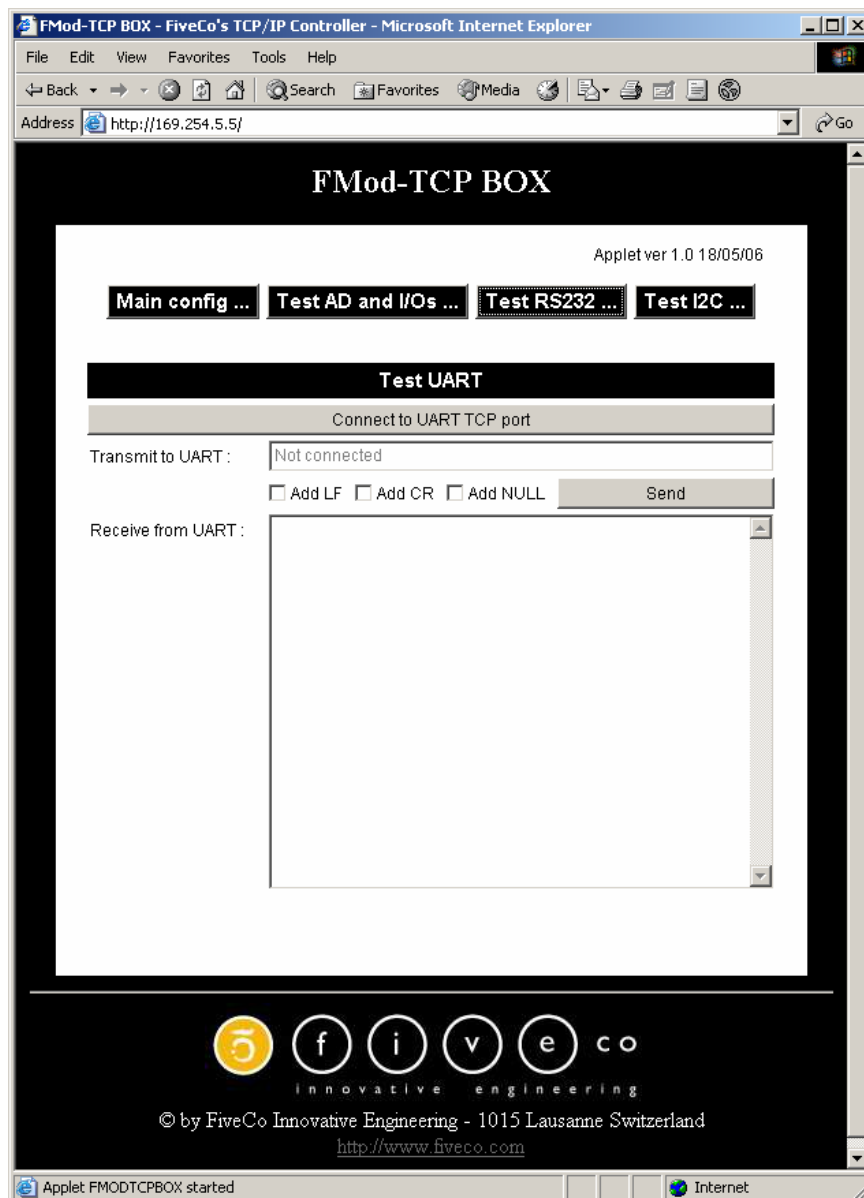
Analog threshold [M]:

FiveCo
innovative engineering
© by FiveCo Innovative Engineering - 1015 Lausanne Switzerland
<http://www.fiveco.com>

Test RS232

This page can be used to access RS232 bus.

If you click on the "Connect to RS232 TCP Port" you can send ASCII data to RS232 bus and receive data from it (only ASCII is visible in this application).



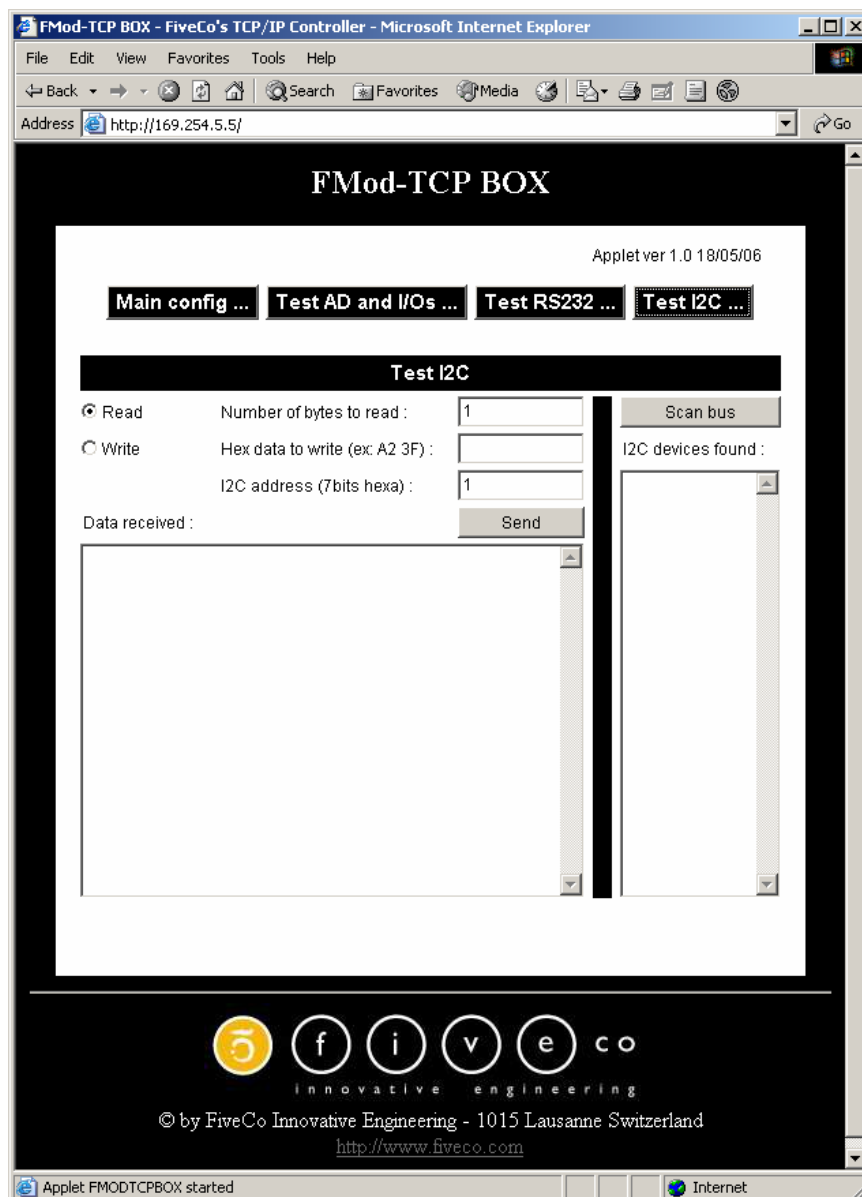
You can check "Add LF", "Add CR" and/or "Add Null" boxes to add a Line Feed, a Carriage Return and/or a Null Byte at the end of the ASCII chain sent to the device.

Test I2C

This page can be used to access I2C bus.

The panel is divided in two parts:

- The part on the right allows scanning the I2C bus to find available slave devices.
- The part on the left allows sending a read or a write command to a device on the I2C bus.



You should first check if you want a read or a write. Then you have to write hex data to write to the device in the "Hex data to write" field (if you

FMod-TCP User Manual v.2.8

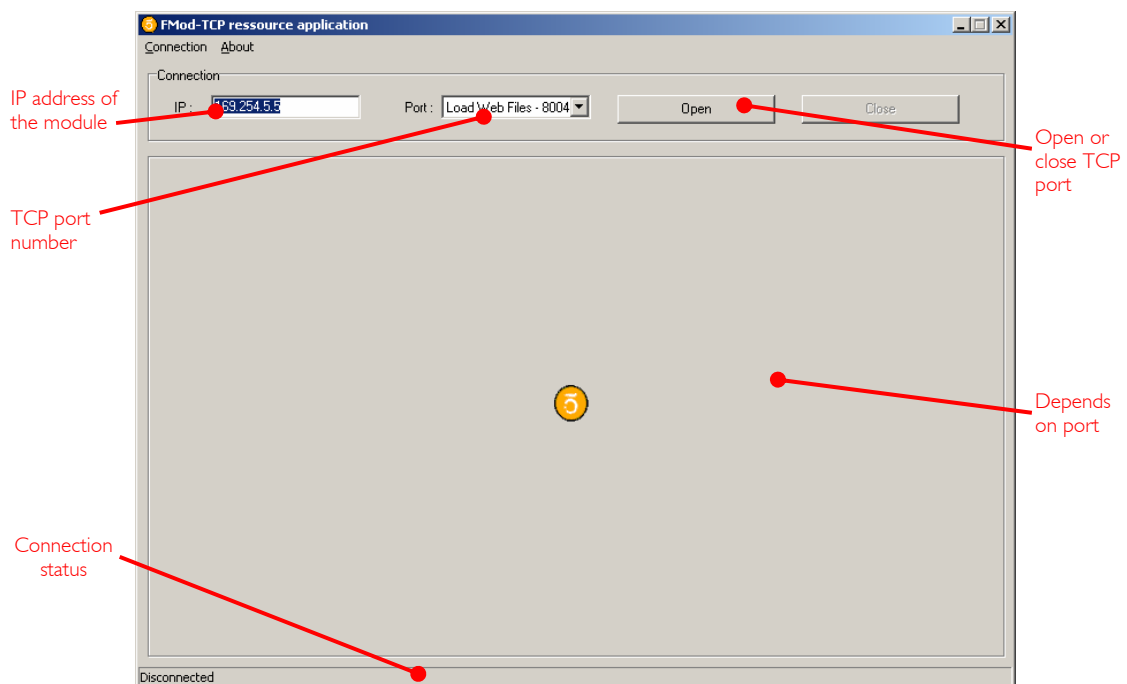
checked the "Read" box, the FMod-TCP BOX will use the read after write I2C feature).

After writing the I2C address (7bits hexa) and the number of bytes to read (if applicable), click on the "Send" button. The answer is displayed in hex in the "Data received" field.

6 Win32 Application

A specific application is provided with the module to control any of its ports without having to write a specific code.

Overview

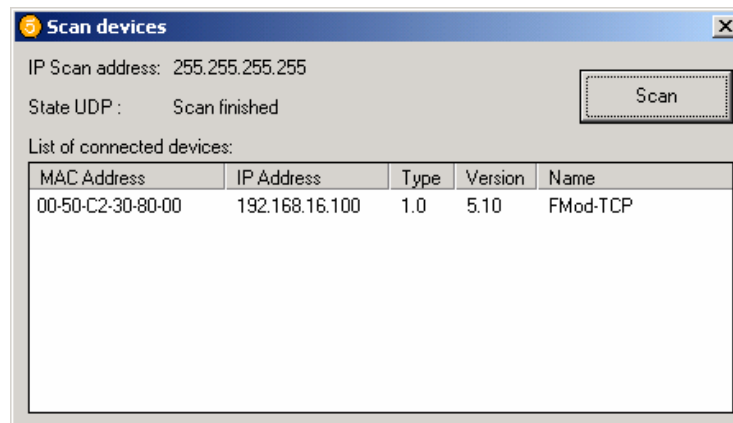


To open a TCP port on the module, the user has to set the correct IP address of the module, to choose the correct TCP port in the list and to click on the "Open" button. To close the port, simply click on the "Close" button.

The status bar displays the status of the connection:

- **Connected**
- **Disconnected**
- **Error of connection** (if connection was not established within 30s)

Note: If you forgot the IP address of the module, you can use the "Scan network" feature of the "Connection" menu.



This application uses the IP address of your computer and its subnet mask to find the scan broadcast address. When you click on scan, a broadcast message will be sent to all devices in your subnet and answers will be listed.

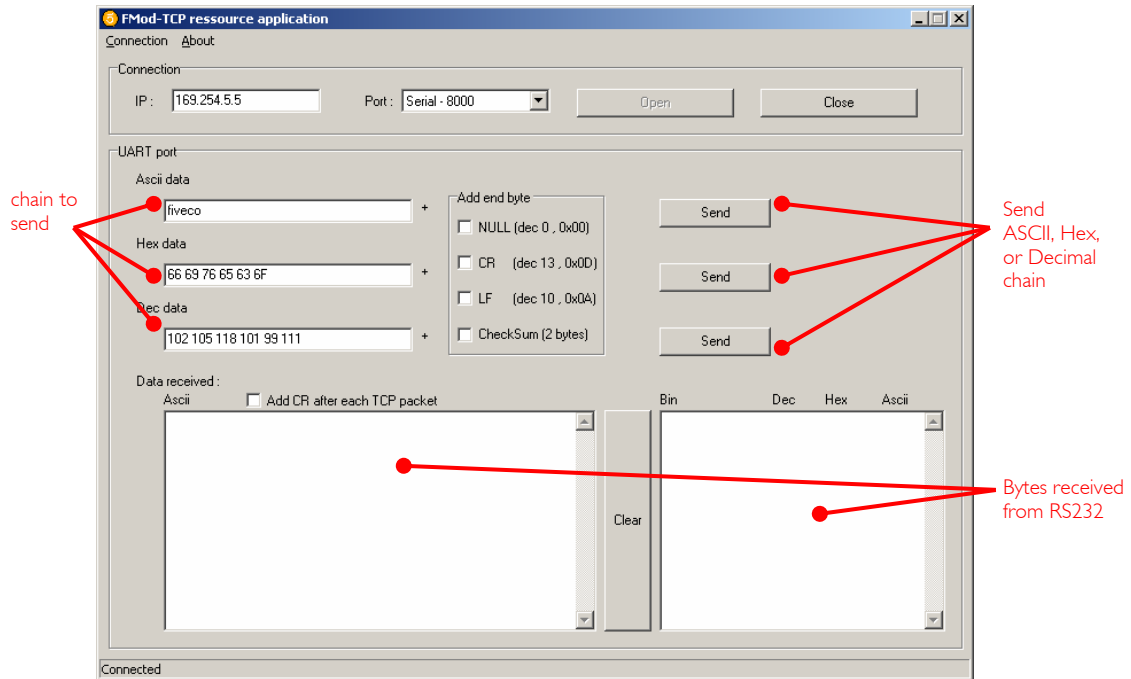
WARNING: it only works with devices in your subnet!

How does it work?

When you click "Scan", the software simply sends a "Read registers" command to a broadcast address on UDP port number 7010 (see chapter about main port at page 13).

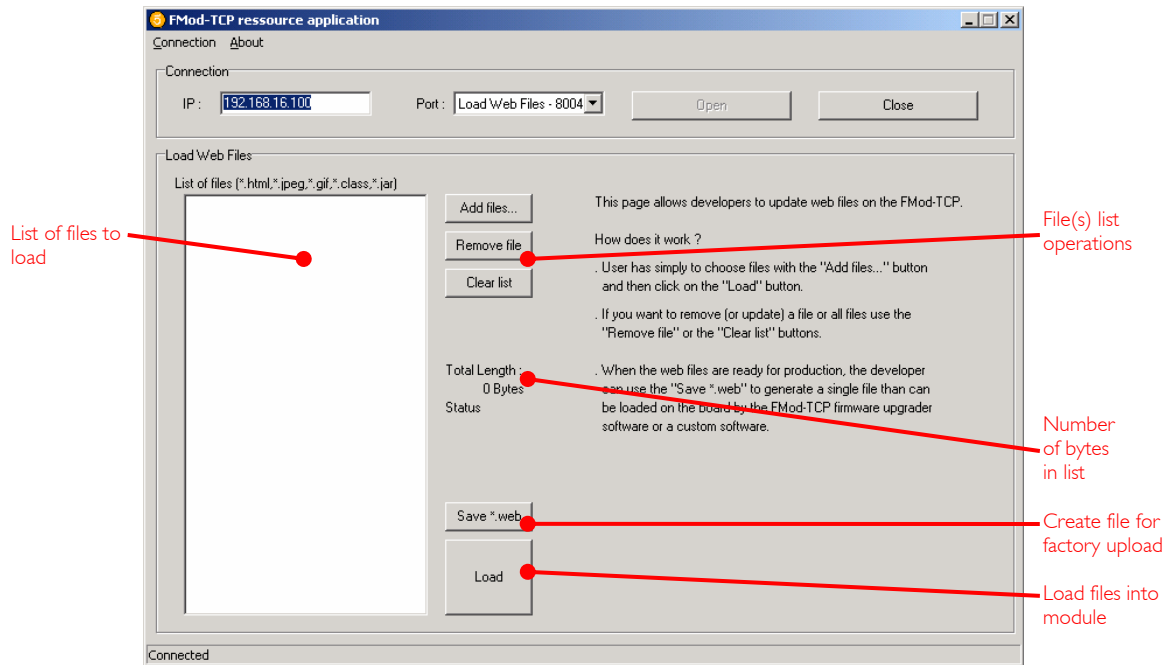
The broadcast address depends on the network subnet mask present on your PC.

RS232 interface



The RS232 interface is easy to use. Just write the ASCII, HEX or decimal string in the dedicated text box and click corresponding "Send" button. The received bytes are displayed into the "Data received" boxes (same data but different representation).

“Load web files” interface

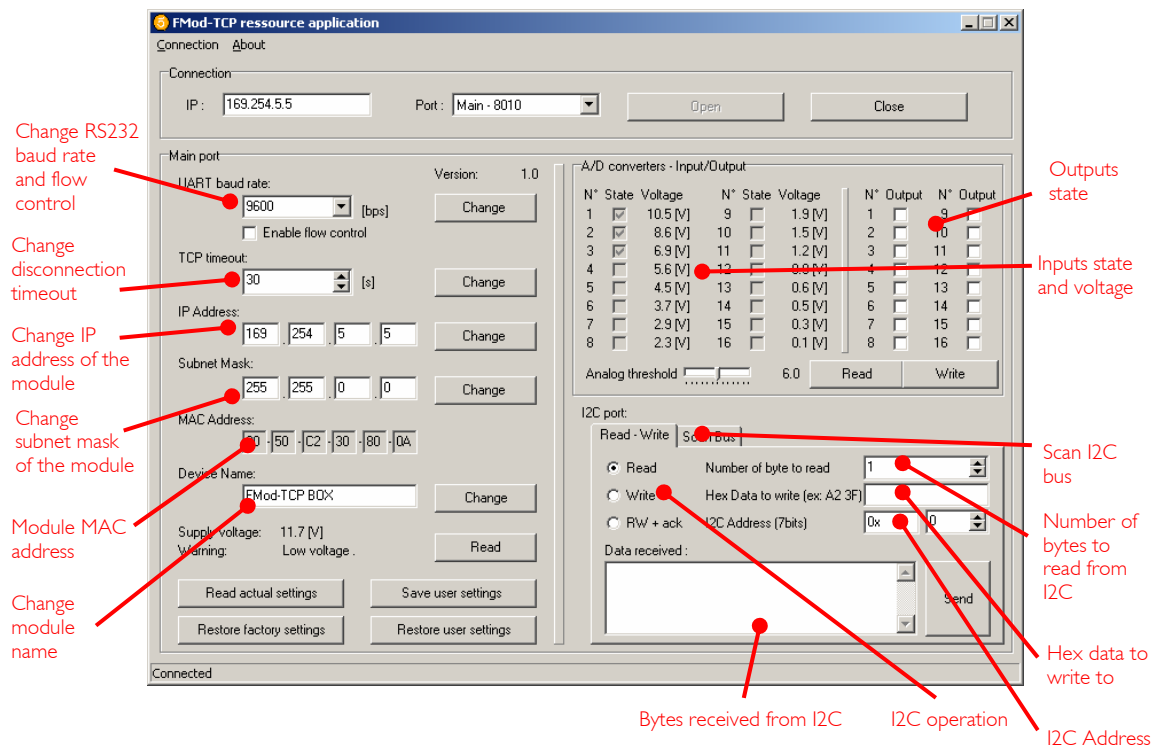


This option allows users to load their personal web files (html, java, jpeg, gif, txt ...) into the flash memory. A maximum of **44kB** is available for that application.

An example of pages and Default Java Applet code is available on the Starter Kit CD Rom or on the FiveCo's web page.

For factory web upload, the user can save a single file yourname.web. See FMod-TCP BOX_WebPageUploading manual on the FiveCo web site.

Main port interface



The configuration interface allows the user to change the device's settings.

RS232 baud rate: The user can change the RS232 baud rate and enable or disable the hardware flow control (CTS/RTS).

TCP timeout: The user can change the number of seconds allowed before TCP port is disconnected. This feature avoids the problems due to the crash of a TCP client (PC).

IP address: The user can change the IP address of the module.

Subnet mask: The user can change the subnet mask of the module.

MAC address: Mac address of the module (cannot be changed).

Name: Module name.

The Inputs state and voltage are simply obtained with a click on the corresponding "Read" button.

The Outputs state and the analog threshold are send to the device with a click on the corresponding "Write" button.

The I2C interface is an easy way to test the I2C connection between the module and the user's electronic. The user has to choose between an I2C Read or Write operation.

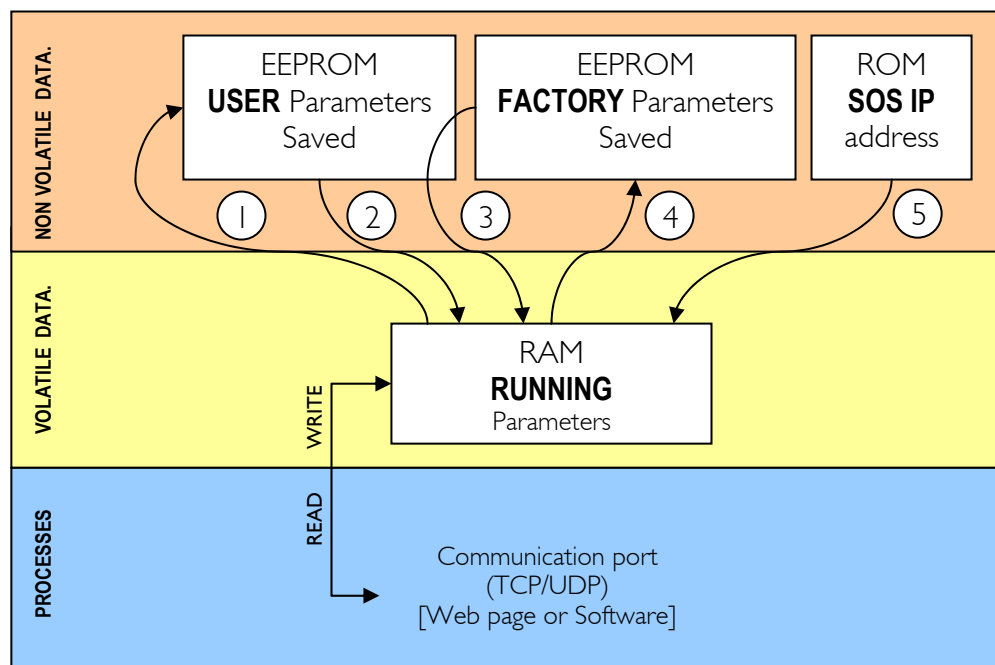
In **Write mode**, the bytes (in hexadecimal like 41 42 45 separated by spaces!) must be written in the dedicated line and the I2C address in the dedicated Address space (in hexadecimal or in decimal). Then click "Send".

In **Read mode**, the steps are the same except that the user must specify how many bytes have to be read. Data to write is optional (only used for ReadAfterWrite I2C method).

7 Registers management

Memory Organization

The user must know that a new register value sent through the communication port is loaded to the running parameters in RAM and used for the current process. All these parameters are lost upon power-down. It is required to save them to "User Parameters" or "Factory Parameters" with the corresponding function.



Action Number and description:

- ① **SaveUserParameters** (0x03) function
- ② During standard power-up or calling **RestoreUserParameters** (0x04) function
- ③ **RestoreFactoryParameters** (0x05) function
- ④ + ① **SaveFactoryParameters** (0x06) function
[For integrators engineers only]
- ⑤ By setting "SOS Jumper" after power-up
- ③ + ⑤ + ① By setting "SOS Jumper" during power-up

Full Register Description

List of registers

<u>Address</u>	<u>Bytes</u>	<u>Name</u>
General Information		
0x00 (00)	4	TYPE
0x01 (01)	4	VERSION
0x02 (02)	0 (fct)	RESETCPU
0x03 (03)	0 (fct)	SAVEUSERPARAMETERS
0x04 (04)	0 (fct)	RESTOREUSERPARAMETERS
0x05 (05)	0 (fct)	RESTOREFACTORYPARAMETERS
0x06 (06)	0 (fct)	SAVEFACTORYPARAMETERS
0x07 (07)	4	VOLTAGE
0x08 (08)	4	WARNINGS
Communication		
0x10 (16)	4	COMOPTIONS
0x11 (17)	6	ETHERNETMAC
0x12 (18)	4	IPADDRESS
0x13 (19)	4	SUBNETMASK
0x14 (20)	1	TCP TIMEOUT
0x15 (21)	16	MODULENAME
0x16 (22)	1	RS232CONFIG
0x18 (24)	1	I2CSPD
0x1A (26)	1	TCP CONNECTIONS OPENED
I/Os and AD		
0x20 (32)	4	ANALOG INPUTS THRESHOLD
0x21 (33)	2	OUTPUTS
0x23 (35)	2	INPUTS
Analog voltage at inputs		
0x30 (48)	4	INPUTVOLTAGE0VALUE
0x31 (49)	4	INPUTVOLTAGE1VALUE
0x32 (50)	4	INPUTVOLTAGE2VALUE
0x33 (51)	4	INPUTVOLTAGE3VALUE
0x34 (52)	4	INPUTVOLTAGE4VALUE
0x35 (53)	4	INPUTVOLTAGE5VALUE
0x36 (54)	4	INPUTVOLTAGE6VALUE
0x37 (55)	4	INPUTVOLTAGE7VALUE
0x38 (56)	4	INPUTVOLTAGE8VALUE
0x39 (57)	4	INPUTVOLTAGE9VALUE
0x3A (58)	4	INPUTVOLTAGE10VALUE
0x3B (59)	4	INPUTVOLTAGE11VALUE
0x3C (60)	4	INPUTVOLTAGE12VALUE
0x3D (61)	4	INPUTVOLTAGE13VALUE
0x3E (62)	4	INPUTVOLTAGE14VALUE
0x3F (63)	4	INPUTVOLTAGE15VALUE

TYPE

Register Address	Register Name	Function	Read/Write Control
0x00	TYPE	Product ID	Read only

Register Size	Register structure	
4 Bytes	Unsigned Int 16bits (HH-HL) TYPE	Unsigned Int 16bits (LH-LL) MODEL

Description:

Product identifier composed with a *Type* and *Model* number.

It defines which kind of peripheral it is.

Normally different modules *TYPE* are not software compatible.

Example:

TYPE = 0x00080000 means *Type*=8 (FMod-TCP BOX), *Model* = 0

VERSION

Register Address	Register Name	Function	Read/Write Control
0x01	VERSION	Software ID	Read only

Register Size	Register structure	
4 Bytes	Unsigned Int 16bits (HH-HL) <i>Version</i>	Unsigned Int 16bits (LH-LL) <i>Revision</i>

Description:

Firmware identifier composed with a *Version* and *Revision* number.
Same *Version* with different *Revision* is backward compatible.

Example:

Firmware 0x0001000A = *Version* 1, *Revision* 10 is compatible with all earlier revisions of the same version (ver 1.0 to 1.9). However, it has new functionalities (which are deactivated by default) or code optimizations.

RESET CPU

Function Address	Function Name	Function	Read/Write Control
0x02	RESETCPU	Restart processor	Write only

Register Size	Register structure	Unit
0 Byte	none	none

Description:

Reboots the device. The communication will be lost.

SAVE USER PARAMETERS

Function Address	Function Name	Function	Read/Write Control
0x03	SAVEUSERPARAMETERS	Saves all in EEPROM	Write only

Register Size	Register structure	Unit
0 Byte	none	none

Description:

Saves the following parameters to user EEPROM space:

- 0x12 *IPADDRESS*
- 0x13 *SUBNETMASK*
- 0x14 *TCPTIMEOUT*
- 0x15 *MODULENAME*
- 0x16 *RS232CONFIG*

RESTORE USER PARAMETERS

Function Address	Function Name	Function	Read/Write Control
0x04	<i>RESTOREUSERPARAMETERS</i>	Restores saved values	Write only

Register Size	Register structure	Unit
0 Byte	none	none

Description:

Restores the following parameters from user EEPROM space:

- 0x12 *IPADDRESS*
- 0x13 *SUBNETMASK*
- 0x14 *TCPTIMEOUT*
- 0x15 *MODULENAME*
- 0x16 *RS232CONFIG*

RESTORE FACTORY PARAMETERS

<u>Function Address</u>	<u>Function Name</u>	<u>Function</u>	<u>Read/Write Control</u>
0x05	<i>RESTOREFACTORYPARAMETERS</i>	Factory default	Write only

<u>Register Size</u>	<u>Register structure</u>	<u>Unit</u>
0 Byte	none	none

Description:

Restores the following parameters from factory EEPROM space:

- 0x12 *IPADDRESS*
- 0x13 *SUBNETMASK*
- 0x14 *TCPTIMEOUT*
- 0x15 *MODULENAME*
- 0x16 *RS232CONFIG*

Note:

SAVEUSERPARAMETERS should be performed after this function in order to save restored parameters as user parameters.

SAVE FACTORY PARAMETERS

Function Address	Function Name	Function	Read/Write Control
0x06	SAVEFACTORYPARAMETERS	Save factory default	Write only

Register Size	Register structure	Unit
0 Byte	none	none

Description:

Saves the following parameters to factory EEPROM space:

- 0x12 *IPADDRESS*
- 0x13 *SUBNETMASK*
- 0x14 *TCPTIMEOUT*
- 0x15 *MODULENAME*
- 0x16 *RS232CONFIG*

Note:

This feature should only be used by a system integrator that would change the initial factory default settings.

VOLTAGE

Register Address	Register Name	Function	Read/Write Control
0x07	VOLTAGE	Power input voltage	Read only

Register Size	Register structure	Unit
4 Bytes	Signed (2's cplt) Int 16 (HH-HL) + 16 bits fixed point (LH-LL)	Volt

Description:

Input Voltage

Limits:

Max 0x7FFFFFFF_{xx} = 32'767.996

Min 0x000000_{xx} = 0.0

Step 0x000001_{xx} = 0.004

Example:

When read 0x00234567 = 2311527 , Voltage = 35.27 (2311527/655636)

Information:

Over 32 V (0x00200000) the overvoltage warning bit is set and the overvoltage protection diode should increase power current.

Below 12 V (0x000C0000) the undervoltage warning bit is set.

Below effective 6.5 V (0x00068000), this value has no meaning.

Active:

Each time the processor is running.

WARNING

Register Address	Register Name	Function	Read/Write Control
0x08	WARNING	Bit to bit state	R/W

Register Size	Register structure	Unit
4 Byte	Unsigned Int 32 bits , each bit independent	none

Description:

Each information/warning/error is contained in 2 bits: the first one (from LSB to MSB) shows the actual state, the next one shows if this state appeared previously.

Only the bits that show the past states can be cleared by writing 0x00000000 to *WARNING* register.

Bits	when set
0-1	Over-temperature occurred on outputs stage.
2-3	Over-current occurred on outputs stage.
4-5	Under-voltage of the power input.
6-7	Over-voltage of the power input.

Other bits are reserved.

If any warning bit is set, the LED on the SOS button will become red.

Default value: bits 31 -> 0

0x00000000

Active:

Each time the processor is running.

COM OPTIONS

<u>Register Address</u>	<u>Register Name</u>	<u>Function</u>	<u>Read/Write Control</u>
0x10	COMOPTIONS	Communication options	Read/Write

<u>Register Size</u>	<u>Register structure</u>	<u>Unit</u>
4 Bytes	32 individual bits	none

Description:

This register is reserved for future use.

ETHERNET MAC

Register Address	Register Name	Function	Read/Write Control
0x11	<i>ETHERNETMAC</i>	Hardware network ID	Read only

Register Size	Register structure	Unit
6 Bytes	6 x Unsigned Bytes	none

Description:

A standard hardware unique identifier (worldwide) for each device on an Ethernet network.

Note:

If the user writes into this register, the MAC address will not be modified. This register is available only for informational purposes.

IP ADDRESS

Register Address	Register Name	Function	Read/Write Control
0x12	IPADDRESS	IP network ID	Read/Write

Register Size	Register structure	Unit
4 Bytes	4 x Unsigned Bytes	none

Description:

Network identifier used for TCP/IP and UDP/IP.
The values 255 (0xFF) and 0 (0x00) are reserved for broadcast and network addresses and should not be used in this register.

Notes:

The module will change for a new IP address only when all of its communications ports are closed.
Do not forget to use a *SAVEUSERPARAMETERS* command.

Default value:

169.254.5.5

Example:

For the IP=192.168.16.14 (0xC0, 0xA8, 0x10, 0x0E), write 0xC0A8100E to IPADDRESS.

SUBNET MASK

Register Address	Register Name	Function	Read/Write Control
0x13	SUBNETMASK	IP subnet mask	Read/Write

Register Size	Register structure	Unit
4 Bytes	4 x Unsigned Bytes	none

Description:

Network IP subnet mask used for TCP/IP and UDP/IP.

Notes:

The module will change for a new subnet mask only when all of its communications ports are closed.

Do not forget to use a *SAVEUSERPARAMETERS* command.

If you do not want to use subnets, use the following subnet mask when IP address byte 0 is:

>0 and <=127	:	255.0.0.0	(Class A addresses)
>127 and <=191	:	255.255.0.0	(Class B addresses)
>191 and <=223	:	255.255.255.0	(Class C addresses)

Default value:

255.255.0.0

Example:

For the IP=10.2.6.45 and subnet mask = 255.255.0.0:

IP address class = A → netID = 10, subNetID = 2 and hostID = 6.45

TCP TIMEOUT

Register Address	Register Name	Function	Read/Write Control
0x14	TCPTIMEOUT	Timeout for TCP connection	Read/Write

Register Size	Register structure	Unit
1 Byte	Unsigned Int 8 bits	sec

Description:

The TCP timeout is a value (in seconds) after which the user will be disconnected if the device has not been accessed in the meantime.

If the value is 0, the TCP timeout is deactivated. In this case however, if the client crashes during connection, the communication will never be closed on the module's side! Because a maximum of 4 communications are allowed at the same time on the module, one of them will be blocked. If the client crashes four times, all of the 4 communications will be blocked and the module will have to be reset!

The timeout for each TCP/IP connection is reloaded when there is traffic through the port.

Default value:

30

Limitations:

Max value: 255

MODULE NAME

Register Address	Register Name	Function	Read/Write Control
0x15	MODULENAME	Module's ASCII name	Read/Write

Register Size	Register structure	Unit
16 Bytes	16 (only) x Unsigned Bytes (CHAR)	none

Description:

Name and/or description of the module.

Example:

For the name "Hello Module"; extend to 16 byte the name: "Hello Module"+5x space=16 Byte.

So write 0x48656C6C 6F204D6F 64756C65 20202020.

RS232 CONFIG

Register Address	Register Name	Function	Read/Write Control
0x16	RS232CONFIG	RS232 baud rate and flow control configuration	Read/Write

Register Size	Register structure	Unit
1 Byte	Unsigned Int 8 bits	none

Description:

RS232 baud rate and flow control configuration.

Bits 0-2	Baud rate configuration : 0 : 4800 bds 1 : 9600 bps (default) 2 : 19200 bps 3 : 38400 bps 4 : 57600 bps 5 : 115200 bps 6 : 115200 bps 7 : 115200 bps
Bits 3-6	Reserved
Bit 7	Hardware flow control bit (0 = disabled, 1 = enabled)

Default value:

1 (9600 bps without flow control)

I2C SPeeD

Register Address	Register Name	Function	Read/Write Control
0x18	I2CSPD	I2C speed setting	Read/Write

Register Size	Register structure	Unit
1 Byte	Unsigned Int 8 bits	none

Description:

I2C speed setting between ~39kHz and 400kHz.

The value of this parameter must be computed with the following formula based on the wanted speed:

$$I2CSPD = \frac{10^7}{I2CSpeed_{wanted}} - 1$$

Note:

Speeds greater than 100kHz have some limitations (see page 17).
Do not use a speed greater than 400kHz (<24). Greater speed will not work.

Default value:

99 (100kHz)

Examples:

Most common speeds:

100kHz : I2CSPD = 99

400kHz : I2CSPD = 24

TCP CONNECTIONS OPENED

Register Address	Register Name	Function	Read/Write Control
0x1A	<i>TCPCONNECTIONSOPENED</i>	Number of TCP connections that are opened	Read only

Register Size	Register structure	Unit
1 Byte	Unsigned Int 8 bits	none

Description:

Number of users connected to the device using TCP.
Value can be 0 to 4.

ANALOG INPUTS THRESHOLD

Register Address	Register Name	Function	Read/Write Control
0x20	ANALOGINPUTSTHRESHOLD	AD converter threshold on inputs	Read/Write

Register Size	Register structure	Unit
4 Bytes	Signed (2's cplt) Int 16 (HH-HL) + 16 bits fixed point (LH-LL)	Volt

Description:

Defines the threshold used by the AD converter on inputs pins to define input state as low or high (0 or 1).

Default:

6.0 V

Example:

If your inputs use 5V TTL signals, set this value between 1 and 4 V.

INPUTS

Register Address	Register Name	Function	Read/Write Control
0x21	INPUTS	16 inputs states	Read only

Register Size	Register structure	Unit
2 Bytes	Unsigned Int 16 bits, each bit independent	none

Description:

Show digital state of each inputs pin. The state is defined by comparing actual input voltage with the ANALOG INPUTS THRESHOLD.

Bit 0	INPUT #1
Bit 1	INPUT #2
Bit 2	INPUT #3
Bit 3	INPUT #4
Bit 4	INPUT #5
Bit 5	INPUT #6
Bit 6	INPUT #7
Bit 7	INPUT #8
Bit 8	INPUT #9
Bit 9	INPUT #10
Bit 10	INPUT #11
Bit 11	INPUT #12
Bit 12	INPUT #13
Bit 13	INPUT #14
Bit 14	INPUT #15
Bit 15	INPUT #16

Example:

b'0000 0000 0000 0111' → Inputs number 1, 2 and 3 are high and others are low.

OUTPUTS

Register Address	Register Name	Function	Read/Write Control
0x23	OUTPUTS	Sets outputs states	Read/Write

Register Size	Register structure	Unit
2 Bytes	Unsigned Int 16 bits, each bit independent	none

Description:

Controls the state of each of the output pins.

Bit 0	OUTPUT#1 (Relay A)
Bit 1	OUTPUT#2 (Relay B)
Bit 2	OUTPUT#3
Bit 3	OUTPUT#4
Bit 4	OUTPUT#5
Bit 5	OUTPUT#6
Bit 6	OUTPUT#7
Bit 7	OUTPUT#8
Bit 8	OUTPUT#9
Bit 9	OUTPUT#10
Bit 10	OUTPUT#11
Bit 11	OUTPUT#12
Bit 12	OUTPUT#13
Bit 13	OUTPUT#14
Bit 14	OUTPUT#15
Bit 15	OUTPUT#16

Example:

b'0000 0000 0000 0111' → Outputs number 1, 2 and 3 are high and others are low.

INPUT VOLTAGE x VALUE

Registers Addresses	Register Name	Function	Read/Write Control
0x30 to 0x3F	INPUTVOLTAGExVALUE	Last INPUTVx A/D conversion result	Read only

Register Size	Register structure	Unit
4 Bytes	Signed (2's cplt) Int 16 (HH-HL) + 16 bits fixed point (LH-LL)	Volt

Description:

Voltage value of the 16 inputs pins between -12V and 12V. This value saturates at ~ -15.5V and 24V.

Notes:

The A/D converter has a 10 bits resolution (~0.43V).

The acquisition is done every 850μs and is asynchronous with the read access of the A/D VALUE registers. When you access this register, you get the last A/D conversion result, which can be up to 850μs old.

Contact address :

FiveCo - Innovative Engineering
PSE-C
CH-1015 Lausanne
Switzerland
Tel: +41 21 693 86 71
Fax: +41 21 693 86 70

www.fiveco.ch
info@fiveco.ch



Free Manuals Download Website

<http://myh66.com>

<http://usermanuals.us>

<http://www.somanuals.com>

<http://www.4manuals.cc>

<http://www.manual-lib.com>

<http://www.404manual.com>

<http://www.luxmanual.com>

<http://aubethermostatmanual.com>

Golf course search by state

<http://golfingnear.com>

Email search by domain

<http://emailbydomain.com>

Auto manuals search

<http://auto.somanuals.com>

TV manuals search

<http://tv.somanuals.com>