

# Mini DVD player

PET100

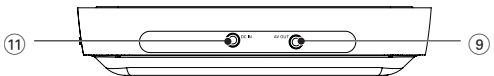
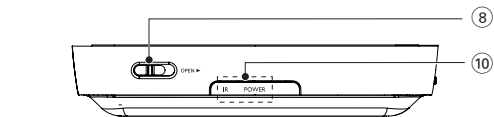
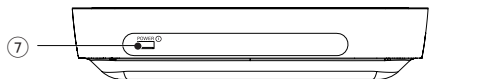
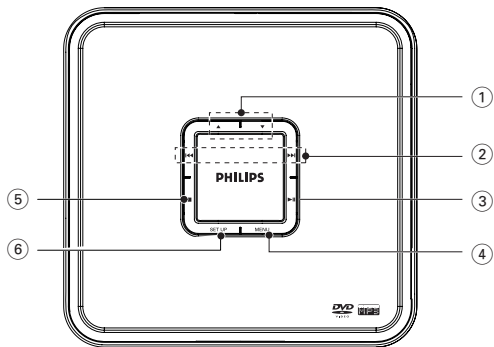
Register your product and get support at  
[www.philips.com/welcome](http://www.philips.com/welcome)

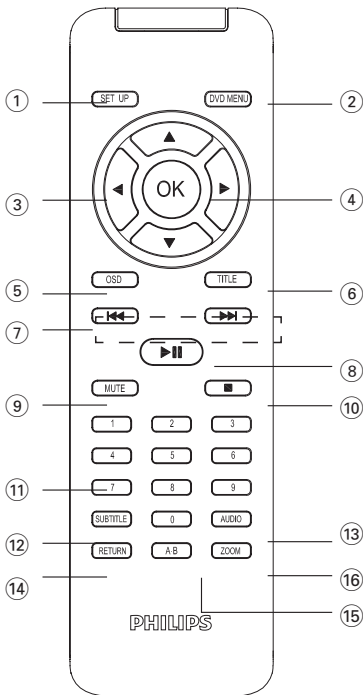
## User Manual



# PHILIPS

1





# English

**Congratulations on your purchase and welcome to Philips!**

**To fully benefit from the support that Philips offers, register your product at [www.philips.com/welcome](http://www.philips.com/welcome).**

## **Contents**

- |          |                                 |          |                               |
|----------|---------------------------------|----------|-------------------------------|
| <b>1</b> | <b>Safety and maintenance</b>   | <b>5</b> | <b>Adjust system setup</b>    |
| <b>2</b> | <b>Your Portable DVD Player</b> | <b>6</b> | <b>Play discs</b>             |
| 2.1      | Unpacking                       | 6.1      | Play DVD disc                 |
| 2.2      | Placement                       | 6.2      | Playback VCD or Super (S) VCD |
| 2.3      | Playable disc formats           | 6.3      | Playback Audio CD or MP3-CD   |
| 2.3.1    | DVD-Video                       | 6.4      | Playback Picture-CD           |
| 2.3.2    | Video CD                        | <b>7</b> | <b>Troubleshooting</b>        |
| 2.3.3    | Audio CD / Mp3                  | <b>8</b> | <b>Technology Information</b> |
| 2.3.4    | Picture CD                      |          |                               |
| <b>3</b> | <b>Overview</b>                 |          |                               |
| 3.1      | Main unit controls              |          |                               |
| 3.2      | Remote Control                  |          |                               |
| <b>4</b> | <b>Preparation</b>              |          |                               |
| 4.1      | Connect AC adaptor              |          |                               |
| 4.2      | Connect to TV                   |          |                               |
| 4.3      | Power up the remote control     |          |                               |

# 1 Safety and maintenance

- Do not disassemble the unit for laser rays are dangerous to eyes. Any service should be done by qualified service personnel.
- Unplug the AC adaptor to cut the power if liquid or objects get inside the unit.
- Take care not to drop the unit or subject it to strong shocks, which may cause malfunction.
- Do not expose to excessive heat caused by heating equipment or direct sunlight.
- This product is not waterproof: do not allow your player to be submersed in water. Water entering the player may cause major damage.
- Do not turn up the volume so high that you can't hear what's around you.
- You should use caution or temporarily discontinue use in potentially hazardous situations.
- Do not use headphones while operating a motorized vehicle, cycling, skateboarding, etc.; it may create a traffic hazard and is illegal in many areas.
- Important (for models with by-packed headphones): Philips guarantees compliance with the maximum sound power of its audio players as determined by relevant regulatory bodies only with the original model of provided headphones. In case this one needs replacement, we recommend that you contact your retailer to order a model identical to that of the original provided by Philips.
- Traffic safety: do not use while driving or cycling as you may cause an accident.
- When the player is in use for a long period of time, the surface will be heated. This is normal.

## Handling discs

- Do not attach paper or tape to the disc.
- Keep the disc away from direct sunlight or heat sources.
- Store the disc in a disc case after playback.
- To clean, wipe the disc outwards from the center with a soft, lint-free clean cloth.
- Do not use any cleaning agents containing alcohol, ammonia, benzene, or abrasives as these may harm the player.
- Apparatus shall not be exposed to dripping or splashing. Do not place any sources of danger on the apparatus (e.g. liquid filled objects , lighted candles)
- Do not touch the lens!

## This player includes this label



The type plate is located on the bottom of the set

## Copyright information

The making of unauthorized copies of copy-protected material, including computer programmes, files, broadcasts and sound recordings, may be an infringement of copyrights and constitute a criminal offence. This equipment should not be used for such purposes.

## Disposal of your old product



Your product is designed and manufactured with high quality materials and components, which can be recycled and reused.

When this crossed-out wheeled bin symbol is attached to a product, it means the product is covered by the European Directive 2002/96/EC.

Please be informed about the local separate collection system for electrical and electronic products.

Please act according to your local rules and do not dispose of your old product with your normal household waste. The correct disposal of your old product will help prevent potential negative consequences to the environment and human health.

## 2 Your Portable DVD Player

Your portable DVD player plays digital video discs conforming to the universal DVD Video standard. With it, you will be able to enjoy full-length movies with true cinema picture quality, and stereo or multichannel sound (depending on the disc and on your playback set-up). The unique features of DVD-Video, such as selection of soundtrack and subtitle languages, and of different camera angles (again depending on the disc), are all included.

### 2.1 Unpacking

First check and identify the contents of your package, as listed below:

- Mini DVD player
- Remote Control (AY5513)
- User manual
- Scart AV cable
- AC power adaptor(12V,AY4195)

### 2.2 Placement

- Place the player on a firm, flat surface.
- Keep away from domestic heating equipment and direct sunlight.
- If the player cannot read CDs/DVDs correctly, try using a commonly available cleaning CD/DVD to clean the lens before taking the player to be repaired. Other cleaning methods may destroy the lens.
- Always keep the disc door closed to avoid dust on the lens.
- The lens may cloud over when the player is suddenly moved from cold to warm surroundings. It is then not possible to play a CD/ DVD. Leave the player in a warm environment until the moisture evaporates.

## 2.3 Playable disc formats

In addition to DVD-Video disc, you will also be able to play all Video CDs, CDs, CDR, CDRW, DVD±R and DVR±RW.

### 2.3.1 DVD-Video

Depending on the material on the disc (a movie, video clips, a drama series, etc.) these discs may have one or more Titles, and each Title may have one or more Chapters. To make access easy and convenient, your player lets you move between Titles, and also between Chapters.

### 2.3.2 Video CD

Depending on the material on the disc (a movie, video clips, a drama series, etc.) these discs may have one or more Tracks, and tracks may have one or more indexes, convenient, your player lets you move between tracks and between indexes.

### 2.3.3 Audio CD / MP3

Audio CDs /Mp3 contain music tracks only .You can play them in the conventional way through a stereo system using the keys on the remote control and/or main unit, or via the TV using the On Screen Display (OSD). Music bought from on-line music stores are not supported because they are secured by Digital Rights Management protection (DRM).

### 2.3.4 Picture CD

This device only supports picture file with the extension of .jpg.

## 3 Overview

### 3.1 Main unit controls (see figure 1)

- |        |   |
|--------|---|
| ① ▲, ▼ | Up/down cursor                                |
| ② ◀, ▶ | Skip to previous/next chapter, track or title |
| ③ ▶    | Start playback or pause                       |
| ④ Menu | Enter disc content menu or exit               |
| ⑤ ■    | Stop playback                                 |



⑥ <b>Setup</b>	Enter system setup menu or exit
⑦ <b>Power</b>	Turn the power on or off
⑧ <b>Open</b>	Open the disc door to insert or remove disc
⑨ <b>AV out</b>	Audio/Video output
⑩ <b>IR power</b>	Power and remote sensor indicator
⑪ <b>Dc in</b>	Power supply socket

## 3.2 Remote Control (see figure 2)

① <b>SET UP</b>	Enter the system setup menu or exit
② <b>DVD MENU</b>	Return to the DVD menu
③ <b>Navigation key</b>	Up/down/left/right
④ <b>OK</b>	Confirm a selection
⑤ <b>OSD</b>	View the playback status
⑥ <b>TITLE</b>	Return to the Title menu of DVD disc
⑦ <b>⏮</b>	Skip to previous chapter track
<b>⏭</b>	Skip to next chapter track
⑧ <b>▶  </b>	Start playback or pause
⑨ <b>MUTE</b>	Cut sound out
⑩ <b>■</b>	Stop playback
⑪ <b>Number Keypad (0-9)</b>	Input the password or select the track
⑫ <b>SUBTITLE</b>	Select subtitle language for DVD disc
⑬ <b>AUDIO</b>	Select audio language for DVD disc
⑭ <b>RETURN</b>	Return to PBC menu for VCD disc
⑮ <b>A-B</b>	Repeat playback
⑯ <b>ZOOM</b>	Zoom in or out picture

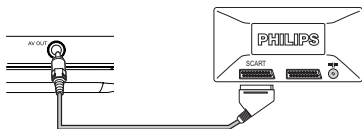
## 4 Preparation

### 4.1 Connect AC adaptor

Connect the supplied adaptor to the set and to a AC power outlet.

## 4.2 Connect to TV

To enjoy the DVD player, you need to connect it to a TV.



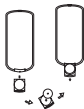
## 4.3 Power up the remote control

### *For first-time use:*

Remove the protective tab to activate the remote control battery.

### *To replace the remote control battery*

- 1 Open the battery compartment.
- 2 Insert one CR2025 3V lithium battery with correct polarity (+/-) as indicated.
- 3 Close the battery compartment.



## CAUTION

- Batteries contain chemical substances, so they should be disposed of properly.
- Batteries shall not be exposed to excessive heat such as sunshine, fire or the like.
- Danger of explosion if battery is incorrectly replaced. Replace only with the same or equivalent type.
- Incorrect use of batteries can cause electrolyte leakage and will corrode the compartment or cause the batteries to burst.
- Remove the batteries if the set is not to be used for a long time.
- Per-chlorate Material – special handling may apply.  
See [www.dtsc.ca.gov/hazardouswaste/perchlorate](http://www.dtsc.ca.gov/hazardouswaste/perchlorate).

## 5 Adjust system setup

1 Press **SETUP**.

- List of features is shown.

2 Use ◀▶ to highlight your selection.

3 Use ▲▼◀▶ to highlight your desired setting

The **SETUP** menu includes:

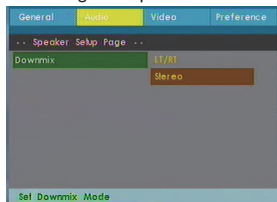
### General



- TV display:** Set screen display aspect ratio.
- OSD Lang:** Set On Screen Display (OSD) languages.
- PBC:** Set PBC (Playback control) menu on or off.
- Screen Saver:** Set screen saver on or off.

## Audio

Set the digital output format



- Dobly (Downmix):** LT/RT  
Stereo

## Video



- Sharpness:** Adjust color of the screen.
- Brightness:** Adjust brightness of the screen.
- Contrast:** Adjust contrast of the screen.

## Preference



- TV type:** Set video output format.
- Audio:** Set audio language
- Subtitle:** Set subtitle language
- Disc Menu:** Set disc menu language
- Parental:** Set parental options
- Password:** Change password (default: 9999)
- Default:** Restore factory settings

## 6 Play discs

### 6.1 Play DVD disc

- 1 Connect the DVD player to a **TV** .
- 2 Power on the DVD player and the TV.
- 3 Open the disc door and insert a DVD disc. The player will start to play the disc automatically.
- 4 Use **▲▼◀▶** to select an item from the DVD disc menu, such as play now, select languages and subtitle, then press **OK** to start play.

The following functions are available during playback:

---

**Pause** To pause playback, press **▶II**. You can resume playback by pressing **▶II** again

---

**Previous/Next** Briefly press **◀◀** or **▶▶** repeatedly to skip to previous or next chapter or track.

---

**Fast backward/** Keep pressing **◀◀** or **▶▶** to initiate fast backward/

<b>Fast forward</b>	forward searching. When 2x is shown on screen, press ◀◀ or ▶▶ briefly to change speed to 4x, 8x, 16x, 32x or to resume normal playback. You may also press ▶▶ to resume normal playback.
<b>Stop</b>	Press ■ to stop playback
<b>Subtitle</b>	To change subtitle language, press <b>SUBTITLE</b> .
<b>OSD</b>	Briefly press <b>OSD</b> to view the playback status
<b>Language</b>	You can change audio language by pressing <b>AUDIO</b> . Note: Some VCDs only contain 2 languages for selection.
<b>Zoom</b>	You can press <b>ZOOM</b> to zoom in the screen, and then use ▲▼◀▶ to pan the screen. This function is only available for playbacks DVD video and Jpeg file.
<b>A-B Repeat</b>	You can set loop repeat by: 1) press <b>A-B</b> to set the starting point; 2) press <b>A-B</b> again to set the ending point. Then, the player plays the loop repeatedly. Press <b>A-B</b> to cancel the loop playback. This function is only available for playbacks DVD,CD,MP3.

Note: Depends on different type of discs and different playback status, some functions may be disabled.

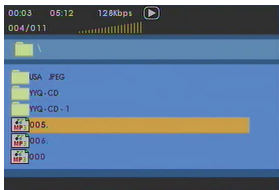
## 6.2 Playback VCD or Super (S)VCD

- 1 Connect the player to a TV
- 2 Power on the DVD player and the TV.
- 3 Open the disc door and insert a VCD disc. The player will start to play the disc automatically.
- 4 Refer to the table in chapter 6.1 for different playback options.

## 6.3 Playback Audio CD or MP3-CD

- 1 Connect the player to a TV
- 2 Power on the DVD player and the TV.

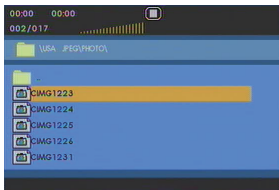
- 3 Open the disc door and insert an audio CD or MP3 CD disc.
  - The set will start to play the disc automatically.
- 4 Use ▲▼◀▶ to select folder/track to be played.
5. Refer to the table in chapter 6.1 for different playback options.



## 6.4 Playback Picture-CD

The player can only read pictures in JPEG format.

- 1 Connect the player to a TV
- 2 Power on the DVD player and the TV.
- 3 Open the disc door and insert a picture disc.
  - The set will start to play the disc automatically.
- 4 Use ▲▼◀▶ to select preferred folder and JPEG file to be played.
- 5 Refer to the table in chapter 6.1 for different playback options.



## 7 Troubleshooting

If you encounter problems when using this DVD player, check the following points before requesting for service. If the problem remains unsolved, go to the Philips web site ([www.Philips.com/support](http://www.Philips.com/support)), or contact Philips (see Contact information). When you contact Philips, ensure that your player is nearby and the model number and serial number are available.

To Keep the warranty valid, never try to repair the DVD player by yourself.

<b>Problem</b>	<b>Solution</b>
<b>No picture</b>	<ul style="list-style-type: none"><li>• Ensure the DVD player is correctly connected with the TV.</li></ul>
<b>Disc can't be played</b>	<ul style="list-style-type: none"><li>• Ensure label side of the disc is facing upward.</li><li>• Clean the disc. And check if the disc is defective by trying another disc.</li></ul>
<b>The player does not respond to the remote control</b>	<ul style="list-style-type: none"><li>• Aim the remote control directly at the sensor on the front of the player.</li><li>• Avoid all obstacles that may interfere with the signal path.</li><li>• Inspect or replace the battery.</li></ul>
<b>Distorted or B/W picture with DVD</b>	<ul style="list-style-type: none"><li>• Use only discs formatted according to the TV-set used (PAL/NTSC).</li></ul>
<b>Player feels warm When the player is in use for a long period of time, the surface will be heated.</b>	<ul style="list-style-type: none"><li>• This is normal.</li></ul>



<b>Problem</b>	<b>Solution</b>
<b>No power</b>	<ul style="list-style-type: none"> <li>• Check if both plugs of the mains cord are properly connected.</li> <li>• Check if there is power at the AC outlet by plugging in another appliance.</li> </ul>
<b>Distorted picture</b>	<ul style="list-style-type: none"> <li>• Check the disc for fingerprints and clean with a soft cloth, wiping from centre to edge.</li> <li>• Sometimes a small amount of picture distortion may appear. This is not a malfunction.</li> </ul>
<b>Completely distorted picture / no colour in</b>	<ul style="list-style-type: none"> <li>• The NTSC/PAL setting may be wrong. Match your TV's setting with the player's setting.</li> </ul>
<b>Disc can't be played</b>	<ul style="list-style-type: none"> <li>• Ensure the disc label is upwards and clean the disc.</li> <li>• Check if the disc is defective by trying another disc. the brightness in the SETUP menu</li> </ul>

## 8 Technology Information

Dimensions	157 mm x 32 mm x 151 mm
Weight	0.35 kg
Power supply	AC/DC adaptor Input: 100–240V~ 50–60 Hz Output: 12,0V <sub>DC</sub> 1,0A
Power Consumption	10 W
Operating temperature range	0 - 50°C (32 - 122°F)
Laser wavelength	650 nm
Video system	NTSC / PAL / AUTO

**PHILIPS reserves the right to make design and specification changes for product improvement without prior notice.**

**Modifications not authorized by the manufacturer may void users authority to operate this device.**

**All rights reserved.**

### **Copyright information**

The making of unauthorized copies of copy-protected material, including computer programmes, files, broadcasts and sound recordings, may be an infringement of copyrights and constitute a criminal offence. This equipment should not be used for such purposes.



Meet Philips at the Internet  
<http://www.philips.com>



PET100



Printed in China

WK813

## Free Manuals Download Website

<http://myh66.com>

<http://usermanuals.us>

<http://www.somanuals.com>

<http://www.4manuals.cc>

<http://www.manual-lib.com>

<http://www.404manual.com>

<http://www.luxmanual.com>

<http://aubethermostatmanual.com>

Golf course search by state

<http://golfingnear.com>

Email search by domain

<http://emailbydomain.com>

Auto manuals search

<http://auto.somanuals.com>

TV manuals search

<http://tv.somanuals.com>