

Portable DVD Player
User manual
Manuel d'utilisation
Benutzerhandbuch

English FUNCTIONAL OVERVIEW
Main unit controls (see figure 1)
OK, VOL, MUTE, REPEAT, AV IN, OPEN

Front panel remote sensor
IR REMOTE, CHGPOWER

GENERAL INFORMATION
Power Sources
Safety and maintenance

PREPARATIONS
Digital Audio Out
TIP
Remote control operation
Menu navigation

GENERAL FEATURES
Moving to another title / track / chapter
Still picture and step frame
Search
SETUP OPERATIONS

Important notes for users in the UK (for OS version only)
Maine plug is fitted with an approved 13 Amp plug. To change a fuse in this type of plug proceed as follows:
1. Remove fuse cover and fuse.
2. Fix new fuse which should be a BS1362 5 Amp, A.S.T.A. or BS1 approved type.
3. Refit the fuse cover.

FUNCTIONAL OVERVIEW
Left of player (see figure 1)
ON POWER OFF, Right of player (see figure 1)
VOLUME, PHONE 1 & 2, AVOUT, AVIN, COAXIAL, DC IN 5V, Front panel remote sensor, IR REMOTE, CHGPOWER

CAUTION
Use of controls or adjustments or performance of procedures other than herein may result in hazardous radiation exposure or other unsafe operation.

GENERAL INFORMATION
Handling discs
On handling the LCD screen
Environmental information
Copyright information

PREPARATIONS
Using the AC / DC adapter
Using the car adapter
Powering your remote control

GENERAL EXPLANATION
About this manual
Remote control operation
Menu navigation

GENERAL FEATURES
Slow motion
Changing the audio output
ZOOM
MUTE
REPEAT

SETUP OPERATIONS
Audio Setup
Channel Equalizer Setup
PROCESSIONING
Preferences
General Setup

REMOTE CONTROL
Remote controls (see figure 2)
VOL, MUTE, REPEAT, RETURN, AUDIO ZOOM, A B, LANGUAGE, MENU, SETUP, INTA Red part, BATTERY COMPARTMENT

Placement
Keep away from domestic heating equipment and direct sunlight.
Always keep the disc door closed and avoid dust on the disc.
The lens may cloud over when the player is suddenly moved from cold to warm surroundings.

PREPARATIONS
Attaching and charging the battery pack
Using the AC / DC adapter
Using the car adapter
Powering your remote control

RECHARGEABLE BATTERIES
Rechargeable batteries have a limited number of charge cycles.

BASIC FUNCTIONS
Playing a DVD disc
Playing a MP3-CD
Playing a JPEG disc
Playing an audio or video CD disc

SPECIAL DVD FEATURES
Repeat A > B
Disc menu
Camera angle
Volume Control
Loading discs and switching on

TROUBLESHOOTING
Audio Setup
Channel Equalizer Setup
PROCESSIONING
Preferences
General Setup

INTRODUCTION
Playable disc formats
DVD-Video
DVD-Audio
Video CD
Audio CD / MP3 CD
CD with JPEG files

Face avant du lecteur (voir figure 1)
ON POWER OFF, REPEAT, RETURN, AUDIO ZOOM, A B, LANGUAGE, MENU, SETUP, INTA Red part, CHGPOWER

GENERALITES
Alimentation
Utiliser l'adaptateur
Utilisation de l'adaptateur allume-cigares
Télécommande

ATTENTION
L'activation de commandes ou réglages ou le non respect des procédures ci-inclues peuvent se traduire par une exposition dangereuse à l'irradiation.

PREPARATION
Sortie audio numérique
Présentation générale
Introduction
Télécommande
Navigation dans les menus

FONCTIONS GÉNÉRALES
Passage à un autre titre ou à une autre plage
Ralentir
Modification de la sortie audio
ZOOM
Recherche
Suppression du son
Répétition

OPÉRATIONS SETUP (CONFIGURATION)
Régler les touches de la télécommande
Régler les touches de la télécommande
Régler les touches de la télécommande

TÉLÉCOMMANDE
Télécommande (voir figure 2)
ON POWER OFF, REPEAT, RETURN, AUDIO ZOOM, A B, LANGUAGE, MENU, SETUP, INTA Red part, CHGPOWER

ATTENTION
L'activation de commandes ou réglages ou le non respect des procédures ci-inclues peuvent se traduire par une exposition dangereuse à l'irradiation.

PRÉPARATION
Alimentation
Utiliser l'adaptateur
Utilisation de l'adaptateur allume-cigares
Télécommande

ATTENTION
L'activation de commandes ou réglages ou le non respect des procédures ci-inclues peuvent se traduire par une exposition dangereuse à l'irradiation.

FONCTIONS DE BASE
Allumage pour le réglage de la langue de l'affichage à l'écran (OSD)
Après l'allumage, l'insertion d'un disque DVD-Video
Lecture d'un disque DVD-Video

FONCTIONS GÉNÉRALES
Répétition A > B
Modes de lecture
Augmentation / réduction du volume
Langue des sous-titres
Modification de la langue de doublage

GUIDE DE DÉPANNAGE
Symptôme
Le disque ne peut être lu
Le lecteur ne réagit pas à la télécommande

INTRODUCTION
Formats de disque acceptés
DVD-Video
DVD-Audio

Face avant du lecteur (voir figure 1)
ON POWER OFF, REPEAT, RETURN, AUDIO ZOOM, A B, LANGUAGE, MENU, SETUP, INTA Red part, CHGPOWER

PRÉPARATION
Branchement du boîtier de piles et mise en charge
Connexions
Connexion d'un équipement auxiliaire

AV OUT
AV IN

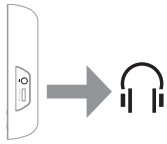
FONCTIONS DE BASE
Lecture de disque MP3-CD
Lecture de disque JPEG

OPÉRATIONS À L'ÉCRAN
Opérations à l'écran
Opérations à l'écran

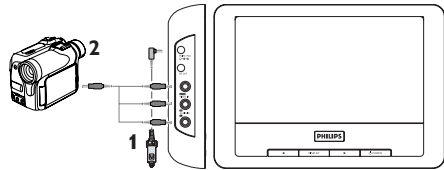
CARACTÉRISTIQUES TECHNIQUES
Dimensions
Poids
Alimentation
Logique de température de fonctionnement

3.3 Connect to headphone

Connect the headphones to the right side of the player for private listening.



3.4 Connect to camcorder



You can connect the player to your camcorder to view video on a bigger screen.

- 1 Connect PAC13X to the power source
- 2 Connect the camcorder to PAC13X using the audio/video cables

4 Enjoyment

You can adjust the volume and the brightness of the display screen during video playback.

4.1 Power on

- 1 Power on the connected device, such as the primary DVD player, camcorder etc.
- 2 Power on PAC13X
- 3 PAC13X will automatically playback the video content
- 4 Power off all the devices after viewing

4.2 Volume control

Adjust the volume control on the right side of the player.

4.3 Screen brightness and contrast

- 1 Press **DISPLAY** repeatedly to set brightness or contrast.
- 2 Press **◀** or **▶** key to adjust the settings.

5 Troubleshooting

If it appears that the DVD-Video player is faulty, first consult this checklist. It may be that something has been overlooked.

WARNING Under no circumstances should you try to repair the set yourself as this will invalidate the guarantee. If a fault occurs, first check the points listed, before taking the set for repair. If you are unable to solve a problem by following these hints, consult your dealer or service centre.

Symptom	Remedy
No sound	<ul style="list-style-type: none"> • Make sure that the system is properly connected. • Make sure the speakers are switched on. • Make sure the audio source is correct.
No sound	<ul style="list-style-type: none"> • Make sure that the LCD screen is switched on and is in the correct video mode. • Make sure that your system connection is properly connected. • Make sure the video source is correct.
No video	<ul style="list-style-type: none"> • Make sure all the connected devices are switched on. • Make sure that the system is properly connected. • Make sure that video playback has already started on the primary device, such as DVD player, camcorder. • Make sure that the video out function on the primary device has been activated.

6 Technical data

TFT screen size	7 inches
Weight	0.37 kg / 0.81 lb
Power supply	DC 9~12V 2A (AY4130)
Power Consumption	≤ 20W
Operating temperature range	0 - 50°C (32 - 122°F)
Video system	NTSC / PAL / AUTO

PHILIPS reserves the right to make design and specification changes for product improvement without prior notice. Modifications not authorized by the manufacturer may void users authority to operate this device. All rights reserved.

Second LCD screen

User manual

PAC130
PAC131



PHILIPS



**Be responsible
Respect copyrights**

Specifications are subject to change without notice.
Trademarks are the property of Koninklijke Philips Electronics N.V. or their respective owners
2006 © Koninklijke Philips Electronics N.V. All rights reserved.



Printed in China

wk6474

Copyright information

The making of unauthorized copies of copy-protected material, including computer programmes, files, broadcasts and sound recordings, may be an infringement of copyrights and constitute a criminal offence. This equipment should not be used for such purposes.

Disposal of your old product

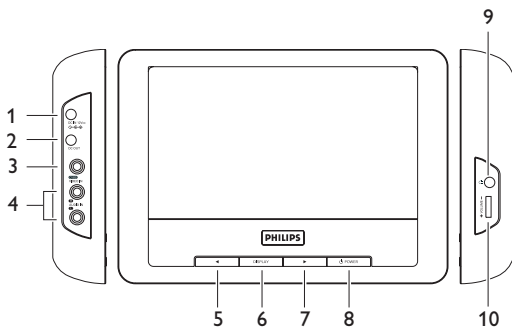
Your product is designed and manufactured with high quality materials and components, which can be recycled and reused.

When this crossed-out wheeled bin symbol is attached to a product, it means the product is covered by the European Directive 2002/96/EC.

Please be informed about the local separate collection system for electrical and electronic products.

Please act according to your local rules and do not dispose of your old product with your normal household waste. The correct disposal of your old product will help prevent potential negative consequences to the environment and human health.

1



English

Content

1 Control elements and functional components	3.3 Connect to headphone
1.1 Left side of the player	3.4 Connect to camcorder
1.2 Front of the player	4 Enjoyment
1.3 Right side of the player	4.1 Power on
2 General information	4.2 Volume control
3 Connection	4.3 Screen brightness and contrast
3.1 Use in a car	5 Troubleshooting
3.2 Use at home	6 Technical data

1 Control elements and functional components

1.1 Left side of the player (see figure 1)

- 1 DC IN** DC power input jack
- 2 DC OUT** DC power output jack
- 3 VIDEO IN** Video input
- 4 AUDIO IN** Audio input

1.2 Front of the player (see figure 1)

- 5,7** ◀ ▶ Left/right navigation keys
- 6 DISPLAY** Adjust the display settings of the system
- 8** ⏻ **POWER** Switch the player on / off

1.3 Right side of the player (see figure 1)

- 9** Headphone jack
- 10 + VOLUME** - Volume control

2 General information

Power Sources

- This unit operates on the supplied AC adaptor or car adaptor.
- Make sure that the input voltage of the AC adaptor is in line with the local voltage. Otherwise, the AC adaptor and unit may be damaged.
 - Do not touch the AC adaptor with wet hands to prevent electric shock.
 - When connecting with car power (cigarette lighter) adaptor, be sure the input voltage of the adaptor is identical with car voltage.
 - Unplug the AC adaptor from the outlet or remove the battery pack when the unit is not used for long periods of time.
 - Hold the plug to disconnect the AC adaptor. Do not pull the power cord.

Please always use supplied AC/DC adaptor (AY4130)

Safety and maintenance

- Do not disassemble the unit for laser rays are dangerous to eyes.
- Any service should be done by qualified service personnel.
- Unplug the AC adaptor to cut the power if liquid or objects get inside the unit.
- Take care not to drop the unit or subject it to strong shocks, which may cause malfunction.

Hearing Safety

Listen at a moderate volume.

- Using headphones at a high volume can impair your hearing. This product can produce sounds in decibel ranges that may cause hearing loss for a normal person, even for exposure less than a minute. The higher decibel ranges are offered for those that may have already experienced some hearing loss.
- Sound can be deceiving. Over time your hearing "comfort level" adapts to higher volumes of sound. So after prolonged listening, what sounds "normal" can actually be loud and harmful to your hearing. To guard against this, set your volume to a safe level before your hearing adapts and leave it there.



To establish a safe volume level:

- Set your volume control at a low setting.
- Slowly increase the sound until you can hear it comfortably and clearly, without distortion.

Listen for reasonable periods of time:

- Prolonged exposure to sound, even at normally "safe" levels, can also cause hearing loss.
- Be sure to use your equipment reasonably and take appropriate breaks.

Be sure to observe the following guidelines when using your headphones.

- Listen at reasonable volumes for reasonable periods of time.
- Be careful not to adjust the volume as your hearing adapts.
- Do not turn up the volume so high that you can't hear what's around you.
- You should use caution or temporarily discontinue use in potentially hazardous situations.
- Do not use headphones while operating a motorized vehicle, cycling, skateboarding, etc.; it may create a traffic hazard and is illegal in many areas.
- Important (for models with by-packed headphones): Philips guarantees compliance with the maximum sound power of its audio players as determined by relevant regulatory bodies only with the original model of provided headphones. In case this one needs replacement, we recommend that you contact your retailer to order a model identical to that of the original provided by Philips.
- Traffic safety: do not use while driving or cycling as you may cause an accident.
- Do not expose to excessive heat caused by heating equipment or direct sunlight.
- This product is not waterproof: do not allow your player to be submersed in water. Water entering the player may cause major damage.
- Do not use any cleaning agents containing alcohol, ammonia, benzene, or abrasives as these may harm the player.
- Apparatus shall not be exposed to dripping or splashing. Do not place any sources of danger on the apparatus (e.g. liquid filled objects, lighted candles)
- Do not touch the lens!

When the player is in use for a long period of time, the surface will be heated. This is normal.

On handling the LCD screen

The LCD is manufactured using high precision technology. You may, however, see tiny black points and/or bright points (red, blue, green) that continuously appear on the LCD. This is a normal result of the manufacturing process and does not indicate a malfunction.

Environmental information

We have reduced the packaging to its minimum and made it easy to separate into mono materials: cardboard, PS, PE and PET. Your set consists of material which can be recycled if disassembled by a specialized company. Please observe the local regulations to dispose of packaging, exhausted batteries and old equipment.

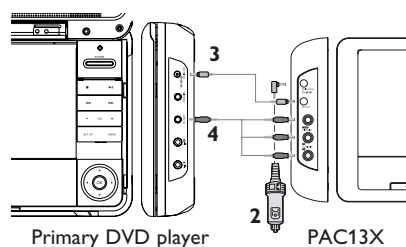
Copyright information

All other brand and product names are trademarks of their respective companies or organizations.

3 Connection

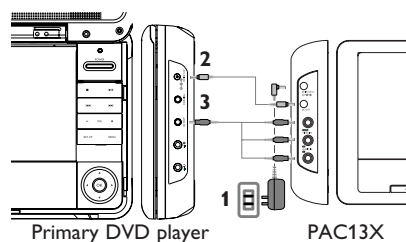
Make sure that the primary DVD player, secondary LCD screen and any other electrical equipment are switched off before connection.

3.1 Use in a car



- 1 Mount the devices to the headrest with the mounting kits
- 2 Connect the power plug of the car adaptor to PAC13X
- 3 Connect the power source to the primary DVD player using the power cord
- 4 Connect the audio/visual cables to the devices

3.2 Use at home



- 1 Connect the AC/DC power adaptor to PAC13X
- 2 Connect the power source to the primary DVD player using the power cord
- 3 Connect the audio/visual cables to the devices

Free Manuals Download Website

<http://myh66.com>

<http://usermanuals.us>

<http://www.somanuals.com>

<http://www.4manuals.cc>

<http://www.manual-lib.com>

<http://www.404manual.com>

<http://www.luxmanual.com>

<http://aubethermostatmanual.com>

Golf course search by state

<http://golfingnear.com>

Email search by domain

<http://emailbydomain.com>

Auto manuals search

<http://auto.somanuals.com>

TV manuals search

<http://tv.somanuals.com>