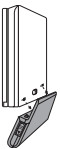
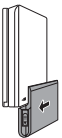


Quick start guide

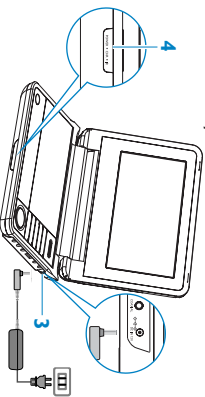
1 Charge



- 1 Switch OFF the set. Attach the battery pack as shown.



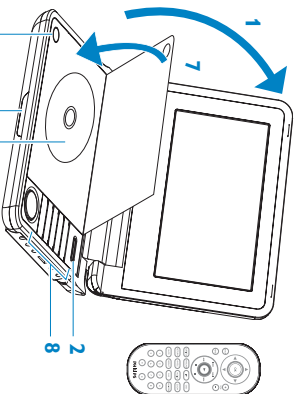
- 2 You can hear clear 'click' sound when it is successfully attached.



- 3 Connect the supplied adapter to the set and the AC outlet.
 - 4 RED light turns on.
- The battery pack will be fully charged in approximately 4 hours. When the RED light goes out, it means that the battery pack is fully charged.

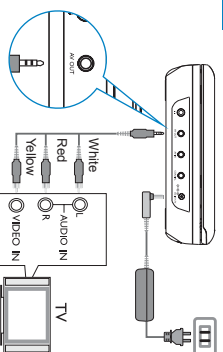
TIP Your battery will continue to charge while the player is in use. However, the RED light will be lit and it will take approximately 8 hours to fully charge the battery pack.

2 Enjoy

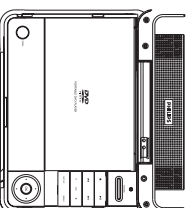


- 1 Open the lid.
- 2 Switch ON the set.
- 3 The GREEN light turns on.
- 4 Open the DVD door using the OPEN switch.
- 5 Remove protective card (if any).
- 6 Load the DVD disc.
- 7 Close the DVD door and the set will automatically start to playback.
- 8 Use control keys on the set or remote control.

3 Connect to TV



- 1 Connect the set to TV as shown.



- 2 Please select appropriate input or source on the TV. You can consult the owner's manual of your TV. (If your TV does not have Audio and Video inputs, you will need to purchase a RF modulator. Please consult your dealer.)

PHILIPS

Free Manuals Download Website

<http://myh66.com>

<http://usermanuals.us>

<http://www.somanuals.com>

<http://www.4manuals.cc>

<http://www.manual-lib.com>

<http://www.404manual.com>

<http://www.luxmanual.com>

<http://aubethermostatmanual.com>

Golf course search by state

<http://golfingnear.com>

Email search by domain

<http://emailbydomain.com>

Auto manuals search

<http://auto.somanuals.com>

TV manuals search

<http://tv.somanuals.com>