

# Always there to help you

Register your product and get support at  
[www.philips.com/welcome](http://www.philips.com/welcome)

SB2000



## User manual

# PHILIPS



# Contents

---

<b>1</b>	<b>Important</b>	<b>2</b>
----------	------------------	----------

---

<b>2</b>	<b>Your Portable Speaker</b>	<b>3</b>
	Introduction	3
	What's in the box	3

---

<b>3</b>	<b>Get started</b>	<b>4</b>
	Charge the built-in battery	4
	Power on/off	4

---

<b>4</b>	<b>Use Bluetooth devices</b>	<b>6</b>
	Connect a device	6
	Play audio via Bluetooth	7
	Make a call	7
	Clear the pairing history	7

---

<b>5</b>	<b>Listen to an external device</b>	<b>8</b>
----------	-------------------------------------	----------

---

<b>6</b>	<b>Adjust volume</b>	<b>9</b>
----------	----------------------	----------

---

<b>7</b>	<b>Product information</b>	<b>10</b>
	General information	10
	Bluetooth	10
	Amplifier	10

---

<b>8</b>	<b>Troubleshooting</b>	<b>11</b>
	General	11
	About Bluetooth device	11

---

<b>9</b>	<b>Notice</b>	<b>12</b>
	Compliance	12
	Care of the environment	12
	Trademark notice	12
	Copyright	13

# 1 Important

- Read these instructions.
- Heed all warnings.
- Follow all instructions.
- Do not place the product near any heat sources such as radiators, heat registers, stoves, or other devices (including amplifiers) that produce heat.
- Only use attachments/accessories specified by the manufacturer.
- Refer all servicing to qualified service personnel. Servicing is required when the product has been damaged in any way.
- Do not place any sources of danger on the product, for example, lighted candles.
- Keep the product away from direct sunlight, naked flames or heat.
- During charging the battery or listening to an external device through the USB cable, do not expose this product to any liquid.
- Make sure that the protective lid is tightly closed before exposing this product to any liquid.
- Never open the protective lid under humid circumstance or when the product is wet.
- After use under humid circumstance, immediately clean the product with a soft dry cloth and let it dry in a well-ventilated place away from direct sunlight.
- The battery shall not be exposed to excessive heat such as sunshine, fire or the like.
- Danger of explosion if battery is incorrectly replaced. Replace only with the same or equivalent type.

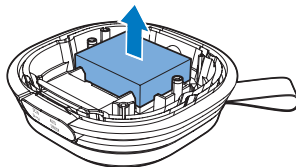
## Warning

- Never remove the casing of this apparatus.
- Never lubricate any part of this apparatus.
- Never place this apparatus on other electrical equipment.

## Caution

- Removal of the built-in battery invalidates the warranty and may destroy the product.

Always bring your product to a professional to remove the built-in battery.



## Note

- Rechargeable batteries have a limited number of charge cycles. Battery life and number of charge cycles vary by use and settings.

## Note

- The type plate is located on the bottom of the product.

## 2 Your Portable Speaker

Congratulations on your purchase, and welcome to Philips! To fully benefit from the support that Philips offers, register your product at [www.philips.com/welcome](http://www.philips.com/welcome).

---

### Introduction

With this speaker, you can

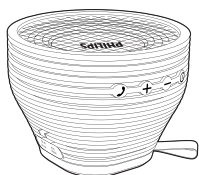
- listen to audio from an external device via Bluetooth connection,
- listen to audio from an external device through the micro USB socket, and
- make phone calls.

---

### What's in the box

Check and identify the contents of your package:

- Main unit
- USB cable
- Short user manual
- Safety sheet



# 3 Get started

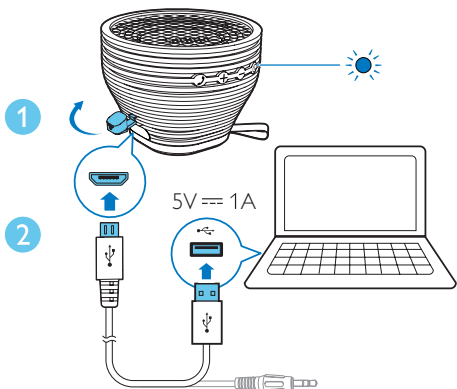
Always follow the instructions in this chapter in sequence.

## Charge the built-in battery

The speaker is powered by a built-in rechargeable battery.

### Note

- Before use, fully charge the built-in battery.



- 1 Open the protective lid.
- 2 Connect the USB cable between
  - the micro USB socket on the speaker;
  - and
  - a USB socket on your computer.

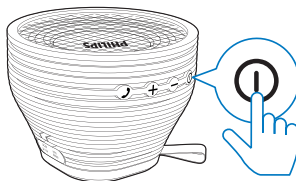
### Battery indicator

The LED indicator beside the **⓪** button indicates the battery status.

Indicator	Battery
Solid red	Under charging
Off	Fully charged

## Power on/off

Press **⓪** to power it on or off.

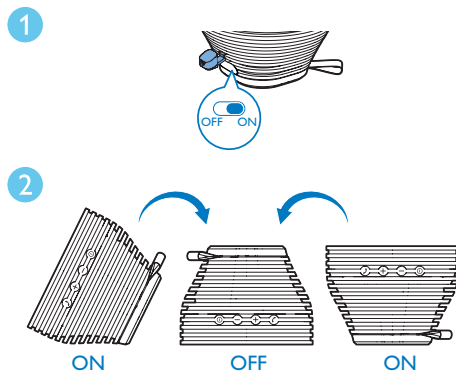


### Note

- If the USB cable is connected to the micro USB socket, this product does not automatically power off. To save battery power, disconnect the USB cable or manually power off the product after use.
- In Bluetooth mode, if there is no Bluetooth connection or no audio is streamed to this product within 15 minutes, this product automatically powers off.

## Use the auto sensor

An auto sensor is integrated in this product. You can adjust the direction of this product to power it off easily.



- 1 Switch the slider to **ON** to enable the auto sensor.

- 2 Put the speaker upside down.
- ↳ After 30 seconds, it powers off automatically.
  - To power it on again, press **⓪**.
  - To disable the auto sensor; switch the slider to **OFF**.

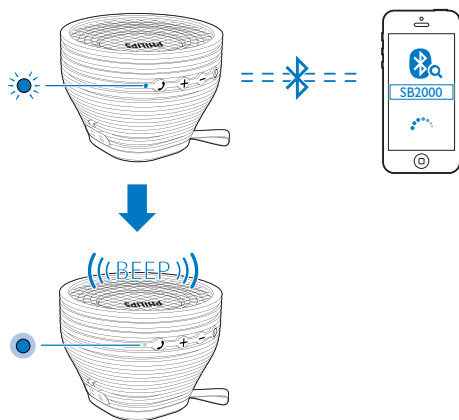
# 4 Use Bluetooth devices

With this speaker, you can listen to audio from a player and make a call through Bluetooth.

### Note


- WOOX Innovations does not guarantee the compatibility with all Bluetooth devices.
- Before pairing a device with this product, read its user manual for Bluetooth compatibility. Make sure that the connected Bluetooth device supports the Advanced Audio Distribution Profile (A2DP) and the Audio Video Remote Control Profile (AVRCP).
- The product can memorize a maximum of 4 paired devices.
- Make sure that Bluetooth function is enabled on your device, and your device is set as visible to all other Bluetooth devices.
- The operational range between this product and a Bluetooth device is approximately 10 meters (30 feet).
- Any obstacle between this product and a Bluetooth device can reduce the operational range.
- Keep away from any other electronic device that may cause interference.

## Connect a device



- 1 On your device, search for Bluetooth devices.
- 2 In the device list, select **SB2000**.
  - If a message prompts for the permission for Bluetooth connection with **SB2000**, confirm it.
  - If a password is required, enter **0000** and then confirm.↳ The speaker beeps when the Bluetooth connection is established.

### Bluetooth indicator

The LED indicator beside the  button indicates the status of Bluetooth connection.

Indicator	Bluetooth connection
Blinking blue	Connecting or waiting for connection
Solid blue	Connected

## Disconnect a device

On your device, disable the Bluetooth connection with this product.

### Note

- Before connecting another Bluetooth device, disconnect the current device first.

## Reconnect a device

- For a paired Bluetooth device on which the automatic reconnection is enabled, this product reconnects with it once it is detected.
- For a paired Bluetooth device that does not support the automatic reconnection, reconnect it with this product manually.



---

## Play audio via Bluetooth



### Note

- If the connected Bluetooth device supports the Advanced Audio Distribution Profile (A2DP), you can listen to tracks that are stored on the device through the system.
- If the device also supports the Audio Video Remote Control Profile (AVRCP), you can control play on this product.
- If the connected device does not support the AVRCP, control play on the connected device.
- If there is an incoming call on the connected mobile phone, music play pauses.

---

Buttons	Functions
---------	-----------

	Start, pause, or resume play.
--	-------------------------------

	Increase or decrease the speaker volume.
--	--

---

## Make a call

---

Buttons	Functions
---------	-----------

	Press to answer an incoming call.
--	-----------------------------------

	Press to end the current call.
--	--------------------------------

	Press and hold to reject an incoming call.
--	--

	Press twice to dial the last called number.
--	---

	Press twice to hold on the current call and answer another incoming call.
--	---

	Increase or decrease the speaker volume.
--	--

---

## Clear the pairing history

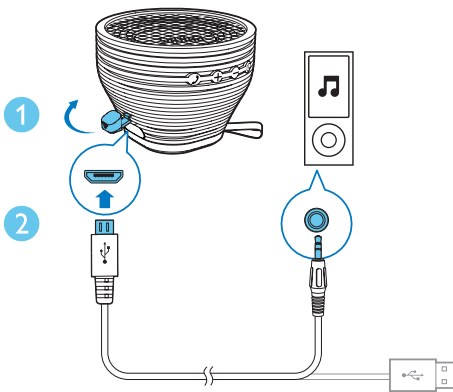
When the product is powered off, press and hold for 8 seconds.

# 5 Listen to an external device

You can also listen to an external audio device, for example, MP3 player, through this product.

## Note

- Make sure that no device is streaming audio to the speaker via Bluetooth.



- 1 Open the protective lid.
- 2 Connect the USB cable between
  - the micro USB socket on this product,
  - and
  - the headphone socket on the external device.
- 3 Play audio on the external device (refer to its user manual).

## 6 Adjust volume

Press **+** / **-**.

# 7 Product information

## Note

- Product information is subject to change without prior notice.

## General information

Power Supply (through USB socket)	5 V = 1 A
Built-in Battery	Lithium battery (500 mAh, 7.4V)
Dimensions - Main Unit (W x H x D)	123 X 92 X 123 mm
Weight - Main Unit	0.6 kg

## Bluetooth

Bluetooth specification	V3.0
Supported profiles	A2DP V1.0, AVRCP V1.0, HFP, and HSP
Range	10 m (Free space)

## Amplifier

Rated Output Power	5 W RMS
Signal to Noise Ratio	> 50 dBA
Audio input through micro USB socket	650 mV RMS, 22 kOhm

# 8 Troubleshooting



## Warning

- Never remove the casing of this product.

To keep the warranty valid, never try to repair the product yourself.

If you encounter problems when using this device, check the following points before requesting service. If the problem remains unsolved, go to the Philips Web page ([www.philips.com/support](http://www.philips.com/support)). When you contact the Consumer Care, make sure that the product is nearby and the model number and serial number are available.

---

## General

### No power

- Recharge your speaker.

### No sound

- Adjust volume on this product.
- Adjust volume on the connected device.
- Make sure that your Bluetooth device is within the effective operational range.

### No response from the speaker

- Restart the speaker.

---

## About Bluetooth device

### The audio quality is poor after connection with a Bluetooth-enabled device.

- The Bluetooth reception is poor. Move the device closer to this product or remove any obstacle between them.

### Cannot connect with the device.

- The Bluetooth function of the device is not enabled. Refer to the user manual of the device for how to enable the function.
- This product is already connected with another Bluetooth-enabled device. Disconnect that device and then try again.

### The paired device connects and disconnects constantly.

- The Bluetooth reception is poor. Move the device closer to this product or remove any obstacle between them.
- For some devices, Bluetooth connection may be deactivated automatically as a power-saving feature. This does not indicate any malfunction of this product.

# 9 Notice

Any changes or modifications made to this device that are not expressly approved by WOOX Innovations may void the user's authority to operate the equipment.

---

## Compliance

This product is designed to be waterproof in compliance with IEC 60529 IPX4.

# CE 0890

This product complies with the radio interference requirements of the European Community.

Hereby, WOOX Innovations declares that this product is in compliance with the essential requirements and other relevant provisions of Directive 1999/5/EC. You can find the Declaration of Conformity on [www.philips.com/support](http://www.philips.com/support).

---

## Care of the environment



Your product is designed and manufactured with high quality materials and components, which can be recycled and reused.



When this crossed-out wheeled bin symbol is attached to a product it means that the product is covered by the European Directive 2002/96/EC.

Please inform yourself about the local separate collection system for electrical and electronic products.

Please act according to your local rules and do not dispose of your old products with your normal household waste. Correct disposal of your old product helps to prevent potential negative consequences for the environment and human health.



Your product contains batteries covered by the European Directive 2006/66/EC, which cannot be disposed with normal household waste. Please inform yourself about the local rules on separate collection of batteries because correct disposal helps to prevent negative consequences for the environmental and human health.

### Environmental information

All unnecessary packaging has been omitted. We have tried to make the packaging easy to separate into three materials: cardboard (box), polystyrene foam (buffer) and polyethylene (bags, protective foam sheet.)

Your system consists of materials which can be recycled and reused if disassembled by a specialized company. Please observe the local regulations regarding the disposal of packaging materials, exhausted batteries and old equipment.

---

## Trademark notice

The Bluetooth® word mark and logos are registered trademarks owned by Bluetooth SIG, Inc. and any use of such marks by WOOX Innovations is under license.

---

## Copyright

2014 © WOOX Innovations Limited. All rights reserved.

Philips and the Philips' Shield Emblem are registered trademarks of Koninklijke Philips N.V. and are used by WOOX Innovations Limited under license from Koninklijke Philips N.V.'

Specifications are subject to change without notice. WOOX reserves the right to change products at any time without being obliged to adjust earlier supplies accordingly.



Specifications are subject to change without notice

2014 © WOOX Innovations Limited. All rights reserved.

This product was brought to the market by WOOX Innovations Limited or one of its affiliates, further referred to in this document as WOOX Innovations, and is the manufacturer of the product. WOOX Innovations is the warrantor in relation to the product with which this booklet was packaged. Philips and the Philips Shield Emblem are registered trademarks of Koninklijke Philips N.V.

SB2000\_00\_UM\_V2.0





## Free Manuals Download Website

<http://myh66.com>

<http://usermanuals.us>

<http://www.somanuals.com>

<http://www.4manuals.cc>

<http://www.manual-lib.com>

<http://www.404manual.com>

<http://www.luxmanual.com>

<http://aubethermostatmanual.com>

Golf course search by state

<http://golfingnear.com>

Email search by domain

<http://emailbydomain.com>

Auto manuals search

<http://auto.somanuals.com>

TV manuals search

<http://tv.somanuals.com>