

If you are requested by the manufacturer to return the item for repair please complete the enclosed section and send it together with your product and your receipt (proof of purchase) to the service address shown below.

Name: _____

Address: _____

Contact Telephone No.: _____

E-mail: _____

Location of purchase: _____

Fault Description: _____

_____

In order to deal with your enquiry as quickly and efficiently as possible, we ask you to send your enquiry by email (technical@omegawolf.co.uk). Do not forget to include your name, address and a daytime telephone number.

Alternatively, you can contact our freephone service hot-line on the number given below.

Office hours are as follows:

Mon - Fri: 8 am - 6 pm, Sat: 10 am - 2 pm, Sun: 10 am - 4 pm

**UK / NORTHERN IRELAND HELPLINE:
0870 7323023**

**REPUBLIC OF IRELAND HELPLINE:
1800 481005**

**WEB SUPPORT:
www.omegawolf.com/powercraft**

Omega, Interex House, Prospect Close, Lowmoor Business Park
NG17 7LF Kirkby In Ashfield, England

Replacements or repairs under guarantee regulations are free of charge.

User Guide & Warranty

ROUTER TABLE



After Sales Support

Now you have purchased a Power Craft product you can rest assured in the knowledge that as well as your 3 year parts and labour warranty you have the added peace of mind of dedicated helplines and web support.

AFTER SALES SUPPORT

UK / N.IRELAND HELPLINE NO 0870 7323023
REP. IRELAND HELPLINE NO 1800 481005
WEB SUPPORT www.omegawolf.com/powercraft
MODEL NUMBER: PRT-150

Contents

- 03 Introduction
- 04 Machine specifications
- 07 Safety instructions
 - General safety instructions
 - Additional safety instructions
- 13 Assembly
 - Assembling the router table
 - Mounting the router
- 19 Operation
- 21 Maintenance
- 22 Exploded view
- 23 Warranty

Warranty

EC DECLARATION OF CONFORMITY



We Ferm B.V.
Lingenstraat 6, 8028 PM Zwolle, The Netherlands
declare that the design and construction of the following machine, in the form supplied by us, comply with the requirements of the appropriate EC directives.
Product Description: **ROUTER TABLE**
Model: **PRT-150**
Appropriate EC directives: **98/37/EC, 73/23/EC**
Applicable harmonised norms: **EN 61029-1**

J.A. Bakker - van Ingen
CEO Ferm B.V.

J. Lodewijk
Quality Manager Ferm Global

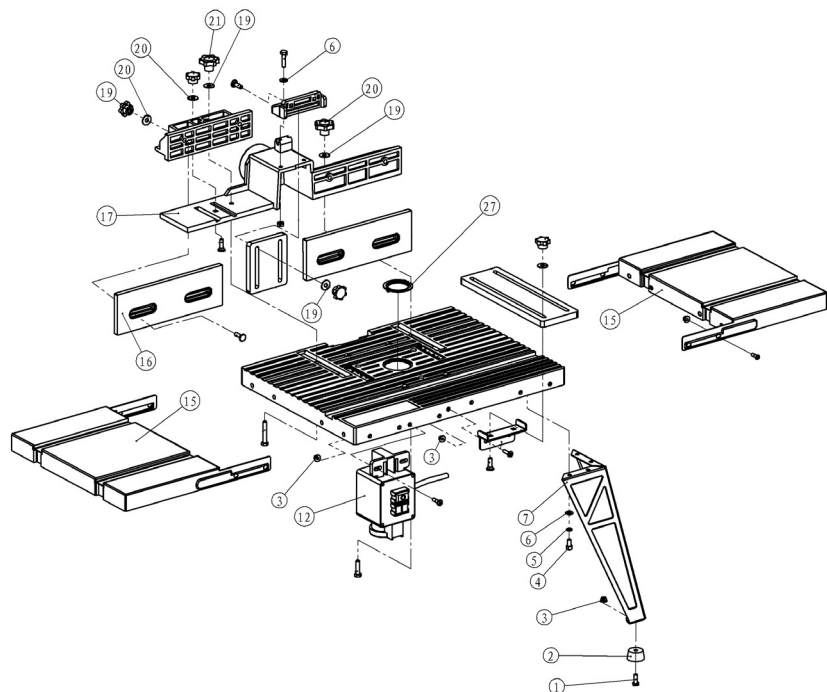
10/2007

WARRANTY CERTIFICATE



Year of manufacture: 00/2007 ROUTER TABLE PRT-150
Congratulations! You have made an excellent choice with the purchase of this Quality product. Our commitment to quality also includes our service. Should you, contrary to expectations, experience defects due to material or manufacturing faults during private use within 36 months of the date of purchase we shall be liable for warranty in accordance with statutory warranty regulations, provided that: - The device was not put to any use other than the intended.- Was not overloaded. - Was not used with the wrong accessories. - Repairs were not carried out by any other than the authorised workshop. The warranty certificate is only valid in connection with the receipt. Please keep both in a safe place. The warranty does not affect your statutory rights.
The product is guaranteed for a period of three years beginning on the day of purchase. Keep your purchase receipt safe as proof of the date of purchase. The guarantee period can only be extended for the duration of any repair required.
During the warranty period, defective devices can be sent **FREIGHT PREPAID** to the service address stated at the end of this booklet. We will, at our discretion either repair or exchange the device in accordance with warranty legislation.
Please include the following when sending in your product for repair:
1. The receipt (proof of purchase)
2. This warranty certificate with your name, address, contact details and a fault description completed overleaf.
If the original receipt is not enclosed the repair will be charged for in all cases. After the warranty has expired you can still send defective devices for repairs **FREIGHT PREPAID** to the address at the end of this booklet. Quotes as well as repairs after warranty period are to be paid for in all cases. Ensure the product is sent well packed as no responsibility can be accepted for items lost or damaged in transit. This warranty does not affect your statutory rights.

Exploded view



Parts list

No.	Description	Position
400750	Leg complete	1 till 7
400751	Switch	12
400758	Table extension	15
400752	Guideset	16, 25
400753	Holder for guide	17
400754	Knob small	19
400755	Flat washer	20
400756	Knob big	21
400757	Inlay (5 pcs.)	27

Introduction

Congratulations on choosing to buy a PowerCraft product.

By doing so you now have the assurance and peace of mind that comes with purchasing a product made by one of Europe's leading manufacturers.

All products brought to you by PowerCraft are manufactured to the highest standards of performances and safety, and, as part of our philosophy for customer service and satisfaction, are backed by our comprehensive 3 Year Warranty.

We hope you will enjoy using your purchase for many years to come.

ROUTER TABLE



Always read the instructions for electrical products carefully before use. It will help you understand your product better and avoid unnecessary risks. Keep this instructions manual in a safe place for future use.

This Router Table will suit woodworking enthusiasts and those new to the craft of routing. It is packed with features to maximise the versatility of your router. It allows the router to be inverted and used as a shaper for making moldings, and working on small pieces.

Machine specifications

Technical specifications

Voltage	230 V~
Frequency	50 Hz
Main table size	455 x 330 mm
Extension table size (with extension wings)	855 x 330 mm
Extension wing size	200 x 330 mm
Max router base plate diameter	155 mm
Weight	6 kg

Product information

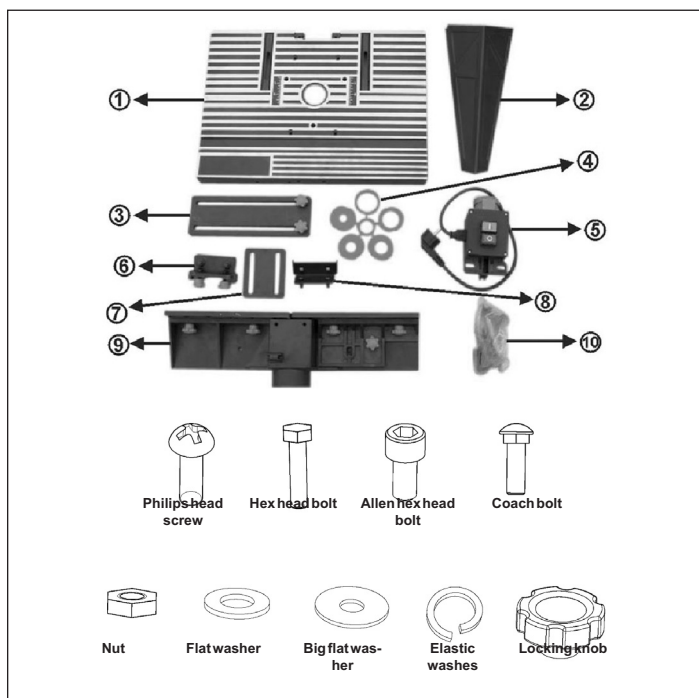


Fig. 1

Maintenance



Disconnect the machine from the mains before carrying out cleaning and maintenance work.

This machine has been designed to operate over a long period of time with a minimum of maintenance. Continuous satisfactory operation depends upon proper machine care and regular cleaning.

Cleaning

Regularly clean the machine housing with a soft cloth, preferably after each use. Keep the ventilation slots free from dust and dirt. If the dirt does not come off use a soft cloth moistened with soapy water. Never use solvents such as petrol, alcohol, ammonia water, etc. These solvents may damage the plastic parts.

Lubrication

This machine needs no additional lubrication.

Faults

Should a fault occur, please contact the address on the warranty card. On the back page of this manual you find an exploded view showing the parts that can be ordered.

Environment

To prevent damage during transport, the appliance is delivered in a solid packaging which consists largely of reusable material. Therefore please make use of options for recycling the packaging.

Operation



As with all power tools, especially those with cutters/blades, keep hands and fingers safety away from blades by using push sticks etc when working on small workpieces.

Dust extraction

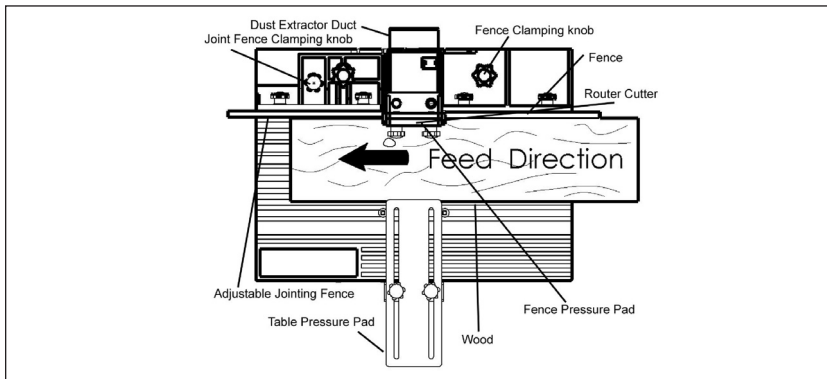


Fig.17

The router table is provided with a dust extraction facility, where a vacuum extractor may be connected to the outlet at the rear of the table. Note however, that this does not preclude the user from wearing a face mask to prevent the inhalation of dust particles.

Machine specifications

1. Table top
2. Table leg
3. Table pressure pad including fittings
4. Table insert
5. Switch box
6. Guide for fence pressure pad
7. Fence pressure pad
8. Guide for table pressure pad
9. Fence profile
10. Plastic bag containing screws and fittings



The plastic bag is not a toy! Avoid danger of suffocation, keep this bag away from babies and children. Do not use in cribs, beds, carriages or play pens. Knot bag before throwing away

Package contents

- 1 Table top
- 4 Table legs
- 1 Table pressure pad, including fittings (set)
- 1 Table insert (set)
- 1 Switch box
- 1 Guide for fence pressure pad (set)
- 1 Fence pressure pad
- 1 Guide for table pressure pad (set)
- 1 Fence profile
- 4 Knobs
- 1 Plastic bag containing screws and fittings, details please refer to the followings:
- 4 Philips head screws, M6X20
- 4 Hex head bolts, M6X16
- 1 Hex head bolts, M6X25
- 1 Hex head bolts, M6X40
- 16 Allen hex head bolts, M6X12
- 4 Coach bolts, M5X50
- 6 Nuts, M6
- 4 Nuts, M5
- 18 Flat washers, Ø 6
- 2 Big flat washers, Ø 6
- 16 Elastic washers, Ø 6
- 2 Locking knobs

Machine specifications

- 1 Users manual
- 1 Quick set-up guide
- 1 After Sales-card

Operation



When making adjustments etc, always ensure the router is isolated from the main electrical supply by switching off and removing the plug from the socket.

Note: Always refer to the specific router operating instruction manual when making height and speed adjustments etc.

Installing bits

To install bits whilst the router is situated in the table will require the router to be lowered fully. Select desired bit and install. Fit the table insert closest to the size of the bit, ensure the bit does not touch the insert.

Height adjustment

Raise the router until the bit protrudes through the table the required amount. Make test cuts on scrap pieces of wood to set accurately.

Fence adjustment

Loosen the two fence clamping knobs and position the fence as desired, use the graduation marks to set the fence parallel. Make test cuts on scrap pieces of wood to set accurately.

Pressure pad

Set the fence pressure pad to hold the piece of wood flat on the table and against the fence whilst machining. To do this, place the piece of wood against the fence and below the relevant pad to be adjusted, loose the two locking knobs and lower the pad until it rests on the wood, push the pad down a little further to apply sufficient pressure to hold the wood flat on the table. Adjust the table feather board in the same manner to hold the wood firmly against the fence.

Jointing fence

Set the jointing fence to support the wood when cutting the full thickness. Adjust the cutting depth etc as previously described, proceed to machine the piece of wood until the lead edge passed over the jointing fence by approx 25mm. Switch off and isolate from the main electrical supply. Hold the wood firmly against the Fence, loosen the jointing fence clamping knob, slide the jointing fence out until it touches the wood and then tighten the clamping knob. Back the workpiece away from the cutter before switching on again.

Assembly

sized blocks of wood or similar supportable items. (Fig. 14)

- Place the router in position on the underside of the table as central as possible. Insert two coach bolts into holes marked "C" (Fig. 4) from the table top, now underneath (Fig. 15).
- Loosely secure router in position with the 4 bolts (Fig. 16). It may be necessary to rotate the router in order to locate all 4 bolts correctly. If router is fitted with a speed control, try if possible to position the speed control where it can easily be accessed from the front of the table. Once the router is in the desired position, tighten the 4 bolts sufficiently to prevent the router moving whilst in operation.
- Plug the router plug into the receptacle of the switch box.



This router table only can fit routers with up to 155mm diameter base plate.

- Your router table is now fully assembled and ready for use.

Safety instructions

The following symbols are used in these instructions:



Read instructions carefully.



Conformity with the relevant EU safety.



Danger of life and risk of injury as well as risk of damage to the machine in case of non-adherence to the safety instructions in these instructions of use.



Danger of electric shock.



Remove the plug from the mains socket.



Danger! Keep hands away from moving parts.



Wear ear protection.



Wear safety goggles.



Wear a protection mask.

General safety instructions

Caution! Read all instructions. The non-observation of the instructions mentioned below may cause an electric shock, fire and/or severe injuries. The term "electric tool" mentioned below refers to mains-operated electric tools (with power cord) and to rechargeable electric tools (without power cord). Keep these instructions for use in a safe place.

1) Workplace

- (a) Keep your workplace clean and tidy. Untidy and badly illuminated work

Safety instructions

areas may lead to accidents.

- (b) Do not operate this machine in potentially explosive environments containing combustible liquids, gases or dusts. Electric tools send out sparks which may ignite dust or vapours.
- (c) Keep children and other persons away from the electric tool during use. When distracted, you may lose control over the apparatus.

2) Electric safety

- (a) The plug of the machine has to be suitable for the socket. The connector may not be modified in any way. Do not use an adapter plug together with earthed devices. Unchanged connectors and fitting sockets reduce the risk of an electric shock.
- (b) Avoid body contact to earthed surfaces, such as pipes, radiator, stoves and refrigerators. There is a higher risk of an electric shock, if your body is earthed.
- (c) Keep the machine clear of rain or humidity. The penetration of water into an electrical device increases the risk of an electric shock.
- (d) Do not use the cable for unintended purposes, to carry or suspend the machine or to pull the connector out of the socket. Keep the cable clear of heat, oil, sharp edges or any moving parts. Damaged or entangled cables increase the risk of an electric shock.
- (e) When using an electric tool in the open, use an extension cable only which has been approved for outdoor use. The use of an extension cable suitable for use in the open will reduce the risk of an electric shock. Always use an RCD (residual current device or circuit breaker).
- (f) Hold the machine at the insulated gripping surfaces as the belt grinder may hit its own power cord. Damaging a live cable may make metal machine parts live, which may lead to an electric shock.

3) Personal safety

- (a) Please pay attention and watch what you are doing, and carry out the work with the electric tool sensibly. Do not use the machine, when you are tired or under the influence of drugs, alcohol or medicine. A moment of carelessness in the use of the machine could lead to serious injuries.
- (b) Wear your safety equipment and always put on safety goggles. Wearing personal protective gear, such as dust mask, anti-skid safety shoes, hard hat and ear protection, depending on the type of use of the electric tool, will reduce the risk of injury.
- (c) Avoid unintentional operation. Make sure that the switch is in the "OFF" position before you remove the plug from the socket. If you have your

Assembly

This router table is supplied with extra extensions to improve the control on the work piece.

- Place the extensions on both sides as indicated in the figure.
- Use the enclosed screws (4 pieces per extension) to connect the extension correctly to the router table.

Mounting the router

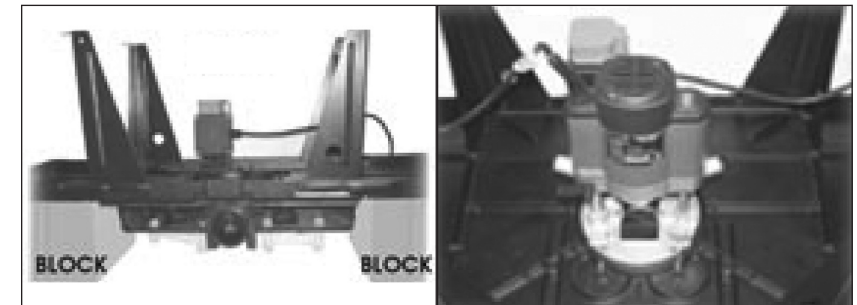


Fig.14 Fig.15



Fig.16

Attach the router to the router table by doing the following:

- Loosen the fence securing knobs and slide fence forwards as far as possible, this prevents the router coach bolts (M5X50) from falling through the table when it is turned over.
- Carefully turn the table over and support by it laying it onto suitable

Assembly

- Insert two coach bolt (M6X25) into the holes on the top of guide for fence pressure pad (Fig. 6).
- Put the guide for fence pressure pad on the top of fence, and align two holes with the two holes on the fence, then insert two bolts (M6X25) into the holes, and secure in position with nuts (Fig. 7).
- Slide the two front fence, in order to have enough space for fence pressure pad, then put fence pressure pad on the two bolts, and secure it in position with washer and locking knob (Fig. 8 and Fig. 9).

Fit table pressure pad (3, Fig. 1) by doing the following:

- Loosen all the fittings on table pressure pad.
- Loosen two screws on guide for table pressure pad (8, Fig. 1 - page 4), and align two hole on guide for table pressure into the two holes on the front side wall on the table, then insert two screws into the holes, secure it in position with nut (Fig. 10).
- Insert two coach bolts (M6X25) into the hole on guide for table pressure pad, and put table pressure pad on the two bolts, and secure it in position with washer and locking knob (Fig. 11 and Fig. 12)

Fit the switch box (5, Fig. 1) by doing the following:

- Align two holes on switch box into the two holes on the front side wall of table.
- Fit in position with two Phillips head screws inserted from the front of table secured with two nuts (Fig. 13).

Mounting extensions



Fig.18

Safety instructions

- finger on the switch when carrying the machine or if you connect the running machine to the socket, this may lead to accidents.
- (d) Remove the adjusting tools or the spanners before switching on the machine. A tool or a key which is located in a revolving part of the machine may lead to injuries.
- (e) Concentrate at all times. Ensure a safe stand and keep your balance at all times. In this case you will be able to control the machine better in unexpected situations.
- (f) Wear suitable clothing. Do not wear any loose clothing or jewellery. Keep your hair, clothing and gloves clear of any moving parts.
- (g) If dust extraction or collection devices can be mounted, make sure that they are connected properly and are used in the proper way. The use of these pieces of equipment reduce hazards caused by dust.

4) Careful handling and use of electric tools

- (a) Use the correct tool for the job at hand.
- (b) Do not use an electric tool, if the switch is defective. An electric tool, which cannot be switched on or off, is dangerous and has to be repaired.
- (c) Remove the plug from the socket before setting down the machine, changing accessories or putting the machine aside. This precautionary measure prevents the unintentional start of the machine.
- (d) Keep unused electric tools out of reach of children. Do not permit persons to use the machine who are not familiar with it or who have not read these instructions. Electric tools are dangerous, if they are used by inexperienced persons.
- (e) Maintain the machine with care. Please check whether the movable parts are perfectly operational and do not jam, whether parts have broken or have been damaged in such a way that the function of the machine is impaired. Have damaged parts repaired prior to using the machine. Many accidents are caused by electric tools which are poorly maintained.
- (f) Keep all cutting tools sharp and clean.
- (g) Use the electric tool, the accessories, the insert tools, etc according to these instructions, and in the way described for this special type of apparatus. In the process, take the working conditions and the work to be carried out into consideration. Only use this belt sander for the purpose for which it is intended.
- (h) Use clamps or vice to hold work. It is safer than using your hands and frees both hands to operate the tool.

Safety instructions

5) Servicing

- (a) Have your machine repaired by qualified expert staff using original spare parts only.
- (b) Caution! The use of accessories or add-on devices other than those recommended in these instructions may mean a risk of injury. Use original spare parts only.

Additional safety instructions

Safety is a combination of common sense, staying alert and knowing how your router table works. Read this manual to understand this router table.

- Always wear eye protection.
- Noise levels vary widely with location. To avoid possible hearing damage, wear ear plugs or ear muffs when using your router table for long periods of time.
- For dusty operations, wear a dust mask along with safety goggles.
- Follow the instructions in your router owner's manual.
- Warning! Vibrations, caused by the router during use, can cause fasteners to become loose. Before use and periodically during use, check all fasteners to make sure that all are tight and secure.
- Do not use this product until all assembly and installation steps have been completed. Make sure you have read and understand all safety and operational instructions in this manual and the router owner's manual.
- Make sure that the router bit is properly positioned and clamped in the router before making any cuts.
- Do not use the router table as a workbench or work surface. Doing so may damage it, causing it to be unsafe to use. A workbench should be used for this purpose.
- This product is designed for cutting flat workpieces. Do not cut or attempt to cut workpieces that are not flat.
- This product is designed for cutting wood workpieces only. Do not use to cut metal or other non-wood materials.
- The use of auxiliary in-feed and out-feed supports is strongly recommended when routing long workpieces. Otherwise those workpieces can cause the router table to tip over.
- Keep hands clear of the router bits and working area.
- Make and use a push stick to move small workpieces across the cutting area.
- Clean the router after use. The use of a wet/dry vac or vacuum equipment is recommended.

Assembly

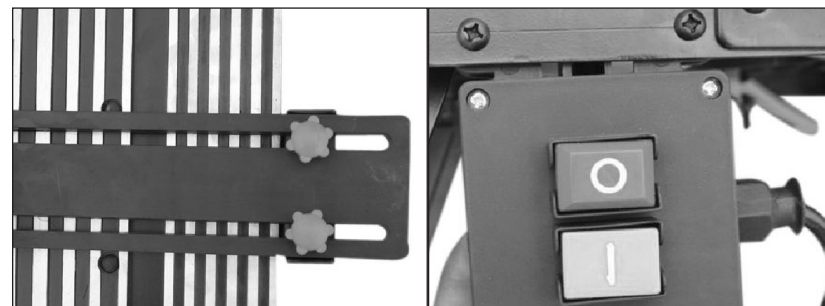


Fig.12 Fig.13



Before assembling the table, ensure all components are present. In case of shortages please contact the service address on the warranty card.

To assemble your router table, do the following:

- Lay the table top (1, Fig.1) upside down on a flat surface (Fig.2).
- Place a table leg (2, Fig.1) using four allen hex head bolts (M6X12), do not fully tighten yet (Fig.3).
- Repeat the above for the other three legs, and make sure the four legs are on the same flat surface, then tighten all the bolts.
- Once all four legs are securely tightened, turn assembly over, check the table does not rock. If any rocking is detected, this must be rectified before continuing by loosening the bolts on the offending leg/legs and adjusting accordingly.
- Insert two coach bolts (M5X50) into holes marked "B" from the top of the table (Fig.4).
- Attach the fence (9, Fig.1), using hex head bolts, washers and knobs supplied. Insert the bolts from the underside of the table through the holes marked "A" (Fig. 5). Place the fence on the bolts and secure in position with washers and knobs.

Note: Use the graduated scales to line up the fence accurately.

Fit the fence pressure pad (7, Fig. 1) by doing the following:

- Loosen all the fittings on the guide for fence pressure pad (6, Fig. 1).

Assembly

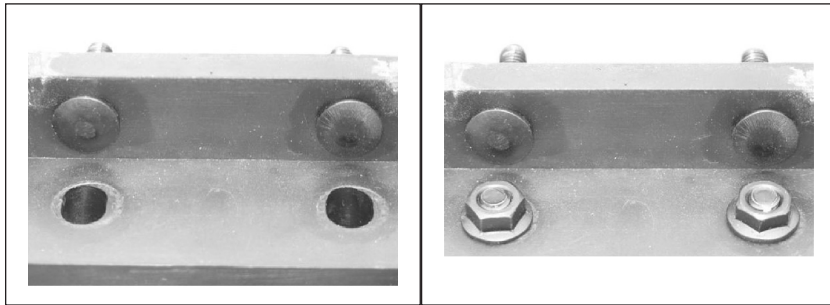


Fig.6 Fig.7

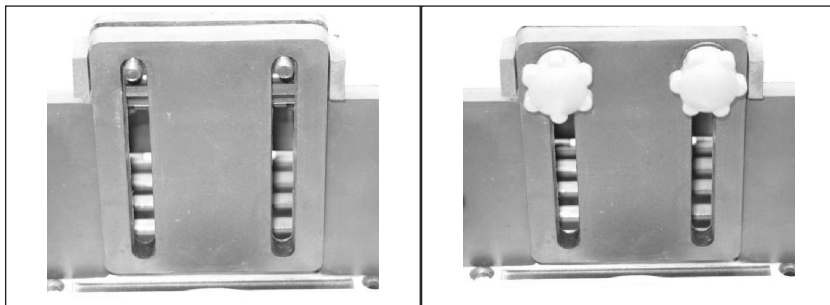


Fig.8 Fig.9

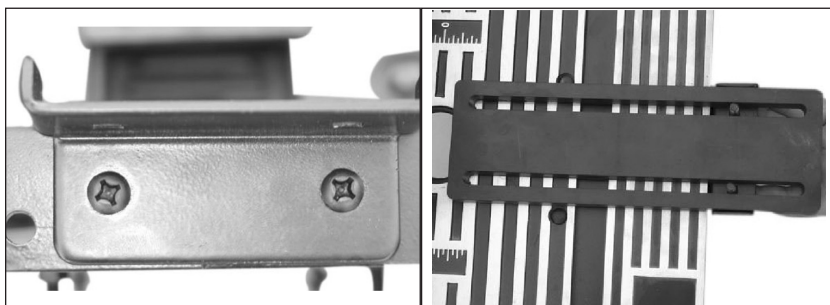


Fig.10 Fig.11

Safety instructions

- Always make sure that work surface of the router table is clean and free from dust, chips, and foreign particles that can interfere with the cut you are going to make. The use of a wet/dry vac or vacuum equipment is recommended.
- The fence that comes with the router table has a dust collector to which a wet/dry vac can be attached.
- Check the function of the guard before each use. Remove all dust, chips, and any other foreign particles that can affect its function.
- **Warning!** Never put your fingers under the overhead guard when the router is plugged into an electrical outlet or when the router bit is rotating.
- Always feed the workpiece against the rotation of the cutter or router bit.
- Router bits are extremely sharp, be extra careful when handling and using them.
- Make sure that the router bits being used are sharp or have been properly re-sharpened. This will permit fast, efficient, and safe routing.
- Some routers, when positioned in an upside down position (such as on a router table), will drop or fall out of the router base when the base clamp is loosened to adjust height or depth of cut. Therefore, it is extremely important to support the router from below when making these adjustments or whenever the base clamp is loosened.
- Always look under the router table at the router switch box when turning the router ON or OFF. Do not touch anything but the switch box when doing this. Never reach under the router table for any reason when the router table is running, except to turn it OFF.
- **Warning!** Before making any cut, make sure the router is turned OFF, the router bit is not rotating, and the power cord is unplugged from the electrical outlet. Then, make absolutely sure that the overhead guard clears the router bit and the workpiece. A trial pass, with the router turned OFF and the router bit not turning, is strongly recommended.
- **Warning!** Never leave the router table unattended while the router is running. Turn the router OFF before leaving the router table for any reason.
- Immediately throw away old cables or plugs when they have been replaced by new ones. It is dangerous to insert the plug of a loose cable in the wall outlet.
- Only use an approved extension cable suitable for the power input of the machine. The minimum conductor size is 1.5 mm². When using a cable reel always unwind the reel completely.

Safety instructions



Always check that the power supply corresponds to the voltage on the rating plate.

Assembly

Assembling the router table

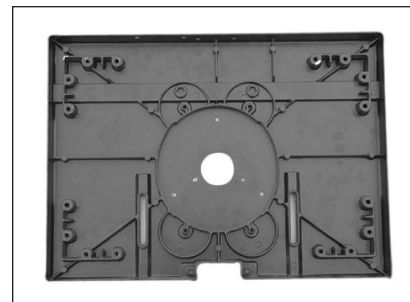


Fig. 2

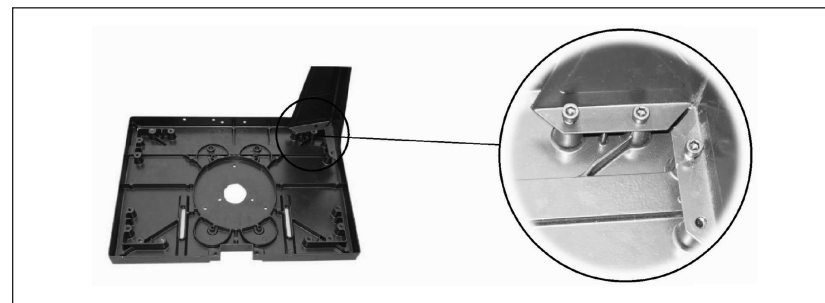


Fig. 3

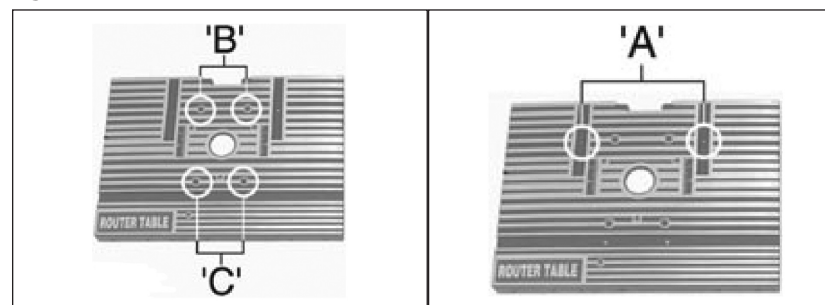


Fig.4 Fig.5

Free Manuals Download Website

<http://myh66.com>

<http://usermanuals.us>

<http://www.somanuals.com>

<http://www.4manuals.cc>

<http://www.manual-lib.com>

<http://www.404manual.com>

<http://www.luxmanual.com>

<http://aubethermostatmanual.com>

Golf course search by state

<http://golfingnear.com>

Email search by domain

<http://emailbydomain.com>

Auto manuals search

<http://auto.somanuals.com>

TV manuals search

<http://tv.somanuals.com>