

Always there to help you

Register your product and get support at
www.philips.com/welcome

MCD5110



User manual

PHILIPS

Contents

1 Important	2
Safety	2
2 Your micro system	4
Introduction	4
What's in the box	4
Overview of the main unit	5
Overview of the remote control	6
3 Connect	8
Place the unit	8
Connect speakers	8
Connect FM antenna	8
Connect video/audio cables	9
Connect an external audio device	10
Connect power	10
4 Get started	11
Prepare the remote control	11
Set clock	11
Activate demonstration mode	11
Turn on	12
Find the correct viewing channel	12
Select the correct TV system	12
Change system menu language	12
5 Play	13
Play from disc	13
Play from USB or recored discs	14
Play a slideshow with background music	14
Resume video play from last stopped point	14
Control play	14
Play options	15
Change the audio channel	15
6 Enjoy karaoke	16
Adjust Karaoke settings	16
7 Listen to the radio	17
Tune to a radio station	17
Program radio stations automatically	17
Program radio stations manually	17
Select a preset radio station	17
8 Other features	18
Set the alarm timer	18
Set the sleep timer	18
Listen to an external device	18
9 Adjust settings	19
General setup	19
Video setup	19
Audio setup	20
Preferences	21
10 Product information	22
Specifications	22
Supported disc formats	23
USB playability information	23
11 Troubleshooting	24
12 Notice	26

1 Important

Safety



This 'bolt of lightning' indicates uninsulated material within the device may cause an electrical shock. For the safety of everyone in your household, please do not remove the covering.

The 'exclamation mark' calls attention to features for which you should read the enclosed literature closely to prevent operating and maintenance problems.

WARNING: To reduce the risk of fire or electric shock, the device should not be exposed to rain or moisture and objects filled with liquids, such as vases, should not be placed on the device.

CAUTION: To prevent electric shock, fully insert the plug. (For regions with polarized plugs: To prevent electric shock, match wide blade to wide slot.)

Important Safety Instructions

- Follow all instructions.
- Heed all warnings.
- Do not use this device near water.
- Clean only with dry cloth.
- Do not block any ventilation openings. Install in accordance with the manufacturer's instructions.
- Do not install near any heat sources such as radiators, heat registers, stoves, or other devices (including amplifiers) that produce heat.

- Protect the power cord from being walked on or pinched, particularly at plugs, convenience receptacles, and the point where they exit from the device.
- Only use attachments/accessories specified by the manufacturer.
- Use only with the cart, stand, tripod, bracket, or table specified by the manufacturer or sold with the device. When a cart is used, use caution when moving the cart/device combination to avoid injury from tip-over.



- Unplug this device during lightning storms or when unused for long periods of time.
- Refer all servicing to qualified service personnel. Servicing is required when the device has been damaged in any way, such as power-supply cord or plug is damaged, liquid has been spilled or objects have fallen into the device, the device has been exposed to rain or moisture, does not operate normally, or has been dropped.
- Battery usage **CAUTION** – To prevent battery leakage which may result in bodily injury, property damage, or damage to the unit:
 - Install all batteries correctly, + and - as marked on the unit.
 - Do not mix batteries (old and new or carbon and alkaline, etc.).
 - Batteries (packed or installed) shall not be exposed to excessive heat such as sunshine, fire or the like.
 - Remove batteries when the unit is not used for a long time.
- The device shall not be exposed to dripping or splashing.

- Do not place any sources of danger on the device (e.g. liquid filled objects, lighted candles).
- Where the MAINS plug or an appliance coupler is used as the disconnect device, the disconnect device shall remain readily operable.



Warning

- Never remove the casing of this device.
- Never lubricate any part of this device.
- Never place this device on other electrical equipment.
- Keep this device away from direct sunlight, naked flames or heat.
- Never look into the laser beam inside this device.
- Ensure that you always have easy access to the power cord, plug, or adaptor to disconnect this device from the power.

2 Your micro system

Congratulations on your purchase, and welcome to Philips! To fully benefit from the support that Philips offers, register your product at www.philips.com/welcome.

Introduction

With this unit, you can:

- Watch video from DVD/VCD/SVCD, or USB storage devices;
- enjoy audio from discs, USB storage devices, or other external devices;
- enjoy Karaoke by connecting a microphone.
- view pictures from discs or USB storage devices;
- listen to FM radio stations.

You can enrich sound output with below sound effect:

- Digital Sound Control (DSC)
 - DSC 1: Balanced
 - DSC 2: Clear
 - DSC 3: Powerful
 - DSC 4: Warm
 - DSC 5: Bright

The unit supports these media formats:



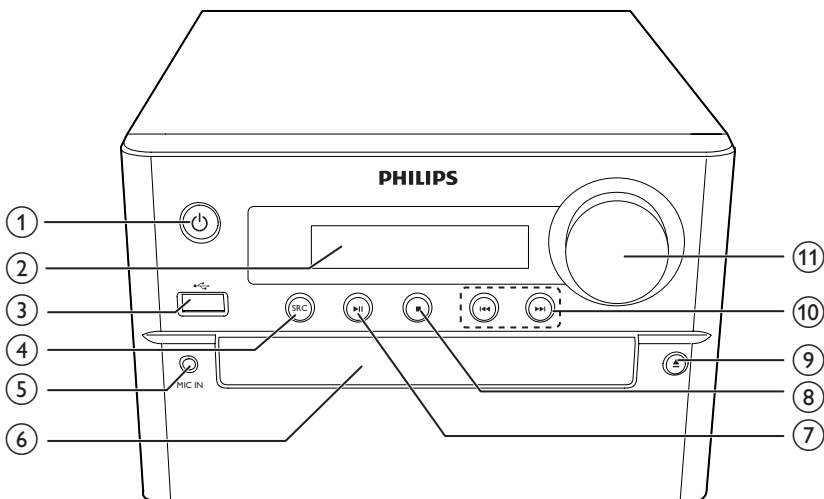
DVD region code	Countries
	Europe

What's in the box

Check and identify the contents of your package:

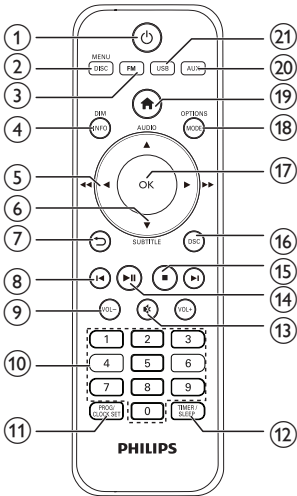
- Main unit
- 2 x speakers
- 1 x composite video cable (yellow)
- Remote control (with two AAA batteries)
- User manual

Overview of the main unit



- ① **⏻**
- Turn the unit on or off.
 - Switch to standby mode or Eco standby mode.
- ② **Display panel**
- Show the current status.
- ③ **USB**
- Socket for a USB storage device.
- ④ **SRC**
- Select a source: DISC, USB, FM, AUX IN.
- ⑤ **MIC IN**
- Connect a microphone.
- ⑥ **Disc compartment**
- ⑦ **▶ ||**
- Start, pause, or resume play.
- ⑧ **■**
- Stop play.
 - Erase a programmed radio station.
 - Activate/deactivate demonstration mode.
- ⑨ **▲**
- Open/close the disc compartment.
- ⑩ **◀◀ / ▶▶**
- Skip to the previous/next track, title or chapter.
 - (Press and hold) Fast backward/forward within a track/disc/USB.
 - Tune to a radio station.
 - (Press and hold) search for radio stations automatically.
- ⑪ **VOLUME**
- Adjust volume.
 - Adjust time during alarm/sleep timer setting.

Overview of the remote control



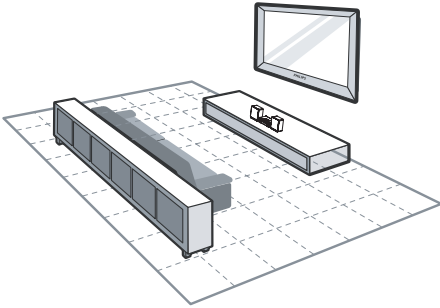
- ① **⏻**
 - Turn the unit on or off.
 - Switch to standby mode or Eco standby mode.
- ② **DISC/MENU**
 - Select the DISC source.
 - Access the DISC menu.
- ③ **FM**
 - Select the FM source.
- ④ **DIM/INFO**
 - View playback information.
 - In standby mode, adjust brightness of the display panel.
 - In tuner mode, (press and hold) synchronize clock with RDS.
- ⑤ **◀/▶ (◀◀/▶▶)**
 - Navigate through the menu.
 - (Press and hold) fast backward/forward within a track/disc/USB.
 - Tune to a radio station.
 - Rotate a JPEG/Kodak picture.

- ⑥ **AUDIO (▲) / SUBTITLE (▼)**
 - Navigate through the menu.
 - Invert a JPEG/Kodak picture.
 - **AUDIO (▲)**: Select the audio language.
 - **SUBTITLE (▼)**: Select the subtitle language.
 - Set time during alarm/sleep timer setting.
- ⑦ **↶**
 - Return to the previous display menu.
- ⑧ **◀/▶**
 - Skip to the previous or next title, chapter, track, or file.
 - Skip to a preset radio station.
- ⑨ **VOL -/VOL +**
 - Adjust volume.
 - Set time during alarm/sleep timer setting.
- ⑩ **Numeric buttons**
 - Select a title/chapter/track to play.
 - Select a preset number.
- ⑪ **PROG/CLOCK SET**
 - Program radio stations.
 - Set the clock.
 - View clock information.
- ⑫ **TIMER/SLEEP**
 - Set the alarm timer.
 - Set the sleep timer.
- ⑬ **🔇**
 - Mute or restore volume.
- ⑭ **▶▶**
 - Start, pause, or resume play.
- ⑮ **■**
 - Stop play.
 - Erase a programmed radio station.

- ⑩ **DSC**
 - Enrich sound effect with Digital Sound Control (DSC).
- ⑪ **OK**
 - Confirm a selection.
 - Switch between FM stereo and mono broadcast.
- ⑫ **MODE/OPTIONS**
 - Select repeat/shuffle play modes.
 - In DISC/USB play mode, press to select preferred play options.
- ⑬ **🏠**
 - Access the system menu.
- ⑭ **AUX**
 - Select the AUX source.
- ⑮ **USB**
 - Select the USB source.

3 Connect

Place the unit



- 1 Place the unit near the TV.
- 2 Place the left and right speakers at equal distance from the TV and at an angle of approximately 45 degrees from the listening position.

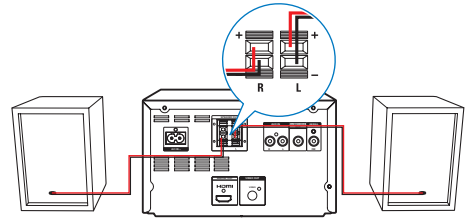
Note

- To avoid magnetic interference or unwanted noise, never place this apparatus and speakers too close to any radiation devices.
- Place this unit on top of a table.
- Never place this unit in an enclosed cabinet.
- Install this unit near the AC outlet where the AC power plug can be easily reached.

Connect speakers

Note

- For optimal sound, use the supplied speakers only.
- Connect only speakers with impedance that is the same or higher than the supplied speakers. Refer to the Specifications section of this manual.

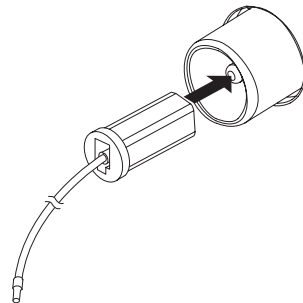


- 1 Hold down the socket flap.
- 2 Insert the stripped part of the wire completely.
 - Insert the right speaker wires to "R", left speaker wires to "L".
 - Insert the red wires to "+", black wires to "-".
- 3 Release the socket flap.

Connect FM antenna

Tip

- For optimal reception, fully extend and adjust the position of the antenna.
 - For better FM stereo reception, connect an outdoor FM antenna to the **FM AERIAL** socket.
 - The device does not support MW radio reception.
-
- Connect the supplied FM antenna to the **FM AERIAL** socket on the back of the device.

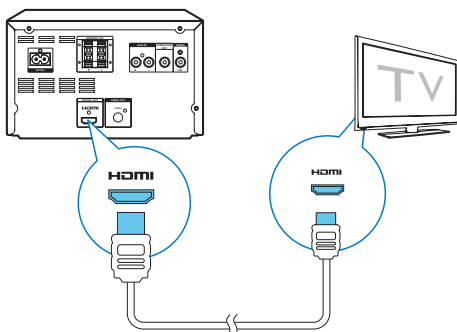


Connect video/audio cables

Select the best video connection that the TV can support.

- **Option 1:** Connect to the HDMI socket (for an HDMI, DVI or HDCP-compliant TV).
- **Option 2:** Connect to the composite video socket (for a standard TV).

Option 1: Connect to the HDMI socket

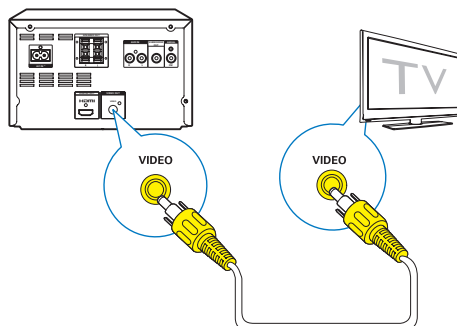


- Connect an HDMI cable (not supplied) to:
 - the **HDMI (DIGITAL OUT)** socket on this unit.
 - the HDMI input socket on the TV.

Tip

- If the TV has a DVI connector only, connect via an HDMI/DVI adaptor. Connect an audio cable for sound output.
- If this unit connects to a TV compatible with 1080p or 1080p/24Hz, Philips recommends HDMI category 2 cable, also known as High Speed HDMI cable, for optimal video and audio output.
- This type of connection provides the best picture quality.

Option 2: Connect to the composite video socket



- Connect a composite video cable to:
 - the **VIDEO (VIDEO OUT)** jack on this unit.
 - the VIDEO input socket on the TV.

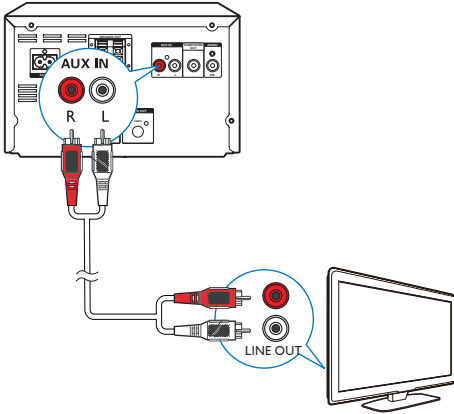
Tip

- The video input jack on the TV might be labeled as A/V IN, VIDEO IN, COMPOSITE or BASEBAND.

Connect an external audio device

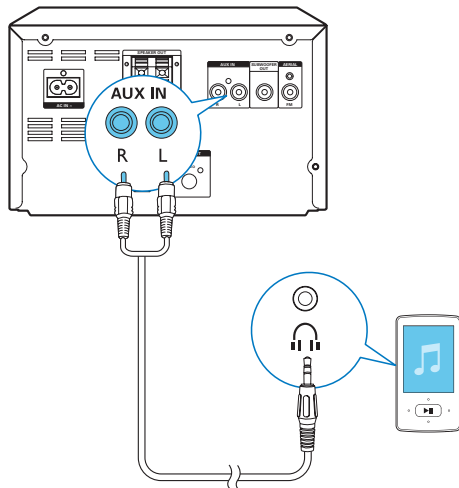
You can route audio from an external audio device to this unit.

If the external audio device has analog audio output sockets (such as your TV):



- Connect audio cables (red/white - not supplied) to:
 - the **AUDIO-IN(L and R)** sockets on the back of the unit.
 - the audio output sockets on the external audio device.

If the external audio device has a 3.5mm audio output socket:



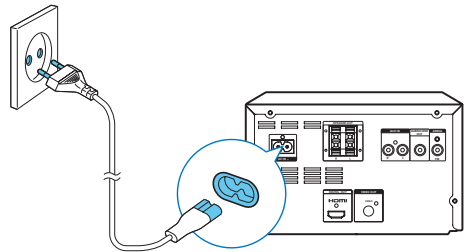
- Connect a red/white-to-3.5mm audio cable (not supplied) to:
 - the **AUDIO-IN (L and R)** sockets on the back of the unit.
 - the headphone socket on the external audio player.

Connect power



Caution

- Risk of product damage! Ensure that the power supply voltage corresponds to the voltage printed on the back or the underside of the unit.
- Risk of electric shock! When you unplug the AC power cord, always pull the plug from the socket. Never pull the cord.
- Before you connect the AC power cord, make sure that you have completed all other connections.



- Connect the AC power cord to
 - the **AC IN ~** socket on this unit.
 - the wall power socket.

4 Get started

! Caution

- Use of controls or adjustments or performance of procedures other than herein may result in hazardous radiation exposure or other unsafe operation.

Always follow the instructions in this chapter in sequence.

If you contact Philips, you will be asked for the model and serial number of this apparatus. The model number and serial number are on the back of the apparatus. Write the numbers here:

Model No. _____

Serial No. _____

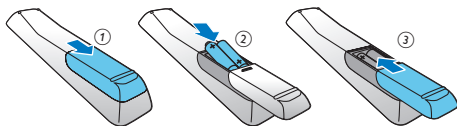
Prepare the remote control

! Caution

- Risk of explosion! Keep batteries away from heat, sunshine or fire. Never discard batteries in fire.
- Risk of decreased battery life! Never mix different brands or types of batteries.
- Risk of product damage! When the remote control is not used for long periods, remove the batteries.

To insert the remote control battery:

- 1 Open the battery compartment.
- 2 Insert the supplied AAA batteries with correct polarity (+/-) as indicated.
- 3 Close the battery compartment.



Set clock

- 1 In standby mode, press and hold **PROG/CLOCK SET** on the remote control for more than two seconds.
 - ↳ [24H] or [12H] hour format is displayed.
- 2 Press **▲ / ▼** (or **VOL -/VOL +**) to select [24H] or [12H] hour format, and then press **PROG/CLOCK SET**.
 - ↳ The hour digits are displayed and begin to blink.
- 3 Press **▲ / ▼** (or **VOL -/VOL +**) to set hour, and then press **PROG/CLOCK SET**.
 - ↳ The minute digits are displayed and begin to blink.
- 4 Repeat step 3 to set minute.

≡ Note

- If no button is pressed in 90 seconds, the system exits clock setting mode automatically.

✱ Tip

- In Eco power mode, you can press **PROG/CLOCK SET** to view the clock information.

Activate demonstration mode

In this mode, you can see an overview of all features.

- In standby mode, press and hold **■** on the main unit to activate demonstration mode.
 - ↳ A demonstration of major available features starts.

To deactivate the demonstration mode:

- Press **■** on the main unit again.

Turn on

- Press **⏻**.
 - ↳ The device switches to the last selected source.

Switch to standby mode

- Press **⏻** again to switch the unit to standby mode.
 - ↳ The clock (if set) is displayed on the panel.

To switch to ECO standby mode:

- Press and hold **⏻** for more than two seconds.
 - ↳ The display panel is dimmed.



Note

- The unit switches to Eco Power Standby mode after 15 minutes in standby mode.

To switch between standby mode and ECO standby mode:

- Press and hold **⏻** for more than two seconds.

Find the correct viewing channel

- 1 Press **DISC** to switch to disc mode.
- 2 Turn on the TV and switch to the correct video-in channel in one of the following ways:
 - Go to the lowest channel on your TV, and then press the Channel Down button until you see the blue screen.
 - Press the source button repeatedly on the remote control of your TV.



Tip

- The video-in channel is between the lowest and highest channels and may be called FRONT, A/V IN, VIDEO etc. See the TV user manual on how to select the correct input on the TV.

Select the correct TV system

Change this setting if the video is not displayed correctly. By default, this setting matches the most common setting for TVs in your country.

- 1 Press **⬆**.
- 2 Select **[Setup]** (Setup) -> **[Video]** (Video) -> **[TV System]**(TV System).
- 3 Select a setting and press **OK**.
 - **[PAL]** (PAL) - For TV with PAL color system.
 - **[Multi]** (Multi) - For TV that is compatible with both PAL and NTSC.
 - **[NTSC]** (NTSC) - For TV with NTSC color system.
- 4 To return to the previous menu, press **⬅**.
- 5 To exit the menu, press **⬆**.

Change system menu language

- 1 Press **⬆**.
- 2 Select **[Setup]** (Setup) -> **[General]** (General) -> **[OSD Language]** (OSD Language), and press **OK**.
- 3 Select a setting and then press **OK**.
- 4 To exit the menu, press **⬆**.

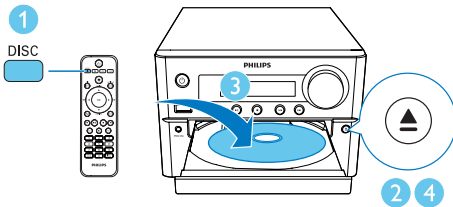
5 Play

Play from disc

! Caution

- Risk of product damage! Never play discs with accessories such as disc stabilizer rings or disc treatment sheets.
- Never put any objects other than discs into the disc compartment.

- 1 Press **DISC/MENU** to select the disc source.
- 2 Press **▲** to open the disc compartment.
- 3 Insert a disc with the printed side facing upward.
- 4 Press **▲** to close the disc compartment.
↳ Play starts automatically.



If play does not start automatically:

- Select a title/chapter/track and then press **▶||**.

* Tip

- To play a locked DVD, enter the 6-digit parental control password (000000).

Use the disc menu

When you load a DVD/(S)VCD disc, a menu may be displayed on the TV screen.

- Press **DISC/MENU** to access or exit disc menu manually.

For VCD with PlayBack Control (PBC) feature (version 2.0 only):

With the PBC feature, you can play VCD interactively according to the menu screen.

- During play, press **DISC/MENU** to enable/disable PBC.
 - ↳ When PBC is enabled, the menu screen is displayed.
 - ↳ When PBC is disabled, normal play is resumed.

Select an audio language

- During disc play, press **AUDIO (▲)** to select an audio language for a DVD or DivX (Home Theater 3.1) video.
 - ↳ The language options are displayed. If the selected audio channel is unavailable, the default disc audio channel is used.

≡ Note

- For some DVDs, the language can only be changed from the disc menu. Press **DISC/MENU** to access the menu.

Select a subtitle language

- During play, press **SUBTITLE (▼)** repeatedly to select a subtitle language for a DVD or DivX (Home Theater 3.1) video.

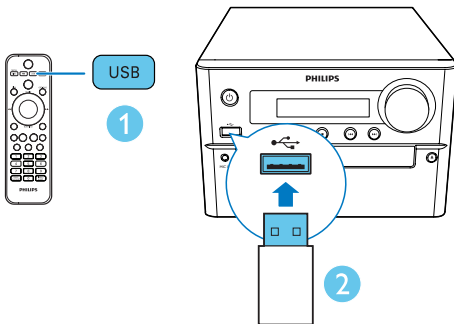
≡ Note

- For some DVDs, the language can only be changed from the disc menu. Press **DISC/MENU** to access the disc menu.

Play from USB or recored discs

You can play DivX (Home Theater 3.1)/MP3/JPEG picture files copied onto a CD-R/RW, recordable DVD, or USB storage device.

- 1 Select a source.
 - Press **USB** or **DISC/MENU** to select the USB or disc source.
- 2 Insert the USB storage device or disc.
↳ Play starts automatically.



To play a specified file:

- 1 Press **■** to stop play.
- 2 Press **▲** / **▼** to select a folder, and then press **OK** to confirm.
 - To return to the previous menu, press **↶**.
- 3 Press **▲** / **▼** to select a file from the folder.
- 4 Press **▶||** to start play.

Note

- You can only play DivX (Home Theater 3.1) videos rented or purchased through the DivX registration code of this unit.
- Subtitle files with the following filename extensions (.srt, .smi, .sub, .ssa, .ass) are supported but do not appear on the file navigation menu.
- The subtitle filename has to be the same as the file name of the video.

Play a slideshow with background music

This unit can play MP3 files and JPEG photos simultaneously.

Note

- The MP3 and JPEG files must be stored on the same disc or USB storage device.

- 1 Play an MP3 file.
- 2 Navigate to the photo folder/album and press **▶||** to start the slideshow.
↳ Slideshow begins and continues till the end of the photo folder or album.
↳ Music play continues till the end of the last file.
 - To return to the previous menu, press **↶**.
 - To stop the slideshow, press **■**.

Resume video play from last stopped point

Note

- This feature is only available for CD/DVD/VCD/DivX play.

- In stop mode and when the disc has not been removed, press **▶||**.

To stop play completely:

- In stop mode, press **■**.

Control play

▲ / ▼	Select a folder.
◀ / ▶ (◀◀ / ▶▶)	Fast backward/forward.
◀ / ▶	Skip to previous or next title/ chapter/track/file.
▶ 	Pause or resume play.
■	Stop play.

VOL -/VOL +	Increase or decrease the volume.
⊘ (mute)	Mute or restore sound.
DSC	Enrich sound effect with DSC: balanced, clear, powerful, warm, and bright.
DIM/INFO	View playback information.

Change the audio channel



Note

- This feature is only available for VCDs and DivX (Home Theater 3.1) videos.

Play options

During video play in DISC mode, press **MODE/OPTIONS** to select different play options.

- **[PBC]** (PBC): turn PlayBack Control on/off.
- **[Aspect Ratio]** (Aspect ratio): select a picture display format to fit the TV screen.
- **[Angle]** (Angle): switch between camera angles.



Note

- Some DVDs contain alternate scenes, such as scenes recorded from different camera angles. For such DVDs, you can select from the available alternate scenes.

- **[Microphone]** (Microphone): turn on or off the microphone sound output.
- **[Karaoke Setup]** (karaoke Setup): set different volumes of karaoke disc.
- **[Vocal]** (Vocal): select various Karaoke audio modes, or turn off original vocal.
- **[Zoom]** (Zoom): during video play, zoom in/out to pan through the image.
- **[Repeat]** (Repeat): choose a repeat play option or turn off the repeat function.
- **[GOTO]** (Goto): during video play, specify a position to start play by entering the desired time or number.
- **[Slow Forward]** (Slow forward) and **[Slow Backward]** (Slow Backward): during video play, select a slow forward/backward speed.

6 Enjoy karaoke

You can connect a microphone (not supplied) to sing along with a music source.

Note

- Before you connect a microphone, set the microphone volume to the minimum to prevent howling.

- 1 Insert a Karaoke disc.
- 2 Connect a microphone to the **MIC IN** socket on this unit.
- 3 Press **▲**, and then select **[Karaoke]** (Karaoke).
- 4 Turn on the microphone sound output.
- 5 Play a Karaoke disc and sing through the microphone.

Adjust Karaoke settings

- **[Microphone]** (Microphone): turn on or off the microphone sound output.
- **[Mic Volume]** (Mic Volume): adjust the microphone volume.
- **[Echo Level]** (Echo Level): adjust the echo level.
- **[Karaoke Scoring]** (Karaoke Scoring): turn off the function of Karaoke scoring or select a difficulty level to score your singing. If a level is selected, the score is displayed after each song ends.
- **[Karaoke Idol]** (Karaoke Idol): Have a Karaoke contest with your friends. Enable this feature, and then follow the on-screen instructions to start the contest.

1) In the **[Karaoke Scoring]** (Karaoke Scoring) option, select a level (basic/intermediate/advance).

2) In the **[Karaoke Idol]** (Karaoke Idol) option, turn on the contest.

↳ The song selection menu is displayed.

3) Input a track (VCD/SVCD) or a title/chapter (DVD) as the first song. Up to 4 songs can be selected.

4) Then select **[Start]** (Start), and press **OK** to start play selected songs.

↳ After all the selected songs end, a contest result is displayed.

- **[Key Shift]** (Key Shift): adjust the pitch level that matches your voice.
- **[Vocal]** (Vocal): select various Karaoke audio modes, or turn off the original vocal.

7 Listen to the radio

Tune to a radio station



Tip

- Position the antenna as far as possible from TV, VCR, or other radiation source.
- For optimal reception, fully extend and adjust the position of the antenna.

- 1 Press **FM** to select the FM source.
- 2 Press and hold **◀/▶** (**◀◀/▶▶**) for more than two seconds.
 - ↳ The radio tunes to a station with strong reception automatically.
- 3 Repeat step 2 to tune to more stations.

To tune to a weak station:

- Press **◀/▶** (**◀◀/▶▶**) repeatedly until you find the optimal reception.

Program radio stations automatically



Note

- You can program a maximum of 20 preset radio stations (FM).

- In tuner mode, press and hold **PROG/CLOCK SET** for more than two seconds to activate automatic programming.
 - ↳ **[AUTO]** (auto) is displayed.
 - ↳ All available stations are programmed in the order of waveband reception strength, and the first programmed radio station is broadcast automatically.

Program radio stations manually

- 1 Tune to a radio station.
- 2 Press **PROG**, and then press **▲/▼** to select a number from 1–20.
- 3 Press **PROG** to confirm.
- 4 Repeat steps 2-3 to program more stations.



Note

- To overwrite a programmed station, store another station in its place.

Select a preset radio station

- In tuner mode, press **◀◀/▶▶** (or press a number directly) to select a preset radio station.

8 Other features

Set the alarm timer

This unit can be used as an alarm clock. You can select DISC, FM, or USB as the alarm source.

Note


- Make sure that you have set the clock correctly.

- 1 In standby mode, press and hold **TIMER/SLEEP** for more than two seconds.
↳ "TIMER SET" (timer set) scrolls on the display panel. Then, "SELECT SOURCE" is displayed.
- 2 Select a source (disc, USB, or tuner).
↳ The hour digits are displayed and begin to blink.
- 3 Press **▲ / ▼** (or **VOL -/VOL +**) repeatedly to set the hour, and then press **TIMER/SLEEP**.
↳ The minute digits are displayed and begin to blink.
- 4 Repeat step 3 to set the minute, and adjust volume.

Note

- If no button is pressed in 90 seconds, the unit exits timer setting mode automatically.

To activate or deactivate the alarm timer:

- In standby mode, press **TIMER/SLEEP** repeatedly to activate or deactivate the alarm.
↳ If the timer is activated,  is displayed.

Tip

- If the disc/USB source is selected, but no disc is placed or no USB connected, the unit switches to the tuner source automatically.

Set the sleep timer

- To set the sleep timer, when the unit is switched on, press **TIMER/SLEEP** repeatedly to select a set period of time (in minutes).
↳ When the sleep timer is activated, **zZ** is displayed.

To deactivate sleep timer:

- When the unit is switched on, press **TIMER/SLEEP** repeatedly until **[SLP OFF]** (sleep off) is displayed.
↳ When the sleep timer is deactivated, **zZ** disappears.

Listen to an external device

You can listen to an external device through this unit with an 3.5mm audio cable (not supplied).

- 1 Make sure that the external audio device is connected to this unit (see 'Connect an external audio device' on page 10).
- 2 Press **AUX** to select the **AUX IN** source.
- 3 Start to play the external device (see the user manual of the external device).

9 Adjust settings

- 1 Press **⬆**.
- 2 Select the **[Setup]** (Setup) page.
- 3 Select a setting and press **OK**.
 - To return to the previous menu, press **⬅**.
 - To exit the menu, press **⬆**.

General setup

On the **[General]** (general) page, you can set the following options:

[Disc Lock] (disc lock)

Lock or unlock a disc.

[OSD Language] (OSD language)

Select the preferred language for on-screen display.

[Auto Standby] (Auto Standby)

Enable this feature to automatically switch to Eco-power standby mode after 15 minutes of inactivity.

[DivX(R) VOD Code] (DivX(R) VOD Code)

Display the DivX(R) registration code.

≡ Note

- Enter this DivX registration code when you rent or purchase a video from <http://vod.divx.com/>. The DivX videos rented or purchased through the DivX® VOD (Video On Demand) service can be played only on the device to which it is registered.

Video setup

On the **[Video]** (Video) page, you can set the following options:

[TV System] (TV System)

Change this setting if the video is not displayed correctly. By default, this setting matches the most common setting for TVs in your country.

- **[PAL]** (PAL) - For TV with PAL color system.
- **[Multi]** (Multi) - For TV that is compatible with both PAL and NTSC.
- **[NTSC]** (NTSC) - For TV with NTSC color system.

[TV Display] (TV Display)

The TV format determines the aspect ratio of display according to the type of TV you have connected.



- **[4:3 Pan Scan]** (4:3 Pan Scan) – For 4:3 screen TV: full-height display with the trimmed sides.
- **[4:3 Letter Box]** (4:3 Letter Box) – For 4:3 screen TV: wide-screen display with black bars on the top and bottom of the screen.
- **[16:9]** (16:9 Wide Screen) – For wide-screen TV: display ratio 16:9.

[Picture Setting] (Picture Setting)

Select a predefined set of picture color settings.

- **[Standard]** (Standard) – Original color setting.
- **[Bright]** (Bright) – Vibrant color setting.
- **[Soft]** (Soft) – Soft color setting.
- **[Personal]** (Personal) – Customizes the color setting. Set the level of brightness, contrast, tint, and color saturation, and then press **OK**.


[HD JPEG] (HD JPEG)

Enjoy untouched and uncompressed JPEG pictures at its original resolution when you connect this product and the TV with an HDMI cable.

- **[On]** (On) - Display high definition picture.
- **[Off]** (Off) - Display standard picture.

[HDMI Setup] (HDMI Setup)

When you connect this apparatus and TV with an HDMI cable, select the best HDMI video setting that your TV supports.

- **[Resolution]** (Resolution) – Select a resolution for high definition videos.
- **[HDMI Deep Color]** (HDMI Deep Color) – Create vivid images with more color details when the video content is recorded in Deep Color and the TV supports this feature.
- **[Wide Screen Format]** (Wide Screen Format) – Select a display format for wide screen videos.
- **[EasyLink Setup]** (EasyLink Setup) – This unit supports Philips EasyLink which uses the HDMI CEC (Consumer Electronics Control) protocol. You can use a single remote control to control EasyLink compliant devices that are connected through HDMI.
 - **[EasyLink]** (EasyLink) - Enable or disable the EasyLink feature.
 - **[One Touch Play]** (One Touch Play) - After you enable this feature, the connected HDMI CEC TV automatically switches to the HDMI input channel when you play a disc.
 - **[One Touch Standby]** (One Touch Standby) - After you enable this feature, you can press and hold  on the remote control of this unit to switch all connected HDMI CEC devices to standby mode simultaneously.
 - **[System Audio Control]** (System Audio Control) – When you play audio that is routed from the connected devices, this unit switches to the corresponding audio source automatically. After you enable this feature, proceed to **[Audio Input Mapping]** to scan and map all the connected devices.

- **[Audio Input Mapping]** (Audio Input Mapping) - When you map the audio input correctly, this unit switches to the audio from the played device automatically.

Note

- You must turn on the HDMI CEC operations on the TV/devices before you can enjoy the EasyLink controls. See the TV/devices manual for details.
- Philips does not guarantee 100% interoperability with all HDMI CEC compliant devices.

Audio setup

On the **[Audio]** (Audio) page, you can set the following options:



[HDMI Audio] (HDMI Audio)

Select the HDMI audio setting when you connect this product and the TV with an HDMI cable.

- **[On]** (On) - Allow audio output through the TV and the speaker system. If the audio format on the disc is not supported, it will be downmixed to two-channel sound (linear-PCM).
- **[Off]** (Off) - Disable audio output from the TV. The sound is only output through the speaker system.

[Audio Sync] (Audio Sync)

Set the delay time for audio output when you play a video disc.

-
1. Press **OK**.
 2. Press   to set the volume.
 3. Press **OK** to confirm and exit.
-

[Sound Mode] (Sound Mode)

Turn off or select your preferred sound mode.

- **[Original]** (Original)
- **[Movie Mode]** (Movie Mode)
- **[Music Mode]** (Music Mode)
- **[Gaming]** (Gaming)
- **[News]** (News)

[Night Mode] (Night Mode)

Make loud sound level softer and soft sound level louder so that you can watch the DVD movies at a low volume, without disturbing others.

- **[On]** (On) – enjoy quiet viewing at night (DVDs only).
- **[Off]** (Off) – enjoy surround sound with its full dynamic range.

Preferences

On the **[Preference]** (Preference) page, you can set the following options:

[Audio] (Audio)

Select the preferred audio language for disc play.

[Subtitle] (Subtitle)

Select the preferred subtitle language for disc play.

[Disc Menu] (Disc Menu)

Select the preferred disc menu language.

**Note**

- If the language you have set is not available on the disc, the disc uses its own default language.
- For some discs, the subtitle/audio language can only be changed from the disc menu.

[Parental Control] (Parental Control)

Restrict access to discs that are unsuitable for children. These types of discs must be recorded with ratings.

-
- 1) Press **OK**.
 - 2) Select a rating level, and then press **OK**.
 - 3) Press the numeric keys to enter the password.
-

**Note**

- Rated discs above the level you set in **[Parental Control]** (Parental Control) require a password to be played.
- The ratings are country-dependent. To allow all discs to play, select **[8 Adult]** (8 Adult).
- Some discs have ratings printed on them but are not recorded with ratings. This function has no effect on such discs.

[PBC] (PBC)

Play VCD interactively according to the menu screen.

- **[On]** (On): the menu screen is displayed.
- **[Off]** (Off): normal play is resumed.

[Password] (Password)

This setting allows you to change the password for parental control. The default password is 000000.

-
- 1) Press the numeric keys to enter '000000' or your last set password at **[Old Password]** (Old Password) field.
 - 2) Enter the new password at **[New Password]** (New Password) field.
 - 3) Enter the new password again at **[Confirm PWD]** (Confirm PWD) field.
 - 4) Press **OK** to exit the menu.
-

**Note**

- If you forget the password, enter '000000' before you set a new password.

[DivX Subtitle] (DivX Subtitle)

Select a character set that supports the DivX subtitle.

**Note**

- Ensure that the subtitle file has the exact same file name as the movie file. If for example the file name of the movie is 'Movie.avi', and then you will need to name the text file 'Movie.sub' or 'Movie.srt'.

[Version Info] (Version Information)

Display the software version of this device.

[Default] (Default)

Reset all the settings to factory default, except for the password and parental settings.

10 Product information

Note

- Product information is subject to change without prior notice.

Specifications

Amplifier

Maximum Output Power	100 W
Frequency Response	60 Hz - 16 kHz; ± 3 dB
Signal to Noise Ratio	≥ 70 dB
Total Harmonic Distortion	<1%
Aux Input	1V RMS

Speakers

Speaker Impedance	6 ohm
Speaker Driver	3.5" + 20 mm
Sensitivity	>84 dB/m/W

Tuner (FM)

Tuning Range	87.5-108 MHz
Tuning grid	50 KHz
Sensitivity	
- Mono, 26dB S/N Ratio	<22 dBf
- Stereo, 46dB S/N Ratio	<45 dBf
Search Selectivity	<30 dBf
Total Harmonic Distortion	<2 %
Signal to Noise Ratio	>45 dB

USB

USB Direct Version	2.0 full speed
USB 5V Power	≤ 500 mA

Disc

Laser Type	Semiconductor
Disc Diameter	12 cm/8 cm
Video Decoding	MPEG-1 / MPEG-2 / DivX
Video DAC	12 Bits
Signal System	PAL / NTSC
Video Format	4:3 / 16:9
Video S/N	>57 dB
Audio DAC	24 Bits / 96 kHz
Total Harmonic Distortion	<1% (1 kHz)
Frequency Response	4 Hz - 20 kHz (44.1 kHz) 4 Hz - 22 kHz (48 kHz) 4 Hz - 24 kHz (96 kHz)
Frequency Response	60 Hz - 16 kHz; ± 3 dB
S/N Ratio	≥ 77 dBA

General information

AC power	100-240 V, 50/60 Hz
Operation Power Consumption	35 W
Eco Standby Power Consumption	<0.5 W
Dimensions	
- Main Unit (W x H x D)	200 x 120 x 243 mm
- Speaker Box (W x H x D)	160 x 243 x 206 mm
Weight	
- Main Unit	1.6 kg
- Speaker Box	2.1 x 2 kg

Supported disc formats

- Digital Video Discs (DVDs)
- Video CDs (VCDs)
- SuperVideo CDs (SVCDs)
- Digital Video Discs + Rewritable (DVD+RW)
- Compact Discs (CDs)
- Picture (Kodak, JPEG) files on CDR(W)
- DivX(R) disc on CD-R(W):
- DivX 3.11, 4.x and 5.x

Supported MP3-CD formats:

- ISO 9660
- Max. title/album name: 12 characters
- Max. title number plus album: 255.
- Max. nested directory: 8 levels.
- Max. album number: 32.
- Max. MP3 track number: 999.
- Supported sampling frequencies for MP3 disc: 32 kHz, 44.1 kHz, 48 kHz.
- Supported Bit-rates of MP3 disc are: 32, 64, 96, 128, 192, 256 (kbps).
- The following formats are not supported:
 - Files like *.VMA, *.AAC, *.DLF, *.M3U,
 - *.PLS, *.WAV
 - Non-English Album/Title name
 - Discs recorded in Joliet format
 - MP3 Pro and MP3 with ID3 tag

Supported formats:

- USB or memory file format: FAT12, FAT16, FAT32 (sector size: 512 bytes)
- MP3 bit rate (data rate): 32-320 Kbps and variable bit rate
- Directory nesting up to a maximum of 8 levels
- Number of albums/ folders: maximum 99
- Number of tracks/titles: maximum 999
- ID3 tag v2.0 or later
- File name in Unicode UTF8 (maximum length: 32 bytes)

Unsupported formats:

- Empty albums: an empty album is an album that does not contain MP3/WMA files, and will not be shown in the display.
- Unsupported file formats are skipped. For example, word documents (.doc) or MP3 files with extension .dlf are ignored and not played.
- WMA, AAC, WAV, PCM audio files
- DRM protected WMA files (.wav, .m4a, .m4p, .mp4, .aac)
- WMA files in Lossless format

USB playability information

Compatible USB devices:

- USB flash memory (USB2.0 or USB1.1)
- USB flash players (USB2.0 or USB1.1)
- memory cards (requires an additional card reader to work with this unit)

11 Troubleshooting



Warning

- Never remove the casing of this device.

To keep the warranty valid, never try to repair the system yourself.

If you encounter problems when using this device, check the following points before requesting service. If the problem remains unsolved, go to the Philips Web page (www.philips.com/support). When you contact Philips, make sure that the device is nearby and the model number and serial number are available.

No power

- Make sure that the AC power cord of the device is connected properly.
- Make sure that there is power at the AC outlet.
- As a power-saving feature, the system switches off automatically 15 minutes after track play reaches the end and no control is operated.

No sound or poor sound

- Adjust the volume.
- Check that the speakers are connected correctly.
- Check if the stripped speaker wires are clamped.

Remote control does not work

- Before you press any function button, first select the correct source with the remote control instead of the main unit.
- Reduce the distance between the remote control and the unit.
- Insert the battery with its polarities (+/- signs) aligned as indicated.
- Replace the battery.
- Aim the remote control directly at the sensor on the front of the unit.

No disc detected

- Insert a disc.
- Check if the disc is inserted upside down.
- Wait until the moisture condensation at the lens has cleared.
- Replace or clean the disc.
- Use a finalized CD or correct format disc.

Disc does not play

- Insert a readable disc with the label side facing you.
- Check the disc type, color system and regional code. Check for any scratches or smudges on the disc.
- Press **⬆** to exit the system setup menu.
- Disable the password for parental control or change the rating level.
- Moisture has condensed inside the system. Remove the disc and leave the system turned on for about an hour. Disconnect and reconnect the AC power plug, and then turn on the system again.

No picture

- Check the video connection.
- Turn on the TV to the correct Video-In channel.

Black and white or distorted picture

- The disc does not match the TV color system standard (PAL/NTSC).
- Sometimes a slight picture distortion may appear. This is not a malfunction.
- Clean the disc.

The aspect ratio of the TV screen cannot be changed even though you have set the TV display format.

- The aspect ratio is fixed on the loaded DVD disc.
- The aspect ratio may not be changed for some TV systems.

DivX video files cannot be played.

- Ensure that the DivX video file is complete.
- Ensure that the file extension is correct.
- Due to Digital Rights issue, the DRM-protected video files cannot be played through an analog video connection (e.g. composite, component and scart). Transfer the video content onto the Disc Media and play these files.

Audio or subtitle languages cannot be set

- The disc is not recorded with sound or subtitles in multiple languages.
- The audio or subtitle language setting is prohibited on the disc.

Cannot display some files in USB device

- The number of folders or files in the USB device has exceeded a certain limit. This phenomenon is not a malfunction.
- The formats of these files are not supported.

USB device not supported

- The USB device is incompatible with the unit. Try another one.

Poor radio reception

- Increase the distance between the apparatus and your TV or VCR.
- Fully extend the FM antenna.
- Connect an outdoor FM antenna instead.

Timer does not work

- Set the clock correctly.
- Switch on the timer.

Clock/timer setting erased

- Power has been interrupted or the power cord has been disconnected.
- Reset the clock/timer.

12 Notice

Any changes or modifications made to this device that are not expressly approved by WOOX Innovations may void the user's authority to operate the equipment.



This product complies with the radio interference requirements of the European Community.



Your product is designed and manufactured with high quality materials and components, which can be recycled and reused.



When this crossed-out wheeled bin symbol is attached to a product it means that the product is covered by the European Directive 2002/96/EC.

Please inform yourself about the local separate collection system for electrical and electronic products.

Please act according to your local rules and do not dispose of your old products with your normal household waste. Correct disposal of your old product helps to prevent potential negative consequences for the environment and human health.



Your product contains batteries covered by the European Directive 2006/66/EC, which cannot be disposed with normal household waste. Please inform yourself about the local rules on separate collection of batteries

because correct disposal helps to prevent negative consequences for the environmental and human health.

Environmental information

All unnecessary packaging has been omitted. We have tried to make the packaging easy to separate into three materials: cardboard (box), polystyrene foam (buffer) and polyethylene (bags, protective foam sheet.)

Your system consists of materials which can be recycled and reused if disassembled by a specialized company. Please observe the local regulations regarding the disposal of packaging materials, exhausted batteries and old equipment.



This item incorporates copy protection technology that is protected by U.S. patents and other intellectual property rights of Rovi Corporation. Reverse engineering and disassembly are prohibited.



The terms HDMI and HDMI High-Definition Multimedia Interface, and the HDMI Logo are trademarks or registered trademarks of HDMI Licensing LLC in the United States and other countries.



'DVD Video' is a trademark of DVD Format/ Logo Licensing Corporation.



Manufactured under license from Dolby Laboratories.

"Dolby" and the double-D symbol are trademarks of Dolby Laboratories.

"Dolby" and the double-D symbol are trademarks of Dolby Laboratories.

DIVX™

ABOUT DIVX VIDEO: DivX® is a digital video format created by DivX, LLC, a subsidiary of Rovi Corporation. This is an official DivX Certified® device that plays DivX video. Visit divx.com for more information and software tools to convert your files into DivX videos.

ABOUT DIVX VIDEO-ON-DEMAND: This DivX Certified® device must be registered in order to play purchased DivX Video-on-Demand (VOD) movies. To obtain your registration code, locate the DivX VOD section in your device setup menu. Go to vod.divx.com for more information on how to complete your registration.

DivX®, DivX Certified® and associated logos are trademarks of Rovi Corporation or its subsidiaries and are used under license.

This apparatus includes this label:



Note

- The type plate is located on the back of the device.



Specifications are subject to change without notice.

2013 © WOOX Innovations Limited. All rights reserved.

This product was brought to the market by WOOX Innovations Limited or one of its affiliates, further referred to in this document as WOOX Innovations, and is the manufacturer of the product. WOOX Innovations is the warrantor in relation to the product with which this booklet was packaged. Philips and the Philips Shield Emblem are registered trademarks of Koninklijke Philips N.V.

MCD5110_UM_12_V3.0



Free Manuals Download Website

<http://myh66.com>

<http://usermanuals.us>

<http://www.somanuals.com>

<http://www.4manuals.cc>

<http://www.manual-lib.com>

<http://www.404manual.com>

<http://www.luxmanual.com>

<http://aubethermostatmanual.com>

Golf course search by state

<http://golfingnear.com>

Email search by domain

<http://emailbydomain.com>

Auto manuals search

<http://auto.somanuals.com>

TV manuals search

<http://tv.somanuals.com>