

## Mini Hi-Fi System



visit our website

[www.audio.philips.com](http://www.audio.philips.com)

to download latest UPDATES of USB PC Link Driver  
MusicMatch Jukebox softwares and FAQs.



# PHILIPS

Es necesario que lea cuidadosamente su instructivo de manejo.

|  |  |   |
|--|--|---|
|   | <b>PRECAUCIÓN - ADVERTENCIA</b>  |  |
|  | <b>No abrir, riesgo de choque eléctrico</b>                                      |   |
|  | <b>ATENCIÓN</b>  |   |
|  | <b>Verifique que el voltaje de alimentación sea el requerido para su aparato</b> |   |
| <b>Para evitar el riesgo de choque eléctrico, no quite la tapa.<br/>En caso de requerir servicio, diríjase al personal calificado.</b> |  |   |

Descripción: **Minisistema de Audio**  
Modelo : **FW-C577/21**  
Alimentación: **110-127 / 220-240V~; 50-60 Hz**  
Consumo: **175 W**  
Importador: **Philips Mexicana, S.A. de C.V.**  
Domicilio: **Av. La Palma No. 6  
Col. San Fernando La Herradura  
Huixquilucan**  
Localidad y Tel: **Edo. de México C.P. 52784  
Tel. 52 69 90 00**  
Exportador: **Philips Electronics HK, Ltd.**  
País de Origen: **China**  
N° de Serie: \_\_\_\_\_

**LEA CUIDADOSAMENTE ESTE INSTRUCTIVO  
ANTES DE USAR SU APARATO.**

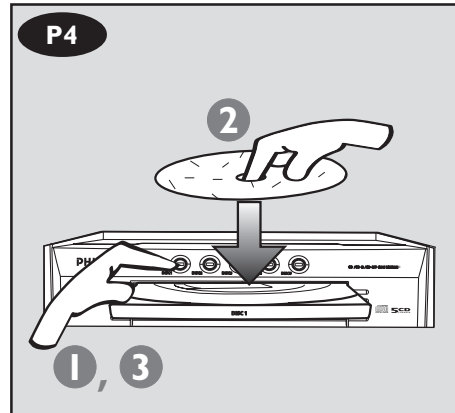
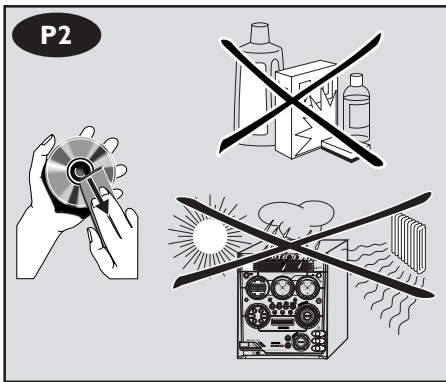
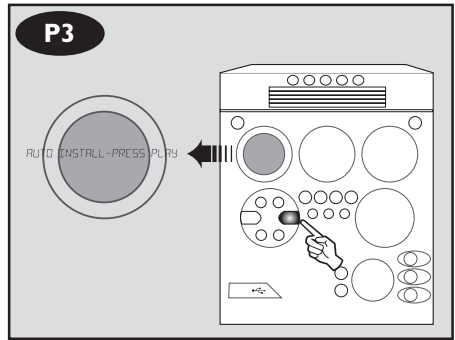
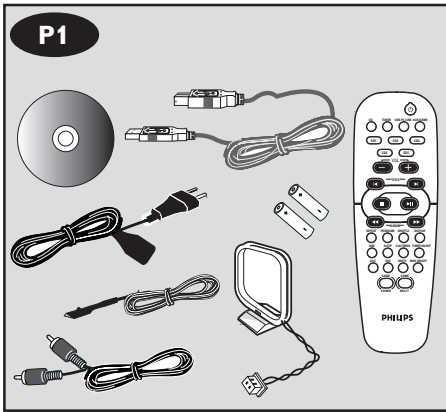
## AVISO IMPORTANTE

*Philips Mexicana, S.A. de C.V. no se hace responsable por daños o desperfectos causados por:*

- Maltrato, descuido o mal uso, presencia de insectos o roedores (cucarachas, ratones etc.).*
- Cuando el aparato no haya sido operado de acuerdo con el instructivo del uso, fuera de los valores nominales y tolerancias de las tensiones (voltaje), frecuencia (ciclaje) de alimentación eléctrica y las características que deben reunir las instalaciones auxiliares.*
- Por fenómenos naturales tales como: temblores, inundaciones, incendios, descargas eléctricas, rayos etc. o delitos causados por terceros (choques asaltos, riñas, etc.).*

## CAUTION

*Use of controls or adjustments or performance of procedures other than herein may result in hazardous radiation exposure or other unsafe operation.*





English ..... 6

Français ..... 27

Español ..... 48

中文 ..... 69

English

Français

Español

中文

## Energy Star

As an ENERGY STAR® Partner, Philips has determined that this product meets the ENERGY STAR® guidelines for energy efficiency.



---

## General Information

|                                   |   |
|-----------------------------------|---|
| Supplied accessories .....        | 7 |
| Environmental information .....   | 7 |
| Care and safety information ..... | 7 |

---

## Functional Overview

|  |     |
|--|-----|
| Main unit and remote control .....                 | 8–9 |
| Control buttons available on the remote only ..... | 9   |

---

## Connections

|   |    |
|---|----|
| Step 1: Connecting FM/AM antennas .....                   | 11 |
| Step 2: Connecting the speakers .....                     | 11 |
| Step 3: Connecting to PC .....                            | 11 |
| Step 4: Connecting to game console .....                  | 11 |
| Step 5: Connecting the AC power cord .....                | 12 |
| Step 6: Inserting batteries into the remote control ..... | 12 |
| Using the remote control to operate the system .....      | 12 |

---

## Gameport Operations

|                              |    |
|------------------------------|----|
| About Gameport .....         | 13 |
| Preparation before use ..... | 13 |
| Start operating .....        | 13 |

---

## USB PC Link

|                                      |    |
|--------------------------------------|----|
| Quick Setup Guide .....              | 14 |
| PC system requirement .....          | 14 |
| Install MusicMatch software .....    | 14 |
| Enable digital CD audio output ..... | 15 |
| Connecting USB PC Link .....         | 15 |

---

## Basic Operations

|  |    |
|--|----|
| Switching on/off .....                       | 16 |
| Switching to active mode .....               | 16 |
| Switching to Eco Power standby mode .....    | 16 |
| Switching to standby mode (view clock) ..... | 16 |
| Demonstration mode .....                     | 16 |
| Setting the clock .....                      | 16 |
| Dimming system's display screen .....        | 17 |
| Volume control .....                         | 17 |
| Sound control .....                          | 17 |
| MAX sound .....                              | 17 |
| Digital Sound Control .....                  | 17 |
| Virtual Ambience Control .....               | 17 |
| Dynamic Bass Boost .....                     | 17 |

---

## Disc Operations

|   |       |
|---|-------|
| Playable discs .....                                | 18    |
| Loading discs .....                                 | 18    |
| Basic playback controls .....                       | 18–19 |
| Repeat and Shuffle .....                            | 19    |
| Repeat play .....                                   | 19    |
| Random play .....                                   | 19    |
| Programming the disc tracks .....                   | 19    |
| Checking the programme .....                        | 20    |
| Playing a disc without clearing the programme ..... | 20    |
| Clearing the programme .....                        | 20    |

---

## Tuner Operations

|  |    |
|--|----|
| Tuning to radio stations .....         | 21 |
| Presetting radio stations .....        | 21 |
| Using the Plug and Play .....          | 21 |
| Automatic presetting .....             | 21 |
| Manual presetting .....                | 21 |
| Selecting a preset radio station ..... | 21 |
| Deleting a preset radio station .....  | 21 |
| Changing tuning grid .....             | 22 |

---

## Timer Operations

|   |    |
|---|----|
| Timer setting .....                     | 23 |
| Activating/Deactivating the timer ..... | 23 |
| Sleep timer setting .....               | 24 |

---

## Other Connection

|                                       |    |
|---------------------------------------|----|
| Listening to an external source ..... | 24 |
|---------------------------------------|----|

---

## Specifications

---

## Troubleshooting

**Refer to the type plate on the rear or bottom of the system for identification and supply ratings.**

## Supplied accessories *(page 3 – P1)*

- USB PC LINK software installer CD-ROM
- USB cable
- Remote control and two AA batteries.
- AM loop antenna
- FM wire antenna
- Video cinch cable (yellow)
- Mains plug adaptor (for version /21 only)
- AC power cord

## Environmental information

All unnecessary packaging has been omitted. We have tried to make the packaging easy to separate into three materials: cardboard (box), polystyrene foam (buffer) and polyethylene (bags, protective foam sheet).

Your system consists of materials which can be recycled and reused if disassembled by a specialised company. Please observe the local regulations regarding the disposal of packaging materials, exhausted batteries and old equipment.

## Care and safety information

*(page 3 – P2)*

### Avoid high temperatures, moisture, water and dust

– Do not expose the system, batteries or discs to humidity, rain, sand or excessive heat (caused by heating equipment or direct sunlight). Always keep the disc tray closed to avoid dust on the lens.

### Avoid condensation problem

– The lens may cloud over when the system is suddenly moved from cold to warm surroundings, making it impossible to play a disc. Leave the system in the warm environment until the moisture evaporates.

### Do not block the vents

– In a cabinet, allows about 10cm (4 inches) of free space all around the system for adequate ventilation.

### Care of disc

- To clean a CD, wipe it in a straight line from the centre towards the edge using a soft, lint-free cloth. A cleaning agent may damage the disc!
- Write only on the printed side of a CDR(W) and only with a soft felt-tipped pen.
- Handle the disc by its edge, do not touch the surface.

### Care of the cabinet

– Use a soft cloth slightly moistened with a mild detergent solution. Do not use a solution containing alcohol, spirits, ammonia or abrasives.

### Finding a suitable location

– Place the system on a flat, hard, and stable surface.

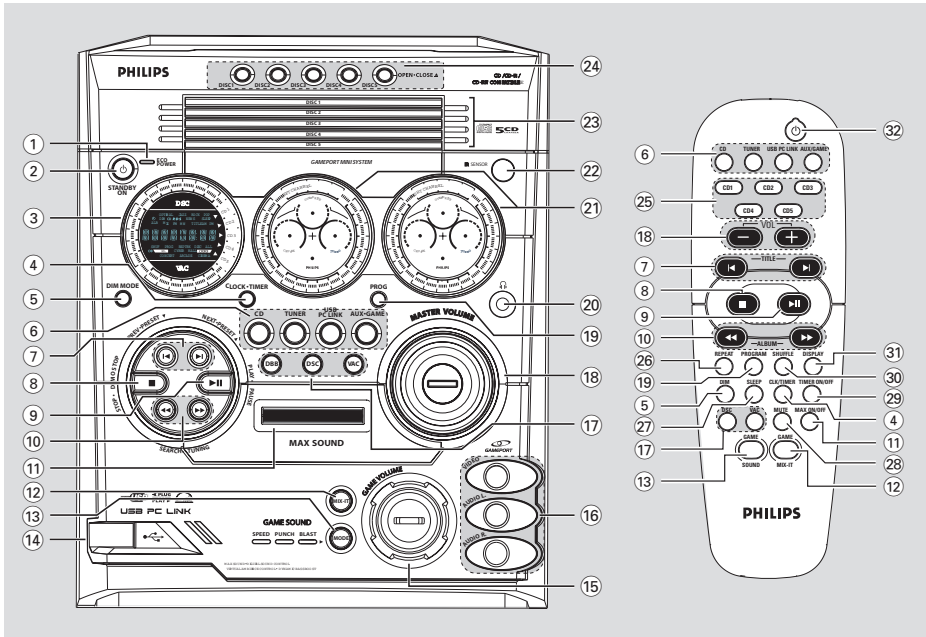
### Built-in safety circuit

– Under extreme conditions, this system may switch to standby mode automatically. If this happens, let the system cool down before reusing it.

### Power saving

– This system is designed to use less than 1W of electricity when switches to Eco Power standby. Disconnect the AC power cord from the power outlet when not in use.

# Functional Overview



## Main unit and remote control

### ① ECO POWER indicator

- Lights up when the system is in Eco Power standby mode.

### ② STANDBY ON

- Switches to Eco Power standby mode or turns on the system.
- \*Switches to standby mode.

### ③ Display screen

### ④ CLOCK•TIMER (CLK/TIMER)

- \*Enters clock or timer setting mode.

### ⑤ DIM MODE (DIM)

- Turns on/off the dim mode.

### ⑥ CD / TUNER / USB PC LINK / AUX•GAME

- Selects the relevant active mode.
- CD: toggles between DISC 1~5.
- TUNER: toggles between FM and MW band.
- AUX•GAME: toggles between AUX and GAMEPORT mode.

### ⑦ PREV•PRESET ▼ () / NEXT•PRESET ▲ (

- CD: selects a track.
- TUNER: selects a preset radio station.
- CLOCK: sets the minutes.
- USB PC LINK: selects a track from the playlist.

### ⑧ STOP•DEMO STOP

- Exits an operation.
- CD: stops playback or clears a programme.
- TUNER: \*erases a preset radio station.
- USB PC LINK: stops playback.

(only on the main unit)

- \*Turns on/off the demonstration mode.

\* = Press and hold the button for more than two seconds.



## 9 PLAY·PAUSE ► II

- **CD:** starts/pauses playback.
- **USB PC LINK:** starts/pauses playback.

(only on the main unit)

**TUNER:** \*enters Plug & Play mode and/or starts preset radio station installation.

## 10 SEARCH·TUNING (◀▶▶▶)

- **CD:** \*searches backward/forward.
- **TUNER:** tunes the radio frequency up/down.
- **CLOCK:** sets the hours.
- **USB PC LINK:** \*searches backward/forward.

## 11 MAX SOUND (MAX ON/OFF)

- Turns on/off the optimal mix of various sound features.

## 12 MIX IT (GAME MIX IT)

- Mixes the game sound with your favourite music from one of these music source (CD, TUNER, USB PC LINK or AUX).

## 13 MODE (GAME SOUND)

- Selects different type of equaliser setting for Gameport (SPEED, PUNCH or BLAST).

- 14 Connect the USB cable between the system and PC's USB port.

## 15 GAME VOLUME

- Adjusts the game's output volume level.

## 16 VIDEO

- Use a video cable to connect to your game console's video output.

### AUDIO L. / AUDIO R.

- Use a audio cable to connect to your game console's left/right audio output.

## 17 DBB

- Selects different type of bass boost level settings (DBB 1, DBB 2, DBB 3 or DBB OFF).

### DSC

- Selects different type of preset sound equaliser settings (OPTIMAL, JAZZ, ROCK or POP).

### VAC

- Selects different type of environment ambience-based equaliser settings (HALL, CINEMA, CONCERT, CYBER or ARCADE).

## 18 MASTER VOLUME (VOL + -)

- Adjusts the volume level.

## 19 PROG (PROGRAM)

- **CD:** starts or confirms tracks programming.
- **TUNER:** starts \*automatic/manual preset programming.
- **CLOCK:** selects 12- or 24-hour clock display.

## 20

- Plug in the headphones jack. The speakers output will be cancelled.

## 21 VU meters

- Indicates signal strength of left/right channel.

## 22 iR SENSOR

- Point the remote control towards this sensor.

## 23 Disc trays (1~5)

## 24 OPEN·CLOSE ▲ (DISC 1~5)

- Opens/closes the individual disc tray.

### Control buttons available on the remote only

## 25 CD 1~5

- Selects a disc tray to playback.

## 26 REPEAT

- Repeats a track/disc/all discs/all programmed tracks.

## 27 SLEEP

- Sets the sleep timer function.

## 28 MUTE

- Mutes or restores the volume.

## 29 TIMER ON/OFF

- Turns on/off the timer function.

## 30 SHUFFLE

- Turns on/off the random play mode.

## 31 DISPLAY

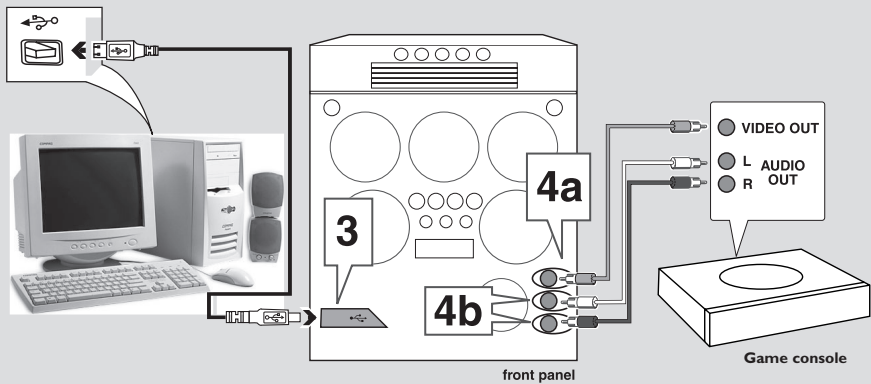
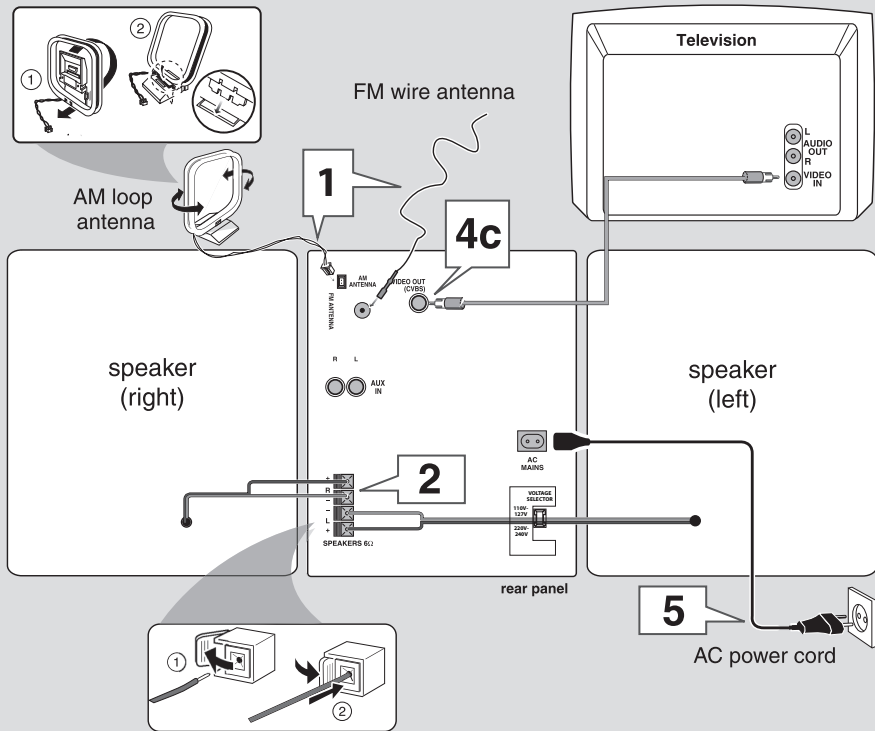
- Displays disc remaining playback time.

## 32

- Switches to Eco Power standby mode.
- \*Switches to standby mode.

\* = Press and hold the button for more than two seconds.

# Connections



**WARNING!**

- Please note that the voltage selector located at the rear of this system is preset at 220V from the factory. For countries that operate at 110V-127V, please adjust to 110V-127V before you switch on the system.
- Use only the supplied speakers. The combination of the main unit and speakers provide the best sound. Using other speakers can damage the unit and sound quality will be negatively affected.
- Never make or change connections with the power switched on.
- Connect the AC power cord to the power outlet only after you have finished hooking up everything.

**Step 1: Connecting FM/AM antennas**

- Place the AM loop antenna on a shelf or attach it to a stand or wall.
- Extend the FM antenna and fix its ends to the wall.
- Adjust the position of the antennas for optimal reception.
- Position the antennas as far as possible from a TV, VCR or other radiation source to prevent unwanted noise.
- For better FM stereo reception, connect external FM antenna.

**Step 2: Connecting the speakers**

Connect the speaker wires to the SPEAKERS terminals, right speaker to "R" and left speaker to "L", coloured (marked) wire to "+" and black (unmarked) wire to "–". Fully insert the stripped portion of the speaker wire into the terminal as shown.

*Notes:*

- Ensure that the speaker cables are correctly connected. Improper connections may damage the system due to short-circuit.
- Do not connect more than one speaker to any one pair of + / – speaker terminals.

**Step 3: Connecting to PC**

Use the supplied USB cable to connect the system to your personal computer's USB port. After installed the USB PC LINK application software onto your PC, you are able to playback your music collection via the system (refer to "USB PC Link").

**Step 4: Connecting to game console****IMPORTANT!**

**Gameport inputs are solely for game console only.**

- a. Use the game console's video cable (not supplied) to connect its video output to the GAMEPORT-VIDEO terminal.
- b. Use the game console's audio cables (not supplied) to connect its audio outputs to the GAMEPORT-AUDIO L. / AUDIO R. terminals.
- c. Use a video cable (yellow) to connect the VIDEO OUT terminal to the video input on the TV for viewing.

*Notes:*

- On the TV, the Video Input jack is usually yellow and might be labeled A/V In, CVBS, Composite or Baseband.
- To avoid magnetic interference, do not position the front speakers too close to your TV.

**Helpful Hint:**

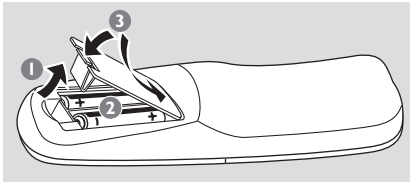
For optimal enjoyment of your Gaming Experience, it is advisable that you avoid connecting the TV's AUDIO OUT to the audio system's AUX IN (R/L) terminals.

If you wish to listen to your favorite movies/TV programmes through the Philips Mini System, please disconnect the Game Console connection on the front of the set to avoid experiencing any unwanted noise.

## Step 5: Connecting the AC power cord

"AUTO INSTALL – PRESS PLAY" may appear on the display panel when the AC power cord is plugged into the power outlet for the first time. Press ►|| on the main unit to store all available radio stations (page 3 – P3) or press ■ to exit (refer to "Tuner Operations").

## Step 6: Inserting batteries into the remote control



- 1 Open the battery compartment cover.
- 2 Insert two batteries type R06 or AA, following the indications (+ –) inside the compartment.
- 3 Close the cover.

### Using the remote control to operate the system

- 1 Aim the remote control directly at the remote sensor (iR) on the main unit.
- 2 Select the source you wish to control by pressing one of the source select keys on the remote control (for example CD, TUNER).
- 3 Then select the desired function (for example ►||, ◀, ▶).

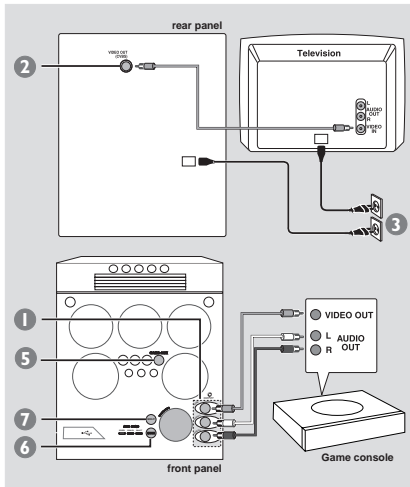
### CAUTION!

- Remove batteries if they are exhausted or will not be used for a long time.
- Do not use old and new or different types of batteries in combination.
- Batteries contain chemical substances, so they should be disposed of properly.

## About Gameport

Gameport allows you to connect your game console to this mini system which enables you to enjoy a total game immersion experience by having powerful sound output.

## Preparation before use



- 1 Connect your game console's video and audio output to the GAMEPORT video and audio inputs respectively (refer to "Connections – Connecting to game console").
- 2 Connect your TV's video input to the **VIDEO OUT (CVBS)** on the rear panel.
- 3 Connect all the AC power cord to the power outlet.

## Start operating

- 4 Turn on the TV and set to the correct video-in channel.  
The TV's video input channel may be called AUX(iliary) IN, AUDIO/VIDEO (A/V) IN, EXT 1, etc. These channels are often near channel 00 on your TV. Or, your TV remote control may have a button or switch that chooses different video modes. See your TV manual for details.

- 5 Press **AUX-GAME** until "GAMEPORT" is displayed.
- 6 Press **MODE** (or **GAME SOUND** on remote) to select the type of sound setting that best suit the game : **SPEED, PUNCH, BLAST** or **OFF**.
- 7 If you like to mix your game sound to your favourite music, press **MIX-IT** to select the desired music source : **CD, TUNER, USB PC LINK, AUX** or **OFF**.  
CD → "MIX-CD"  
TUNER → "MIX-TU"  
USB PC LINK → "MIX-USB"  
AUX → "MIX-AUX"  
OFF → "MIX-OFF"
- 8 If necessary, start playback your chosen mixer source.
- 9 Start playing your favourite game.

### To adjust the game console's volume level

- Adjust **GAME VOLUME**.

### To change the mixer source

- Press **MIX-IT**.

### To control the current active mixer source

- Press the respective source button (for example, CD, TUNER) on the remote control, then select the desired function (for example ▶, ◀, ▶▶).

For example, if CD is the mixer source and to change the disc tray, you have to press CD, then press CD 1~5 to select the desired disc tray.

#### Notes:

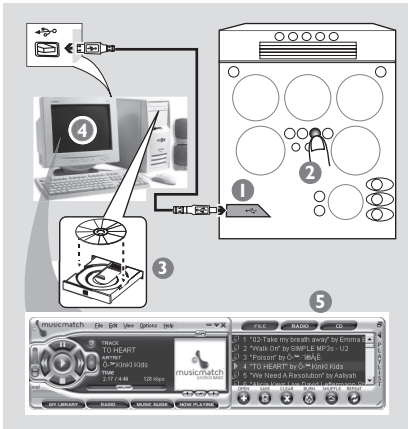
- You can only activate **GAME VOLUME** and **MIX-IT** while in game source mode.
- If your game console is switched on, the video image will always appear on the TV even though you are not in the gameport mode.

## Quick Setup Guide

### PC system requirement

- Windows 98 **(SE)**/ME/2000/XP
- Intel Pentium MMX200 or higher
- CD-ROM drive
- USB port
- Free hard disk space : 15 MB for the software

### Install MusicMatch software



- 1 Use the supplied USB cable to connect the audio system to your personal computer's USB port.
- 2 Press **USB PC LINK**.
- 3 Turn on the PC and insert the USB PC LINK installer disc (which comes with this product) onto the PC's CD-ROM drive.  
This application software can also be downloaded from "<http://www.audio.philips.com>".

### IMPORTANT!

**Please use this customised MusicMatch software for your USB PC Link application. Remember to un-install all other MusicMatch jukebox software first from your PC system (if available).**

- 4 The installation guide will appear automatically. If it does not, go to the CD-ROM drive in Windows Explorer and double click on the "**USBPCLINK.exe**". Then perform the following steps:
  - First, select your desired language from the list.
  - Then, select "**installer driver**" and follow by "**installer MusicMatch jukebox**".
  - Select other options (Tutorial, Free goodies, FAQ).

#### Note:

– You are advised to read the MusicMatch tutorial before using it for the first time. Make sure the mute function on the PC is deactivated in order to ensure sound output from the Audio System. For optimum performance, the equaliser function in MusicMatch should be set to a low level.

- 5 Launch the "**MUSICMATCH JUKEBOX**" and choose to do one of the followings :

#### To create a "Playlist"

Select "**Open**" button on the MusicMatch Jukebox and simply drag/drop the music tracks from anywhere on your PC into the "**Playlist**" window. Remember to save this "**Playlist**" for future use.

#### To create a music library

A music library of all stored music files available on your PC can be setup by simply select "**add**" function on the MusicMatch Jukebox. Once created, you may then choose to drag/drop any music tracks from this library to a "**Playlist**" for music playback.

#### Note:

– It is not possible to create a playlist from the system's 5 CD changer. If you encounter problem using USB PC LINK, please refer to the FAQ (Frequently Asked Questions) stored in your USB PC LINK installer disc or visit "[www.audio.philips.com](http://www.audio.philips.com)" for latest update on FAQ.

## Enable digital CD audio output

Before playing the CD through your PC's CD-ROM drive, it is necessary to configure your PC's hardware as follows:

### For Windows ME/2000/XP

- 1 Enter the system control panel menu and select :  
"SYSTEM → HARDWARE → DEVICE MANAGER → CD-ROM DRIVES → ACTION-PROPERTIES → PROPERTIES".

OR

### For Windows 98 (SE)

Enter the system control panel menu and select "MULTIMEDIA" and "CD MUSIC".

- 2 Check the 'Enable digital CD audio for this CD-ROM device' setting option is selected (enabled).

Note:

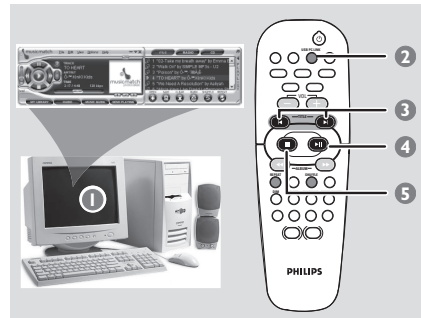
– You may need to refer to your PC's manual for correct configuration.

## Connecting to USB PC LINK

USB PC LINK allows you to playback your music collection from the PC via the powerful amplifier and speakers of this system.

### IMPORTANT!

**Make sure the MusicMatch software has been installed. Refer to "Quick Setup Guide" for USB PC Link.**



- 1 Turn on your computer and launch the "MUSICMATCH JUKEBOX".  
→ The volume level of PC should not be put into mute.
- 2 Press **USB PC LINK**.  
→ If the audio streaming is detected, "CONNECTING" is displayed and the USB indicator will be flashing.  
→ If "NO CONNECTION" is displayed, check the connection between your PC and mini system.
- 3 Press ◀ or ▶ until the desired track in the playlist is highlighted.
- 4 Press ▶|| to start playback.  
→ The track information will appear on the display. The display only supports English characters.  
  
During playback,  
– Press **SHUFFLE** to play all available tracks in the playlist in random order.  
– Press **REPEAT** to repeat playback of all the tracks in the playlist.
- 5 To exit, select another active mode or press ■.

# Basic Operations

## Switching on/off

### Switching to active mode

- Press **CD, TUNER, USB PC LINK** or **AUX•GAME**.

### Switching to Eco Power standby mode

- Press **⏻**.  
→ ECO POWER button lights up.  
→ The display screen will go blank.

### Switching to standby mode (view clock)

- Press and hold **⏻**.  
→ The clock is displayed.  
→ While in standby mode, pressing **CLOCK•TIMER** button will switch the system to Eco Power standby mode.

#### Note:

- Before switching the system to Eco Power standby or standby mode, make sure the demonstration mode has been deactivated.

## Demonstration mode

If the demonstration mode is active, whenever you switch the system to Eco Power standby or standby mode, it will begin showing the various features offered by the system.

### To activate the demonstration

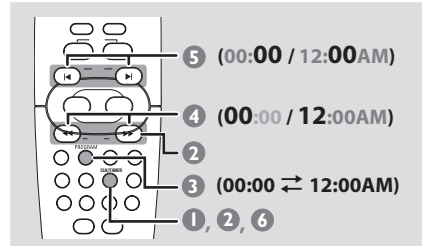
- In Eco Power standby/standby mode, press and hold **■** on the main unit until "DEMO ON" is displayed.

### To deactivate the demonstration

- Press and hold **■** on the main unit until "DEMO OFF" is displayed.

## Setting the clock

The clock can be set in either 12-hour or 24-hour mode ("11:59 PM" or "23:59" for example).



- 1 Press and hold **CLK/TIMER** (or **CLOCK•TIMER** on main unit) until "SELECT CLOCK OR TIMER" is displayed.
- 2 Press **▶** to change the display to "CLOCK" and press **CLK/TIMER (CLOCK•TIMER)** again to confirm.
- 3 Press **PROGRAM (PROG)** repeatedly to change between 12-hour and 24-hour clock mode.
- 4 Press **◀** or **▶** repeatedly to set the hour.
- 5 Press **◀** or **▶** repeatedly to set the minute.
- 6 Press **CLK/TIMER (CLOCK•TIMER)** to store the setting.  
→ The clock will start working.

### To view the clock time in any active mode

- Press **CLK/TIMER (CLOCK•TIMER)** **once**.  
→ The clock is displayed for a few seconds.

#### Notes:

- The clock setting will be erased when the system is disconnected from the power supply.
- The system will exit clock setting mode if no button is pressed within 90 seconds.



## Dimming system's display screen

You can select the desired brightness for the display panel.

- In any active mode, press **DIM MODE** (or **DIM** on remote) repeatedly to turn on/off dim mode.  
→ **DIM** is shown, except for DIM OFF mode.

## Volume control

- Adjust **MASTER VOLUME** (or press **VOL + / -** on remote) to increase or decrease the sound level.  
→ "**VOL MIN**" is the minimum volume level and "**VOL MAX**" is the maximum volume level.

### To switch off the volume temporarily

- Press **MUTE** on the remote.  
→ Playback will continue without sound and "**MUTE**" is displayed.  
→ To restore the volume, press **MUTE** again or increase the volume level.

## Sound control

MAX sound, DSC and VAC sound features cannot be activated on the same time.

While in game mode, all the sound control features are not available for selection, except DBB and Game Sound control.

### MAX sound

MAX sound provides the best mixture of various sound features (DSC, VAC for example).

- Press **MAX SOUND** (or **MAX ON/OFF** on remote).  
→ If activated, the MAX SOUND button lights up. All other sound effects (DSC, VAC or DBB) will be switched off automatically.

### Digital Sound Control

DSC provides a different type of preset sound equaliser setting.

- Press **DSC** repeatedly to select : **OPTIMAL**, **JAZZ**, **ROCK** or **POP**.

### Virtual Ambience Control

VAC provides a different type of environment-based equaliser setting.

- Press **VAC** repeatedly to select : **HALL**, **CINEMA**, **CONCERT**, **CYBER** or **ARCADE**.

### Dynamic Bass Boost

DBB enhances the bass response.

- Press **DBB** repeatedly to select : **DBB 1**, **DBB 2**, **DBB 3** or **DBB OFF**.  
→ Some discs might be recorded in high modulation, which causes a distortion at high volume. If this occurs, switch off DBB or reduce the volume.

### Automatic DSC-DBB and VAC-DBB selection

The best DBB setting is generated automatically for each DSC, VAC or Game Sound selection. You can manually select the DBB setting that best suits your listening environment.

# Disc Operations

## IMPORTANT!

- This system is designed for regular discs. Therefore, do not use any accessories such as disc stabiliser rings or disc treatment sheets, etc., as offered on the market, because they may jam the changer mechanism.
- Do not load more than one disc onto each tray.

## Playable discs

This system is able to play :

- All pre-recorded audio CDs
- All finalised audio CDR and audio CDRW discs



## Loading discs (page 3 – P4)

- 1 Press **OPEN•CLOSE ▲ DISC 1** button on top of the main unit to open disc tray 1.
- 2 Load a disc with the label side facing up. For double-sided discs, load the side you want to play facing up.
- 3 Press **OPEN•CLOSE ▲ DISC 1** button again to close the disc tray.  
→ "READING" is displayed. The selected disc tray, total number of tracks and the playing time will appear on the display.
- 4 Repeat **steps 1~3** for loading discs onto the **disc trays 2~5**.

Notes:

- To ensure good system performance, wait until the disc trays completely read the disc(s) before proceeding.
- Only one tray can be opened at each time. If you open the second tray before closing the first tray, the first tray will automatically close before the second tray opens.

## Basic playback controls

### Load discs (page 3 – P4)

#### To play all discs on the disc trays

- Press **▶||**  
OR

In stop mode, press **CD** to select a disc tray to begin, then press **▶||**

→ All the available discs will play once, then stop.

#### To play the selected disc only

- Press one of the **CD 1~5** on remote.  
→ The selected disc will play once, then stop.

#### To select a desired track

- Press **◀** or **▶** repeatedly until the desired track is displayed.  
→ To skip to the beginning of the current track during playback, press **◀ once**.  
→ During random play (shuffle mode), pressing **◀** will cause the player to skip only to the beginning of the current track.

#### To search for a particular passage during playback

- Press and hold **◀◀** or **▶▶** and release it when the desired passage is located.  
→ During searching, the volume will be reduced.

#### To replace discs without interrupting playback

- Press **OPEN•CLOSE ▲** buttons of the inactive disc trays (refer to "Loading discs"). For example, if currently disc tray 1 is playing, you can replace the discs on disc tray 2~5.

#### To check the disc remaining playing time

- Press **DISPLAY** on the remote.  
→ During random play or programme play, the total remaining time will not be shown.  
→ To restore the display for elapsed playing time, repeat the above.

## To interrupt playback

- Press **▶||**  
→ To resume normal playback, repeat the above.

## To stop playback

- Press **■**.  
→ If the system remains in stop mode for 30 minutes, it will switch to Eco Power standby mode.

## Repeat and Shuffle

You can select and change the various play modes before or during playback.

### Repeat play

- 1 Press **REPEAT** on the remote repeatedly to select :

|     |              |     |              |
|-----|--------------|-----|--------------|
| (A) | REP TRK      | (D) | PROG REP TRK |
| (B) | REP DISC     | (E) | PROG REP ALL |
| (C) | REP DISC ALL |     |              |

- (A) – to repeat playback of the current track.
  - (B) – to repeat playback of the current disc.
  - (C) – to repeat playback of all available discs.
  - (D) – to repeat playback of the current programmed track (only if the programme mode is active)
  - (E) – to repeat playback of all the programmed tracks (only if the programme mode is active)
- 2 To resume normal playback, press **REPEAT** until "OFF" is displayed.

### Random play

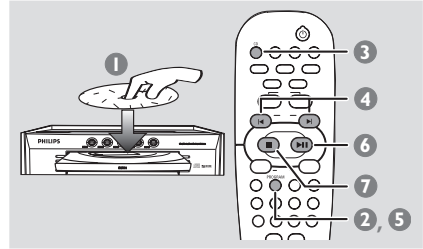
- Press **SHUFFLE** on the remote to turn on/off the shuffling mode.  
→ If activated, **SHUF** is shown and the repeat mode (if any) will be cancelled.  
→ All the available discs or programmed tracks (if programme is active) will be played in random order.

Note:

- Pressing the **OPEN•CLOSE** button will cancel all repeat and shuffling modes.

## Programming the disc tracks

Programming tracks is possible when playback is stopped. Up to 40 tracks can be stored in the memory in any order.



- 1 Load the desired discs on the disc trays (refer to "Loading discs").
- 2 Press **PROGRAM (PROG)** to start programming.  
→ **PROG** starts flashing.
- 3 Press **CD** or one of the **CD 1-5** buttons to select a disc.
- 4 Press **◀** or **▶** repeatedly to select the desired track.
- 5 Press **PROGRAM (PROG)** to store.
- Repeat **steps 3-5** to select other discs and store the tracks.  
→ Skip step 3 if you are selecting tracks from the same disc.  
→ If you attempt to programme more than 40 tracks, "PROGRAM FULL" is displayed.
- 6 To start programme play, press **▶||**
- 7 To stop playback or to end the programming, press **■** once.  
→ **PROG** stays and the programme mode remains active.

Notes:

- If the total playing time reached 100 minutes or if one of the programmed tracks has a number greater than 30, then "----:--" is displayed instead of the total playing time.
- The system will exit programming mode if no button is pressed within 20 seconds.

# Disc Operations

## Checking the programme

- 1 Stop playback and press ◀ or ▶ repeatedly.
- 2 Press ■ to exit.

OR

Press ▶|| to start playback from the current programmed track

## Playing a disc without clearing the programme

- Press one of the **CD 1~5** buttons on the remote to select a disc for playback.  
→ After the selected disc has been played, the programme mode will resume.

## Clearing the programme

- Stop playback, then press ■ to clear the programme.

OR

Press the **OPEN•CLOSE ▲** button of the programmed disc tray.

→ **PROG** disappears and "PROGRAM CLEARED" is displayed.

Note:

- The programme will be erased if the system is disconnected from the power supply.

## IMPORTANT!

Make sure the FM and MW antennas are connected.

## Tuning to radio stations

- 1 Press **TUNER** to enter tuner mode.  
To select another waveband (FM or MW), press TUNER again.
  - 2 Press and hold ◀◀ or ▶▶ until the frequency indication starts to change, then release.  
→ The system automatically tunes to the next strong signal radio reception.  
→ ∞ lights up for FM stereo reception.
- For tuning to a weak signal station,**
- Press ◀◀ or ▶▶ briefly and repeatedly until an optimal reception is found.

## Presetting radio stations

You can store up to 40 preset radio stations in the memory, starting from FM and followed by MW bands.

Notes:

- The system will exit presetting mode if no button is pressed within 20 seconds.
- If no stereo frequency is detected during Plug and Play, "CHECK ANTENNA" is displayed.

## Using the Plug and Play (page 3 - P3)

Plug and Play allows you to store all available radio stations automatically.

- 1 **Connect the system to the power supply,** "AUTO INSTALL -- PRESS PLAY" is displayed.  
OR  
**In Eco Power standby/standby mode,** press and hold ▶▶ on the main unit until "AUTO INSTALL -- PRESS PLAY" is displayed.
- 2 Press ▶▶ on the main unit to start installation.  
→ "INSTALL TUNER" is displayed.  
→ All previously stored radio stations will be replaced.  
→ Once completed, the last tuned radio station will be played.

## Automatic presetting

You can start the automatic presetting from a selected preset number.

- 1 In tuner mode, press ◀ or ▶ to select a preset number.
- 2 Press and hold **PROGRAM (PROG)** until "AUTO" is displayed.  
→ If a radio station has been stored in one of the presets, it will not be stored again under another preset number.  
→ If no preset number is selected, automatic preset will begin from preset (1) and all your former presets will be overridden.

## Manual presetting

You can choose to store only the favourite radio stations.

- 1 Tune to your desired radio station (refer to "Tuning to radio stations").
- 2 Press **PROGRAM (PROG)**.  
→ The preset number starts flashing. If you want to store the radio station in another preset number; press ◀ or ▶.
- 3 Press **PROGRAM (PROG)** again to store.
- Repeat **steps 1–3** to store other radio stations.

## Selecting a preset radio station

- In tuner mode, press ◀ or ▶.  
→ The preset number, radio frequency, and waveband are displayed.

## Deleting a preset radio station

- Press and hold ■ until "PRESET DELETED" is displayed.  
→ The current preset radio station will be deleted.  
→ All other preset radio stations with higher numbers are decreased by one.

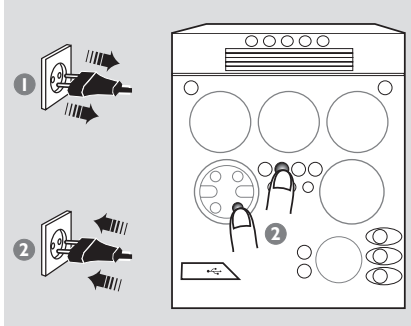
# Tuner Operations

## Changing tuning grid *(not available for all versions)*

In North and South America, the frequency step between adjacent channels in the MW band is 10 kHz (9 kHz in some areas). The preset frequency step in the factory is 9 kHz.

### IMPORTANT!

**Changing the tuning grid will erase all previously stored preset radio stations.**



- 1 Disconnect the system from the AC power supply (pull out the AC power cord).
- 2 While holding down **TUNER** and **▶▶** on the main unit, reconnect the system to the AC power supply.  
→ The display will show "GRID 9" or "GRID 10".

#### Notes:

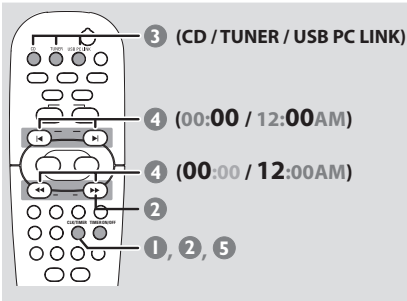
- GRID 9 and GRID 10 indicate that the tuning grid is in step of 9 kHz and 10 kHz respectively.
- The FM tuning grid also will be changed from 50 kHz to 100 kHz or vice versa.


## Timer setting

The system can switch on to CD, TUNER or USB PC LINK mode automatically at a preset time, serving as an alarm to wake you up.

### IMPORTANT!

- Before setting the timer, ensure that the clock is set correctly.
- The volume of the timer will increase gradually to the last tuned volume level. If the last tuned volume level is too low, the set will then increase to a predetermined minimum audible level.



- 1 Press and hold **CLK/TIMER** (or **CLOCK•TIMER** on main unit) until "SELECT CLOCK OR TIMER" is displayed.
- 2 Press **▶** to change the display to "TIMER" and press **CLK/TIMER** again to confirm.
- 3 Press **CD** or **TUNER** or **USB PC LINK** to select the wake-up source.  
 CD → "CD XX:XX"  
 TUNER → "TU XX:XX"  
 USB PC LINK → "USB XX:XX"
- 4 Press **◀** or **▶** (for hours) and **◀** or **▶** (for minutes) repeatedly to set the wake up time.
- 5 Press **CLK/TIMER** to store the setting.  
 → The timer will always be switched on after it has been set.  
 →  icon remains on the display. It indicates the timer is activated.

- At the preset time, the selected sound source will be played for 30 minutes before it switches to Eco Power standby mode (if no button is being pressed within the time frame).

- **CD** – playing the first track of the last selected disc or programmed track (if programme mode is active). If the last selected disc tray is empty, it will switch to the next available disc. If all the disc trays are not available, it will switch to Tuner mode.
- **TUNER** – playing the last tuned radio station.
- **USB PC LINK** – playing the last selected playlist. If the connection fails, it will switch to Tuner mode. Refer to "USB PC Link" for proper connection and setup before use.

### Activating/Deactivating the timer

- Press **TIMER ON/OFF** on the remote to turn off the timer or turn on to the last setting again.  
 → If activated, the timer information will display for a few seconds, then the system resumes to the last active source or stays in standby mode.  
 → If deactivated, "OFF" is displayed.

Note:

- The system will exit timer setting mode if no button is pressed within 90 seconds.


# Timer Operations

## Sleep timer setting

The sleep timer enables the system to switch to Eco Power standby mode automatically at a preset time.

- 1 Press **SLEEP** repeatedly until it reaches the desired preset turn-off time.
  - The selections are as follows (time in minutes):  
15 → 30 → 45 → 60 → 90 → 120 → OFF → 15 ...
  - **SLEEP** is shown, except for "OFF" mode.
  - To view or change the setting, repeat the above.
- 2 Before the system switches to Eco Power standby mode, a countdown of 10 seconds is displayed.  
"SLEEP 10" → "SLEEP 9"... → "SLEEP 1" → "SLEEP"

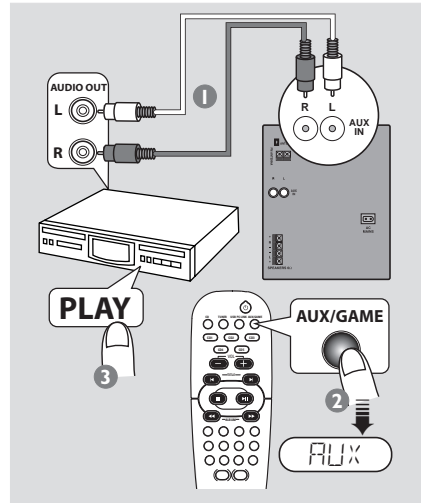
### To cancel the sleep timer function

- Press **SLEEP** repeatedly until "OFF" is displayed, or press the **STANDBY ON**  button.

# Other Connection

## Listening to an external source

You can listen to the sound of the connected external device through your system's speakers.



- 1 Use the red/white audio cables to connect the system's **AUX IN (R/L)** terminals to the **AUDIO OUT** terminals on the other audio/visual device (such as a TV, VCR, Laser Disc player, DVD player or CD recorder)
  - If the connecting device has only a single audio out terminal, connect it to the **AUX IN** left terminal. Alternatively, you can use a "single to double" cinch cable, but the output sounds still remain mono.
- 2 Press **AUX/GAME** until "AUX" is displayed.
- 3 Press **PLAY** on the connected device to start playback.

### Notes:

- All the sound control features (DSC, VAC for example) are available for selection.
- Always refer to the owner's manual of the other equipment for complete connection and use details.



## AMPLIFIER

|                       |   |
|-----------------------|---|
| Output power          | 5500 W PMPO<br>2 x 165 W RMS <sup>(1)</sup> |
| Signal-to-noise ratio | ≥ 75 dBA (IEC)                              |
| Frequency response    | 50 – 18000 Hz, –3 dB                        |
| Input sensitivity     |   |
| AUX In                | 640 mV                                      |
| Gameport              | 310 mV                                      |
| Output                |   |
| Speakers              | ≥ 6 Ω                                       |
| Headphones            | 32 Ω – 1000 Ω                               |

(1) (6 Ω, 1 kHz, 10% THD)

## DISC PLAYER

|                       |                      |
|-----------------------|----------------------|
| Programmable tracks   | 40                   |
| Frequency response    | 20 – 20000 Hz, –3 dB |
| Signal-to-noise ratio | ≥ 76 dBA             |
| Channel separation    | ≥ 60 dB (1 kHz)      |

## USB

|                           |                      |
|---------------------------|----------------------|
| Frequency response        | 20 – 20000 Hz, –3 dB |
| Signal-to-noise ratio     | ≥ 75 dBA             |
| Channel separation        | ≥ 40 dB (1 kHz)      |
| Total harmonic distortion | < 0.3% (1 kHz)       |

## TUNER

|                        |                |
|------------------------|----------------|
| FM wave range          | 87.5 – 108 MHz |
| MW wave range (9 kHz)  | 531 – 1602 kHz |
| MW wave range (10 kHz) | 530 – 1700 kHz |
| Number of presets      | 40             |
| Antenna                |                |
| FM                     | 75 Ω wire      |
| AM                     | Loop antenna   |

## SPEAKERS

|                        |                          |
|------------------------|--------------------------|
| System                 | 3 way, Bass reflex       |
| Impedance              | 6 Ω                      |
| Woofer                 | 1 x 6.5"                 |
| Tweeter                | 1 x 2" Ferrofluid cooled |
| Dimensions (w x h x d) | 348 x 322 x 245 (mm)     |
| Weight                 | 4.35 kg each             |

## GENERAL

|                           |   |
|---------------------------|---|
| Material/finish           | Polystyrene/Metal                               |
| AC Power                  |   |
| For Version /21-21M       | 110 – 127 / 220 – 240 V;<br>50/60 Hz Switchable |
| For Version /30           | 230 – 240 V; 50 Hz                              |
| Power Consumption         |   |
| Active                    | 175 W   |
| Standby                   | < 25 W  |
| Eco Power Standby         | < 1 W   |
| Dimensions (w x h x d)    | 265 x 322 x 390 (mm)                            |
| Weight (without speakers) | 8.6 kg  |

*Specifications and external appearance are subject to change without notice.*

# Troubleshooting

## WARNING

Under no circumstances should you try to repair the system yourself, as this will invalidate the warranty. Do not open the system as there is a risk of electric shock.

If a fault occurs, first check the points listed below before taking the system for repair. If you are unable to remedy a problem by following these hints, consult your dealer or Philips for help.

| Problem   | Solution   |
|---|--|
| <b>When in USB PC LINK mode, "NO CONNECTION" is displayed.</b>                | <ul style="list-style-type: none"><li>✓ Check the connection between your PC and the system and the initial setup required, see "Connections" and "USB PC Link".</li><li>✓ Make sure the connected PC is turned on.</li></ul>  |
| <b>Radio reception is poor.</b>   | <ul style="list-style-type: none"><li>✓ If the signal is too weak, adjust the antenna or connect an external antenna for better reception.</li><li>✓ Increase the distance between the system and your TV or VCR.</li></ul>  |
| <b>"NO DISC" is displayed or the disc cannot be played.</b>                   | <ul style="list-style-type: none"><li>✓ Insert a disc.</li><li>✓ Load in the disc with label facing right.</li><li>✓ Replace or clean the disc, see "Care and safety information".</li></ul>   |
| <b>"DISC NOT FINALIZED" is displayed.</b>                                     | <ul style="list-style-type: none"><li>✓ Use a finalised CD-R(W) or a correct format disc.</li></ul>  |
| <b>The system does not react when buttons are pressed.</b>                    | <ul style="list-style-type: none"><li>✓ Remove and reconnect the AC power cord and switch on the system again.</li></ul>   |
| <b>Sound cannot be heard or is of poor quality.</b>                           | <ul style="list-style-type: none"><li>✓ Adjust the volume.</li><li>✓ Disconnect the headphones.</li><li>✓ Check that the speakers are connected correctly.</li><li>✓ Check that the AC power cord is connected properly.</li><li>✓ When in USB PC LINK mode, check that the PC's volume is not put into mute.</li><li>✓ When playing CD from PC's CD drive, refer to "USB PC Link - Enable digital CD audio output".</li></ul> |
| <b>The remote control does not function properly.</b>                         | <ul style="list-style-type: none"><li>✓ Select the source (CD or TUNER, for example) before pressing the function button (▶  , ◀◀, ▶▶).</li><li>✓ Reduce the distance between the remote control and the system.</li><li>✓ Replace the battery.</li><li>✓ Point the remote control directly toward the IR sensor.</li></ul>  |
| <b>The timer is not working.</b>  | <ul style="list-style-type: none"><li>✓ Set the clock correctly.</li><li>✓ Press TIMER ON/OFF to switch on the timer.</li></ul>  |
| <b>The system displays features automatically and buttons start flashing.</b> | <ul style="list-style-type: none"><li>✓ Press and hold DEMO STOP on the main unit to switch off the demonstration mode.</li></ul>  |

Refer to the FAQ (Frequently Asked Questions) on the supplied CD-ROM or visit our website "[www.audio.philips.com](http://www.audio.philips.com)" for latest update on FAQ.

## Free Manuals Download Website

<http://myh66.com>

<http://usermanuals.us>

<http://www.somanuals.com>

<http://www.4manuals.cc>

<http://www.manual-lib.com>

<http://www.404manual.com>

<http://www.luxmanual.com>

<http://aubethermostatmanual.com>

Golf course search by state

<http://golfingnear.com>

Email search by domain

<http://emailbydomain.com>

Auto manuals search

<http://auto.somanuals.com>

TV manuals search

<http://tv.somanuals.com>