



## Hookup Pages



*Let's make things better.*

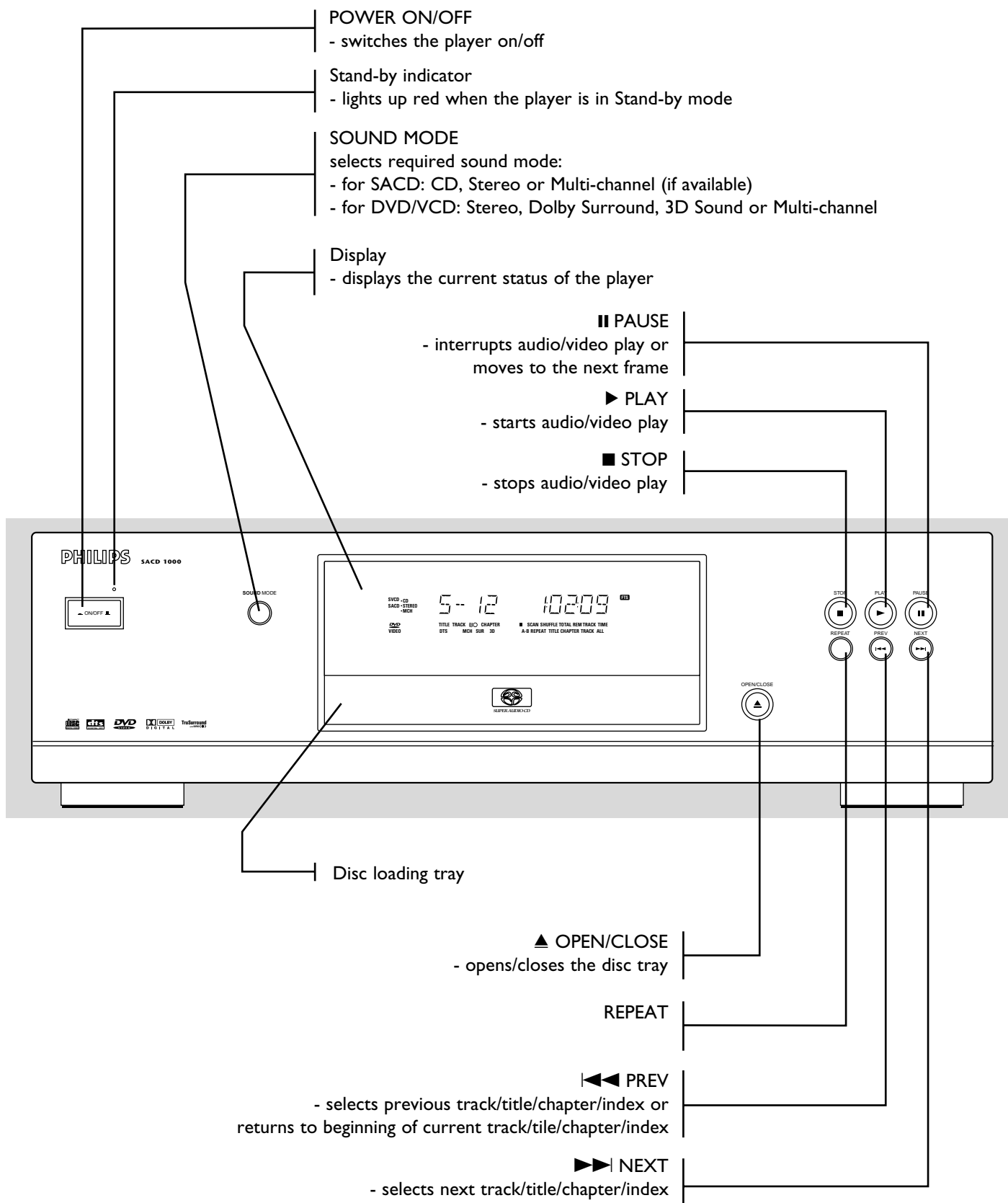


**PHILIPS**

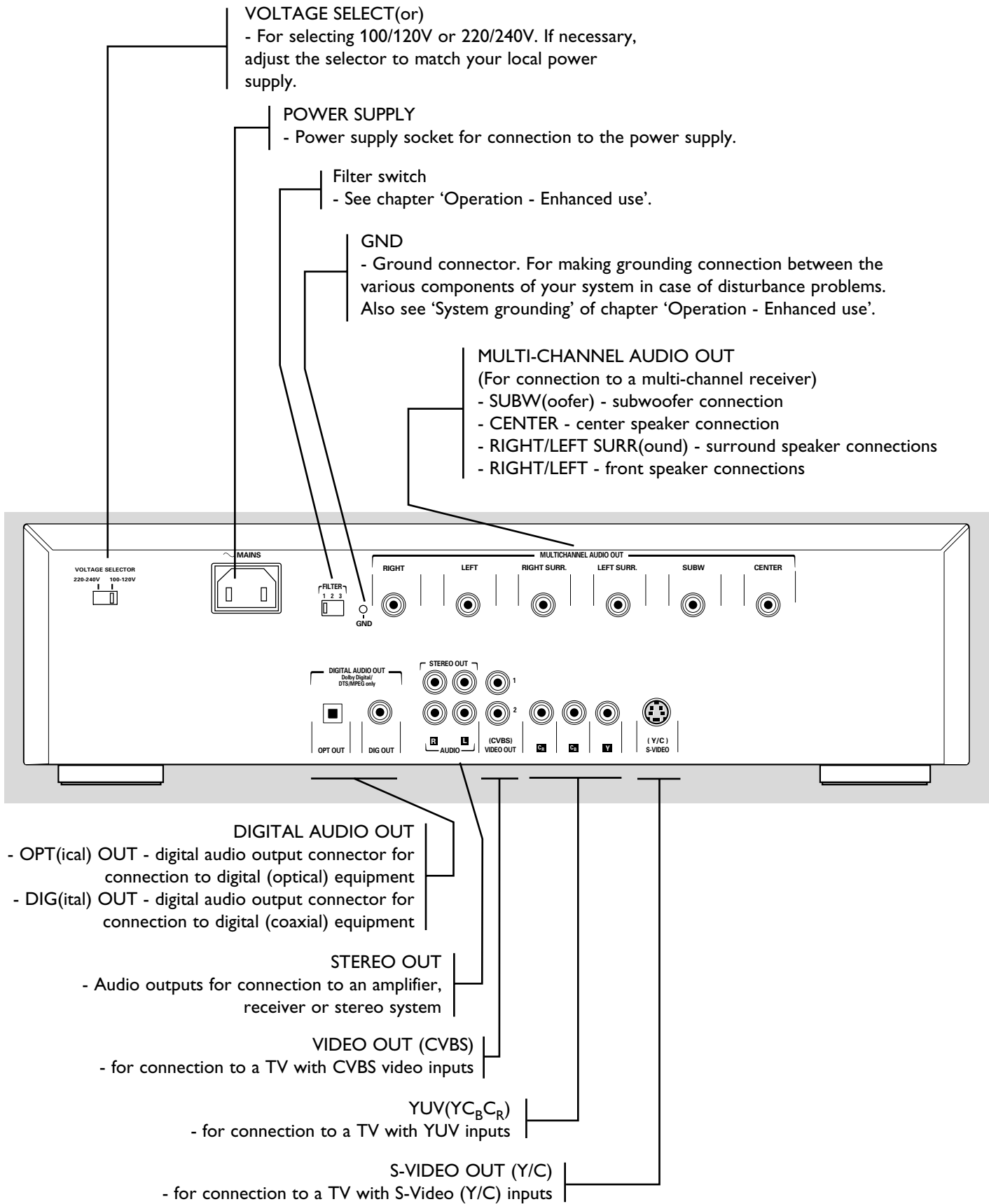
# Functional overview

English

## Front of player



## Rear of player



**Caution: Do not touch the inner pins of the rear panel connectors. Electrostatic discharge may cause permanent damage to the unit.**

# Preparation

## General notes

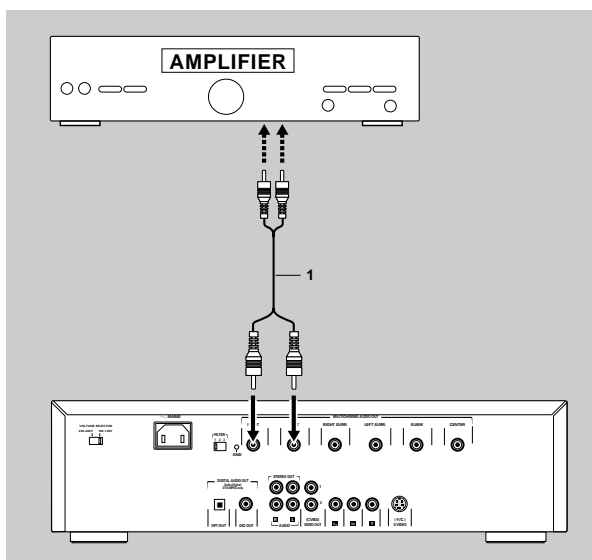
- Depending on your amplifier/receiver/Stereo System, there are various ways to connect the player. These are explained in the section below.
- For some connections, settings for digital and/or analogue output are required. These settings have to be made in the 'Personal Preferences' menu which is only accessible via your TV screen. In these cases you will need to connect the player to the TV as well.
- Please refer to your amplifier/receiver/Stereo System, TV and any other User Manual(s) as necessary to make the optimal connections.

**Caution: Do not connect the player's audio output to the phono input of your audio system.**

## Connecting to audio equipment - analogue

### Connecting to an amplifier/receiver equipped with two channel analogue stereo

- Connect the audio Left and Right outputs for Front speaker connection (1) to the corresponding sockets on your amplifier, receiver or stereo system using the audio cable supplied.

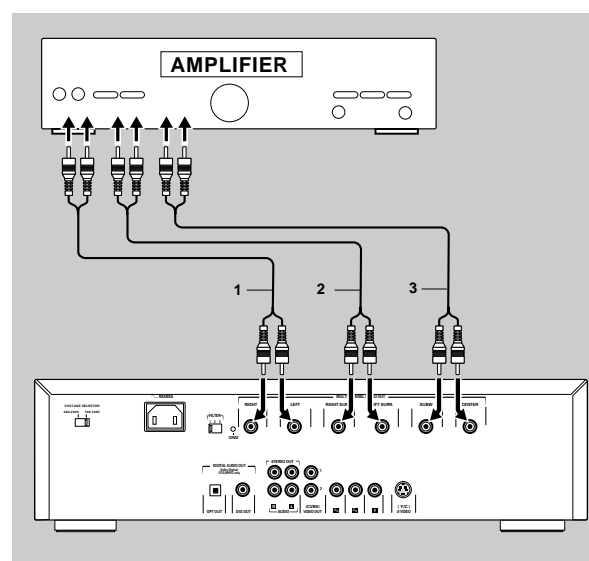


### Connecting to a Multi-channel Audio/(Video) receiver with 6 connectors

This SACD player contains a multi-channel decoder. This enables playback of SACDs recorded in Multi-channel. You only need to select Multi-channel using the Sound Mode key.

- 1 Connect the audio Left and Right outputs for Front speaker connection (1) to the corresponding input sockets on your receiver using the audio cable supplied.
- 2 Connect the audio Left and Right outputs for Surround speaker connection (2) to the corresponding inputs on your receiver using an optional audio cable.
- 3 Connect the audio outputs for Center speaker and Subwoofer connection (3) to the corresponding inputs on your receiver using an optional audio cable.

*Note: If the subwoofer is equipped with its own amplifier, the Subwoofer connection should be connected directly to the subwoofer.*



## Connecting to an amplifier/receiver equipped with Dolby Pro Logic

For an amplifier/receiver with Dolby Surround, you can connect your SACD player in the same way as described for Dolby Pro Logic.

### Dolby Pro Logic sound

- 1 Connect the audio Left and Right outputs for Front speaker connection (1) to the corresponding inputs on the Dolby Pro Logic Audio/Video amplifier/receiver using the audio cable supplied.
- 2 Set Analogue Output to Dolby Surround in the 'Personal Preferences' menu.

### If your amplifier/receiver is equipped with a Dolby Digital decoder

- Connect the player as described in the section 'Connecting to an Audio/(Video) receiver with multi-channel decoder'.

### If you connect the player to a TV equipped with a Dolby Pro Logic decoder

- Connect the player to the TV as described in the section 'Connecting to a TV'.

## Connecting to audio equipment - digital

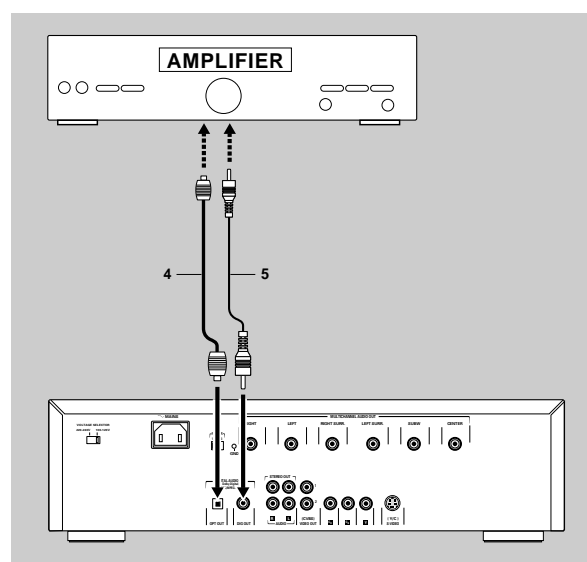
The digital output of the SACD1000 does not provide PCM (Pulse Code Modulation) signals. If your amplifier/receiver can only decode PCM and not multi-channel signals such as Dolby Digital, do not connect your SACD player using the digital input. This could damage your amplifier and/or speakers.

## Connecting to an Audio/(Video) receiver with multi-channel decoder (Dolby Digital, MPEG 2 and DTS)

### Digital Multi-channel sound (not for SACD)

For this you need a multi-channel A/V receiver that supports one or more of the DVD audio formats supported by your SACD player (MPEG 2, Dolby Digital and DTS). Check the receiver manual and the logos on the front of the receiver.

- 1 Connect the player's digital audio output (optical 4 or coaxial 5) to the corresponding input on the receiver using the digital audio cable (coaxial) is supplied. Optical is optional.



### Notes:

- If the audio format of the digital output does not match the capabilities of your receiver, the receiver will produce a strong, distorted sound. The audio format of the DVD disc in play is displayed in the Status Window when changing the audio format.
- 6 Channel Digital Surround Sound via digital connection can only be obtained if your receiver is equipped with a Digital Multi-channel decoder. If your receiver does not contain a decoder, you can make the analogue connections as described in the section 'Connecting to a Multi-channel Audio/(Video) receiver with 6 connectors' to obtain 6 Channel Digital Surround Sound.
- SACD Multi-channel sound cannot be obtained via digital connection.

## Connecting to a TV

### Notes

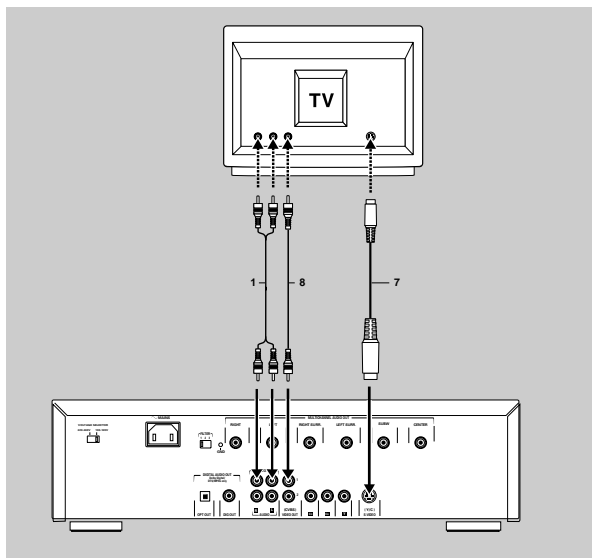
- Depending on your TV, there are various ways to connect the player. These are shown in the illustration below.
- Please refer to your TV, VCR, and any other User Manual(s) as necessary to make the optimal connections.
- Do not connect your SACD-player via your VCR because the video quality could be distorted by the copy protection system.

### S-Video (Y/C) connection

- 1 Connect the S-VIDEO OUT (Y/C) socket (7) to the corresponding socket on the TV using an optional S-Video cable.
- If you wish to receive the sound via your TV, connect the STEREO OUT Left and Right output sockets (1) to the corresponding sockets on the TV using the audio cable supplied.

### Video CVBS connection

- 1 Connect the VIDEO OUT (CVBS) socket (8) to the corresponding socket on the TV using the video cable supplied.
- 2 If you wish to receive the sound via your TV, connect the STEREO OUT Left and Right output sockets (1) to the corresponding sockets on the TV using the audio cable supplied.



## 6 Channel settings - DVD only

### Front speaker

- L (Large) : When the front speakers can reproduce low frequency signals below 120Hz
- S (Small) : When the front speakers cannot reproduce low frequency signals below 120Hz

### Center Speaker

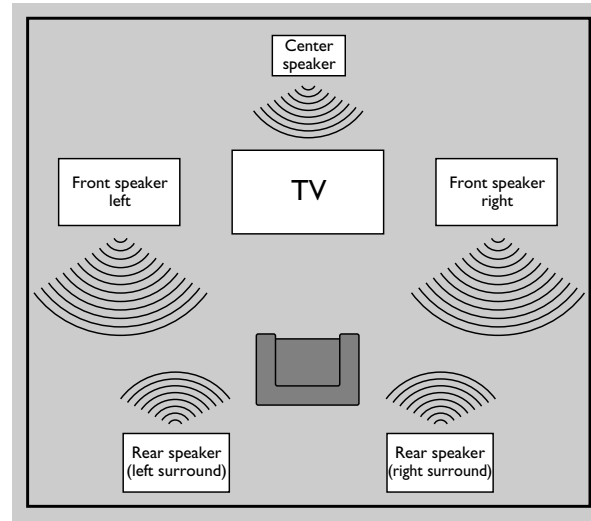
- L (Large) : When the center speaker can reproduce low frequency signals below 120Hz
- S (Small) : When the center speaker cannot reproduce low frequency signals below 120Hz
- Off : When the center speaker is not connected

### Surround speakers

- L (Large) : When the surround speakers can reproduce low frequency signals below 120Hz
- S (Small) : When the surround speakers cannot reproduce low frequency signals below 120Hz
- Off : When the surround speakers are not connected

### Subwoofer

- On : When you connect a subwoofer
- Off : When a subwoofer is not connected



## Delay times - DVD only

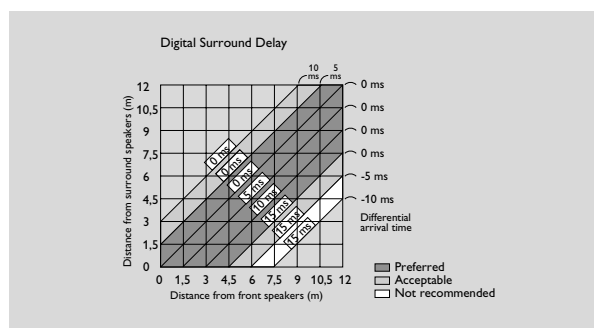
Your SACD player is set to correctly reproduce synchronized Digital Surround Sound in a listening area where the surround speakers are about 150cm nearer to the listening position than the front speakers and the center speaker is in line with the front speakers. To adjust for other listening-area arrangements, adapt delay times according to the following:

### Digital Surround

Measure the distances in centimeters from the front speaker plane and from the surround speaker plane to the listening positioning plane.

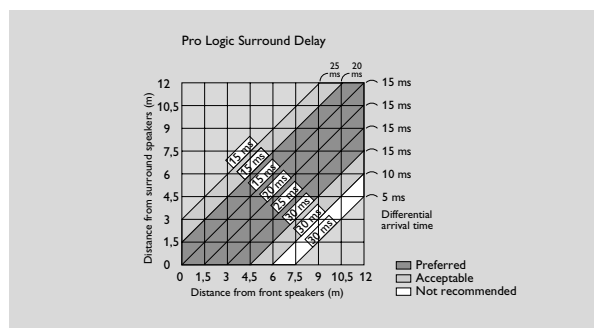
Subtract the surround distance from the front distance and divide by 30. The result is the required Surround Channel delay time in milliseconds.

If the center speaker is on the front speaker plane, no center speaker delay is needed. You can adjust the delay time in the "User Preference Settings". See Personal preferences - Sound - Speaker Settings. If, however, it is nearer to the listening position, measure the distance in centimeters between the front and center speaker planes and divide by 30. The result is the required Center Channel delay time in milliseconds.



### Dolby Pro Logic

If the delay times for Surround Channel and Center Channel are set for Digital Surround mode, the delay times for Dolby Pro Logic mode will automatically be calculated and set.

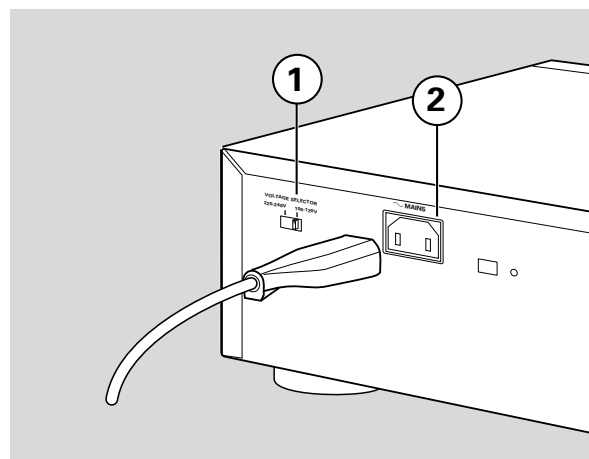


## Connecting the power supply

- 1 Check if the power voltage as shown on the type plate (on the back of the player) corresponds to your local power voltage. If not, adjust the voltage selector (1) to match with your local power supply.
- 2 Plug the female end of the power cable supplied into the Power connector POWER SUPPLY (2) on the rear of the player.
- 3 Plug the male end of the cord into an AC outlet.

*Note: When the player is in the STANDBY or OFF position, it will still consume some power. If you wish to disconnect your player completely from the power supply, pull the plug from the AC Outlet.*

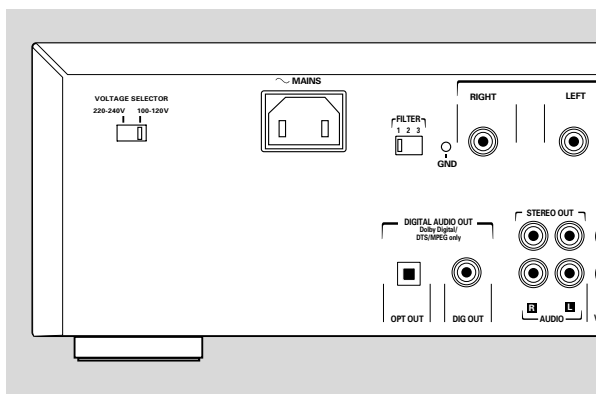
**Caution: Only qualified service personnel should remove the cover or attempt to service this device.**



## Enhanced use

### Filter switch

Not all amplifiers/receivers and speakers can handle the extended frequency response of SACD. Your SACD is equipped with a switchable filter on the rear. The factory setting for this filter is 40 KHz, which is safe for all systems. If your system can handle the full frequency range of SACD (check the relevant manuals or, when in doubt, contact your dealer) do the following:



Set the switch to the required output signal.

Position 1 : 40 kHz - output signal on all speakers is set to 40 kHz.

Position 2 : 50 kHz FRONT/50 kHz OTHERS - output signal on front speakers is set to 50 kHz; output signal on all other speakers is set to 40 kHz.

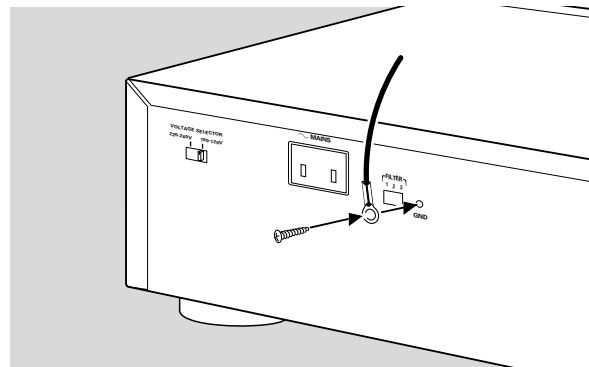
Position 3 : 50 kHz - output signal on all speakers is set to 50 kHz.

**Warning:** If you are not sure that your system is able to handle audio input signals up to 50 KHz, do not change the output signal. You may damage your speakers or amplifier/receiver.

## System grounding

When your system consists of a lot of components, occasional disturbance problems (like howling noises) may occur. These problems can be solved by grounding the system.

- 1 Unscrew the ground connector GND halfway, connect an earth wire to the connector and tighten the connector again.



- 2 Connect the earth wire to the ground connector of the next component in the system.
- 3 If ground connectors are available on the other components of your system, ground the other components in the same way.



## Free Manuals Download Website

<http://myh66.com>

<http://usermanuals.us>

<http://www.somanuals.com>

<http://www.4manuals.cc>

<http://www.manual-lib.com>

<http://www.404manual.com>

<http://www.luxmanual.com>

<http://aubethermostatmanual.com>

Golf course search by state

<http://golfingnear.com>

Email search by domain

<http://emailbydomain.com>

Auto manuals search

<http://auto.somanuals.com>

TV manuals search

<http://tv.somanuals.com>